



The DORSET *Connection*

A Publication Of The Continental Dorset Club

Volume 10 Issue 3

Fall 2008

DORSET BREEDERS - THE NATIONAL SHEEP IMPROVEMENT PROGRAM: IS IT FOR YOU?

Most livestock producers have become familiar with the term EPD over the past few decades. We see the information as common place when selecting a bull or buying semen, however many may not know this technology is available to sheep producers.

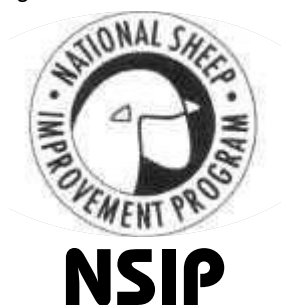
Producers now have another tool in their toolbox to assist in selecting sheep – the National Sheep Improvement Program. As chairman of the NSIP board, Jim Morgan notes the program “increases the accuracy of identifying superior performance traits.” The idea is catching on so fast as the program numbers have skyrocketed with the program seeing a 44% increase in the number of flocks involved since 2003. With this type of growth, one might ask “What is this program and how can I get involved?”

According to the home page of the association’s website (www.nsip.org), the program “specializes in computer genetic selection of sheep based on performance.” The program uses EPDs, commonly known as Expected Progeny Differences, to measure the genetic value of performance traits. The NSIP is able to provide a diverse set of data by collecting information from purebred producers and compiling the data into usable and comparable figures that can be measured across a breed. Thus, the NSIP enables producers to easily identify the best “genetic stock for their breeding programs” by using a state of the art identification system.

The National Sheep Improvement Program is made-up of four primary areas: an executive board that directs the process, Virginia Tech University who currently oversees the compilation of data, an

administrative center located at the American Sheep Industry headquarters in Colorado, and a group of breed representatives to coordinate the collection of information for the various breed associations.

The program works by collecting data from purebred producers enrolled in the program. Traits can be evaluated for two areas, the standard farm flock and range flocks. Farm flocks can receive EPD information for a 60 day weaning weight, a 120-day post weaning weight, a 60-day maternal milk, and a percentage lamb crop. Range flocks data includes a 60-day



pre-weaning weight, a 120-day weaning weight, a yearling weight, fleece staple length, fiber diameter, fleece weight and a percentage lamb crop. A few breeds have additional specific traits measured such as the Katahdin breed, which also obtains data for the percentage of lambs weaned, the pounds of lambs weaned per ewe exposed, and fecal egg counts.

Producers become involved in the program by submitting an enrollment form to the NSIP office. The form simply includes contact information, breed and flock size. Once a producer is enrolled they will be asked to submit their data electronically to their breed coordinator.

The breed coordinator then submits the information to Dr. Dave Nottle at Virginia Tech University. Dr. Nottle and his team run the data through a complex computer program to obtain EPD information. Once the genetic values are calculated, the information is sent back to the breed coordinators, who use the results to publish the breed sire summary. In addition, results are sent back to individual producers. To keep the process simple and efficient, most of the communication is done via computer and the internet.

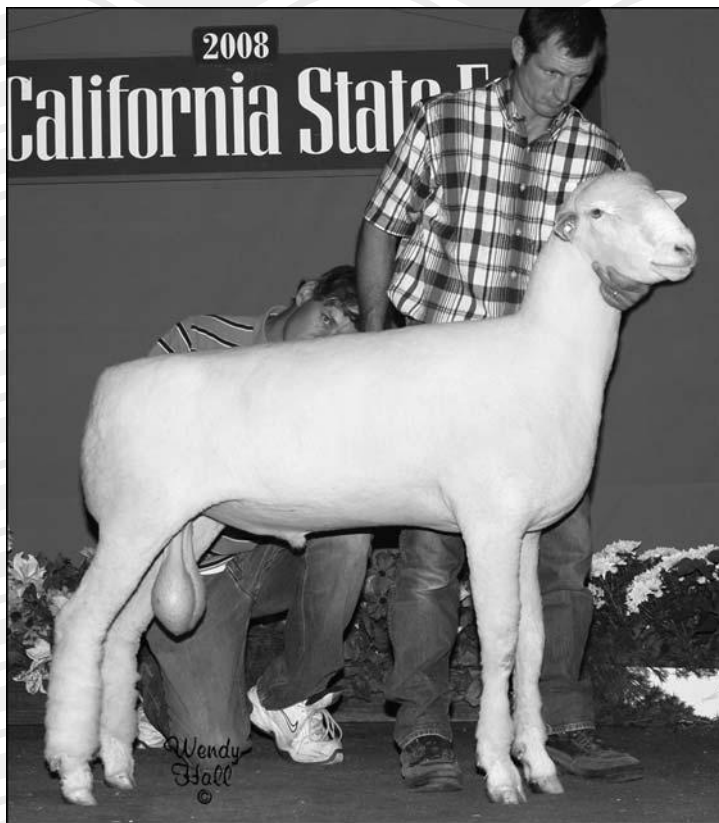
The cost for the process is reasonable in comparison with the valuable data obtained by the producer. Each breed association sets their own fee schedule based on a figure from NSIP. There is also an additional price scale for smaller breeds involved in the program. The fees are determined at the time of producer enrollment in the program and the producer is assessed on the number of breeding animals listed.

Great strides have been made over the years to make the program more accessible to all breeds. NSIP chairman Jim Morgan from Arkansas pointed out it “now easier for breeds not involved to get involved in the process.” Numbers appear to be backing this theory as Jim pointed out “from June 2007 to June 2008 there has been a 23.1% increase in the number of flocks using NSIP.”

This trend is to the advantage of producers. As more producers get involved in the process, the data becomes more accurate. Whereas in the beginning producers could receive flock EPD data, known as FEPD, the primary focus of the program today is to present producers

continued on page 5

WE WENT HOLLYWOOD AT THE



Reserve Grand Champion Ram

Bradford 745 E.T. – 1st Early Fall Ram Lamb and Reserve Grand Champion Ram. Sired by Saylor's Twin Oaks S404 "Slick". Purchased jointly with Ken Wagner of Stony Point Ranch.

He's
Louisville
Bound!



2nd Late Fall Ram Lamb

GRF 08-8 – 2nd Late Fall Ram Lamb sired by Haven Point 0406 "RRebound". He's going to Louisville!



She's
Louisville
Bound!

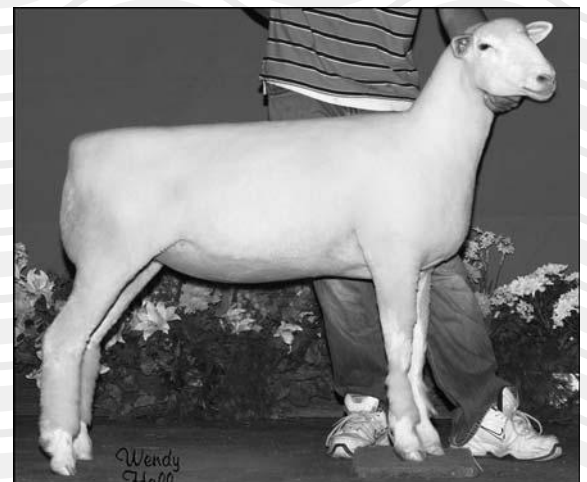
1st Spring Ewe Lamb

GRF 08-24 – 1st Spring Ewe Lamb at California sired by Green River Farms 07-6. She's also going to Louisville.

ALSO THANKS TO... Cardoza's Diamond C Ranch for purchasing half interest in Green River Farms 07-8 who sired the 1st Spring Ewe Lamb at the 2008 California State Fair.

1st Winter Ewe Lamb

Peters 68 – 1st Winter Ewe Lamb. Purchased from Kristen Peters of Texas at Sedalia.



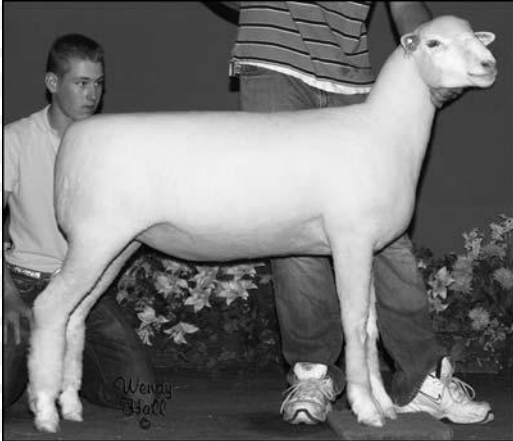
SPECIAL THANKS TO... Dan Spilde, the Eldridge Family and Todd Maddux for your help at the California State Fair, and to Billy Wade and Mona Lisa Pettersson for your help at Reno!!!

AND THANKS TO... Bridgette Eldridge for purchases at Reno and the farm.

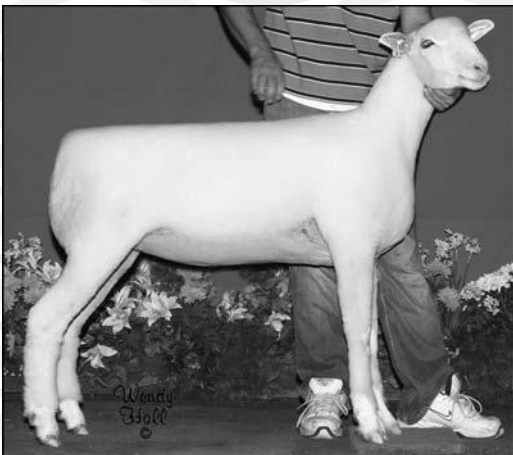
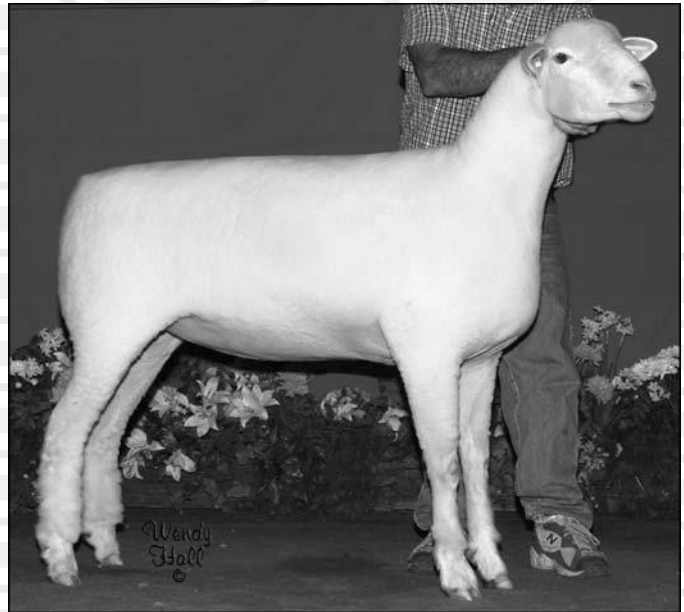
2008 CALIFORNIA STATE FAIR!

Reserve Grand Champion Ewe

GRF 07-47 – 1st Yearling Ewe and Reserve Grand Champion Ewe. She was also 4th Spring Ewe Lamb at the 2007 NAILE and 1st Spring Ewe Lamb at 2007 California State Fair. She's sired by Haven Point 0406 "RRebound" and purchased by Bridgette Eldridge off the farm. Congratulations Bridgette!!



**2nd
Early Fall
Ewe Lamb**
GRF 08-2 – Sired
by Bradford
Farms 8912.



2nd Late Fall Ewe Lamb
GRF 08-7 – Sired by Bradford Farms 8912.



1st Place Flock 2008 California State Fair

2008 California State Fair Highlights:

- | | |
|-------------------------|----------------------|
| 1st Early Fall Ram Lamb | 2nd Winter Ewe Lamb |
| 2nd Late Fall Ram Lamb | 1st Spring Ewe Lamb |
| 1st Winter Ram Lamb | 5th Spring Ewe Lamb |
| 3rd Pair Ram Lambs | 1st Pair Ewe Lambs |
| Reserve Champion Ram | Reserve Champion Ewe |
| 1st Yearling Ewe | 2nd Young Flock |
| 5th Yearling Ewe | 2nd Best Pair |
| 2nd Pair Yearling Ewes | 1st Flock |
| 2nd Early Fall Ewe Lamb | Premier Breeder |
| 2nd Late Fall Ewe Lamb | Premier Exhibitor |
| 1st Winter Ewe Lamb | |

Premier Breeder & Exhibitor at Four Consecutive Shows!

2007 Cow Palace • 2007 California State Fair
2008 Sonoma County Fair • 2008 California State Fair

GREEN RIVER FARMS

Polled Dorsets

Johnnie Johnson

johjohnson@excite.com

25265 Carlsbad Avenue • Davis, CA 95616 • 530/979-0028

TABLE OF CONTENTS

Cover:

Is The National Sheep Improvement Program for You?.....	1,7
Table Contents & Director's Listing.....	4
Dorset Calendar of Events.....	6
Promotional Items.....	6

Feature Articles

2008 National Dorset Sale in Sedalia.....	10
Midwest Sale Breed Standard Inspections Results.....	11
2008 Annual Board & Membership Meeting Minutes.....	12, 14-15

Announcements

2008 NAILE Schedule of Events & Exhibitor Information.....	18
REMINDER: Dorset Excellence Program.....	18
New England & Great Lakes Director Nominating Committees.....	19
Registration Rates Increase January 1, 2009.....	19
Staunton Is Back!.....	19
Dorsets Reign Supreme At The California State Fair.....	42

Dorset Commercial Connection

Decrease Feed Costs Through Increased Pasture Production.....	20
Great American Lamb Company Invites Dorset Breeder Support.....	20-21
2008 Pennsylvania Ram Test Results.....	21

Youth News

Dorset Kids Shine At The All-American Junior Show	24
2008 Dorset Ewe Futurity Update.....	24
Annual National Junior Dorset Association Meeting To Be Held in Louisville.....	24

2008 Junior Summer Show Results

All-American Junior Show.....	26-27
New England Regional Junior Show.....	27-29
Great Lakes Regional Junior Show.....	30-31
Western Regional Junior Show.....	31-32
Great Plains Regional Junior Show.....	32-33

2008 Summer Sales Results

Wisconsin Invitational Sale.....	34
National Cornbelt Sale.....	34
Nugget All-American Sale.....	34-35
Great Lakes Sale.....	35-36
Midwest National Dorset Sale.....	36, 38-41
New England Sale.....	42

2008 Dorset Ewe Lamb Futurity Nominators.....	44
---	----

NEXT NEWSLETTER ISSUE DEADLINE:

DECEMBER 15, 2008 TO BE MAILED FEBRUARY 1ST, 2009

Make sure you advertise in this important post Louisville and pre-Ohio Dorset Sale issue. Send your ad information to Advertising Designer Dale Smith, 17917 Brim Road, Bowling Green, OH 43402
Ph: (419)352-2332 Fax: (419)352-2332 E-mail: royal-s@earthlink.net
Contact the CDC Office for further information.

ADVERTISERS

Green River Farms.....	2-3	K Bar K.....	21
Klampe Polled Dorsets.....	5	Saylor's Twin Oaks.....	22-23
Maple Hollow Farm.....	7	Riverwood Farms.....	25
Advertising Rates.....	8	Reynolds Stock Farm.....	27
Cassell Horned Dorsets.....	9	Stony Point Ranch.....	29
Lauden Acres.....	13	5D Polled Dorsets.....	33
Ewephoric Dorsets.....	14	California Dorset Breeders.....	37
Millennium Farm.....	15	Grimme Horned Dorsets.....	39
Southfield/Peterson.....	16	Royal S Graphics.....	41
Bel-Mar Farm.....	17	Superior Farms.....	43
Two Willow Ranch.....	19		

CONTINENTAL CLUB BOARD OF DIRECTORS 2008-2009

President - Mike Galleher Great Lakes Director

6000 CR 100
Mt. Gilead, OH 43338
Phone: (419)946-4582

Vice President - John Monahan Western Director

4324 Spring Hill Rd
Petaluma, CA 94952
Phone: (707)778-7593

Eastern Director Melanie Barkley

9027 Hyndman Rd.
Manns Choice, PA 15550
Phone: (814)623-5756

Great Plains Director Tom Diel

2223 E 104th St.
Perkins, OK 74059
Phone: (405)880-7485

New England Director Frank Tiffany

117 Tiffany Rd.
Norwich, NY 13815
Phone: (607)336-7622

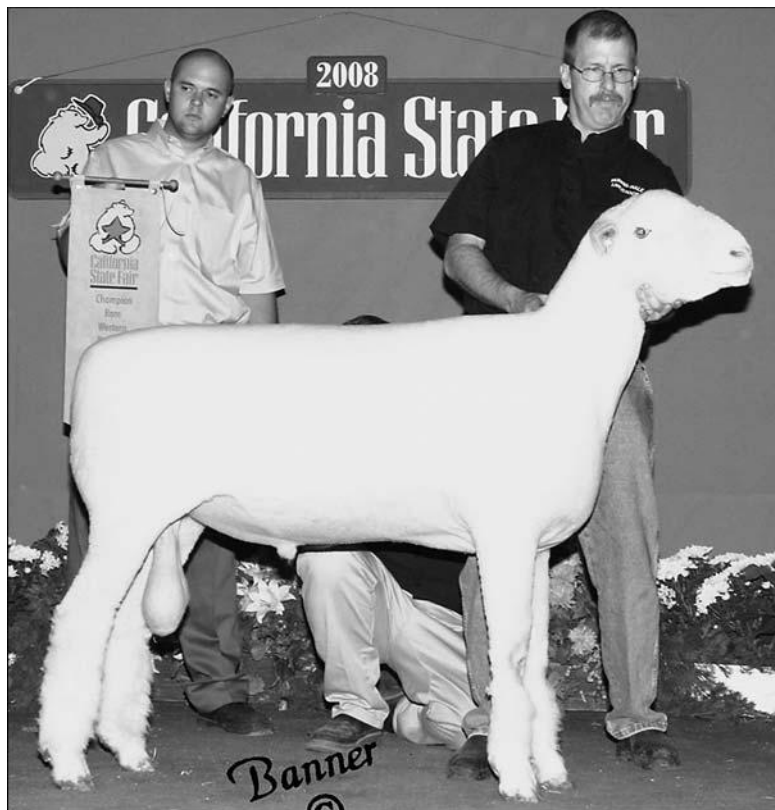
North Central Director Larry Hunter

135 E. Broadway
Roseville, IL 61473
Phone: (309)426-2465

Executive Secretary/Treas. Debra Hopkins

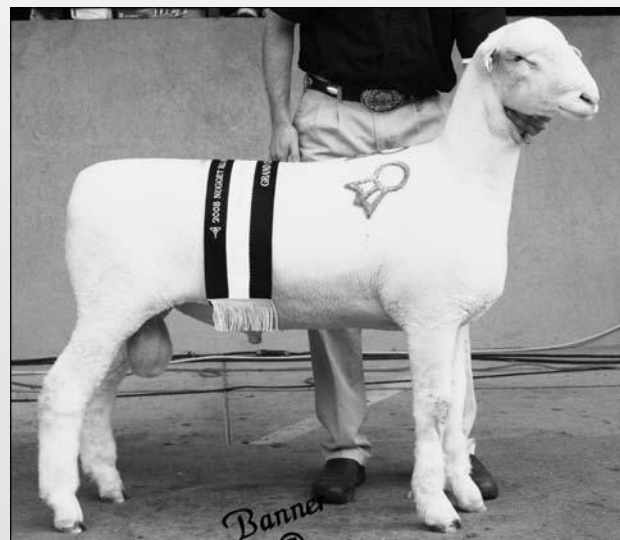
P.O. Box 506
N. Scituate, RI 02857-0506
Phone: (401)647-4676
Fax: (401)647-4679
E-mail: cdcdorset@cox.net
ets.homestead.com

This publication is produced three times annually by the:
Continental Dorset Club, Inc.
North Scituate, RI



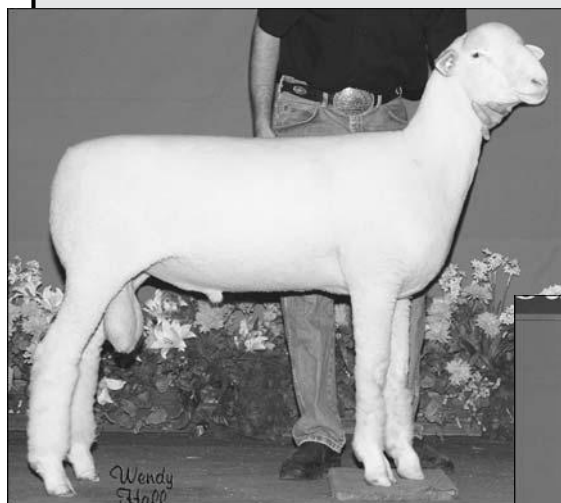
“SONY” REIGNS SUPREME ...in Sacramento!

“Sony” Saylor’s Twin Oaks 635, Supreme Champion Ram at the 2008 California State Fair and Champion Dorset Ram at the Oregon State Fair. He’s sired by “High Definition” and out of a “Change Up” daughter. Thanks to Davis Polled Dorsets for recently purchasing half interest in “Sony”.



Champion Ram – 2008 Nugget All-American

Sired by “Stealth” and out of “Prime Time’s” mother. Special thanks to Rebekah Sapp, Aumsville, OR, on her purchase.



We Also Exhibited
the Champion Ewe
& Reserve Champion
Ewe at the 2008
Nugget All-American

Both sold to Davis
Polled Dorsets.

3rd Spring Ewe Lamb at California

This spring ewe lamb out of our Junior Champion Ram (“Prime Time”) at Louisville last year may be our lead ewe at the National Sale in Reno next year!

RENO BEST CONSIGNMENT!

Outstanding Dorset Consignment
and
Harlan Wagner Memorial Award
at the Nugget All-American in Reno.

See Him In Louisville!

2nd Spring ram lamb 2008 California State Fair. Look for this February born “Sony” son at Louisville in November and at the Ohio Dorset Sale in March.

Thanks To These Repeat Buyers!

- Davis Polled Dorsets, OR
- Rebekah Sapp, OR
- Brittany Nyberg, OR
- Troy White, ID

Congratulations to These Junior Exhibitors with Klampe Genetics:

Rebekah Sapp – Supreme Champion Ram Oregon State Fair FFA Show and Reserve Supreme Ewe, Junior Pl.

Callahan Anderes – 1st Spring Ewe Lamb Oregon State Fair Junior Show and Supreme Champion Ewe Union County Fair.

Katy Byers – 1st Spring Ram lamb California State Fair Junior Show.



Rick, Angie,
Ashley &
Kristina Klampe



KLAMPE
POLLED DORSETS

89 Ankeny Hill Road SE • Jefferson, Oregon 97352
503/587-0650 • rick.klampe@linnbenton.edu • www.klampepolledorsets.com

DORSET CALENDAR

- October 31, 2008: DEADLINE** for sending in Matching NAILE Open Show Premium Funds to CDC Office, P.O. Box 506, N. Scituate, RI 02857
- November 10, 2008: DEADLINE** for sending in Regional Point Record Forms for 2008 Dorset Ewe Futurity Program to CDC Office, P.O. Box 506, N. Scituate, RI 02857
- November 15, 2008:** National Junior Dorset Breeders Association Annual Meeting & Pizza Party, 7:00 PM, N.A.I.L.E. Show Complex, Louisville, KY. Contact CDC Office (401)647-4676
- November 16, 2008:** National Polled Junior Dorset Show and National Horned Dorset Junior Show, N.A.I.L.E., Louisville, KY. Contact: CDC Office (401)647-4676
- November 17, 2008:** National Horned Open Dorset Show and National Polled Open Dorset Show, N.A.I.L.E., Louisville, KY. Contact CDC Office (401)647-4676
- November 29, 2008:** Illini Bred Ewe & Ewe Lamb Sale, Illinois State Fairgrounds, Springfield, IL. Contact: Banner Sale Management (309)785-5058
- December 11, 2008:** CDC Board Tele-Conference Meeting, 8:00 PM EST
- December 15, 2008: ADVERTISING & INFORMATION DEADLINE** for 2009 Winter Issue of "The Dorset Connection". Contact CDC Office (401)647-4676 or Advertising Editor Dale Smith at (419)352-2332
- January 15, 2009: DEADLINE** for notification to CDC Director Nominating Committees for the New England & Great Lakes Regions. Contact CDC Office (401)647-4676
- March 20 & 21, 2009:** Ohio Dorset Sale, Preble County Fairgrounds, Eaton, OH. For entry information contact: Saylor Sale Mgm't (937)464-7214
- May 28-30, 2009:** National Dorset Sale & CDC Annual Meetings held in conjunction with the Nugget All-American Invitational Sale, Sparks, NV. For entry information contact Banner Sale Management (309)4785-5058, www.bannersheepmagazine.com

DORSET PROMOTIONAL ITEMS AVAILABLE

-Dorset Baseball Caps: Cotton twill available with either a embroidered Polled Ram Head (*Chocolate or Sage Green*) or Horned Ram Head (*Maroon or Forest Green*). Logo only so space is available for you to have your own farm name embroidered on it! **Cost (including shipping and handling) is \$15.00.**

-History Book of The Continental Dorset Club & The Dorset Sheep: This book is 186 pages containing over 300 photos of Dorsets and those who have led the breed through this century. Cost is \$15.00 which includes shipping and handling.

-Key Rings: Carabiner Key Ring, assorted colors available: red, green blue, purple. Cost is \$1.00.

-Registration Paper Three Ring Binder: An 11" x 8 1/2" green vinyl covered 1" wide three ring binder with 10 sheet separators to get you started! CDC logo on front cover. Holds up to 100 sheets. Great for storing and traveling of the new CDC larger registration papers. **Cost is only \$10.00 which includes shipping and handling!!**

-Ram Head Decals: Polled or Horned ram head available in two sizes. Large 12" diameter and small 6" diameter. Cost is \$6.00 for the large decal and \$4.00 for the small decal.

-Magnetic Bumper Sticker featuring the CDC Logo and the phrase: "The Breed for all Seasons....The Breed for all Reasons". Cost is \$2.00 each.

**SEND YOUR CHECK OR MONEY ORDER TO:
CDC, P.O. Box 506, N.Scituate, RI 02857**

COVER STORY, continued

continued from page 1

with EPD information that can specifically be evaluated across flocks. This system works well for many of the breeds immersed in the program.

According to Morgan, several breeds have a number of flocks in the program. The Katahdin and Targhee breeds appear to be the most widely represented with approximately 2000 ewes/breed/year participating in the NSIP program. Suffolks and Polypays follow closely behind with 1000 head of sheep participating within their respective breed categories. Other breed active in the program are Columbias, Dorsets, Hampshires, Rambouillets, Coopworth and Romneys. In addition, the program has seen a surge in the number of Doerpers and White Doerpers recently involved in the program. NSIP also runs data for the Boer Goats and some Alpaca breeders, and they are looking at adding Kiko Goats and possibly Shropshires in the future.

Jim Morgan also noted flock improvement and numbers appear to vary depending upon the average flock size of the breed. He pointed out for example, "In 2007, 18 Targhee flocks represented 1900 head of ewes whereas 46 flocks of

Katahdin enrolled 2217 ewes." He also explained the board has seen an "increase in the number of small breed groups over the past year."

Although EPDs are proving to be a valuable commodity for purebred producers, commercial operators have quickly caught on to the process and started utilizing the data to enhance their crossbred flock's performance capabilities. Morgan noted there are "three sales around the country where EPD records are commonly used." The sales include the Miles City Ram Sale in Montana, the Center of the Nation Sale in Iowa and the National Katahdin Sale. Morgan explained that the rams going through the sales with EPD information are consistently outselling the rams without data. This year the Center of the Nation Sale had a record 181 head of sheep consigned.

Jim Morgan explained the primary downside to using EPDs in sheep production is the "species that have seen the best increase in EPDs use artificial insemination on a regular basis." With that said, he was quick to praise the impact of the present use of NSIP data has had on the industry. Producers involved in the program have surely seen an improvement in

overall performance based on the data and in turn been able to utilize the program as another marketing tool.

Morgan wrote in a recent article titled Selecting Superior Meat Sheep in the 21st Century, "A protocol for selection of superior livestock for meat performance needs to balance economically important traits, including reproductive efficiency and maternal behavior as well as rate of growth and muscling." By combining conformation traits with the technology afforded us through the National Sheep Improvement Program, producers will have access to more tools to increase educated decisions about the selection of the future cornerstones to breeding programs. If the NSIP program growth continues on its course, we will soon be utilizing EPD data on a regular basis to improve our flocks."

Written by K. T. Jones (reprinted with permission from Banner Magazine)

For more specific information on the Dorset NSIP program go to:
<http://www.members.aol.com/dornsip/dornsip.htm>



MAPLE HOLLOW FARM

Brian & Melanie Barkley

9027 Hyndman Road • Manns Choice, PA 15550
814.623.5756 • maplehollow@earthlink.net
www.maplehollow.net



Coming This Fall... Lambs From "Down Under"!

If you are looking for heavy muscled, long bodied sheep that thrive on pasture, check out the lambs from our Australian sired rams.

Thanks to All Our 2008 Buyers!

Mike Caskey	Levi Moore	Curt Stanley
Phyllis Davison	Megan Keller	Carissa Wilson
Justin Fruechte	Marvin Koerper	Overtime Farms
North Dakota State University	James VanDyke & Family	

Aussie Sired Spring Lamb

One of three ram Lambs sold to North Dakota State University.



Stop by the farm anytime. We would love to show you our Dorset flock!



LETTER FROM CDC PRESIDENT MELANIE BARKLEY

Greetings!

The summer has flown by so quickly! I'm sure many of you are now anxiously awaiting the arrival of the fall lambs. Hopefully, we will all have many lambs bouncing around our pastures in the next few weeks. As I write this note, we are hoping for some rain here in Pennsylvania to boost fall pasture production. Things are getting a bit "crispy" here while in other parts of the country, rain is certainly not something you are looking forward to seeing more of.

We had an excellent national meeting and sale in Sedalia this summer. Prices held steady throughout the sale and buyers should be quite pleased with the high quality sheep

they purchased. One of the items that the board discussed at their board meeting that week was the possibility of developing a futurity program for wether type sheep. For those of you who are involved in this segment of the industry, you may want to contact your regional director to provide input on this program. With the great interest in the market lamb programs at fairs, this could be an excellent way to encourage more youth to become involved in raising their own market show prospects.

On another note, this edition of the Connection is focusing on production type sheep and includes some great information about the NSIP (National Sheep Improvement

Program). This would be an excellent time for you to think about enrolling your own flock in the program. Performance data combined with visual appraisal gives us an added advantage when selecting sheep to retain in our flock as well as helps us choose that next stud ram. Have a great fall and best of luck with your fall lambing program!

And, I would like to congratulate the new officers who will take over the leadership of the organization this fall. Serving as president will be Mike Galleher and vice president will be Jon Monahan. Best wishes to you both.

Melanie Barkley

The **DORSET** *Connection*

ADVERTISING RATES

Published three times per year by the Continental Dorset Club, Inc.

Ad Deadlines

Spring/Summer Issue: Ad copy and materials due April 1st (May 15th mailing date)

Fall Issue: Ad copy and materials due August 15th (October 1st mailing date)

Winter Issue: Ad copy and materials due December 1st (January 15th mailing date)

Payment

Payment for all advertising due at time of ad placement. Additional costs for extra artwork or special effects will be billed later. Add \$15 for each photo, **No Proof Pictures Accepted – Only Prints or Digital Photos (high resolution)**. No discounts on photos. Print-ready ads submitted on CD (Mac formatted) or sent via e-mail are accepted and will receive a 15% discount from listed base prices.

Contracts

Advertising contracts are also available. Advertisers will receive an additional 10% discount for yearly contracts. Ads must be placed in three consecutive issues and paid in full at the time the first ad is placed. No limitation on ad size.

NOTE: The Continental Dorset Club, Inc. reserves the right to reject any advertising or copy that may be objectionable.

Send all advertising materials to:

DALE SMITH

Advertising Editor/Designer

17917 Brim Road • Bowling Green, Ohio 43402

Phone: 419/352-2332 Fax: 419/352-2332 E-mail: royal-s@earthlink.net

Ad Dimensions & Base Prices

**New Rates
Effective Winter
2009 Issue**

2 Page Ad
16" x 9-7/8"
\$460

1 Page Ad
7-1/2" x 9-7/8"
\$290

1/2 Page Ad
7-1/2" x 4-15/16"
(Horizontal)
or
4-7/8" x 7-1/2"
(Vertical)
\$175

1/4 Page Ad
4-7/8" x 3-3/4"
\$105

Bus. Card Ad
3-1/2" x 2"
\$52 - 1 Time
\$140 - 3 Times

AD PROOFS: Initial and final proofs are guaranteed to advertisers who send in ad copy and materials by the deadlines noted. Advertising copy received after deadlines will be included on a first come, first serve basis, time and space permitting.

WE HAVE A GREAT SELECTION OF HORNED DORSET RAMS AND EWES AVAILABLE... HAVE YOURS DELIVERED TO THE NAILE!

***** PRICED TO SELL! *****

- * 25 Ewe lambs born 12/07-3/08
- * 5 spring exposed fall ewe lambs (born 10/07)
- * 15 spring exposed brood ewes
- * A great selection of ram lambs

We have many more that are not featured in this ad!



Spring Ram Lamb PRC W3113 – He's one of the best we've had in a while. He's got lots of capacity, a great head, great length and plenty of size! The NAILE will be his first show!



Spring Ram Lamb PRC PR 68 – He's a maternal brother to our popular yearling ram who was Champion at the Ohio State Fair! His dam was the 2006 NAILE Champion Ewe. He's a late born lamb, but is really coming!

Thanks!

...To All Our Buyers
This Year. We appreciate
your confidence and
trust in our genetics!



Fall Ram Lamb Cassell W976 – He's a beautiful headed ram with traditional breed type and lots of mass...a sure brood ewe maker!

**We are
really looking
forward to the
NAILE this
year!**

**Stop by
and take a
look at these
rams at the
NAILE!**

CASSELL HORNED DORSETS

Leon, Barbara, Paul, Mary Ann & Diana Cassell

2317 Peppers Ferry Road • Wytheville, VA 24382

Phone: 202/255-1764 (Paul) • Email: pcasse2001@yahoo.com

Website: www.horneddorsets.com

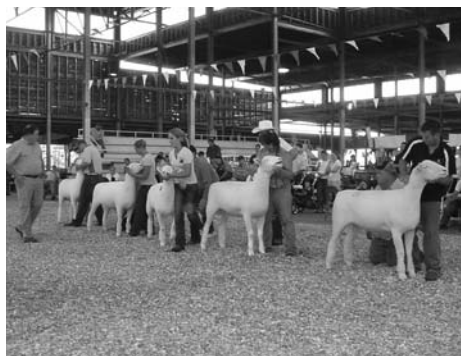
FEATURE ARTICLES

2008 NATIONAL DORSET SALE AT SEDALIA: SUCCESS ON ALL FRONTS !

The 2008 National Dorset Sale for Polled and Horned Dorset Breeding sheep and Dorset Wether Sires and Dams was held at the Midwest Sale in Sedalia, Missouri from June 25-27. Since the Dorset breed was hosting their National Sale all the Dorset activities was condensed into three days for the convenience of our breeders.



On Tuesday, June 24th, the breed type inspection committee went through all the Dorset sheep consigned to the sale. Thank-you to Tom Willwerth and Craig Beckmeier for serving as inspectors. Data was once again gathered. The data summary is published after this article. The breed type inspection process will commence for the time being with data collection, as the CDC board now feels a data base has been established for evaluating where the Dorset breed currently stands according to its breed standards.



Show day for all the Dorset sheep was Wednesday, June 25th and an excellent set of Dorsets were paraded through the ring. Thanks to Kyle Thayer and Brad Gillmore for judging the sheep. A complete sale report is in the sale report section of this newsletter. Congratulations to all the winners, especially to Twin Oaks Dorsets, Belle Center, OH who not only took home the Best Polled Dorset Sale

consignment award but also won the overall Midwest Sale Best Consignment Award. This is a very prestigious honor among all the breeds consigned.



The Cassell Family of Wytheville, VA had the Best Horned Dorset Sale consignment. The Horned Dorset consignors should be very proud of their overall consignment as the 24 head sold averaged \$736.46. Which is a new breed record for them! Congratulations!

Thank-you also goes to Ewe-phoric Dorsets for sponsoring the wonderful blankets for the Best Headed Dorset Awards. The winners were: Cedar Lane Dorsets, WI.; Ram & Ewe Farm, OH; and the Cassell Family, Wytheville, VA.



On Friday morning, the CDC Annual membership meeting was held at the Youth Building on the Missouri State Fairgrounds. It was very well attended by the Dorset breeders. Thanks goes to the Missouri Dorset Breeders for providing a great pancake breakfast. Thanks especially to the LaFavor and Bush families for their support and great cooking!

The CDC Junior Dorset Association also held a gift basket auction at the National Sale to help fund their scholarship fund. Thank-you to all those that donated baskets and to the successful bidders. Thanks to your support there was a total of \$916.00 raised for the scholarship fund. There was also 1% of the gross Dorset sales at the National Sale collected to go into the fund. Since, all the Dorset sheep sold so well a total of \$2020.50 was added to the fund. Thank-you to all the

Dorset consignors and buyers for their support!

Friday was sale day and it went very well for the Dorset breed. All three divisions of Dorset sheep averaged over \$700 and a total of 277 head of Dorsets exchanged hands. Yes, there were a few walkouts, especially on rams, but it was the end of June and the ram market was soft in spots. The CDC would like to thank Peters Polled Dorsets for donating a ewe lamb that was auctioned off to help support the Great Plains Regional Junior Dorset Show at the Tulsa State Fair.



The ewe lamb futurity program was once again supported well by the consignors as 81 polled and horned ewe lambs were nominated. Thanks to your support the futurity program will once again support itself well and then some for the 2008 junior participants.

All in all the 2008 National Dorset Sale was very successful on all fronts! The Dorset breed should be very proud of the quality of sheep shown and sold, and of the supportive fund raising activities for our juniors! This breed supports its juniors like no other and it should be very proud of that fact as a total of \$16,781.29 will be spent on junior activities for the 2007-2008 fiscal year. Half of which is raised from outside of the general fund of the CDC!

The Dorset breed did itself proud and we are looking forward to having just as successful event next year at the 2009 National Dorset Sale which will be held in conjunction with the Nugget All-American Sale in Sparks, Nevada from May 28-30, 2009. Make plans now to join us!



MIDWEST NATIONAL SALE BREED STANDARD INSPECTION RESULTS

The Continental Dorset Club has been gathering data at the past three national event breed type inspections processes. Following is an compilation of the most recent inspection that was conducted at the Midwest Stud Ram Sale. For the first time the data includes a Dorset Wether Sire & Dam category. Both the Horned Dorset and the Dorset Wether Sires and Dams had no sheep over the height limitations as stated in the Dorset Breed Standard of Excellence. The Polled Dorset breeding sheep however, did have several individuals over the height limits as listed. It should be noted that the length versus height in the Polled Dorset breeding sheep was slightly shorter than they are tall which shows improvement over the first time data was gathered at the 2007 Ohio Dorset Sale where they averaged almost 2" shorter than tall.

Once again the serious defects and highly objectionable traits found were slight. It should be noted that during this inspection a lot more rough/scratchy mouths were found by our inspectors than in previous inspections. None of the mouths were considered to be a disqualification however. Almost 10% of the Dorset sheep inspected were found to have excellent breed character.

The Continental Dorset Club will be continuing the inspection procedure at upcoming National Events, though measuring will be discontinued at the present time as a pretty complete data base has been gathered. Breed inspectors will continue to be looking for serious defects and highly objectionable traits, along with excellent breed type. Maintaining emphasis on identifying these traits for the inspectors will continue to help educate judges to the Dorset Breed Standard of Excellence.

Polled Dorset Breeding Sheep

Measurements: (averages)

-Fall Yearling Rams	38" tall X 37.33" long (3 head)
-Spring Yearling Rams	38.44" tall X 37.75" long(4 head)
-Fall Yearling Ewes	35.11" tall X 34.61" long (7 head)
-Spring Yearling Ewes	35.03" tall X 34.04" long(40 head)
-Slick Shorn Yrl. Ewes	34.11" tall X 33.64" long (7 head)

*100% of the Yearling Rams were over the height limit of 37" as stated in the breed standard. The inspectors added a one inch lee-way to the breed standard limit and 43% were over that limit.

*85% of the Yearling Ewes were over height limit of 34" as stated in the breed standard. The inspectors added a one inch lee-way to the breed standard limit and 35% were over that limit.

Polled Dorset Breeding Sheep

Measurements: (ranges)

-Fall Yearling Rams	Height: 37.5" to 39" Length: 37.75" to 39.5"
-Spring Yearling Rams	Height: 38" to 38.25" Length: 37" to 38.25"
-Fall Yearling Ewes	Height: 34.25" to 36.25" Length: 33.5" to 35.5"
-Spring Yearling Ewes	Height: 34" to 36.25" Length: 31.5" to 37.5"
-Slick Shorn Yrl. Ewes	Height: 32.75" to 35" Length: 32.5" to 35.5"

Horned Dorset Measurements: (averages)

-Fall Yearling Rams	35.25" tall X 35.25" long (2 head)
-Spring Yearling Rams	35.75" tall X 35.75" long (1 head)
-Yearling Ewes	31" tall X 32.06" long (4 head)

*None of the sheep measured were over height according to the breed standard

Horned Dorset Measurements: (ranges)

-Fall Yearling Rams	Height: 35" to 35.5" Length: 34.5" to 36"
-Spring Yearling Rams	Height: 35.75" to 35.75" Length: 35.75" to 35.75"
-Yearling Ewes	Height: 30" to 32" Length: 31.25" to 33"

Polled Dorset Wether Sires & Dams

Measurements: (averages)

-Yearling Rams	32.13" tall X 33.38" long (2 head)
-Yearling Ewes	31.92" tall X 32.42" long (3 head)
*None of the sheep measured were over height according to the breed standard	

Polled Dorset Wether Sires & Dams

Measurements: (ranges)

-Yearling Rams	Height: 31.25" to 33" Length: 32.25" to 34.5"
-Yearling Ewes	Height: 31.75" to 32" Length: 32" to 33"

Polled Dorset Serious Defects & Highly Objectionable Traits:

Highly Objectionable Traits:

Scratchy Mouth	10 head (3.6%)
Mouth/Nose Color	6 head (2.2%)
Hoof Color	2 head (.72%)

Serious Defects:

Absence of hair coat	1 head (.36%)
----------------------	---------------

Horned Dorset Serious Defects & Highly Objectionable Traits:

Highly Objectionable Traits:

Scratchy Mouth	1 head (4.2%)
----------------	---------------

FEATURE ARTICLES, cont.

2008 ANNUAL BOARD OF DIRECTORS MEETING MINUTES: JUNE 26, 2008

The meeting was called to order at 8:10 AM by President Melanie Barkley. Directors Larry Hunter, Tom Diel, Mike Galleher and John Monahan were in attendance. CDC Exec. Sec./Treas. Deb Hopkins was also present.

-Secretary Minutes: Deb Hopkins presented in writing the minutes from the 2007 CDC Fall-Teleconference Meeting held December 6, 2007. Mike Galleher moved to accept the minutes as written. Tom Diel seconded. Motion passed.

-Treasurer's Report: Deb Hopkins presented the financial report for the fiscal 2007-2008 year to date as of June 18, 2008. Total income is \$72,452.72, total expenses is \$82,951.84 for a current net cash loss of \$10,189.16. Account balances - Checking Account: \$16,577.94; Savings Account: \$5,963.64; CDC I: \$22,529.00; Downsbrough Savings: \$759.03; Junior Association \$8,903.82 for total cash assets of \$54,733.43. Larry Hunter moved to accept the treasurer's report. Mike Galleher seconded. Motion passed. Tom Diel moved to allow the sec./treas. to investigate other banks and investment options. John Monahan seconded. Motion carries. Deb Hopkins will report back to the board this fall on her findings via email for their direction. Deb Hopkins also presented a proposed budget for 2008-2009 for the board to review as it goes through the meeting. Deb discussed how difficult it was to balance budget with lowering registration numbers. Discussion ensued about raising revenue to cover expenses. John Monahan moved to increase registrations across the board by \$1.00. Tom Diel seconded. Motion carried. Deb Hopkins also presented the accountants annual report for the 2006-2007 fiscal year for the director's records.

-CDC Stats: Deb Hopkins presented the 2007-2008 statistics to date. As of June 22, 2008, 5682 head have been registered and 2639 head have been transferred. The registrations are up 48 head from the same period last year and the transfers are down 57 head from last year.

-Correspondence: Melanie Barkley reported that she had an email from a breeder concerned about the ever growing height of Dorset sheep. John Monahan presented an email from a breeder suggesting Gene Sanford to be a judge nominee at next year's national sale. Both items will be discussed further under the business portion of the meeting.

COMMITTEE REPORTS:

-Dorset Futurity: Melanie Barkley reported that to date 191 polled ewe lambs and 22 horned ewe lambs have been nominated. Of those 42 polled ewe lambs have been tattooed and 14 horned ewe lambs. There were four group nominators: Riverwood Farms, Superior Farms, Spilde Brothers and Cassell Horned Dorsets. Larry Hunter moved that the CDC investigate doing a Dorset Wether Dam division in the futurity program to get more youth involved. John Monahan seconded. Motion carried. Tom Diel and John Monahan will work on this proposal.

-Breed Standard: John Monahan reported that the inspections went well yesterday and data was gathered for the third time. Discussion ensued on the direction the inspections should go. Tom Diel moved to continue with the inspections except to dispense with the measuring for the time

CDC FALL BOARD TELECONFERENCE MEETING

December 11, 2008

If you have any item you would like to be addressed by the CDC Board please contact a director before this date. Your input is very important to the functionality of this breed association!

being since a data base has been formed. Mike Galleher seconded. Motion carried three to one. Deb Hopkins will do up a data report and print in the next newsletter like it has been done in the past to let the breeders know of the findings. It was also suggested to continue slick shorn classes in nationally sponsored events. Four new names were presented to be put on the certified judges list: Mike Crowder, Craig Beckmeier, Heath Geiman and Michael Stitzlein. Tom Diel moved to accept the four names presented to the certified judges list. Larry Hunter seconded. Motion carried.

-Production Dorset Committee: Melanie Barkley reported that the committee had a teleconference call January 24, 2008 and came up with some ideas to promote the production aspect of the Dorset sheep. It was suggested the CDC continue to encourage breeders to utilize the NSIP program and ram test programs. The fall

issue of "The Dorset Connection" will be production oriented featuring production type articles and information. At the present time the committee felt it was not ready to sponsor a separate production Dorset type sale but to continue to promote the production type Dorset in CDC avenues like the newsletter and website.

-Dorset Breeder Excellence Program: Mike Galleher reported that the program had been finalized and promoted in the newsletter and on the website. Application forms are available directly off the CDC website. The application deadline will be at the end of this year so we will have to wait and see how well the response will be. It will be promoted once again in the fall newsletter.

-Newsletter and Website: Deb gave the financial report on the Winter 2008 Issue, which generated a net income of \$142.69. The Spring/Summer issue also recorded a slight income of \$160.46. To ensure that the newsletter remain in the black slightly Mike Galleher moved to raise rates on display ads by 5% starting in 2009.

Seconded by Tom Diel. Motion carried. Frank Tiffany had presented a statement to be posted on the terms and conditions of website use. John Monahan moved to accept this statement as presented and to post on the website. Motion was seconded and carried. Frank Tiffany would also like to put direct links to National Sale Catalogs and the Ohio Dorset Sale catalog each year. The online registration has been going well as over 400 forms have been submitted to date.

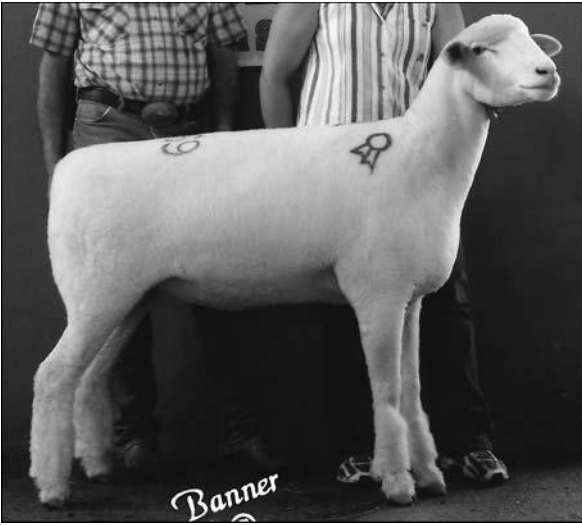
-All-American Junior Show: Deb Hopkins reported that the 2008 All-American Junior Show will be July 4-6, 2008 at the Missouri State Fairgrounds in Sedalia, MO. The Dorset exhibitors and their families will once again have a lunch on Saturday sponsored by the Junior Dorset Association. Heath Geiman will be judging the Polled & Horned Dorsets. Deb would also like to thank Pine Ridge Dorsets and the Cassell Family for donating ewe lambs this year for the show. There was a class sponsorship list taken around at Ohio and it was filled in very nicely by the breeders present. The 2009 show will be taking place in Ohio and Deb Hopkins has volunteered to spear head the All-American Junior Show committee by helping out with pre-show organization.

-National Junior Association: Deb Hopkins reported that the Junior Association is conducting a basket fund raising event at the sale this year. Thank you goes to all the donators of the baskets. The CDC would like to offer a blog

continued on page 14

LAUDEN ACRES

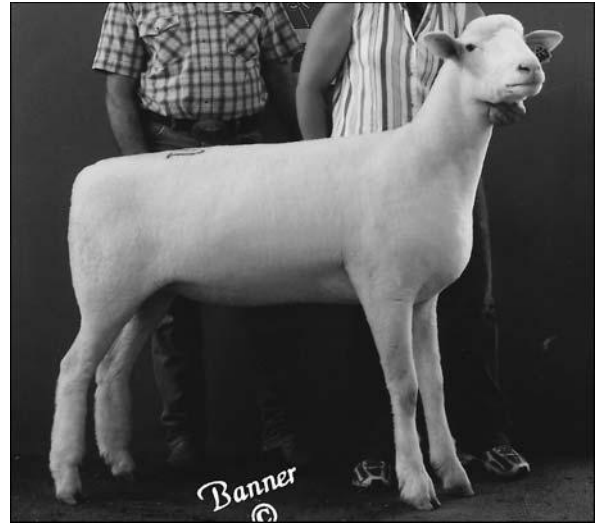
COMMITTED TO EXCELLENCE



Reserve Champion Ewe
2008 National Dorset Sale
Thanks to Dan Troutman, PA

SPECIAL THANKS TO

Kevin & Sarah
Kuykendall, John
(Speedy) Fought
and crew for their
outstanding job
fitting & showing
our sheep.



High Selling Spring Yearling Ewe
2008 National Dorset Sale
Thanks to Treston Eads, IL

A SINCERE THANK YOU TO ALL OF OUR 2008 BUYERS!

News Flash!!!

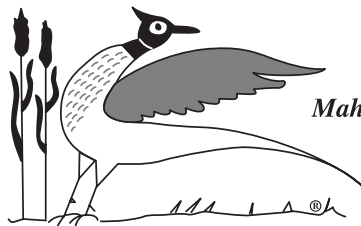
BRADFORD FLOCK GOES TO PENNSYLVANIA...

Thanks to Jeremy and Justin Bradford for the opportunity
to purchase their flock of outstanding brood ewes.
Combining our stud battery with the Bradford ewes and
our own solid base of females has us looking forward to
an exciting lamb crop next season!

Stop By And Visit Us – Sheep For Sale At All Times!

LAUDEN ACRES

Flock Consultant
Timothy M. Hall
HC 68 Box 80 A
Dalmatia, PA 17017-9633
570/556-6381 (Cell)



Division of
Mahantongo Game Farms
Established 1935

Flock Consultant
Dick Kuzemchak
289 South Main Street
Pleasant Gap, PA 16823
814/359-3048 (Home)

Lynn A. Laudenslager • 570/758-6284 (Office) • 570/847-9817 (Cell)

FEATURE ARTICLES, cont.

site on the CDC website for the juniors and also offer teleconferencing services to the junior directors so they can have more meetings. The junior association is planning on having an informal meeting at the All-American and their Annual Meeting in Louisville in November.

-OLD BUSINESS:

-Ideal Statue Development: It was decided to continue is pursuing the development of Ideal Dorset statues but would like to have someone local in Iowa to be a consultant. The names of Roger Huntrods and Marion Meno were mentioned. Larry Hunter will contact them to see if they would like to be involved.

-NEW BUSINESS:

-2008 NAILE National Dorset Shows:

Deb Hopkins reported the first three choices for the Open Polled Dorset show have all declined due to different reasons so the board needs to recommend three new judge names to present for judging at this late date. The board recommended: Aaron Crome, Brad Gillmore, and Mark Chapman in that order. (Note: Aaron Crome has accepted the judging assignment.) The open Dorset show will be Monday with the Horned Dorsets showing first followed by the Polled Dorsets. Deb Hopkins will arrange for two inspectors for the event.

-2009 CDC Director Elections: The New England and Eastern will be electing directors next winter. Both current directors, Frank Tiffany and Mike Galleher, are eligible for re-election as they are both on their first terms. Nominating committees will need to be made known to the office for

announcement in the 2008 Fall newsletter.

-2008 Regional Junior Show Sites:

The regional show junior show sites for 2008:

*Great Lakes – Ohio State Fair in August

*New England - Northeast Youth Sheep Show in July

*North Central – Illinois State Fair in Aug.

*West – California State Fair in August

*East – Delaware Junior Livestock

Exposition in October

*Great Plains - Tulsa State Fair in Sept.

-2009 Annual Meeting & National Sale:

The national sale for both polled & horned

will be held in conjunction with the Nugget

All-American Sale in Sparks, NV May 28-

30, 2009. Deb Hopkins and John

Monahan will get in contact with the

California Dorset Breeders to make

arrangements for a national meeting time

and site. Judge suggestions were as fol-

lows: Jeremy Etzler, Gene Sanford, Bobby

McCrumb and Brad Angus. Deb Hopkins

will send these names to sale manage-

ment. Future National Sales were dis-

cussed. 2010 would be Ohio as it is their

50th Anniversary and 2011 is open with

the possibility of Illinois or open invitation

to New England.

-Election of 2008-2009 Officers:

Tom Diel nominated Mike Galleher for

President. John Monahan seconded the

nomination. Larry Hunter moved to have

the secretary cast one ballot for Mike

Galleher. Motion seconded and carried.

Mike Galleher was elected President. Tom

Diel nominated John Monahan for Vice

President. Mike Galleher seconded. Mike

Galleher moved the secretary cast one

ballot for John Monahan. Motion was sec-

onded and carried. John Monahan was elected Vice President.

-Budget: John Monahan moved to accept the 2008-2009 Budget as presented in writing with corrections in secretary's salary, revenue from registrations and Dorset Connection advertising. Mike Galleher seconded. Motion carried.

Tom Diel moved to recess the meeting and reconvene after the annual meeting. Larry Hunter seconded. Motion carried. Meeting recessed at 12:00 noon.

Meeting reconvened at 9:37 AM Friday, June 27, 2008. Mike Galleher suggested that Deb Hopkins visit with the computer programmer at the sale and look into possibility of registry program development. Tom Diel suggested that at National Sales held later in the year that a late spring class is added. It was also suggested that post show futurity nominations become available for a larger fee. All items will be discussed further at the Fall teleconference.

Tom Diel moved in the event that a board member is requested to attend a CDC event, allowance for mileage is given to the board member at current IRS rating. Mike Galleher seconded. Motion carried.

John Monahan moved to adjourn the meeting. Mike Galleher seconded. Motion carried. Meeting was adjourned at 10:05 AM.

Respectively submitted,

Debra Hopkins

CDC Executive Sec./Treas.

2008 CDC ANNUAL MEMBERSHIP MEETING JUNE 27, 2008

The meeting was called to order by President Melanie Barkley at 8:32 AM on Friday June, 27, 2008 following the pancake breakfast served by the Missouri Dorset Breeders Assoc in the Youth Building on the Missouri State Fairgrounds, Sedalia, MO. Melanie Barkley thanked the Missouri Dorset Breeders for their sponsorship of the breakfast and introduced the directors to the group. She then asked for everyone in the room to stand up and introduce themselves to the group.

Executive Sec/Treas. Deb Hopkins read the minutes from the 2007 Annual Membership Meeting that was held at the Ohio Dorset Sale, Eaton, OH, on March 16, 2007. Steve Myers moved to accept the minutes as read. Lee Donald Olson seconded. Motion Carried.

EWEPHORIC!
Sheep Gifts
Horned Dorsets

Hundreds of Gifts • Extraordinary Sheep
800/742-5510 • ewephoric.com

Deb Hopkins presented the financial report for the fiscal 2007-2008 year to date as of June 18, 2008. Total income is \$72,452.72, total expenses is \$82,951.84 for a current net cash loss of \$10,189.16. Account balances - Checking Account: \$16,577.94; Savings Account: \$5,963.64; CDC I: \$22,529.00; Downsbrough Savings: \$759.03; Junior Association \$8,903.82 for total cash assets of \$54,733.43. Eric Bruns moved to accept the treasurer report as presented. Lee Donald Olson seconded. Motion carried.

Deb Hopkins presented the 2007-2008 statistics to date. As of June 22, 2008, 5682 head have been registered and 2639 head have been transferred. The registrations are up 48 head from the same period last year and the transfers are down 57 head from last year.

Deb Hopkins also read the final stats for 2006-2007. There were 7825 head registered (down 486 from last year) and 4073 head transferred (down 40 head from last year). The top fifteen states in registrations were: 1)Pennsylvania-794 head; 2)Illinois-713; 3)Ohio-626; 4)Iowa-532; 5)Indiana-531; 6)Minnesota-468; 7)California-433; 8)Virginia-393; 9)Wisconsin-346; 10)Oklahoma-344; 11)Missouri-293; 12)Nebraska-286; 13)South Dakota-236; 14)Oregon-195 and 15)New York-192. The 2006-2007 top fifteen registrars were: 1)Superior Farms, OK-116 head; 2)U.S. Meat Animal Research Center, NE-99; 3)Paul R. Cassell, VA (Horned)-84; 4)H.F. Sanford & Sons, MN-77; 5)Penn State University, PA-71; 6-Tie)Lauden Acres, PA-69; 6-Tie)Spilde Brothers, WI-69; 6-Tie)Thomas J. Dagel, SD-69; 9)Riverwood Farms, OH-53; 10-Tie)Robert L. VanderSchaaf, IA-52; 10-Tie)Roger Huntrods & Sons, IA-52; 12)Mithoefer Dorsets, IN-51; 13)Jason Shiflett, VA-50; 14)Barbara & Leon Cassell, VA (Horned)-47; 15-Tie)Brent Wastaney Sheep Farm, IA-45; 15-Tie)Mueller Family, NE-45.

COMMITTEE REPORTS:

-Futurity: Mike Galleher reported that to date 191 polled ewe lambs have been nominated with 42 head tattooed and there has been 22 horned ewe lambs nominated with 14 head being tattooed for participation. Mike recognized the group nominators of Spilde brothers, Riverwood Farms, Superior Farms and the Cassell Family. Thanks to the breeder support the futurity will be self-supporting once again.

-Breed Standard Education/Certified Judges List: John Monahan thanked the consignors for their cooperation on Tuesday during the inspections. Data was once again gathered and a summary will be printed in the next newsletter. The measurement of sheep will be dispensed

with at this time as a good data based has been formed. John also announced that Mike Crowder, Craig Beckmeier, Heath Geiman and Mike Stitzlein have been added to the certified judges list, and encouraged members to nominate judges for the list. The list will be updated and posted on the CDC website.

-Production Dorset Committee: Melanie Barkley reported that they had a very constructive teleconference meeting in January. The fall issue of the Dorset Connection will highlight production Dorset topics including the NSIP program. They want to encourage the use of the newsletter and CDC website to advertise their

type of registered Dorsets.

-Dorset Breeder Excellence Program: Mike Galleher encouraged all types of Dorset breeders to participate in this new program. Cash awards along with program recognition with farm profiles in the newsletter and website will be highlighted. The deadline to apply is December 31, 2008.

-National Junior Dorset Association: President Natalie Harmeyer presented a report on the junior association activities to the group. She reported on the upcoming All-American Junior Show, outlined the scholarship program and encouraged all

continued on page 16



Presenting...



"OPENING DAY"

Bauk 6-07 QR
Born: 11-4-07

Sire: "Son of a Gun"

Good Ewe Dorsets 0512
"High Power" Bauk 30-06
x
Good Ewe Dorsets 0234

Dam: Bauk 04-88

Haven Point Dorsets 0302, "Affirm" son
x
J. Poynter 02-9B

This ram goes back to DDF 704 on both the top and bottom side of his pedigree. DDF 704 was the sire of "Shug", 2000 Champion Ram at the Midwest Stud Ram Sale. Also, "Shug" sired our 2002 National Champion Ram we sold at the National Sale in Staunton, Virginia.

We have exposed him to ewes for fall lambs.

Semen Available!

RESERVE GRAND CHAMPION RAM 2008 INDIANA STATE FAIR

HURRY... Only One Left... Australian Shepherd Pup For Sale!

He's a Black-Tri Male ~ Born May 29, 2008 ~ AKC/ASCA registered ~ CH & HOF bloodlines

Chris, Dawn, Kylie, Kaleb & Kassidy Schakel

5715 E 300 S, Oxford, IN 47971 ~ 765-385-0566

www.millenniumfarmsin.com ~ millennium@localline.com

FEATURE ARTICLES, cont.

that are eligible to apply and also to participate in the Dorset ewe lamb futurity program. She also announced the annual meeting of the National Junior Dorset Association will be held once again in Louisville Saturday evening before the National Junior Show and encouraged all to attend. New England Director Rachael Gately and Great Plains Director Monica Ebert were also present and introduced themselves to the group.

-Newsletter/Website: Deb gave the financial report on the Winter 2008 Issue, which generated a net income of \$142.69 and the Spring/Summer 2008 issue also recorded a slight income of \$160.46. Advertising has been good for the last two issues. The board did raise prices by 5% to assure that the newsletter keeps operating slightly in the black to cover costs. Deb also asked for any related news articles to be submitted to the CDC office for publication in the newsletter. Frank Tiffany had developed a website use terms and conditions that was approved by the board and will be posted on the website.

-All-American Junior Show: Larry Hunter reported that the show will be next week back here in Sedalia. He thanked Pine Ridge Dorsets and the Cassell Family for their ewe lamb donations to help support the All-American show and all the class sponsors that signed up at the Ohio Sale.

-OLD BUSINESS: None brought up.

-NEW BUSINESS:

-2008 Regional Junior Shows: John Monahan reported on the upcoming 2008 Regional Junior Show Sites:

*Great Lakes – Ohio State Fair on August 11

*New England - Northeast Youth Sheep Show, West Springfield, MA on July 18-20

*North Central – Illinois State Fair, Springfield, IL on August 17

*West – California State Fair, Sacramento CA on August 15

*East – Delaware Junior Livestock Exposition, Harrington, DE on October 12

*Great Plains - Tulsa State Fair, Tulsa, OK on September 28

John also thanked Peters Polled Dorsets for their donation of a ewe lamb whose sale proceeds will go towards the support of the Great Plains Regional Junior Dorset Show.

-2008 NAILE National Dorset Shows:

Tom Diel reported that the National Dorset Shows will be on Monday, November 17th. Aaron Crome will be judging the Polled Dorsets and Larry Mrozinski will be judging the Horned Dorsets. The Horned Dorsets will be shown first at 8:00 AM followed by the Polled Dorsets. Breed type inspections will once again take place on

Saturday prior to the show though no measurements will be taken.

-National Sale Rotation: Mike Galleher reported that the 2009 National Dorset Sale, for both Polled and Horned Dorsets will be at the Nugget All-American Sale in Sparks, NV on May 28-30, 2009. The 2010 National Sale has been approved for Ohio as it will be their 50th Anniversary.

-Board Meeting Announcements: Melanie Barkley announced that the possibility of a wether dam division for the futurity program is being looked into and due to the fiscal report the cost of registrations will go up by \$1.00 across the board, going into effect for January 1, 2009. For 2008-2009 Mike Galleher has been elected President and John Monahan Vice President.

-Arbitration of Dispute By-Law Clause: Tom Diel presented Article IX Arbitration of Disputes to the group for their approval. Billy Cox moved to accept the by-law as presented. Paul Peters seconded. Motion carried with 25 for and 1 against.

-Award Presentations: Melanie Barkley announced the Champion and

Reserve Champions from the sale on Wednesday. All the awards were presented in the show ring. Melanie also awarded the 2007 Downsborough Sire of the Year keeper plaque to Riverwood Farms on their stud ram "Incision" Riverwood 4259. Eric Bruns accepted the plaque on their behalf.

Paul Peters moved to adjourn the meeting. Mark Bell seconded. Meeting was adjourned at 8:25 AM.

*Respectively submitted,
Debra Hopkins
CDC Executive Sec./Treas.*



At the recent BIG E Horned Dorset Show in West Springfield, MA, "Freddy" and his mom were stars as they were the main attraction in the barn. This Early Fall Ewe Lamb from the Tom Walsh flock in North Berwick, ME came to the show with her newborn baby ram lamb. Here they are in the show ring where she won her class.

Southfield Corporation & Orchard Valley Farm

Two Flocks
One Ideal



A Special
Thank You
to Our 2008
Buyers

Aiden Davin, Hardwick, MA
Brenda Smith, Hinsdale, NH
Edward Carter, Ashfield, MA
Steve & Sue Mastine, Quebec
Kathy MacLean, Ashfield, MA
Brie Wickland, Huntington, MA

University of Connecticut, Storrs, CT

Come and Have a Look!

Sheep like this are Available at the Farm

Shepherds: Hoop, Becky and Karin Peterson, 41 Bell Rd., Leyden, MA 01337
413-624-5562 ovfarm@mtdata.net

Winners At The OH & KY State Fairs!



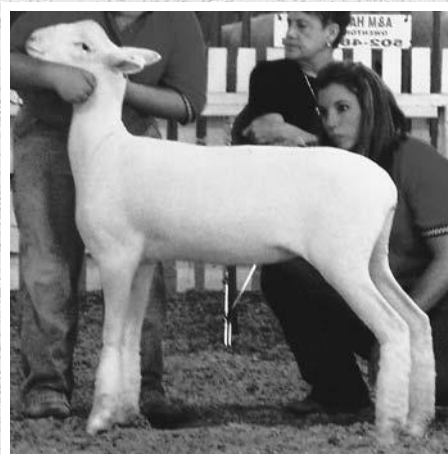
"ROAD RUNNER" 0429F-RR
1st Place Fall Ram Lamb and Reserve Grand Champion Ram at the 2008 Ohio State Fair Open & Junior Shows; 1st and Reserve Senior Champion Ram at Kentucky. He's a son of Saylor's Twin Oaks "S & P", the twin brother to "Dow Jones" and his dam is a daughter of "Back Flash", Haven Point's Grand Champion Ram at the 2004 NAILE.



BMF 1305 (above right)
2nd Place Fall Ram Lamb at the Ohio State Fair Junior Show and 3rd Place Intermediate Ram Lamb at the Ohio and Kentucky State Fair Open Shows. His sire is "Rapid Response" and his dam is BMF 715, our 2003 Ohio State Fair 1st Place Spring Ewe Lamb, who was the mother of our 2006 NAILE 2nd Place Slick Sheared Fall Ewe Lamb. This RR stud prospect is for sale.



BMF 1380
1st Place Slick Sheared Spring Ram Lamb and Reserve Junior Champion Ram at the Kentucky State Fair. 1st Place Slick Sheared Spring Ram Lamb at the Great Lakes Regional Show and 3rd Place Spring Ram Lamb in the Ohio State Fair Junior Show (shown slick in a fitted class). His sire is "Positive Response", our 2007 Ohio State Fair Junior Show Champion Ram and Reserve Champion Ram at the 2007 NAILE Junior Show, and his dam is BMF 960, a "HotRRod" daughter that was Reserve Grand Champion Ewe at the 2006 NAILE Junior Show. This RR stud prospect is for sale.



BMF 1210 (not pictured)
1st Place Slick Sheared Yearling Ewe at the Ohio State Fair Junior Show and Kentucky State Fair; 3rd Place at the Ohio State Fair Open Show. As a lamb, she was 1st Place Slick Sheared Fall Ewe Lamb at the 2007 NAILE Open and Junior Shows.

Dorsets With Style!

Contact us for pretty patterned Dorsets that compete fitted or slick shorn, with style to burn. Visit our web site at www.bel-marfarm.com or give us a call at 1-937-339-6230 or visit with us when you're at the NAILE. You'll like our results of breeding "Rapid Response" to our "HotRRod" daughters.

BMF 1379
1st Place Slicked Sheared Spring Ewe Lamb at the Kentucky State Fair and 3rd Place at the Ohio State Fair Open Show in a class of all fall lambs except ours. This lamb is the twin to BMF 1380.

2008 Ohio State Fair Open Show Results

1st Fall Ram Lamb, 3rd Late Fall Ram Lamb, 6th Spring Ram Lamb, Reserve Grand Champion Ram, 2nd & 3rd Fitted Yearling Ewes, 3rd Slick Sheared Yearling Ewe, 5th Late Fall Ewe Lamb and 3rd Slick Sheared Ewe Lamb.

2008 Ohio State Fair Junior Show Results

1st & 2nd Place Fall Ram Lambs, 3rd Spring Ram Lamb, Reserve Grand Champion Ram, 1st & 2nd Fitted Yearling Ewes, 1st Slick Sheared Yearling Ewe, 2nd Fall Ewe Lamb, 4th Spring Ewe Lamb and 2nd Flock.

2008 Kentucky State Fair Results

Our nine head competed in eight individual classes, we had seven 1st places, two 3rd places, Reserve Senior Champion Ram, Reserve Junior Champion Ram, Junior Champion Ewe and were Premier Exhibitor.

**Watch For Our Dorsets At
The NAILE In November!**

*Visitors Always
Welcome!*

V.S.F.C.P.

Enrolled 4-26-2000



**BEL-MAR
FARM**

Mark & Debi Bell Family

4809 Casstown-Clark Road • Casstown, OH 45312

Phone: 937/339-6230 • Website: www.bel-marfarm.com • E-mail: belmarfarm@verizon.net

*Thanks To All
Our Buyers And
Your Continued
Support...*

ANNOUNCEMENTS

NAILE SCHEDULE OF EVENTS AND EXHIBITOR INFORMATION

The Dorsets will once again be showcased at the upcoming National Dorset Shows during the North American International Livestock Exposition in Louisville, KY. Following is a schedule of specific Dorset events:

-Lead Classes: Fri., Nov. 14th, 4:00 PM

-Junior Market Lamb Show: Saturday, Nov. 15th, 8:00 AM

-Dorset Breed Inspection: Saturday, Nov. 15th, 9:00 AM until completion, for all Dorsets entered in Jr. and Open Shows

-National Junior Dorset Association Annual Meeting & Pizza Party: Saturday, Nov. 15th, 7:00 PM

-National Junior Dorset Shows: Sunday, Nov. 16th, 8:00 AM

-National Open Dorset Shows: Monday, Nov. 17th, 8:00 AM, Horneds first followed by Polleds. Aaron Crome will be judging the Polleds and Larry Mrozinski will be doing the Horneds.

Breed standard inspection for Open and Junior Show sheep will be on Saturday, Nov 15th starting at 9:00 AM. Part of the breed type inspection will be for disqualifications as listed in the revised breed standard. Any sheep found exhibiting a disqualification will not be allowed to participate in the show. The inspectors will also be looking for serious defects and highly objectionable traits, as these too will be noted in the inspection sheets along with excellent Dorset Breed character. A letter will be sent to exhibitors from the CDC office explaining specific inspection procedures.

Please make sure you review the special rules in the Dorset section of the premium book for both the open and junior shows as they will be adhered to. **For open show exhibitors:** In addition to sending in your entries and entry fees to the NAILE when entering the show, please don't forget to send in the matching \$10.00 per individual entry in the Open Polled and Horned Dorset shows directly to the CDC Office. This enables the CDC to provide matching funds and to guarantee at least \$10.00 per individual entry in premiums. **These matching funds need to be sent to the CDC office ASAP if you haven't done so yet.** Please note that junior show sheep do not have to send in matching funds unless they are staying on to be shown in the open shows.

REMINDER

~Dorset Excellence Program~

Program is open to ALL breeders of REGISTERED Dorset Sheep. All types of registered sheep i.e. wether type, commercial, traditional or show breeding stock Dorset sheep are eligible. The program will include both Dorset Horns and Polled Dorsets with each competing separately. There may be upwards to 3 overall breeder winners each for both Polled and Horned Dorsets during a program cycle.

The Dorset Excellence Program will be conducted annually from January 1st through December 31st. Each entry submission will be judged strictly on an anonymous basis. At no time will judges know which breeder corresponds with submission materials.

The judging criterion for the program is based upon a guidelines system at the discretion of the judging committee. Each submission will be judged against the Dorset Breed Standard. Entries will not be judged against each other. Winner(s) will be announced the year following at the Ohio Dorset Sale.

ENTRY INFORMATION:

Breeders will be asked to fill out a questionnaire, provide several photos of their flock and furnish a short statement about their flock's purposes and goals.

-Submission Requirements: (NO SHOW PICTURES PLEASE)

1. Provide a photo of your brood ewe flock or "keeper" females
2. Supply 2 pictures ~ Head & Profile of your ideal ewe lamb
3. Supply 2 pictures ~ Head & Profile of your ideal brood ewe
4. Supply 2 pictures ~ Head & Profile of your ideal ram
5. Furnish 1 photo ~ Rear picture of your ideal ram or ewe

****Pictures provided must be at least 4" x 4" or up to 8 x 10 inches in size. Either black & white or color photos are acceptable. High clarity/pixel size is best. Photos cannot be returned.** **NOTE:** Pictures MUST show your sheep in natural fleece or slick shorn if you prefer.

No washed, fitted or show pictures accepted.

6. Fill out the Questionnaire and your Flock Purposes & Goals Statement by requesting an entry be mailed to you by the Continental Dorset Club or enter online. Online entry requirements will be placed at the bottom of this information. You should be able to submit all requirements for this program via email. In case you have difficulties doing so, please request the entry form be mailed to you and submit all pictures and questionnaire in hard copy via the US mail.

EACH PROGRAM WINNER WILL ENJOY THE FOLLOWING:

****A Breeder Profile in an issue of the "Dorset Connection" which will include photos of your farm/ranch/flock and a full story on your operation.**

****Donated Cash Award of \$200 and merchandise prizes**

****Press Release Publicity in other sheep related publications**

ENTRY DEADLINE: DECEMBER 31, 2008

Application available at:

www.dorsets.homestead.com

or by contacting the CDC Office at (401)647-4676 or email: cdcdorset@cox.net

NEW ENGLAND & GREAT LAKES DIRECTOR NOMINATING COMMITTEES

The New England and Great Lakes Regions will be electing directors next year. Following are the nominating committees for these elections:

***New England Region Director**

Nominating Committee:

-Chairman: Thomas J. Walsh, 52 Lebanon Rd., North Berwick, ME 03906

Ph:(207)676-4405

-Bruce McCord, 786 Spring Lake Rd., Milan, NY 12571 Ph:(845)756-2680

-Mike Wright, 127 London Rd., Westmoreland, NH 03467, Ph:(603)357-5608

***Great Lakes Region Director**

Nominating Committee:

-Chairman: Rick Grimme, 4482 N 200 W, Sharpsville, IN 46068 Ph:(765)963-2536

-Tim Nichols, 1152 Perryville Rd., Harrodsburg, KY 40330, Ph:(859)612-7526

-Kim Root, 3647 Havensport Rd., Carroll, OH 43112, Ph:(740)756-4125

If you are interested in running for director and reside in one of these regions please contact a member of the appropriate nominating committee by January 15, 2009. These committees need to have their slate of nominees with resumes into the CDC Office by February 1, 2009. The CDC adult membership in these districts will be voting in February 2009 for their directors. Current directors from these districts, Frank Tiffany and Mike Galleher, are eligible to run for another term.

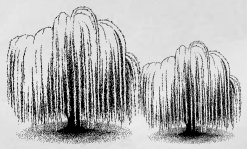
REGISTRATION RATES TO INCREASE AS JANUARY 1, 2009

The CDC Board of Directors moved at the last board meeting to increase registration rates by \$1.00 across the board effective January 1, 2009. Due to the decreasing registration numbers the board had to take action at this time to keep the CDC operating budget in balance. The association is not looking to make a large amount of money but wants to continue to break even in operations without causing any cut backs to existing programs.


The new registration rates will be as follows:

*Member Registration under 1 year of age \$6.00

TWO WILLOW RANCH



Your Home Slick Shorn Dorsets



UC Davis 7040


**2007 Reno All-American
Champion Dorset Wether Sire**

Huntrod 5145 (Martin 0200) x Dogwood Pink 33

John & Cindy Monahan
4324 Spring Hill Road
Petaluma, CA 94952
707/778-7593

Brianna & Erin Monahan
707/480-2151
707/490-9101

Email: John@twowillow.com
Website: www.TwoWillowRanch.com



*Member Registration over 1 year of age \$7.00

*Non-Member Registration under 1 year of age \$8.00

*Non-Member Registration over 1 year of age \$9.00

Transfer fees will remain the same which is \$5.00 for a transfer under 60 days and \$10.00 for one over 60 days from the date of sale. The Annual Service fee will also remain at \$10.00 per year for members and non-members of the CDC, excluding youth members.

STAUNTON IS BACK!

The former Eastern Stud Ram Sale is back as the new Virginia Ram & Ewe Sale. It will be held June 12 & 13, 2009 at the Augusta Expoland in Staunton, VA. For further information contact: Jim Wolford, 1005 Grayson Rd., Wytheville, VA 24382. Cell:(276)920-5017, Home:(276)228-5017.

DORSET COMMERCIAL CONNECTION

Decrease Feed Costs Through Increased Pasture Production

By Melanie Barkley
PSU Extension Educator

As our production costs continue to climb, sheep producers are looking at ways to become more efficient in feeding their sheep. While that statement would be considered a “no-brainer,” a look at the basics of pasture production should help us achieve that goal.

As an Extension Educator, I spend a lot of time recommending soil testing. It still amazes me that folks will practice any kind of fertility program without first checking their soil to find out what nutrients it is lacking. At the top of the list for soil fertility issues is the soil pH. As the pH of the soil moves further away from the neutral zone of 7.0, some nutrients become unavailable to the pasture plants. Thus, if the plants can't use the nutrients we add to the soil, the plants won't grow as well as they could. Nutrients such as manganese and aluminum become more soluble in the soil when soil pH approaches 5.0 and can be present in high enough amounts to be toxic to alfalfa and clovers. This obviously translates into less pasture production to feed the sheep.

The challenge to maintaining pasture fertility comes when we look at how to meet the nutrient needs of our plants, but still keep some money in our pocket. For nutrients, I look to ways to “grow my own.” One of the rules of thumb for pastures has been to keep about 30% of your pasture as a legume. This will provide the needed nitrogen for your grasses and still maintain your pasture at about that percentage of legumes. But, the soil pH must be near that 7.0 level in order for the nodule-forming bacteria on legumes to produce the needed nitrogen. You may still need to add phosphorus and potassium and possibly some other nutrients to maintain

the best balance for plant growth.

Next on my list would be management related issues. Start with looking at the type of forages that are growing in your pastures and manage them to prevent stressing or weakening the plants. Some forages can be grazed low to the ground without any adverse affects. Other plants need to be grazed at higher levels. For most cool season forages, move sheep out of a field before the height reaches 3 inches. This manages the plants and serves as a control measure for internal parasites. Some of the warm season grasses will need rotated out when they are 6 inches tall.

As we move through the fall grazing season, don't forget about overwintering heights. Warm season grasses such as switchgrass and big bluestem should be at least 12 inches tall for the winter. Fescue and orchardgrass should go into the winter at five to six inches in height, clover pastures at five inches, and bluegrass pastures at three inches. I would also use caution with red clover because of the estrogenic effects it can have on sheep.

Another consideration for fall is to look the variety of species growing in the pastures. Are there weed problems that should be addressed? Chemical controls can work very well in the fall of the year because products are moved rapidly from the leaf area to the roots because plants are starting to store energy reserves for the coming winter.

Are there other forages that you would like to introduce into your pastures? Fall can be a great time to introduce a new species by no-tilling into the existing sod. You may want to overgraze a bit before seeding the fields to decrease competition with the existing plants in the field. The following year the pasture should be grazed to proper heights so that the new seedlings can compete better with the established forages. Be sure to avoid over grazing so the new seedlings aren't stressed or weakened.

New forage species can also be frost seeded into pastures during

late winter. This works well for legume species such as white clover. This is a process where the seeds are broadcast early in the morning after a hard frost. The sun warms the soil during the day and the frozen “honeycomb” that developed the night before slowly closes over the seeds. Grass seeds are normally too light and fluffy for frost seeding. The soil doesn't cover them over as well as the legume seeds and thus they don't germinate as well.

A leisurely walk through your pastures can be time well spent when you evaluate the forage production and consider how those forages can save you money feeding your sheep. For information on forage species appropriate for your pastures or for information on soil testing procedures, contact your local Cooperative Extension office.

GREAT AMERICAN LAMB COMPANY INVITES SUPPORT FROM DORSET BREEDERS AS IT EXPANDS MARKET FOR PREMIUM AMERICAN LAMB

Great American Lamb Company, which distributes premium all natural family farm produced (Dorset) lamb nationwide, invites support from Dorset breeders for its efforts to promote premium American lamb. Visit their website at GreatAmericanLambCompany.com

Breeders can support GALC in one or more of several ways. First, breeders with websites are encouraged to add a link, on their site, to the GALC website. Second, breeders are encouraged to refer consumers looking for premium American lamb to the GALC website. Third, breeders are encouraged to order premium American lamb from the GALC website for their families, friends and business associates. Finally, breeders are encouraged to contact GALC in the future if they are interested in supplying lambs to GALC (which pays producers a premium price for a premium product).

Great American Lamb Company and its affiliate, long time Polled Dorset breeder Shady Hill Farms, Ltd., have spent many years developing the genetics, the feeding programs, the health programs and protocols, the industry leading lamb quality specifications, cutting plans, value added processing plans and methods, and the distribution system, for premium American lamb. From the start, GALC was committed to developing a product that would be recognized as superior to other product available in the domestic market. GALC also recognized from the start the critical importance of consistency in the product. Today, after years of research and testing, GALC products are widely recognized by chefs and discriminating consumers alike as consistently superior.

The Ohio Sheep Improvement Association recently supported GALC's efforts to expand the direct market for premium lamb with a marketing grant. It is anticipated that this grant, together with producer support and continued investment by GALC in the Great American Lamb

Company.com website, will develop the online visibility of GALC to where SHF will be unable to supply sufficient lambs for GALC and GALC will begin to purchase premium lambs from other producers in Ohio and beyond.

Why Dorsets? SHF has produced Dorsets since 1964, so they were a natural place to start. Extensive research, including taste tests, has demonstrated that Dorsets can provide the genetic seed stock for the World's finest lamb and that, with out of season breeding, Dorsets are unmatched in their ability to produce a superior lamb product consistently and on a year round basis.

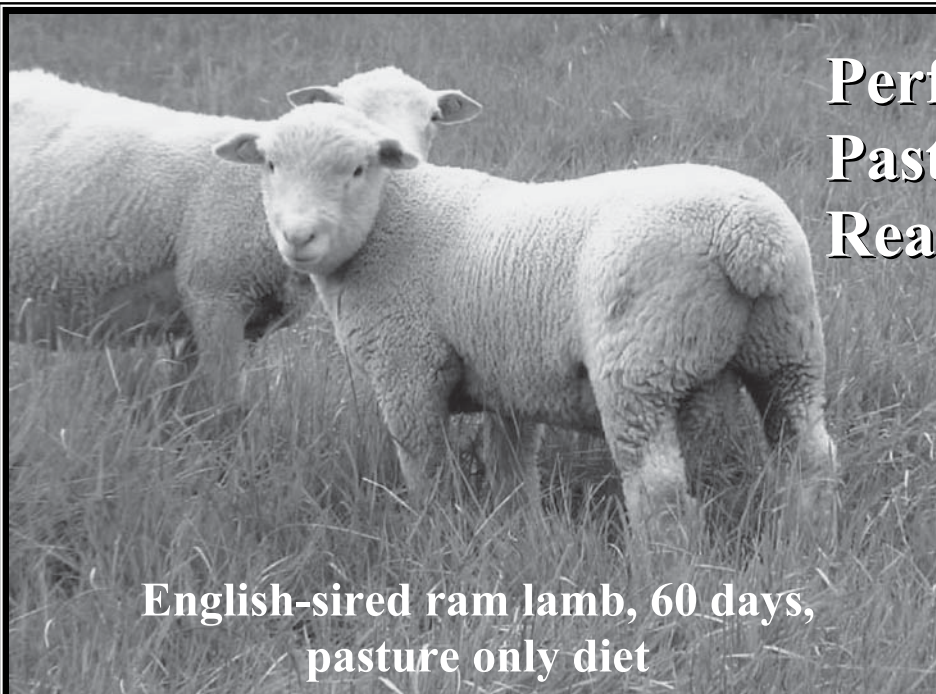
Breeders interested in assisting with this effort to direct market a premium American lamb product that features Dorsets are encouraged to contact Ben Calkins by e-mail (BenCalkins@GMail.com), by telephone ((440) 796-4592) or by mail at 11510 Music Street, Newbury, Ohio 44065.

2008 PENNSYLVANIA RAM TESTS RESULTS

The Pennsylvania Ram Test Sale was held August 2, 2008 at the Pennsylvania Department of Agriculture Livestock Evaluation Center in Pennsylvania Furnace, PA. The Dorset breed had a total of 13 rams sold.

Melana Lovell of Linden, PA had the ram testing with the highest Avg Daily Gain at 1.09 and ADG Ratio at 130 in the Senior Dorset division. A ram from Roger D. Bowman, Lenhartsville, PA was the highest indexing ram in the Junior Dorset division. The ram had a ADG of 1.17 and had an ADG Ratio of 124. Both of these rams also sold very well as the Lovell ram topped his class as he sold for \$1100 to John Jacob Waltz, MD. The Bowman entry sold for \$375 to Janet Huber, PA.

Other high selling rams were from Hollystone Farm, Paoli, PA who sold a senior ram to Walter Gross, RI for \$800 and Penn State University sold a senior ram to Kevin Pask, NY for \$500. In the junior class Meemie Sullivan sold a ram to Zachary Dale Teter for \$375. The 13 Dorset rams averaged \$453.85.



**English-sired ram lamb, 60 days,
pasture only diet**

**Performance Tested
Pasture Raised
Ready to Work**

*First to import Polled
Dorset genetics from
England in over 50 years*

**Breeding Stock
Available**

K Bar K Farm

Ken, Kathy and Nathan Soder
www.kbarkfarm.com

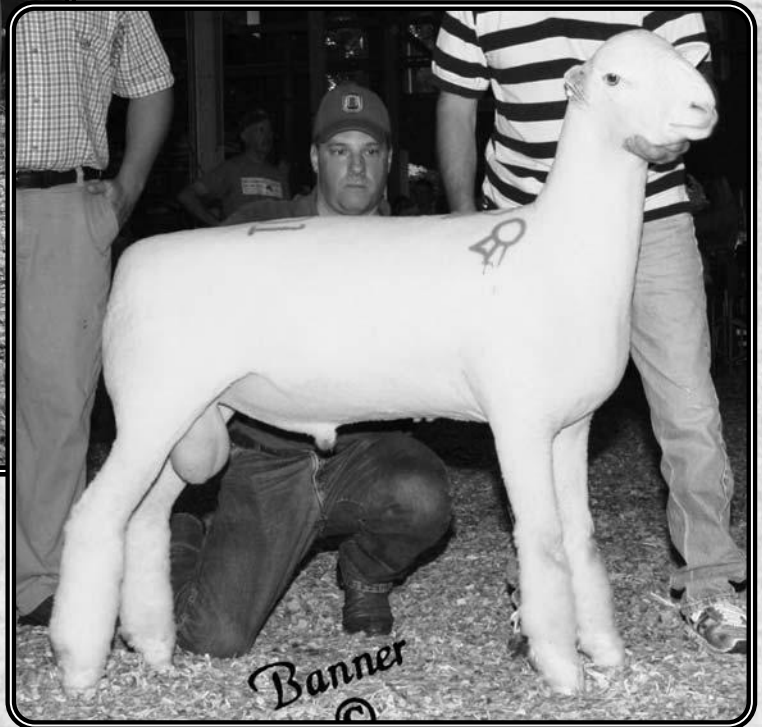
Phone: 814-669-1374
5867 Eberle Road • Petersburg, PA 16669
kbarkfarm@earthlink.net

More BIG Winners At Sedalia!



Grand Champion Ewe National Dorset Show & Sale

Grand Champion Ewe 2008 National Dorset Show & Sale, Sedalia, Missouri. Thanks to Olivia Waggoner, PA for purchasing this "High Definition" daughter.



Reserve Grand Champion Ram National Dorset Show & Sale

Reserve Grand Champion Ram 2008 National Dorset Show & Sale, Sedalia, Missouri, sold to Makayla Shaffner, Poynter Sheep Farm and Crome Dorsets of Illinois. He topped the Dorset Sale at \$7,000. Sired by "High Definition" and dammed by "En Fuego".

BEST CONSIGNMENT AWARDS

We were extremely honored to win both the National Polled Dorset Sale Townsend Best Consignment award as well as the prestigious Lyman McPike Best Overall Consignment award at the Midwest Stud Ram Sale.

Congratulations!

Mona Lisa Pettersson, WA – Grand Champion Ewe and Supreme Champion Ewe at both Oregon and California State Fairs sired by Twin Oaks "Cartel" and dammed by a daughter of Twin Oaks "Double Major". Mona also had Reserve Champion Ewe at Oregon on Twin Oaks 632 purchased at the Ohio Dorset Sale.

Klampe Polled Dorsets, OR – Grand Champion Ram at both Oregon and California State Fairs and Supreme Champion Ram at California on Twin Oaks "Sony" purchased privately as a lamb in 2007.



Junior Champion Ewe National Dorset Show & Sale

First Winter Ewe Lamb and Junior Champion Ewe at the National Dorset Show & Sale sold to Kristina Repasky, MN.

THE GARY SAYLOR FAMILY

Gary • Becky • Cameron • Kelsey • Cole

...And At The Ohio State Fair!!



Grand Champion Ram Ohio State Fair

"Corazon" – The tequila just keeps getting better! "Corazon" was first Spring Ram Lamb and Grand Champion Ram at the Ohio State Fair. He was also Supreme Champion Ram for Cole at the Ohio State Fair Junior Show. "Corazon" is sired by "Don Julio" who was sired by "Jose Cuervo". "Corazon" is dammed by "Little Hottie", the first place Early Fall Ewe Lamb at 2007 NAILE. Just ask Eric Bruns how good Corazon (the tequila) is!



Reserve Grand Champion Ewe Ohio State Fair

"Misty May" – First Early Fall Ewe Lamb and Reserve Grand Champion Ewe at the Ohio State Fair. She was also Champion Ewe for Cole at the Ohio State Fair Junior Show and Great Lakes Regional Junior Show. She is a full sister to "Best Bet", the \$11,000 stud we sold to Lauden Acres at the 2007 Ohio Dorset Sale.



1st Intermediate Ram Lamb Ohio State Fair

"Optimus Prime" – First Intermediate Ram lamb at the Ohio State Fair. Sired by "High Definition" and dammed by Twin Oaks 230, Reserve Champion Ewe at the 2003 All American Junior Show. We'll have a few fall and winter lambs sired by him.

"A Driving Force in the Dorset Breed"



**TWIN OAKS
DORSETS**



937/464-7214

19570 County Rd. 75 • Belle Center, OH 43310 • gsaylor@watchtv.net

YOUTH NEWS

DORSET KIDS SHINE AT THE ALL-AMERICAN JUNIOR SHOW

The All-American Junior Show was held at the Missouri State Fairgrounds in Sedalia, MO on July 4-7, 2008. The Polled and Horned Dorset exhibitors once again put on an excellent show as a total of 142 Dorsets went through the showing. The Dorset breed had many overall winners and even did well in the 3-on-3 Basketball tournament with Kevin LaFavor, Austin Kuhring and Anna Trotter all participating in the finals.

The Junior Dorset Association hosted a lunch BBQ and meeting on Saturday where the Dorset exhibitors and their families attended. It was a well attended get together and thanks go to the Junior Directors' Natalie Harmeyer, Monica Ebert, and Sarah Bush for coordinating the event. Also, thank you to the Bush and Martin Families for the cooking and serving the food. It was great to have this social event so the Dorset kids get to know each other.

The Dorset show results are later in this newsletter with pictures of several champions. Kaitlyn Verhaeghe, Argos, IN was the Polled Dorset Top Gun Winner and Sarah Bush, Blairstown, MO was the Horned Dorset Top Gun. Congratulations to both of these young ladies!

The Dorset breed had overall winners in several competitions. Thomas Crome, IL was the Class 1 Showmanship Winner; Olivia Nichols, KY was the Class 4 Showmanship Winner, Cruz Nichols, KY won the Class 8 Showmanship, Sarah & Emma Johnson, OH were the Class 1 Team Showmanship Winners, Kaitlyn & Kelsey Verhaeghe were the Class 3 Team Showmanship Winners, Sarah Bush, MO was the Senior Logo Winner, Cassidy Ward, MO was the Beginner Logo Winner and the Beginner Skill-A-Thon Winner. Dorset exhibitor LauraLee Martin, Chandler, OK won a scholarship as she is currently attending Oklahoma State University.

The Dorset juniors are a great bunch of kids and it was great to see them do so well in the show, and it is a pleasure to work with all of them! The future of the Dorset breed is in very good hands.

Next year's All-American Junior Show will be held in Greenville, OH on July 6-8, 2009. The Ohio Breed Associations are planning on making this an exceptional show for our youth. Make plans now to attend and we'll see you there next year!

ALL-AMERICAN SHOW SCENES



2008 DORSET EWE FUTURITY UPDATE

The Dorset Ewe Futurity Program has enjoyed another great year thanks to the support of all the breeders nominating their ewe lamb entries in the consignment sales. Without your support this successful futurity program would not be possible! A total of \$5275 has been raised to pay out to the participants of the polled and horned ewe lamb divisions. On the back cover of this newsletter is a list of all the nominators! We were fortunate to have four group nominators this year. Riverwood Farms Superior Farms, Spilde Brothers and the Cassell Family were group nominators at the 2008 sales.

227 ewe lambs have been nominated this year, 86 were tattooed for participation and to date the CDC office has received point record forms from 33 of these junior owners. Don't forget that you don't have to show at a regional junior show to be eligible for premiums but exhibitors are still rewarded for attending regional shows as they are awarded double points. **These point record forms need to be received in the CDC office within 21 days of the date of the show or they will not count. They also need to be signed by show management. Also, the deadline to send in Regional Point Record forms into the CDC Office is Nov. 10th.** This allows the office enough time to tabulate final regional placing before Louisville. Those regional points will carry over to your Louisville junior show placing if you are attending that show to compete for the separate Louisville premiums.

Keep sending those point record forms in on the yearling ewes. This year the yearling ewe futurity will also end at the National Junior Dorset Show in Louisville like the ewe lamb program. We have five yearling ewes participating in this year's program. This enables us to recognize the winners at that time.

JUNIOR ASSOCIATION ANNUAL MEETING TO BE HELD IN LOUISVILLE

The National Junior Dorset Breeders Association will hold its annual meeting in Louisville on Saturday night, November 15, 2008 at 7:00 PM in the Kentucky Exposition Center. The meeting will feature election of next year's directors, presentation of the scholarship awards and a pizza party for all the Junior Dorset members and their families. See you there!

RIVERWOOD FARMS

Watch for “PRIMO” as he defends his title in Louisville!

...And the rest of our show flock.

RF 4684 RR “PRIMO”
2007 NAILE Champion



CONGRATULATIONS

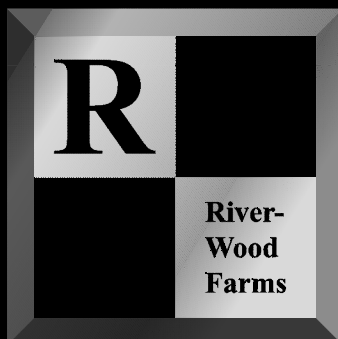
Congratulations to These Junior Exhibitors with their Riverwood Sheep...

- Ethan Hodel, IL – with RF 4880 RR “Journey” – Champion Ram at the North Central Regional Junior Dorset Show. Also with RF 4822 – 1st Place Slick Shorn Yearling Ewe at the North Central Regional Junior Dorset Show.
- Grace Murphy – with RF 4992 RR – 1st Place October Ram Lamb at the Kentucky State Fair Open Show.

FALL LAMBS LOOK GREAT

Our fall lambs are on the ground and look great. 2009 is looking very promising. The lambs are sired by Twin Oaks 615 “Dow Jones”, the Record Selling Dorset Ram; RF 4684 RR “Primo”, 2007 NAILE Champion Ram; RF 4881, “Journey’s” twin brother who is sired by “Primo” and dammed by “Wooden Pickle’s” flush mate; and RF 4890 RR, another “Primo” son and out of Penn State 5176, “Too Much’s” full sister.

Thanks Very Much to Our Summer Help...Cruz Nicols and Lisa Kessler...You Guys are the Best!



**RIVERWOOD
FARMS**
NSFCP Member
Since 1994

Dorsets • Dorpers • White Dorpers

ERIC BRUNS, Shepherd • Cell: 614/430-1436
TOM HENRY, Farm Manager DAVE HARMANN, Associate
SHAWN KENNEDY, Assistant Farm Manager



**JAMES
KLINGBEIL**
Owner

1000 West Powell Rd.
Powell, Ohio 43065

Barn: 614/885-6268
Fax: 614/885-2851
riverwood_farms@msn.com
www.riverwoodfarms.com

2008 JR SUMMER SHOW RESULTS

All-American Junior Show

July 6, 2008

Sedalia, Missouri

Judge: Heath Geiman

-HORNED DORSETS:

-Winter Ram Lamb: 1)**Champion:** Sarah Bush, MO

-Spring Ram Lamb: 1)**Reserve Champion:** Mike Houfe, WI; 2)Will Parker, AL; 3)Tom Parker, AL

-Yearling Ewe: 1) & 2) Sarah Bush, MO; 3)Mike Houfe, WI

-Pair of Yearling Ewes: 1)Sarah Bush, MO

-Early Fall Ewe Lamb: 1)**Champion:** Sarah Bush, MO; 2)Will Parker, AL; 3)Tom Parker, AL

-Late Fall Ewe Lamb: 1)**Reserve Champion:** Mike Houfe, WI; 2) & 3)Kristen Shippee, MA

-Winter Ewe Lamb: 1)Sarah Bush, MO

-Spring Ewe Lamb: 1)Tom Parker, AL; 2)Will Parker, AL



All American Junior Show
Champion Horned Ewe - Yearling Ewe
Sarah Bush, MO



All American Junior Show
Res. Champion Horned Ewe - Late Fall Ewe
Michael Houfe, WI

-Pair of Ewe Lambs: 1)Sarah Bush, MO; 2)Kristen Shippee, MA

-Young Flock: 1)Sarah Bush, MO

-Best Four Head of Ewes: 1)Sarah Bush, MO

-Market Lamb: 1)**Champion:** Tom Parker, AL

-Top Gun: Sarah Bush, Blairstown, MO

-POLLED DORSETS:

-Early Fall Ram Lamb: 1)Olivia Waggoner, PA; 2)Sidney DeVries, IL; 3)Jody Kabat, IL; 4)Kevin LaFavor, MO; 5)Austin Kuhring, IL; 6)Will Aycock, AL; 7)Tom Parker, AL

-Late Fall Ram Lamb: 1)Kali Wolkow, SD; 2)Will Parker, AL

-Winter Ram Lamb: 1)**Champion:** Thomas Crome, IL; 2)Sidney DeVries, IL; 3)Trent Nichols, KY; 4)Cassidy Ward, MO

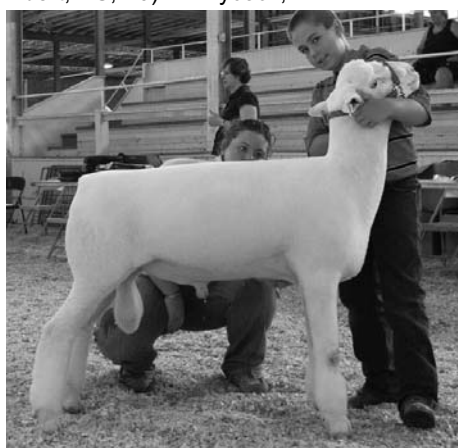
-Spring Ram Lamb: 1)**Reserve Champion:** Lexi Wolkow, SD; 2)Kaitlyn Verhaeghe, IN; 3)Sidney DeVries, IL; 4)Trent Nichols, KY; 5)Britton Francis, MO; 6)Kevin LaFavor, MO; 7)Klarissa Minish, MO; 8)Cassidy Ward, MO; 9)Monica Ebert, KS; 10)Will Aycock, AL



All American Junior Show
Champion Horned Ram - Winter Lamb
Sarah Bush, MO



All American Junior Show
Res. Champion Horned Ram - Spring Lamb
Michael Houfe, WI



All American Junior Show
Champion Polled Ram - Winter Lamb
Thomas Crome, IL



All American Junior Show
Res. Champion Polled Ram - Spring Lamb
Lexi Wolkow, SD



**All American Junior Show
Champion Polled Ewe - Yearling Ewe
Kaitlyn Verhaeghe, IN**

MO; 12)Anna Trotter, IN; 13)Emma Johnson, OH; 14)Klarissa Minish, MO; 15)Will Aycock, AL; 16)Will Parker, AL
-Late Fall Ewe Lamb: 1)Reserve Champion: Thomas Crome, IL; 2)Kaitlyn Verhaeghe, IN; 3)Thomas Crome, IL; 4)Sidney DeVries, IL; 5)Lauralee Martin, OK; 6)Mike Houfe, WI; 7)Will Aycock, AL; 8)Anna Trotter, IN; 9)&10)Klarissa Minish, MO; 11)Tom Parker, AL
-Winter Ewe Lamb: 1)&2)Kaitlyn Verhaeghe, IN; 3)Lauralee Martin, OK; 4)Sidney DeVries, IL; 5)Lexi Wolkow, SD; 6)Britton Francis, MO; 7)Sidney DeVries, IL; 8)Lauralee Martin, OK; 9)Will Aycock, AL; 10)Monica Ebert, KS
-Spring Ewe Lamb: 1)Kaitlyn Verhaeghe, IN; 2)Kali Wolkow, SD; 3)Trent Nichols, KY; 4)Olivia Waggoner, PA; 5)&6)Sidney DeVries, IL; 7)Mike Houfe, WI; 8)&9)Lauralee Martin, OK; 10)Cassidy Ward, MO; 11)Klarissa Minish, MO; 12)Elizabeth Shriver, MD; 13)Monica



**All American Junior Show
Res. Champion Polled Ewe - Late Fall Lamb
Thomas Crome, IL**

Ebert, KS; 14)Cassidy Ward, MO
-Pair of Ewe Lambs: 1)Kaitlyn Verhaeghe, IN; 2)Thomas Crome, IL; 3)Kali Wolkow, SD; 4)Olivia Waggoner, PA; 5)Trent Nichols, KY; 6)Sidney DeVries, IL; 7)Lauralee Martin, OK; 8)Mike Houfe, WI; 9)Britton Francis, MO; 10)Klarissa Minish, MO; 11)Cassidy Ward, MO
-Young Flock: 1)Thomas Crome, IL; 2)Kaitlyn Verhaeghe, IN; 3)Olivia Waggoner, PA; 4)Trent Nichols, KY; 5)Kali Wolkow, SD; 6)Sidney DeVries, IL; 7)Britton Francis, MO; 8)Cassidy Ward, MO; 9)Klarissa Minish, MO
-Best Four Head of Ewes: 1)Kaitlyn Verhaeghe, IN; 2)Olivia Waggoner, PA; 3)Kali Wolkow, SD; 4)Lauralee Martin, OK; 5)Sidney DeVries, IL; 6)Mike Houfe, WI; 7)Cassidy Ward, MO; 8)Klarissa Minish, MO
-Lightweight Market Lamb: 1)Reserve Champion: Lauralee Martin, OK; 2)Stephanie Corin Mayes, OK; 3)Laurie



**All American Junior Show
Champion Polled Market Lamb -Heavywgt.
Tory Vanderwey, IN**



**All American Junior Show
Res. Ch. Polled Market Lamb - Lightwgt.
Lauralee Martin, OK**

Fitch, OK; 4)Zoe Mayes, OK; 5)Cruz Nichols, KY; 6)Kaitlyn Verhaeghe, IN; 7)Holly Swearingen, KS; 8)Stephanie Corin Mayes, OK; 9)Laurie Fitch, OK
-Heavyweight Market Lamb: 1)Champion: Tory Vanderwey, IN; 2)Lauren Wibben, IL; 3)Natalie Harmeyer, IN; 4)&5)Monica Ebert, KS; 6)Kaitlyn Verhaeghe, IN; 7)Brandi Henderson, IN; 8)Jansyn Van Horn, KS; 9)Logan Van Horn, KS
-Top Gun: Kaitlyn Verhaeghe, Argos, IN

New England Reg. Junior Show
July 18-20, 2008
West Springfield, MA
Judge: Steve Taylor

-POLLED DORSETS:

-Senior Showmanship: 1)Ashley Rasys, MA; 2)Tirzah Rasys, MA; 3)Rachael Gately, CT; 4)Becky Couture, CT
-Junior Showmanship: 1)Ross Beed, CT
-First Year Showmanship: 1)Evan Syme, CT
-Yearling Ram: 1)Champion: Rachael Gately, CT
-Senior Ram Lamb: 1)Reserve

FLASH: Oregon State Fair Winners!

◆ RESERVE GRAND CHAMPION POLLED DORSET RAM ◆

...and...

◆ SUPREME CHAMPION GET-OF-SIRE ◆

"Rumble" and "Incision" fall lambs are on the ground and looking great!!



REYNOLDS STOCK FARM

One of the Premier Dorset Flocks in the United States

The Reynolds & Wopat Families

9119 Stayton Road SE • Aumsville, OR 97325
 Phone: 503/769-5112 • E-mail: rsf@wvi.com

Check out our website:
reynoldsstockfarm.com

2008 JR SUMMER SHOW RESULTS, CONT.



New England Regional Show
Champion Polled Ram - Yearling
Rachael Gately, CT



New England Regional Show
Res. Champion Polled Ram - Senior Lamb
Rachael Gately, CT



New England Regional Show
Champion Polled Ewe - Late Fall Lamb
Rachael Gately, CT

Champion: Rachael Gately, CT

-Junior Ram Lamb: 1)Rachael Gately, CT; 2)Loren Riccioni, NJ; 3)Kara Riccioni, NJ; 4)&5)Tirzah Rasys, MA; 6)Ashley Rasys, MA

-Slick Sheared Ram Lamb: 1)&2)Tirzah Rasys, MA

-Pair of Ram Lambs: 1)Rachael Gately, CT; 2)Tirzah Rasys, MA

-Best Headed Ram: Yearling Ram- Rachael Gately, CT

-Yearling Ewe: 1)**Reserve Champion:** Kara Riccioni, NJ; 2)Loren Riccioni, NJ; 3)Kara Riccioni, NJ; 4)Rachael Gately, CT; 5)&6)Tirzah Rasys, MA

-Pair of Yearling Ewes: 1)Kara Riccioni, NJ; 2)Tirzah Rasys, MA

-Late Fall Ewe Lamb: 1)**Champion:** Rachael Gately, CT

-Winter Ewe Lamb: 1)Tirzah Rasys, MA; 2)Ross Beed, CT; 3)&4)Ashley Rasys, MA

-Spring Ewe Lamb: 1)Kara Riccioni, NJ; 2)Rachael Gately, CT; 3)Loren Riccioni, NJ; 4)Rachael Gately, CT; 5)Ashley Rasys, MA; 6)Evan Syme, CT; 7)Tirzah Rasys, MA; 8)&9)Becky Couture, CT

-Pair of Ewe Lambs: 1)Rachael Gately, CT; 2)Tirzah Rasys, MA; 3)Ashley Rasys, MA; 4)Becky Couture, CT

-Best Headed Ewe: Ewe Lamb-Ashley Rasys, MA

-Best Pair of Bred & Owned Lambs: 1)Loren Riccioni, NJ; 2)Kara Riccioni, NJ; 3)Rachael Gately, CT; 4)Tirzah Rasys, MA; 5)Ashley Rasys, MA

-Exhibitors Flock: 1)Rachael Gately, CT; 2)Kara Riccioni, NJ; 3)Loren Riccioni, NJ; 4)Tirzah Rasys, MA; 5)Ashley Rasys, MA

-Market Lamb: 1)&2)Isaac Rasys, Brimfield, MA

-HORNED DORSETS:

-Junior Showmanship: 1)Kaitlin Lewis, NH; 2)Kristen Shippee, MA

-Novice Showmanship: 1)Jade Zimmerman, PA; 2)Austin Grace, NH; 3)Tyler Wright, NH

-Yearling Ram: 1)Kristen Shippee, MA

-Junior Ram Lamb: 1)**Champion:** Austin Grace, NH; 2)**Reserve Champion:** Kaitlin Lewis, NH; 3)Jade Zimmerman, PA

-Best Headed Ram: Junior Ram Lamb- Kaitlin Lewis, NH

-Yearling Ewe: 1)&2)Jade Zimmerman, PA

-Pair of Yearling Ewes: 1)Jade Zimmerman, PA

-Early Fall Ewe Lamb: 1)Jade Zimmerman, PA

-Late Fall Ewe Lamb: 1)**Champion:** Austin Grace, NH; 2)&3)Kristen Shippee, MA

-Winter Ewe Lamb: 1)Kaitlin Lewis, NH

-Spring Ewe Lamb: 1)**Reserve Champion:** Kaitlin Lewis, NH; 2)Tyler Wright, NH; 3)Austin Grace, NH; 4)&5)Jade Zimmerman, PA; 6)&7)Kristen Shippee, MA

-Pair of Ewe Lambs: 1)Austin Grace, NH; 2)Kaitlin Lewis, NH; 3)Jade Zimmerman, PA; 4)Kristen Shippee, MA

-Best Headed Ewe: Spring Ewe Lamb- Kristen Shippee, MA

-Best Pair of Lambs: 1)Kaitlin Lewis, NH; 2)Kristen Shippee, MA

-Exhibitors Flock: 1)Austin Grace, NH; 2)Kaitlin Lewis, NH; 3)Jade Zimmerman, PA; 4)Kristen Shippee, MA



New England Regional Show
Res. Champion Polled Ewe - Yearling
Kara Riccioni, NJ



New England Regional Show
Best Headed Polled Ram - Yearling
Rachael Gately, CT



New England Regional Show
Best Headed Polled Ewe - Winter Lamb
Ashley Rasys, MA



New England Regional Show
Champion Horned Ram - Junior Lamb
Austin Grace, NH



New England Regional Show
Res. Champion Horned Ram - Junior Lamb
Kaitlin Lewis, NH



New England Regional Show
Champion Horned Ewe - Late Fall Lamb
Austin Grace, NH



New England Regional Show
Res. Champion Horned Ewe - Spring Lamb
Kaitlin Lewis, NH



New England Regional Show
Best Headed Horned Ram - Junior Lamb
Kaitlin Lewis, NH



New England Regional Show
Best Headed Horned Ewe - Spring Lamb
Kristen Shippee, MA

Stony Point Ranch

POLLED DORSETS



Stony Point 10S – Our 2nd Spring Ewe Lamb
at the 2008 California State Fair.



Watch for our lambs
by Riverwood 4777,
high selling ram at the
2008 Ohio Dorset Sale.



Poynter D50 – Our 3rd Yearling Ewe
at the 2008 California State Fair. The Big Ewe.

Thanks to Tor Sorensen for the great job with the show flock!

Quality Stock For
Sale at the Ranch!

Ken Wagner

1445 Stony Point Road • Petaluma, CA 94952 • 916/716-0312

Thanks to All
Our 2008 Buyers!

2008 JR SUMMER SHOW RESULTS, CONT.



2008
Great Lakes Regional
Junior Dorset Exhibitors

Great Lakes Reg. Junior Show
August 11, 2008
Columbus, Ohio
Judge: Mike Stitzlein

Showmanship Winner Age 15-17:

Jenna Davis, OH

Showmanship Winner Age 13-14: Tyler Myers, OH

Showmanship Winner Age 9-12:

Kamron Paulus, OH

Showmanship Winner Age 5-8: Kassidy Oliger, IN

POLLED DORSETS:

-Senior Ram Lamb: 1)**Champion:** Sean Beskid, OH; 2)Tyler Myers, OH; 3)Kodi Paulus, OH

-Winter Ram Lamb: 1)Tyler Myers, OH

-Junior Ram Lamb: 1)**Reserve**

Champion: Cole Saylor, OH; 2)Kodi Paulus, OH; 3)Jenna Davis, OH

-Yearling Ewe: 1)Jenna Davis, OH; 2)Sean Beskid, OH; 3)Lindsay Coleman, OH; 4)Tyler Myers, OH; 5)Kamron Paulus, OH; 6)Kodi Paulus, OH

-Slick Shorn Yearling Ewe: 1)Jenna Davis, OH; 2)Tyler Myers, OH; 3)Kodi Paulus, OH



Great Lakes Regional Show
Champion Polled Ram - Senior Lamb
Sean Beskid, OH



Great Lakes Regional Show
Res. Champion Polled Ram - Junior Lamb
Cole Saylor, OH



Great Lakes Regional Show
Champion Polled Ewe - Senior Lamb
Cole Saylor, OH



Great Lakes Regional Show
Res. Champion Polled Ewe - Junior Lamb
Cole Saylor, OH

-Senior Ewe Lamb: 1)**Champion:** Cole Saylor, OH; 2)Sean Beskid, OH; 3)Kodi Paulus, OH; 4)Jenna Davis, OH; 5)Kassidy Oliger, IN; 6)Lindsay Coleman, OH; 7)Jenna Davis, OH

-Winter Ewe Lamb: 1)Kara McCarthy, OH; 2)Tyler Myers, OH; 3)Kodi Paulus, OH

-Junior Ewe Lamb: 1)**Reserve**
Champion: Cole Saylor, OH; 2)Kara McCarthy, OH; 3)Lindsay Coleman, OH; 4)Tyler Myers, OH; 5)Kodi Paulus, OH; 6)Lindsay Coleman, OH

-Slick Shorn Ewe Lamb: 1)Tyler Myers, OH; 2)Jenna Davis, OH; 3)&4)Adam High; 5)Kodi Paulus, OH; 6)Kamron Paulus, OH



Great Lakes Regional Show
Senior Showmanship Winner
Jenna Davis, OH



Great Lakes Regional Show
Intermediate Showmanship Winner
Tyler Myers, OH



Great Lakes Regional Show
Junior Showmanship Winner
Kamron Paulus, OH



Great Lakes Regional Show
Novice Showmanship Winner
Kassidy Olinger, IN



Great Lakes Regional Show
Champion Horned Ram - Senior Lamb
Christina Shotts, OH



Great Lakes Regional Show
Res. Champion Horned Ram - Spring Lamb
Christina Shotts, OH

HORNED DORSETS:

- Senior Ram Lamb:** 1)**Champion:** Christina Shotts, OH; 2)Kaleb Vondenhuevel, OH; 3)Kayla Gerfen, OH
- Winter Ram Lamb:** 1)Christina Shotts, OH; 2)Kaleb Vondenhuevel, OH
- Spring Ram Lamb:** 1)**Reserve Champion:** Christina Shotts, OH; 2)Alex Root, OH; 3)Jade Zimmerman, PA
- Slick Shorn Ram Lamb:** 1)Christina Shotts, OH; 2)Alex Root, OH
- Yearling Ewe:** 1)&2)Christina Shotts, OH; 3)&4)Jade Zimmerman, PA; 5)Kayla Gerfen, OH; 6)&7)Kaleb Vondenhuevel, OH
- Slick Shorn Yearling Ewe:** 1)Christina Shotts, OH; 2)Kayla Gerfen, OH; 3)Carey Williams, OH
- Senior Ewe Lamb:** 1)**Champion:** Christina Shotts, OH; 2)Christina Shotts, OH; 3)Brandon O'Dell, OH; 4)John Mohr, OH; 5)Kaleb Vondenhuevel, OH; 6)Ashlynn Olinger, IN; 7)Alex Root, OH; 8)Kayla Gerfen, OH; 9)Jade Zimmerman, PA
- Winter Ewe Lamb:** 1)Christina Shotts, OH; 2)Ashlynn Olinger, IN; 3)Brandon O'Dell, OH; 4)Kaleb Vondenhuevel, OH



Great Lakes Regional Show
Champion Horned Ewe - Senior Lamb
Christina Shotts, OH



Great Lakes Regional Show
Res. Champion Horned Ewe - Spring Lamb
Christina Shotts, OH

- Spring Ewe Lamb:** 1)**Reserve Champion:** Christina Shotts, OH; 2)Ashlynn Olinger, IN; 3)Alex Root, OH; 4)&5)Jade Zimmerman, PA
- Slick Shorn Ewe Lamb:** 1)Christina Shotts, OH; 2)Kayla Gerfen, OH; 3)Alex Root, OH

Western Regional Junior Show
August 18, 2008
Sacramento, CA
Judge: Keith Berry

- Yearling Ram:** 1)**Champion:** Georgia Perkins, CA; 2)Josh Polich, CA
- Fall Ram Lamb:** 1)**Reserve Champion:** Craig Diener, CA; 2)Josh Polich, CA; 3)Cole Pruett, CA; 4)Kayla Marks, CA
- Slick Shorn Fall Ram Lamb:** 1)Kayla Marks, CA
- Spring Ram Lamb:** 1)Katy Byers, CA; 2)Cole Pruett, CA; 3)Kayla Marks, CA
- Pair of Ram Lambs:** 1)Cole Pruett, CA; 2)Kayla Marks, CA
- Yearling Ewe:** 1)**Supreme Champion & Champion Dorset Ewe:** Katy Byers, CA; 2)Cole Pruett, CA; 3)Kayla Marks, CA; 4)Bridgette Eldridge, CA; 5)Katy Byers,



Western Regional Show
Champion Polled Ram - Yearling
Georgia Perkins, CA



Western Regional Show
Res. Champion Polled Ram - Fall Lamb
Craig Diener, CA

2008 JR SUMMER SHOW RESULTS, CONT.



Western Regional Show
Supreme & Champion Polled Ewe - Yearling
Katy Byers, CA



Western Regional Show
Res. Champion Polled Ewe - Fall Lamb
Makayla Spaman, CA



Western Regional Show
Winning Young Flock & Premier Breeder
Cole Pruett, CA

- Slick Shorn Fall Ewe Lamb:** 1)Makayla Spaman, CA; 2)Riggs Lokka, CA
- Spring Ewe Lamb:** 1)Makayla Spaman, CA; 2)Cole Pruett, CA; 3)Bridgette Eldridge, CA; 4)Katy Byers, CA; 5)Craig Diener, CA; 6)Josh Polich, CA; 7)Katy Byers, CA
- Pair of Ewe Lambs:** 1)Cole Pruett, CA; 2)Josh Polich, CA; 3)Katy Byers, CA
- Young Flock:** 1)Cole Pruett, CA; 2)Katy Byers, CA; 3)Josh Polich, CA
- Get of Sire:** 1)Cole Pruett, CA
- Flock:** 1)Cole Pruett, CA; 2)Katy Byers, CA; 3)Josh Polich, CA
- Best Pair:** 1)Cole Pruett, CA; 2)Kayla Marks, CA; 3)Katy Byers, CA; 4)Josh Polich, CA
- Herdsmen Award:** 1)Kayla Marks, CA; 2)Josh Polich, CA; 3)Katy Byers, CA; 4)Cole Pruett, CA
- Premier Breeder:** Cole Pruett, CA

Great Plains Reg. Junior Show September 28, 2008 Tulsa, OK Judge: Tyler Pierson

- Fall Ram Lamb:** 1)**Reserve Champion:** Kristen Peters, TX
- Winter Ram Lamb:** 1)**Champion:** Kristen Peters, TX
- Spring Ram Lamb:** 1)Chelsey Peters, TX
- Yearling Ewe:** 1)**Reserve Grand & Senior Champion:** Chelsey Peters, OK; 2)**Reserve Senior Champion:** Kristen Peters, TX; 3)Lauralee Martin, OK; 4)Kristen Peters, TX; 5)Zoe Mayes, OK; 6)Lauralee Martin, OK; 7)Chelsey Peters, TX; 8)Amber Allen, OK; 9)Chelsey Carpenter, OK; 10)Erin Hayhurst, OK; 11)Daniel King, OK; 12)Zoe Mayes, OK
- Pair of Yearling Ewes:** 1)Kristen Peters, TX; 2)Chelsey Peters, TX; 3)Lauralee Martin, OK; 4)Zoe Mayes, OK

- Fall Ewe Lamb:** 1)Chelsey Peters, TX; 2)Lauralee Martin, OK
- Winter Ewe Lamb:** 1)**Reserve Junior Champion:** Chelsey Peters, TX; 2)Lauralee Martin, OK; 3)Kristen Peters, TX; 4)Chelsey Peters, TX; 5)Lauralee Martin, OK
- Early Spring Lamb:** 1)Kristen Peters, TX; 2)Chelsey Peters, TX; 3)Monica Ebert, KS; 4)Jessica Downey, OK; 5)Lauralee Martin, OK
- Late Spring Ewe Lamb:** 1)**Grand & Junior Champion:** Kristen Peters, TX; 2)Lauralee Martin, OK; 3)Corin Mayes, OK; 4)Lauralee Martin, OK; 5)Chelsey Carpenter, OK; 6)Corin Mayes, OK
- Pair Ewe Lambs:** 1)Kristen Peters, TX; 2)Chelsey Peters, TX; 3)Lauralee Martin, OK; 4)Corin Mayes, OK
- Junior Champion Showman:** Corin Mayes, OK
- Intermediate Champion Showman:** Amber Allen, OK
- Senior Champion Showman:** Lauralee Martin, OK



Great Plains Regional Show
Champion Polled Ram - Winter Lamb
Kristen Peters, TX



Great Plains Regional Show
Res. Champion Polled Ram - Fall Lamb
Kristen Peters, TX



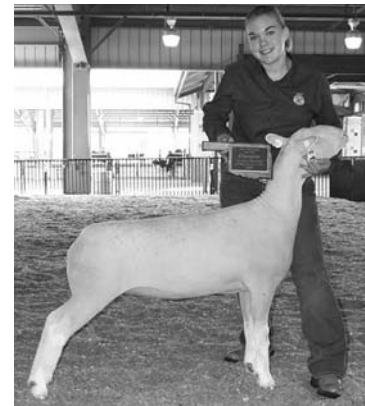
Great Plains Regional Show
Champion Polled Ewe - Late Spring Lamb
Kristen Peters, TX



Great Plains Regional Show
Res. Champion Polled Ewe - Yearling
Chelsey Peters, TX



National Junior Dorset Association
Great Plains Director
Monica Ebert helping out at the
Great Plains Regional Dorset Show in
Tulsa, OK



Great Plains Regional Show
Intermediate Showmanship Winner
Amber Allen, OK



Great Plains Regional Show
Junior Showmanship Winner
Corin Mayes, OK



Great Plains Regional Show
Senior Showmanship Winner
Lauralee Martin, OK

5D

Thank you Midwest Stud Ram buyers!

5D

5D Polled Dorsets would like to thank all our buyers and those who bid on our sheep at the Midwest Stud Ram sale. We appreciate your interest and wish you success with your purchases.

Our momentum is growing and our young lambs were popular. With the addition of our new Chrome stud, "AC", we believe our upcoming lamb crop will bring together the quality you demand.

Special thanks to Tyler Pierson, Craig Beckmeier, Todd Weaver and the gang for your help at Sedalia.

Our buyers....

Brian Hooyer, Iowa
Feb ram lamb, Jan ewe lamb
Gordon Moncier, Tennessee
Oct ewe lamb, Feb ewe lamb
(both futurity)
Jeremy Crouch, Illinois
Feb ewe lamb
Bill Bamberg, Oklahoma
Mar ewe lamb

5D Polled Dorsets
2223 104th St., Perkins, OK 74059
405-880-7485 realdiel@provalue.net

We kept Assert. We leased him to Roy Hayes. Watch for Roy's Assert lambs at the 2009 sales.

5D

5D

2008 SUMMER SALES RESULTS

WISCONSIN INVITATIONAL SALE

April 26, 2008

Janesville, Wisconsin

-Yearling Ram:(2 lots avg.\$312.50):

1)**Reserve Champion:** Pine Ends Dorsets, MN to Scheifelbien Farms LLC, Kimball, MN \$375

2)Bear Lake Enterprises, WI to J & K Dorsets, Genoa City, WI \$250

-Fall Ram Lamb: (1 lot avg. \$500):

1)**Champion:** Bear Lake Enterprises, WI to KayCee Smith, Mt. Gilead, OH \$500

-Spring Ram Lamb: (2 lots avg. \$150):

1)MGM Dorsets, IN to Petersen Sheep, Arlington, MN \$150

2)Double C Dorsets, IA to Jackie Jackson, Clinton, WI \$150

-Yearling Ewes (8 lots avg. \$359.38):

1)**Reserve Champion:** Houfe Dorsets, WI to Jonathan Albright, Rock City, IL \$800

2)Spilde Dorsets, WI to Jonathan Albright, Rock City, IL \$300

3)Spilde Dorsets, WI to Bill & Pam Sheahan, Delavan, WI \$275

4)MGM Dorsets, IN to Tyler Lobdell, Lena, IL \$450

5)Spilde Dorsets, WI to Bill & Pam Sheahan, Delavan, WI \$300

6)MGM Dorsets, IN to Double C Dorsets, Melbourne, IA \$325

7)Pines End Dorsets, MN to J & K Dorsets, Genoa City, WI \$225

8)Pines End Dorsets, MN to Allen Scheele, Stockton, IL \$200

-Fall Ewe Lamb (4 lots avg. \$687.50):

1)**Champion:** Spilde Dorsets, WI to KayCee Smith, Mt. Gilead, OH \$1500

2)Spilde Dorsets, WI to KayCee Smith, Mt. Gilead, OH \$750

3)Bear Lake Enterprises, WI to Bill & Pam Sheahan, Delavan, WI \$250

4)Spilde Dorsets, WI to Shirley Scheele, Stockton, IL \$250

-Spring Ewe Lamb (3 lots avg. \$150):

1)MGM Dorsets, IN to Petersen Sheep, Arlington, MN \$150

2)Double C Dorsets, IA to Linneman's Show Lambs, Genoa City, WI \$150

3)MGM Dorsets to Linneman's Show Lambs, Genoa City, WI \$175

20 LOTS GROSSED \$7,525.00 AVERAGING \$376.25

CORNBELT NATIONAL SALE

May 24, 2008

Des Moines, Iowa

-Fall Ram Lamb (2 lots avg. \$600):



Wisconsin Invitational Sale
Champion Ram - Early Fall Lamb
Bear Lake Enterprises, WI

1)**Champion:** Riverwood Farms, OH to Marvin L. Koerper, Geneseo, IL \$400

2)**Reserve Champion:** Dew Drop Farms, MN to Jonathan Albright, Rock City, IL \$800

-January Ram Lamb (2 lots avg. \$287.50):

1)Riverwood Farms, OH to Double C Dorsets, Melbourne, IA \$375

2)John Flinchum, CO to Bruce Koopman, State Ctr., IA \$200

-Yearling Ewe (2 lots avg. \$450):

1)Riverwood Farm, OH to Thiels King Settlement Farm, Lebanon, PA \$500

2)Dew Drop Farms, MN to Thiels King Settlement Farm, Lebanon, PA \$400

-Early Fall Ewe Lamb (4 lots avg. \$375):

1)**Reserve Champion:** Riverwood Farms, OH to Marvin L. Koerper, Geneseo, IL \$700

2)Dew Drop Farms, MN to Double C Dorsets, Melbourne, IA \$350

3)John Flinchum, CO to MHW Farm, Colfax, IA \$225

4)John Flinchum, CO to Chris Meyer, Arenzville, IL \$225

-Late Fall Ewe lamb (2 lots avg. \$375):

1)**Champion:** Dew Drop Farms, MN to Jonathan Albright, Rock City, IL \$550

2)John Flinchum, CO to Chris Meyer, Arenzville, IL \$200

-January Ewe Lamb (2 lots avg. \$200):

1)John Flinchum, CO to Jonathan Albright, Rock City, IL \$200

2)Marvin L. Koerper, IL to Lynn Blank, Port Washington, WI \$200

-February Ewe Lamb (1 lot avg. \$200):

1)Marvin L. Koerper, IL to Lynn Blank, Port Washington, WI \$200

22 LOTS GROSSED \$8,275.00 AVERAGING \$376.14

NUGGET ALL-AMERICAN

June 1, 2008

Sparks, Nevada

POLLED DORSETS:

-Fall Yearling Ram (1 lot avg. \$500):

1)WadeCo Livestock, UT to Newell Richens, Myton, UT \$500

-Spring Yearling Ram (2 lots avg. \$600):

1)**Reserve Senior Champion:** Gankofskie Farms, ME to Cardoza's Diamond C Ranch, Los Gatos, CA \$900

2)WadeCo Livestock, UT to Jose Obieta, Battle Mountain, NV \$300

-Early Fall Ram Lamb (2 lots avg. \$300):

1)**Reserve Grand & Senior Champion:** Mona Lisa Pettersson, WA to Allison Collins, Merced, CA \$400

2)Nelson Dorsets, CO to Mule Head Growers, Red Bluff, CA \$200

-Late Fall Ram Lamb (2 lots avg. \$800):



Wisconsin Invitational
Champion Ewe - Early Fall Lamb
Spilde Brothers, WI

1)**Grand & Junior Champion:**Rick Klampe, OR to Rebekah Sapp, Aumsville, OR \$1400
2)Two Willow Ranch, CA to Mule Head Growers, Red Bluff, CA \$200

-December Ram Lamb (1 lot avg. \$325):

1)**Reserve Junior Champion:** WadeCo Livestock, UT to Michael II Dorsets, Quincy, WA \$325

-January Ram Lamb (1 lot avg. \$200):

1)Beaver Creek Ranch, CA to Mule Head Growers, Red Bluff, CA \$200

-Fall Yearling Ewe (2 lots avg. \$325):

1)**Reserve Senior Champion:** Mona Lisa Pettersson, WA to Freitas/Bianchi, Hollister, CA \$400

2)Cardoza's Diamond C, CA to Marie Rohr, Red Bluff, CA \$250

-Spring Yearling Ewe (7 lots avg. \$425):

1)Gankofskie Farms, ME to Freitas/Bianchi, Hollister, CA \$1000

2)Northern Starr Livestock, MN to Janet Tullock, Ramons, CA \$550

3)Mona Lisa Pettersson, WA to South Butte Sheep, Sutter, CA \$400

4)Reynolds Stock Farm, OR to Bridgette Eldridge, Winters, CA \$200

5)Cardoza's Diamond C, CA to Kayla Marks, Woodland, CA \$375

6)Cardoza's Diamond C, CA to A & R Livestock, Rocky Ford, CO \$250

7)WadeCo Livestock, UT to Jose Obieta, Battle Mtn., NV \$200

-Early Fall Ewe Lamb (2 lots avg. \$675):

1)**Reserve Grand & Senior Champion:** Rick Klampe, OR to Paul & Gail Davis, Jefferson, OR \$1100

2)Nelson Dorsets, CO to Kadee Buckmaster, Fallon, NV \$250

-Late Fall Ewe Lamb (4 lots avg. \$825):

1)**Grand & Junior Champion:** Rick Klampe, OR to Paul & Gail Davis, Jefferson, OR \$1500

2)**Reserve Junior Champion:** Northern Starr Livestock, MN to Freitas/Bianchi, Hollister, CA \$1100

3)Mona Lisa Pettersson, WA to Bridgette Eldridge, Winters, CA \$500

4)Green River Farms, CA to Bridgette Eldridge, Winters, CA \$200

-December Ewe Lamb (1 lot avg. \$300):

1)Green River Farms, CA to Bridgette Eldridge, Winters, CA \$300

-January Ewe Lamb (3 lots avg. \$575):

1)Green River Farms, CA to Bridgette Eldridge, Winters, CA \$325

2)Gankofskie Farms, ME to Freitas/Bianchi, Hollister, CA \$1050

3)Mindy Gibson, MO to Kinsay Rau, Chico, CA \$350

-Late Spring Ewe Lamb (1 lot avg \$750):

1)Gankofskie Farms, ME to Jackson Christian, Aumsville, OR \$750

29 LOTS GROSSED \$15,475.00 AVERAGING \$533.62

HORNED DORSETS

-Yearling Ewe (1 lot avg. \$950):

1)**Grand & Senior Champion:** Monte Forster, OR to Ridge Betts, Felton, DE \$950

1 LOT GROSSED \$950 AVERAGING \$950.00

DORSET WETHER SIRES & DAMS

-Yearling Ram (1 lot avg. \$200):

1)**Senior Champion:** Griffith Dorsets, WY to Marie Rohr, Red Bluff, CA \$200

-January Ram Lamb (2 lots avg. \$250):

1)**Reserve Grand & Reserve Junior Champion:** Brooke Knapp, CO to A & R Livestock, Rocky Ford, CO \$300

2)Two Willow Ranch, CA to Meghan Biggs, Malin, OR \$200

-Late Spring Ram Lamb (1 lot avg. \$300):

1)**Grand & Junior Champion:** Brooke Knapp, CO to Cassandra Ding, Lone, CA \$300

-Yearling Ewe (3 lots avg. \$650):

1)**Grand & Senior Champion:** UC Davis, CA to Spring Creek Ranch Club Lambs, Sebastopol, CA \$900

2)**Reserve Grand & Reserve Senior Champion:** Griffith Dorsets, WY to Spring Creek Ranch Club Lambs, Sebastopol, CA \$550

3)Griffith Dorsets, WY to Janet Tullock, Ramona, CA \$500

-January Ewe Lamb (3 lots avg. \$250):

1)**Reserve Junior Champion:** Brooke Knapp, CO to A & R Livestock, Rocky Ford, CO \$350

2)Two Willow Ranch, CA to Pete Albers, Santa Rosa, CA \$200

3)Two Willow Ranch, CA to Pete Albers, Santa Rosa, CA \$200

-Late Spring Ewe Lamb (3 lots avg. \$341.67):

1)Junior Champion: Brooke Knapp, CO to Amos Stevens, Sebastopol, CA \$350

2)UC Davis, CA to Spring Creek Club Lambs, Sebastopol, CA \$400

3)Brooke Knapp, CO to Susan Young, Live Oak, CA \$275

13 LOTS GROSSED \$4,725.00 AVERAGING \$383.46

GREAT LAKES SALE

May 24, 2008

Wooster, OH

-Yearling Ram (2 lots avg. \$275):

1)**Reserve Champion:** Dylan & Shielina Nohner, MN to Roberta Anderson, Hustonville, KY \$350

2)Anderson Family, KY to Lanny Seaman, Shiloh, OH \$200

-Fall Ram Lamb (2 lots avg. \$537.50):

1)**Champion:** Bradford Farms, OH to Sean Beskid, Byesville, OH \$875

2)Behnfeldt Dorsets, OH to OARDC, Wooster, OH \$200



**Nugget All-American Sale
Champion Ram - Late Fall Lamb
Rick Klampe, OR**



**Nugget All-American Sale
Champion Ewe - Late Fall Lamb
Rick Klampe, OR**



**Great Lakes Sale
Champion Polled Ram - Fall Lamb
Bradford Farms, OH**

2008 SUMMER SALES RESULTS, cont.



Great Lakes Sale
Champion Polled Ewe - Fall Lamb
Bradford Farms, OH



Midwest National Dorset Sale
Champion Horned Ram - Yearling
Mark lunghuhn & Family, IN



Midwest National Dorset Sale
Res. Champion Horned Ram - Yearling
Cassell Horned Dorsets, VA

-Spring Ram Lamb (3 lots avg. \$300):

- 1)Bel-Mar Farm, OH to Larry & Mary Ellen Chipps & Family, McConnellsville, OH \$425
- 2)Down Valley Farm, NY to Michael Murphy, McConnellsville, OH \$250
- 3)Brian Halt, NY to George T. McConnell, West Salem, OH \$225

-Yearling Ewe (4 lots avg. \$287.50):

- 1)**Reserve Champion:** Dylan & Shielina Nohner, MN to DeGroats Dorsets, Dayton, OH \$450
- 2)Dylan & Shielina Nohner, MN to Larry & Mary Ellen Chipps & Family, McConnellsville, OH \$300
- 3)Guy McKean, PA to George T. McConnell, West Salem, OH \$200
- 4)DeGroats Dorsets, OH to George T. McConnell, West Salem, OH \$200

-Fall Ewe Lamb (1 lot avg. \$500):

- 1)**Champion:** Bradford Farms, OH to Larry & Mary Ellen Chipps & Family, McConnellsville, OH \$500

-Spring Ewe Lamb (1 lot avg. \$200):

- 1)Brian Halt, NY to George T. McConnell, West Salem, OH \$200

13 LOTS GROSSED \$4,375.00 AVERAGING \$336.54

NATIONAL DORSET SALE MIDWEST STUD RAM SALE June 25-27, 2008 Sedalia, Missouri

HORNED DORSETS:

-Yearling Ram (3 lots avg. \$1550):

- 1)**Grand & Senior Champion:** Mark lunghuhn & Family, IN to



Midwest National Dorset Sale
Best Headed Horned Ram - Yearling
Cassell Horned Dorsets, VA



Midwest National Dorset Sale
Champion Horned Ewe - Yearling
Cassell Horned Dorsets, VA



Midwest National Dorset Sale
Res. Champion Horned Ewe- Late Fall Lamb
Cassell Horned Dorsets, VA

Christina Shotts, Quincy, OH \$1500

2)**Reserve Grand & Reserve Senior Champion:** Cassell Horned Dorsets, VA to Mike Torrone, Palmerton, PA \$1600

3)Cassell Horned Dorsets, VA to John Mrozinski, San Pierre, IN \$1550

-Early Fall Ram Lamb (1 lot avg. \$550):

- 1)Mark lunghuhn & Family, IN to Wayne Thiel, Norwich, NY \$550

-Late Fall Ram Lamb (2 lots avg. \$550):

- 1)**Junior Champion:** Galleher Farms, OH to Patrick Lyster, Ontario, Canada \$300
- 2)**Reserve Junior Champion:** Cassell Horned Dorsets, VA to Heather Look, Hubbard, OR \$800

-Spring Ram Lamb (1 lot avg. \$350):

- 1)Tim Gadsby, PA to D. Lance Carter, Bakersfield, CA \$350

-Yearling Ewe (4 lots avg. \$800):

- 1)**Grand & Senior Champion:** Cassell Horned Dorsets, VA to Christina Shotts, Quincy, OH \$1200
- 2)**Reserve Senior Champion:** Cassell Horned Dorsets, VA to Kevin Whitmer, Bradford, OH \$100
- 3)Mark lunghuhn & Family, IN to Weldon Colbert, Bakersfield, CA \$600
- 4)Galleher Farms, OH to Mary Ann Cassell, Wytheville, VA \$400

-Early Fall Ewe Lamb (1 lot avg. \$400):

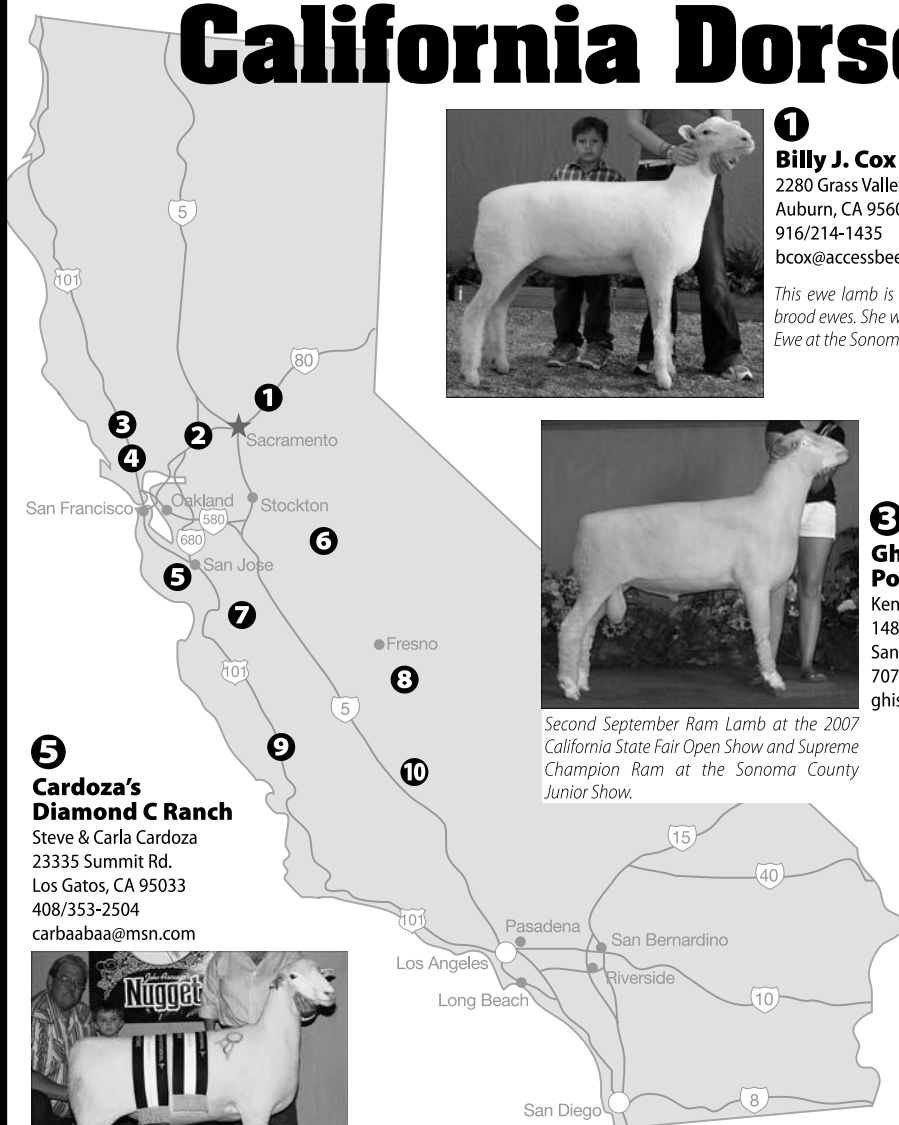
- 1)Mark lunghuhn & Family, IN to Wayne Thiel, Norwich, NY \$400

-Late Fall ewe Lamb (5 lots avg. \$870):

- 1)**Reserve Grand & Junior Champion:** Cassell Horned Dorsets, VA to Heather Look, Hubbard, OR \$1800
- 2)**Reserve Junior Champion:** Tim Gadsby, PA to Kevin Whitmer, Bradford, OH \$1000
- 3)Schwartz Horned Dorsets, OH to Wayne Thiel, Norwich, NY \$450

Quality genetics from the west coast...

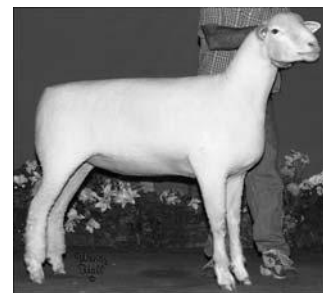
California Dorset Breeders



1 Billy J. Cox
2280 Grass Valley Hwy #118
Auburn, CA 95603
916/214-1435
bcox@accessbee.com

This ewe lamb is typical of our brood ewes. She was Champion Ewe at the Sonoma County Fair.

2 Green River Farms
Johnnie Johnson
25265 Carlsbad Ave.
Davis, CA 95616
530/979-0028
johjohnson@excite.com



GRF 07-47, Reserve Grand Champion Yearling Ewe at the 2008 California State Fair. Also 1st Spring Ewe Lamb at the 2007 California State Fair and 4th at the NAILE.



3 Ghiselin's Polled Dorsets
Ken & Erlene Ghiselin
1485 Olivet Rd.
Santa Rosa CA 95401
707/546-9981
ghiselin@sonic.net

Second September Ram Lamb at the 2007 California State Fair Open Show and Supreme Champion Ram at the Sonoma County Junior Show.

5 Cardoza's Diamond C Ranch
Steve & Carla Cardoza
23335 Summit Rd.
Los Gatos, CA 95033
408/353-2504
carbaabaa@msn.com



Grand Champion Ewe at the 2007 Nugget All-American Show & Sale in Reno. Sold to Spilde Brothers and Bob Egan.

4 Stony Point Ranch
Ken Wagner
1445 Stony Point Rd.
Petaluma, CA 94952
916/716-0312
hdorset@rcip.com



Undeclared Polled Dorset Ram in class during 2006 and 2007.



8 Penfold Dorsets
Ken, Teri, Jared & Cody Penfold
14585 E. Caruthers Ave.
Kingsburg, CA 93631
559/897-4878
penfarm@inreach.com

10 Ewephoric! Horned Dorsets
Gregg & Marlene Bell
Shafter, CA
800/742-5510
ewephoric@bak.rr.com



West Coast Horned Dorset breeding with traditional breed character, style and muscle.



Freitas/Bianchi Dorsets

6
Allan & Norma Freitas
10042 Cleveland Ave.
Oakdale, CA 95361
209/847-1017
freitas1017@sbcglobal.net

7
Rodney & Kelly Bianchi
7430 Lovers Lane
Hollister, CA 95023
831/637-0790
kelly_a_bianchi@yahoo.com

Junior Champion Ewe (Late Fall Ewe Lamb) at the 2007 Nugget All-American Show & Sale in Reno. Sold to Coupe Ranch and King Ranch.



9 KD Dorsets
Jerry Dean
9225 N. Santa Margarita Rd.
Atascadero, CA 93422
805/466-9721
jerry4dean@sbcglobal.net

Champion November Ram Lamb at several California County Fairs. Sired by the 3rd Yearling Ram at the 2005 National Dorset Sale in Reno.

Contact Any Of These Dorset Breeders For Quality Seedstock!

2008 SUMMER SALES RESULTS, cont.



Midwest National Dorset Sale
Best Headed Horned Ewe - Yearling
Cassell Horned Dorsets, VA

4)Schwartz Horned Dorsets, OH to Kristen Shippee, Charlmont, MA \$700

5)Schwartz Horned Dorsets, OH to Wayne Thiel, Norwich, NY \$400

-Slick Shorn Fall Ewe Lamb (1 lot avg. \$700):

1)Lance Thompson, OH to Weldon Colbert, Bakersfield, CA \$700

-Winter Ewe Lamb (1 lot avg. \$450):

1)Galleher Farms, OH

\$750

11)Van Bair Farms, PA to Jordy Barnette, Russellville, TN \$300

12)Olivia Waggoner, PA to Austin Wilkerson, Paris, MO \$250

-Late Fall Ram Lamb (3 lots avg. \$591.67):

1)**Grand & Senior Champion:** Spilde Dorsets, WI to Tyler Lobdell, Lena, IL \$900

2)Wolkow Dorsets, SD to Gerald Pfanner & Sons, Hunnewell, MO \$375

3)Maple Hollow Farm, PA to Mike Caskey, Holland, MN \$500

-Winter Ram Lamb (13 lots avg. \$1282.69):

1)**Reserve Grand & Junior Champion:** Twin Oaks Dorsets, OH to Makayla Shaffner, IL & Poynter Sheep Farm, IL \$7000

2)**Reserve Junior Champion:** Haven Point Dorsets, PA to Paul & Nancy Wissinger, Sinking Sprgs., PA \$2800

3)Twin Oaks Dorsets, OH to Maureen Lien & Daughters, Cambridge, WI \$1500

4)Superior Farms, OK to Gerald Pfanner & Sons, Hunnewell, MO \$450

5)Riverwood Farms, OH to Larry Luitjens, Ashton, IA \$575

6)Dew Drop Farms, MN to PRF Farms - Treston Eads, Lovington, IL \$600

7)Lauden Acres, PA to Marvin L. Koerper, Geneseo, IL \$300

8)Highfield Dorsets., OH to Matthew Syme, South Windsor, CT \$2100

9)Bel-Mar Farm, OH to Chelsey Peters, Nevada, TX \$300

10)McCarthy Dorsets, OH to Chris Meyer, Arenzville, IL \$250

11)Chapman Sheep Farm, MI to Jim Campbell, Pickford, MI \$400

12)Highfield Dorsets, OH to Lynn Blank, Port Washington, WI \$200

13)Chapman Sheep Farms, MI to Amanda Roberts, Crossville, TN \$200

-Spring Ram Lamb (17 lots avg. \$425):

1)Twin Oaks Dorsets, OH to Marvin Koerper, Geneseo, IL \$1400

2)Kolb Dorsets, IL to Robert Davidson, Bend, OR \$375

3)Mindy Gibson, MO to Miller's Livestock, Woodburn, OR \$350

4)Peters Polled Dorsets, TX to Kyle Sappington, MO \$275

5)Riverwood Farms, OH to Katie Linman, Buffalo, MO \$1200

6)Ram & Ewe Farm, OH to Lynn Blank, Port Washington, WI \$750

7)McCarthy Dorsets, OH to Arndt Acres, Norwood, MN \$300

8)Haven Point Dorsets, PA to Lamar FFA, Lamar, OK \$300

9)Millennium Farms, IN to Nathan Miller, Annapolis, MN \$200

10)5D Polled Dorsets, OK to Hooyer Club Lambs, Sioux Center, IA \$250



Midwest National Dorset Sale
Champion Polled Ram - Late Fall Lamb
Spilde Brothers, WI

to Wayne Thiel, Norwich, NY \$450

-Slick Shorn Winter Ewe Lamb (2 lots avg. \$362.50):

1)Lance Thompson, OH to Wayne Thiel, Norwich, NY \$375

2)Galleher Farms, OH to \$350 Wayne Thiel, Norwich, NY

-Spring Ewe Lamb (3 lots avg. \$400):

1)Galleher Farms, OH to Mark lunghuhn & Family, Princeton, IN \$400

2)Mark lunghuhn & Family, IN to Lavon Wiles, Hicksville, OH \$400

3)Cassell Horned Dorsets, VA to Fred Ansolabehere, Bakersfield, CA \$400

24 LOTS GROSSED \$17,675.00 AVERAGING \$736.46

POLLED DORSETS:

-Yearling Ram (6 lots avg. \$283.33):

1)**Reserve Senior Champion:** Olivia Waggoner, PA to Southfield and Alan & Rebecca Peterson, Leyden, MA \$500

2)Lake View Farm, VA to Chris Meyer, Arenzville, IL \$275

3)Peters Polled Dorsets, TX to Elizabeth Ferguson, Marquand, MO \$200

4)Shamrock Farms, NY to John Brasfield, King, NC \$250

5)Poverty Point Farm, PA to Morris & Terri Dicke, Goodhue, MN \$275

6)Sugarloaf Dorsets, MN to Katie Williams, Dunnegan, MO \$200

-September Ram Lamb (12 lots avg. \$1241.67):

1)Olivia Waggoner, PA to Rolling Hills, Tracy, MN \$300

2)Cedar Lane Farm, WI to Jeffrey Cole, Grand View Acres, Ulster, PA \$2500

3)Spilde Dorsets, WI to Mark & Rhonda Blair, Boynton, OK \$1200

4)Riverwood Farms, OH to Verle Kolb, Toluca, IL \$3000

5)Spilde Dorsets, WI to Charles T. Hammond III, Halls, TN \$850

6)Van Bair Farms, PA to Coffman & Simon Liggett, Mt. Solon, VA \$950

7)Riverwood Farms, OH to Marvin Koerper, Geneseo, IL \$600

8)Egan Dorsets, IL to D & J Moses, Kasota, MN \$450

9)Dew Drop Farms, MN to Dylan & Shielina, Nohner, Watkins, MN \$3750

10)Van Bair Farms, PA to Kendrick Dorsets, Vermont, IL



Midwest National Dorset Sale
Res. Champion Polled Ram - Winter Lamb
Twin Oaks Dorsets, OH



Midwest National Dorset Sale
Best Headed Polled Ram - Fall Lamb
Cedar Lane Farm, WI

- 11)McCarthy Dorsets, OH to Britton W. Francis, Paris, MO \$200
- 12)Wolkow Polled Dorsets, SD to John Fought, Carlisle, PA \$250
- 13)Shamrock Farms, NY to Annette Machado, Manzanola, CO \$375
- 14)McCarthy Dorsets, OH to Otto Brothers, Winthrop, MN \$400
- 15)Ram & Ewe Farm, OH to Danielle Tilly, Morrison, MO \$200
- 16)Shamrock Farms, NY to Hooyer Club Lambs, Sioux Center, IA \$200
- 17)Sugarloaf Dorsets, MN to Annette Machado, Manzanola, CO \$200

-Fall Yearling Ewe (7 lots avg. \$864.29):

- 1)**Reserve Grand & Reserve Champion Ewe:** Lauden Acres, PA to Dan Troutman, Dronsife, PA \$1750
- 2)Superior Farms, OK to Nelson Dorsets, Eaton, CO \$1100
- 3)Lauden Acres, PA to Kendrick Dorsets, Vermont, IL \$1300
- 4)Superior Farms, OK to Levi Moore, Kirksville, MO \$500
- 5)Haven Point Dorsets, PA to Levi Moore, Kirksville, MO \$500
- 6)Riverwood Farms, OH to Olivia Waggoner, East Berlin, PA \$500
- 7)Lauden Acres, PA to Wayne Thiel, Norwich, NY \$400

-Spring Yearling Ewe (38 lots avg. \$946.71):

- 1)Haven Point Dorsets, PA to Ram & Ewe Farm, South Solon, OH \$5000
- 2)Spilde Dorsets, WI to Egan Dorsets, Freeport, IL \$1200
- 3)Lauden Acres, PA to PRF Farms - Treston Eads, Lovington, IL \$6250
- 4)Haven Point Dorsets, PA to Green River Farms, Davis, CA \$1600
- 5)Superior Farms, OK to Spilde Brothers-Kent & Dan Stoughton, WI \$2100
- 6)Spilde Dorsets, WI to Cassidy & Elissa Ward, Marthasville, MO \$1000
- 7)Dew Drop Farms, MN to Sidney DeVries, Freeport, IL \$1000
- 8)Prairie Lane Farm, MO to Crouch Dorsets, Decatur, IL \$1000
- 9)Lauden Acres, PA to Cedar Lane Farm, Manawa, WI \$1000

- 10)Lauden Acres, PA to Johanna Dejoria, Newburg, OR \$1000
- 11)Millennium Farms, IN to Johanna Dejoria, Newburg, OR \$1150
- 12)Olivia Waggoner, PA to Crouch Dorsets, Decatur, IL \$500
- 13)Spilde Dorsets, WI to Crouch Dorsets, Decatur, IL \$850
- 14)Lauden Acres, PA to Crouch Dorsets, Decatur, IL \$600
- 15)Spilde Dorsets, WI to Crouch Dorsets, Decatur, IL \$800
- 16)Maple Hollow Farm, PA to Levi Moore, Kirksville, MO \$400
- 17)Good-Ewe Dorsets, IA to Britton W. Francis, Paris, MO \$750
- 18)Millennium Farms, IN to Fruechte Family Dorsets, Erwin, SD \$350
- 19)Olivia Waggoner, PA to Mark Landers & Ray Cole, Hartville, MO \$400
- 20)Lauden Acres, PA to Lynn Blank, Port Washington, WI \$650

other high sellers:

- 25)Haven Point Dorsets, PA to Crouch Dorsets, Decatur, IL \$700
- 26)Superior Farms, OK to \$700 Weldon Colbert, Bakersfield, CA
- 33)Spilde Dorsets, WI to Egan Dorsets, Freeport, IL \$850
- 37)Riverwood Farms, OH to Superior Farms, Yukon, OK \$850

-Slick Shorn Yearling Ewe (7 lots avg. \$464.29):

- 1)Peters Polled Dorsets, TX to Henslee & Daughters Show Lambs, Seville, OH \$275
- 2)Superior Farms, OK to Ben Lawyer, Carlock, IL \$800
- 3)Kristina Repasky, MN to Austin Kuhring, Dieterich, IL \$400
- 4)Riverwood Farms, OH to Sugarloaf Dorsets, Pipestone, MN \$900
- 5)Kristina Repasky, MN to Danielle Tilly, Morrison, MO \$250
- 6)Riverwood Farms, OH to Annette Machado, Manzanola, CO \$275
- 7)Superior Farms, OK to Arndt Acres, Norwood, MN \$350

-Early Fall Ewe Lamb (22 lots avg. \$815.91):

- 1)**Grand & Senior Champion:** Twin Oaks Dorsets, OH to Olivia Waggoner, East Berlin, PA \$3000
- 2)Riverwood Farms, OH to Marvin L. Koerper, Geneseo, IL \$1200
- 3)Superior Farms, OK to Sarah Bush, Blairstown, MO \$1300
- 4)Lauden Acres, PA to Dan Troutman, Dronsife, PA \$2200
- 5)Spilde Dorsets, WI to Kristina Repasky, Prior Lake, MN \$1800

The Sharpsville Sheep Company



We will be bringing Yearling Rams, Yearling Ewes and Fall Ewe Lambs to the 2009 Ohio and Midwest Sale and hopefully the National Sale in Reno!

Breeders of the Best Headed Ohio Sale & National Champion Ram in 2007! Pictured at left.

~ Registered Horned Dorset Sheep ~

Rick & Donna Grimme

4482 N 200 W ♦ Sharpsville, Indiana 46068 ♦ 765/963-2536

2008 SUMMER SALES RESULTS, cont.



Midwest National Dorset Sale
Champion Polled Ewe - Early Fall Lamb
Spilde Brothers, WI



Midwest National Dorset Sale
Res. Champion Polled Ewe - Yearling
Lauden Acres, PA



Midwest National Dorset Sale
Best Headed Polled Ewe - Spring Lamb
Ram & Ewe Farm, OH

- 6)Spilde Dorsets, WI to Haydens Dorsets, Idaville, IN \$650
- 7)Olivia Waggoner, PA to Marvin L. Koerper. Geneseo, IL \$450
- 8)Haven Point Dorsets, PA to Hunter Sheep Farm, Roseville, IL \$500
- 9)Riverwood Farms, OH to Crouch Dorsets, Decatur, IL \$750
- 10)Spilde Dorsets, WI to Britton W. Francis, Paris, MO \$650
- 11)Lauden Acres, PA to Dan Troutman, Dronsife, PA \$2000
- 12)Spilde Dorsets, WI to Pikeside Farm –The Poitras Family, Brimfield, MA \$575

-Slick Shorn Early Fall Ewe Lamb (1 lot avg. \$300):

- 1)Maple Hollow Farm, PA to La-Rosh Davison, Wichita, KS \$300

-Late Fall Ewe Lamb (20 lots avg. \$566.25):

- 1)Spilde Dorsets, WI to John Passwaters, Bridgeville, DE \$4000
- 2)Spilde Dorsets, WI to Austin Kuhring, Dieterich, IL \$850
- 3)Dew Drop Farms, MN to Dvoark Family, Webster, MN \$1000
- 4)Riverwood Farms, OH to Crouch Dorsets, Decatur, IL \$600
- 5)Van Bair Farms, PA to Scar Dorsets, Badger, IA \$400
- 6)Kristina Repasky, MN to Tracy Sample, Annapolis, MO \$450
- 7)Superior Farms, OK to Weldon Colbert, Bakersfield, CA \$400
- 8)5D Polled Dorsets, OK to Gordon Moncier, Rogersville, TN \$350
- 9)Maple Hollow Farm, PA to Fruechte Family Dorsets, Erwin, SD \$300
- 10)Gene & Marci Sanford, MN to Chris Meyer, Arenzville, IL \$300
- 11)Mindy Gibson, MO to Annette Machado, Manzanola, CO \$200
- 12)Maple Hollow Farm, PA to Curtis Stanly Family, Bismark, SD \$200

-Slick Shorn Late Fall Ewe Lamb (1 lot avg. \$300):

- 1)Myers Polled Dorsets, OH to Donny Hamilton, West Liberty, OH \$300

-Winter Ewe Lamb (16 lots avg. \$614.06):

- 1)**Junior Champion:** Twin Oaks Dorsets, OH to Kristina Repasky, Prior Lake, MN \$1300
- 2)Superior Farms, OK to Nelson Dorsets, Eaton, CO \$900
- 3)Peters Polled Dorsets, TX to Green River Farms, Davis, CA \$1700
- 4)McCarthy Dorsets, OH to Sarah Shultz-Gehring, Centralia, MO \$575
- 5)Riverwood Farms, OH to Sidney DeVries, Freeport, IL \$600
- 6)Van Bair Farms, PA to Fruechte Family Dorsets, Erwin, SD \$250
- 7)Kristina Repasky, MN to Spilde Brothers-Kent & Dan, Stoughton, WI \$1150
- 8)Mindy Gibson, MO to Zach Zant, Paris, TX \$500
- 9)McCarthy Dorsets, OH to Britton W. Francis, Paris, MO \$525
- 10)Gene & Marci Sanford, MN to Charles T. Hammond III, Halls, TN \$300
- 11)Mindy Gibson, MO to J Bond, Galatica, IL \$300

- 12)Myers Polled Dorsets, OH to Alyssa Spruill, Stephenville, TX \$275

-Slick Shorn Winter Ewe Lamb (3 lots avg. \$258.33):

- 1)Peters Polled Dorsets, TX to Bamberg Dorsets, Crescent, OK \$300
- 2)Superior Farms, OK to Bamberg Dorsets, Crescent, OK \$250
- 3)Ram & Ewe Farm, OH to Bamberg Dorsets, Crescent, OK \$225

-Spring Ewe Lamb (28 lots avg. \$469.64):

- 1)**Reserve Junior Champion:** Superior Farms, OK to Kali Wolkow, DeSmet, SD \$1000
- 2)Twin Oaks Dorsets, OH to Emily Passwaters, Bridgeville, DE \$2850
- 3)Kolb Dorsets, IL to Fruechte Family Dorsets, Erwin, SD \$500
- 4)Kolb Dorsets, IL to Cloud Creek Fold, Boynton, OK \$375
- 5)Riverwood Farms, OH to Sidney DeVries, Freeport, IL \$950
- 6)Ram & Ewe Farm, OH to Cloud Creek Fold, Boynton, OK \$425
- 7)McCarthy Dorsets, OH to Sarah Shultz-Gehring Centralia, MO \$550
- 8)McCarthy Dorsets, OH to Nelson Dorsets, Eaton, CO \$750
- 9)Shamrock Farms, NY to Tracy Sample, Annapolis, MO \$250
- 10)5D Polled Dorsets, OK to Gordon Moncier, Rogersville, TN \$325
- 11)Prairie Lane Farm, MO to Superior Farms, Yukon, OK \$600
- 12)Prairie Lane Farm, MO to Weldon Colbert, Bakersfield, CA \$650
- 13)Mueller Family, NE to Lamar FFA, Lamar, AR \$225
- 14)Millennium Farms, IN to John Fought, Carlisle, PA \$200
- 15)Van Bair Farms, PA to Bamberg Dorsets, Crescent, OK \$350
- 16)Mindy Gibson, MO to Bamberg Dorsets, Crescent, OK \$250

104 LOTS GROSSED \$140,875.00 AVERAGING \$726.16

WETHER SIRES & DAMS:

-Yearling Ram (1 lot avg. \$250):

- 1)**Reserve Senior Champion:** Crosby Club Lambs, OH to Gerald & Tracy Gross, Kennard, NE \$250

-Fall Ram Lamb (1 lot avg. \$1200):

- 1)**Senior Champion:** Slack Club Lambs, IN to Brian Balfanz, Waterford, WI \$1200

-Early Spring Ram Lamb (20 lots avg. \$855):

- 1)**Grand & Junior Champion:** Slack Club Lambs, IN to Bamberg Dorsets, Crescent, OK \$1400
- 2)**Reserve Grand & Reserve Junior Champion:** Sidwell Club Lamb, IN to Oklahoma State Univ., Stillwater, OK \$4600
- 3)Hewlett Club Lambs, KS to Jeff Ebert, St. George, KS \$200
- 4)Wasteney Club Lamb, IA to Jeff Ebert, St. George, KS \$800
- 5)Hewlett Club Lambs, KS to Jeff Ebert, St. George, KS \$200
- 6)Piper Club Lambs, IA to William Kuecker, Dixon Springs, TN \$2100



Midwest Classic Wether Sire Sale
Champion Ram - Early Spring Lamb
Slack Club Lambs, IN



Midwest Classic Wether Sire Sale
Res. Champion Ram - Early Spring Lamb
Sidwell Club Lambs, CO



Midwest Classic Wether Sire Sale
Champion Ewe - Yearling
Daniels Club Lambs, IN

- 7) Roger Huntrods & Sons, IA to Joe Brammer, Seamon, OH \$400
8) Boehm Family, MN to Mueller Family, Monroe, NE \$250
9) Slack Club Lambs, IN to Star Dust Sheep Farm, Lincolnville, KS \$2000
10) Nathans Dorsets, NE to Kristen Sass Hatfield, Zanesville, OH \$350
11) Taylor Made Show Lambs, IA to Steve Swenka Family, Fayette, IA \$200
12) Enfield Club Lambs, IA to Eric Luitjens, Burt, IA \$300

-other high sellers:

- 17) Slack Club Lambs, IN to Steve Myers, Tony Xenikis & Michael, Bowers, OH \$2300

-Late Spring Ram Lamb (11 lots avg. \$734.09):

- 1) Daniels Club Lambs, IA to McKinney Club Lambs & Taylor Made Club Lambs, IA \$1000
2) Enfield Club Lambs, IA to Cobblestone Dorsets, Greentop, MO \$250
3) Lauralee Martin, OK to David Clouser, Polk, OH \$200
4) Taylor Made Show Lambs, IA to Steve Swenka Family, Fayette, IA \$300
5) Taylor Made Show Lambs, IA to Ben Lawyer, Carlock, IL \$2800
6) McKinney Club Lambs, IA to Ross Sheep Farm, Rode, OK \$650
7) Taylor Made Show Lambs, IA to Roger Huntrods & Sons, IA \$600
8) Enfield Club Lambs, IA to Eric Stehlik, Dorchester, NE \$275
9) Triple G Farm, IA to Alliance Lamb Production, Harlan, IA \$200
10) Hewlett Club Lambs, KS to Cheryl Sanders, Kirtland, NM \$250
11) Nathans Dorsets, NE to Roger Huntrods & Sons, Collins, IA \$1550

-Yearling Ewe (3 lots avg. \$1366.67):

- 1) **Grand & Senior Champion:** Daniels Club Lambs, IN to Piper Family, Bloomfield, IA \$2750
2) Myers Polled Dorsets, OH to Donny Hamilton, West Liberty, OH \$500
3) Myers Polled Dorsets, OH to Michael Bowers, Mechanicsburg, OH \$850



Midwest Classic Wether Sire Sale
Res. Champion Ewe - Early Spring Lamb
Wasteney Club Lambs, IA

- Fall Ewe Lamb (2 lots avg. \$500):**
1) **Reserve Senior Champion:** Myers Polled Dorsets, OH to Trent & Connie Tomlinson, Lapoint, UT \$700
2) Myers Polled Dorsets, OH to Trent

& Connie Tomlinson, Lapoint, UT \$300


-Early Spring Ewe Lamb (11 lots avg. \$647.73):

- 1) **Reserve Grand & Junior Champion:** Wasteney Club Lambs, IA to Thad Leininger, Piercetown, IN \$1900
2) **Junior Reserve Champion:** Wasteney Club Lambs, IA to Boehm Dorsets, Racine, MN \$675
3) Sidwell Show Lambs, CO to Carson Millican, Seminole, TX \$1200
4) McKinney Club Lambs, IA to Boehm Dorsets, Racine, MN \$600
5) Piper Club Lambs, IA to MacLennar Club Lambs, Byers, CO \$750
6) Boehm Family, MN to William Kuecker, Dixon Springs, TN \$200
7) Boehm Family, MN to Trent & Camie Tomlinson, Lapoint, UT \$450
8) Enfield Club Lambs, IA to Weston Stroope, Sanger, TX \$650
9) Erickson Family Sheep, MN to Fred Ansolabehere, Bakersfield, CA \$200
10) Erickson Family Sheep, MN to Matt Nesseth, Jackson, MN \$200
11) Enfield Club Lambs, IA to Alyssa Spruill, Stephenville, TX \$300

-Late Spring Ewe Lamb (10 lots avg. \$465):

- 1) Enfield Club Lambs, IA to Bill Swoope, Starkville, MS \$500
2) Boehm Family, MN to Haley Netzeke, Lamberton, MN \$200
3) Daniels Club Lambs, IN to Stardust Sheep Farm, Lincolnville, KS \$1200
4) Piper Club Lambs, IA to Matt Nesseth, Jackson, MN \$450
5) Wasteney Club Lambs, IA to Weston Stroope, Sanger, TX \$425
6) Enfield Club Lambs, IA to Fred Ansolabehere, Bakersfield, CA \$600
7) Taylor Made Show Lambs, IA to Fred Ansolabehere, Bakersfield, CA \$450
8) Erickson Family Sheep, MN to Bamberg Dorsets, Crescent, OK \$250
9) Taylor Made Show Lambs, IA to Franz Farms, Bingham Lake, MN \$375
10) Ebert Sheep Farm, KS to William Kuecker, Dixon Springs, TN \$200

**59 LOTS
GROSSED
\$43,500.00
AVERAGING
\$737.29**



ROYAL~S
Graphic Design Services

DALE L. SMITH
Owner/Graphic Designer
royal-s@earthlink.net

Specializing in the Livestock Industry!

17917 Brim Road
Bowling Green, OH 43402
ph/fx 419.352.2332

2008 SUMMER SALES RESULTS, cont.

NEW ENGLAND SALE

July 19, 2008

West Springfield, Massachusetts

POLLED DORSETS:

-Yearling Ram (1 lot avg. \$250):

1)Olivia Waggoner, PA to Michael Orefice, Harwinton, MA \$250

-Early Spring Ram Lamb (1 lot avg. \$400):

1)**Champion:** Southfield Corporation, MA to UConn, Storrs, CT \$400

-Late Spring Ram Lamb (1 lot avg. \$150):

1)Matt Syme, CT to Jeff Jordan, Chichester, NH \$150

-Yearling Ewe (4 lots avg. \$418.75):

1)**Reserve Champion:** Olivia Waggoner, PA to Wayne Thiel, Norwich, NY \$500

2)Olivia Waggoner,PA to Harold & Linda Tyson, Kempton,PA\$450

3)Southfield Corporation, MA to Aidan David, Hardwick, MA \$300

4)Circle W Farm, PA to W.A. Gross, Wakefield, RI \$425

-Fall Ewe Lamb (2 lots avg. \$450):

1)**Champion:** Olivia Waggoner, PA to Emmie Miniter, Sherborn, MA \$425
2)Olivia Waggoner, PA to Emmie Miniter, Sherborn, MA \$475

-Early Spring Ewe Lamb (2 lots avg. \$375):

1)Orchard Valley Farm, MA to Aidan David, Hardwick, MA \$450

2)Matt Syme, CT to Aidan David, Hardwick, MA \$300

-Late Spring Ewe Lamb (3 lots avg. \$316.66):

1)Circle W Farm, PA to Aidan David, Hardwick, MA \$425

2)Matt Syme, CT to Aidan David, Hardwick, MA \$325

3)Jeffrey Cole Family, PA to David Holck, Granville, NY \$200

14 LOTS GROSSED \$5,075.00 AVERAGING \$362.50

HORNED DORSETS:

-Yearling Ewe (1 lot avg. \$1000):

1)**Reserve Champion:** Thomas Walsh, ME to Bentley E. Rathbun, Auburn, ME \$1000

-Fall Ewe Lamb (2 lots avg. \$400):

1)Cassell Horned Dorsets, VA to Wayne Thiel, Norwich, NY \$300

2)Thomas Walsh, ME to Mark lunghuhn & Family, IN \$500

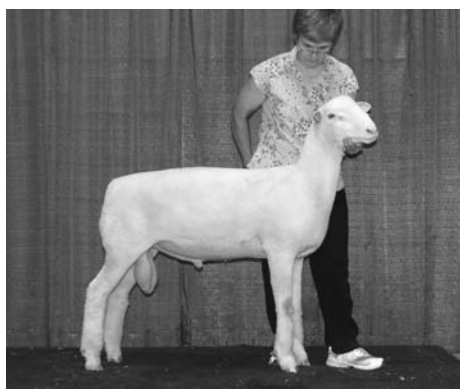
-Early Spring Ewe Lamb (1 lot avg. \$300):

1)Thomas Walsh, ME to Ridge Betts, Felton, DE \$300

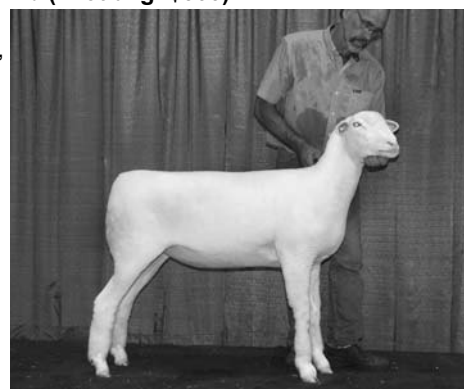
-Late Spring Ewe Lamb (1 lot avg. \$350):

1)Cassell Horned Dorsets, VA to Jacob Charest, Troy, NY \$350

**5 LOTS
GROSSED
\$2,450.00
AVERAGING
\$490.00**



New England Sale
Champion Ram - Early Spring Lamb
Southfield Corporation, MA



New England Sale
Champion Ewe - Fall Lamb
Olivia Waggoner, PA

DORSETS REIGN SUPREME AT THE CALIFORNIA STATE FAIR



Supreme Champion Ram
California State Fair Open Show
"SONY" Saylor Twin Oaks 635
Yearling Ram
Exhibited by: Rick Klampe, Jefferson OR



Supreme Champion Ewe
California State Fair Open Show
Petterson 1806 ET
Early Fall Ewe Lamb
Exhibited by: Mona Lisa Petterson, WA



Supreme Champion Ewe
California State Fair Junior Show
Penfold Farms 716
Yearling Ewe
Exhibited by: Katy Byers, Madera, CA



HATS OFF TO JUNIORS!



SUPERIOR FARMS 7123

Sire: "Winston" • Dam: Penn State 3226

This ewe was purchased at the 2008 Ohio Dorset Sale where she was 2nd Fall Yearling Ewe. She went on to win Champion Dorset Ewe honors at the All American Junior Show for Katelyn Verhaeghe.

Evan Snyder - Farm Manager • Shawn Norman - Flipologist

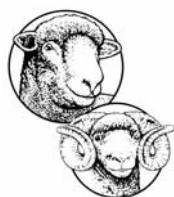
5500 N Sara Road • Yukon, OK 73099 • 405/314-1642 • llamas@superiorfarms.net

2008 DORSET EWE LAMB FUTURITY BREEDER NOMINATORS

SPILE BROTHERS, STOUGHTON, WI
RIVERWOOD FARM, POWELL, OH
SUPERIOR FARMS, OKLAHOMA CITY, OK
CASSELL HORNED DORSETS, WYTHEVILLE, VA
SAYLOR TWIN OAKS, BELLE CENTER, OH
MIKE & WENDY VAN WAGNER, DAUPHIN, PA
HAVEN POINT DORSETS, VOLANT, PA
MITHOEFER DORSETS, LAFAYETTE, IN
MINDY GIBSON, HOUSTONIA, MO
MC CARTHY POLLED DORSETS, SYCAMORE, OH
OLIVIA WAGGONER, EAST BERLIN, PA
WOLKOW POLLED DORSETS, DESMET, SD
MARK & DEBORAH BELL & FAMILY, CASSTOWN, OH
BRADFORD FARMS, WELLINGTON, OH
LAUDEN ACRES, DALMATIA, PA
POVERTY POINT FARM, VOLANT, PA
KOLB DORSETS, TOLUCA, IL
SARAH SHULTZ-GEHRING, CENTRALIA, MO
SCHWARTZ HORNED DORSETS, SPENCERVILLE, OH
REYNOLDS STOCK FARM, ASHLAND, OR
GREEN RIVER FARMS, DAVIS, CA
JOHN FLINCHUM, LONGMONT, CO
PETERS POLLED DORSETS, NEVADA, TX
BRIAN & MELANIE BARKLEY, MANNS CHOICE, PA
KRISTINA REPASKY, PRIOR LAKE, MN
RAM & EWE FARM, SOUTH SOLON, OH
QUARTER MILE FARMS, SANDWICH, IL
CORDRAY DORSETS, BELVIDERE, IL
GALLEHER HORNED DORSETS, MT. GILEAD, OH
GANKOFSKIE FARMS, CLINTON, ME
RICK KLAMPE, JEFFERSON, OR
MYERS POLLED DORSETS, RUSHSVYLVANIA, OH

H. F. SANFORD & SONS, FARIBAULT, MN
DEW DROP FARMS, NEW YORK MILLS, MN
FRANCIS BROTHERS, WILMINGTON, IL
EMILY & LAURA HUNTER, JAMESTOWN, NY
WOODLAND DORSETS, BELLE CENTER, OH
GUY MCKEAN, MERCER, PA
D. JOEL PARKER, EDINBURG, IN
STEP AHEAD DORSETS, GILSON, IL
BERNICE LINMAN, BUFFALO, MO
MAKAYLA SHAFFNER, ANNAPOLIS, IL
MARVIN KOERPER, GENESEO, IL
5D POLLED DORSETS, PERKINS, OK
COURTNEY FITZPATRICK, WAYLAND, NY
SQUIRES HORNED DORSETS, CHESTERVILLE, OH
MARK IUNGHUHN & FAMILY, PRINCETON, IN
KARIN PETERSON, LEYDEN, MA
GRAND VIEW ACRES, ULSTER, PA
SUGARLOAF DORSETS, PIPESTONE, MN
SUNNY VALLEY-BRIAN & CERRITA REED, MANHEIM, PA
ROBERT & LINDA HIGHFIELD & FAMILY, WASH. CH, OH
FREITAS/BIANCHI, OAKDALE, CA
MONA LISA PETTERSSON, BOTHELL, WA
LAROSH-DAVISON DORSETS, WICHITA, KS
CEDAR LANE FARM, MANAWA, WI
HAVEN PT./ BRIAN BENEDICT PTRSHP, NEW CASTLE, PA
BENJAMIN CALKINS, NEWBURY, OH
PURPLE RIBBON FARM, ARCOLA, IL
DUSTY RINCKER, STEWARDSON, IL
KIM ROOT & FAMILY, CARROLL, OH
LANCE THOMPSON, CARROLLTON, OH
TIM GADSBY, STONEBORO, PA

THANK YOU FOR YOUR SUPPORT!!!!



THE
CONTINENTAL
DORSET CLUB, INC

Debra Hopkins, Secretary
P.O. Box 506
North Scituate, RI 02857-0506