



# The DORSET Connection

A Publication Of The Continental Dorset Club

Volume 10 Issue 2

Spring/Summer 2008

The 2008 National Polled Dorset and Horned Dorset sale will be held this year in conjunction with the Midwest Stud Ram Sale at the Missouri State Fairgrounds in Sedalia, Missouri. Dates for the actual sale events are June 25-27, 2008. The Polled Dorset Breeding Sheep, Horned Dorset Breeding Sheep, and the Dorset Wether Sires and Dams will all be included in this national event as the wether breeding stock is registered at this sale.

Following is a schedule of all the National Sale activities:

**-Tuesday, June 24th, 1 PM-6 PM:** Breed Type Inspection for all Dorset entries

**-Wednesday, June 25th, 8 AM:** Polled & Horned Dorset Breeding Sheep Show judged by Kyle Thayer, Dorset Wether Sires and Dams at 5:00 PM following the Shropshires judged by Brad Gillmore.

**-Thursday, June 26th, 8 AM:** CDC Board of Directors Meeting

**-Friday, June 27th 8 AM:** CDC Annual Membership Meeting & Breakfast, Youth Building, Missouri State Fairgrounds

**-Friday, June 27th about 4:30 PM:** Dorset Breeding Sheep then Wether Sire and Dam Sale

The Continental Dorset Club will once again be doing the Dorset Breed Type Inspections prior to the sale show as this is the National Dorset Sale. It should be noted that all Dorset sheep will need to be on the grounds Tuesday afternoon to be inspected. A consignor letter will be mailed out prior to the sale outlying all details. A big thank-you in advance to Dorset consignors for your cooperation. Measurements on yearlings will once again be taken. This will be the third data collection and as in the past the results will be reported in the following "Dorset Connection". It will be interesting to see the measurements as this will be a different time frame from the first two data collections.

During the sale show there will be classes in the breeding sheep show for Best Headed Dorsets. Ewephoric Dorsets, Shaftner, California has generously donated these awards for the National Dorset Sale. Polled and Horned Dorset Rams and Ewes will be picked for these prestigious honors.

The National Junior Dorset Association will be holding a major fund raiser for their scholarship program during the National Sale. Gift Baskets will be offered through a silent auction activity during the week. The NJDA directors are



looking for donations for this event. Baskets may be delivered Wednesday morning in the Swine Barn to the show ring. Regional or State Baskets will be greatly appreciated. The NJDA Association offers up to two \$1000 college scholarships each year and need to assist the maintenance of this fund. Also, there will be 1 % deducted from the Dorset sales that will also go into this fund. Thank-you in advance for support for this very worthwhile cause. Please contact NJDA President Natalie Harmeyer phone (405) 338-8692, [email:nharmeyer@okstate.edu](mailto:nharmeyer@okstate.edu) or any other NJDA director.

The Continental Dorset Club Annual Meeting and Breakfast will be held Friday, June 27, 2008 at 8:00 AM in the Youth Building (same building as last time) Missouri State Fairgrounds. No reservations are needed, come as you are. The Missouri Dorset Breeders Association will be hosting the event for the Dorset Breeders and breakfast will be compliments of them. Thank-you to the Missouri Dorset Breeders for doing this for the annual meeting, which will be held immediately following breakfast. Please make plans to be on hand for this event!

On sale day, at the beginning of the Polled Dorset Ewe Lamb sale, a donated ewe lamb from Peters Polled Dorsets, Nevada, Texas will be auctioned off. All the proceeds from the sale of this ewe lamb will be going towards the Great Plains Regional Junior Dorset Show that will be held at the Tulsa State Fair in Tulsa, OK in late September. Thank-you in advance for your bidding support on this ewe lamb.

The National Sale is a designated futurity sale and there should be a lot of quality ewe lambs nominated for the program for junior buyers to look over. Please remember as consignors to nominate your ewe lambs, and as buyers to get your lambs tattooed before you leave the fairgrounds. All the regional junior shows are to held after this sale to enable the juniors the opportunity to attend the maximum numbers of shows for point gathering.

Sale headquarters is the Comfort Inn, Marshall, MO (30 miles north of Sedalia as no room blocks were available in Sedalia direct). The rate will be \$65.00 for 2 adults and \$5.00 additional per person above that for a two queen bed, non-smoking room. To make reservations call them at (660)886-8080 and tell them the block name of "Continental Dorset Club". Reservations must be made by June 2.

# RIVERWOOD FARMS:

## Where Stud Rams Are Born!!

[ All rams listed have been Champions, sired Champions,  
...or High Sellers at top shows and sales! ]

**"Affirm" RF 3059**  
• Haven Point Dorsets

**"Wooden Pickle" RF 3684**  
• Penn State University

**"New Ears" RF 4274**  
• Turtle Mead Dorsets

**"Park Place" RF 4496**  
• Sugarloaf Dorsets

**"Primo" RF 4684**  
• Olivia Waggoner



**"High Definition" RF 3935**  
• Twin Oaks Dorsets

**"Brutus" RF 4248**  
• Lein Dorsets

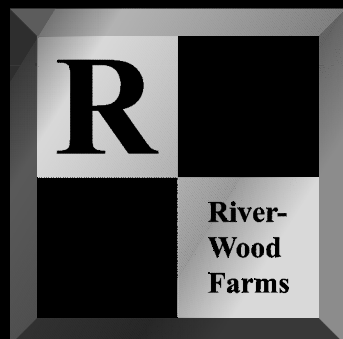
**RF 4273**  
**2006 National Sale**  
**Champion Ram**  
• Maple Hollow  
• Olivia Waggoner

**"Incision" RF 4259**  
• Reynolds Stock Farm  
• Spilde Dorsets  
• Kristina Repasky  
• Cedar Lane Dorsets

*Thanks to All  
Our Ohio &  
Illini Sale  
Buyers!*

**RF 4777 RR "MAIN EVENT"**  
High Selling Ram for \$7,000 at the 2008 Ohio Dorset Sale.  
Sold to Mithoefer Dorsets & Stony Point Ranch Dorsets.

*Watch  
For Our  
National Sale  
Consignment!*



**RIVERWOOD FARMS**  
NSFCP Member  
Since 1994  
Dorsets • Dorpers • White Dorpers



ERIC BRUNS, Shepherd • Cell: 614/430-1436  
TOM HENRY, Farm Manager      DAVE HARMANN, Associate

**JAMES KLINGBEIL**  
Owner  
1000 West Powell Rd.  
Powell, Ohio 43065

Barn: 614/885-6268  
Fax: 614/885-2851  
riverwood\_farms@msn.com  
www.riverwoodfarms.com

# TABLE OF CONTENTS

## Cover:

2008 National Polled & Horned Dorset Sale.....1

Table of Contents, Advertisers & CDC Directors.....3

Dorset Calendar & Promotional Items.....4

Advertising Rates.....6

President's Letter & Director Election Results.....6

## Feature Articles

Ohio Dorset Sale Successful, Once Again.....8

## Commercial Dorset Connection

Ewe Longevity & Culling Rate Affects Profitability.....10

Production Committee Minutes.....11

## Announcements:

2008 National Dorset Show Dates Announced.....12

Dorset Breeder Excellence Program Reminder.....12

Utilize On-Line Registration Program.....12

2008 Ohio Scholarship Winners.....12

## Youth News:

2008 All-American Junior Show in Sedalia.....14

2008 Regional Junior Show Sites.....14

Regional Junior Show Eligibility Requirements.....16

Scholarship Application Available On-Line.....16

Dorset Ewe Lamb Futurity Update.....16

All-American Junior Show Raffle Tickets Available.....16

## Spring Dorset Sales Results:

Ohio Dorset Sale.....18-20,22,24

Illinois Dorset Sale.....24, 26-27

Ohio Photo Gallery.....28

All-American Junior Show Entry Form.....30

## NEWS WORTHY ITEMS WANTED

If you have any Dorset related news items of interest please send them to the Continental Dorset Club Office.

We need your important input to keep this newsletter up to the caliber that it has become and hopefully will remain to be.

# Advertisers

Riverwood Farms.....2	Southfield Corporation.....20
Lauden Acres.....5	Bel-Mar Farm.....21
Peters Polled Dorsets.....7	Ewephoric Horned Dorsets.....22
5D Polled Dorsets.....9	Schwartz Horned Dorsets.....23
Ankeny Farms.....11	Two Willow Ranch.....25
Reynolds Stock Farm.....12	Good-Ewe Dorsets.....26
Twin Oaks Dorsets.....13	Klampe Polled Dorsets.....27
Troy Longenecker.....15	California Dorset Breeders.....29
Royal S Graphics.....16	Superior Farms.....31
Cassell Horned Dorsets.....17	Midwest Sale.....32
Pine Ridge Dorsets.....19	

## CONTINENTAL CLUB BOARD OF DIRECTORS 2007-2008

### President - Melanie Barkley

#### Eastern Director

9027 Hyndman Rd.

Manns Choice, PA 15550

Phone: (814)623-5756

### Vice President - Larry Hunter

#### North Central Director

135 E. Broadway

Roseville, IL 61473

Phone: (309)426-2465

### Great Plains Director

#### Tom Diel

2223 E 104th St.

Perkins, OK 74059

Phone: (405)880-7485

### Great Lakes Director

#### Mike Galleher

6000 CR 100

Mt. Gilead, OH 43338

Phone: (419)946-4582

### Western Director

#### John Monahan

4324 Spring Hill Rd

Petaluma, CA 94952

Phone: (707)778-7593

### New England Director

#### Frank Tiffany

117 Tiffany Rd.

Norwich, NY 13815

Phone: (607)336-7622

### Executive Secretary/Treas.

#### Debra Hopkins

P.O. Box 506

N. Scituate, RI 02857-0506

Phone: (401)647-4676

Fax: (401)647-4679

E-mail: cdcdorset@cox.net

www.dorsets.homestead.com

*This publication is produced  
three times annually by the:*

**Continental Dorset Club, Inc.  
North Scituate, RI**

# DORSET CALENDAR

- May 23-24, 2008:** National Cornbelt Show & Sale, Iowa State Fairgrounds, Des Moines, IA. Contact Sheep Breeder Sale Management Service (573)442-8257
- May 24-25, 2008:** Great Lakes Sale, Wayne County Fairgrounds, Wooster, OH. Contact: Banner Sale Management Service (309)785-5058 or visit website: [www.bannersheepmagazine.com](http://www.bannersheepmagazine.com)
- May 29-31, 2008:** Nugget All-American Sale, John Ascuaga Casino, Sparks, NV. Contact: Banner Sale Management Service (309)785-5058 or visit website: [www.bannersheepmagazine.com](http://www.bannersheepmagazine.com)
- May 30-31, 2008:** West Virginia Purebred Sheep Sale, Petersburg, WV. Contact: Sandra Smith (304)257-4372.
- June 1, 2008: ENTRY DEADLINE** for All-American Junior Show, featuring classes for both Polled & Horned Dorsets, Missouri State Fairgrounds, Sedalia, MO. Contact: CDC Office (401)647-4676
- June 23-27, 2008:** Midwest Stud Ram Sale featuring the National Polled & Horned Dorset Sales, Missouri State Fairgrounds, Sedalia, MO. **ALL** Dorset Sheep show Wednesday June 25 and sell Friday June 27. Contact: Sheep Breeder Sale Management Service (573)442-8257
- June 26, 2008:** Annual CDC Board Meeting, 8:00 AM-Noon, Sedalia, MO
- June 27, 2008:** Annual CDC Membership Meeting and Breakfast, 8:00 AM, Youth Building, Missouri State Fairgrounds, Sedalia, MO. Breakfast sponsored by the Missouri Dorset Breeders Association.
- July 4-6, 2008:** All-American Junior Sheep Show, Missouri State Fairgrounds, Sedalia, MO. Contact CDC Office (401)647-4676, email: [cdcdorset@cox.net](mailto:cdcdorset@cox.net)
- July 18-19, 2008:** New England Sale, BIG E Fairgrounds, West Springfield, MA. For entry information contact: Becky Peterson (413)624-5562 or visit website: [www.nesheep.org](http://www.nesheep.org)
- July 18-20, 2008:** New England Regional Junior Dorset Show, Northeast Youth Sheep Show, BIG E Fairgrounds, West Springfield, MA. Featuring classes for both Polled & Horned Dorsets. Contact: Polled: Pat Poitras (413)283-9852, Horned: Kelly Wright (603)357-5608 or visit website: [www.nesheep.org](http://www.nesheep.org)
- August 6, 2007:** Great Lakes Regional Junior Dorset Show, Ohio State Fair, Columbus, OH. Polled and Horned classes offered. Contact: Pat Myers (937)468-2035
- August 15, 2008: ADVERTISING & INFORMATION DEADLINE** for the Fall 2008 Issue of "The Dorset Connection". Contact: CDC Office (401)647-4676, e-mail: [cdcdorset@cox.net](mailto:cdcdorset@cox.net)
- August 15, 2008:** Western Regional Junior Dorset Show, California State Fair, Sacramento, CA. Contact: California State Fair web site: [www.bigfun.org](http://www.bigfun.org)
- September 28, 2008:** Great Plains Junior Regional Dorset Show, Tulsa State Fairgrounds, Tulsa, OK. Contact CDC Great Plains Director Tom Diel (405)547-2044.
- October 11, 2008:** Eastern Regional Junior Dorset Show, Delaware Junior Livestock Exposition, Delaware State Fairgrounds, Harrington, DE. Polled & Horned classes offered. Contact: Coulton Passwaters (302)337-3229, e-mail: [cpasswaters@msn.com](mailto:cpasswaters@msn.com) or Melanie Barkley (814)623-5756.
- Saturday, November 15, 2008:** Junior Market Lamb Show, N.A.I.L.E., Louisville, KY. Contact for entry information N.A.I.L.E (502)595-3166 or web site: [www.kyfairexpo.org](http://www.kyfairexpo.org)
- Saturday, November 15, 2008:** National Junior Dorset Association Annual Meeting & Pizza Party, North American International Show Complex, Louisville, KY. Contact CDC Office (401)647-4676.
- Sunday, November 16, 2008:** National Polled Junior Dorset Show and National Horned Dorset Junior Show, N.A.I.L.E., Louisville, KY. Contact for entry information N.A.I.L.E (502)595-3166 or web site: [www.kyfairexpo.org](http://www.kyfairexpo.org)
- Monday, November 17, 2008:** National Horned Open Show and National Polled Open Show, N.A.I.L.E., Louisville, KY. Contact for entry information N.A.I.L.E. (502)595-3166 or web site: [www.kyfairexpo.org](http://www.kyfairexpo.org)

## DORSET PROMOTIONAL ITEMS AVAILABLE

- Dorset Baseball Caps:** Cotton twill available with either a embroidered Polled Ram Head or Horned Ram Head. Horned hat colors: Maroon with khaki bill or Forest Green with khaki bill. Polled hat colors: Sage Green or Chocolate Brown. **Cost is \$15.00 which includes shipping & handling.**
- History Book of The Continental Dorset Club & The Dorset Sheep:** This book is 186 pages containing over 300 photos of Dorsets and those who have led the breed. **Cost is \$15.00 includes shipping & handling.**
- Registration Paper Three Ring Binder:** An 11" x 8 1/2" green vinyl covered 1" wide three ring binder with 10 sheet separators to get you started! CDC logo on front cover. Holds up to 100 sheets. **Cost is \$10.00 includes S & H.**
- Ram Head Decals:** Polled or Horned ram head available in two sizes. Large 12" diameter and small 6" diameter. **Cost is \$6.00 for the large decal and \$4.00 for the small decal.**
- Magnetic Bumper Sticker** featuring the CDC Logo and the phrase: "The Breed for all Seasons....The Breed for all Reasons". **Cost is \$2.00 each.**

**SEND YOUR PAYMENT TO: CDC, P.O. Box 506, N.Scituate, RI 02857**



# LAUDEN ACRES

**COMMITTED TO EXCELLENCE**



## **Polled Dorset Fall Ewe Lambs at Lauden Acres**

This impressive group of fall lambs includes some of the individuals consigned to the 2008 sales and keeper females retained for Lauden Acres.

*See Our Entries At The 2008...  
**MIDWEST STUD RAM SALE***



**LA 576 – Sold for \$4,000**

***Special  
Thanks To...***  
Olivia Waggoner  
of Pennsylvania  
for purchasing  
these outstanding  
“Best Bet”  
daughters at the  
2008 Ohio Dorset  
Show & Sale.

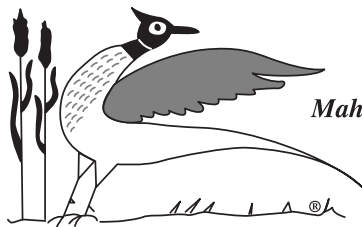


**LA 567 – Sold for \$3,750**

**Stop By And Visit Us — Sheep For Sale At All Times!**

# LAUDEN ACRES

**Flock Consultant  
Timothy M. Hall**  
HC 68 Box 80 A  
Dalmatia, PA 17017-9633  
570/556-6381 (Cell)



*Division of  
Mahantongo Game Farms  
Established 1935*

**Flock Consultant  
Dick Kuzemchak**  
289 South Main Street  
Pleasant Gap, PA 16823  
814/359-3048 (Home)

Lynn A. Laudenslager • 570/758-6284 (Office) • 570/847-9817 (Cell)



## LETTER FROM CDC PRESIDENT MELANIE BARKLEY

### Greetings!

It is so nice to see the grass growing and have the sheep out on pasture again. It's just downright peaceful to take a few moments to watch them graze. On the other hand, I truly enjoy watching the lambs bouncing around in the fields as they run off their excess energy.

One thing I don't find peaceful and that concerns me is the rising cost of fuel in particular and everything else in general. I can remember back when my husband and I first got married. I drove a small car with two seats and a hatchback. A friend even went so far as to call it a mechanized cockroach. We took a trip out to Eaton, Ohio in this car to buy a ram. Gas was 75 cents a gallon and this car got 53 miles to the gallon on the way out and back. It cost us a whopping \$5.00

for gas for that trip! The trip this year in a truck was closer to \$400 for fuel.

I think this gives us some things to think about in the sheep industry. What changes are we able to institute to maintain the profitability of our operations? For some of us, that might mean cutting back on grain feeding. For others it might mean running a soil test more often to maintain soil fertility in our pastures in order to maximize pasture production. It could even mean increasing the flock size.

The market is still strong for lambs and cull ewes. (When I got married we sold cull ewes for \$20 and sell them now for \$75 and up.) So even with the economic challenges, I think the future looks bright for Dorset producers. We have a very marketable sheep that can raise lambs on pasture, breed out of season to capture different lamb markets, and are easy keepers that will last for many years in the flock.

Have a great summer! I hope to see you in Sedalia for the national sale in June!

*Melanie Barkley*

### CDC SPRING DIRECTOR ELECTION RESULTS

This past February the Eastern and North Central Regions held CDC Director elections. In both regions, the incumbents were re-elected. Both Melanie Barkley and Larry Hunter were re-elected to their second three-year term on the CDC board of directors. Congratulations to them both.

The CDC would also like to thank Bill Keough, WI and John "Speedy" Fought, PA for also running for these directorships. Thank-you for your interest and taking time to run for the CDC Board of Directors.

## The DORSET Connection

### ADVERTISING RATES

Published three times per year by the Continental Dorset Club, Inc.

### Ad Deadlines

**Spring/Summer Issue:** Ad copy and materials due April 1st (May 15th mailing date)

**Fall Issue:** Ad copy and materials due August 15th (October 1st mailing date)

**Winter Issue:** Ad copy and materials due December 1st (January 15th mailing date)

### Payment

Payment for all advertising due at time of ad placement. Additional costs for extra artwork or special effects will be billed later. Add \$15 for each photo. **No Proof Pictures Accepted – Only Prints or Digital Photos (high resolution).** No discounts on photos. Print-ready ads submitted on CD (Mac formatted) or sent via e-mail are accepted and will receive a 15% discount from listed base prices.

### Contracts

Advertising contracts are also available. Advertisers will receive an additional 10% discount for yearly contracts. Ads must be placed in three consecutive issues and paid in full at the time the first ad is placed. No limitation on ad size.

**NOTE:** The Continental Dorset Club, Inc. reserves the right to reject any advertising or copy that may be objectionable.

Send all advertising materials to:

**DALE SMITH**

Advertising Editor/Designer

17917 Brim Road • Bowling Green, Ohio 43402

Phone: 419/352-2332 Fax: 419/352-2332 E-mail: royal-s@earthlink.net

### Ad Dimensions & Base Prices

	2 Page Ad 16" x 9-7/8" <b>\$440</b>
--	---

1 Page Ad 7-1/2" x 9-7/8" <b>\$275</b>	1/2 Page Ad 7-1/2" x 4-15/16" (Horizontal) or 4-7/8" x 7-1/2" (Vertical) <b>\$165</b>
--	---

1/4 Page Ad 4-7/8" x 3-3/4" <b>\$100</b>	Bus. Card Ad 3-1/2" x 2" <b>\$50 - 1 Time</b> <b>\$135 - 3 Times</b>
--	---

**AD PROOFS:** Initial and final proofs are guaranteed to advertisers who send in ad copy and materials by the deadlines noted. Advertising copy received after deadlines will be included on a first come, first serve basis, time and space permitting.

# Peters Polled Dorsets

*"Raising Quality Dorsets for Tomorrow's Industry"*

**WE BUY, SELL & TRADE SOME PRETTY NICE SHEEP!**

## "Winston" Daughter



### Superior Farms 7098

Reserve Junior Champion Ewe at the 2007 NAILE Junior Show; 2008 Houston Stock Show Champion in Open and Junior Shows. Thanks Evan Snyder for your help.

## "Cowboy" Daughter



### Peters Polled Dorsets #24

Reserve Supreme Champion Ewe 2008 San Antonio Stock Show for Haley Fisher, Venus, TX. Thanks Haley, for your trust in our Dorsets and congratulations!

## "Spot Free" Son



### Millennium Farms 0232

A.K.A. "Cowboy" went to Indiana with Chris & Dawn and family to breed their ewes. Watch for their lambs and ours at the National Dorset Sale in Sedalia.

**HEADING TO SEDALIA WITH A STRONG CONSIGNMENT**  
Here Are Some Examples...

## "Cowboy" Daughter



### Peters Polled Dorsets #68

D.O.B. 12/07 – Sells at Sedalia!  
She's a full sister to last year's Reserve Champion Ram at Sedalia that sold to Bradford Farms and Shady Hill Farms.

## "Lil Boy" Daughter



### Peters Polled Dorsets #43

D.O.B. 3/3/07 – Sells at Sedalia!  
Shown once at Houston where she was 1st Place Ewe Lamb. Sired by our Ram & Ewe Farm stud "Lil Boy" (a "Corona" son).

## "Golddigger" Son



### Peters Polled Dorsets #35

D.O.B. 11/1/06 – Sells at Sedalia!  
2008 Reserve Champion Ram at Houston behind our Supreme Ram (Haven Point 0716). A "Golddigger" son with Saylor's "Upper Deck" on top and bottom sides...He's "RR". We have used him and so will you!!

**STOP BY OUR PENS... YOU'LL LIKE WHAT YOU SEE!**

*Farm Visits Always Welcome*

**Kristen Peters • 19971 Fm 2755 • Royse City, TX 75189**

**Home: 972/843-5002 • Paul's Cell: 469/338-1730 • Noel's Cell: 615/218-6952**



## FEATURE ARTICLE

### OHIO DORSET SALE SUCCESSFUL, ONCE AGAIN

The 2008 Ohio Dorset Sale was held Easter weekend during one of the most stressful economic times we have suffered through in quite sometime with record high fuel prices, and guess what? The Dorset breed and its breeders have showed not only resilience but broke some breed records once again!

The Horned Dorset portion of the sale had a record sale average of \$668.75 on 50 head sold, and a new high selling ram price was established. The Champion Yearling Ram consigned by Cassell Horned Dorsets of Wytheville, VA sold for \$3100 to Thomas J. Walsh, North Berwick, ME. Congratulations to both!

The Polled Dorset part of the sale had a very respectable \$1084.72 on 221 head sold. This is the third highest average in the Ohio Sale history. The quality of the females offered was one of the best in recent years and the females were the stars of the sale. The high quality rams also sold well but the market for average rams was lacking but this has been the trend in the purebred sheep industry in recent years. A complete sales result with more photos are on pages 18-24 of this newsletter.

The enthusiasm for the Dorset breed remains strong as evidenced not only by the sale itself but by the successful fundraising events for the Great Lakes Regional Junior Show and the All-American Junior Show. Thanks to your support, both of these events will be well funded once again for our juniors. The Futurity also got off to a great start thanks to the consignor support by nominating their ewe lambs entries. Several lambs were bought by juniors and were tattooed for program participation.

Things started off well for the Dorset breed in 2008 at Ohio and looking forward to it continuing throughout the year!!



**Grand Champion Horned Dorset Ram - Spring Yearling Ram**  
Consigned by Cassell Horned Dorsets, Wytheville, VA  
Sold to Thomas J. Walsh, North Berwick, ME



**Grand Champion Polled Dorset Ram - Early Fall Lamb**  
Consigned by Spilde Dorsets, Stoughton, WI  
Sold to Mithoefer Dorsets, Lafayette, IN



**Grand Champion Horned Dorset Ewe - Spring Yearling Ewe**  
Consigned by Cassell Horned Dorsets, Wytheville, VA  
Sold to Heather & Christina Shotts, Quincy, OH



**Grand Champion Polled Dorset Ewe - Spring Yearling Ewe**  
Consigned by Haven Point Dorsets, Volant, PA  
Sold to John Passwaters, Bridgeville, DE



## 5 D Polled Dorsets

ASSERT (left) was purchased after the 2005 NAILE where he was Res Grand Champion as a lamb for Riverwood Farms. He has made an impact on our ewes which were sired by PingEyeTwo. Due to my job situation, I have cut back on the flock and will downsize some more this spring. Last summer we purchased a RR ram lamb from Aaron Crome named AC. We have decided to offer ASSERT for sale. If you need length, correctness and outstanding breed character, give me a call. ASSERT can make a change for you.



"ASSERT"  
Riverwood Farms 4186



"AC"  
Crome Dorsets 2882

Above and below are some quality ASSERT lambs that will be at the National Sale in Sedalia in June.



5D Polled Dorsets  
Tom Diel  
405-880-7485 or [realdiel@provalue.net](mailto:realdiel@provalue.net)

*See ya at the National Dorset Sale  
at Sedalia in June.*

# DORSET COMMERCIAL CONNECTION

## EWES LONGEVITY AND CULLING RATE CAN HAVE A MAJOR IMPACT ON PROFITABILITY

by Melanie Barkley, Extension Educator

There are many things that can affect the profitability of a sheep operation and one of those is ewe longevity as it relates to culling rate. As the culling rate increases, the average age of the ewes in a flock will decrease. Not only does that affect the number of lambs an operation has to sell the following year, but it will also decrease the number of lambs for several years because young ewes added to the flock are more likely to produce singles as compared to mature ewes.

Genetic predictors for ewe longevity will relate back to the goals you have for your operation and what you expect from your ewes. Producers should select rams carefully so as to pass along certain genetic traits to replacement females. Some of those traits that are likely part of the decision making process for culling may include milk production, lambing percentage, growth rate and even structural correctness.

The best predictors that we have are performance records that make comparisons across a breed. These expected progeny differences or EPD's can give us a better idea of how a ram's female progeny are likely to perform. We know this isn't always a perfect system because sheep are raised under differing environmental and management conditions. However, data such as that produced by the NSIP (National Sheep Improvement Program) certainly can be very useful in many situations.

As an example, let's take a look at how the gross revenue from an operation's lamb sales is affected under different culling rates. Let's assume this flock has 50 ewes and their lambing percentage is 165%. Using this information we should have 83 lambs to wean the first year from this flock. In the table below we can see the difference it makes on your revenue when the culling rate is varied from 10% to 20% to 30%.

Year One						
# Ewes	Culling Rate	<u>lambs produced</u>	<u># lambs saved for replacement</u>	<u># lambs to sell</u>	<u>Potential Revenue</u>	
					<u>60 lb lambs at \$1.40/lb</u>	<u>120 lb. lambs at \$1.00/lb</u>
50	10%	83	5	78	\$6552	\$9360
50	20%	83	10	73	\$6132	\$8760
50	30%	83	15	68	\$5172	\$8160
Year Two						
45	10%	74	4	70	\$5880	\$8400
40	20%	66	8	56	\$4704	\$6720
35	30%	58	10	48	\$4032	\$5760

As you can see, by the second year you no longer are a 50 ewe flock, you have dropped to 35 to 45 ewes depending on the culling rate the year before. In looking at the last two columns, you can see how much the revenue from the sale of lambs has dropped because of having to cull ewes. Obviously, you will have some income from the sale of those cull ewes, but the salvage value of those ewes is far less than what you would receive if those ewes had stayed in the flock and produced lambs the following year.

The value of lambs will vary a great deal across this country and across various months of the year. To get a better picture of your own situation, you can plug in your own market conditions to see where you stand with culling rates. Hopefully, your flock's culling rate is low so that you can maximize the performance of those ewe lambs that you raise for replacement females in the flock.

## **PRODUCTION COMMITTEE MINUTES - JANUARY 24, 2008**

A new Production Dorset committee met recently via conference call to discuss how to better promote production type Dorsets. Those participating on the committee were: Melanie Barkley, Jim Yeager, Alan Culham, Brad Smith, Kathy Soder, Dave Notter, and Jeff Hunter.

The committee looked at ways to better promote the production type Dorsets and methods for marketing this type of sheep. The committee discussed the need to focus promotion on certain aspects related to Dorsets. These aspects include high milk production, out of season breeding, easy care, lamb early, twinning, and longevity in both ewes and rams.

The committee felt it was important to stress these traits and to point out that Dorsets can survive on their own, produce twins, milk efficiently and wean off lambs that are ready to go to market. It was also mentioned that buyers don't necessarily want papers for their sheep.

One thought on advertising would be to have 6 to 10 production breeders go together to support one large ad that would promote the traits mentioned above. In that ad producers might make the claim that "We ask our production Dorsets to X, Y and Z. The ad would then give the breeder information. "If you want this kind of sheep, come see us. Here's why."

Some marketing methods mentioned at the meeting were use of the CDC website and print advertising. Any marketing should feature the benefits of production Dorsets, including fast growth rate. Two ideas for marketing might stress Dorset rams used for crossbreeding would settle more ewes quickly, even in hot conditions. Another idea would be to stress that Dorset ewes will maintain their body condition and produce lambs efficiently in a crossbreeding program.

The Production producers could use tools like NSIP to document traits that production Dorset producers are looking for. A goal of marketing would be to pool together a number of rams or ewes for sale to large operations. These sheep would need to produce lambs that would finish out at 130 to 140 pound weights. EPD's would help to validate the type of sheep that a producer is looking to buy. Producers might also want to include loin eye measurements with the information.

Many production breeders have developed their own markets. It was mentioned that there are a number of major ram marketers in Utah and that the Association might work with them to market loads of rams from one another part of the country.

Another idea mentioned was to market Production Dorsets as the "White-Faced Meat Breed" and the fact that Dorsets are a dual purpose breed. The committee was looking for something catchy. Maybe "Maternal Meat Breed" might work.

The committee felt it would be useful to designate an issue of the Dorset Connection to production type dorsets. The issue could include a large amount of production information, the NSIP notebook, NSIP Sire Summary, and NSIP sign up information. The committee suggested the early fall edition of the Dorset Connection for this purpose.

If other production type Dorset breeders have suggestions on how to promote this type of sheep, contact any of the committee members to offer your suggestions.

# **"Traditional Dorsets W/Tradition"**

## **For Sale:**

- 2007 Fall Ram and Ewe Lambs
- 2008 Winter Rams and Ewe Lambs
- Yearling Rams
- Yearling Ewes

Ask for our DVD on the sheep for sale

# **Ankeny Acres**

Nampa, Idaho • 1-208-463-0627 • [Ankenyacres@Clearwire.net](mailto:Ankenyacres@Clearwire.net)



## ANNOUNCEMENTS

### 2008 NATIONAL DORSET SHOW DATES IN LOUISVILLE ANNOUNCED

The 2008 National Open Dorset Shows held in conjunction with the North American International Livestock Exposition in Louisville, KY will be held Monday, November 17, 2008. This year the Horned Dorsets will be showing first starting at 8:00 AM followed by the Polled Dorsets. Jeremy Etzler, South Solon, OH has been asked to judge the Polled Show and Larry Mrozinski, Pierre, IN to judge the Horned Show. NAILE was waiting judges confirmation when this newsletter was sent to press.

The National Junior Dorset Show will be held on Sunday, November 16, 2008 and the Junior Dorset Wethers will be judged on Saturday, November 15th. Judges have yet to be confirmed for these shows as the new person in the breeding sheep show rotation will be judging the Dorsets. Since the Open Show follows directly on Monday, it might be a great time for junior Dorset exhibitors to take advantage to participate and enjoy all the Dorset events at Louisville.

The breed standard inspections will take place on Saturday, November 15th for all Dorset breeding sheep. Don't forget that the inspections have been expanded to note the serious defects and highly objectionable traits so it may take a bit longer than it did in the past but the inspection committee will be as efficient as possible. Thank-you in advance for your assistance and cooperation.

### DON'T FORGET TO MAKE PLANS TO ENTER THE NEW DORSET BREEDER EXCELLENCE PROGRAM

The 2008 Dorset Breeder Program has been finalized and officially approved by the CDC. The CDC strongly encourages breeders to take a good look at this program as it is a great avenue to highlight the very best of the Dorset breed. The CDC is very proud of their members and looks forward to being able to recognize breeders via this new program for all their well deserved efforts. Cash prizes, merchandise and free publicity will be made available to our selected winners. All the program details are now available on

our website: [www.dorsets.homestead.com](http://www.dorsets.homestead.com). To enter you will need to provide the cover sheet, photos and fill out the questionnaire. The cover sheet and questionnaire are available to print off our website or you can contact the CDC Office and we will be happy to mail the application to you for all of our non-computer people.

The entry deadline is December 31, 2008 and the CDC is looking forward to receiving all your great applications!

### UTILIZE ON-LINE REGISTRATION TO MINIMIZE TIME

With the rush registration time upon us, please check out the process of registering your sheep on line at our website: [www.dorsets.homestead.com](http://www.dorsets.homestead.com)

When you fill out the form and submit it online, the office retrieves forms every working day. Once the work is processed you will receive an e-mail from us verifying the work and informing you of



The 2008 Ohio Dorset Association Scholarship Winners (L to R) Kaycee Smith, Mt. Gilead, OH; Micaela Nauman, Fredrickstown, OH; Cameron Saylor, Belle Center, OH; Nicholas Wood, Belle Center, OH; Sean Beskid, Byesville, OH. Congratulations to all the recipients!

the exact amount due. The work will be mailed out upon receipt of payment in the office. If you would like to speed up the process, you can put money on your account ahead of time to eliminate any time wait. It should be noted that the CDC does not accept credit card payment, as the CDC does not do enough volume of business to maintain low rates.

So, when you are getting ready to register your sheep, check out the online registration process!

## Look For Our Entries At Reno!

*We Have a Great Set of Fall Ewe Lambs Sired By: "Titan", "Cartel" and "Maximus"*

Looking forward to our 2008 fall crop. Lambs will be sired by "Incision" Riverwood 4259, the 2007 Sire of the Year and sire of the High Selling Ram at the 2008 Ohio Dorset Sale; or "Rumble" Penn State 5141, sire of the Grand Champion Ram and second High Selling Ram at the 2008 Ohio Dorset Sale.



# REYNOLDS STOCK FARM

*One of the Premier Dorset Flocks in the United States*

### The Reynolds & Wopat Families

9119 Stayton Road SE • Aumsville, OR 97325  
Phone: 503/769-5112 • E-mail: [rsf@wvi.com](mailto:rsf@wvi.com)

Check out our website:  
[reynoldsstockfarm.com](http://reynoldsstockfarm.com)

# Starting The Year Strong At The Sales!



Reserve Grand Champion Ram, Ohio Dorset Sale sold to Smith Sheep Company, IL.

## THANKS!

A sincere thanks to all our buyers and to everyone who bid on our sheep at the Ohio and Illini Sales including the following ewe lamb buyers... Sean Beskid, OH; Sidney DeVries, IL; Daniels Family, IL; Kevin Laffavor, MO; Olivia Lough, IN and Kassidy Olinger, IN who also purchased a fall ram lamb privately at the farm.



Grand Champion Ram, Illinois Dorset Sale sold to Daniels Family, IL.



Third Place Class 1 Early Fall Ram Lamb at Ohio sold to Sugarloaf Dorsets, MN.

**Our 10 Head at Ohio  
Averaged \$2,260!**

**Our 4 Head at Illinois  
Averaged \$1,750!**

**“HIGH DEFINITION”  
Is Heading West!**

“HD” has been sold to Freitas/Bianchi Dorsets, CA and Mona Lisa Pettersson, WA. Congratulations to these two programs.



Fourth Place Class 1 Early Fall Ram Lamb at Ohio sold to Jim Driscoll, Ontario, Canada.



Fifth Place Class 2 Early Fall Ram Lamb at Ohio sold to Olivia Waggoner, PA.

**We’re Consigning 6 Head To  
The National Dorset Sale...**

Our Sedalia consignment consists of a RR Winter ram lamb, a RR Spring ram lamb and four show ewe lambs...two Fall ewe lambs, one Winter ewe lamb and one Spring ewe lamb. Five of the six are sired by “High Definition”.



First Place Class 2 Fall Yearling Ewe at Ohio sold to Mona Lisa Pettersson, WA.

**THE GARY SAYLOR FAMILY**

**937/464-7214**

Gary • Becky • Cameron • Kelsey • Cole  
19570 County Road 75 • Belle Center, Ohio 43310  
e-mail: gsaylor@watchtv.net

*“A Driving Force in the Dorset Breed”*



**TWIN OAKS  
DORSETS**





## YOUTH NEWS

### 2008 ALL-AMERICAN JUNIOR SHOW SEDALIA, MISSOURI

The 2008 All-American Junior Show has been set for July 4th-6th at the Missouri State Fair Swine Barn in Sedalia, Missouri. Dorset breeding sheep and market lambs will be shown Sunday, July 6th. The Horned Dorset breeding classes will be first followed by the Polled Dorsets.

Following is a schedule of the 2008 events:

#### Friday, July 4th:

8:30 AM - Announcements  
9:00 AM - Check In Papers & Receive Information Packets  
9:00 AM - Skill-a-thon open to contestants  
10:00 AM - Judging Contest Begins and Market Lambs Weighed & Classified  
12:00 PM - All-American Lamb Camp: 1st session  
1:30 PM - Pick-up Exhibitor T-Shirt  
2:15 PM - Opening Announcements & Group Photo  
2:30 PM - Showmanship Classes  
3:00 PM - Skill-a-thon closes for the day  
6:30 PM - 3-on-3 Basketball Tourney (pizza and drinks will be served)

#### Saturday, July 5th:

##### 8:00 AM - Ring One

-Columbia Breeding Sheep & Mkt Lambs  
-Cheviot Breeding Sheep & Mkt Lambs  
-Shropshire Breeding Sheep & Mkt Lambs  
-Natural Colored Breeding Sheep & Mkt Lambs  
-Shetland Breeding Sheep & Mkt Lambs

##### 8:00 AM - Ring Two

-Oxford Breeding Sheep & Mkt Lambs  
-Montadale Breeding Sheep & Mkt Lambs  
-Hampshire Breeding Sheep & Mkt Lambs  
-Lincoln Breeding Sheep & Mkt Lambs  
-Tunis Breeding Sheep & Mkt Lambs  
9:00 AM - Skill-a-thon opens to contestants

#### 11:00 AM National Junior Dorset Association Meeting & BBQ followed by breed type education program

1:00 PM All-American Lamb Camp - 2nd session  
3:00 PM - Skill-a-thon closes for the day  
7:00 PM Pool Party (sandwiches & drinks served)

#### Sunday, July 6th:

##### 8:00 AM - Ring One

-Southdown Breeding Sheep & Mkt Lambs

##### 8:00 AM - Ring Two

-Horned Dorset Breeding Sheep & Mkt  
-Polled Dorset Breeding Sheep & Mkt  
-Immediately Following - All-American Lamb Camp Graduation  
-Immediately Following - 3-on-3 Basketball

#### Final Game

-Closing Ceremonies - Announcements of awards and raffle drawing

-Sheep released after closing ceremonies

All exhibitors who showed in last year's All-American will be mailed a 2008 premium book. Entries also available at:

[www.allamericanjuniorshow.com](http://www.allamericanjuniorshow.com)

Entries close June 1st.

#### Accommodations:

#### Main Hotels with Special All-American Show Rates:

**-STATE FAIR BEST WESTERN - (660) 826-6100**

**-RAMADA INN - (660) 826-8400, give them conformation number P51786**

- Other area hotels:

**-SUPER 8 MOTEL - (660) 827-5890**

**-COMFORT INN - (660) 829-5050**

**-AMERICAN INN: (660) 826-2488**

**-BUDGET HOST SUPER 7: (660) 827-0215**

**Camper sites also available at the Missouri State Fairgrounds (660) 827-8150**

The CDC would like to thank Pine Ridge Dorsets-Waggoner Family, East Berlin, PA and the Cassell Family, Wytheville, VA for their recent donation of fall ewe lambs that were sold at the Ohio Dorset sale to help support the Dorset Shows at the 2008 All-American. **THANK-YOU** for their support and to all those that bid on the lambs.

Breeders also signed up to sponsor classes at the upcoming All-American. Thank-you also goes to the following class sponsors:

-Spilde Dorsets, Stoughton, WI; Mike & Wendy Van Wagner, Dauphin, PA; Crome Dorsets, Marshall, IL; Superior Farm, Yukon, OK; Cordray Dorsets, Belevidere, IL; Bianchi Sheep Ranches, Hollister, CA; Phantom Hills Fitting & Training, IL; Poynter Sheep Farm, Paris, IL; Smith Sheep Farm, Stewardson, IL; Freitas Family, Oakdale, CA; Paul & Nancy Wissinger, Sinking Springs, PA; Robert & Linda Highfield, Washington CH, OH; McDaniel Horned Dorsets, Arlington, IN; Patoka Valley Sheep, Princeton, IN; Cassell Horned Dorsets, Wytheville, VA; Lance Thompson, Carrollton, OH; Schwartz Horned Dorsets, Spencerville, OH; Joe Crill & Family, Rochester, IN; Galleher Farms, Mt. Gilead, OH; Warren Squires, Chesterville, OH and Frank Tiffany, Norwich, NY.

Thanks to all of you a total of \$1615 has been raised for the two shows this year! **The All-American Junior Show entry form can be found on page 30 of this newsletter. Fill it out today!**

### 2008 REGIONAL JUNIOR SHOWS

#### New England Regional Jr. Show July 18-20, 2008

*held in conjunction with the  
Northeast Youth Sheep Show*

BIG E Fairgrounds

**West Springfield, MA**

Entry information contact:

Polled: Pat Poitras (413)283-9852

Horned: Kelly Wright (603)357-5608

website: [nesheep.org](http://nesheep.org)

#### Great Lakes Regional Jr. Show August 6, 2008

*held in conjunction with the  
Ohio State Fair*

Ohio State Fairgrounds

**Columbus, Ohio**

Entry information contact:

Pat Myers (937)468-2035

e-mail: [smyers@loganrec.com](mailto:smyers@loganrec.com)

#### Western Regional Jr. Show August 15, 2008

*held in conjunction with the  
California State Fair*

**Sacramento, CA**

Entry information contact:

California State Fair (916)263-3149

web site: [www.bigfun.org](http://www.bigfun.org)

#### North Central Regional Jr. Show August 17, 2008

*held in conjunction with the  
Illinois State Fair*

Illinois State Fairgrounds

**Springfield, Illinois**

Entry information contact:

Larry Hunter (309)337-0380

website: <http://www.agr.state.il.us/isf>

#### Eastern Regional Jr. Show October 11, 2008

*held in conjunction with the  
Delaware Junior Livestock Exposition*

Delaware State Fairgrounds

**Harrington, DE**

Entry information contact:

Coulton Passwaters (302)337-3229

email: [cpasswaters@msn.com](mailto:cpasswaters@msn.com) or

Melanie Barkley (814)623-5756

#### Great Plains Regional Jr. Show September 28, 2008

*held in conjunction with the  
Tulsa State Fair*

**Tulsa, OK**

Entry information contact:

Tom Diel (405)547-2044

website: [www.tulsastatefair.com](http://www.tulsastatefair.com)





**"REBEL" BMF 1290**

*Watch for lambs out of this new outstanding Stud!*

Res. Champion '07 Ohio State Fair Junior Show, Res. Jr. Champion '07 Kentucky State Fair, and Champion Ram '08 PA Farm Show Jr. Show. This Ram only showed 3 times, and his record speaks for himself.

**"CHARITY" MYERS 6225**

Troy's '07 National Sale Purchase. This Fancy Ewe won The Eastern Region Futurity and Placed 3rd in the National Futurity. In New England 6225 won Best Headed and placed well in her classes all year.



**"SWEET 16" RIVERWOOD FARMS 4886**

Troy's selection of the 2008 Ohio Dorset Sale, and his 16th birthday present. This fancy ewe will add great genetics to his flock, and Troy invites you to visit him and his Dorset and Southdown Flocks at many County, State, Regional and National Shows in 2008.



**THANK YOU TO OUR PAST SUPPORTERS AND FITTERS FOR 5 YEARS**

Byron Waggoner Family PA  
Stephen Darhower PA  
Ben Bow PA  
Ruth Hartman PA  
Mike & Wendy VanWagner PA  
Mark & Deb Bell OH  
Craig Fleck & Jeff Repasky MN  
Ed Keeney & Sarah Doyle PA  
Ken Staver Family PA  
Lee Wagner PA  
Oberholtzer & Zimmerman Families PA

Speedy Fought PA  
Gary Kwisnek PA  
Kuykendall Family WI  
Annette Lovell PA  
Peterson Family MA  
Alanda Southdowns MA  
Dick Childs, WV  
MSB Suffolks, PA  
Rachel and Peggy Dey, NJ  
Rohrer and Kauffman Families, PA  
Riverwood Farms, OH



A Special **Thank you** to our Past Buyers for their support!  
I hope that our genetics are working well in your flock!

We recently have introduced a small Elite Flock of Southdowns!  
Dorset Reference Sire **"TAZMANIAC" VANBAIR 2543**

SPRING MILL FARM, Annville PA dealer of



**TAZ FARM**  
Troy Longenecker  
125 Heisey Road  
Annville, PA 17003  
717-867-1054

**TAZ FARM POLLED DORSETS**

## YOUTH NEWS, cont.

### REGIONAL JUNIOR SHOW ELIGIBILITY REQUIREMENTS

Following are the eligibility requirements for the Regional Junior Dorset Shows for your information:

1) Exhibitor must be a current member of the CDC whether in the youth enrollment program or as a lifetime member.

2) Exhibitor needs to be 21 years old or younger as of January 1st of the current year. There is no lower age limit but the exhibitor must be able to lead and/or control the head of his/her animal in the show ring.

3) Exhibitor must be present to show their own animals unless physically impaired. The junior owner will need to be at the head of the animal controlling it in the show ring, unless of course they have more than one entry in a class in which case another junior exhibitor showing their second animal is acceptable.

4) Sheep must be registered in the youth's name. Youth partnerships are acceptable except for futurity animals which must be in the individual youth owner's name ONLY. Farm names or "family" ownerships are not acceptable.

5) Exhibitor can show at an unlimited number of regional junior shows per year, the CDC does prefer they at least show at the regional show in which they reside if possible.

7) **EWES FUTURITY PROGRAM:** Your futurity ewe can earn double points at a regional junior show for the futurity ewe program. If you show at more than one regional show only your top point total will be doubled.

Regional junior shows are sometimes held in conjunction with existing shows so there definitely may be other show specific rules and regulations that apply. Please be aware of these additional requirements when making out your entries to these special shows.

### 2008 SCHOLARSHIP APPLICATION AVAILABLE ON-LINE

The National Junior Dorset Association annually presents up to two \$1000 scholarships. To qualify, a student must be completing at least half of his or her college or technical school studies the year in which the application is made or be enrolled in graduate school.

These awards are available to

current and previous members of the Continental Dorset Club Youth Enrollment Program or current lifetime members of the Continental Dorset Club. Applicants may be majoring or specializing in any type of field as these awards are not limited to agricultural majors.

The application must be post-marked **September 1, 2008**. Two letters of recommendation must be enclosed with the application. The individual completing the recommendation may return it to you in a sealed envelope, which has been signed over the flap. Send completed applications to:

**Continental Dorset Club, Inc.  
Junior Dorset Assoc. Scholarship  
P.O. Box 506  
North Scituate, RI 02857-0506**

The National Junior Dorset Association Scholarship Committee will review all applications received. The top applicants may be subject to a personal interview with the committee either in person or by telephone. Final awards are selected by the committee. Applicants will be notified of the selections by October 1, 2008. These awards will be presented at the Annual Meeting of the National Junior Dorset Association in Louisville, KY on Saturday evening November 15, 2008. The complete scholarship application is available on the CDC Website at: [www.dorsets.homestead.com](http://www.dorsets.homestead.com).

### DORSET EWE LAMB FUTURITY PROGRAM GETTING A GREAT START IN 2008

To date we have had 108 polled ewe lambs nominated in the Ohio Dorset and Illinois Dorset Sales, and 44 lambs have been tattooed by new junior owners to participate in this year's program. In the new horned dorset ewe lamb futurity, we had 14 ewe lambs nominated at the Ohio Dorset Sale and ALL 14 head were tattooed by their new junior owners. A first time 100% tattooing for the breed with significant numbers at a sale!

Three breeders have elected to participant in the group nomination program where all of their ewe lambs sold at this year's designated sales will be eligible for the futurity. Thank you to the following group nominators:

**-Riverwood Farms, Powell, OH-  
-Superior Farms, Yukon, OK-  
-Spilde Brothers, Stoughton, WI-**

Of course there are a lot of individual nominators also. The overwhelming support by the Dorset breeders is the major reason why this program has become so successful! Juniors are able to select from a large number of ewe lambs that will fit into both their breeding program and financial budget. There are plenty of sales remaining where junior buyers can select futurity ewe lambs:

**\*May 23-24 : Corn Belt Sale,  
Des Moines, IA**

**\*May 29-31: Reno All-American Sale,  
Reno, NV**

**\*May 30-31: West Virginia Purebred  
Sheep Breeder Sale,  
Petersburg, WV**

**\*June 23-27 : Midwest Stud Ram Sale,  
National Dorset Sale,  
Sedalia, MO  
(horned dorsets also)**

**\*July 18-19 : New England Sale,  
West Springfield, MA  
(horned dorsets also)**

**ALL-AMERICAN JUNIOR SHOW  
RAFFLE TICKETS  
NOW AVAILABLE FROM THE CDC  
OFFICE OR ANY SHOW EXHIBITOR**

**1st Prize: \$1500 BEST BUY GIFT  
CARD**

**2nd Prize: \$250 BEST BUY GIFT CARD**

**3rd Prize: \$100 BEST BUY GIFT CARD**

**Cost: \$5.00 one ticket / \$20.00 five  
tickets**

**Drawing July 6th, 2008 at the show**

**All proceeds go to the All-American  
Junior Show**



**ROYAL~S**  
*Graphic Design Services*

**DALE L. SMITH**

Owner/Graphic Designer

[royal-s@earthlink.net](mailto:royal-s@earthlink.net)

*Specializing in the Livestock Industry!*

17917 Brim Road  
Bowling Green, OH 43402  
ph/fx 419.352.2332



# CONSISTENT QUALITY PRODUCES CONSISTENT RESULTS

Cassell Horned Dorsets thanks its buyers for making the 2008 Ohio Horned Dorset Sale the best ever for the breed and our program!

**2008  
OHIO DORSET SALE  
GRAND CHAMPION  
RAM**



**GRAND CHAMPION RAM**  
Purchased by Thomas Walsh

**RECORD  
HIGH SELLING  
HORNED DORSET  
RAM**



**2008 OHIO DORSET SALE  
GRAND CHAMPION EWE**  
Purchased by Heather & Christina Shotts

## Thanks!

...To All Our Other  
Ohio Sale Buyers:

**2nd Early Fall Ram Lamb**  
Michael Houfe – Houfe Dorsets

**Junior Champion Ewe  
(1st Early Fall Ewe Lamb)**  
Heather & Christina Shotts

**Early Fall Ewe Lamb**  
Kayla Gerfen

**Early Fall Ewe Lamb**  
John E. Carter

**Junior Reserve Champion Ewe  
(1st Late Fall Ewe Lamb)**  
Ashlynn Oliger

**Late Fall Ewe Lamb**  
Brandon O'Dell

**Donation Lamb for All-American**  
Michael Houfe – Houfe Dorsets



**2008 OHIO DORSET SALE  
RESERVE GRAND CHAMPION EWE**  
Purchased by Michael Houfe – Houfe Dorsets

*We have a great selection of ram and ewe lambs, both fall and spring born, at the farm.  
We are also sending 10 head to the National Sale at the Midwest Stud Ram Sale in June.*

# CASSELL HORNED DORSETS

**Leon, Barbara, Paul, Mary Ann & Diana Cassell**

2317 Peppers Ferry Road • Wytheville, VA 24382

Phone: 202/255-1764 • Email: pcasse2001@yahoo.com

Website: [www.horneddorsets.com](http://www.horneddorsets.com)



# 2008 DORSET SPRING SALES RESULTS

## Ohio Polled Dorset Sale

**March 21-22, 2008**

**Eaton, Ohio**

**Townsend Best Polled Dorset Consignment Award:**

**Haven Point Dorsets, Volant, PA**

### -Fall Yearling Rams (2 head avg. \$550.00):

- 1)Mindy Gibson, MO to O'Banion Farms, Waynesville, OH \$300
- 2)Riverwood Farms, OH to Kenneth Wagner, Petaluma, CA \$800

### -Spring Yearling Rams (9 head avg. \$1488.89):

- 1)**Senior Champion** :Paul & Nancy Wissinger, PA to Pink Ladies Dorsets, Plymouth, IN \$1500
- 2)**Senior Reserve Champion**: Van Bair Farms, PA to Jeri Boone, Noblesville, IN \$800
- 3)Spilde Dorsets, WI to Sidney DeVries, Freeport, IL \$400
- 4)Superior Farms, OK to Larry Smith & Family, Crawfordsville, IN and Greg Lough & Family, Darlington, IN \$1050
- 5)Riverwood Farms, OH to Kenneth Wagner, Petaluma, , CA and Mithoefer Dorsets, Lafayette, IN \$7000
- 6)Spilde Dorsets, WI to Sunny Valley Farm-Brian & Cerrita Reed, Manheim, PA \$900
- 7)Spilde Dorsets, WI to Robert L. Glover, Jewett, OH \$300
- 8)Brian & Melanie Barkley, PA to Overtime Farms, Hillsdale, MI \$900
- 10)Olivia Waggoner, PA to Robert L. Glover, Jewett, OH \$550

### -Early Fall Ram Lambs (26 head avg. \$1550.00):

- 1)**Grand Champion & Junior Champion**: Spilde Dorsets, WI to Mithoefer Dorsets, Lafayette, IN \$4750
- 2)**Reserve Grand Champion & Reserve Junior Champion**: Twin Oaks Dorsets, OH to Smith Sheep Farm, IL \$2000
- 3)Ram & Ewe Farm, OH to Mark & Deborah Bell & Family, OH \$4000
- 4)Ram & Ewe Farm, OH to Larry Smith & Family, Crawfordsville, IN and Greg Lough & Family, Darlington, IN \$3100
- 5)Twin Oaks Dorsets, OH to Sugarloaf Dorsets, Pipestone, MN \$3750
- 6)Egan Dorsets, IL to Robert & Linda Highfield & Family, Washington Courthouse, OH \$4400
- 7)Twin Oaks Dorsets, OH to Jim Driscoll, Almo, Ontario, Canada \$2600
- 8)Haven Point Dorsets, PA to Lindsay Coleman, Mt. Gilead, OH \$800
- 9)Van Bair Farms, PA to Stunkle Dorsets, Tuscarora, MD \$1700

- 10)Twin Oaks Dorsets, OH to Olivia Waggoner, East Berlin, PA \$3200
- 11)Robert & Linda Highfield, OH to Marvin Koerper, Geneseo, IL \$500
- 12)Van Bair Farms, PA to Cory Moshier, Gilson, IL \$1200
- 13)Riverwood Farms, OH to Ethan Hodel, Sandwich, IL \$800
- 14)Cordray Dorsets, IL to Cory Moshier, Gilson, IL \$750
- 15)Haven Point/Benedict, PA to Dick O'Banion, Seaman, OH \$400
- 16)Shumaker Dorsets, WI to Courtney Fitzpatrick, Wayland, NY \$1800
- 17)Cedar Lane Dorsets, WI to Jeremiah Essig, Bernville, PA \$900
- 18)Riverwood Farms, OH to W. Keith Stumbo & Family, Honeoye, NY \$600
- 19)Makayla Shaffner, IL to Derek Cunningham, Arcadia, OH \$450
- 20)Makayla Shaffner, IL to Johnson Brothers, Hillsboro, OH \$250
- 21)Mark & Deb Bell & Family, OH to Cheyanna Hatfield, Pioneer, TN \$300
- 22)Sunny Valley Farm, PA to Johanna Rohrer, Manheim, PA \$250
- 23)McCarthy Dorsets, OH to Dick O'Banion, Seaman, OH \$350
- 24)Shady Hill Farm, OH to Robert Mastine, Quebec, Canada \$800
- 25)Sunny Valley Farm, PA to Tom Parker, Vinemont, AL \$250
- 26)Robert & Linda Highfield, OH to 3 ADH Farm-Allen, Adam & Aaron Heishman, Jackson, VA \$400

### -Late Fall Ram Lambs (13 head avg. \$542.31):

- 1)Poverty Point Farm, PA to Trent, Cruz, a/o Olivia Nichols, Harrodsburg, KY \$350
- 2)Haven Point Dorsets, PA to Kirsten Nichols a/o Tabitha Devine, Harrodsburg, KY \$700
- 3)Van Bair Farms, PA to Marvin Koerper, Geneseo, IL \$1700
- 4)Haven Point Dorsets, PA to Sidney DeVries, Freeport, IL \$300
- 5)Bradford Farms, OH to Steve Hasselman, Ridott, IL \$800
- 6)McCarthy Dorsets, OH to Rockin'R Farm, Paxinos, PA \$400
- 7)Riverwood Farms, OH to Good-Ewe Dorsets, Carlisle, IA \$1000
- 8)Makayla Shaffner, IL to Lexi, Libby, Kali & Kyla Wolkow, DeSmet, SD \$300
- 9)Bel-Mar Farm, OH to Sam Dean, Jamestown, OH \$300
- 10)Spilde Dorsets, WI to Snowy Creek, Aurora, VA \$500
- 11)McCarthy Dorsets, OH to Jenna Davis, Chillicothe, OH \$250
- 12)Bel-Mar Farm, OH to Will Parker, Vinemont, AL \$250
- 13)J.L. Thornsborough, IL to Curt Stanley, Bismark, ND \$200

### -Fall Yearling Ewes (28 head avg. \$916.96):

- 1)Riverwood Farms, OH to Marvin Koerper, Geneseo, IL \$1500
- 2)Twin Oaks Dorsets, OH to Mona Lisa Pettersson, Bothell, WA \$3500
- 3)Rodney & Kelly Bianchi, CA to Katie Muir, Sheridan, IN \$600
- 4)Superior Farms, OK to Kaitlyn Verhaeghe, Argos, IN \$2100



**Senior Champion Polled Ram  
Spring Yearling Ram  
Paul & Nancy Wissinger, Sinking Spg., PA**



**Reserve Senior Champion Polled Ram  
Spring Yearling Ram  
Mike & Wendy Van Wagner, Dauphin, PA**



**Reserve Grand Champion Polled Ram  
Res. Jr. Champion- Early Fall Ram Lamb  
Twin Oaks Dorsets, Belle Ctr., OH**

5)Van Bair Farms, PA to Stunkle Dorsets, Tuscarora, MD \$1300  
 6)Riverwood Farms, OH to Marvin Koerper, Geneseo, IL \$2100  
 7)Lauden Acres, PA to Sunny Valley Farm-Brian & Cerrita Reed, Manheim, PA \$800  
 8)Poverty Point Farm, PA to Superior Farm, Yukon, OK \$1300  
 9)Lauden Acres, PA to Pink Ladies Dorsets, Plymouth, IN \$1300  
 10)Rodney & Kelly Bianchi, CA to Dick O'Banion, Seaman, OH \$300  
 11)Superior Farms, OK to Daniels Family Dorsets, Forreston, IL \$2000  
 12)Freitas/Bianchi, CA to Superior Farms, Yukon, OK \$700  
 13)Allan & Norma Freitas, OK to Greg Lough & Family, Darlington, IN \$350  
 14)Riverwood Farms, OH to Sunny Valley Farm-Brian & Cerrita Reed, Manheim, PA \$850  
 15)Rodney & Kelly Bianchi, CA to DeGroat's Dorsets, Kettering, OH \$450  
 16)Lauden Acres, PA to Purple Ribbon Farms, Arcola, IL \$1300  
 17)Makayla Shaffner, IL to Dick O'Banion, Seaman, OH \$375  
 18)Lauden Acres, PA to Marvin Koerper, Geneseo, IL \$500  
 19)Shady Hill Farm, OH to Marvin Koerper, Geneseo, IL \$200  
 20)Paul & Nancy Wissinger, PA to Sunny Valley Farm-Brian & Cerrita Reed, Manheim, PA \$350  
 21)Superior Farms, OK to Penfold Farms, Kingsburg, CA \$950  
 22)J.L. Thornsborough, IL to Will Parker, Vinemont, AL \$200  
 23)Ram & Ewe Farm, OH to Marvin Koerper, Geneseo, IL \$500  
 24)Lauden Acres, PA to Purple Ribbon Farms, Arcola, IL \$600  
 35)Lauden Acres, PA to Purple Ribbon Farms, Arcola, IL \$700  
 36)Sunny Valley Farm, PA to Johanna Rohrer, Manheim, PA \$250  
 37)Shumaker Dorsets, WI to Joe Brammer, Seaman, OH \$300  
 38)Shumaker Dorsets, WI to Joe Brammer, Seaman, OH \$300  
**-Spring Yearling Ewes (55 head avg, \$1169.09):**

1)**Grand Champion & Senior Champion:** Haven Point Dorsets, PA to John Passwaters, Bridgeville, DE \$7500  
 2)**Reserve Grand Champion & Senior Reserve Champion:** Lee & Louise Wagner, PA to Olivia Waggoner, East Berlin, PA \$6500  
 3)Olivia Waggoner, PA to Purple Ribbon Farms, Arcola, IL \$1200  
 4)Haven Point Dorsets, PA to Emily Passwaters, Bridgeville, DE \$4400  
 5)Superior Farms, OK to Pink Ladies Dorsets, Plymouth, IN \$2200  
 6)Mindy Gibson, MO to LaRosh Davison, Wichita, KS \$700  
 7)Rodney & Kelly Bianchi, CA to Riverwood Farms, Powell, OH \$1300  
 8)Haven Point Dorsets, PA to Grace Murphy, Plymouth, IN \$1400  
 9)Riverwood Farms, OH to Olivia Waggoner, East Berlin, PA \$1300  
 10)Lauden Acres, PA to Purple Ribbon Farms, Arcola, IL \$1600  
 11)Haven Point Dorsets, PA to Penfold Farms, Kingsburg, CA \$1500  
 12)Haven Point Dorsets, PA to Freitas/Bianchi, Oakdale, CA \$1100  
 13)Spilde Dorsets, WI to Kaitlyn Verhaeghe, Argos, IN \$1250  
 14)Lien Dorsets, WI to Pink Ladies Dorsets, Plymouth, IN \$700  
 15)Lien Dorsets, WI to Robert & Linda Highfield, Washington Courthouse, OH \$900



Reserve Grand Champion Polled Ewe  
 Reserve Senior Champion - Spring Yrl. Ewe  
 Lee & Louise Wagner, Easton, PA

We'd like to give our thanks and congratulations to those who came to see us at the Ohio Sale! A special thanks to Kevin, Sara and crew for all of your help preparing for the show! Thanks to Stacy for your help in the ring!



This Early Fall  
 Ewe Lamb went  
 to Riverwood Farms.  
 Thank You and  
 Congratulations!

This Spring Yearling  
 Ewe went to Dick Reece  
 and Treston Eads.  
 Thank You and  
 Congratulations!



Thanks to Robert Glover (OH) and Lee and Louise Wagner (PA) for your purchases! A BIG thank you to Freitas-Bianchi (CA) for purchasing our donated All-American Jr. Show Lamb!

Byron, Julie and Olivia Waggoner

**PINE RIDGE DORSETS**  
 49 Pine Ridge Road  
 East Berlin, PA 17316  
 (717) 308-1810  
 julsnliv@comcast.net



Look for Us  
 at the National Sale  
 in June!



# 2008 DORSET SPRING SALES RESULTS

- 16) Houfe Dorsets, WI to Lexi, Libby, Kali & Kyla Wolkow, DeSmet, SD \$1600  
 17) Poynter Sheep Farm, IL to Nicholas Piller, Mendota, IL \$700  
 18) Cordray Dorsets, IL to Cunningham Farms, Arcadia, OH \$700  
 19) Superior Farms, OK to Cunningham Farms, Arcadia, OH \$800  
 20) Mithoefer Dorsets, IN to Jeri Boone, Noblesville, IN \$500  
 21) Spilde Dorsets, WI to Sunny Valley Farm-Brian & Cerrita Reed, Manheim, PA \$600  
 22) Brian & Melanie Barkley, PA to Marvin Koerper, Geneseo, IL \$1400  
 23) Reynolds Stock Farm, OR to Sunny Valley Farm-Brian & Cerrita Reed, Manheim, PA \$400  
 24) Paul & Nancy Wissinger, PA to Don Myers, Fishers, IN \$500  
 25) Haven Point Dorsets, PA to Green River Farms, Davis, CA \$800  
 26) Tim Hall, PA to Mona Lisa Pettersson, Bothell, WA \$900  
 27) Mithoefer Dorsets, IN to Bill & Pam Sheahan, Delavan, WI \$650  
 28) Olivia Waggoner, PA to Lee & Louise Wagner, Lebanon, PA \$550  
 29) Spilde Dorsets, WI to Pink Ladies Dorsets, Plymouth, IN \$700  
 30) Superior Farms, OK to Pink Ladies Dorsets, Plymouth, IN \$650  
 31) Riverwood Farms, OH to Freitas/Bianchi, Oakdale, CA \$1450  
 32) Superior Farms, OK to Woodland Dorsets, Belle Center, OH \$1150  
 33) Makayla Shaffner, IL to Nicholas Piller, Mendota, IL \$2600  
 34) Paul & Nancy Wissinger, PA to 3 ADH Farm-Allen, Adam & Aaron Heishman, Mount Jackson, VA \$450  
 35) Poynter Sheep Farm, IL to MHW Farms, Colfax, IA \$350  
 36) Mithoefer Dorsets, IN to Grace Murphy, Plymouth, IN \$1200  
 37) Mithoefer Dorsets, IN to Olivia Waggoner, E. Berlin, PA \$2200



Junior Champion Polled Ewe  
 Early Fall Ewe Lamb  
 Haven Point/Benedict Ptnrship., Volant, PA

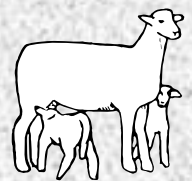


Reserve Junior Champion Polled Ewe  
 Early Fall Ewe Lamb  
 Bradford Farms, Wellington, OH

- 38) John Eaton, PA to Rockin'R Farm, Paxinos, PA \$400  
 39) Spilde Dorsets, WI to Pink Ladies Dorsets, Plymouth, IN \$1450  
 40) Reynolds Stock

- Farm, OR to Benjamin R. Miller, Gaston, IN \$900  
 41) Bernice Linman, MO to JEM Farm, Tipp City, OH \$200  
 42) Poynter Sheep Farm, IL to Ethan Hodel, Sandwich, IL \$900  
 43) Poynter Sheep Farm, IL to Green River Farms, Davis, CA \$900  
 44) Makayla Shaffner, IL to Dale Maycroft, Lovington, IL \$700  
 45) Chapman Sheep Farm, MI to Tom Parker, Vinemont, AL \$200  
 46) Lien Dorsets, WI to Lindsey Coleman, Mt. Gilead, OH \$350  
 47) Lien Dorsets, WI to Spilde Brothers-Kent & Dan, Stoughton, WI \$400  
 48) Ram & Ewe Farm, OH to Superior Farms, Yukon, OK \$600  
 49) Makayla Shaffner, IL to Robert Schembs, Colfax, IN \$1300  
 50) John Eaton, PA to Rockin'R Farm, Paxinos, PA \$225  
 51) Ram & Ewe Farm, OH to JEM Farm, Tipp City, OH \$300  
 52) Chapman Sheep Farm, MI to Jimmy Parker, Vinemont, AL \$200  
 53) Chapman Sheep Farm, MI to Superior Farms, Yukon, OK \$200  
 54) Robert & Linda Highfield, OH to Kaycee Smith, Mt. Gilead, OH \$350  
 55) Leah Gankofskie, ME to Kaycee Smith, Mt. Gilead, OH \$325  
**-Early Fall Ewe Lambs (54 head avg. \$1175.93):**  
 1) **Junior Champion:** Haven Point/Benedict, PA to Emily Passwaters, Bridgeville, DE \$5750  
 2) **Junior Reserve Champion:** Bradford Farms, OH Mike Jensen, Ukiah, CA \$3000  
 3) Mithoefer Dorsets, IN to Lee & Louise Wagner, Lebanon, PA \$1000  
 4) Spilde Dorsets, WI to Annie Larson, Easton, PA \$4250  
 5) Mithoefer Dorsets, IN to Jeri Boone, Noblesville, IN \$950  
 6) Twin Oaks Dorsets, OH to Sean Beskid, Byesville, OH \$900  
 7) Haven Point Dorsets, PA to Superior Farms, Yukon, OK \$2600  
 8) Olivia Waggoner, PA to Riverwood Farms, Powell, OH \$800  
 9) Spilde Dorsets, WI to Sean Eldridge, Winters, CA \$1100  
 10) Superior Farms, OK to Craig Diener, Five Points, CA \$2600  
 11) Twin Oaks Dorsets, OH to Sidney DeVries, Freeport, IL \$2200  
 12) Haven Point Dorsets, PA to Freitas/Bianchi, Oakdale, CA \$1000  
 13) Twin Oaks Dorsets, OH to Daniels Family Dorsets, Forrester, IL \$2050  
 14) Spilde Dorsets, WI to Kaitlyn Verhaeghe, Argos, IN \$2200  
 15) Superior Farms, OK to Mona Lisa Pettersson, Bothell, WI

## Southfield Corporation & Orchard Valley Farm



**"FALCO"**  
 Southfield 2679 RR  
 Champion Ram  
 2007  
 New England Sale  
 Sold to Kriss Hiltz  
 Berwick, Nova  
 Scotia

Orchard Valley 2623  
 Champion Ewe  
 2007  
 New England Sale  
 Sold to  
 Johanna Rohrer  
 Manheim, PA



**Two Flocks  
 One Ideal**

Premier Exhibitor  
 & Breeder  
 2007 Big E

Sheep like this are Available at the Farm  
**Come and Have a Look!**

Best Consignment  
 Award  
 2007 New England  
 Sale

Shepherds: Hoop, Becky and Karin Peterson, 41 Bell Rd., Leyden, MA 01337  
 413-624-5562 ovfarm@mtdata.net





## New Stud Ram Purchased At The 2008 Ohio Dorset Sale!

### **"ROAD RUNNER"** Ram & Ewe Farm 0429F-RR

Our new stud was 2nd Place Class 1 Early Fall Ram Lamb. His sire is "S & P" Saylor's Twin Oaks 616, the twin brother to "Dowjones", the breed record selling ram that sold for \$23,500 at the 2007 Ohio Dorset Sale. His dam is a daughter of "Backflash" Haven Point Dorsets 0291, the 2003 NAILE Champion Ram.

"Road Runner" is bred to be a stud, his five generation pedigree includes the following elite studs: "High Definition", 2006 NAILE Supreme Champion Ram; "Boardwalk", 2006 NAILE Sire of the Year; "Royalty", sire of "Boardwalk", the 2004 National Sale Reserve Champion Ram; "Positive Attitude", 1997 NAILE Supreme Champion Ram; "Progresser", 1997 NAILE Reserve Champion Ram; "Nash", 1999 NAILE Sire of the Year; "Stilts", 1996 Ohio Dorset Sale Champion Ram; "Sonic", 1998 National Centennial Sale Champion Ram; "Nickwell", 2002 NAILE Supreme Champion Ram; and "Encore", 2002 NAILE Sire of the Year.

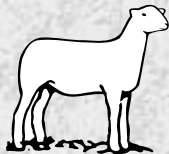
WOW!!!!... with this pedigree, the \$4,000 we paid for him was a bargain.

THANK YOU to our Ohio Dorset Sale and Illinois Dorset Sale buyers and our buyers at the farm.

Visitors Always  
Welcome!

**V.S.F.C.P.**

Enrolled 4-26-2000



# BEL-MAR FARM

## Mark & Debi Bell Family

4809 Casstown-Clark Road • Casstown, OH 45312

Phone: 937/339-6230 • Website: [www.bel-marfarm.com](http://www.bel-marfarm.com) • E-mail: [belmarfarm@verizon.net](mailto:belmarfarm@verizon.net)

Watch for our entries at the Great Lakes Sale in Wooster, OH, May 24th & 25th, and also the National Dorset Sale held at the Midwest Stud Ram Sale in Sedalia, MO, June 25th - 27th. Our entries will be sired by "Rapid Response", "Positive Response" and "Buckeye Bandit" (our new McCarthy Dorsets stud purchased at last year's Midwest Stud Ram Sale where he was 1st Place January Ram Lamb).

\$1250

16) Cedar Lane Dorsets, WI to Lindsay Coleman, Mt. Gilead, OH \$1000

17) Riverwood Farms, OH to Sarah Anne Johnson, Williamsport, OH \$1100

18) Laudon Acres, PA to Olivia Waggoner, East Berlin, PA \$4000

19) Bradford Farms, OH to Jenna Davis, Chillicothe, OH \$2300

20) Van Bair Farms, PA to Jennifer & Jason Apple, Greenfield, IN \$1000

21) Riverwood Farms, OH to Troy Longenecker, Annville, PA \$900

22) Laudon Acres, PA to Olivia Waggoner, East Berlin, PA \$3750

23) Spilde Dorsets, WI to DeGroat's Dorsets, Kettering, OH \$1000

24) Ram & Ewe Farm, OH to Cassidy Oliger, Hagerstown, IN \$900

25) Twin Oaks Dorsets, OH to Kevin LaFavor, Windsor, MO \$900

26) Haven Point Dorsets, PA to Sidney DeVries, Freeport, IL \$800

27) Bradford Farms, OH to Graham Lough, Darlington, OH \$900

28) Riverwood Farms, OH to Grace Murphy, Plymouth, IN \$1300

29) Poverty Point Farm, PA to Melvin Jackson, Albright, WV \$500

30) Guy McKean, PA to Shelby Phillips, Crawfordsville, IN \$850

31) Cordray Dorsets, IL to Kali Wolkow, DeSmet, SD \$1800

32) Myers Polled Dorsets, OH to Colton Guinther, Bucyrus, OH \$600

33) A. Thornsborough, IN to Melvin Jackson, Albright, WV \$350

34) Mithoefer Dorsets, IN to Katie Muir, Sheridan, IN \$600

35) Reynolds Stock Farm, OR to W. Keith Stumbo & Family, Honeoye, NY \$600

36) Reynolds Stock Farm, OR to Cheyanna Hatfield, Pioneer, TN \$325

37) Van Bair Farms, PA to Lee & Louise Wagner, Lebanon, PA \$700

38) Makayla Shaffner, IL to Dick O'Banion, Seaman, OH \$600

39) McCarthy Polled Dorsets, OH to Will Parker, Vinemont, AL \$300

40) Riverwood Farms, OH to Dick O'Banion, Seaman, OH \$500

41) Mithoefer Dorsets, IN to West Family Sheep, Huntsville, TN \$500

42) Mithoefer Dorsets, IN to JEM Farm, Tipp City, OH \$475

43) McCarthy Polled Dorsets, IN to Simmons Family Farm, Adel, GA \$200

44) Riverwood Farms, OH to Nikki Muir, Sheridan, IN \$500

45) Woodland Dorsets, OH to Johnson Bros., Hillsboro, OH \$200

46) Woodland Dorsets, OH to Johnson Bros., Hillsboro, OH \$200

47) Freitas/Bianchi, CA to O'Banion Farms, Waynesville, OH \$450

48) Bel-Mar Farm, OH to William Aycock, Remlap, AL \$350

49) Robert & Linda Highfield, OH to MHW Farms, Colfax, IA \$200

50) Francis Brothers, IL to Cheyanna Hatfield, Pioneer, TN \$300

51) Bel-Mar Farm OH to Sam Dean, Jamestown, OH \$300

52) Shady Hill Farms, OH to Johanna L. Rohrer, Manheim, PA \$200

53) Sunny Valley Farm, PA to Simmons Family Farm, Adel, GA \$200

54) Emily & Laura Hunter, NY to Taylor McKean, Stoneboro, PA \$200

### **-Late Fall Ewe Lambs (23 lots avg. \$571.74):**

1) Spilde Dorsets, WI to Annie Larson, Shebbona, IL \$1400

2) Twin Oaks Dorsets, OH to Olivia Lough, Darlington, IN \$1500

3) Superior Farms, OK to Cody Smith, Crawfordsville, IN \$1400

4) Haven Point Dorsets, PA to Sidney DeVries, Freeport, IL \$850

5) Haven Point Dorsets, PA to Shelby Phillips, Crawfordsville, IN \$550

6) Superior Farms, OK to Grace Lough, Darlington, IN \$800

7) Bradford Farms, OH to Kaitlyn Verhaeghe, Argos, IN \$550

8) Mithoefer Dorsets, IN to Jenna Davis, Chillicothe, OH \$425

9) Poverty Point Farm, PA to Cory Moshier, Gilson, IL \$300

10) Purple Ribbon Farm, IL to Dale Maycroft, Lovington, IL \$950

11) Reynolds Stock Farm, OR to William Aycock, Adel, GA \$250

12) Van Bair Farms, PA to Jeri Boone, Noblesville, IN \$525

# 2008 DORSET SPRING SALES RESULTS

- 13)Mithoefer Dorsets, IN to Jennifer & Jason Apple, Greenfield, IN \$500  
 14)Spilde Dorsets, WI to Kaitlyn Verhaeghe, Argos, IN \$600  
 15)Van Bair Farm, PA to Jennifer & Jason Apple, Greenfield, IN \$275  
 16)Myers Polled Dorsets, OH to Kendyl Guinther, Bucyrus, OH \$500  
 17)Bel-Mar Farm, OH to Cheyanna Hatfield, Pioneer, TN \$400  
 18)Superior Farms, OK to Jenna Davis, Chillicothe, OH \$275  
 19)Quarter Mile Farm, IL to Tom Parker, Adel, GA \$300  
 20)Guy McKean, PA to Melvin Jackson, Albright, WV \$200  
 21)J.L. Thornsborough, IL to Melvin Jackson, Albright, WV \$200  
 22)Woodland Dorsets, OH to Melvin Jackson, Albright, WV \$200  
 23)Woodland Dorsets, WV to Melvin Jackson, Albright, WV \$200  
**-Donated Ewe Lamb – All American Junior Show :**  
 Olivia Waggoner, PA to Freitas/Bianchi, Oakdale, CA \$400

211 LOTS GROSSED \$228,875.00 AVERAGING \$1084.72

## **Ohio Horned Dorset Sale**

**March 21-22, 2008**

**Eaton, Ohio**

***Townsend Best Horned Dorset Consignment Award:***  
***Cassell Horned Dorsets, Wytheville, VA***

### **-Fall Yearling Rams (2 head avg. \$350.00):**

- 1)Micaela Nauman, OH to Scott Chapin, Camden, OH \$300  
 2)Mark lunghuhn & Family, IN to Melvin Stewart, Marysville, OH \$350



Reserve Senior Champion Horned Ram  
 Spring Yearling Ram  
 Mark lunghuhn & Family, Princeton, IN

### **-Spring Yearling Rams (3 head Avg. \$1400.00):**

- 1) **Grand Champion & Senior Champion:**  
 Cassell Horned Dorsets, VA to



Reserve Junior Champion Horned Ram  
 Early Fall Ram Lamb  
 Lance Thompson, Carrollton, OH

Thomas Walsh, North Berwick, ME \$3100

*(Record Selling Horned Dorset Ram)*

- 2)**Senior Reserve Champion:** Mark lunghuhn & Family, IN to Tom Dagel, Watertown, SD \$900

3)Squires Family, OH to Larry Richardson & Family, Oxford, OH \$200

### **-Early Fall Ram Lambs (5 1 head avg. \$730.00):**

- 1)**Junior Reserve Champion:** Lance Thompson, OH to Bill Simmons, Medina, OH \$1000

2)Cassell Horned Dorsets, VA to Michael Houfe, Milton, OH \$1400

3)Jennifer Oberholtzer, PA to Dick O'Banion, Seaman, OH \$200

4)Squires Family, OH to Bill Simmons, Medina, OH \$575

5)Kim Root & Family, OH to Wayne & Michelle Shannon, Amanda, OH \$475

### **-Late Fall Ram Lambs (2 head avg. \$450.00):**

- 1)**Reserve Grand Champion & Junior Champion:** Joel Schwartz, OH to Kaleb Vondenhuevel, Wapakoneta, OH \$750

2)Frank Tiffany, NY to John & Sharon Holz, WV \$200

### **-Fall Yearling Ewes (4 head avg. \$887.50):**

- 1)**Reserve Champion & Senior Reserve Champion:** Cassell Horned Dorsets, VA to Michael Houfe, Milton, WI \$1200

2)Lance Thompson, OH to Heather & Christina Shotts, Quincy, OH \$1600

3)Lance Thompson, OH to Kayla Gerfen, Prospect, OH \$500

4)Galleher Farms, OH to Wayne & Michelle Shannon, Amanda, OH \$250

### **-Spring Yearling Ewes (8 head avg. \$621.88):**

- 1)**Grand Champion & Senior Champion:** Cassell Horned Dorsets, VA to Heather & Christina Shotts, Quincy, OH \$1600

2)Mark lunghuhn & Family, IN to Ridge Betts, Felton, DE \$550

3)Squires Family, OH to Jade Zimmerman, Reinholds, PA \$600

4)Crill Horned Dorsets, IN to Michael Houfe, Milton, WI \$475

5)Lance Thompson, OH to Wayne & Michelle Shannon, Amanda, OH \$375

6)Rick Grimme, IN to Rex Gingerich, Russiaville, IN \$550

7)Galleher Farms, OH to TAC-Barbara & Leon Cassell, Wytheville, VA \$350

8)Mark lunghuhn & Fam., IN to Melvin Stewart, Marysville, OH \$475

**EWEPHORIC!**  
**Sheep Gifts**  
**Horned Dorsets**

**Hundreds of Gifts • Extraordinary Sheep**  
**800/742-5510 • ewephoric.com**

# SCHWARTZ

## Horned Dorsets

*Presenting...*

Special Thanks to Kaleb Vondenhuval of Wapakoneta, OH for his purchase of our winning ram!

Also Thanks to Kaleb for allowing us to retain breeding rights to this ram!

And... a BIG Thanks to Ashley Craun for his great job fitting our sheep at Eaton.



Congratulations to Paul Cassell on his Grand Champion Ram at the Ohio Dorset Sale. He has a Schwartz ewe in his pedigree!

Also Thanks to Paul Cassell for all his help and advice he has given us as we continue to build our flock.

### "MARCH MADNESS"

#### RESERVE GRAND CHAMPION RAM 2008 OHIO DORSET SALE

#### ***Thanks To All Our Ohio Dorset Sale Buyers:***

**Kaleb Vondenhuval, Wapakoneta, OH** – Purchased our Reserve Champion Ram

**Michael Houfe, Milton, WI** – Purchased our 2nd Late Fall Ewe Lamb

**Grace Lough, Darlington, IN** – Purchased a Late Fall Ewe Lamb

**Kayla Gerfen, Prospect, OH** – Purchased a Late Fall Ewe Lamb

*We have fall lambs available at the farm and we have entered three high quality ewe lambs at the National Sale in Sedalia.*

## **Joel Schwartz**

05389 100 Road ~ Spencerville, OH ~ 419/204-9748

Website: [www.ohiosheep.com](http://www.ohiosheep.com) ~ E-mail: [joelcschwartz8499@yahoo.com](mailto:joelcschwartz8499@yahoo.com)



# 2008 DORSET SPRING SALES RESULTS

## -Early Fall Ewe Lambs (12 head avg. \$535.42):

- 1) **Junior Champion:** Cassell Horned Dorsets, VA to Christina Shotts, Quincy, OH \$1250
- 2) Squires Family, OH to Jade Zimmerman, Reinholds, PA \$700
- 3) Squires Family, OH to Jordan Phillips, Crawfordsville, IN \$350
- 4) Kim Root & Family, OH to Ridge Betts, Felton, DE \$550
- 5) Cassell Horned Dorsets, VA to Kayla Gerfen, Prospect, OH \$550
- 6) Lance Thompson, OH to Dick O'Banion, Seaman, OH \$250
- 7) Lance Thompson, OH to Glenn Haven Farm, Grove City, PA \$375
- 8) Lance Thompson, OH to Will Packer, Vinemont, AL \$450
- 9) Kim Root & Family, OH to Wayne & Michelle Shannon, Amanda, OH \$450
- 10) Kim Root & Family, OH to John & Sharon Holz, Shanks, WV \$300
- 11) Cassell Horned Dorsets, VA to John E. Carter, Gaston, IN \$800
- 12) Mark Iunghuhn & Family, IN to Tom Parker, Vinemont, AL \$400

## -Late Fall Ewe Lambs (7 head avg. \$642.86):

- 1) **Junior Reserve Champion:** Cassell Horned Dorsets, VA to Ashlynn Olinger, Hagerstown, IN \$1100
- 2) Joel Schwartz, OH to Michael Houfe, Milton, WI \$500
- 3) Cassell Horned Dorsets, VA to Brandon O'Dell, Spencerville, OH \$550
- 4) Lance Thompson, OH to Heather & Christina Shotts, Quincy, OH \$750
- 5) Galleher Farms, OH to Christina Shotts, Quincy, OH \$500
- 6) Joel Schwartz, OH to Grace Lough, Darlington, IN \$525
- 7) Joel Schwartz, OH to Kayla Gerfen, Prospect, OH \$575

## -Donated ewe Lamb – All American Junior Show:

- Cassell Horned Dorsets, VA to Michael Houfe, Milton, WI \$525



Reserve Grand Champion Horned Ram  
Junior Champion - Late Fall Ram Lamb  
Joel Schwartz, Spencerville, OH

**50 LOTS  
GROSSED  
\$29,425.00  
AVERAGING  
\$668.75**



Reserve Grand Champion Horned Ewe  
Reserve Senior Champion - Fall Yrl. Ewe  
Cassell Family, Wytheville, VA



Junior Champion Horned Ewe  
Early Fall Ewe Lamb  
Cassell Family, Wytheville, VA



Reserve Junior Champion Horned Ewe  
Late Fall Ewe Lamb  
Cassell Family, Wytheville, VA

## **Illinois Dorset Sale**

**April 4-5, 2008**

**Champaign, Illinois**

## ***Townsend Best Polled Dorset Consignment Award:***

***Riverwood Farms, Powell, Ohio***

## **-Fall Yearling Ram (1 head avg. \$350):**

- 1) Houfe Dorsets, WI to Andy Woods, Baylis, IL \$350

## **-Spring Yearling Rams (5 head avg. \$430):**

- 1) Spilde Dorsets, WI to Crouch Dorsets, Decatur, IL \$600
- 2) Riverwood Farms, OH to Michael Pope, Morristown, IN \$550
- 3) Shaffner Dorsets, IL to Megan Hediger, Greenville, IL \$200
- 4) Lien Dorsets, WI to MHW Farms, Colfax, IA \$600
- 5) Paul & Nancy Wissinger, PA to Larry H. Kraft, Secor, IL \$200

## **-September Ram Lambs (13 head avg. \$603.85):**

- 1) **Grand Champion & Senior Champion:** Twin Oaks Dorsets, OH to Daniels Family Dorsets, Forreston, IL \$3500
- 2) **Reserve Grand Champion & Reserve Senior Champion:** Shaffner Dorsets, IL to Allison McLane, Elizabeth, IL \$600
- 3) Riverwood Farms, OH to Roger, David & Ida Price, Pardeeville, WI \$700
- 4) Twin Oaks Dorsets, OH to Sidney DeVries, Freeport, IL \$800
- 5) Spilde Dorsets, WI to Trevor Torrance, Good Hope, IL \$500
- 6) Riverwood Farms, OH to Shirley, Allen & Daylon Scheele, Stockton, IL \$475
- 7) Annie Larson, IL to Austin Kuhring, Dieterich, IL \$300
- 8) Mithoefer Dorsets, IN to Elizabeth Ferguson, Marquand, MO \$275
- 9) D. Joel Parker, IN to J. Bond, Galatia, IL \$150
- 10) Francis Brothers, IL to Trent Nicholson, Eureka, IL \$200
- 11) Wolkow Dorsets, SD to Leon Byers, Harvard, IL \$150
- 12) Bel-Mar Farm, OH to J. Bond, Galatia, IL \$150
- 13) Ram & Ewe Farm, OH to PRF-Dick Reece & Treston Eads, Arthur, IL \$250

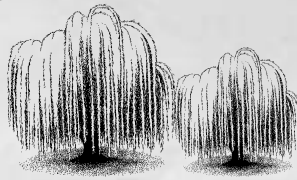
## **-October Ram Lambs (4 head avg. \$575):**

- 1) **Junior Champion:** Shaffner Dorsets, IL to M & M Sheep Co., Palestine, IL \$300
- 2) **Reserve Junior Champion:** Cordray Dorsets, IL to Martin Burnridge, Hampshire, IL \$275
- 3) J.L. Thornsborough, IL to Andy Woods, Baylis, IL \$225
- 4) Riverwood Farms, OH to Grace Murphy, Plymouth, IN \$1500

## **-Spring Ram Lambs (5 head avg. \$190):**

- 1) Prairie Lane Farm, MO to James R. Mullis & Family, Reynolds,

# TWO WILLOW RANCH



**We Had a Great Day at the 2008 Junior Cow Palace!**



## **Grand Champion Dorset Ram**

He sells at Reno  
or Sedalia!



## **Reserve Grand Champion Ewe**

Shown in the  
slick shorn class.



## **Champion Pair of Ewe Lambs**

Both lambs are  
slick shorn.



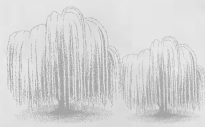
## **Champion Dorset Market Lamb**

Our Dorsets  
have muscle!

***Come look for us at the...  
2008 Reno All-American Sale and the National Dorset Sale in Sedalia!***

**John & Cindy Monahan**

4324 Spring Hill Road  
Petaluma, CA 94952  
707/778-7593



Email: [John@twowillow.com](mailto:John@twowillow.com)  
Website: [www.TwoWillowRanch.com](http://www.TwoWillowRanch.com)

**Brianna & Erin  
Monahan**

707/480-2151  
707/490-9101

# 2008 DORSET SPRING SALES RESULTS

IN \$175

- 2)Mindy Gibson, MO to Elizabeth Ferguson, Marquand, MO \$225  
 3)Mindy Gibson, MO to Leon Byers, Harvard, IL \$150  
 4)Dusty Rincker, IL to Chad Hunter, Avon, IL \$250  
 5)Watson Dorsets, IL to Chad Hunter, Avon, IL \$150

## -Fall Yearling Ewes (7 head avg. \$621.43):

- 1)Riverwood Farms, OH to PRF-Dick Reece & Treston Eads, Arthur, IL \$1700  
 2)Cordray Dorsets, IL to Haydens Dorsets, Idaville, IN \$900  
 3)Ram & Ewe Farm, OH to Marvin L. Koerper, Geneseo, IL \$300  
 4)Houfe Dorsets, WI to Peterson Sheep, Arlington, MN \$300  
 5)Riverwood Farms, OH to Marvin L. Koerper, Geneseo, IL \$450  
 6)Cordray Dorsets, IL to Sheilina Nohner, Watkins, MN \$500  
 7)Millennium Farms, IN to Lexi, Libby, Kyla & Kali Wolkow, DeSmet, SD \$200

## -Spring Yearling Ewes (30 head avg. \$395):

- 1)**Grand Champion & Senior Champion:** Lien Dorsets, WI to Haydens Dorsets, Idaville, IN \$700  
 2)**Reserve Senior Champion:** Prairie Lane Farm, MO to Crouch Dorsets, Decatur, IL \$800  
 3)Riverwood Farms, OH to Ethan Hodel, Sandwich, IL \$1100  
 4)Kolb Dorsets, IL to Nicholas Piller, Mendota, IL \$1000  
 5)Houfe Dorsets, WI to Leon Byers, Harvard, IL \$325  
 6)Spilde Dorsets, WI to Michael Pope, Morristown, IN \$450  
 7)Mindy Gibson, MO to Ashton Crews, Anna, IL \$350  
 8)Lien Dorsets, WI to Elizabeth Ferguson, Marquand, MO \$300  
 9)CJN Dorsets, IL to Spilde Brothers-Kent & Dan, Stoughton, WI \$600  
 10)Mithoefer Dorsets, IN to Robert Hood, Buffalo, IL \$325

11)Riverwood Farms, OH to Elizabeth Ferguson, Marquand, MO \$650

- 12)Spilde Dorsets, WI to CJN Dorsets, Emington, IL \$275  
 13)Spilde Dorsets, WI to Lexi, Libby, Kyla & Kali Wolkow, DeSmet, SD \$350  
 14)Superior Farms, OK to Marvin L. Koerper, Geneseo, IL \$350  
 15)Spilde Dorsets, WI to William Aycock, Remlap, AL \$300  
 16)Mithoefer Dorsets, IN to Michael Houfe-Houfe Dorsets, Milton, WI \$325  
 17)MGM Dorsets, IN to Elizabeth Ferguson, Marquand, MO \$325  
 18)Paul & Nancy Wissinger, PA to Sheilina Nohner, Watkins, MN \$350  
 19)Step Ahead Dorsets, IL to Leon Byers, Harvard, IL \$275  
 20)J.L. Thornsborough, IL to Peterson Sheep, Arlington, MN \$200  
 21)Millennium Farms, IN to Leon Byers, Harvard, IL \$200  
 22)Lien Dorsets, WI to Grace Murphy, Plymouth, IN \$400  
 23)Mithoefer Dorsets, IN to Grace Murphy, Plymouth, IN \$275  
 24)MGM Dorsets, IN to Andy Woods, Baylis, IL \$325  
 25)CJN Dorsets, IL to James R. Mullis & Family, Reynolds, IN \$300  
 26)Daylight Farms, IN to Lexi, Libby, Kyla & Kali Wolkow, DeSmet, SD \$200  
 27)D. Joel Parker, IN to Makayla Shaffner, Annapolis, IL \$200  
 28)D. Joel Parker, IN to Makayla Shaffner, Annapolis, IL \$200  
 29)D. Joel Parker, IN to Makayla Shaffner, Annapolis, IL \$200  
 30)Daylight Farms, IN to Allen Scheele, Stockton, IL \$200

## -Brood Ewe w/ Lambs (1 lot avg. \$425):

- 1)Shaffner Dorsets, IL to Ashton Crews, Anna, IL \$425

## Two New Stud Rams For GOOD-EWE DORSETS



**"Desperado" Spilde 7811 (RR)**

Sire: Spilde 7533 "Bandit"  
 Dam: Spilde 7028 ("Silver Streak" daughter)

"Desperado" has many outstanding qualities...

- ✓ beautiful breed type
- ✓ excellent bone, feet and legs
- ✓ big and tall ram with plenty of length

*Thank You Spilde Brothers for giving us this opportunity to add this tremendous stud ram to our flock.*

*We believe these two new stud rams will be a great fit with our "High Power" and "Son of a Gun" females.*

*Look for the lambs by these stud rams... They're bound to be very special!*



**Riverwood Farms 4976 (RR)**

Purchased at the 2008 Ohio Dorset Sale.

Sire: "Incision" RF 4259  
 Dam: Riverwood Farms 3538 ET

To quote the comment in the Ohio sale catalog, "This is one of the fastest growing lambs ever at Riverwood Farms. This guy is going to be huge!"

At the NAILE "Incision" was named Sire of the Year.

**GOOD-EWE DORSETS**  
 Mike Goodhue & Family

Phone: 515/971-0114  
 3102 S23 Highway • Carlisle, IA 50047  
 Goodhue4@juno.com





**Illinois Sale Grand Champion Polled Dorset Ram**  
**September Ram Lamb**  
**Twin Oaks Dorsets, Belle Center, OH**



**Illinois Sale Grand Champion Polled Dorset Ewe**  
**Spring Yearling Ewe**  
**Maureen Lien & Daughters, Cambridge, WI**

**-September Ewe Lambs (18 head avg. \$469.44):**

- 1)Twin Oaks Dorsets, OH to Sidney DeVries, Freeport, IL \$1500
- 2)Prairie Lane Dorsets, MO to Michael Pope, Morristown, IN \$400
- 3)Mithoefer Dorsets, IN to Anna Trotter, Marysville, IN \$500
- 4)Spilde Dorsets, WI to Chelsea Johns, Marysville, IN \$450
- 5)Spilde Dorsets, WI to Ellie Bretzman, Chebanse, IL \$650
- 6)Riverwood Farms, OH to Ethan Hodel, Sandwich, IL \$650
- 7)Prairie Lane Farm, MO to Shane Lobdell, Lena, IL \$600
- 8)Spilde Dorsets, WI to Ashton Crews, Anna, IL \$350
- 9)Step Ahead Dorsets, IL to PRF-Dick Reece & Treston Eads, Arthur, IL \$825
- 10)Wolkow Dorsets, SD to Ashton Crews, Anna, IL \$200
- 11)Cordray Dorsets, IL to Haydens Dorsets, Idaville, IN \$350
- 12)Quarter Mile Farms, IL to Leon Byers, Harvard, IL \$300
- 13)Spilde Dorsets, WI to Shane Lobdell, Lena, IL \$400
- 14)Riverwood Farms, OH to Ashton Crews, Anna, IL \$375
- 15)Wolkow Dorsets, SD to MHW Farms, Colfax, IA \$200
- 16)J.L. Thornsborough, IL to J. Bond, Galatia, IL \$200
- 17)Quarter Mile Farm, IL to Trent Nicholson, Eureka, IL \$200
- 18)D. Joel Parker, IN to Brianda Towell, Marthasville, IN \$300

**-October Ewe Lambs (16 head avg. \$389.06):**

- 1)**Reserve Grand Champion & Junior Champion:**Ram & Ewe Farm, OH to Haydens Dorsets, Idaville, IN \$800
- 2)**Reserve Junior Champion:** Twin Oaks Dorset, OH to Kassidy Olinger, Hagerstown, IN \$1400
- 3)Kolb Dorsets, IL to Allison McLane, Elizabeth, IL \$375
- 4)Bel-Mar Farm, OH to Allen Scheele, Stockton, IL \$250
- 5)Wolkow Dorsets, SD to Peterson Sheep, Arlington, MN \$225
- 6)Cordray Dorsets, IL to Haydens Dorsets, Idaville, IN \$300
- 7)Superior Farms, OK to Ryan McLane, Elizabeth, IL \$275
- 8)Riverwood Farms, OH to Sidney DeVries, Freeport, IL \$600
- 9)Daylight Farm, IN to Daylon Scheele, Stockton, IL \$150
- 10)Kolb Dorsets, IL to Nicholas Piller, Mendota, IL \$550
- 11)Kolb Dorsets, IL to Crouch Dorsets, Decatur, IL \$250
- 12)Wolkow Dorsets, SD to Leon Byers, Harvard, IL \$200

- 13)Mindy Gibson, MO to J. Bond, Galatia, IL \$200
- 14)D. Joel Parker, IN to Anna Trotter, Marysville, IN \$200
- 15)Crouch Dorsets, IL to Leon Byers, Harvard, IL \$150
- 16)Francis Brothers, IL to Michaela Haley, Sedgewickville, MO \$300

**-Late Fall Ewe Lambs (4 head avg. \$343.75):**

- 1)Shaffner Dorsets, IL to CJN Dorsets, Emington, IL \$500
- 2)Kolb Dorsets, IL to Jonathan Albright, Rock City, IL \$250
- 3)Superior Farms, OK to Poynter Sheep Farm, Paris, IL \$275
- 4)Kolb Dorsets, IL to William Aycock, Remlap, AL \$350

**-Spring Ewe Lambs (9 head avg. \$300):**

- 1)Mindy Gibson, MO to Daniels Family Dorsets, Forreston, IL \$325
- 2)Prairie Lane Farm, MO to Daniels Family Dorsets, Forreston, IL \$350
- 3)Millennium Farms, IN to Chelsey Peters, Nevada, TX \$375
- 4)Dusty Rincker, IL to Ashton Crews, Anna, IL \$325
- 5)LaRosh Davison, KS to Logan Wilson, IA \$300
- 6)Step Ahead Dorsets, IL to Peterson Sheep, Arlington, MN \$250
- 7)J.L. Thornsborough, IL to Megan Hediger, Greenville, IL \$275
- 8)Kendrick Dorsets, IL to Leon Byers, Harvard, IL \$275
- 9)Crouch Dorsets, IL to Leon Byers, Harvard, IL \$225

**113 LOTS GROSSED \$48,975.00 AVERAGING \$433.41**

## Our Leading Ladies for 2008



**A FANCY PAIR  
 OF "STEALTH"  
 Sired Fall  
 EWE LAMBS!**

**We have a great  
 selection of fall  
 and spring born  
 lambs sired by...  
 "Stealth", "Sony"  
 and "Prime Time".**

**Rick, Angie, Ashley  
 & Kristina Klampe**  
 89 Ankeny Hill Road SE  
 Jefferson, Oregon 97352

**Phone: 503/587-0650**



**KLAMPE  
 POLLED DORSETS**

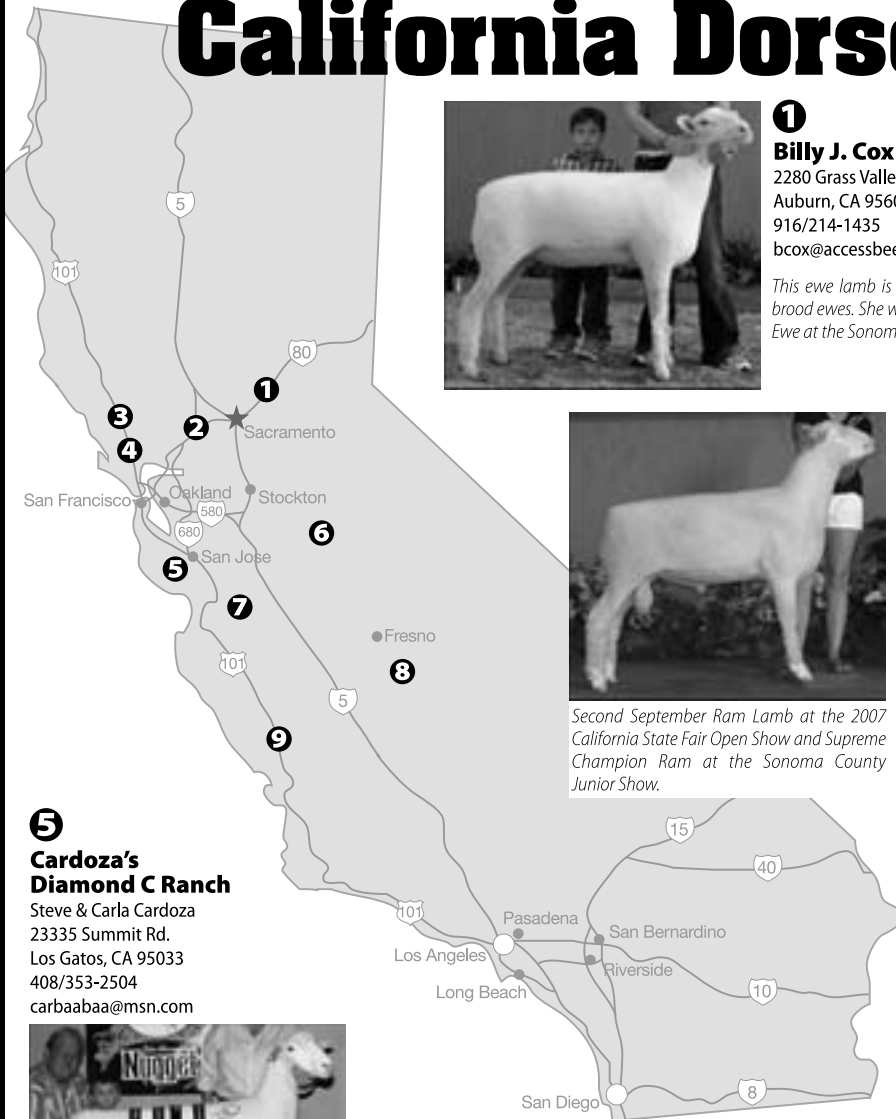
**www.klampepolledorsets.com**

# OHIO PHOTO GALLERY



Quality genetics from the west coast...

# California Dorset Breeders



**1 Billy J. Cox**  
2280 Grass Valley Hwy #118  
Auburn, CA 95603  
916/214-1435  
bcox@accessbee.com

*This ewe lamb is typical of our brood ewes. She was Champion Ewe at the Sonoma County Fair.*

**2 Green River Farms**  
Johnnie Johnson  
25265 Carlsbad Ave.  
Davis, CA 95616  
530/979-0028  
johjohnson@excite.com



*Champion Ram at the 2007 California State Fair and Cow Palace.*



**3 Ghiselin's Polled Dorsets**  
Ken & Erlene Ghiselin  
1485 Olivet Rd.  
Santa Rosa CA 95401  
707/546-9981  
ghiselin@sonic.net

*Second September Ram Lamb at the 2007 California State Fair Open Show and Supreme Champion Ram at the Sonoma County Junior Show.*

**5 Cardoza's Diamond C Ranch**  
Steve & Carla Cardoza  
23335 Summit Rd.  
Los Gatos, CA 95033  
408/353-2504  
carbaabaa@msn.com



*Grand Champion Ewe at the 2007 Nugget All-American Show & Sale in Reno. Sold to Spilde Brothers and Bob Egan.*



**Freitas/Bianchi Dorsets**

**6**  
Allan & Norma Freitas  
10042 Cleveland Ave.  
Oakdale, CA 95361  
209/847-1017  
freitas1017@sbcglobal.net

**7**  
Rodney & Kelly Bianchi  
7430 Lovers Lane  
Hollister, CA 95023  
831/637-0790  
kelly\_a\_bianchi@yahoo.com

*Junior Champion Ewe (Late Fall Ewe Lamb) at the 2007 Nugget All-American Show & Sale in Reno. Sold to Coupe Ranch and King Ranch.*



"BurneRR"

**8 Penfold Dorsets**  
Ken, Teri, Jared & Cody Penfold  
14585 E. Caruthers Ave.  
Kingsburg, CA 93631  
559/897-4878  
penfarm@inreach.com

*Reserve Supreme Ram at 2005 California State Fair Jr. Show and 2006 Cow Palace Open Show. Supreme Ram at 2006 Cow Palace Jr. Show. Sold to Spilde Brothers and Cedar Lane Dorsets.*



**9 KD Dorsets**  
Jerry Dean  
9225 N. Santa Margarita Rd.  
Atascadero, CA 93422  
805/466-9721  
jerry4dean@sbcglobal.net

*Champion November Ram Lamb at several California County Fairs. Sired by the 3rd Yearling Ram at the 2005 National Dorset Sale in Reno.*

**Contact Any Of These Dorset Breeders For Quality Seedstock!**



Entries close June 1, 2008

**Entry Form**

Only One Child Per Entry Form

Exhibitor No. \_\_\_\_\_

**Sedalia, Missouri All-American Junior Show July 4th - 6th, 2008**

Name: \_\_\_\_\_ Age: \_\_\_\_\_ (on July 1, 2008) Phone: \_\_\_\_\_

Address: \_\_\_\_\_ E-mail: \_\_\_\_\_

City: \_\_\_\_\_ State: \_\_\_\_\_ Zip: \_\_\_\_\_ Parent or Guardian's Name: \_\_\_\_\_

Use separate entry blank for each breed Breed Code: (circle only one)

Cheviot-01 Columbia-02 \*Polled Dorset-04 \*Horned Dorset-05 Hampshire-06 Montadale-07

(see For Dorset Only box to make entries in both Polled &amp; Horned)

Natural Colored-08 Oxford-09 \*Shetlands-10 Shropshire-12 Southdown-13 Lincoln-14 Tunis-15

(see For Shetlands Only box to make entries)

Classes: Indicate the number of entries you will have in each class.

Limit: 2 entries allowed in each class listed below; 1 entry allowed in each group class.

**ALL OTHER BREEDS:**

- \_\_\_\_\_ 21 Senior Ram Lamb (9-1 thru 12-31 last year)  
 \_\_\_\_\_ 22 January Ram Lamb (1-1 thru 1-31)  
 \_\_\_\_\_ 23 February Ram Lamb (2-1 thru 2-28)  
 \_\_\_\_\_ 24 March Ram Lamb (3-1 thru 3-31)  
 \_\_\_\_\_ 25 Yearling Ewe  
 \_\_\_\_\_ 26 Pair of Yearling Ewes (2 yearling ewes)  
 \_\_\_\_\_ 27 Senior Ewe Lamb (9-1 thru 12-31 last year)  
 \_\_\_\_\_ 28 January Ewe Lamb (1-1 thru 1-31)  
 \_\_\_\_\_ 29 February Ewe Lamb (2-1 thru 2-28)  
 \_\_\_\_\_ 30 March Ewe Lamb (3-1 thru 3-31)  
 \_\_\_\_\_ 31 Pair of Ewe Lambs (2 ewe lambs)  
 \_\_\_\_\_ 32 Young Flock (1 ram, 2 ewe lambs)  
 \_\_\_\_\_ 33 Best Four Head of Ewes (any combo of 4 ewes)  
 \_\_\_\_\_ 34 Market Lamb  
 \_\_\_\_\_ 35 Ram Fleece  
 \_\_\_\_\_ 36 Ewe Fleece

For PROMOTIONAL CONTESTS circle section number:

	Senior (age 17-21)	Intermediate (age 15-16)	Junior (age 12-14)	Beginner (age 11 and younger)
Logo	0701	0702	0703	0704
Ad Layout Contest	0711	0712	XXXX	XXXX
Poster Contest	XXXX	XXXX	0723	0724
Photo Contest	0731	0732	0733	0734
Essay Contest	0741	0742	0743	XXXX
T-shirt Logo Contest	0751	0752	0753	XXXX

**\*FOR DORSETS ONLY:**

- \_\_\_\_\_ 21 September Ram Lamb  
 \_\_\_\_\_ 22 October - November Ram Lamb  
 \_\_\_\_\_ 23 December - January 15th Ram Lamb  
 \_\_\_\_\_ 24 January 16th & Later Ram Lamb  
 \_\_\_\_\_ 25 Yearling Ewe  
 \_\_\_\_\_ 26 Pair of Yearling Ewes (2 yearling ewes)  
 \_\_\_\_\_ 27 September Ewe Lamb  
 \_\_\_\_\_ 28 October - November Ewe Lamb  
 \_\_\_\_\_ 29 December - January 15th Ewe Lamb  
 \_\_\_\_\_ 30 January 15th & Later Ewe Lamb  
 \_\_\_\_\_ 31 Pair of Ewe Lambs (2 ewe lambs)  
 \_\_\_\_\_ 32 Young Flock (1 ram, 2 ewe lambs)  
 \_\_\_\_\_ 33 Best Four Head of Ewes (any combo of 4 ewes)  
 \_\_\_\_\_ 34 Market Lamb  
 \_\_\_\_\_ 35 Ram Fleece  
 \_\_\_\_\_ 36 Ewe Fleece

**\*FOR SHETLANDS ONLY:**

- \_\_\_\_\_ 21 Senior Ram Lamb (9-1 thru 12-31 last year)  
 \_\_\_\_\_ 22 February Ram Lamb (2-1 thru 2-28)  
 \_\_\_\_\_ 23 March Ram Lamb (3-1 thru 3-31)  
 \_\_\_\_\_ 24 April Ram Lamb (4-1 thru 4-30)  
 \_\_\_\_\_ 25 Yearling Ewe  
 \_\_\_\_\_ 26 Pair of Yearling Ewes (2 yearling ewes)  
 \_\_\_\_\_ 27 Senior Ewe Lamb (9-1 thru 12-31 last year)  
 \_\_\_\_\_ 28 February Ewe Lamb (2-1 thru 2-28)  
 \_\_\_\_\_ 29 March Ewe Lamb (3-1 thru 3-31)  
 \_\_\_\_\_ 30 April Ewe Lamb (4-1 thru 4-30)  
 \_\_\_\_\_ 31 Pair of Ewe Lambs (2 ewe lambs)  
 \_\_\_\_\_ 32 Young Flock (1 ram, 2 ewe lambs)  
 \_\_\_\_\_ 33 Best Four Head of Ewes (any combo of 4 ewes)  
 \_\_\_\_\_ 34 Market Lamb  
 \_\_\_\_\_ 35 Ram Fleece  
 \_\_\_\_\_ 36 Ewe Fleece

To calculate entry fee: Add totals of lines 21 through 34 \_\_\_\_\_ x \$15.00 = \$ \_\_\_\_\_

Enclose check with entry form. Make checks payable to:  
**All-American Junior Show**

- ☐ Check here if your child is 9 years old or less and interested in the All-American Lamb Camp.  
 Note: Lamb Camp Participants need not be exhibitors (i.e. younger siblings) but must bring a halter-broken lamb to Camp.

- ☐ Check here if you participated in last year's All-American Junior Show

Please mark T-shirt size of the exhibitor: YOUTH or ADULT - X-SMALL SMALL MEDIUM LARGE X-LARGE  
 (circle only one of the two) (circle only one of the five)

I Have Read the Above Rules and Regulations and will abide by same: \_\_\_\_\_

(Signature)

Mail completed entry blank(s) together with appropriate fees to:

All-American Junior Show • 15603 173rd Ave • Milo, Iowa 50166

# THANKS ...To All Our Buyers At The Ohio Dorset Sale!



2nd Fall Yearling Ewe Class II  
Sold to Kaitlyn Verhaeghe, IN



2nd Late Fall Ewe Lamb Class II  
Sold to Larry Smith & Family, IN



3rd Spring Yearling Ewe Class III  
Sold to Pink Ladies Dorsets, IN



Our Popular Spring Yearling Ram  
Sold to Greg Lough & Larry Smith, IN



A Real Fancy Early Fall Ewe Lamb  
Sold to Craig Diener, CA



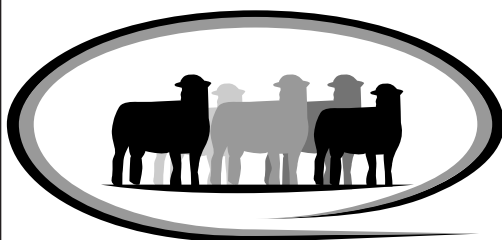
6th Fall Yearling Ewe Class I  
Sold to Daniels Family, IL

## Thanks Also To These Other Ohio Dorset Sale Buyers:

Penfold Farms, CA • Derrick Cunningham, OH • Woodland Dorsets, OH • Mona Lisa Petterson, WA • Jenna Nicole Davis, OH

## And... Thanks To Our Great Show Help At Ohio:

Doug Gehring • Noel Olson • Anderson Family • Kelsi Norman



**SUPERIOR**  
F A R M S

*Watch For Our National Sale Entries In Sedalia!*

**Evan Snyder, Farm Manager • Shawn Norman, Llama Lady**

P.O. Box 22546 • Oklahoma City, OK 73123

405/314-1642 • 405/354-1401 • Fax 405/354-2332 • llamas@superiorfarms.net

2008...

# NATIONAL DORSET SHOW & SALE

**SHOW: 8:00 AM ~ WEDNESDAY, JUNE 25**  
(Horned Dorsets Show Between Polled Rams & Ewes)

Kyle Thayer, Judge

**SALE: 4:30 PM ~ FRIDAY, JUNE 27**

**POLLED And...  
HORNED DORSETS**

**Dorset Breakfast &  
CDC Annual Meeting:**  
8:00 AM ~ FRIDAY, JUNE 27



2007 Grand Champion Polled Yearling Ram from Ohio sold to Ohio.



2007 Grand Champion Dorset Wether Sire; a Kansas Lamb sold to Kansas at \$6,400.



2007 Grand Champion Polled Fall Ewe Lamb from Pennsylvania sold for \$8,250 to Minnesota.



2007 Grand Champion Horned Yearling Ram from Ohio sold to Arkansas.

**BOER GOATS...**  
SHOW: 7:00 pm  
Wednesday

SALE: 7:00 pm  
Thursday

**MIDWEST  
BOER GOAT SALE**



# The One and Only MIDWEST STUD RAM SALE

**America's Greatest Sheep Sale!**

**JUNE 23 • 28**

MISSOURI STATE FAIRGROUNDS

ABOUT...  
**3000**  
REGISTERED  
RAMS & EWES  
...FROM 40 STATES!

**SEDALIA**

Check these Websites for added information on these Sales...  
[www.sheepsales.com](http://www.sheepsales.com) or [www.breedersworld.com](http://www.breedersworld.com)

Dorset Wether Sires  
and Dams Sell Friday  
Evening Following  
the Breeding  
Sheep in the  
National  
Dorset Sale.

# MIDWEST CLASSIC WETHER SIRE SALE

**SHOW:**  
7:00 AM  
THURSDAY

**SALE:**  
8:00 AM  
SATURDAY

Shropshires, Dorsets & Club Lambs Show Wednesday  
Evening...about 7:00 pm...Brad Gillmore, Judge.

## 14 BREEDS

TEXELS  
DORPERS  
SUFFOLKS  
KATAHDINS  
COLUMBIAS  
HAMPSHIRE  
MONTADALES  
CORRIEDALES  
SHROPSHIRE  
SOUTHDOWNS  
RAMBOUILLETS  
POLLED DORSETS  
HORNED DORSETS  
NATURAL COLORED

Contact  
Us For  
Additional  
Information

**Sheep Breeder**  
Telephone 573/442-8257 – Fax 573/874-8843  
PO Box 796 – Columbia, Missouri 65205-0796

**Sale  
management  
service**



THE  
CONTINENTAL  
DORSET CLUB, INC

Debra Hopkins, Secretary  
P.O. Box 506  
North Scituate, RI 02857-0506