

The DORSET *Connection*

A Publication Of The Continental Dorset Club

Volume 12 Issue 2

Spring/Summer 2010

NATIONAL DORSET SALE A SUCCESS AT THE 50th ANNIVERSARY OHIO SALE



Champion Polled Ram - Fall Yearling Ram
Reynolds Stock Farm, Aumsville, OR
Sold to Larry D. Inbody & Family, Jenera, OH

The 2010 National Dorset Sale was held in conjunction with the 50th Anniversary Ohio Dorset Sale held in Eaton, OH on March 19-20, 2010. Attendance was great along with the enthusiasm displayed by the Dorset breeders. The Horned Dorsets had another excellent sale with a strong \$638.46 average. The Polled Dorset average was down from last year but numbers were up and the quality of the sheep, especially the yearling ewes was unlike any other sale before.

Being the National Sale, things got started on Thursday with the breed type inspections. A big thank-you to Mike Crowder and Sam Wiford for serving as the inspectors this year. I would also like to thank the breeders for their cooperativeness during the inspection process. There were no disqualifications and only a slight amount of serious defects were noted mostly in the mouth and hoof color areas.

On Friday, judge Brad Payne, sorted through an excellent set of sheep. The Grand Champions are shown on this cover page. Congratulations to all the consignors on bringing an excellent set of Dorsets to the National Sale! Brad had several tough decisions to make along the way while setting up a sale order for Saturday.

Friday night the Ohio Dorset Association hosted a BBQ dinner in the Bruner sale arena with the CDC Annual Membership meeting following. The complete meeting minutes are in this newsletter and many awards and presentations were made. Tom Diel, retiring Great Plains two-term director and past

continued on page 6



Champion Horned Ram -Early Fall Ram Lamb
Tim Gadsby, Stoneboro, PA
Sold to Leaf Livestock, Geneseo, IL



Champion Polled Ewe - Fall Yearling Ewe
Superior Farms, Yukon, OK
Sold to Emily Passwaters, Bridgeville, DE



Champion Horned Ewe - Spring Yearling Ewe
Michael Houfe, Milton, WI
Sold to Christina Shotts, Quincy, OH

Introducing...

"Prime Cut"

Be on the lookout
for "Prime Cut" lambs
from Sunny Valley Farm
this coming fall!



Brian & Cerrita Reed

2564 Valley Road • Manheim, PA 17545
Cell: 717/587-0690 • bcree@dejazzd.com

"Prime Cut" is a "Sony" son and out of Klampe 428, a "Major League" daughter who is also the dam of "Prime Time", Junior Champion Ram at the 2007 NAILE. "Sony" also sired the Champion Ram at the 2009 Ohio Dorset Sale. "Prime Cut" was also Supreme Champion Ram at the Oregon State Fair as well as a class winner at the 2009 NAILE.

Check out Klampe entries at Sedalia... Half siblings to "Prime Cut" sell there!



**Reserve
Grand Champion
&
2nd High Selling
Ram
2010 National
Dorset Show & Sale**

Purchased by
Sunny Valley Farm

THANKS TO,
EVAN SNYDER & CREW...
for another fantastic job fitting and
showing "Prime Cut" in Ohio!



Rick, Angie, Ashley & Kristina Klampe
89 Ankeny Hill Road SE • Jefferson, OR 97352
503/559-9052 • rick.klampe@linnbenton.edu
www.klampepolledorsets.com

TABLE OF CONTENTS

Cover:

National Dorset Sale A Success At the 50th Anniversary Ohio Sale.....1,6

Table of Contents, Advertisers & CDC Directors.....3

Dorset Calendar & Promotional Items.....4

Feature Articles

2010 Annual Director & Membership Meetings Minutes.....7-9

Northeast Dorset Breeders Spring Openhouse Meeting.....11

President's Letter.....10

Advertising Rates.....10

Commercial Dorset Connection

Preventing Internal Parasites Through Pasture Management Principles..12

Announcements:

Dorset Wethers to be Registered for CDC Sponsored Events.....14

Western & Great Lakes Director Election Results.....14

Announcing Summer/Fall CDC Office Closings.....14

CDC Rules Guide, Constitution & By-Laws Online.....14

2010 Dorset Breeder Excellence Awards.....14

The Dorset Family Looses Breeders in Recent Months.....14

Youth News:

2010 All-American Junior Show East Lansing, MI.....18

2010 Regional Junior Show Sites.....19

2010 Scholarship Application Available On-Line.....19-20

Regional Junior Show Eligibility Requirements.....21

2010 Dorset Ewe Futurity Update.....21

Letter From NJDA President.....21

Spring Dorset Sales Results:

Ohio Dorset Sale.....22-24,26-27

Illinois Dorset Sale.....28-29

Wisconsin Invitational Sale.....29

Cornbelt National Sale.....29-30

Ohio Sale Collage.....32

NEWS WORTHY ITEMS WANTED

If you have any Dorset related news items of interest please send them to the Continental Dorset Club Office.

We need your important input to keep this newsletter up to the caliber that it has become and hopefully will remain to be.

ADVERTISERS

Klampe/ Sunny Valley Farm.....2	MGM Dorsets.....19
Midwest Stud Ram Sale.....5	Riverwood Farms.....21
Green River Farms.....6	Twin Oaks Dorsets.....25
Woodland Dorsets.....9	Ram & Ewe Farm.....27
Riverwood/Shepherd's View.....13	Reynolds Stock Farm.....29
Royal S Graphics.....14	Huntrods Dorsets.....30
Lauden Acres.....15	Ewephoric!.....31
Superior Farms.....16-17	

CONTINENTAL DORSET CLUB BOARD OF DIRECTORS 2009-2010

President - Mike Galleher
Great Lakes Director

6000 CR 100

Mt. Gilead, OH 43338

Phone: (419)946-4582

Vice President - John Monahan
Western Director

4324 Spring Hill Rd

Petaluma, CA 94952

Phone: (707)778-7593

Eastern Director

Melanie Barkley

9027 Hyndman Rd.

Manns Choice, PA 15550

Phone: (814)623-5756

Great Plains Director

Tom Diel

22490 Harvest

Morrison, OK 73061

Phone: (405)880-7485

New England Director

Alan "Hoop" Peterson

41 Bell Rd.

Leyden, MA 01337

Phone: (413)774-5134

North Central Director

Larry Hunter

135 E. Broadway

Roseville, IL 61473

Phone: (309)426-2465

Executive Secretary/Treas.

Debra Hopkins

P.O. Box 506

N. Scituate, RI 02857-0506

Phone: (401)647-4676

Fax: (401)647-4679

E-mail: cdcdorset@cox.net

www.dorsets.homestead.com

*This publication is produced
three times annually by the:*

Continental Dorset Club, Inc.
North Scituate, RI

DORSET CALENDAR

- June 18-20, 2010:** Eastern Regional Junior Show, Keystone Classic, Penn State University Livestock Arena, State College, PA. Contact: Stacy Taylor stctylr@aol.com
- June 21-26, 2010:** Midwest Stud Ram Sale, Missouri State Fairgrounds, Sedalia, MO. Contact: Sheep Breeder Sale Management Service (573)442-8257
- July 2-4, 2010:** All-American Junior Sheep Show, Michigan State University, East Lansing, MI. Contact CDC Office (401)647-4676, email: cdcdorset@cox.net, show website: www.allamericanjuniorshow.com
- July 14-18, 2010:** Western Regional Junior Dorset Show, California State Fair, Sacramento, CA. Contact: www.bigfun.com
- July 16-17, 2010:** Crossroads of the West Sale, Deseret Peak Complex, Tooele, UT. Contact: Banner Sale Management (309)785-5058 or visit website: www.bannersheepmagazine.com
- July 16-17, 2009:** New England Sale, BIG E Fairgrounds, West Springfield, MA. For entry information contact: Becky Peterson (413)624-5562 or visit website: www.nesheep.org
- July 16-18, 2009:** New England Regional Junior Dorset Show, Northeast Youth Sheep Show, BIG E Fairgrounds, West Springfield, MA. Featuring classes for both Polled & Horned Dorsets. Contact: Polled: Pat Poitras (413)283-9852, Horned: Kelly Wright (603)357-5608 or visit website: www.nesheep.org
- August 4, 2010:** Great Lakes Junior Regional Show, Ohio State Fair, Columbus, OH. Contact: Pat Myers: smyers@loganrec.com or Linda Stocker: lindastocker@centurytel.net
- August 15, 2010: ADVERTISING & INFORMATION DEADLINE** for the Fall 2010 Issue of "The Dorset Connection". Contact: CDC Office (401)647-4676, e-mail: cdcdorset@cox.net
- August 22, 2010:** North Central Regional Junior Dorset Show, Illinois State Fair, Springfield, IL. Contact: Larry Hunter (309)337-0380, email: lw-hunter@wiu.edu
- September 17-22, 2010:** Eastern States Exposition Meat Week Sheep Show with Polled & Horned Dorset Shows, West Springfield, MA. Contact: www.bige.com
- October 1-3, 2010:** Great Plains Junior Regional Dorset Show, Tulsa State Fairgrounds, Tulsa, OK. Contact CDC Great Plains Director Tom Diel (405)547-2044.
- October 8-10, 2010:** Delaware Junior Livestock Exposition, Delaware State Fairgrounds, Harrington, DE. Contact: Coulter Passwaters (302)337-3229, e-mail: cpasswaters@msn.com
- October 15-16, 2010:** New York Bred Ewe Sale, Dutchess County Fairgrounds, Rhinebeck, NY. Banner Sale Management Service (309)785-5058 or visit website: www.bannersheepmagazine.com
- November 12-19, 2010:** National Dorset Shows, North American International Livestock Exposition, Louisville, KY. Open Dorset Shows will be Tuesday, Nov.16th starting at 8:00 AM with Horned Dorsets showing first followed by the Polled Dorsets. Contact for entry information N.A.I.L.E (502)595-3166 or web site: www.kyfairexpo.org

DORSET PROMOTIONAL ITEMS AVAILABLE

- Dorset Baseball Caps:** Cotton twill available with either a embroidered Polled Ram Head or Horned Ram Head. Horned hat colors: Maroon with khaki bill or Forest Green with khaki bill. Polled hat colors: Sage Green or Chocolate Brown. **Cost is \$15.00 which includes shipping & handling.**
- History Book of The Continental Dorset Club & The Dorset Sheep:** This book is 186 pages containing over 300 photos of Dorsets and those who have led the breed. **Cost is \$15.00 includes shipping & handling.**
- Registration Paper Three Ring Binder:** An 11" x 8 1/2" green vinyl covered 1" wide three ring binder with 10 sheet separators to get you started! CDC logo on front cover. Holds up to 100 sheets. **Cost is \$10.00 includes S & H.**
- Ram Head Decals:** Polled or Horned ram head available in two sizes. Large 12" diameter and small 6" diameter. **Cost is \$6.00 for the large decal and \$4.00 for the small decal.**
- Magnetic Bumper Sticker** featuring the CDC Logo and the phrase: "The Breed for all Seasons....The Breed for all Reasons". **Cost is \$2.00 each.**
- NEW Plastic Travel Bag for Carry-On Liquid Items:** Zippered 8" X 8" Clear Plastic Bag with CDC Logo for air travel carry-on liquid items. **Cost is \$3.00 which includes shipping & handling.**

SEND YOUR PAYMENT TO:

CDC, P.O. Box 506, N.Scituate, RI 02857

SELLING QUALITY...

Polled & Horned Dorsets

SHOW: 1:00 PM ~ TUESDAY, JUNE 22

(Horned Dorsets Show Between Polled Rams & Ewes)

Brad Gillmore, Judge

SALE: 4:30 PM ~ FRIDAY, JUNE 25



2009 Grand Champion September Ram Lamb from Ohio sold at \$3,200 to Pennsylvania.



Grand Champion Yearling Ewe from Ohio sold into Oklahoma at \$4,750 in the 2009 Sale.



Grand Champion 2009 Wether Sire February Ram Lamb from Kansas sold at \$2,200 into Indiana.

15 BREEDS

TUNIS
TEXELS
DORPERS
SUFFOLKS
KATAHDINS
COLUMBIAS
HAMPSHIRE
MONTADALES
CORRIEDALES
SHROPSHIRE
SOUTHDOWNS
RAMDOUILLETS
POLLED DORSETS
HORNED DORSETS
NATURAL COLORED

Featuring
4
NATIONAL
SALES

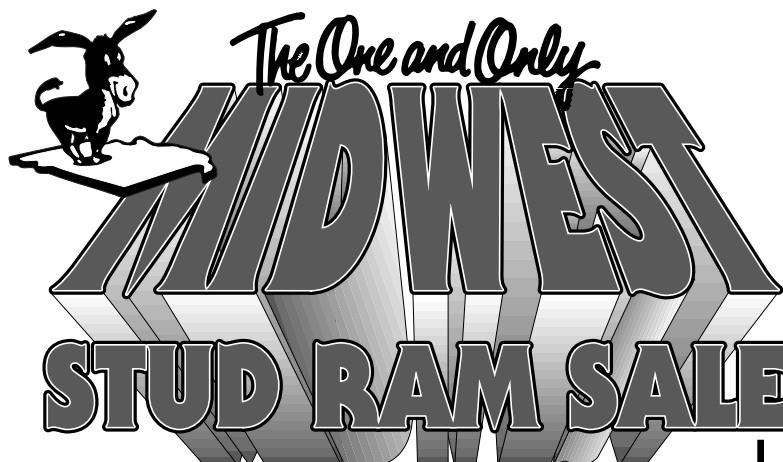


\$2,000 Grand Champion Horned Dorset Spring Ewe Lamb from Virginia sold into Indiana.



SHOW: 7:00 PM ~ WEDNESDAY

SALE: 7:00 PM ~ THURSDAY



America's Greatest Sheep Sale!

JUNE 21 • 26

MISSOURI STATE FAIRGROUNDS

SEDALIA

3000 REGISTERED
RAMS & EWES
from approximately 40 States!

Can't Attend the Sale??

View the auction live! Bid online...you're ringside right at your own desk! Visit our website...for more information and registering to bid!

DVAuction Broadcasting
Real-time Auctions
www.dvauction.com

Call Dan Broz @ 402/649-3172
or DV Auction @ 402/474-5557



SHOW:
7:00 AM
THURSDAY

SALE:
8:00 AM
SATURDAY

Dorsets, Shropshires & Club Lambs Show Wednesday Evening...about 7:00 pm... Marvin Ensor, Judge.

Dorset Wether Sires & Dams Sell Friday Evening following the Dorset Breeding Sheep Sale.

Check these Websites for added information on these Sales...
www.sheepsales.com or www.breedersworld.com

Midwest Club Lamb Sale
Wethers Only
Saturday Morning

Contact
Us For
Additional
Information

Sheep Breeder
Telephone 573/442-8257 - Fax 573/874-8843
PO Box 796 - Columbia, Missouri 65205-0796

**Sale
management
service**

continued from cover

CDC President 2006-2007 was presented with his appreciation plaques. John Monahan, retiring West Region Director was not present but John will be presented with his appreciation plaque at a later event. Thanks to both Tom and John for their service to the Continental Dorset Club. All the National Sale Champion and Reserve Champion Plaques were presented to the consignors. The 2009 Downsborough Sire of the Year Keeper Plaque was presented to Eric Bruns shepherd at Riverwood Farms for their stud ram "Dow Jones" Saylor Twin Oaks 615.



CDC Director Melanie Barkley presenting Eric Bruns-Riverwood Farms with the 2009 Downsborough Sire of the Year Keeper Plaque for "Dow Jones" Saylor Twin Oaks 615.

Before the sale on Saturday, several presentations were made. The Ohio Dorset Association presented their 2010 scholarships to Jenna Davis, Kayla Gerfen, Kelsey Saylor and Kara McCarthy. 2009 Ohio Dorset Queen Kayla Gerfen crowned the newly selected 2010 Ohio Dorset Queen Kelsey Saylor. Tyler Myers and the Ohio Junior Dorset Association



CDC President Mike Galleher presenting retiring Great Plains Director Tom Diel with his CDC president's plaque.

presented their breeder support award to Jeff Bradford of Bradford Farms.

Congratulations to all on a job well done!

The Townsend Best Consignment honors were presented during the sale. The Best Horned Dorset award went to Cassell Horned Dorsets, Wytheville, VA and the Polled Dorset Award was present-



Longtime sale consignor Warren Squires showing at the 50th Ohio Dorset Sale with his son Mike and grand daughter Sally.

ed to Superior Farms, Yukon, OK. Congratulations to these two farms on this special award!

The sale was another strong sale at Ohio. The complete sales results appear on pages 22-27 of this newsletter. The Horned Dorset had a sale average of \$638.46 on 65 head sold posting a new high gross for their sale. The record ewe price of \$3,000 was tied by a fall ewe lamb bought by Christina Shotts, Quincy OH from Lance Thompson, Carrollton, OH. The yearling ewe classes posted very high



Tyler Myers of the Ohio Junior Dorset Association presenting Jeff Bradford-Bradford Farms with an appreciation award of support to their association.

averages of over \$800. There were 27 horned ewe lambs nominated for the futurity program and 14 of those were tattooed by their new junior owners for participation in the program.

The Polled Dorsets did have a decrease in sale average but still tied last year's sales gross. 225 head of Polled Dorsets grossed \$194,700.00 for a strong \$865.33 average. The quality brought out was exceptional once again and probably the best set of yearling ewes put together at a sale in recent memory. Of the 76 Polled ewe lambs that were nominated for the futurity program 31 of them were tattooed by their new owners. Another great start for the Dorset Ewe Lamb Futurity program!

All in all it was a very successful event for the Dorset breed and a great start to 2010!



2009 Ohio Dorset Queen Kayla Gerfen crowning the 2010 Ohio Dorset Queen Kelsey Saylor, Belle Center, OH



GRF 09-22 - 1st Spring Ewe Lamb at the 2009 California State Fair. Typical of the fine Polled Dorsets we breed, show and sell!

Johnnie Johnson
530/979-0028

25265 Carlsbad Ave. • Davis, CA 95616
johjohnson@excite.com

Thanks To Our Buyers At The National Sale!

Kristina Repasky
Prior Lake, MN

Kristina purchased our Spring Yearling Ewe shown at left.

Sean Eldridge
Winters, CA

Sean selected a real nice Fall Ewe Lamb for his flock.



FEATURE ARTICLES

2010 CDC ANNUAL BOARD OF DIRECTORS MEETING MINUTES

The meeting was called to order at 3:16 PM on March 18, 2010 by President Mike Galleher. Directors Larry Hunter, Tom Diel, Melanie Barkley, and Hoop Peterson were in attendance. Western Director John Monahan was on speaker phone. Director-elects for Great Plains Region: Casey Sidwell and Western Region: Johnnie Johnson, and CDC Exec. Sec./Treas. Deb Hopkins were also present.

- Secretary Minutes: Deb Hopkins presented in writing the minutes from the 2009 CDC Fall-Teleconference Meeting held December 10, 2009. Melanie Barkley moved to accept the minutes as written. Tom Diel seconded. Motion passed.

-Treasurer's Report: Deb Hopkins presented the financial report for the fiscal 2009-2010 year to date as of March 4, 2010. Total income is \$28,813.05, total expenses is \$54,031.30 for a current net cash loss of \$25,218.25. Account balances - Checking Account: \$1,970.69; Savings Account: \$25.00; CD: \$24,859.74; Money Market: \$12,067.67; Junior Association \$9,216.53 for total cash assets of \$48,139.63. Tom Diel moved to accept the treasurer's report. Hoop Peterson seconded. Motion passed. Deb Hopkins also presented a proposed budget for 2010-2011 for the board to review as it goes through the meeting. Deb Hopkins also presented the accountants annual report for the 2008-2009 fiscal year for the director's records. It was noted that the CDC lost \$409.90 in cash flow last year.

-CDC Stats: Deb Hopkins presented the 2009-2010 statistics to date. As of February 28, 2010, 1417 head have been registered and 734 head have been transferred. The registrations are down 486 head from the same period last year and the transfers are down 171 head from the same period last year.

-Correspondence: Two letters from Bruce Ankeny and Kathy Soder were presented to the board for their information.

COMMITTEE REPORTS:

-Dorset Futurity: Melanie Barkley and Hoop Peterson didn't have anything new to report but did present the 2010 Futurity Program Budget. Deb will get the information on the Ohio Sale nominations to Hoop for reporting at Friday's Annual Meeting.

-Breed Standard: It was reported that the breed inspections at Ohio were going along smoothly though some hoof and mouth color was found. Tom Diel moved to

accept Evan Snyder to the Certified Judges List. Larry Hunter seconded. Motion carried. Melanie Barkley reported on the development of the breed standard educational manual. More pictures are needed of both good and bad traits. They are working on the project and are requesting breeders to send pictures in. A video/power point presentation was also discussed and the board would like to work on that after the manual is completed and have it available on the CDC website. The results of the breeders survey was discussed and because of the low number of responses the board was not confident in the data received to make any major decisions. The board would like to attempt another survey in the future to keep a pulse on breed issues.

- Production Dorset Committee: Melanie Barkley reported on the recent telephone conference they had. They requested that production data be put on the registry certificates to encourage performance data as a selection tool. Perhaps even have a performance division at the national sale. Since the CDC is working on developing a registry program now would be the time to incorporate such data. Tom Diel moved to incorporate into the computer registry program performance data to be put onto registration papers through the Lamb Plan program. Melanie Barkley seconded. Motion passed. Melanie will meet with the committee to come up with what kind of performance data they would like to appear on the registration certificates and how that data will be generated to be put on the certificates.

-Dorset Breeder Excellence Program: Mike Galleher reported there were no applicants for 2009 but the board would like to continue with this worthwhile program for 2010 and to encourage Dorset breeders to apply for the awards.

-Newsletter and Website: Deb Hopkins reported that the 2010 Winter newsletter had great advertising support and it netted a small income of \$216.76. The spring/summer newsletter will be out before Sedalia. The website seems to be going well also. Melanie Barkley moved that pay pal be set-up for Dorset online registration for an additional cost. Tom Diel seconded motion carried. Deb reported that she has started up a CDC fan page on Facebook to get out quick announcements and to communicate more with the younger breeders though a lot of older folks are on Facebook also.

-All-American Junior Show: Deb Hopkins reported that the 2010 All-American Junior Show will be July 1-4, 2010 at the Michigan State University,

East Lansing, MI. The Dorset exhibitors and their families will once again have a lunch on Saturday sponsored by the Junior Dorset Association. Jeremy Etzler and Jacob Reister will be judging. The Michigan folks are doing a lot of extra food activities and are planning a tour of the MSU Campus. Deb would also like to thank Riverwood Farms and Cassell Horned Dorsets for donating ewe lambs this year for the show. A class sponsorship list will be passed around tomorrow to get additional sponsors for the show. The 2011 show will be in Delaware.

-National Junior Association: The junior association is planning on having an informal meeting at the All-American and their Annual Meeting in Louisville in November. They would also like to do some extra fundraising to help out the scholarship fund and are looking for ideas.

OLD BUSINESS:

-Ideal Statue: John Monahan has spoken with Carol Herdin and reported that a minimum of 25 statues would be cast for \$1500, then after that cost would be \$60 for each statue. 25% of the cast would need to be put down. Melanie Barkley moved to do a Polled Dorset Ewe with the fore mentioned stipulations. John Monahan seconded. Motion carried. Pictures will need to be submitted to her and someone to work with her in the development of the statue.

-Dorset Wether Registration: Larry Hunter moved to remove the motion that "Dorset wethers will be required to be registered at CDC sponsored events." from the table. Hoop Peterson seconded. Motion carried. After much discussion the motion passed 3 to 2 and the policy will be started in 2011.

-Computer Registry Program: Deb Hopkins reported that Frank Tiffany has a program to demonstrate to the board tomorrow. Cost will be \$5,000 initial fee and the additional cost for support and updates. After the board meets with Frank on Friday action will be taken at the reconvening of the board after the annual meeting.

-Redistricting of CDC: After discussion no action was taken at this time.

NEW BUSINESS:

-2010 NAILE National Dorset Shows:

Deb Hopkins reported that the judge names were submitted to NAILE in the following order: Polled: 1st-Steve Taylor, 2nd-Steve Myers, 3rd-Mark Chapman; Horned: 1st-Billy Wade, 2nd-Dick Kuzemchak, 3rd-Tim Fleener. There was discussion at the NAILE sheep committee meeting once again on how to shorten the Junior Show

continued on page 8

FEATURE ARTICLES, cont.

to get the kids out earlier on Sunday night. Options are being looked into.

-2011 CDC Director Elections: The Eastern and North Central will be electing directors next winter. Melanie Barkley and Larry Hunter will both be retiring from the board as they have served their second term. Nominating committees will need to be made known to the office for announcement in the 2010 fall newsletter.

-2011 Regional Junior Show Sites: The regional show junior tentative show sites for 2011 are:

*Great Lakes – Kentucky State Fair in August

*New England - Northeast Youth Sheep Show in July

*North Central – Illinois State Fair in Aug.

*West – California State Fair in July

*East – possibility of being held in conjunction with All American in Delaware

*Great Plains – unknown at this time

-2011 Annual Meeting & National Sale:

After much discussion on the Illinois Dorset Sale being a possibility, and since the board would like to be guaranteed an April date for the sale at a location other than the Champaign facility, which could not be presented at this time, the board voted to have the 2011 National Sale at the Midwest Stud Ram Sale. The CDC board will entertain the invitation from New England and Illinois for the 2012 National Sale at a later date.

-Election of 2010-2011 Officers: Melanie Barkley moved Mike Galleher as President. Larry Hunter seconded. Motion carried. John Monahan moved Melanie Barkley as Vice President. Larry Hunter seconded. Motion carried.

-Budget: Melanie Barkley moved to accept the 2010-2011 Budget with corrections as presented in writing. Larry Hunter seconded. Motion carried.

Tom Diel wished the CDC and board well in the future. Mike Galleher thanked both Tom Diel and John Monahan for their service to the CDC Board of directors.

Larry Hunter moved to recess the meeting and reconvene after the annual meeting. Hoop Peterson seconded. Motion carried. Meeting recessed at 7:20 PM.

Meeting reconvened at 7:46 PM Friday, March 19, 2010. Larry Hunter moved that the CDC purchase and implement the computer registry program Frank Tiffany has developed for \$5000. Melanie Barkley seconded the motion, Motion carried. More discussion on the Ideal Statue development as there was some confusion on how much financial commitment would be required upfront. Deb Hopkins will contact

the Southdown Association to find out details before we proceed.

Larry Hunter moved to adjourn the meeting. Tom Diel seconded. Motion carried. Meeting was adjourned at 7:55 PM.

*Respectively submitted,
Debra Hopkins
CDC Executive Sec./Treas.*

2010 CDC ANNUAL MEMBERSHIP MEETING MINUTES

The meeting was called to order by President Mike Galleher at 7:03 PM on March 19, 2010 following the BBQ dinner hosted by the Ohio Dorset Breeders Association. Mike Galleher introduced the directors and directors elect Johnnie Johnson and Casey Sidwell. President Galleher also thanked the Ohio Dorset Association for hosting the 2010 National Dorset Sale and welcomed everyone that was present.

Executive Sec/Treas. Deb Hopkins presented in writing the minutes from the 2009 Annual Membership Meeting that was held at the Nugget All-American Sale, Sparks, NV on May 28, 2009. Brian Barkley moved to accept the minutes as written. Barbara Cassell seconded. Motion Carried.

Deb Hopkins presented the financial report for the fiscal 2009-2010 year to date as of March 4, 2010. Total income is \$28,813.05, total expenses is \$54,031.30 for a current net cash loss of \$25,218.25. Account balances - Checking Account: \$1,970.69; Savings Account: \$25.00; CD: \$24,859.74; Money Market: \$12,067.67; Junior Association \$9,216.53 for total cash assets of \$48,139.63. Barbara Cassell moved to accept the treasurer report as presented. Lynn Laudenslager seconded. Motion carried.

Deb Hopkins presented the 2009-2010 statistics to date. As of February 28, 2010, 1417 head have been registered and 734 head have been transferred. The registrations are down 486 head from the same period last year and the transfers are down 171 head from last year.

Deb Hopkins also read the final stats for 2008-2009. There were 7211 head registered (down 223 from last year) and 3545 head transferred (down 135 head from last year). The top fifteen states in registrations were: 1)Pennsylvania-789 head; 2)Ohio-707; 3)Indiana-607; 4)Illinois-586; 5)Iowa-559; 6)Minnesota-485; 7)California-389; 8)Virginia-329; 9)Oregon-298; 10)Oklahoma-270;

11)Wisconsin-269; 12)Missouri-198; 13)Nebraska-192; 14)New York-165 and 15)South Dakota-142. The 2008-2009 top fifteen registrars were: 1)Jeffrey A. Hunter, Lafayette, IN-141 head; 2)Karen E. Nichols, Corvallis, OR (Horned)-137; 3) Paul R. Cassell, Wytheville, VA (Horned)-121; 4)Superior Farms, Yukon, OK-115; 5)Roger Huntrods & Sons, Collins, IA-104; 6)Olivia Waggoner, East Berlin, PA-98; 7)K Bar K-Ken & Kathy Soder, Petersburg, PA-95; 8)Virginia Tech, Blacksburg, VA-77; 9)TIE-Riverwood Farms, Powell, OH-67; 9)TIE-H.F. Sanford & Sons, Faribault, MN-67; 11)Lauden Acres, Dalmatia, PA-66, 12)U.S. Meat Animal Research Center, Clay Center, NE-61; 13)Spilde Brothers-Kent & Dan, Stoughton, WI-57; 14)Lance Thompson, Carrollton, OH (Horned)-56 and 15)Brent Wastenev Sheep Farm, Shannon City, IA-54.

COMMITTEE REPORTS:

-Futurity: Hoop Peterson reported that 26 Horned ewe lambs and 76 Polled ewe lambs have been nominated at the National Sale and thanked the group nominators of Cassell Horned Dorsets, Superior Farms, Riverwood Farms and Olivia Waggoner for their support. He reminded junior owners to get their yearling ewes re-nominated for the yearling ewe futurity by May 1st. The committee is also looking into the possibility of doing a breeder ewe lamb futurity for purchases off the farm directly and would like member input.

-Breed Standard Education/Certified Judges List: Tom Diel announced that Evan Snyder had been added to the certified judges list and for members to nominate judges for the list. Melanie Barkley spoke on the development of the breed standard education manual that the committee has been working on. She requested that if breeders had any photos of good and bad traits to please submit them to her for the manual.

-Production Dorset Committee: Melanie Barkley also reported that they had a teleconference meeting in January. They are promoting the possibility of getting performance data added to registration certificates and felt with the development of the new computer registry program that now would be the time. She also announced that NSIP is incorporating its data into Lamb Plan as it has additional features and a quicker turn around time of data produced.

-National Junior Dorset Association: Junior Association President Troy Longenecker reported that the junior association is planning a BBQ and informal meeting at the All-American in July. He

encouraged junior exhibitors to participate in the All-American and the regional junior shows coming up this summer and early fall. He also encouraged junior members to participate in the futurity ewe programs and for the older juniors to apply for the 2010 scholarship.

-Newsletter and Website: Deb Hopkins reported that the 2010 Winter newsletter had great advertising support and it netted a small income of \$216.76. The spring/summer newsletter will be out before Sedalia. The website seems to be going well also. Deb reported that she has started up a CDC fan page on Facebook to get out quick announcements and to communicate more with the younger breeders though a lot of more mature folks are on Facebook also.

-All-American Junior Show: Deb Hopkins reported that the 2010 All-American Junior Show will be July 2-4, 2010 at the Michigan State University, East Lansing, MI. Jeremy Etzler and Jacob Reister will be judging. The Michigan folks are doing a lot of extra food activities and are planning a tour of the MSU Campus. Deb would also like to thank Riverwood Farms and Cassell Horned Dorsets for donating ewe lambs this year for the show. A class sponsorship list has been passed around and there are still a few spots that need filling in.

OLD BUSINESS: None brought up.

NEW BUSINESS:

-2010 NAILE National Dorset Shows:

Deb Hopkins reported that the judge names were submitted to NAILE in the following order: Polled: 1st-Steve Taylor, 2nd-Steve Myers, 3rd-Mark Chapman; Horned: 1st-Billy Wade, 2nd-Dick Kuzemchak, 3rd-Tim Fleener. The Horned Dorset will show first followed by the Horned Dorsets. The show should be early in the week.

-National Sale Rotation: Larry Hunter reported that the 2011 National Dorset Sale, for both Polled and Horned Dorsets will be at the Midwest Stud Ram Sale the last week in June.

-Board Meeting Announcements:

President Mike Galleher announced the CDC will require Dorset wethers to be registered at CDC sponsored events starting in 2011. The CDC is also pursuing the development of an ideal Polled Dorset Ewe statue. The Dorset Breeder Excellence program had no entries for 2009 and strongly encouraged breeders to participate on 2010. The entry deadline will be Dec. 31, 2010. Mike also reported that the CDC is developing their own registry program thanks to Frank Tiffany and it will be put into operations this fall that will also feature performance data. The 2009 membership surveys have been reviewed. Unfortunately due to the small

number of surveys returned no definite trends could be determined but the opinions submitted were greatly appreciated. The 2010-2011 Officers elected were: President Mike Galleher and Vice President Melanie Barkley.

-Award Presentations: President Galleher announced the Champion and Reserve Champions from the National Sale show from earlier in the day and Melanie Barkley presented plaques. He also announced the 2009 Downsborough Sire of the Year keeper plaque that was presented to Riverwood Farms for "Dow Jones" Saylor Twin Oaks 615. President Galleher presented Tom Diel, the retiring director from the Great Plains Region, with a plaque of appreciation and also his president plaque for his presidential year of service from 2006-2007. John Monahan, Western Director, was not present but he is also retiring from the board and his appreciation plaque will be presented to him at a West Coast event. Thank-you to both Tom and John for their service to the Continental Dorset Club.

Barbara Cassell moved to adjourn the meeting. Evan Snyder seconded. Meeting was adjourned at 7:45 PM.

**Respectively submitted,
Debra Hopkins
CDC Executive Sec./Treas.**

Thank You to Our National Sale Buyers

McDaniel Ranch – Greenfield, Indiana

for selecting this stud ram for your breeding program

★ Congratulations to ★
Mason Roalsvig
of Amherst, NY for winning
the 2009 New England
Region Ewe Lamb Futurity
with Woodland 128,
purchased at the
2009 Ohio Dorset Sale

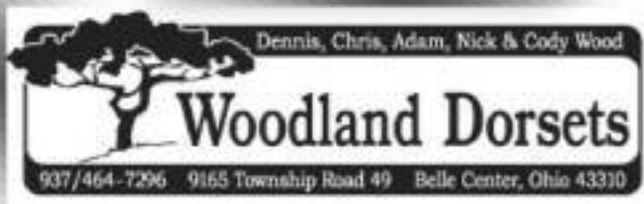


Also thank you to

Justin Fruechty
South Dakota

•
Ram and Ewe Farm
South Solon, Ohio

•
Tyler Lobdell
Illinois



We have "Full Throttle" ewe lambs for sale at the farm and they look great! Come see for yourself!



LETTER FROM CDC PRESIDENT MIKE GALLEHER

Spring has arrived early here in central Ohio. After a very snowy winter for our area, the warm weather was welcome change to most people around here. Spring also brings the beginning of the sale season starting with our National Show and Sale at the Ohio Dorset Sale in Eaton, Ohio last month. Ohio celebrated the fiftieth anniversary of the sale.

Although the sale averages were down from the previous year in both the horned and polled, there were many good sheep sold. The horned consignment set a record for the number of head sold in the sale. The weather was much better than most years. I also had the opportunity to attend and sell at the Illini Sale in April. I thought that a good set of sheep sold well. I was encouraged by the number of young people buying at the sale.

Several exciting decisions were made at the CDC Board of Directors meeting. Frank Tiffany of New York, a former director and the webmaster of our webpage, showed the board a new registry program that he is developing for the club. The board is also working with the production Dorset committee and Frank to include production information on the registration papers. Another program that is being explored is to expand the ewe lamb futurity to include animals sold at the farm. At the present time only ewe lambs sold at sales can be nominated. Finally an ideal ewe statue is being developed to be used as a fund raiser for the club similar to the program that the Southdown Association has had for a number of years. The Polled Ewe will be the first in what we hope is a series of statues.

This was the last board meeting for two members. Tom Diel and John Monahan will be going off the board later in the year. Thanks to Tom and John for their years of service on the board. New board members are Johnny Johnson of California representing the West region and Casey Sidwell of Colorado representing the Great Plains region. Welcome to the board.

I hope to see you at a sale or show this summer!

Mike Galleher, CDC President

The DORSET Connection

ADVERTISING RATES

Published three times per year by the Continental Dorset Club, Inc.

Ad Deadlines

Spring/Summer Issue: Ad copy and materials due April 1st (May 15th mailing date)

Fall Issue: Ad copy and materials due August 15th (October 1st mailing date)

Winter Issue: Ad copy and materials due December 1st (January 15th mailing date)

Payment

Payment for all advertising due at time of ad placement. Additional costs for extra artwork or special effects will be billed later. Add \$15 for each photo, **No Proof Pictures Accepted – Only Prints or Digital Photos (high resolution)**. No discounts on photos. Print-ready ads submitted on CD (Mac formatted) or sent via e-mail are accepted and will receive a 15% discount from listed base prices.

Contracts

Advertising contracts are also available. Advertisers will receive an additional 10% discount for yearly contracts. Ads must be placed in three consecutive issues and paid in full at the time the first ad is placed. No limitation on ad size.

NOTE: The Continental Dorset Club, Inc. reserves the right to reject any advertising or copy that may be objectionable.

Send all advertising materials to:

DALE SMITH

Advertising Editor/Designer

17917 Brim Road • Bowling Green, Ohio 43402

Phone: 419/352-2332 Fax: 419/352-2332 E-mail: royal-s@earthlink.net

Ad Dimensions & Base Prices

	2 Page Ad 16" x 9-7/8" \$460
--	---

1 Page Ad 7-1/2" x 9-7/8" \$290
--

1/2 Page Ad 7-1/2" x 4-15/16" (Horizontal) or 4-7/8" x 7-1/2" (Vertical) \$175

1/4 Page Ad 4-7/8" x 3-3/4" \$105
--

Bus. Card Ad 3-1/2" x 2" \$52 - 1 Time \$140 - 3 Times

AD PROOFS: Initial and final proofs are guaranteed to advertisers who send in ad copy and materials by the deadlines noted. Advertising copy received after deadlines will be included on a first come, first serve basis, time and space permitting.

FEATURE ARTICLES, cont.

NORTHEAST DORSET ASSOCIATION HOLDS SPRING OPEN HOUSE AT ORCHARD VALLEY FARM, LEYDEN, MA

On an unpredictable spring day in New England on April 25th, members of the Northeast Dorset Breeders Association gathered at Orchard Valley Farm up in the Berkshire foothills of Western Massachusetts in Leyden. Orchard Valley Farm is the home of Hoop & Becky Peterson, their daughter Karin and her fiancé Dick. Hoop is our current New England CDC Director. They played very gracious hosts as several members of the New England Dorset family gathered.



Becky and Karin Peterson assist in steady-ing a fall ram lamb for Matt Parsons to scan its loin eye area and fat cover thickness.

Even though many of us traveled through rain to get there, by the time we arrived at the farm the skies were much brighter. Matt Parsons, livestock and grain producer from Hadley, MA, put on a loin eye scanning demonstration on several of the farms' Dorsets. Matt serves as the BIG E Market Lamb Show Supt. and does scanning each fall for the event. Thanks to Alice Newth of UMass, who brought along the newly acquired ultrasound machine at UMass in Amherst for our use. UMass is one of the three New England Universities



The brood ewes enjoying the first grass of the spring at the Orchard Valley Farm.

that run Polled Dorsets on their school farm.



Members of the Northeast Dorset Breeders Association enjoying the tour of the farm given by Becky. Here they are looking at the brood ewe flock on spring pasture. The ewes had just been exposed for fall lambing so several green marked rumps were observed in the group.

Matt scanned different body types of lambs showing us the physical differences and how it translates to the scanning. It was very educational for the meeting attendees. Becky then gave us all a farm tour. Orchard Valley Farm is also the home of Southfield Corporation Polled



An impressive set of fall ewe lambs at Orchard Valley Farm and Southfield Dorsets

Dorsets so there were several Dorsets to look at. They even had all the fall lambs cut out to look their best!

After the educational program and farm tour the group partook in a lamb stew lunch and association informal meeting. The group had plans to be ironed for the upcoming summer activities in New England. The NEDA gives a ewe lamb away each year to a deserving youth to encourage new Dorset owners in the area or to help upgrade a current Dorset youth's breeding program. They also co-host the New England Regional Junior Show at the Northeast Youth Sheep Show held in July at the BIG E Fairgrounds in conjunction with the New England Sale. After a great educational and social gathering folks headed back home in blue skies.



Becky also trains and raises Border Collies. One of her very capable dogs brings down the flock for the farm visitors to see.

DORSET COMMERCIAL CONNECTION

Preventing Internal Parasites Through Pasture Management Principles

by Melanie Barkley

Penn State Extension Educator

As we all know, managing our sheep to control internal parasites can be quite challenging at times. Many of the products we use to deworm have lost their effectiveness and so we need to turn to other methods to prevent infections from internal parasites. Here are a few things to consider from a pasture management perspective to prevent internal parasites.

Divide your pastures into sections for rotational grazing. Most parasite larvae will be found in the first two to three inches of the pasture plants. By rotating sheep out of a pasture before the grass reaches three inches in height, we can prevent many of those parasites from being ingested by the sheep. A good rule of thumb is to have about 10 sections in your pasture. These sections should be grazed off in about four to five days at the maximum. (However, this can be longer during hot and dry weather.) The reasoning behind this is that once a parasite egg has been passed in the feces, it will take about four to five days for that egg to mature and hatch into a larva that can infect a sheep.

Another point is to allow each section to rest at least 30 days before re-grazing. This allows time for any larvae that are present in the field to use up their energy reserves and die. Keep in mind that this time frame can change depending on the density of the pasture plants and the moisture levels on the grasses from rain, humidity

and/or dew.

Allowing pastures to grow for 30 days or more in the spring can result in forage that will become too mature for grazing. Harvesting this forage for hay can decrease parasite larvae present on pastures. Once the hay is harvested, the remaining larvae are subjected to drying out from the sun, which will help to kill the larvae.

Another option is to seed your pastures with plants that contain tannins. According to Dr. Steve Hart from Langston University, the tannins interfere with parasite egg hatching and the development of larvae to an infectious stage. Two common plants that contain tannins include birdsfoot trefoil and sericea lespedeza. Check with your local Cooperative Extension Office for more information on adaptation of these species to your local area. In some areas sericea lespedeza can be very invasive, so you may need to be careful with where it is planted!

A final option to consider is to graze sheep with other animal species that will break the life cycle of the parasite. Cattle and horses are excellent for co-grazing because parasites that infect sheep will not be able to complete their life cycle in cattle or horses. Co-grazing works well by grazing sheep either before or after the cattle or horses. This allows one species to clean up the parasites left behind by the first species to graze the pasture. Co-grazing with goats will not work however because sheep and goats share some of the same parasites.

Using more than one method for preventing internal parasites will help to increase the success of your results. One last comment I might make is to pay close attention to the internal parasite treatments on the sheep in your flock. Maintain treatment records for all sheep in the flock. For any sheep that need treated more often than others, you should consider culling them from the flock. There is a good chance that these sheep are carrying a majority of the parasites and are the culprits for re-infecting the flock. Over time, culling these carrier sheep will help to build genetic resistance to internal parasites in the remaining sheep and decrease the need for deworming.



Co-grazing sheep with beef cattle can help to break the life cycle of internal parasites on pastures. Follow one species with the other species through a rotational grazing system.

2010 Dorset Excellence Program

**Applications available at:
www.dorsets.homestead.com**

**Entry Deadline:
December 31, 2010**

Make your plans to apply for these prestigious awards and not only have your breeding program highlighted in Dorset promotion but also receive some very nice hardware and cash awards!!



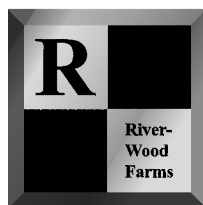
Proudly presenting...

“Premium Pickle”

RF 5409 RR

Riverwood Farms extends their thanks to the Passwaters Family for their purchase of half interest in him!

*Look for "Premium Pickle" offspring from
both of these flocks in the near future!*



**RIVERWOOD
FARMS**

Dorsets • Dorpers • White Dorpers

JAMES KLINGBEIL, Owner
1000 West Powell Rd. • Powell, Ohio 43065
Barn: 614/885-6268 • Fax: 614/885-2851
riverwood_farms@msn.com • www.riverwoodfarms.com

ERIC BRUNS, Shepherd • Cell: 614/403-1436
TOM HENRY, Farm Manager DAVE HARMANN, Associate
SHAWN KENNEDY, Assistant Farm Manager

Shepherd's View

POLLED DORSETS • ROMNEYS • HEREFORDS

THE PASSWATERS FAMILY

COULTER, CHARLOTTE, WILL
& EMILY PASSWATERS
9097 Shepherds View Lane • Bridgeville, Delaware 19933
302/542-6061 • charpasswaters@gmail.com

JOHN & HEATHER PASSWATERS
302/542-8077 • john@passwaterslawn.com

ANNOUNCEMENTS

DORSET WETHERS TO BE REGISTERED FOR CDC SPONSORED EVENTS

Starting in 2011 the CDC will be requiring that Dorset wethers be registered in CDC sponsored events. This would include the All American Junior Show, the National Junior Dorset Shows in Louisville and the six Regional Junior Dorset Shows around the country.

The CDC plans on continuing to support these market lamb shows with funding from the money generated from these registrations. The CDC will provide registration certificates to wethers and they will be designated as such on the papers.

The CDC also sponsors several market lamb shows awards around the country, if the Grand Champion Overall is a purebred Dorset the CDC will pay \$500 and \$250 for Reserve Champion. Starting in 2011 the registration paper information will need to be provided in order to collect these awards. The CDC looks forward to being able to provide continuing support of the Dorset Market Lambs shows around the country!

GREAT PLAINS & WESTERN CDC DIRECTOR ELECTIONS RESULTS

This past spring the CDC held director elections in the Great Plains and Western Regions. Great Plains Director Tom Diel has served two terms on the board for the CDC and retired from the board. Casey Sidwell of Gill, CO has been elected to serve as the Great Plains Director starting this September.

The Western Region elected a new director in Johnnie Johnson of Davis, CA. Johnnie will be replacing current director John Monahan, Petaluma, CA. Many thanks go to John and Tom for their service on the CDC Board.

Congratulations to Johnnie and Casey for being elected. Looking forward to working with them for the next three years on the CDC Board of Directors.

ANNOUNCING SUMMER/FALL CDC OFFICE CLOSINGS

The CDC Office remains committed to providing the best service to our breeders on registration work but due to some budget constraints we are cutting back on outside help in the CDC office. We will still be able to provide you with timely service but there are times when I will be out of the office in this busy upcoming sale and show season. Please make note of these times and plan accordingly:

-June 30- July 6, 2010- All-American Junior Show

-July 15-16, 2010 - New England Sale & New England Regional Jr. Dorset Show

-July 30- Aug 9, 2010 - Secretary's Vacation

-September 13-29, 2010 - Eastern States Exposition Sheep Show

CDC RULES GUIDE, CONSTITUTION AND BY-LAWS AVAILABLE ONLINE

The CDC Rules Guide which provides the Dorset breeder with all the information and rules about registering Dorset sheep, and membership in the CDC will be posted on the CDC website. The CDC website address is: www.dorset.homestead.com

The CDC updated Constitution and By-Laws is also available on the website. The CDC is trying to be more cost conscientious while still providing the CDC members with all the information they need. These two documents will only be posted on the website in the future. If you do not have access to the internet, please feel free to contact the CDC office and we will be happy to send you hard copies of these documents.

2010 DORSET EXCELLENCE AWARDS

The CDC encourages Dorset breeders to check out the Dorset Breeder Excellence Award program and encourages interested breeders to apply for the award. The deadline for this year's awards is December 31, 2010. The award application appears in its entirety on the CDC website: www.dorsets.homestead.com. The reason why we are promoting this program so early in the year is because pictures are a part of the application process and breeders might want to be taking some as we go through 2010.

Last year the CDC did not have anyone apply after a very successful appli-

cant year in 2008. The CDC wants to remind breeders that they can definitely re-apply if not selected.

The 2008 winners received special recognition not only in the CDC Newsletter/Webpage but in press releases sent out to National Sheep Industry periodicals besides also receiving a cash award and perpetual trophy.

The CDC would like to promote our great Dorset breeders across the entire sheep industry and this program was developed in order to enable the CDC to do so and we encourage all of those interested to apply!

THE DORSET FAMILY LOOSES BREEDERS IN RECENT MONTHS

The Dorset breed has sadly lost four of its breeders in recent months:


~Bernice Linman, Buffalo, Missouri~

~Brice Leonard, Rhodes, Iowa~

~Darrell Rincker, Stewardson, Illinois~

~Don Saylor, Belle Center, OH~

The CDC expresses its sincerest condolences and sympathies to all the members of these breeders families and only wish them the best in these sad times.



ROYAL~S
Graphic Design Services

DALE L. SMITH
Owner/Graphic Designer
royal-s@earthlink.net

Specializing in the Livestock Industry!

17917 Brim Road
Bowling Green, OH 43402
ph/fx 419.352.2332

LAUDEN ACRES

COMMITTED TO EXCELLENCE



Select Group of 2009 Fall Ewe Lambs at Lauden Acres

See Our Entries at the 2010
MIDWEST STUD RAM SALE



Special thanks to Kristina Repasky,
MN, for purchasing LA 657
1st Spring Yearling Ewe, Class 1
2010 National Dorset Sale



LA 656 (RR)



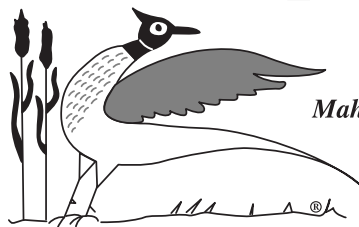
LA 661 (QR)

Both of these Yearling Ewes sell at the 2010 Midwest Sale.
Looking forward to visiting with you.

Farm Visits Are Always Welcome!

LAUDEN ACRES

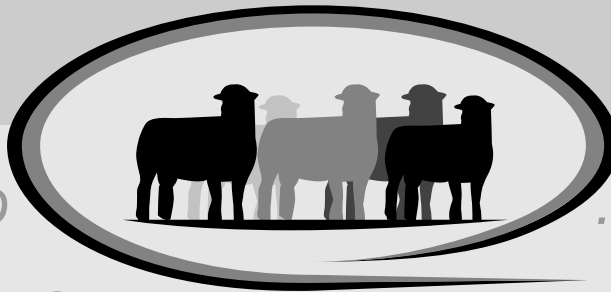
Flock Consultant
Timothy M. Hall
Narrow Lanes Dorsets
423 State Rt. 225
Dalmatia, PA 17017
570/556-6381 (Cell)



Division of
Mahantongo Game Farms
Established 1935

Lynn A. Laudenslager • 570/758-6284 (Office) • 570/847-9817 (Cell)

Flock Consultant
Dick Kuzemchak
289 South Main Street
Pleasant Gap, PA 16823
814/280-2817 (Cell)

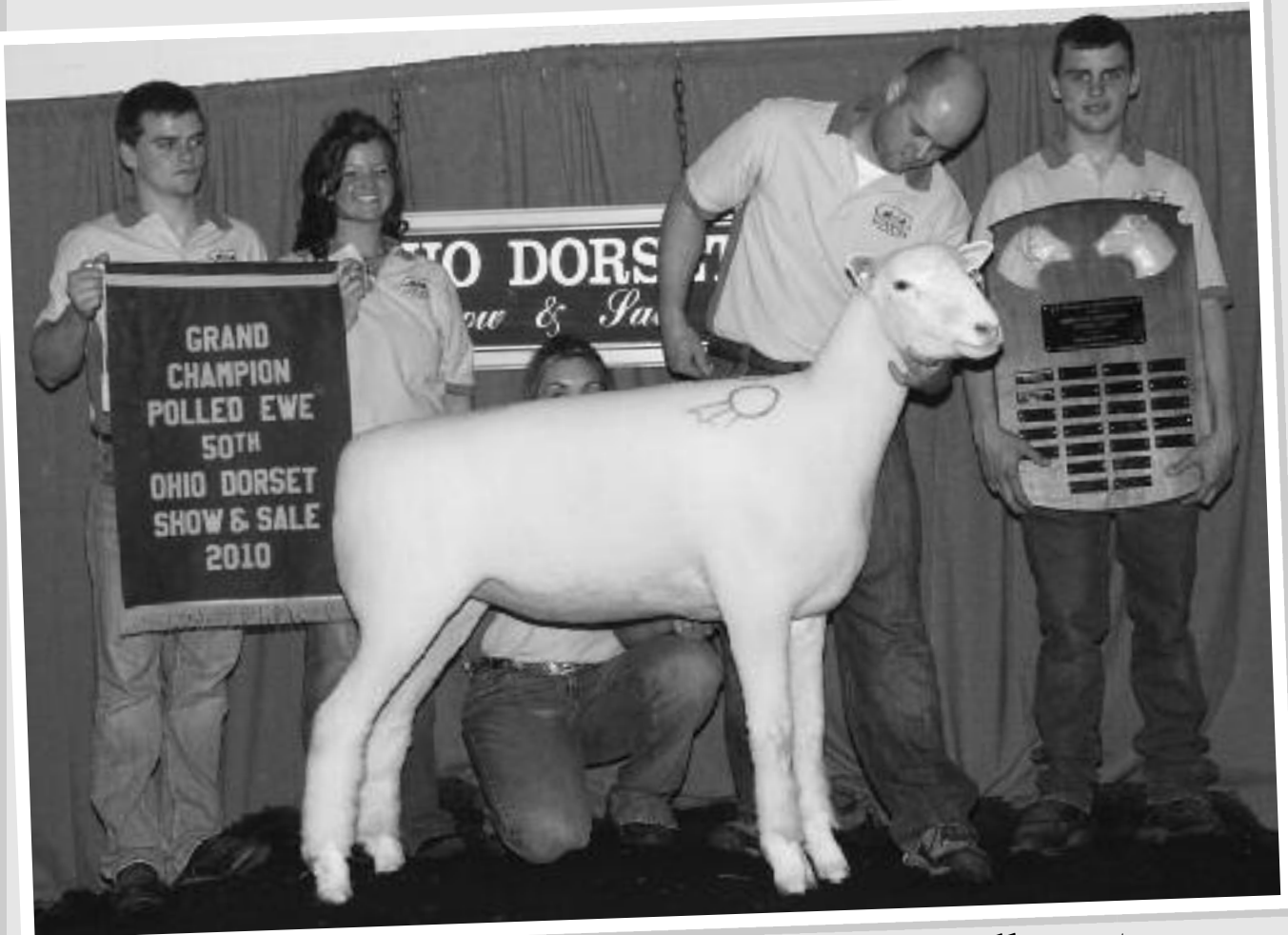


"COMMITTED TO

...EXCELLENCE"

SUPERIOR FARMS

A Huge Thanks to All Who Bid On & Bought Our Dorsets at the
2010 National Dorset Sale!



National Grand Champion Ewe & High Selling Ewe
Sold to Emily Passwaters, Bridgeville, DE.

Contact Us For All Your Dorset Ram & Ewe Breeding Needs!



1st Early Fall Ewe Lamb, Class II
...And Top Selling Ewe Lamb!
Sold to Austin Hicks, OK

Proud
Winner of The
TOWNSEND
BEST CONSIGNMENT
AWARD!



2nd Spring Yearling Ewe, Class II
Sold to Caleb Wright, PA

THANKS TO
OUR OHIO CREW!
Noel Olson, Diane Snyder, Cruz
& Trent Nichols, Doug Gehring,
and Angela Robertson



2nd Spring Yearling Ewe, Class I
Sold to Dejoria Dorsets, OR

WE SALUTE
ALL OUR BUYERS!
We appreciate every new and repeat
buyer for their trust in our genetics
to enhance their flocks.

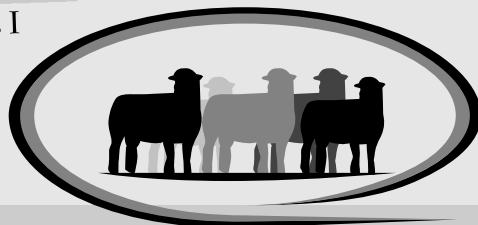


4th Fall Yearling Ewe, Class I
Sold to Cooper Gehring, MO

Look for More
of Our Dorsets at the
MIDWEST
STUD RAM SALE
Sedalia, MO



3rd Late Fall Ewe Lamb, Class II
Sold to Jackson Parker, IA



Superior Farms, LLC. • Evan Snyder, Farm Manager

5500 N. Sara Road • Yukon, OK 73099 • 405/314-1642 • llamasheep@superiorfarms.net

YOUTH NEWS

2010 ALL-AMERICAN JUNIOR SHOW AT MICHIGAN STATE UNIVERSITY

The 2010 All-American Junior Show has been set for July 2nd-4th at the Michigan State University Livestock Pavilion, East Lansing, MI. Dorset breeding sheep and market lambs will be shown Sunday, July 4th. The Horned Dorset breeding classes will be first followed by the Polled Dorsets. Judges for this year's All-American are Jeremy Etzler, South Solon, OH and Jake Reister, Washougal, WA.

The 2010 All-American will feature slick shorn classes for breeding sheep for the second year. The Dorsets will have these additional classes. The show will also feature a new power point presentation promotion category for our older exhibitors.

The folks in Michigan are sponsoring many additional activities including a tour of the MSU Campus on Thursday, a BBQ on Saturday night, special exhibitor breakfasts on Saturday and Sunday mornings, and a pie and ice cream welcome social on Friday. Please take advantage of these sponsored activities for your family.

Following is a schedule of the 2010 events:

Thursday, July 1st:

8:00 AM - Barns open-exhibitors and sheep may move in

2:00 PM - Tour of MSU Campus

Friday, July 2nd:

8:30 AM - Announcements

9:00 AM - Pick-Up Exhibitor T-Shirts & Receive Information Packets

9:00 AM - Skill-a-thon open to contestants

9:15 AM - Check-in papers, fleeces and promotional items.

10:00 AM - Judging Contest Begins and Market Lambs Weighed & Classified

12:00 PM - All-American Lamb Camp: 1st session, sponsored by Michigan Farm News

1:00 PM - Ice Cream Social sponsored by MSU & Michigan Sheep Breeders

2:00 PM - Opening Announcements & Group Photo

2:30 PM - Showmanship Classes

4:00 PM - Skill-a-thon closes for the day

6:30 PM - 3-on-3 Basketball Tourney (pizza and drinks will be served)

Saturday, July 3rd:

8:00 AM - Ring One

-Shropshire Breeding Sheep & Mkt Lambs

-Cheviot Breeding Sheep & Mkt Lambs

-Hampshire Breeding Sheep & Mkt Lambs

-Dorper Sheep & Mkt Lambs

-Tunis Breeding Sheep & Mkt Lambs

8:00 AM - Ring Two

-Shetland Breeding Sheep & Best Fleece

-Columbia Breeding Sheep & Best Fleece

-Oxford Breeding Sheep & Mkt Lambs

-Natural Colored Breeding Sheep, Best Fleece & Mkt Lambs

-Romney Sheep & Best Fleece

-Montadale Breeding Sheep & Mkt Lambs

8:00 AM - Skill-a-thon opens to contestants

ants

11:00 AM National Junior Dorset

Association Meeting & BBQ followed by breed type education program

1:00 PM All-American Lamb Camp - 2nd session sponsored by Michigan Farm News

3:00 PM - Skill-a-thon closes for the day

7:00 PM - Pool Party at the MSU Pool

sponsored by the American Southdown

Junior Southdown Breeders

7:00 PM - Cookout at the Pavilion sponsored by Nick Mazich Family & L.C.

Scramlin Family

Sunday, July 5th:

8:00 AM - Ring One

-Southdown Breeding Sheep & Mkt Lambs

8:00 AM - Ring Two

-Horned Dorset Breeding Sheep & Mkt

-Polled Dorset Breeding Sheep & Mkt

-Immediately Following - 3-on-3 Basketball Final Game

-Immediately Following - All-American Lamb Camp Graduation

-Closing Ceremonies - Announcements of awards and raffle drawing, sheep released after closing ceremonies

All exhibitors who showed in the All-American within the last two years should of been mailed a premium book. Entries are also available at:

www.allamericanjuniorshow.com

Entries closed May 20th but the All American does accept late entries at no extra cost.

Accommodations:

Main Hotels with Special All-American Show Rates:

-FAIRFIELD INN-EAST- 2335 Woodlake Dr., Okemos, MI 48864 (517) 347-1000

-CANDLEWOOD SUITES - 13545 Forest Rd., Lansing, MI 48910 (517) 651-8181

-Camper sites also available at the MSU Pavilion \$10.00 per night

-Other hotels located in nearby Okemos, MI.

The CDC would like to thank Riverwood Farms, Powell, OH for their recent donation of a fall ewe lamb that was sold at the Ohio Dorset sale to help support the Polled Dorset Show at the 2010 All-American. Also, thank-you to the

DeVries Family of Freeport, IL for donating half of the sale proceeds from their yearling ewe at the Illinois Dorset Sale. Cassell Horned Dorsets, Wytheville, VA donated a horned ewe lamb that was auctioned off at the Ohio Dorset Sale for the support of the Horned Dorset portion of the All American Show. **THANK-YOU** to all of them for their support and to all those that bid on the sheep.

Breeders also signed up to sponsor classes at the upcoming All-American. Thank-you also goes to the following class sponsors:

-McCarthy Polled Dorsets, OH; Bradford Farms, OH; Inbody Polled Dorsets, OH; Superior Farms, Yukon, OK; Van Bair Farm, PA; H & H Tack Shop, PA; Saylor Sale Management, OH; Lauden Acres, PA; Evan Snyder, OK; Nichols Dorsets, KY; Twin Oaks Dorsets, OH; Paul & Nancy Wissinger, PA; Maple Hollow Farm, PA; Orchard Valley Farm, MA; Shepherd's View Farm, DE; TAZ Farm Dorsets, PA; Green River Farms, CA; S BAR J Ranch-Mike Jensen, CA; Sidwell Show Sheep, CO; Ewephoric!, CA; Spring Hill Farm, NH; Ridge Betts, DE; Schwartz Horned Dorsets, OH; Pine Ridge Dorsets, PA; Patoka Valley Sheep, IN; Oberholtzer Horned Dorsets, PA; McDaniel Horned Dorsets, IN; Galleher Horned Dorsets, OH; Crill Horned Dorsets, IN; Root Family Horned Dorsets, OH; Frank Tiffany, NY and Warren, Sally & Simon Squires, OH There are a couple of classes still available for sponsorship. If you are interested please contact the CDC Office.

THANK-YOU to everyone for your class sponsorship! Thanks to all of you a total of \$2360 has been raised for the All-American Dorset Shows to date!

All-American Raffle tickets are still available for the the Alumline Popper, Hydraulic Lift Trimming Stand and Michigan Product Baskets. If you haven't returned your tickets yet from your registration work please do so or if you want some tickets contact the CDC Office. Thank-you to all of you who have purchased tickets from the CDC Office mailings!

We are all looking forward to a great Dorset Show at this year's All-American! For you non-exhibitors if you are near the Michigan area over July 4th weekend stop by and observe a great junior sheep event! A big **THANK-YOU** needs to go out to Judy Moore for all her efforts in organizing this year's show in Michigan along with all the Michigan Sheep breeders and Michigan State University for their support!

2010 REGIONAL JUNIOR SHOWS

Eastern Regional Jr. Show June 18-20, 2010

held in conjunction with the
Keystone Classic

Penn State University
University Park, PA

Entry information contact:

Stacy Taylor email: stctylr@aol.com or
Melanie Barkley (814)623-5756

Western Regional Jr. Show July 14-18, 2010

held in conjunction with the
California State Fair
Sacramento, CA

Entry information contact:
California State Fair

website: www.bigfun.com

New England Regional Jr. Show July 16-18, 2010

held in conjunction with the
Northeast Youth Sheep Show
BIG E Fairgrounds

West Springfield, MA

Entry information contact:

Polled: Pat Poitras (413)283-9852
Horned: Kelly Wright (603)357-5608
website: nesheep.org

Great Lakes Regional Jr. Show August 4, 2010

held in conjunction with the
Ohio State Fair

Ohio State Fairgrounds
Columbus, OH

Entry information contact:

Pat Myers (937)468-2035
email: smyers@loganrec.com

North Central Regional Jr. Show August 22, 2010

held in conjunction with the
Illinois State Fair

Illinois State Fairgrounds
Springfield, Illinois

Entry information contact:

Larry Hunter (309)337-0380
website: <http://www.agr.state.il.us/isf>

Great Plains Regional Jr. Show October 3, 2010

held in conjunction with the
Tulsa State Fair

Tulsa, OK

Entry information contact:

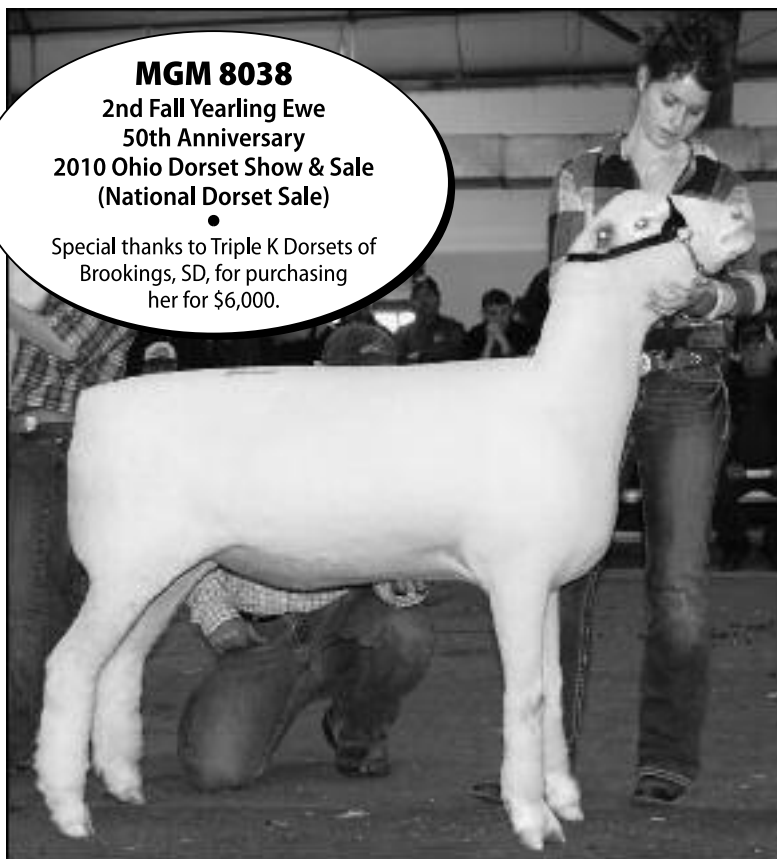
Tom Diel (405)547-2044
website: www.tulsastatefair.com

"SWEET THING"...Got Their Attention In Ohio!

MGM 8038

2nd Fall Yearling Ewe
50th Anniversary
2010 Ohio Dorset Show & Sale
(National Dorset Sale)

Special thanks to Triple K Dorsets of
Brookings, SD, for purchasing
her for \$6,000.



Now... We Plan to Get Their Attention Again with Our Entries at the
Midwest Stud Ram Sale • Sedalia, MO

Thanks to All Our Spring Buyers & Bidders!

Also thanks to Joel Parker for his fitting expertise on our sale sheep!

MGM DORSETS

Grace Murphy • mgmdorsets@embarqmail.com

574/292-4479 • 16880 6th Road • Plymouth, IN 46563

2010 SCHOLARSHIP APPLICATION AVAILABLE ON-LINE

The National Junior Dorset Association annually presents up to two \$1000 scholarships. To qualify, a student must be completing at least half of his or her college or technical school studies the year in which the application is made or be enrolled in graduate school.

These awards are available to current and previous members of the Continental Dorset Club Youth Enrollment Program or current lifetime members of the Continental Dorset Club. Applicants

may be majoring or specializing in any type of field as these awards are not limited to agricultural majors.

The application must be post-marked **September 1, 2010**. Two letters of recommendation must be enclosed with the application. The individual completing the recommendation may return it to you in a sealed envelope, which has been signed over the flap. Send completed applications to:

**Continental Dorset Club, Inc.
Junior Dorset Assoc. Scholarship
P.O. Box 506
North Scituate, RI 02857-0506**

continued on page 20

YOUTH NEWS, cont.

The National Junior Dorset Association Scholarship Committee will review all applications received. The top applicants may be subject to a personal interview with the committee either in person or by telephone. Final awards are selected by the committee. Applicants will be notified of the selections by October 10, 2010. These awards will be presented at the Annual Meeting of the National Junior Dorset Association in Louisville, KY on Saturday evening November 13, 2010. The complete scholarship application is available on the CDC Website at: www.dorsets.homestead.com.

REGIONAL JUNIOR SHOW ELIGIBILITY REQUIREMENTS

Following are the eligibility requirements for the Regional Junior Dorset Shows for your information:

1) Exhibitor must be a current member of the CDC whether in the youth enrollment program or as a lifetime member.

2) Exhibitor needs to be 21 years old or younger as of January 1st of the current year. There is no lower age limit but the exhibitor must be able to lead and/or control the head of his/her animal in the show ring.

3) Exhibitor must be present to show their own animals unless physically impaired. The junior owner will need to be at the head of the animal controlling it in the show ring, unless of course they have more than one entry in a class in which case another junior exhibitor showing their second animal is acceptable.

4) Sheep must be registered in the youth's name. Youth partnerships are acceptable except for futurity animals which must be in the individual youth owner's name ONLY. Farm names or "family" ownerships are not acceptable.

5) Exhibitor can show at an unlimited number of regional junior shows per year, the CDC does prefer they at least show at the regional show in which they reside if possible.

7) **EW E FUTURITY PROGRAM:** Your futurity ewe can earn double points at a regional junior show for the futurity ewe program. If you show at more than one regional show only your top point total will be doubled.

Regional junior shows are sometimes held in conjunction with existing shows so there definitely may be other show specific rules and regulations that



LETTER FROM JUNIOR DORSET ASSOCIATION PRESIDENT TROY LONGENECKER

Finally, the winter is over, the lambs are weaned and all cut out for the start of an amazing show season. Sales have been progressing across the country with our National being held at the Ohio Dorset Sale. We had a fair turnout of buyers and an excellent set of sheep provided by all of the consignors young and old. Fellow Junior members did very well with their consignments, with such recognition as Michael Houfe winning National Sale Horned Dorset Ewe, and Grace Murphy with her high selling "Sweet Thing" yearling ewe.

The All-American Jr. Show should be the highlight of everyone's summer in East Lansing, Michigan from July 1-4th. This event is filled with activities from the basketball tournament to other promotional contests. On Saturday the 3rd, we also hold a Dorset picnic and a meeting with the families of the Junior Members exhibiting. I encourage all of you to attend your respective Regional Junior Shows this summer and fall. If you purchased and are participating in the futurity program, these shows offer double points to rack up for your National total at the conclusion of the show season in NAILE.

I wish everyone the best of luck and to have a lot of fun this spring and summer at the junior shows and sales.

Troy Longenecker,
Junior Dorset Association President

apply. Please be aware of these additional requirements when making out your entries to these special shows.

DORSET EWE FUTURITY PROGRAM GETTING ANOTHER GREAT START IN 2010

To date we have had 106 polled ewe lambs nominated in the spring Dorset Sales, and 43 lambs have been tattooed by their new junior owners to participate in this year's program. In the horned dorset ewe lamb futurity, we have had 27 ewe lambs nominated, 14 head have been tattooed by their new junior owners. The yearling ewe program has had a record 9 nominations this year.

Four breeders have elected to participant in the group nomination program where all of their ewe lambs sold at this year's designated sales will be eligible for the futurity. Thank you to the following group nominators:

-Riverwood Farms, Powell, OH-
-Superior Farms, Yukon, OK-

-Pine Ridge Farm, East Berlin, PA-
-Cassell Horned Dorsets, Wytheville, VA-

Of course there are a lot of individual nominators also. The overwhelming support by the Dorset breeders is the major reason why this program has become so successful! Juniors are able to select from a large number of ewe lambs that will fit into both their breeding program and financial budget. There are plenty of sales remaining where junior buyers can select futurity ewe lambs. See the sales listed in the Dorset Calendar on page 4.

The CDC Board of Directors is looking into developing a division in the futurity program for off-farm purchases. This is being look at in the areas like the Western and Great Plains regions where they are very few sales for junior Dorset breeders to attend to purchase their animals and travel to sales becomes a hardship. The CDC has had the least participation in the futurity program in these regions because of this. If you have any opinion on this new division please let the director know in your area. Your input as a future participant is greatly appreciated.

RIVERWOOD FARMS

The Source for Super Seedstock with Predictable Genetics!



RF 3035 RR

A True

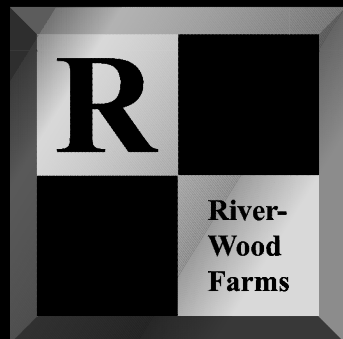
"POWER FEMALE"

at Riverwood Farms

At the 2010
Ohio Dorset Sale
130 of the 260 Polled
Dorset entries trace
back to her!!

Often times breeders will boast about a great individual in their flock. But how does one truly measure the genetic influence of a particular animal in a breeding program? We may not have the exact answer you're looking for, but we do know this...RF 3035 has set the bar high in the Dorset Breed! Far more impressive than being a National Champion herself, she has dammed National Champion Rams in "High Definition" and "Incision". Her grandsons are notable studs such as "Primo", "Dow Jones", "S&P" and "Optimus Prime". With these credentials, wouldn't you consider her a "Power Female"?

Look for our consignment at the Midwest Stud Ram Sale, Sedalia, MO.



RIVERWOOD FARMS

- Polled Dorsets • Dorpers
- White Dorpers • Lowline Cattle

ERIC BRUNS, Shepherd • Cell: 614/403-1436
TOM HENRY, Farm Manager DAVE HARMANN, Associate
SHAWN KENNEDY, Assistant Farm Manager

JAMES KLINGBEIL
Owner

1000 West Powell Rd.
Powell, Ohio 43065

Barn: 614/885-6268
Fax: 614/885-2851
riverwood_farms@msn.com
www.riverwoodfarms.com

2010 DORSET SPRING SALES RESULTS

National Dorset Sale

Ohio Dorset Sale

March 19-20, 2010

Eaton, Ohio

Townsend Best Polled Dorset Consignment Award

Superior Farms, Yukon, OK

POLLED DORSETS:

-Fall Yearling Rams (8 head avg. \$1181.25):

1)**Grand & Senior Champion:** Reynolds Stock Farm, OR to Larry Inbody & Family, Jenera, OH \$2200

2)**Reserve Grand & Reserve Senior Champion:** Rick Klampe, OR to Sunny Valley Farm-Brian & Cerrita Reed, Manheim, PA \$3300

3)Mona Lisa Pettersson, WA to Stacy Grohmann,Gilson, IL \$1500

4)Purple Ribbon Farm, IL to Yancy Harrison, Garrison, TN \$850

5)Pine Ridge Dorsets, PA to Larry Smith & Family, Crawfordsville, IN \$300

6)Woodland Dorsets, OH to McDaniel Ranch, Greenfield, IN \$800

7)Woodland Dorsets, OH to Justin Fruechte, Erwin, SD \$300

8)DeGroats Dorsets, OH to Larry Gardner, Waverly, WV \$200

-Spring Yearling Rams (13 head avg. \$1042.31):

1)Superior Farms, OK to Behnfeldt Dorsets, Defiance, OH \$650

2)Pine Ridge Dorsets, PA to Lauden Acres, Dalmatia, PA \$4000

3)Spilde Dorsets, WI to Piller Dorsets, Mendota, IL \$2250

4)Gene & Marci Sanford, MN to Casper Dorsets, Menomonie, WI \$500

5)Spilde Dorsets, WI to Jenna Davis, Chillicothe, OH \$600

6)Riverwood Farms, OH to Ethan Hodel, Maroa, IL \$2200

7)Myers Polled Dorsets, OH to Westwind Farm-Anderson Family, Hustonville, KY \$875

8)Robert & Linda Highfield, OH to Marvin Koerper, Geneseo, IL \$900

9)Pine Ridge Dorsets, PA to Holz Family, Camden-Wyoming, DE \$400

10)Riverwood Farms, OH to Shirley, Allen & Daylon Scheele, Stockton, IL \$300

11)Chapman Sheep Farms, MI to Jimmy Parker, Vinemont, AL \$200

12)Ram & Ewe Farm, OH to Robert Papineau, Lotbiniere, Quebec, Canada \$350

13)Heidi Barkley, PA to Casper Dorsets, Menomie, WI \$325

-Early Fall Ram Lambs (27 head avg. \$720.37):

1) **Junior Champion:** Twin Oaks Dorsets, OH to Rick Klampe, Jefferson, OR \$3200

2) **Reserve Junior Champion:** Twin Oaks Dorsets, OH to Mike

Driscoll, Elora, Ontario, Canada \$2000

3)Freitas/Bianchi Dorsets, CA to Dover Genetics & Daniels Dorsets, Piper City, IL \$1400

4)Van Bair Farms, PA to Mitch, Abby, Riley Donkers, Faribault, MN \$550

5)Twin Oaks Dorsets, OH to Jim & Wendy Driscoll, Alma, Ontario, Canada \$900

6)Smith Sheep Farm, IL to Mike Driscoll, Elora, Ontario, Canada \$400

7)Van Bair Farms, PA to George L. Myers & Michelle A. Parker, Croton, OH \$300

8)J.L. Thornsborough, IL to Jonathan Field, Lincoln, CA \$1025

9)**Best Headed Ram:** Spilde Dorsets, WI to Piller Dorsets, Mendota, IL \$1000

10)Spilde Dorsets, WI to Jonathan Field, Lincoln, CA \$2000

11)Ram & Ewe Farm, OH to Brian Snyder, Reading, PA \$400

12)Riverwood Farms, OH to Southfield Corporation, Southfield, MA \$500

13)McCarthy Polled Dorsets, OH to Marvin Koerper, Geneseo, IL \$300

14)Sugarloaf Dorsets, MN to Troy Longenecker, Annville,PA \$600

15)Riverwood Farms, OH to Sarah Gehring, Centralia, MO \$700

16)Haven Point Dorsets, PA to Spilde Brothers, Stoughton, WI & Reynolds Stock Farm, Aumsville, OR \$500

17)Mangers Dorsets, OH to James Allen & Inger Cloe, Cynthiana, KY \$200

18)McCarthy Polled Dorsets, OH to Shirley, Allen & Daylon Scheele, Stockton, IL \$375

19)Triple K Dorsets, SD to Melvin Carr, Keosauqua, IA \$200

20)Bel-Mar Farm, OH to Larry Gardner, Waverly, WV \$300

21)Cedar Lane Dorsets,WI to Justin Wilson, Cambridge,OH \$450

22)Riverwood Farms, OH to Dillon Brady, Goffstown, NH \$300

23)Mangers Dorsets,OH to Chris & Katie Noser, Kimmell,IN \$200

24)Cedar Lane Dorsets, WI to Westwind Farm-Anderson Family, Hustonville, KY \$325

25)Spilde Dorsets, WI to Timberline Farm, Greencastle, IN \$325

26)Robert & Linda Highfield, OH to James Allen & Inger Cloe, Cynthiana, KY \$200

27)Robert & Linda Highfield, OH to Dusty Rincker, Stewardson, IL \$800

-Late Fall Ram Lambs (7 head avg. \$857.14):

1)Twin Oaks Dorsets, OH to Lexi, Libby, Kali & Kyla Wolkow, DeSmet, SD \$2900

2)Freitas/Bianchi Dorsets, CA to Lexi, Libby, Kali & Kyla Wolkow, DeSmet, SD \$1200

3)Ram & Ewe Farm, OH to Grand View Acres, Ulster, PA \$700



**Res. Grand & Res.Sr. Champion Polled Ram
Fall Yearling Ram
Rick Klampe, Jefferson, OR**



**Junior Champion Polled Ram
Early Fall Ram Lamb
Twin Oaks Dorsets, Belle Center, OH**



**Reserve Junior Champion Polled Ram
Early Fall Ram Lamb
Twin Oaks Dorsets, Belle Center, OH**



Best Headed Polled Ram
Early Fall Ram Lamb
Spilde Brothers, Stoughton, WI



Reserve Grand & Sr. Champion Polled Ewe
Fall Yearling Ewe
Twin Oaks Dorsets, Belle Center, OH



Junior Champion Polled Ewe
Early Fall Ewe Lamb
Twin Oaks Dorsets, Belle Center, OH

4)Mithoefer Dorsets, IN to Glenn Stunkel, Tuscarora, MD \$300
5)Wolkow Dorsets, SD to Triple K Dorsets, Brookings, SD \$450
6)Cedar Lane Dorsets, WI to James Allen & Inger Cloe, Cynthiana, KY \$275

7)Mindy Gibson, MO to George L. Myers, Croton, OH \$200

-Fall Yearling Ewes (31 head avg. \$1,348.39):

1)**Grand & Senior Champion** : Superior Farms, OK to Emily Passwaters, Bridgeville, DE \$8500

2)**Reserve Grand & Reserve Senior Champion:**Twin Oaks Dorsets, OH to Gus Ross, Eaton, OH \$8000

3)Nichols Dorsets, KY to Triple K Dorsets, Brookings, SD \$1400

4)Grace Murphy, IN to Triple K Dorsets, Brookings, SD \$6000

5)Haven Point Dorsets, PA to Emily Passwaters, Bridgeville, DE \$3000

6)Kristina Repasky, MN to Caiden Daugherty, Mount Gilead, OH \$2250

7)Smith Sheep Farm, IL to Shelby L. Phillips, Crawfordsville, IN \$900

8)Superior Farms, OK to Cooper Gehring, Columbia, MO \$1750

9)Lauden Acres, PA to Daniels Dorsets, Forreston, IL \$350

10)Lauden Acres, PA to A. Thornsborough, West Lebanon, IN \$700

11)Lauden Acres, PA to DeGroats Dorsets, Kettering, OH \$500

12)Smith Sheep Farm, IL to Daylight Farms, Evansville, IN \$350

13)Superior Farms, OK to Barbara Gingras, Norwell, MA \$650

14)LaRosh-Davison, KS to Purple Ribbon Farms, Arcola, IL \$950

15)Riverwood Farms, OH to Michael Pope, Morristown, IN \$1000

16)Lauden Acres, PA to Daylon Scheele, Stockton, IL \$325

17)Lauden Acres, PA to David A. Meirs, Cream Ridge, NJ \$375

18)Van Bair Farms, PA to Larry Gardner, Waverly, WV \$200

19)Reynolds Stock Farm, OR to Larry Gardner, Waverly, WV \$200

20)Pine Ridge Farm, PA to David A. Meirs, Cream Ridge, NJ \$375

21)Paul & Nancy Wissinger, PA to Larry Gardner, Waverly, WV \$200

22)Houfe Dorsets, WI to Grand View Acres, Ulster, PA \$350

23)Pine Ridge Dorsets, PA to Glenn Stunkel, Tuscarora, MD \$525

24)Haven Point Dorsets, PA to Trent, Cruz & Olivia Nichols, Harrodsburg, KY \$450

25)Riverwood Farm, OH to Will Aycock, Remlap, AL \$350

26)Dusty Rincker, IL to Daylon Scheele, Stockton, IL \$275

27)DeGroats Dorsets, OH to George T. McConnell, Jr., West Salem, OH \$225

28)Lauden Acres, PA to Lee Donald Olson, New Virginia, IA \$350

29)Harold & Linda Tyson, PA to Wayne Thiel, Norwich, NY \$550

30)Haven Point Dorsets, PA to Ben Calkins, Newbury, OH \$400

31)Lauden Acres, PA to Shane Lobdell, Lena, IL \$350

-Spring Yearling Ewes (53 head avg. \$734.43):

1)Lauden Acres, PA to Kristina Repasky, Prior Lake, MN \$3000

2)Spilde Dorsets, WI to Tera Fair, Greenfield, IN \$1000

3)Superior Farms, OK to Lee Donald Olson, New Virginia, IA \$350

4)Superior Farms, OK to Johanna DeJoria, Newberg, OR \$1000

5)Superior Farms, OK to Caleb Wright, Alexandria, PA \$2200

6)Mac & Marni Shumaker, WI to Cordray Dorsets, Belvidere, IL \$4000

7)Cedar Lane Dorsets, WI to Sarah Moore, Jerseyville, IL \$375

8)Kristina Repasky, MN to Kaitlyn Verhaeghe, Argos, IN \$2500

9)Allan & Norma Freitas, CA to Kaitlyn Verhaeghe, Argos, IN \$800

10)Haven Point/Brian Benedict, PA to Sidney DeVries, Freeport, IL \$1800

11)Spilde Dorsets, WI to Robert Schembs, Colfax, IN \$525

12)Spilde Dorsets, WI to Reynolds Stock Farm, Aumsville, OR \$750

13)Wolkow Dorsets, SD to Triple K Dorsets, Brookings, SD \$350

14)Lien Dorsets, WI to Glenn Stunkel, Tuscarora, MD \$500

15)Green River Farms, CA to Kristina Repasky, Prior Lake, MN \$500

16)Mac & Marni Shumaker, WI to Cordray Dorsets, Belvidere, IL \$500

17)Freitas/Bianchi Dorsets, CA to Corey Moshier, Gilson, IL \$450

18)Spilde Dorsets, WI to David A. Pinckney, Cayuga, NY \$300

19)Nichols Dorsets, KY to Megan Erickson, Darien, WI \$300

20)Smith Sheep Farm, IL to Lee Donald Olson, New Virginia, IA \$250

21)Ram & Ewe Farm, OH to Lee & Louise Wagner, Easton, PA \$750

22)Pine Ridge Dorsets, PA to Kori Beisbier, Reedsburg, WI \$325

23)Pine Ridge Dorsets, PA to Thomas Vandiveter, Arcola, IL \$325

24)Riverwood Farms, OH to Freitas/Bianchi, Oakdale, CA \$3700

25)Smith Sheep Farm, IL to Lee Donald Olson, New Virginia, IA \$275

26)Mithoefer Dorsets, IN to Glenn Stunkel, Tuscarora, MD \$700

27)Pine Ridge Dorsets, PA to Grand View Acres, Ulster, PA \$475

28)Freitas/Bianchi Dorsets, CA to Mindy Stoops Irvine, Sunbury, PA \$375

29)Riverwood Farms, OH to Lauren Wright, Alexandria, PA \$1000

30)Pine Ridge Dorsets, PA to David A. Meirs, Cream Ridge, NJ \$400

-other high sellers: 43)Mithoefer Dorsets, IN to Greg Lough & Family, Darlington, IN \$2150

-Slick Shorn Yearling Ewes (4 head avg. \$325.00):

1)Myers Polled Dorsets, OH to Commonwealth Polled Dorsets, Staunton, VA \$350

2)Grace Murphy, IN to Don Myers, Fishers, IN \$450

3)Myers Dorsets, OH to Don Hamilton, West Liberty, OH \$300

4)Myers Polled Dorsets, OH to Stacy Taylor, State College, PA \$200

-Early Fall Ewe Lambs (55 head avg. \$822.72):

1)**Junior Champion:** Twin Oaks Dorsets, OH to Sidney DeVries, Freeport, IL \$2500

2010 DORSET SPRING SALES RESULTS, cont.

2)**Junior Reserve Champion:** Smith Sheep Farm, IL to CJN Dorsets, Emington, IL \$2000
 3)Superior Farms, OK to Austin Hicks, Stillwater, OK \$4700
 4)Spilde Dorsets, WI to Johanna DeJoria, Newberg, OR \$3000
 5)Egan Dorsets, IL to Kyle Gutormson, Brookings, SD \$1700
 6)Smith Sheep Farm, IL to Shelby L. Phillips, Crawfordsville, IN \$1000
 7)Twin Oaks Dorsets, OH to Jennifer & Jason Apple, Greenfield, IN \$1500
 8)Twin Oaks Dorsets, OH to Daniels Dorsets, Forreston, IL \$1500
 9)Ram & Ewe Farm, OH to Michael Pope, Morristown, IN \$1800
 10)Kristina Repasky, MN to Kaden Gutormson, Brookings, SD \$1500
 11)Ram & Ewe Farm, OH to Ethan Hodel, Maroa, IL \$1500
 12)Pine Ridge Dorsets, PA to CJN Dorsets, Emington, IL \$650
 13)Twin Oaks Dorsets, OH to Cordray Dorsets, Belvidere, IL \$1500
 14)Pine Ridge Dorsets, PA to Sarah Moore, Jerseyville, IL \$800
 15)Mithoefer Dorsets, IN to Greg Lough & Family, Darlington, IN \$800
 16)Van Bair Farms, PA to Ashley Pinckney, Cayuga, NY \$350
 17)Spilde Dorsets, WI to Jenna A. Davis, Chillicothe, OH \$700
 18)Kristina Repasky, MN to Sugarloaf Dorsets, Pipestone, MN \$2100
 19)**Best Headed Ewe:** Ram & Ewe Farm, OH to Kelsey Sheeley, Hillsboro, OH \$1300
 20)Bianchi Family, CA to Kori Beisbier, Reedsburg, WI \$700
 21)Riverwood Farms, OH to Kurt Gutormson, Brookings, SD \$1300
 22)Riverwood Farms, OH to Superior Farms, Yukon, OK \$800
 23)Mithoefer Dorsets, IN to Ashley Pinckney, Cayuga, NY \$300
 24)Van Bair Farms, PA to JEM Farm, Tipp City, OH \$200
 25)Cedar Lane Dorsets, WI to Dusty Rincker, Stewardson, IL \$200
 26)James Piller, IL to Shane Lobdell, Lena, IL \$425
 27)Mithoefer Dorsets, IN to Grace Murphy, Plymouth, IN \$550
 28)Wolkow Dorsets, SD to Barbara Gingras, Norwell, MA \$350
 29)Green River Farms, CA to Sean Eldridge, Winters, CA \$500
 30)Haven Point Dorsets, PA to Shane Lobdell, Lena, IL \$600
-other high sellers:
 33)McCarthy Polled Dorsets, OH to Superior Farms, Yukon, OK \$900
 39)Riverwood Farms, OH to Kassidy Oliger, Hagerstown, IN \$550
 49)Riverwood Farms, OH to Jennifer & Jason Apple, Greenfield, IN \$850
-Late Fall Ewe Lambs (23 head avg. \$776.09):
 1)Twin Oaks Dorsets, OH to Sidney DeVries, Freeport, IL \$1800

2)Smith Sheep Farm, IL to Jonathan Albright, Rock City, IL \$475
 3)Superior Farms, OK to Emily Passwaters, Bridgeville, DE \$1500
 4)Egan Dorsets, IL to Shelby Phillips, Crawfordsville, IN \$400
 5)Smith Sheep Farm, IL to Jonathan Albright, Rock City, IL \$500
 6)Superior Farms, OK to Jackson Parker, Edinburgh, IN \$1700
 7)Riverwood Farms, OH to Kori Beisbier, Reedsburg, WI \$850
 8)Riverwood Farms, OH to Michael Pope, Morristown, IN \$1800
 9)Mindy Gibson, MO to Rachel Berninger, Wilmington, DE \$475
 10)Purple Ribbon Farm, IL to Sarah Moore, Jerseyville, IL \$1150
 11)Haven Point Dorsets, PA to Sugarloaf Dorsets, Pipestone, MN \$1800
 12)Egan Dorsets, IL to Tyler Lobdell, Lena, IL \$425
 13)Woodland Dorsets, OH to Ram & Ewe Farm, South Solon, OH \$325
 14)Woodland Dorsets, OH to Ram & Ewe Farm, South Solon, OH \$325
 15)Mithoefer Dorsets, IN to Patricia Schundel/Trinity Welch, Metamora, IL \$200
 16)Cedar Lane Dorsets, WI to Patricia Schundel/Trinity Welch, Metamora, IL \$300
 17)Gene & Marci Sanford, MN to Jonathan Albright, Rock City, IL \$350
 18)Wolkow Dorsets, SD to Johnson Brothers, Hillsboro, OH \$200
 19)Sugarloaf Dorsets, MN to Dillon Brady, Goffstown, NH \$525
 20)Haven Point Dorsets, PA to Kaitlyn Verhaeghe, Argos, IN \$1750
 21)Mithoefer Dorsets, IN to Ryan Pillich, Rush, NY \$300
 22)Mithoefer Dorsets, IN to Mindy Stoops Irvine, Sunbury, PA \$250
 23)Sugarloaf Dorsets, MN to Dillon Brady, Goffstown, NH \$450
-Slick Shorn Ewe Lambs (4 head avg. \$281.25):
 1)Myers Polled Dorsets, OH to Justin Fitzwater, Manchester, OH \$475
 2)Myers Polled Dorsets, OH to Justin Fitzwater, Manchester, OH \$200
 3)Brain & Melanie Barkley, PA to Nick Cheran, Richfield, PA \$200
 4)Myers Polled Dorsets, OH to Don Hamilton, West Liberty, OH \$250

225 TOTAL LOTS GROSSED \$194,700.00 AVERAGING \$865.33

**Townsend Best Horned Dorset Consignment Award
 Paul R. Cassell, Wytheville, VA**

HORNED DORSETS:

-Fall Yearling Rams (2 head avg. \$400.00):

1)**Senior Champion:** Paul R. Cassell, VA to Noah & Natalie Richardson, Chester, OH \$500
 2)Lance Thompson, OH to Dakota Valley Sheep, Princeton, IN \$300



**Reserve Junior Champion Polled Ewe
 Early Fall Ewe Lamb
 Smith Sheep Farm, Stewardson, IL**



**Best Headed Polled Ewe
 Early Fall Ewe Lamb
 Ram & Ewe Farm, South Solon, OH**



**Senior Champion Horned Ram
 Fall Yearling Ram
 Paul R. Cassell, Wytheville, VA**

We're Proud Of Our National Sale Winners!



Reserve Grand Champion Ewe

"Stella" – Reserve Grand Champion Ewe at the 2010 National Dorset Show & Sale. She sold to Gus Ross, OH, for \$8,000.



Thanks to Haven Point Dorsets for purchasing half interest in "Relentless" privately at the farm. "Relentless" is sired by "Optimus Prime" and dammed by "Bugsy". Haven Point Dorsets will have fall lambs sired by him.

THE GARY SAYLOR FAMILY

937/464-7214 • Cell: 937/597-7214

Gary • Becky • Cameron • Kelsey • Cole
19570 County Road 75 • Belle Center, Ohio 43310
e-mail: gsaylor@watchtv.net

Three of the Four Junior Champions ...Plus... Reserve Grand Champion Ewe!

Pictured at right, top to bottom:

Junior Champion Ram...
sold to Klampe Dorsets, OR, for \$3,200. Sired by "Optimus Prime".

Jr. Reserve Champion Ram...
sired by "Optimus Prime" sold to Mike Driscoll, Canada, for \$2,000.

Junior Champion Ewe...
sold to Sidney DeVries, IL, for \$2,500 sired by "Optimus Prime". Sid also bought our class winning Late Fall Ewe Lamb sired by "Corazon".

Thank You! To our buyers who purchased sheep not pictured...

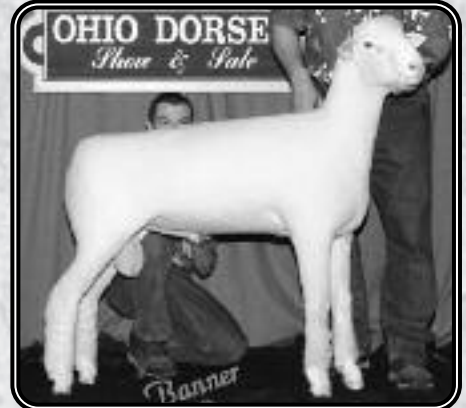
National Sale: Wolkow Dorsets, SD, purchased our 1st Late Fall Ram Lamb; Jim & Wendy Driscoll, Canada; Daniels Dorsets, IL; Jennifer & Jason Apple, IN; Cordray Dorsets, IL

Illini Dorset Sale: William Hanna, IL, purchased our Reserve Champion Ram; Mindy Gibson, MO, got our top selling ram at \$2,200; Joseph Tedford, KY

At the Farm: McDaniel Ranch, IN, added a group of brood ewes to their program.

Heading to Sedalia...

We've consigned 4 head to the Midwest Stud Ram Sale.



Junior Champion Ram



Junior Reserve Champion Ram



Junior Champion Ewe

"A Driving Force in the Dorset Breed"



**TWIN OAKS
DORSETS**



2010 DORSET SPRING SALES RESULTS, cont.



**Reserve Senior Champion Horned Ram
Spring Yearling Ram**
Kevin Whitmer, Bradford, OH



**Res. Grand & Res. Jr. Champ. Horned Ram
Early Fall Ram Lamb**
Ewephoric!, Shafter, CA



**Best Headed Horned Ram
Early Fall Ram Lamb**
Tim Gadsby, Stoneboro, PA

-Spring Yearling Rams (3 head avg. \$533.33):

- 1)**Reserve Senior Champion:** Kevin Whitmer, OH to Sally & Simon Squires, Westerville, OH and Galleher Farms, Mount Gilead, OH \$700
- 2)Shotts Sisters, OH to Larry Smith & Family, Crawfordsville, IN \$600
- 3)McDaniels Horned Dorsets, IN to Bentley Rathbun, Auburn, ME \$300

-Early Fall Ram Lambs (5 head avg. \$660.00):

- 1)**Grand & Junior Champion and Best Headed Ram:** Tim Gadsby, PA to Leaf Livestock, Geneseo, IL \$1300
- 2)**Reserve Grand & Reserve Junior Champion:** Ewephoric, CA to Battle Run Farms, Prospect, OH \$1050
- 3)Oberholtzer/Zimmerman, PA to Larry Smith & Family, Crawfordsville, IN \$200
- 4)Patoka Valley Sheep, IN to Melvin Stewart, Marysville, OH \$400
- 5)Barbara & Leon Cassell, VA to Roy A. Hively & Sons, New Waterford, OH \$350

-Late Fall Ram Lambs (4 head avg. \$250):

- 1)Paul R. Cassell, VA to Larry Smith & Family, Crawfordsville, IN \$400
- 2)Ewephoric, CA to Chris Quaka, Tonica, IL \$200
- 3)Schwartz Horned Dorsets, OH to Will Parker, Vinemont, AL \$200
- 4)Joe Crill & Family, IN to Feinerside Farm, Prairie Du Sac, WI \$200

-Slick Shorn Ram Lambs (1 head avg. \$200):

- 1)Squires Horned Dorsets, OH to Leaf Livestock, Geneseo, IL \$200

-Fall Yearling Ewes (12 head avg. \$875):

- 1)Paul R. Cassell, VA to Christina Shotts, DeGraff, OH \$1500
- 2)Paul R. Cassell, VA to Gene Bunting, Hubbard, OR \$700
- 3)Paul R. Cassell, VA to Battle Run Farms, Prospect, OH \$850
- 4)Patoka Valley Sheep, IN to Jade Zimmerman, East Earl, PA \$600
- 5)Lance Thompson, OH to Glenn Haven Farm, Grove City, PA \$1300
- 6)Micaela Nauman, OH to Christina Shotts, DeGraff, OH \$2100
- 7)Patoka Valley Sheep, IN to Wayne Thiel, Norwich, NY \$550
- 8)Squires Horned Dorsets, OH to Wayne Thiel, Norwich, NY \$1110
- 9)Rick Grimme, IN to Wayne Thiel, Norwich, NY \$525
- 10)Patoka Valley Sheep, IN to Roy A. Hively & Sons, New Waterford, OH \$450
- 11)Barbara & Leon Cassell, VA to Brandon O'Dell, Spencerville, OH \$525
- 12)Oberholtzer /Zimmerman, PA to D. Lance Carter, Bakersfield, CA \$300

-Spring Yearling Ewes (7 head avg. \$817.86):

- 1)**Grand & Senior Champion and Best Headed Ewe:**Houfe Dorsets, WI to Christina Shotts, DeGraff, OH \$1700
- 2)Paul R. Cassell, VA to Christina Shotts, DeGraff, OH \$1400
- 3)Paul R. Cassell, VA to Gene Bunting, Hubbard, OR \$700
- 4)Paul R. Cassell, VA to Jenniffer Oberholtzer, East Earl, PA \$550
- 5)Paul R. Cassell, VA to Roy A. Hively & Sons, New Waterford, OH \$550
- 6)Joe Crill & Family, IN to Wayne Shannon, Amanda, OH \$350
- 7)Galleher Horned Dorsets, OH to Wayne Shannon, Amanda, OH \$475



**Reserve Senior Champion Horned Ewe
Slick Shorn Yearling Ewe**
Lance Thompson, Carrollton, OH



**Res. Grand & Junior Champ. Horned Ewe
Early Fall Ewe am b**
Ewephoric!, Shafter, CA



**Reserve Junior Champion Horned Ewe
Early Fall Ewe Lamb**
Barbara & Leon Cassell, Wytheville, VA



**Best Headed Horned Ewe
Yearling Ewe
Michael Houfe, Milton, WI**

**-Slick Shorn
Yearling Ewes
(3 head avg.
\$916.67):**

**1)Senior
Reserve**

Champion:Lance
Thompson, OH to
Christina Shotts,
DeGraff, OH
\$1800

2)Kevin Whitmer,
OH to Paul R.
Cassell,
Wytheville, VA
\$550

3)Squires Horned
Dorsets, OH to
Charles & Sierra

8)Lance Thompson, OH to Roy A. Hively & Sons, New Waterford, OH \$400

9)Galleher Horned Dorsets, OH to Kevin Whitmer, Bradford, OH \$500

10)Rick Grime, IN to Galleher Farms, Mount Gilead, OH \$300

11)Lance Thompson, OH to Roy A. Hively & Sons, New Waterford, OH \$500

12)Oberholzter/Zimmerman, PA to Will Parker, Vinemont, AL \$250

13)Squires Horned Dorsets, OH to Charles Inbody, Jenera, OH \$450

-Late Fall Ewe Lambs (12 head avg. \$733.33):

1)Lance Thompson, OH to Christina Shotts, DeGraff, OH \$3000

2)Paul R. Cassell, VA to Ridge Betts, Felton, DE \$1000

3)Ewephoric, CA to Patoka Valley Sheep, Princeton, IN \$650

4)Paul R. Cassell, VA to Brandon O'Dell, Spencerville, OH \$1000

5)Micaela Nauman, OH to Charles Inbody, Jenera, OH \$500

6)Paul R. Cassell, VA to Bentley Rathbun, Auburn, ME \$550

7)Lance Thompson, OH to Kevin Whitmer, Bradford, OH \$550

8)Schwartz Horned Dorsets, OH to Joseph Tedford, Marion, KY \$300

9)Larry Richardson & Family, OH to Tom Parker, Vinemont, AL \$200

10)Lance Thompson, OH to Joseph Tedford, Marion, KY \$550

11)Larry Richardson & Family, OH to Chris Quaka, Tonica, IL \$275

12)Schwartz Horned Dorsets, OH to Chris Quaka, Tonica, IL \$225

-Slick Shorn Ewe Lambs (3 head avg. \$200):

1)McDaniel Horned Dorsets, IN to Will Parker, Vinemont, AL \$200

2)Squires Horned Dorsets, OH to Wayne Shannon, Amanda, OH \$200

3)Squires Horned Dorsets, OH to Chris Quaka, Tonica, IL \$200

65 TOTAL LOTS GROSSED \$41,500.00 AVERAGING \$638.46

Inbody, Jenera, OH \$400

-Early Fall Ewe Lambs (13 head avg. \$478.85):

1)**Reserve Grand & Junior Champion:**Ewephoric, CA to Ridge Betts, Felton, DE \$500

2)**Reserve Junior Champion:**Barbara & Leon Cassell, VA to Noah Richardson, West Chester, OH \$1000

3)Paul R. Cassell, VA to Larry Smith & Family, Crawfordsville, IN \$450

4)Squires Horned Dorsets, OH to Battle Run Farms, Prospect, OH \$475

5)Paul R. Cassell, VA to Brandon O'Dell, Spencerville, OH \$550

6)McDaniel Horned Dorsets, IN to Tom Parker, Vinemont, AL \$350

7)Paul Cassell, VA to William & Neva Johnston III, Grove City, PA \$500

Look At What We're Bringing To The...



Ram & Ewe Farm 521

521 is the Yearling Ram we've entered at Sedalia. He is a full brother to "Switch Back" and "Road Runner". "Switch Back" sired "Wouldja", our Champion Ram at last year's Midwest Stud Ram Sale which later went on to be Reserve Grand Champion and Best Headed Ram at the NAILE for Turtle Mead Farm. We have used this ram for fall lambs. His sire is "S & P" Saylor's Twin Oaks 616, and his dam is Ram & Ewe Farm 0332 (a "Backflash" daughter).

MIDWEST STUD RAM SALE

Sedalia, MO • June 21-26

Look for these two top stud ram prospects at Sedalia, plus... a Fall Ram Lamb sired by "Rewind" and at least one Spring Ram Lamb sired by "S & P" or "Jake".

Thank You!

Thanks to all of our recent buyers and supporters of our program. We look forward to seeing everyone at Sedalia and at the summer shows!

Jeremy, Jamie, Austin & Justin
ETZLER

425 Counts Road • South Solon, OH 43153
email: jetzler@att.net

740/874-9244
614/989-4025



Ram & Ewe Farm 572

572 is a Late Fall Ram Lamb entered at the Midwest Sale. His sire is "Wouldja" ("Switch Back" x Highfield 523) and his dam is Ram & Ewe Farm 497 ("S & P" x "RSVP" daughter).

RAM & EWE FARM
Polled Dorsets

2010 DORSET SPRING SALES RESULTS, cont.

Illinois Dorset Sale

April 3, 2010

Champaign, Illinois

POLLED DORSETS

-Fall Yearling Ram (1 head avg. \$300):

1)Parker Farm, IN to Roger, Ida & David Price, Pardeeville, WI \$300

-Spring Yearling Rams (4 head avg. \$737.50):

1)**Grand & Senior Champion:**Crouch Dorsets, IL to Kolb Dorsets, Toluca, IL \$700

2)Riverwood Farms, OH to Dillon Brady, Goffstown, NH \$1800

3)Sidney DeVries, IL to Leon Byers, Harvard, IL \$200

4)CJN Dorset, IL to Cory Moshier, Gilson, IL \$250

-Early Fall Ram Lambs (10 head avg. \$657.50):

1)**Reserve Grand & Reserve Senior Champion:**Twin Oaks Dorsets, OH to William Hanna, Macomb, IL \$800

2)Riverwood Farms, OH to Sidney DeVries, Freeport, IL \$1100

3)Robert Schembs, IN to Joseph Tedford, Marion, KY \$450

4)Van Bair Farms, PA to Austin Kuhring, Dieterich, IL \$350

5)Riverwood Farms, OH to Joseph Tedford, Marion, KY \$400

6)Highfield Dorsets, OH to Austin Kuhring, Dieterich, IL \$275

7)Twin Oaks Dorsets, OH to Mindy Gibson, Houstonia, MO \$2200

8)Parker Farm, IN to Andrew Lesch, Papineau, IL \$300

9)Highfield Dorsets, OH to Donald & Mary Lee, Bedford, IN \$475

10)Emily Passwaters, DE to Leon Byers, Harvard, IL \$225

-October Fall Ram Lambs (5 lots avg. \$475):

1)**Reserve Junior Champion:**Purple Ribbon Farms, IL to David J. Fernstaedt, Stockton, IL \$1000

2)Daniels Family Dorsets, IL to Shelby Gean, Halls, TN \$200

3)Van Bair Farm, PA to Elizabeth Ferguson, Marquand, MO \$525

4)Poynter Sheep Farm, IL to Anna Trotter, Marysville, IN \$400

5)Grace Murphy, IN to Elizabeth Ferguson, Marquand, MO \$250

-Late Fall Ram Lambs (2 head avg. \$425):

1)**Junior Champion:** Smith Sheep Farm, IL to Jonathan Albright, Rock City, IL \$650

2)Michael Pope, IN to Jacob Balding, Albion, IL \$200

-Spring Ram Lambs (2 head avg. \$200):

1)Mindy Gibson, MO to Tyler Riechmann, Okawville, IL \$200

2)Grace Murphy, IN to Wesley Lashnett, Winchester, IL \$200

-Fall Yearling Ewes (7 head avg. \$382.14):

1)Riverwood Farms, OH to Joseph Tedford, Marion, KY \$700

2)Smith Sheep Farm, IL to Jonathan Albright, Rock City, IL \$475

3)Robert Schembs, IN to Hannah Kyle Hutcherson, Halls, TN \$300

4)Riverwood Farms, OH to Joseph Tedford, Marion, KY \$350

5)Robert Schembs, IN to William Hanna, Macomb, IL \$325

6)Hayden's Dorsets, IN to Olivia Shirley, Bedford, IN \$275

7)J.L. Thornsborough, IL to William Hanna, Macomb, IL \$250

-Spring Yearling Ewes (14 head avg. \$639.29):

1)**Reserve Grand Champion & Senior Champion:**Dusty Rincker, IL to Lexi, Libby, Kali & Kyla Wolkow, DeSmet, SD \$1500

2)**Reserve Senior Champion:**Daniels Family Dorsets, IL to Elizabeth & Ryan Harnack, Janesville, WI \$1300

3)Smith Sheep Farm, IL to Ethan Hodel, Maroa, IL \$1150

4)Poynter Sheep Farm, IL to Shelby Gean, Halls, TN \$800

5)Parker Farm, IN to Hannah Kyle, Hutcherson, Halls, TN \$600

6)Parker Farm, IN to William Hanna, Macomb, IL \$550

7)Lien Dorsets, WI to William Hanna, Macomb, IL \$550

8)LaRosh-Davison Dorsets, KS to Leon Byers, Harvard, IL \$250

9)Sidney DeVries, IL to Michael J. Willis, Orland Park, IL \$200

10)Mindy Gibson, MO to William Hanna, Macomb, IL \$275

11)Riverwood Farms, OH to Grace Murphy, Plymouth, IN \$625

12)Lien Dorsets, WI to Morgan Bobb, Wever, IA \$600

13)Hayden's Dorsets, IN to Michael J. Willis, Orland Park, IL \$200

14)Sidney DeVries, IL to Morgan Bobb, Wever, IA \$350

-Early Fall Ewe Lambs (11 head avg. \$659.09):

1)Smith Sheep Farm, IL to Jonathan Albright, Rock City, IL \$1650

2)Van Bair Farms, PA to Shelby Gean, Halls, TN \$900

3)Riverwood Farms, OH to Ethan Hodel, Maroa, IL \$800

4)Twin Oaks Dorsets, OH to Joseph Tedford, Marion, KY \$800

5)Smith Sheep Farm, IL to Brendan Price, Pardeeville, WI \$500

6)Parker Farm, IN to Andrew Lesch, Papineau, IL \$400

7)Smith Sheep Farm, IL to Joseph Tedford, Marion, KY \$650

8)Riverwood Farms, OH to Dover Genetics, Piper City, IL \$625

9)Quarter Mile/Francis, IL to Olivia Shirley, Bedford, IN \$400

10)Quarter Mile/Francis, IL to Joseph Tedford, Marion, KY \$250

11)Michael Pope, IN to Elizabeth Ferguson, Marquand, MO \$275

-October Ewe Lambs (5 head avg. \$945):

1)**Grand & Junior Champion:**Purple Ribbon Farms, IL to Sidney DeVries, Freeport, IL \$1800

2)**Reserve Junior Champion:**Riverwood Farm, OH to Deanna Knapke, Rockford, OH \$1000

3)Poynter Sheep Farm, IL to Kali Wolkow, DeSmet, SD \$1100

4)LaRosh-Davison, Dorsets, KS to Elizabeth Ferguson, Marquand, MO \$425

5)Crouch Dorsets, IL to Joseph Tedford, Marion, KY \$400

-Late Fall Ewe Lamb (1 head avg. \$800):

1)Smith Sheep Farm, IL to Jonathan Albright, Rock City, IL \$800

-Spring Ewe Lamb (1 head avg. \$350):

1)Mindy Gibson, MO to Trevor Torrance, Good Hope, IL \$350

62 TOTAL LOTS GROSSED \$37,650.00 AVERAGING \$607.26



Illinois Grand Champion Polled Ram
Spring Yearling Ram
Crouch Dorsets, Eureka, IL



Illinois Grand Champion Polled Ewe
October Ewe Lamb
Purple Ribbon Farm, Arcola, IL



Illinois Grand Champion Horned Ewe
Yearling Ewe
Galleher Horned Dorsets, Mt. Gilead, OH

HORNED DORSETS

-Yearling Ewe (1 head avg. \$475):

1)**Grand Champion:**Galleher Horned Dorsets, OH to William, Aycock, Remlap, AL \$475

-Fall Ewe Lamb (1 head avg. \$475):

1)**Reserve Grand Champion:**Galleher Horned Dorsets, OH to William Aycock, Remlap, AL \$475

**2 TOTAL LOTS GROSSED \$950
AVERAGING \$475**

Wisconsin Invitational Sale

April 17, 2010

Jefferson, Wisconsin

-Fall Ram Lamb (2 head avg. \$250):

1)**Grand Champion:**Cedar Lane Dorsets, WI to Durham Family Livestock, Long Prairie, MN \$300

2)**Reserve Grand Champion:**Daniels Family Dorsets, IL to Wittkopf Family, Pewaukee, WI \$200

-Yearling Ewes (5 head avg. \$285):

1)**Reserve Grand Champion:**Spilde Dorsets, WI to Jonathan Albright, Rock City, IL \$450

2)Daniels Family Dorsets, IL to Wittkopf Family, Pewaukee, WI \$325

3)Cedar Lane Dorsets, WI to Greg & Sue Mueller, Glencoe, MN \$225

4)Spilde Dorsets, WI to Mac&Marni Shumaker, Stoughton, WI \$225

5)Houfe Dorsets, WI to Bill & Pam Sheahan, Delavan, WI \$200

-Fall Ewe Lamb (3 head avg. \$350):

1)**Grand Champion:**Spilde Dorsets, WI to Jonathan Albright, Rock City, IL \$450

2)Spilde Dorsets, WI to Wittkopf Family, Pewaukee, WI \$300

3)Cedar Lane Dorsets, WI to Mac & Marni Shumaker, Stoughton, WI \$300

-Spring Ewe Lambs (4 head avg. \$231.25):

1)Koerper Dorsets, IL to Jonathan Albright, Rock City, IL \$250

2)MGM Farms, IN to Brandon Loehrke, Waupaca, WI \$225

3)Double C Dorsets to Petersen Sheep, Arlington, MN \$225

4)Daniels Family, IL to Petersen Sheep, Arlington, MN \$225

10 TOTAL LOTS GROSSED \$2,975.00 AVERAGING \$297.50



*Thanks to Billy Wade for all his help on the farm.
We appreciate his expertise over the years!*

*Thanks to Mona Lisa Pettersson and crew for all
their hard work on our Ohio Sale consignment.*

RSF 0905

Grand Champion Ram at the 2010 National Dorset Sale

Thanks to Larry Inbody & Family for purchasing him. Also thanks to all our other buyers at the Ohio Dorset Sale as well.

Fall lambs available sired by Mithoefer 9028 (son of "TKO" Haven Point 0750) and spring lambs by RSF 0905 (pictured).

**Look for our entries
at Reno and Sedalia.**

The
Reynolds
& Wopat
Families



REYNOLDS STOCK FARM

One of the Premier Dorset Flocks in the United States

9119 Stayton Road SE • Aumsville, OR 97325 • 503/769-5112 • E-mail: rsf@wvi.com

Cornbelt National Sale

April 24, 2010

Des Moines, IA

-Yearling Rams (5 head avg. \$280):

1)**Reserve Grand Champion:**Sugarloaf Dorsets, MN to Andy Woods, Baylis, IL \$275

2)Wolkow Dorsets, SD to William G. Hanna, Macomb, IL \$350

3)Marvin Koerper, IL to Gregg Junck, LeMars, IA \$325

4)Dvorak Family, MN to Kenneth D. Woodlund, Woodward, IA \$250

5)Fruechte Family Dorsets, SD to Tick Tock Livestock, Arcadia, WI \$200

-Fall Ram Lambs (2 head avg. \$262.50):

1)Daniels Family Dorsets, IL to Andy Woods, Baylis, IL \$200

2)Gene & Marci Sanford, MN to Greg Beueller, Faribault, MN \$325

-Yearling Ewes (7 head avg. \$460.71):

1)**Grand Champion:**Isaiah Bauck, MN to Zachary Bobb, Wever, IA \$900

2)Sugarloaf Dorsets, MN to William G. Hanna, Macomb, IL \$700

3)Daniels Family Dorsets, IL to William G. Hanna, Macomb, IL \$525

4)Wolkow Dorsets, SD to Twin Heart, Blair, NE \$350

5)Tyler Lobdell, IL to William G. Hanna, Macomb, IL \$275

6)Tyler Lobdell, IL to William G. Hanna, Macomb, IL \$275

7)Arndt Acres, MN to Brant Pines, Indianola, IA \$200



**Wisconsin Grand Champion Polled Ram
Fall Ram Lamb
Cedar Lane Dorsets, Manawa, WI**



**Wisconsin Grand Champion Polled Ewe
Fall Ewe Lamb
Spilde Dorsets, Stoughton, WI**

2010 DORSET SPRING SALES RESULTS, cont.

-Early Fall Ewe Lambs (7 head avg. \$412.14):

- 1) Sugarloaf Dorsets, MN to Zachary Bobb, Wever, IA \$600
- 2) Isaiah Bauck, MN to Zachary Bobb, Wever, IA \$625
- 3) Wolkow Dorsets, SD to Arndt Acres, Norwood, MN \$400
- 4) Gene & Marci Sanford, MN to Andy Woods, Baylis, IL \$335
- 5) Marvin Koerper, IL to William G. Hanna, Maccomb, IL \$325
- 6) Wolkow Dorsets, SD to Kyle, Kurt & Kaden Gutormson, Brookings, SD \$300
- 7) Arndt Acres, MN to Fruechte Family Dorsets, Estelline, SD \$300

-Late Fall Ewe Lambs (2 head avg. \$300):

- 1) Fruechte Family Dorsets, SD to Kyle, Kurt & Kaden Gutormson, Brookings, SD \$350
- 2) Lee Donald Olson, IA to Kyle, Kurt & Kaden Gutormson, Brookings, SD \$250

-Jan. Ewe Lambs (7 head avg. \$448.43):

- 1) **Reserve Grand Champion:** Mindy Gibson, MO to Crystal A. Dahlke, Arlington, MN \$900
- 2) Sugarloaf Dorsets, MN to Jonathan Albright, Rock City, IL \$450
- 3) Marvin Koerper, IL to Daniels Family Dorsets, Forreston, IL \$375
- 4) Fruechte Family Dorsets, SD to Hudnut Family, Deep River, IA \$350
- 5) Gene & Marci Sanford, MN to Tim or Kathy Cross, Cannon Falls, MN \$400
- 6) Marvin Koerper, IL to Tom Manning & Family, Beresford, SD \$350
- 7) Lee Donald Olson, IA to Tom Manning & Family, Beresford, SD \$300

-Feb. Ewe Lambs (2 head avg. \$275):

- 1) Wolkow Dorsets, SD to William G. Hanna, Maccomb, IL \$350
- 2) Fruechte Family Dorsets, SD to Tom Manning & Family, Beresford, SD \$200

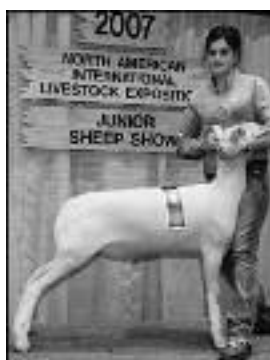
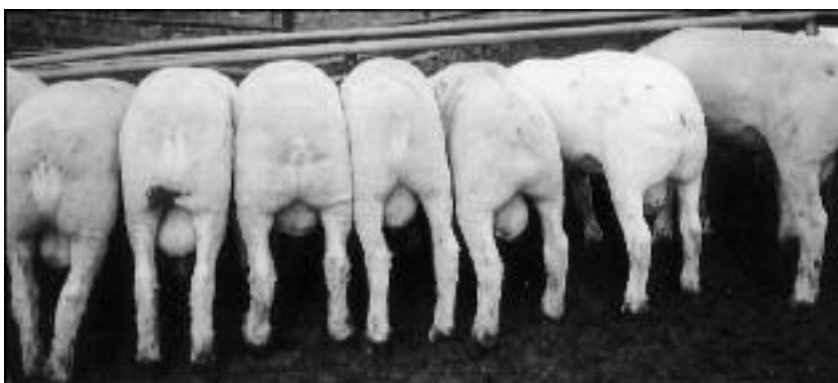
**32 TOTAL LOTS GROSSED \$12,310.00
AVERAGING \$384.69**



The Junior Champion Polled Dorset Ewe drive at the 2010 National Dorset Sale held in conjunction with the 50th Anniversary Ohio Dorset Sale in Eaton, Ohio.

HUNTRODS DORSETS

SINCE 1963



All Sired by Huntrods Rams

When Real Meat Counts... Count On Our Sheep!

Roger Huntrods

Phone: 641/385-2313

3048 Arney Avenue • Collins, Iowa 50055



**Cornbelt Grand Champion Polled Ewe
Yearling Ewe
Isaiah Bauck, New York Mills, MN**

Big Winners at the National Sale!

...The 50th Anniversary Ohio Dorset Show & Sale



"WINDFALL"

Our sincere thanks to Joyce Burnham for all the outstanding work she does fitting and showing our sheep!

**Our
DORSET
HORNS
Never
Looked
Better!!**

We also showed & sold the 2009 Reserve National Champion Ram at Reno!

Reserve National Champion Ram

Sold to Battle Run Farms, Prospect, Ohio.



Reserve National Champion Ewe

Sold to Ridge Betts, Felton, Delaware.

Thanks to Our Buyers at the Ohio Dorset Sale:

- Battle Run Farms, OH
- Ridge Betts, DE
- Patoka Valley Sheep, IN
- Chris Quaka, IL

Our young stud ram "Contagious" Ewephoric H-5 is the most fault-free breeding ram we have ever used. This photo does not do him justice. He is exposed to our flock for fall lambs... watch for them!



Thanks to Our Buyers Privately Off the Ranch:

- Rick Grimme, IN
- Jean Shaw, IA
- JV Ranch, CA
- Melvin Stewart, OH
- McCord Enterprises, OR
- Jay Gray, CA
- A. Hosen, CA

**Everything purchased from us is
100% FULLY GUARANTEED**

Ewephoric! is completely SOLD OUT of sheep born in 2009. We've been overwhelmed with sheep inquiries! Thank you for your trust in our sheep! We sell most of our sheep privately, but we will be consigning and showing a great deal more in 2011. Call or email us if you would like us to ship rams out to you.



Gregg & Marlene Bell
30760 Orange Street • Shafter, CA 93263

1-800-742-5510

www.ewephoric.com
www.cafepress.com/ewephoric
Email: ewephoric@bak.rr.com

Be looking
for Marlene's
new romance
novel
"ANNALISSE"
coming in
2011!



THE
CONTINENTAL
DORSET CLUB, INC

Debra Hopkins, Secretary
P.O. Box 506
North Scituate, RI 02857

No return service requested

Scenes from the 2010 National Dorset Show & Sale

