

# The DORSET *Connection*

A Publication Of The Continental Dorset Club

Volume 13 Issue 1

Winter 2011

## 2010 DORSET FUTURITY RESULTS

The Dorset Ewe Futurity program was another success story in 2010! The program features a polled ewe lamb, horned ewe lamb and a yearling ewe division. Nominations and participation were at high levels once again with the exception of light participation in the horned ewe lamb division. Thanks to the breeders for nominating their lambs and to the junior owners re-nominating their yearling ewes, the program was able to pay above and beyond the guaranteed premium scale. This has been done every year since the inception of the program! Something to be very proud of as a breed.

The CDC board does recognize the fact that certain regions have less participation than others. This is largely due to the fact that these areas don't have as many consignment sales for juniors to

obtain lambs. The Western and

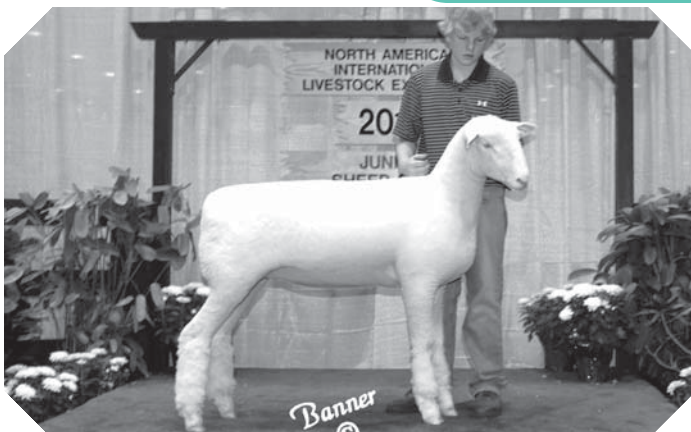
Great Plains regions have had notoriously lower participation. It was suggested that perhaps we could open up the program to allowing private treaty sales. The CDC was wondering if a separate division could be developed for these types of sales. The CDC board would like to hear from the Dorset breeders on the possibility of doing something for the direct off farm sales to encourage even more participation in a great program that allows junior buyers to earn additional funds to help offset the cost of buying quality breeding stock. Please contact Futurity Committee members: Hoop Peterson, Casey Sidwell or Larry Hunter with your thoughts.

Their contact information is on page 3 of this newsletter. Complete 2010 futurity results and more photos are inside on pages 16-17.



**2010 National Polled Dorset Ewe Lamb Futurity Winner**  
Kali Wolkow, DeSmet, South Dakota  
McCarthy 0022

Ewe Bred by: Rory McCarthy, Sycamore, Ohio



**North Central Region 4th Place Polled Dorset Ewe Lamb**  
Kyle Gutormson, Brookings, SD  
McCarthy 0018

Ewe Bred by: Kara McCarthy, Sycamore, OH



**National Dorset Yearling Ewe 2nd Place Winner**  
Keegan Padgett, Kirklin, IN  
PRC W3553

Ewe Bred by: Paul R. Cassell, Wytheville, VA

# HUNTER NUTRITION

## *Your Complete Feeding Program*



### NUTRITIONALLY SUPERIOR! COMPETITIVELY PRICED!

High Selenium & Vitamin E \* Improved Flock Health \* Prevent WMD, Calculi, & Coccidiosis \* Highly Fortified Quality Consistent Feed

#### 40% Lamb Supplement Pellet

A Lamb Grower Supplement for on farm mixing

#### Sheep Mineral

Free Choice Mineral for the Flock

#### 18 Show Lamb

Texturized Show Lamb Feed

#### Show Sheep 165

A Feed for Show Breeding Stock

#### 16 % Lamb Ration

Texturized Lamb Grower Feed

#### Hay Saver Pellet

Hay Alternative

#### 45% Ewe Supplement Pellet

Ewe Flock Supplement Pellet for on farm mixing

#### Texturized Lamb Starter

High Performance Texturized Starter

#### Super 20 Lamb Starter Pellet

Mini-Pellet Lamb Starter Feed

#### Show Lamb 2000

Holding Feed for Show Lambs

#### Animal Health, Vaccines, Sheep Supplies

Good product line, quick shipping

#### Custom Mix Sheep & Lamb Feeds

Texturized, Pelleted, Mineral, Premixes

#### Lamb 1800 and Lamb 1600

Pelleted 18% and 16% Lamb Rations

#### Ewe 12-30 B Ration

Texturized Ewe Flock Feed

#### Ewe 1200 B Pellet

Pelleted 12% Ewe Ration



### SURVIVE!

#### VITAMIN E & ENERGY ORAL DOSER

Saves Newborn Lambs • Fast Acting • Highest Vitamin E  
Level of any Oral Doser • Prevents Vitamin E Deficiencies  
Treats Ketotic Ewes • Gets Cold, Weak Lambs Going



**DON'T FORGET TO ORDER YOUR  
LAMBING SUPPLIES!**



*Ask for our Catalog featuring dozens of sheep feeds, premixes,  
supplements, and free choice mineral. Call us for expert advice  
& premium products to maximize your flocks potential.*

### HUNTER SHEEP NUTRITION

200 N. South Street | P.O. Box 412 | Brookston, IN 47923 | (765) 563-1003

**UPS Shipping • Feed Shipping via Truck**

**www.sheepfeed.com**





# TABLE OF CONTENTS

## Cover:

|   |       |
|---|-------|
| 2010 Dorset Futurity Results.....                               | 1     |
| <b>Table of Contents, Advertisers &amp; CDC Directors</b> ..... | 3     |
| <b>Dorset Calendar</b> .....                                    | 4     |
| <b>CDC President's Message</b> .....                            | 6     |
| <b>Feature Articles:</b>  |       |
| NAILE National Dorset Show Photo Gallery.....                   | 8     |
| Clifford N. Holmquist, Jr.....                                  | 9     |
| 2010 Fall CDC Board Meeting Minutes.....                        | 10-11 |
| <b>Promotional Articles</b> .....                               | 11    |
| <b>Commercial Dorset Connection</b>                             |       |
| Winter Time Farm Planning.....                                  | 12    |
| <b>Announcements:</b>   |       |
| North Central & Eastern Director Elections.....                 | 13    |
| Private Treaty Sale Futurity Division Inquiry.....              | 13    |
| Dorset Wether Registration Required in 2011.....                | 13    |
| MN State Fair Dorset Champion Carcass Lambs.....                | 13    |
| 2011 National Dorset Sale & Annual Meeting.....                 | 13    |
| All-American Spaghetti Supper Fund Raiser.....                  | 13    |
| <b>2010 Dorset Ewe Futurity Results</b> .....                   | 16-17 |
| <b>Youth News:</b>  |       |
| NJDA 2010 Annual Meeting Minutes.....                           | 21    |
| 2011 All-American Junior Show Being Held in Harrington, DE..... | 21    |
| 2011 Regional Junior Show Sites & Eligibility Rules.....        | 21    |
| All-American Junior Show Raffle Information.....                | 21    |
| NJDA Presidents Letter.....                                     | 21    |
| <b>2010 Regional Great Plains Junior Show Results:</b> .....    | 22    |
| <b>2010 NAILE National Dorset Show Results:</b>                 |       |
| Open Polled Show.....   | 24-26 |
| Open Horned Show.....   | 28-29 |
| Junior Polled Show.....   | 30,32 |
| Junior Horned Show.....   | 34    |

## NEWS WORTHY ITEMS WANTED

If you have any Dorset related news items of interest please send them to the Continental Dorset Club Office.

We need your important input to keep this newsletter up to the caliber that it has become and hopefully will remain to be.

# ADVERTISERS

|                              |       |                              |    |
|------------------------------|-------|------------------------------|----|
| Hunter Nutrition.....        | 2     | Royal-S Graphics.....        | 22 |
| Mona Lisa Pettersson.....    | 5     | Michael Pope Dorsets.....    | 23 |
| Advertising Rates.....       | 6     | Reynolds Stock Farm.....     | 26 |
| Van Bair Farm.....           | 7     | Mithoefer Dorsets.....       | 27 |
| Illinois Dorset Sale.....    | 9     | GT Dorsets.....              | 29 |
| Sidwell Dorsets.....         | 13    | Freitas/Bianchi Dorsets..... | 31 |
| Twin Oaks Dorsets.....       | 15    | Star Dust Sheep Farm.....    | 33 |
| McCarthy Polled Dorsets..... | 17    | Lauden Acres.....            | 35 |
| Riverwood Farms.....         | 18-19 | Ohio Dorset Sale.....        | 36 |

## CONTINENTAL CLUB BOARD OF DIRECTORS 2010-2011

### President - Mike Galleher Great Lakes Director

6000 CR 100  
Mt. Gilead, OH 43338  
Phone: (419)946-4582

### Vice President - Melanie Barkley Eastern Director

9027 Hyndman Rd.  
Manns Choice, PA 15550  
Phone: (814)6235756

### Western Director Johnnie Johnson

25265 Carlsbad Ave.  
Davis, CA 95616  
Phone: (530)979-0028

### Great Plains Director Casey Sidwell

31306 WCR 57  
Gill, CO 80624  
Phone: (970)302-9451

### New England Director Alan "Hoop" Peterson

41 Bell Rd.  
Leyden, MA 01337  
Phone: (413)774-5134

### North Central Director Larry Hunter

135 E. Broadway  
Roseville, IL 61473  
Phone: (309)426-2465

### Executive Secretary/Treas. Debra Hopkins

P.O. Box 506  
N. Scituate, RI 02857-0506  
Phone: (401)647-4676  
Fax: (401)647-4679  
E-mail: cdcdorset@cox.net  
www.dorsets.homestead.com

*This publication is produced three times annually by the:*  
**Continental Dorset Club, Inc.**  
North Scituate, RI

# **DORSET CALENDAR**

---

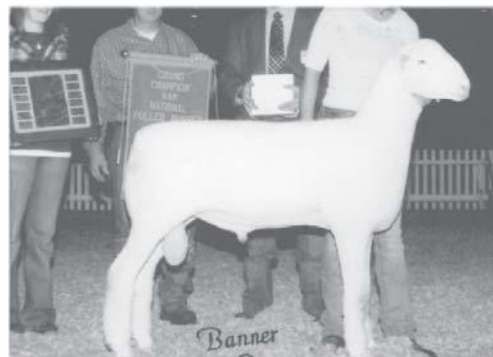
- March 11, 2011: POSTMARK DEADLINE** for Eastern and North Central Director Election Ballots.
- March 18-19, 2011:** Ohio Dorset Sale, Preble County Fairgrounds, Eaton, OH. For further information contact: Saylor Sale Mgm't (937)464-7214
- April 1, 2011: ADVERTISING & INFORMATION DEADLINE** for the Spring 2011 Issue of "The Dorset Connection". Contact: CDC Office (401)647-4676, e-mail: [cdcdorset@cox.net](mailto:cdcdorset@cox.net)
- April 1-2, 2011:** Illini Dorset Sale, Bloomington, IL. Contact Banner Sale Service (309)785-5058 or visit website: [www.bannersheepmagazine.com](http://www.bannersheepmagazine.com)
- April 22-23, 2011:** Wisconsin Invitational Sale, Jefferson, WI. Contact: Banner Sale Management Service (309)785-5058 or visit website: [www.bannersheepmagazine.com](http://www.bannersheepmagazine.com)
- April 23, 2011: TENTATIVE DATE** Ohio Spring Fling Sheep Fitting School, Ohio State Univ., Columbus, OH. For further information contact: Jeremy Etzler [jetzler@att.net](mailto:jetzler@att.net) or visit website: [4hansci.osu.edu](http://4hansci.osu.edu)
- April 29-30, 2011:** National Cornbelt Show & Sale, Iowa State Fairgrounds, Des Moines, IA. Contact Sheep Breeder Sale Management Service (573)442-8257
- May 13, 2011:** All-American Junior Show Spaghetti Fundraiser Supper, 5:00 PM-7:00 PM, Preble County Fairgrounds, Eaton, OH. Contact CDC Office (401)647-4676
- May 28-29, 2011:** Great Lakes Sale, Wayne County Fairgrounds, Wooster, OH. Contact: Banner Sale Management Service (309)785-5058 or visit website: [www.bannersheepmagazine.com](http://www.bannersheepmagazine.com)
- May 20, 2011: ENTRY DEADLINE** for All-American Junior Show, featuring classes for both Polled & Horned Dorsets, Delaware State Fairgrounds, Harrington, DE. Contact: CDC Office (401)647-4676
- June 2-4, 2011:** Nugget All-American Sale, John Ascuaga Casino, Sparks, NV. Contact: Banner Sale Management Service (309)785-5058 or visit website: [www.bannersheepmagazine.com](http://www.bannersheepmagazine.com)
- June 3-4, 2011:** West Virginia Sheep Sale, Tri-County Fairgrounds, Petersburg, WV. Contact: [www.sheepwv.org](http://www.sheepwv.org)
- June 11, 2011:** Northwest Sheep Show & Sale, Kootenai County Fairgrounds, Couer d' Alene, ID. Contact: Kerry Clift (509)968-3451
- June 17-18, 2011:** Keystone Classic Junior Show, Penn State University Livestock Arena, State College, PA. Contact: Stacy Taylor [stctylr@aol.com](mailto:stctylr@aol.com)
- June 20-25, 2011:** National Dorset Sale being held in conjunction with the Midwest Stud Ram Sale, Missouri State Fairgrounds, Sedalia, MO. Dorsets show on Wednesday, June 22 and sell on Friday, June 24. Contact: Sheep Breeder Sale Management Service (573)442-8257
- June 23, 2011:** Annual CDC Board of Directors Meeting, 4:00 PM, Best Western Motel, Sedalia, MO
- June 24, 2011:** Annual CDC Membership Meeting, 7:30 AM, Youth Cafeteria, Missouri State Fairgrounds, Sedalia, MO
- July 1-3, 2011:** All-American Junior Sheep Show, Delaware State Fairgrounds, Harrington, DE. Contact CDC Office (401)647-4676, email: [cdcdorset@cox.net](mailto:cdcdorset@cox.net)
- July 8-9, 2011: SPECIAL DATE FOR 2011:** New England Sale, BIG E Fairgrounds, West Springfield, MA. For entry information contact: Becky Peterson (413)624-5562 or visit website: [www.nesheep.org](http://www.nesheep.org)
- July 8-10, 2011: SPECIAL DATE FOR 2011:** New England Regional Junior Dorset Show, Northeast Youth Sheep Show, BIG E Fairgrounds, West Springfield, MA. Featuring classes for both Polled & Horned Dorsets. Contact: Polled: Pat Poitras (413)283-9852, Horned: Kelly Wright (603)357-5608 or visit website: [www.nesheep.org](http://www.nesheep.org)
- July 13-17, 2011:** Western Regional Junior Dorset Show, California State Fair, Sacramento, CA. Contact: [www.bigfun.com](http://www.bigfun.com)
- July 15-16, 2011:** Crossroads of the West Sale, Deseret Peak Complex, Tooele, UT. Contact: Banner Sale Management Service (309)785-5058 or visit website: [www.bannersheepmagazine.com](http://www.bannersheepmagazine.com)
- August 15, 2011: ADVERTISING & INFORMATION DEADLINE** for the Fall 2011 Issue of "The Dorset Connection". Contact: CDC Office (401)647-4676, e-mail: [cdcdorset@cox.net](mailto:cdcdorset@cox.net)
- August 21, 2011:** North Central Regional Junior Dorset Show, Illinois State Fair, Springfield, IL. Contact: Larry Hunter (309)337-0380, email: [lw-hunter@wiu.edu](mailto:lw-hunter@wiu.edu)
- September 16-21, 2011:** Eastern States Exposition Meat Week Sheep Show with Polled & Horned Dorset Shows, West Springfield, MA. Contact: [www.bige.com](http://www.bige.com)
- October 1, 2011:** Great Plains Junior Regional Dorset Show, Tulsa State Fairgrounds, Tulsa, OK. Contact CDC Great Plains Director Casey Sidwell (970)302-9451.
- October 9, 2011:** Eastern Junior Regional Dorset Show, Keystone International Livestock Expo., PA Farm Show Complex, Harrisburg, PA. Contact: KILE, website: [www.keystoneinternational.state.pa.us](http://www.keystoneinternational.state.pa.us)
- October 14-15, 2011:** New York Bred Ewe Sale, Dutchess County Fairgrounds, Rhinebeck, NY. Banner Sale Management Service (309)785-5058 or visit website: [www.bannersheepmagazine.com](http://www.bannersheepmagazine.com)
- October 15-16, 2011:** Delaware Junior Livestock Exposition, Delaware State Fairgrounds, Harrington, DE. Contact: Delaware Livestock Expo., website: [www.delawarelivestockexpo.com](http://www.delawarelivestockexpo.com)



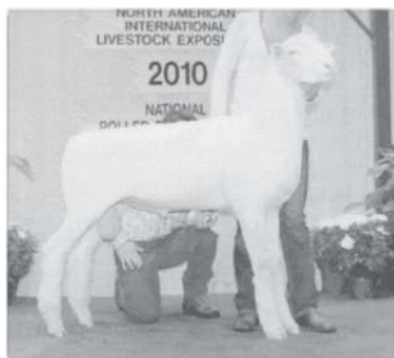


# Pettersson Farms

Dorsets  
Lincolns



2009 NATIONAL CHAMPION RAM  
Pettersson 1923  
Briggen x Pettersson 1764



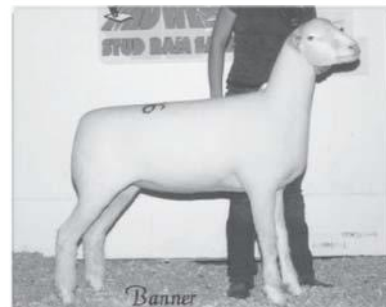
Supreme Champion Ram  
Oregon State Fair  
Pettersson 2070ET  
Briggen x Superior Farms 8027

Its been another  
great year

- Champion Ram, High Selling Ram & Ewe, Reno
- 2nd High Selling Ram, Sedalia
- Premier Breeder, Oregon and California State Fairs

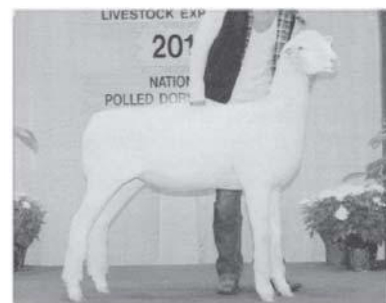
Look **out** our **sales**  
at **the OHIO DORSET**  
**SALE** and other  
sales this spring  
Check out our  
website and  
**facebook**  
**pages** and more  
**mail**

We are very excited  
for our spring lambs  
sired by Briggen,  
1923, 2070ET & 2007



Reserve Senior Champion Ewe  
Midwest Stud Ram Sale  
Pettersson 1911

High Definition x Narrow Lanes 562  
Thank you to  
Cassidy & Elisabeth Ward, MO



Pettersson 2065ET  
Briggen x Ariadne Pettersson 1806ET

**Thank You!**

To all of our buyers who purchased  
sheep at sales and on the farm

[www.PetterssonFarms.com](http://www.PetterssonFarms.com)

## MONA LISA PETTERSSON

1523 Seattle Hill Rd • Bothell, WA • 206/999-6886 • [petterssonfarms@hotmail.com](mailto:petterssonfarms@hotmail.com)



# LETTER FROM CDC PRESIDENT MIKE GALLEHER

**Greetings to everyone from snowy Ohio.**

Each time I write this column, I use the opportunity to encourage, educate, and enlighten the membership. The CDC like many other organizations, businesses, individuals, and governments is facing budget problems. The bottom line is we have more expenses than revenues. To solve this situation, the board needs to either raise our revenues or cut our expenses.

During the past few years the board of directors has added or increased fees to generate more revenue. We have also examined the budget and made as many cuts as possible without affecting services and programs that the board feels are important to the breed.

There are many reasons for the shortfall in the budget (and many opinions as to why as well), not the least of which is the high lamb prices that producers are enjoying. Since our largest source of revenue is registrations and transfers, increasing those would be the logical solution to the problem.

Now here is the encouragement part of the article. It is up to us as breeders and producers to promote our breed. Instead of talking about what is wrong with the breed as a whole, why not publicize what your segment of the breed has to offer. Each type of Dorset has something to offer to those looking to purchase sheep.

Dorsets have many characteristics that make them desirable to the sheep industry. Capitalize on that fact as we try to get more people interested in purchasing our sheep. Register, register, register, and transfer, transfer, transfer!

I look forward to seeing you at one of the sales this spring and summer.

*Mike Galleher, CDC President*

## The **DORSET** *Connection*

### ADVERTISING RATES

Published three times per year by the Continental Dorset Club, Inc.

#### Ad Deadlines

**Spring/Summer Issue:** Ad copy and materials due April 1st (May 15th mailing date)

**Fall Issue:** Ad copy and materials due August 15th (October 1st mailing date)

**Winter Issue:** Ad copy and materials due December 1st (January 15th mailing date)

#### Payment

Payment for all advertising due at time of ad placement. Additional costs for extra artwork or special effects will be billed later. Add \$15 for each photo, **No Proof Pictures Accepted – Only Prints or Digital Photos (high resolution)**. No discounts on photos. Print-ready ads submitted on CD (Mac formatted) or sent via e-mail are accepted and will receive a 15% discount from listed base prices.

#### Contracts

Advertising contracts are also available. Advertisers will receive an additional 10% discount for yearly contracts. Ads must be placed in three consecutive issues and paid in full at the time the first ad is placed. No limitation on ad size.

**NOTE:** The Continental Dorset Club, Inc. reserves the right to reject any advertising or copy that may be objectionable.

Send all advertising materials to:

**DALE SMITH**

Advertising Editor/Designer

17917 Brim Road • Bowling Green, Ohio 43402

Phone: 419/352-2332 Fax: 419/352-2332 E-mail: royal-s@earthlink.net

### Ad Dimensions & Base Prices

|  |   |
|--|---|
|  | 2 Page Ad<br>16" x 9-7/8"<br><b>\$460</b> |
|--|---|

|  |
|--|
| 1 Page Ad<br>7-1/2" x 9-7/8"<br><b>\$290</b> |
|--|

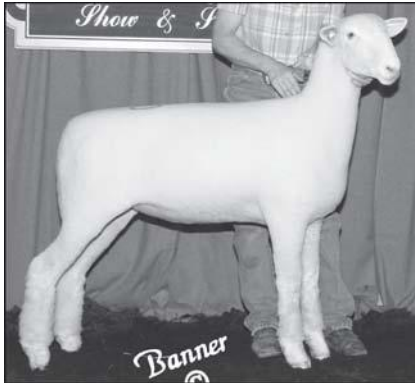
|   |
|---|
| 1/2 Page Ad<br>7-1/2" x 4-15/16"<br>(Horizontal)<br>or<br>4-7/8" x 7-1/2"<br>(Vertical)<br><b>\$175</b> |
|---|

|  |
|--|
| 1/4 Page Ad<br>4-7/8" x 3-3/4"<br><b>\$105</b> |
|--|

|   |
|---|
| Bus. Card Ad<br>3-1/2" x 2"<br><b>\$52 - 1 Time</b><br><b>\$140 - 3 Times</b> |
|---|

**AD PROOFS:** Initial and final proofs are guaranteed to advertisers who send in ad copy and materials by the deadlines noted. Advertising copy received after deadlines will be included on a first come, first serve basis, time and space permitting.

# OUR BROOD EWES ARE OFFSPRING OF THE ICONS OF THE DORSET BREED!



**VanBair 2X02**

6th Place Early Fall Ewe Lamb  
2010 Ohio Dorset Sale

*We only breed naturally  
for fall lambing...we  
simply open the gate,  
the rams walk in, and  
BINGO...lambs!*

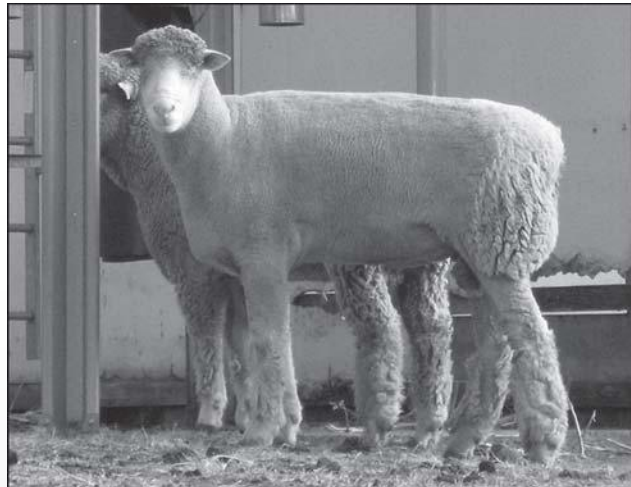
• • • • •  
"Bad Attitude"  
"Vision"  
PSU 9804  
"Razmatazz"  
"Heat Seeker"  
• • • • •



**VanBair 2X14**

2nd Place Early Fall Ram Lamb  
2010 Ohio Dorset Sale

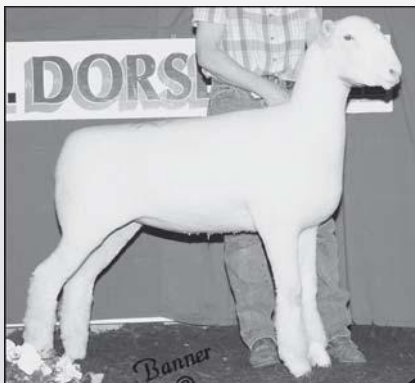
*We are consigning  
4-5 head at both the  
Ohio Dorset Sale and  
Illini Dorset Sale. We  
feel they are our best  
to sell in quite a few  
years! Look for Joyce  
Burnham again this  
year who will be fitting  
and showing our sheep.*



**VanBair 2X11**

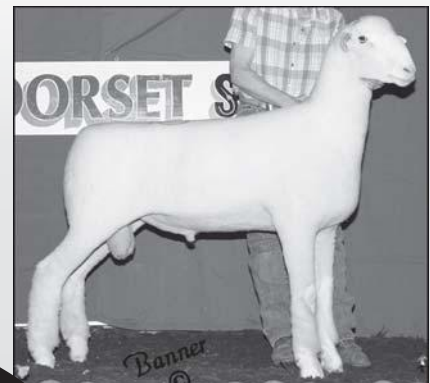
**This Outstanding Stud  
Prospect Sells in Ohio!**

*We have cut way back from  
our big show and sale years.  
Therefore, we will be selling  
sheep we would normally  
have kept back!*



**VanBair 2X07**

2nd Place Sept. Ewe Lamb  
2010 Illini Dorset Sale



**VanBair 2X16**

4th Place Sept. Ram Lamb  
2010 Illini Dorset Sale

**VAN BAIR FARM**



**Mike VanWagner**  
**Wendy VanWagner**

*Dorsets With Attitude And Excitement!*  
**P.O. Box 423 - Dauphin, PA 17018**

**Phone: 717/921-8683**  
**Fax: 717/921-2314**



## FEATURE ARTICLES

### 2010

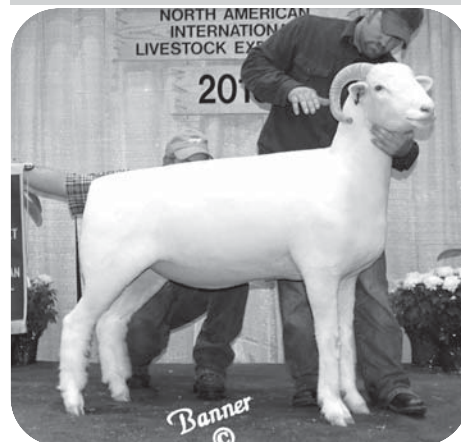
## NAILE NATIONAL DORSET SHOWS PHOTO GALLERY



2010 Don Morehead Memorial Award  
Grand Champion Polled Ram-Yrl. Ram  
"Wouldja" Ram & Ewe Farm 0475 F  
Paul & Nancy Wissinger, PA



Grand Champion Horned Ram  
Spring Ram Lamb  
Gadsby G006  
Grace Gadsby, Stoneboro, PA



**Left:** Grand Champion Polled Dorset  
Ewe - Spilde 8278. Shown by  
Superior Farms, Yukon, OK.

**Below Left:** Champion Dorset Wether  
shown by Kassie Winn, Estancia, NM.  
Bred by Star Dust Sheep Farm, KS.

**Directly Below:**

Winning State Flock Polled Dorset  
Junior Show - Illinois : Thomas Crome,  
Ethan Hodel, Sarah Moore and  
Sidney DeVries.

**Right:** Grand Champion Horned Ewe -  
Gadsby 1056 and shown by  
Grace Gadsby, Stoneboro, PA.

**Below Right:** Polled Dorset Junior  
Show Senior Showmanship Class  
Winner Tirzah Rasys, Brimfield, MA.

**Bottom Left:** National Polled Dorset  
Show Premier Exhibitor  
Superior Farms, Yukon, OK.

**Bottom Right:** National Horned Dorset  
Show Premier Exhibitor  
Grace Gadsby, Stoneboro, PA.



## CLIFFORD N. HOLMQUIST, JR.

Clifford N. Holmquist, Jr. 57, of Chelsea, Maine passed away suddenly and unexpectedly at his farm on the evening of October 28th, 2010. Cliff was born August 23rd, 1953 in Rumford, Maine and spent his entire life in his favorite home state of Maine making his living as a professional 18 wheeler truck driver and a Farmer.

He was hired as a young man as the Draft Horse Herdsman for Sunrise Acres Farm in Cumberland, Maine for many years overseeing the management, training and showing of a large set of Belgians. Cliff was a very accomplished Horseman and could drive a 6 Hitch skillfully and eloquently which he did at many fairs, shows and parades. Some of his favorite memories during those years were to be plowing ground in the Spring time before sunrise on a large flat stretch of black soil turning it over with 3 Draft horses abreast.

Cliff loved driving his 18 wheeler for 30 plus years and was awarded several Safe Driving Awards and was even given special recognition for saving another Driver's life after pulling that person out of his crushed truck before another rig came down a steep hill and hit it in a bad ice storm.

Cliff was married for 32 years to his best friend, Debby-Jo; whom he met at a sheep show – the Fryeburg Fair in Maine. He was also always proud to say he was the Dad to Hannah Spittler – a daughter he truly was proud of and adored. Cliff was so happy and proud to see Hannah be married this past June in Illinois to his beloved Son In Law, Juston Spittler and see them purchase their own beef cattle farm.

Cliff, Debby-Jo and Hannah were the founders of the popular Sugarloaf Dorset Flock from Kingfield, Maine which they started together in the late 70's known originally as West View Farm located in Augusta, Maine. Cliff always bragged to all his sheep friends that he was the "official whatever" of the Farm, overseeing many tasks but especially always making sure the sheep trailer was packed perfectly to his specifications, (if not, it was known to be all hauled off by him and repacked again to his liking before the road trip was to commence) and he was their "official" driver, spending countless hours and thousands of miles ensuring the flock and family always got to their destination on time and safely all around the country.

Some of Cliff's fondest memories

were watching his beloved Daughter, Hannah grow up with sheep, showing and learning all through her 4-H career in both sheep and beef cattle and watching her progress on to her professional livestock career as a top fitter and showman nationwide. Cliff was never a person to brag about anything, but he would always make sure people on the sidelines knew Hannah was his daughter while she was in the show ring.

Cliff loved to visit with all his sheep friends at the Fairs and shows and sales, especially seeing and visiting with Rod Crome, Billy Wade, Dave & Kathy Harmann, Craig Fleck, Gregg Bell, Deb

Deakin, Mark & Debi Bell, Tom Henry, Paul Wissinger and Kevin and Sara Kuykendall. He had the true gift of gab and a very warm, friendly and jovial personality.

Cliff's favorite times the past few years have been spending his days when he could out be on his favorite hay fields riding his tractor making thousands of bales of hay. He was laid to rest in Randolph, Maine overlooking one of those beautiful hay fields near his farm.

Cliff was immensely loved and cherished and will be sorely missed by his adoring family and his many sheep friends coast to coast.



# NOTE NEW LOCATION FOR BOTH! ILLINI ALL-BREEDS SPRING SALE

FRIDAY & SATURDAY  
**APRIL 1 & 2**  
INTERSTATE CENTER  
BLOOMINGTON, ILLINOIS

**SALE HEADQUARTERS:**  
HOLIDAY INN EXPRESS (BESIDE THE INTERSTATE CENTER) • 309/820-9990 • STATE BLOCK NAME "SHEEP SALE" FOR DISCOUNTED RATE!

**SCHEDULE:**

|   |   |
|---|---|
| <p><b>FRIDAY • 2:00 P.M.</b><br/>ILLINI DORSET SHOW<br/><b>SATURDAY • 9:00 A.M.</b><br/>ILLINI ALL-BREDS SHOW</p> | <p><b>SATURDAY, 12 NOON</b><br/>ILLINI DORSET SALE<br/>FOLLOWED BY THE<br/>ILLINI SPRING SALE</p> |
|---|---|



Grand Champion Dorset Ram from  
Crouch Dorsets & Southdowns, IL  
sold to Kolb Dorsets, IL.



Grand Champion Dorset Ewe  
from Purple Ribbon Farms, IL sold  
to Sidney DeVries, IL.



Grand Champion Horned Dorset Ewe  
from Galleher Horned Dorsets, OH  
sold to William Aycock, AL.

**FOR ENTRY INFORMATION &  
FREE SALE CATALOG:**



**PO. BOX 500  
CUBA, IL 61427  
309/785-5058**

**ONLINE ENTRIES AVAILABLE!**

**JUDGE:**  
BRIAN MOHR, CARLOCK, IL

**AUCTIONEERS:**  
TYLER LOBDELL, LENA, IL  
GARY SAYLOR, BELLE CENTER, OH

WWW.BANNERSHEEPMAGAZINE.COM

## FEATURE ARTICLES, cont.

### 2010 CDC BOARD FALL TELE-CONFERENCE MEETING MINUTES

The meeting was called to order by President Mike Galleher at 7:32 PM EST on Thursday, December 9, 2010. Others on-line were: Directors Larry Hunter, Johnnie Johnson, Alan "Hoop" Peterson, Casey Sidwell and Melanie Barkley. CDC Exec. Sec/Treas. Deb Hopkins was also on-line to take minutes.

**-Secretary's Report:** Deb Hopkins presented in writing the meeting minutes from the 2010 Annual Board Meeting held March 18, 2010 in Eaton, OH. Larry Hunter moved to accept the minutes as printed. Johnnie Johnson seconded. Motion carried.

**-Treasurer's Report:** Deb Hopkins presented the current fiscal report for the time period from September 1, 2010 to December 2, 2010. It was reported that total income was \$12,831.82, total expenses were \$21,363.16 for a net loss for the period of \$8,531.34. Account balances were: Checking \$10,095.15, Money Market \$12,093.65, CD \$25,177.52, Savings \$25.00, Junior Association \$9,391.00 for a total of \$56,782.32 on hand. Hoop Peterson moved to accept the treasurer's report. Melanie Barkley seconded. Motion carried. Deb Hopkins reported that the 09-10 fiscal records are at the accountants for the annual tax form filing. Larry Hunter moved not to do the annual report this year, to save cost and the accountant's recommendation that it is not necessary, and just do the tax filing. Hoop Peterson seconded. Motion carried.

**-CDC Stats:** Deb Hopkins reported the current 2010-2011 stats and 522 head have been registered to date and 425 head transferred. Deb Hopkins also reported the year-end stats for 2009-2010. There were 6240 head registered (down 971 head from the previous year) and transferred 3,157 head (down 388 head from the previous year). The top fifteen states in registrations were:

1)Pennsylvania 659 head; 2)Ohio 587; 3)Iowa 540; 4)Indiana 525; 5)Illinois 457; 6)Minnesota 424; 7)California 276; 8)Virginia 257; 9)Wisconsin 240; 10)Oregon 235; 11)Oklahoma 188; 12)Nebraska 182; 13)New York 165 ; 14)Missouri 160; 15)South Dakota 158.

The top fifteen individual registrars were: 1) K Bar K, Ken & Kathy Soder, Petersburg, PA 109 head; 2)Jeffrey A. Hunter, Lafayette, IN 97; 3)VA Tech, Blacksburg, VA 80; 4)Roger Huntrods & Sons, Collins, IA 78; 5)Paul R. Cassell,

Wytheville, VA (Horned) 76; 6)H.F. Sanford & Sons, Faribault, MN 65; 7)Riverwood Farms, Powell, OH 62; 8)Star Dust Sheep Farm, Lincolnville, KS 58; 9)Mona Lisa Pettersson, Bothell, WA 55; 10)-Tie Brent Wastenev Sheep Farm, Shannon City, IA 52; 10)-Tie Brian & Melanie Barkley, Manns Choice, PA 52; 12)-Tie Spilde Brothers, Stoughton, WI 45; 12)-Tie Monte Forster, Tangent, OR (Horned) 45; 12)-Tie Mithoefer Dorsets, Lafayette, IN 45; 15)-Tie Robert Vander Schaaf, Orange City, IA 44; 15)-Tie Superior Farms, Yukon, OK 44.

**-Correspondence:** Deb Hopkins reported that she has received many thank-you notes and letters from participants in the Louisville judging contests.

#### COMMITTEE REPORTS:

**-Dorset Futurity:** Hoop Peterson presented the final futurity standings for the 2010 program. A total of \$4,255 was paid out to 22 participants. Average payout was \$202.62. Awards and rosettes were presented to regional and national winners. There were 174 polled ewe lambs nominated for the program taking in \$4,175 in nomination fees. 50 polled ewe lambs were tattooed for participation. The yearling ewe program had 9 nominations taking in \$225 in nomination fees. The horned ewe lamb futurity had 40 ewe lambs nominated taking in \$875 in nomination fees. 14 horned ewe lambs were tattooed for participation. Discussion ensued on the possibility of doing a futurity for private sales as certain areas of the country has poor participation due to the fact that not many purebred sales exist to get nominated ewe lambs. After much discussion a committee was appointed of Hoop Peterson, Casey Sidwell and Larry Hunter to explore the possibility and present a program at the next meeting.

**-Breed Standard Education:** Melanie Barkley asked for names to act as breed inspectors at the National Sale in Sedalia. The names of Dick Reece, Aaron Crome, Eric Hodel, Dan Shell, Jeff Poynter and Brad Ellerbrock were presented. Deb will contact the people suggested to get two inspectors for the sale. Melanie reported on the manual being developed for breed type education. She is still looking for photos and received no response from the newsletter request. She has asked for pictures at the junior association meeting. Melanie Barkley moved to accept Dan Shell to the certified judges list. Hoop Peterson seconded. Motion carried.

**-Newsletter/Webpage:** Deb Hopkins gave a financial report on the 2010 Fall Issue in which the CDC did incur a \$1738 loss as very little advertising support was

received. Hopefully it will only be a temporary problem. The question was raised about the results only having the names of the exhibitors. The NAILE results do have the flock names of the sheep but the other results only have exhibitors names to save on space which looks like it will have to remain due to the cost of printing.

Webpage is going along smoothly thanks to webmaster Frank Tiffany. Deb has set up a pay pal account and will be working on getting it on the webpage for the online registrations.

**-Dorset Breeder Excellence Program:** Mike Galleher reported that the CDC is waiting for entries as the deadline is the end of the year. Melanie suggested directors to call breeders in their areas to get them to apply.

**-All-American Junior Show:** Deb Hopkins reported that the 2011 All-American will be held in Harrington, DE at the Delaware State Fairgrounds from July 1-3, 2011. Polled and Horned Dorsets will be included with slick shorn classes offered once again. The CDC is soliciting a polled ewe lamb and horned ewe lamb to be sold at spring sales to help support the Dorset Shows. Deb will also have the juniors solicit class donators at the Ohio Dorset Sale and the raffle tickets will be mailed out again directly to Dorset breeders for their support. A meeting was held at Louisville and Bruce Betts & the Passwaters are heading up the efforts in Delaware, and they are making special plans including beach trip and crab fest sponsored by Ketchum Equipment. Aaron Crome and Ryan Hendricks are going to be serving as judges for the 2011 show. In 2012 the All-American Junior Show will be held in Des Moines, Iowa at the state fairgrounds.

**-National Junior Dorset Association:** Deb Hopkins reported they had a good meeting and pizza party as it was well attended in Louisville. The association awarded two \$1000 College Scholarships to Jenna Davis, Chillicothe, OH and Sierra Inbody, Bluffton, OH. To keep generating funds for the scholarship program the group will be doing a gift basket silent auction at the National Sale in Sedalia. They will be looking for donations for this fundraiser. The new 2010-2011 Officers are: President & Eastern Director: Troy Longenecker, PA; Vice President & North Central Director: Sarah Bush, MO; Sec/Treas. & Great Plains Director: Monica Ebert, KS; New England Director: Tirzah Rasys, MA; Great Lakes Director: Tyler Myers OH; Western Director: Johanna DeJoria, OR; Director At-Large: Emily Passwaters, DE.



**-Production Committee:** Melanie Barkley reported that the committee is working on identifying the data fields to be put on the registration certificates and working on finalizing how data would be entered and if an additional cost would be required. Melanie also reported on the educational webinars that have been done and hopes to continue to have one per quarter to emphasize the use of performance data and how breeders can utilize it their Dorset breeding programs. Larry Hunter also mentioned the ram test facility at Western Illinois University and encourages breeders to take advantage of the ram tests around the country.

#### OLD BUSINESS:

**-Registration Program Update:** Deb Hopkins reported that Frank Tiffany has been working out the details on the program and that she has working on using the program trying to get a flow to the registration process for the user.

**-2011 Eastern & North Central Director Elections:** Deb Hopkins reported that the committees were announced in the last newsletter, letters of direction were sent to the committee members and slates of nominees are due in the office by Jan 31.

**-Ideal Statue Development:** The board has put this project on hold due to the financial commitment that the CDC can not take on at this time.

**-Dorset Wether Registration:** Deb Hopkins reported that it was announced in the last newsletter as of January 1, 2011 Dorset wethers will need to be registered in CDC sanctioned shows which include the six regional Dorset shows, the All American and NAILE. The CDC will get a specific wether certificate made up. Deb mentioned that the implementation at NAILE will be difficult due to the show management lack of support suggested to do something different for that show.

Casey Sidwell moved at NAILE the CDC will award \$150 to the Champion Dorset Wether and \$100 to the Reserve Champion Dorset Wether providing the exhibitor produces the lamb's registration certificate with ownership in the exhibitor's name, to the CDC secretary at the time of the show. Melanie Barkley seconded. Motion carried.

**-Spider DNA Testing:** Discussion ensued if spider gene testing should be done in the Dorset breed and the requirements for such a program. It was decided for board members to discuss this with Dorset breeders to get their opinions then address at a later date.

#### NEW BUSINESS:

**-2011 National Sale & Annual Meeting:** The National Sale for both polled and horned Dorsets will be at the Midwest Sale in Sedalia, MO from June 21-24, 2011.

There will be no sale headquarters as it is impossible to get a block of rooms in Sedalia so Dorset breeders are on their own. The Dorsets will show on Wednesday, all breeding sheep and wether type sheep. All the Dorsets will be sold on Friday following the Hampshires and Suffolks, so plan for a late day on Friday. The breed type inspection will be on Tuesday afternoon, the board meeting Thursday afternoon starting at 4PM and the annual meeting will be a pancake breakfast hosted by the Missouri Dorset Breeders on Friday morning at 7:30 AM.

**-NAILE National Dorset Shows:** Deb Hopkins reported that the show results were up on the CDC website and the pictures will be following. 2012 Judge Nominations were selected for the ballots as follows: Polled Dorsets: Bob McCrumb, John Mrozinski, Dan Spilde; Horned Dorsets: Steve Myers, Steve Taylor, Billy Wade. Casey Sidwell moved at NAILE slick shorn champions be selected and

then have them compete with the fitted for an overall Dorset Champion in both the Polled junior and open shows. Johnnie Johnson seconded. Motion carried.

#### **-2011-2012 Printed Dorset Breeders**

**Directory:** Hoop Peterson moved that Banner Publishing do the breeders directory as it has been done in the past, with the possibility of the CDC doing it themselves in the future. Melanie Barkley seconded. Motion carried.

#### **-2011 Regional Junior Dorset Show**

**Sites:** The sites for the upcoming 2011 Regional Dorset Shows are:

-New England: Northeast Youth Sheep Show, West Springfield, MA July 8-10

-Eastern: Keystone International Livestock Exposition, Harrisburg, PA Oct 9

-Great Lakes: Kentucky State Fair, Louisville, KY August

-North Central: Illinois State Fair, Springfield, IL August 21

-Great Plains: Tulsa State Fair, Tulsa OK October 1

-Western: California State Fair, Sacramento, CA July 13-17

Discussion ensued on entry deadline policies for the shows and because each situation is different many scenarios were presented. Basically if the show is part of an existing show then those entry deadlines need to be adhered to. If a show is on its own then the show managers have the right to set their entry policies.

**-2012 National Sale Site:** Sale proposals will be accepted up until the Sedalia board meeting at which time a decision will be made.

Larry Hunter moved to adjourn the meeting. Melanie Barkley seconded the motion. Motion carried. Meeting was adjourned at 10:37 PM.

*Respectively submitted,  
Debra Hopkins  
CDC Exec. Sec./Treas.*

## DORSET PROMOTIONAL ITEMS AVAILABLE

**-Dorset Baseball Caps:** Cotton twill available with either a embroidered Polled Ram Head or Horned Ram Head. Horned hat colors: Maroon with khaki bill or Forest Green with khaki bill. Polled hat colors: Sage Green or Chocolate Brown. **Cost is \$15.00 which includes shipping & handling.**

**-History Book of The Continental Dorset Club & The Dorset Sheep:** This book is 186 pages containing over 300 photos of Dorsets and those who have led the breed. **Cost is \$15.00 includes shipping & handling.**

**-Registration Paper Three Ring Binder:** An 11" x 8 1/2" green vinyl covered 1" wide three ring binder with 10 sheet separators to get you started! CDC logo on front cover. Holds up to 100 sheets. **Cost is \$10.00 includes S & H.**

**-Ram Head Decals:** Polled or Horned ram head available in two sizes. Large 12" diameter and small 6" diameter. **Cost is \$6.00 for the large decal and \$4.00 for the small decal.**

**-Magnetic Bumper Sticker** featuring the CDC Logo and the phrase: "The Breed for all Seasons....The Breed for all Reasons". **Cost is \$2.00 each.**

**-NEW Plastic Travel Bag for Carry-On Liquid Items:** Zippered 8" X 8" Clear Plastic Bag with CDC Logo for air travel carry-on liquid items. **Cost is \$3.00 which includes shipping & handling.**

**SEND YOUR PAYMENT TO:**

**CDC, P.O. Box 506, N.Scituate, RI 02857**

# DORSET COMMERCIAL CONNECTION

## Winter Time Farm Planning

by *Melanie Barkley, Extension Educator*  
*Penn State University*

Right now as I look outside the window, the snow is flying and the sun is trying to peak through the clouds. It is very cold and I would much rather be inside where I am warm. So, it's a great time to take advantage of a little "inside time" to do some farm planning for the spring and summer.

Grain costs are increasing on a daily basis at the moment and maintaining the sustainability of a sheep operation could hinge on how to best use the forage resources on your operation. Have you run a soil test lately on your pasture fields? A great way to do some planning is to use an aerial photo of your farm or ranch and note the various pasture fields. Consider differences in soils, slopes, and topography to determine how to plan what fields and how many need tested for the coming year. Some soil amendments, such as lime, should be added in the fall or over the winter to give the soil pH time to change before the spring growing season.

For many operations, soils differ between pastures and thus different species of forages should be planted to those fields. Thinking back to the last year's growing season, are there fields that were thinning or have large percentages of weeds growing in them? Now is a good time to plan for changes to make these fields more productive. Does the soil fertility need adjusted? Are there other forages species that you would like to introduce into these fields? Do you need to look at weed control options? Don't be too quick to rip up the sod and replant; often pasture production is greatly increased simply by adjusting the soil fertility.

Do you have adequate options for providing water to the sheep in your pastures? Sheep, like any other livestock species, prefer to graze close to a water source. In

large fields, they will tend to overgraze the areas closest to water and spend very little time grazing areas farther away from the water source. Are there options for decreasing the size of some fields and adding another water source to



**Winter time planning for internal parasite control can help to eliminate problems such as the bottle jaw exhibited by this ewe.**

encourage better utilization of the pasture forages? Are there any changes that could be made to the health management program for your sheep? What were your major challenges last year and what adjustments to management or health care could be made to decrease or eliminate those challenges? These challenges could include anything from internal parasites to diseases to foot problems.

Culling practices can often need adjustments on many livestock operations. Examine ewes critically for udder problems, feet and leg issues, lambing issues, and body condition. As you record lambing information, you might also write down any comments related to lambing: weak lambs, large teats, mothering problems, etc. The CDC office has a great lambing record on cardstock that has a section to write down these comments. Circle the number of the ewe in your records so you don't forget to cull her after her lambs are weaned. You might also leave the tails on lambs that should not be kept for breeding purposes.

Winter is also a good time to set production goals for your sheep operation. Are you satisfied with your weaning weights? What is your lambing percentage? Would your operation be more profitable with a higher lambing percentage? Are your ewes capable of raising twins without addition assistance on your part? Answers to these questions can be helpful when looking for that new ram that will continue to advance the profitability of your sheep operation.

For more suggestions on how to evaluate the sustainability of your operation, ATTRA (<http://attra.ncat.org/index.php>) has developed a small ruminant sustainability check sheet that can be found on the internet at <http://www.attra.ncat.org/attra-pub/PDF/ruminantcheck.pdf>. This checklist can help producers take a look at forages, livestock, marketing, records, economics, quality of life and other areas to improve. Even with sheep prices at the highest in history, we can always make plans to become more sustainable with our production methods.



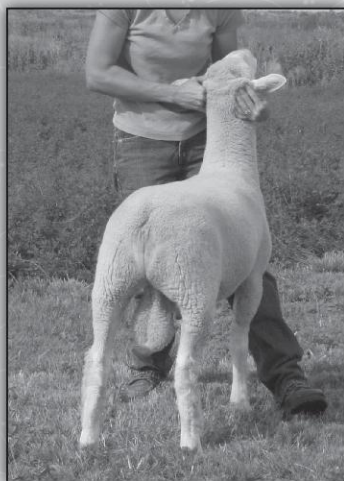
**Winter is a great time to plan for changes that need made to soil fertility or forage species in pastures.**



# SIDWELL SHOW SHEEP

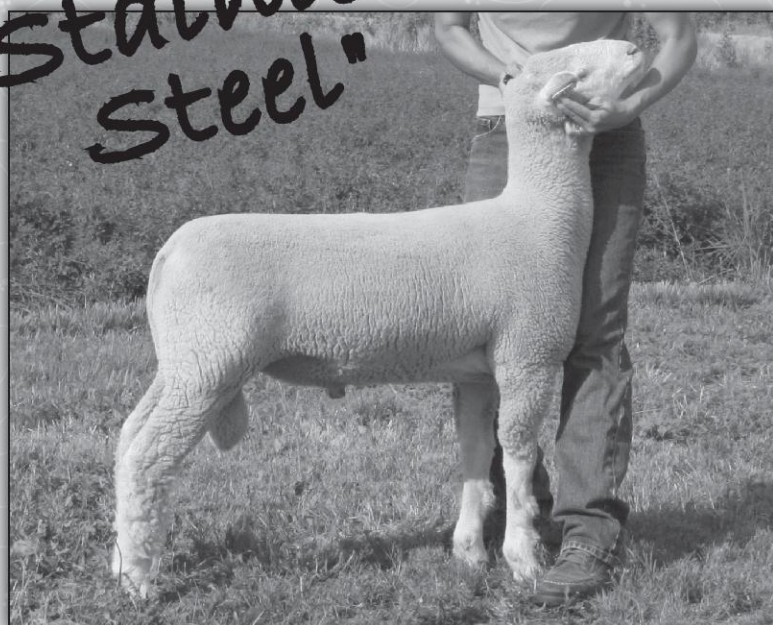
INTRODUCING TWO POWERFUL NEW STUD RAMS FOR 2011 LAMBS.

Sidwell 0064  
S: "Cy" (Enfield Game Over x Huntrods)  
D: Sidwell 7055 (Sidwell 4008)  
Feb, 2010 - QR NN - Twin



(both rams pictured July, 2010)

"Stainless  
Steel"



Hewlett 10  
S: "Grand Cayman"  
D: Hewlett 818 (Grand x Polar Express)  
Jan, 2010 - QR NN - Twin



2011 dorset lambs will be sired by X, Stainless Steel, Max (a 2009 full brother to X) and 4008 (now in his 7th lamb crop). Lambs available in early spring off the farm. We will also consign to the Black and White, and Midwest Stud Ram sales. Visit our website at [www.sidwellhayandcattle.com/sheep](http://www.sidwellhayandcattle.com/sheep) for pictures of more rams, champions and a preview of the 2011 babies.

CASEY SIDWELL - GILL, CO - H:970-356-6117 - C:970-302-9451



## ANNOUNCEMENTS

### NORTH CENTRAL & EASTERN DIRECTOR ELECTIONS

Just a reminder to all CDC lifetime members in the North Central and Eastern Regions that you will be receiving voting ballots in February for your area's director. PLEASE make sure that you fill out these ballots and return to the CDC by the voting deadline. Thank-you in advance for your attention to this very important matter.

### PRIVATE TREATY SALE FUTURITY DIVISION INQUIRY

The CDC Board of Directors have been discussing the possibility of incorporating a private treaty sale division in the futurity program. Ever since the inception of the futurity program certain regions have had poor participation because of the lack of sheep sales in their regions where a junior buyer can get a futurity ewe lamb.

There has been a committee formed of Hoop Peterson, Casey Sidwell and Larry Hunter to explore this possible program development. They are looking for breeder input so if you have any opinions please contact them. Their contact information can be found on page 3 of this newsletter.

The Dorset Ewe Futurity Program continues to be strong and the program wants to continue to encourage our junior breeders to upgrade their breeding programs by purchasing quality breeding stock and being able to earn futurity premiums to help offset the cost of their purchase. A win-win situation for both our Dorset breeders and junior exhibitors.

### DORSET WETHER REGISTRATIONS REQUIRED IN 2011

Just want to remind all our Dorset wether exhibitors that Dorset Wethers will be required to be registered at the CDC sanctioned shows. This includes the six regional junior Dorset shows that have market lamb classes included in the show, the All-American and the shows where the CDC offers the special premiums.

It was amended at the last board meeting to alter the requirement at NAILE due to the problem of enacting the registration requirement. At NAILE the CDC will award \$150 to the Champion Dorset Wether and \$100 to the Reserve

Champion Dorset Wether providing the exhibitor produces the lamb's registration certificate with ownership in the exhibitor's name, to the CDC secretary at the time of the show.

The CDC will provide a specific wether registration certificate. Cost will be \$6.00 to register and if the lamb is sold then the \$5.00 transfer fee will also apply.

Many breeders wonder why a non-breeding animal is being required to be registered but these wethers are being shown as Dorset lambs earning premiums like any other Dorset show animal. The CDC does support the Dorset market lambs in many shows around the country by offering additional premiums and the CDC does recognize the Dorset wether type sheep in their National Sales at sales where wether type sheep are also featured.

The CDC realizes the Dorset breed encompasses many different production types of Dorset sheep and it is the CDC duty to promote all of them. All of this requires financial support and the CDC is just asking our breeders to help provide some of it by registering the Dorsets wethers being show as such.

### MINNESOTA STATE FAIR FEATURES DORSET LAMBS AS CHAMPIONS IN THEIR CARCASS SHOWS

At the 2010 Minnesota State Fair last August the Champions Overall in both their 4-H Lamb Carcass Show and the Open Quality Lamb Carcass Show were purebred Dorsets bred by Roger Karstens of Hutchinson, MN.

The Champion in the 4-H Show was exhibited by Nina Grunzke and the lamb had a rib eye area of 5.2" and the BCTRC percentage was 52.06%. This lamb was selected Champion Carcass Lamb out of the 202 head entered in the event.

Roger Karstens himself exhibited the lamb that was Champion in the Open Quality Lamb Show. This lamb placed first among 42 lambs entered and had a BCTRC percentage of 52.11%. This Dorset lamb was eligible to receive the additional \$500 premium offered by the CDC for a purebred Dorset winning the overall carcass show at the Minnesota State Fair. The CDC does offer these overall awards at several state fairs across the country. Congratulations to Roger and Nina for their accomplishments!

### ALL-AMERICAN JUNIOR SHOW SPAGHETTI SUPPER FUNDRAISER

**FRIDAY, MAY 13, 2011  
BUFFET DINNER  
SERVED  
TAKEOUT BOXES  
AVAILABLE!  
5:00 PM - 7:00PM**

**\$10.00 ADULT  
\$6.00 CHILD UNDER 12**

**PREBLE COUNTY  
FAIRGROUNDS  
EATON, OHIO**

### 2011 NATIONAL SALE & ANNUAL MEETING

The 2011 National Sale for both polled and horned Dorsets will be at the Midwest Sale, Missouri State Fairgrounds in Sedalia, MO from June 21-24, 2011.

The Dorsets will show on Wednesday, Jun 22nd, both the breeding sheep and wether type sheep. Brad Angus will be judging the breeding sheep and Kyle Smithwick will be evaluating the wether type sheep.

All the Dorsets will be sold on Friday, June 24th following the Suffolks and Hampshires, so plan for a late day on Friday.

The breed type inspection will be on Tuesday, June 21st in the afternoon. Since the Dorset wether type sheep are included in the National Dorset Sale they will also be required to be breed type inspected so if the Dorset wether exhibitors could be there on Tuesday afternoon it would be greatly appreciated!

The Annual CDC Membership meeting will be on Friday, June 24th at 7:30 AM in the Youth Cafeteria on the fairgrounds. The Missouri Dorset breeders will be providing us with a great pancake breakfast so please make plans to attend. The National Junior Dorset Association will once again be doing a gift basket silent auction to benefit their scholarship fund.

# 2010 Was A Great Year...Lookin' Good In 2011



*"Scarlet"*

## Reserve Grand Champion Ewe • NAILE

Reserve Grand Champion Ewe 2010 North American International Livestock Exposition, 1st Place Winter Ewe Lamb and Junior Champion Ewe sired by "Optimus Prime" and dammed by a "HD" daughter. She was also a member of our 1st Pair of Ewe Lambs.



*"Gracie"*

## 1st Junior Ewe Lamb NAILE

1st Place Junior Ewe Lamb and a member of our 1st Place Pair of Ewe Lambs at Louisville sired by Shultz 2544 and dammed by a full sister to "Cartel" and "Dirty Deeds".

## Louisville Results!

### Three of the Top Four Sires...

Three of the top four rams for "Sire of the Year" at Louisville were bred by Twin Oaks Dorsets:

- 1st - "Dow Jones" Twin Oaks 615 - Riverwood Farms
- 3rd - "Optimus Prime" Twin Oaks 738
- 4th - "Stimulus" Twin Oaks 801 - Smith Sheep Farm



*"Stella"*

## Reserve Sr. Champion Ewe • NAILE

1st Place Early Yearling Ewe and Reserve Senior Champion Ewe at the NAILE. Congratulations to Gus Ross and Jade Guthrie on a great year with "Stella".

**A big Thank You to everyone that helped us at Louisville...** Sean Beskid, Jade Guthrie, Cruz Nichols and Katherine Kuykendall; and a special thanks to Mike & Leslie Nelsh for all you do!

## See Us at the Sales...

Ohio Dorset Sale, Illini Dorset Sale and the National Dorset Show & Sale at Sedalia.

## THE GARY SAYLOR FAMILY

937/464-7214 • Cell: 937/597-7214

Gary • Becky • Cameron • Kelsey • Cole  
19570 County Road 75 • Belle Center, Ohio 43310  
e-mail: gsaylor@watchtv.net

*"A Driving Force in the Dorset Breed"*



**TWIN OAKS  
DORSETS**



## **2010 Regional Polled Dorset Ewe Lamb Futurity Results**

| <b><u>REGION</u></b> | <b><u>PLACING</u></b> | <b><u>EXHIBITOR</u></b>           | <b><u>BREEDER</u></b>               |
|----------------------|-----------------------|-----------------------------------|-------------------------------------|
| New England          | First                 | Ashley Pinckney, Cayuga, NY       | Van Bair Dorsets, Dauphin, PA       |
| New England          | Second                | Ashley Pinckney, Cayuga, NY       | Mithoefer Dorsets, Lafayette, IN    |
| Eastern              | First                 | Emily Passwaters, Bridgeville, DE | Superior Farms, Yukon, OK           |
| Eastern              | Second                | Rachel Berninger, Wilmington, DE  | Mindy Gibson, Housatonia, MO        |
| Great Lakes          | First                 | Michael Pope, Morristown, IN      | Riverwood Farms, Powell, OH         |
| Great Lakes          | Second                | Michael Pope, Morristown, IN      | Riverwood Farms, Powell, OH         |
| Great Lakes          | Third                 | Deanna Knapke, Rockford, OH       | Riverwood Farms, Powell, OH         |
| Great Lakes          | Fourth                | Jenna Davis, Chillicothe, OH      | Spilde Brothers, Stoughton, WI      |
| Great Lakes          | Fifth                 | Joseph Tedford, Marion, KY        | Smith Sheep Farm, Stewardson, IL    |
| North Central        | First                 | Kali Wolkow, DeSmet, SD           | Rory McCarthy, Sycamore, OH         |
| North Central        | Second                | Kali Wolkow, DeSmet, SD           | Poynter Sheep Farm, Paris, IL       |
| North Central        | Third                 | Sidney DeVries, Freeport, IL      | Twin Oaks Dorsets, Belle Center, OH |
| North Central        | Fourth                | Kyle Gutormson, Brookings, SD     | Kara McCarthy, Sycamore, OH         |
| North Central        | Fifth-Tie             | Sidney DeVries, Freeport, IL      | Twin Oaks Dorsets, Bell Center, OH  |
| North Central        | Fifth-Tie             | Ethan Hodel, Maroa, IL            | Riverwood Farms, Powell, OH         |
| Great Plains         | First                 | Austin Hicks, Stillwater, OK      | Superior Farms, Yukon, OK           |
| Great Plains         | Second                | Austin Hicks, Stillwater, OK      | Superior Farms, Yukon, OK           |
| Western              | First                 | John Bianchi, Hollister, CA       | Mona Lisa Pettersson, Bothell, WA   |
| Western              | Second                | Jackson Christian, Aumsville, OR  | Reynolds Stock Farm, Aumsville, OR  |

### **2010 NAILE POLLED EWE LAMB FUTURITY RESULTS**

### **2010 YEARLING EWE FUTURITY RESULTS**

| <b><u>Placing</u></b> | <b><u>Exhibitor</u></b> | <b><u>Breeder</u></b>  | <b><u>Placing</u></b> | <b><u>Exhibitor</u></b> | <b><u>Breeder</u></b>   |
|-----------------------|-------------------------|------------------------|-----------------------|-------------------------|-------------------------|
| 1st                   | Kali Wolkow, SD         | Rory McCarthy, OH      | 1st-Tie               | Ethan Hodel, IL         | Riverwood Farms, OH     |
| 2nd                   | Michael Pope, IN        | Riverwood Farms, OH    | 1st-Tie               | Sidney DeVries, IL      | Twin Oaks Dorsets, OH   |
| 3rd                   | Michael Pope, IN        | Riverwood Farms, OH    | 2nd                   | Keegan Padgett, IN      | Paul R. Cassell, VA     |
| 4th                   | Kali Wolkow, SD         | Poynter Sheep Farm, IL | 3rd                   | Jonathan Albright, IL   | Isaiah Bauck, MN        |
| 5th                   | Sidney DeVries, IL      | Twin Oak Dorsets, OH   | 4th                   | Rachel Berninger, DE    | Poynter Sheep Farm, IL  |
|                       |                         |                        | 5th                   | Mitchell Donkers, MN    | H.F. Sanford & Sons, MN |

#### **OTHER LOUISVILLE FUTURITY PARTICIPANTS:**

-Ethan Hodel, IL-  
 -Austin Hicks, OK-  
 -Deanna Knapke, OH-  
 -Rachel Berninger, DE  
 -Ashley Pinckney, NY-  
 -Kaden Gutormson, SD-  
 -Kyle Gutormson, SD-  
 -Kurt Gutormson, SD-

#### **OTHER YEARLING EWE NOMINATORS:**

-Mitchell Davis, OR-

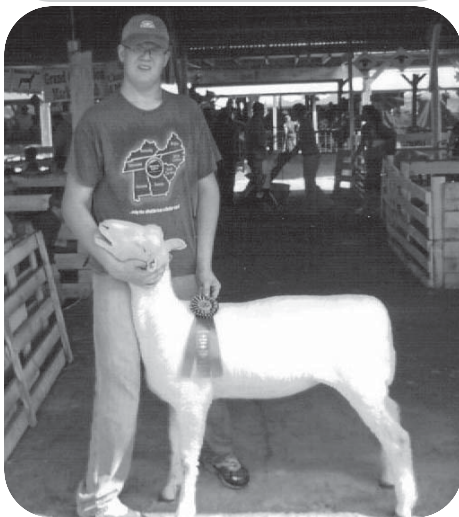
## **2010 National Horned Dorset Ewe Lamb Futurity Results**

| <b><u>PLACING</u></b> | <b><u>EXHIBITOR</u></b>    | <b><u>BREEDER</u></b>            |
|-----------------------|----------------------------|----------------------------------|
| First                 | Ridge Betts, Felton, DE    | Ewephoric, Shafter, CA           |
| Second                | Joseph Tedford, Marion, KY | Brandon O'Dell, Spencerville, OH |

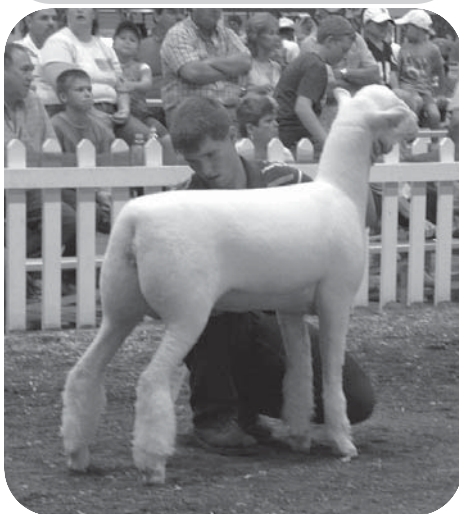




3rd Great Lakes Region Polled Ewe Lamb  
Futurity Winner  
Deanna Knapke, Rockford, OH  
Bred by Riverwood Farms, Powell, OH



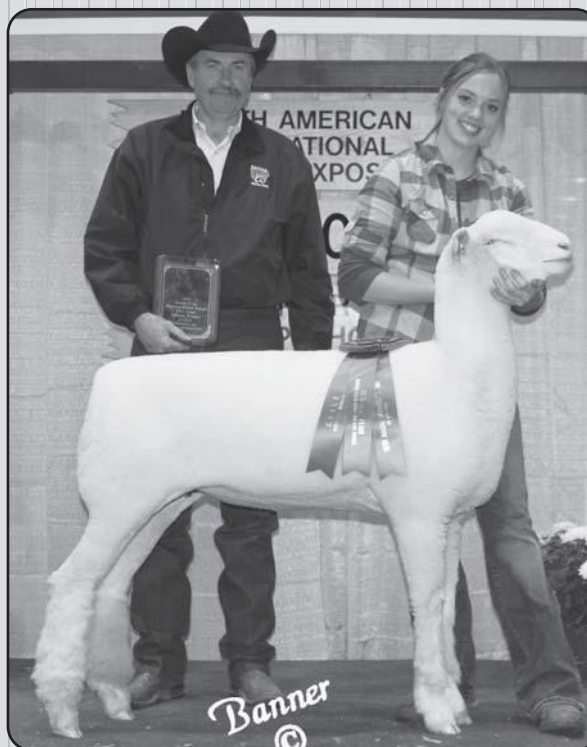
North Central Regional Polled Ewe Lamb  
Futurity Participant  
Jonathan Albright, Rock City, IL  
Bred by Smith Sheep Farms, IL



Great Lakes Regional 2nd Polled Ewe  
Lamb & 3rd National Winner  
Michael Pope, Morristown, IN  
Bred by Riverwood Farms, Powell, OH

# McCarthy

## DORSETS



Our congratulations to Kali Wolkow, De Smet, SD, for her...  
**2010 National Dorset Ewe Lamb Futurity Champion!**  
Kali purchased her winning lamb from our consignment at  
last year's Midwest Stud Ram Sale, Sedalia, MO.

Consigning  
to the  
Ohio Dorset Sale

**McCarthy**  
DORSETS  
Dr. F.D. & Joy McCarthy

Consigning  
to the  
Midwest Stud Ram Sale

5245 Crawford-Wyandot County Line Rd. • Sycamore, OH 44882  
419/310-0590 • E-mail: mccarthy@findlay.edu

### ATTENTION:

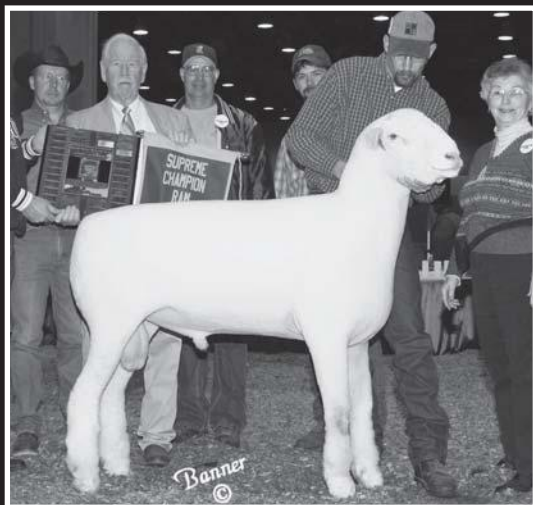
### JUNIOR DORSET BREEDERS

The 2011 Dorset Ewe Lamb and Yearling Ewe  
Futurity Rules and Regulations, Point Record  
Forms and Yearling Ewe Nomination Form can be  
found in its entirety at the CDC Website.

Check it out today at:

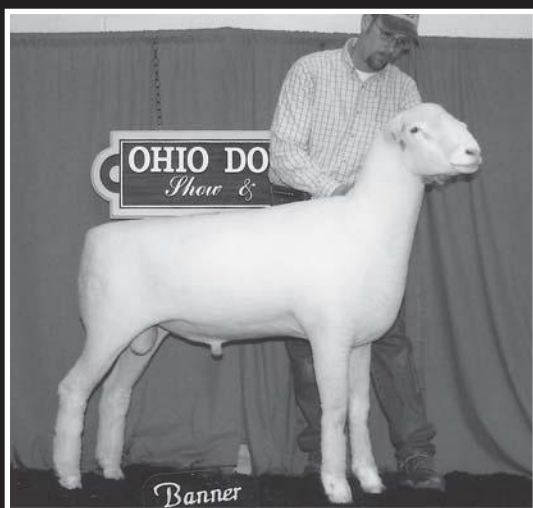
[www.dorsets.homestead.com](http://www.dorsets.homestead.com)

# RIVERWOOD FARMS Has Pro But Where Do They Come From



## **"HIGH DEFINITION" RF 3935 RR**

**2006 NAILE Supreme Champion Ram**  
"Boardwalk" x RF 3035, 2002 National  
Champion Ewe. We sold "High Definition" to  
Twin Oaks and Highfield at Reno in 2005.



## **"PARK PLACE" RF 4496 RR**

**Reserve Jr. Champion Ram 2006 NAILE**  
"Boardwalk" x RF 3877, who was dammed by  
the 2004 National Sale Champion Ewe. Sold  
at the 2007 Ohio Sale to Sugarloaf Dorsets.

## **Sire of the Year Award**

Since its inception in 1992,  
we have been honored to  
win the Downsborough Sire of  
the Year award 10 times,  
with 7 different rams. Some  
may think this is a testament  
of our stud rams. We,  
however, believe it shows the  
consistency and power of our  
brood ewe flock. Trends  
come and go, but great  
females produce every year!



## **"INCISION" RF 4259 RR**

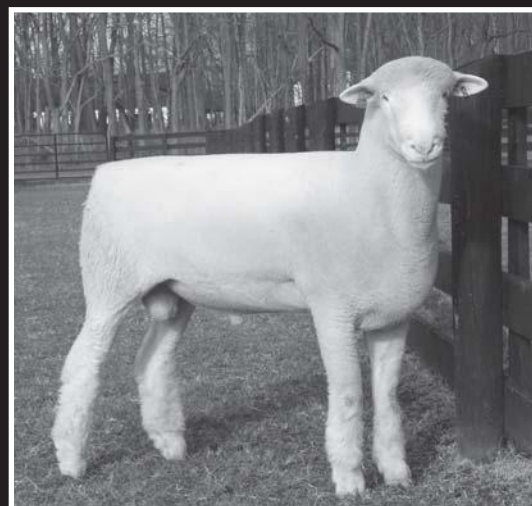
"IntRRoduction" Mithoefer 5012 x RF 3035,  
2002 National Champion Ewe.  
Sold to Reynolds, Spilde and Repasky.

### **Sire of the Year Award at Riverwood Farms**

1992 - "Legacy" CCF 831 QQ  
1993 - "Legacy" CCF 831 QQ  
2002 - "Encore" RF 2013 RR  
2003 - "Profiler" Twin Oaks 911 QQ  
2004 - "Affirm" RF 3059 QQ  
2005 - "Affirm" RF 3059 QQ  
2006 - "Boardwalk" Spilde 6944 RR  
2007 - "Incision" RF 4259 RR  
2009 - "Dow Jones" Twin Oaks 615 RR  
2010 - "Dow Jones" Twin Oaks 615 RR

## **Selling Right From Our Keeper Pen...**

To lower overhead costs, we  
will not be keeping as many  
replacements as normal. We  
will be selling yearling ewes  
and fall ewe lambs right out  
of our keeper pen. So...  
watch for stud ewes of  
tomorrow in our consign-  
ments at the sales this year!!!



## **"PREMIUM PICKLE" RF 5409 RR**

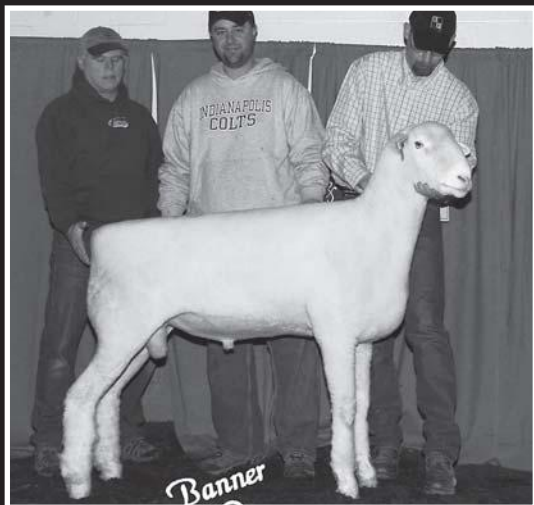
"Primo" x RF 4464, a "Wooden Pickle"  
daughter. Sold to Passwaters.

**Rams Pictured Sold For \$45,000**

*The Source for Super Seedstock with Predictable Genetics!*

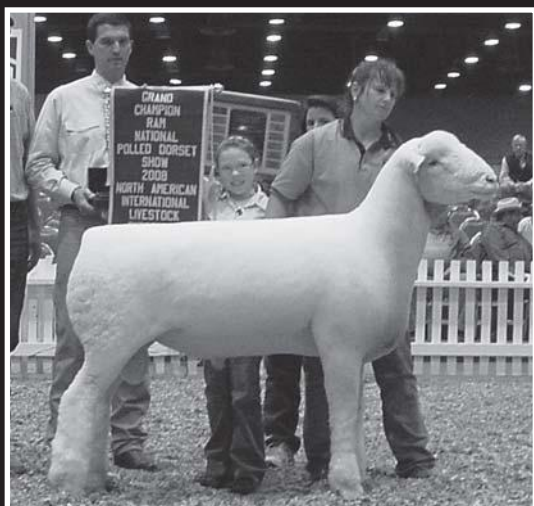


# Produced Some Great Stud Rams. n? Answer: GREAT FEMALES!!



## **"MAIN EVENT" RF 4777 RR**

High Selling Ram 2008 Ohio Dorset Sale  
"Incision" x RF 4366, who was dammed by  
the 2001 Ohio State Fair Champion Ewe.  
Sold to Mithoefer and Stony Point.



## **"PRIMO" RF 4684 RR**

Only Two-Time National Champion Ram  
"Incision" x RF 3873, Super Ewe  
Half interest sold to Pine Ridge Dorsets.

## **Selling At These Sales:**

Ohio Dorset Sale  
•  
Illini Dorset Sale  
•  
Midwest Stud Ram Sale  
(National Sale)

## **Sale Sheep Sired By:**

"Dow Jones", "Primo", "Dynasty",  
"Premium Pickle", "Gemini" (a  
"Quest" son), and RF 5003



## **RIVERWOOD FARMS**

Polled Dorsets  
Dorpers  
White Dorpers  
Lowline Cattle

•  
**JAMES  
KLINGBEIL**  
Owner

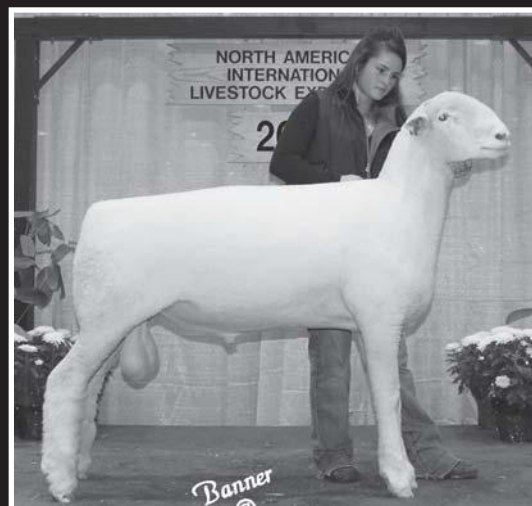
1000 West Powell Rd.  
Powell, Ohio 43065

Barn: 614/885-6268  
Fax: 614/885-2851  
riverwood\_farms@msn.com  
www.riverwoodfarms.com



## **"DYNASTY" RF 5404 RR E.T.**

2010 Ohio State Fair Champion Ram  
"Dow Jones" x RF 4685 ("Primo's" twin)  
Half interest sold to Crome and Poynter.



## **"ELVIS" RF 5406 RR**

"Primo" x RF 4467 ("Encore" x RF 3873\*)  
\* "Primo's mother"  
Half interest sold to Kaitlyn Verhaeghe.

## YOUTH NEWS

### 2010 CDC JUNIOR DORSET ASSOCIATION ANNUAL MEETING MINUTES

The meeting was called to order by President and Eastern Director Troy Longenecker at 7:00 PM at the KY Exposition Center. Introduction of the other board members were made: Vice President and North Central Director Sarah Bush, Great Plains Director Monica Ebert, Western Director Johanna DeJoria and New England Director Kaitlin Lewis arrived later. Troy had the junior members introduce themselves and tell why they like to raise Dorsets. There were about 60 people in attendance.

Monica Ebert read the minutes from the 2009 Annual Meeting. Minutes were accepted as read. Monica also presented the 2009-2010 Treasurer's Report. Income was \$2,369.53 and expenses were \$2322.90 for a balance of \$9389.89. Treasurer's report was accepted as read.

#### **Announcements & Reports:**

**-All-American Junior Show:** Sarah Bush gave a report on the 2010 All-American Junior Show that was held in East Lansing, MI. The 2011 All-American Junior Show will be held at Delaware State Fairgrounds in Harrington, DE. The dates of the show are July 1-3, 2011. The Dorset exhibitor barbecue lunch and meeting will be held on Saturday as usual for all the Dorset exhibitors and their families. She reported that Aaron Crome and Ryan Hendricks will be judging. Special activities are being planned for the event.

**-Dorset Futurity Program:** Deb Hopkins reported the regional 2010 Polled Ewe Lamb winners: Eastern: Emily Passwaters with her Superior Farms bred ewe lamb; Great Lakes: Michael Pope with his Riverwood Farm bred ewe lamb; North Central: Kali Wolkow with her McCarthy

Polled Dorsets bred ewe lamb; Great Plains: Austin Hicks with his Superior Farm Dorsets bred ewe lamb; and Western: John Bianchi with his Mona Lisa Pettersson bred ewe lamb. The regional horned Dorset ewe lambs winners were: Great Lakes: Joseph Tedford with his Brandon O'Dell bred ewe lamb and Eastern: Ridge Betts with his Ewephoric bred ewe lamb. Final National placing in the polled ewe lamb, horned ewe lamb and yearling ewe futurity would be determined after the junior show on Sunday. She thanked all the breeders for nominating their ewe lambs and the junior buyers for participating in the program.

**-NAILE Junior Show:** Johanna DeJoria announced that Polled Dorset junior show would be first in one of the rings on Sunday and the Horned Dorsets will be last. The judge would be John Mrozinski. She reminded exhibitors that the owner must be at the head of their animals. She also spoke about the state flock class at the end of the show.

**-Scholarship:** The 2010 Scholarship Winners are Jenna Davis, Chillicothe, OH and Sierra Inbody, Bluffton, OH.

#### **New Business:**

**-Fundraising for 2011:** Troy Longenecker announced the CDC Junior Dorset Association will be holding a gift basket silent auction at the National Dorset Sale in Sedalia, MO. He requested juniors to get baskets together from their different states and get to the event to raise funding for the scholarship program.

**-Election of 2010-2011 Officers:** The following directors were elected: New England: Tirzah Rasys, MA; Eastern: Troy Longenecker, PA; Great Lakes: Tyler Myers, OH; North Central: Sarah Bush, MO; Great Plains: Monica Ebert, KS; Western: Johanna DeJoria, OR; and Director At Large: Emily Passwaters, DE.

While the votes were being tallied, junior Dorset breeder Britton Francis, MO presented his FFA public speaking speech on lamb consumption in the U.S. Britton did a great job and thank-you to him for allowing us to hear his speech.

Tyler Myers motioned to adjourn the meeting and Jenna Davis seconded it. The meeting was adjourned at 7:58 PM. Pizza and drinks were served immediately afterwards to the Dorset junior exhibitors and their families.

#### **Directors Re-organizational Meeting:**

The board members elected the following slate of officers for 2010-2011: President- Troy Longenecker, Vice President- Sarah Bush, and Secretary/ Treasurer- Monica Ebert.

### 2011 ALL-AMERICAN JUNIOR SHOW BEING HELD IN HARRINGTON, DE

The 2011 All-American Junior Sheep Show is going to be held at the Delaware State Fairgrounds in Harrington, DE from July 1-3, 2011. The All-American is the premier junior breeding sheep show in the country and this year will once again feature classes for both Polled and Horned Dorsets. The All-American will once again offer some slick shorn classes in the Polled and Horned Dorset shows. Judges for this year's event will be Aaron Crome and Ryan Hendricks.

If you have never attended an All-American Junior Show please make plans to attend this very special event! It is much more than just a sheep show as there are several activities for the whole family. This year the National Suffolk Junior Show will also be held the same weekend on the fairgrounds so some of the events will be made available to all the exhibitors and their families from both shows. The Delaware folks are excellent hosts and are planning some extra events for the show including a beach trip and a special crabfest on Saturday night sponsored by Ketchum Equipment. Look for more information on the entry form. Entries close May 20th. Check out the All-American Website: [www.allamericanjuniorshow.com](http://www.allamericanjuniorshow.com) for entry information.

The Continental Dorset Club needs to raise funds to support the Dorset shows in the All-American. **Paul & Nancy Wissinger, PA will be donating a ewe lamb to be auctioned off at the upcoming Ohio Dorset Sale to help sponsor the All-American and Joe & Priscilla Crill, IN will be donating a horned ewe lamb.** Your bidding support on these ewe lambs will be very much appreciated.



**2010 National Junior Scholarship Winner Jenna Davis, Chillicothe, OH being presented her award by NDJA President Troy Longenecker.**



**2010 National Junior Scholarship Winner Sierra Inbody, Bluffton, OH being presented her award at the NDJA annual meeting in Louisville.**



Thank-you very much to the breeders for supplying these ewe lambs!

We will also be looking for class sponsors at the upcoming Ohio Dorset Sale and the CDC annual meeting. If you would like to be a class sponsor and will not be in attendance please feel free to contact the CDC Office (401)647-4676 or [cdcdorset@cox.net](mailto:cdcdorset@cox.net) with your sponsorship. The CDC needs to supply about \$2200 to have polled and horned dorset classes at the All-American. Thank-you in advance for your sponsorship!!

**SPECIAL NOTE:** With the All-American being in Delaware on July 4th weekend the folks up in New England have moved up the date of the Northeast Youth Sheep Show in West Springfield, MA to be the following weekend. This was done to enable folks traveling from long distances to be able to attend both prestigious junior events. The National Southdown Junior Show will be featured at the NEYSS and of course it is the New England Regional Junior Dorset Show, featuring classes for both Polled and Horned Dorsets.

## 2011 REGIONAL JUNIOR SHOW SITES AND ELIGIBILITY REQUIREMENTS

Following are the show sites for the upcoming 2011 regional junior shows:

**\*New England** - Northeast Youth Sheep Show, West Springfield, MA, July, 8th-10th (*earlier date for 2011*)

**\*Eastern** -KILE, Harrisburg, PA, Oct 9th

**\*Great Lakes** - Kentucky State Fair, Louisville, KY, August

**\*North Central** - Illinois State Fair, Springfield, IL, August 21st

**\*Great Plains** - Tulsa State Fair, Tulsa, OK, Oct 1st

**\*Western** - California State Fair, Sacramento, CA July 13th-17th

Entry and more details will be printed in the next newsletter but hopefully this will be enough information to start making your show season plans.

**A junior member can show at more than one regional show per calendar year. Also, the upper age limit has changed to where junior exhibitors 21 years old and under as of January 1st of the current year are eligible to show.**

To avoid any confusion, following are the eligibility requirements for these shows as outlined by the CDC:

1) Exhibitor must be a current member of the CDC whether in the youth enrollment program or a lifetime member.

2) Exhibitor 21 years old and

under as of January 1, 2011 is eligible. There is no lower age limit but the exhibitor must be able to lead and/or control the head of his/her animal in the show ring.

3) Exhibitor must be present to show their own animals unless physically impaired. The junior owner will need to be at the head of the animal controlling it in the show ring, unless of course they have more than one entry in a class in which case another junior exhibitor showing their second animal is acceptable.

4) Sheep must be registered in the youth's name. Youth partnerships are acceptable except for futurity animals which must be in the individual youth owner's name ONLY. Farm names or "family" ownerships are not acceptable.

5) Exhibitor can show at more than one regional junior dorset show per calendar year, the CDC strongly encourages juniors to at least show at the regional show in the region in which they reside

6) **EWE FUTURITY PROGRAM:** Your futurity ewe can earn double points at a regional junior show for the futurity ewe program, only the highest regional showing will be doubled, any others will count as a regular show.

Regional junior shows are sometimes held in conjunction with existing shows so there definitely may be other show specific rules and regulations that apply. Please be aware of these requirements when making out your entries.



## LETTER FROM JUNIOR DORSET ASSOCIATION PRESIDENT TROY LONGENECKER

### Dear Junior Dorset Breeders,

I hope everyone had a wonderful winter break and has an outstanding lambing season, with plenty of barn burners to show as well as sell for the 2011 show season. This year we have many events planned for the Junior Breeders. Besides the Regional Shows held across the Country we will all meet in Delaware on 4th of July weekend for the All American Junior Show.

As a Junior Association, this year we need to follow through with our fundraising ideas. In Sedalia at the National Dorset sale, I ask all Junior Board Members, as well as any other members that can contribute to our fundraiser by making silent auction baskets. Two years ago the silent auction went well in Sedalia, and we would like to have repeat success with more baskets. Thanks in advance for your help with this, if you are not attending the sale, please be sure to still send a silent auction basket of any kid along with someone that is going...get creative.

Good luck to all in your endeavors this winter and spring, and hope to see you all at the sales starting in Eaton.

*Sincerely,*

*Troy Longenecker, NJDA President*

## ALL-AMERICAN JUNIOR SHOW RAFFLE TICKETS

**Cost \$5.00 each or 5 for \$20.00**

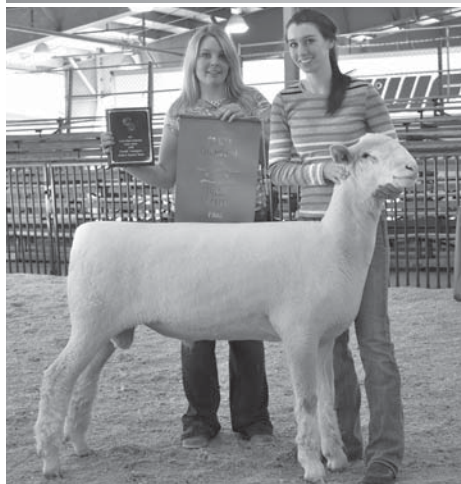
**1st Prize: \$1,000 Cash**

**2nd Prize: Shear Delite Hydraulic Scissor Lift Trimming Stand**

**3rd Prize: 12' X12' Pop-Up Canopy**

**Tickets available at the CDC Office and five tickets will be mailed out with your first registry work of the year. Please take your time to send these tickets back into the CDC Office as last year your support was tremendous!!**

# 2010 Regional Junior Show Results



**Great Plains Regional Show  
Champion Polled Ram - Spring Lamb  
Chelsea Peters, Nevada, TX**

Great Plains Regional Dorset  
Junior Show - October 3, 2010  
Tulsa, Oklahoma  
Judge: Craig Beckmeier

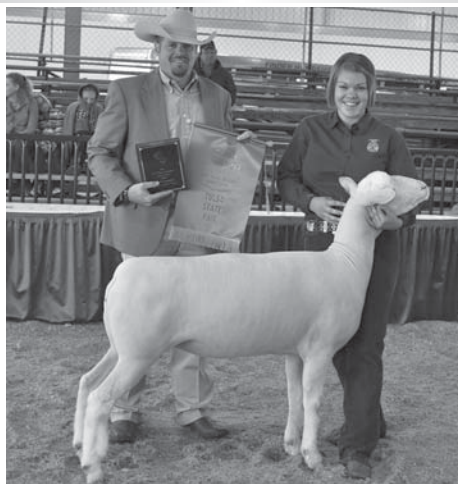
**-Fall Ram Lamb:** 1) & 2)Chelsea Peters, Nevada, TX;

**-Spring Ram Lamb:** 1)**Champion:** Chelsea Peters, Nevada, TX; 2)**Reserve Champion:** Mason Pitts, Stillwater, OK; 3)Monica Ebert, St. George, KS; 4)Zoe Mayes, Chandler, OK; 5)Austin Hicks, Stillwater, OK

**-Yearling Ewe:** 1)**Grand & Senior Champion:** Amber Allen, Burlington, OK; 2)Brooks King, Bixby, OK; 3)Jayson Chesboro, Broken Arrow, OK; 4)Austin Hicks, Stillwater, OK; 5)Chelsey Peters, Nevada, TX; 6)Monica Ebert, St. George, KS; 7)Lauralee Martin, Chandler, OK;



**Great Plains Regional Show  
Res. Champion Polled Ram - Spring Lamb  
Mason Pitts, Stillwater, OK**



**Great Plains Regional Show  
Champion Polled Ewe - Yearling Ewe  
Amber Allen, Burlington, OK**

8)Zoe Mayes, Chandler, OK; 9)Mason Pitts, Stillwater, OK; 10)Chelsey Peters, Nevada, TX; 11)Zoe Mayes, Chandler, OK; 12)Austin Hicks, Stillwater, OK; 13)Monica Ebert, St. George, KS; 14)Madison Henderson, Perry, OK; 15)Lauralee Martin, Chandler, OK

**-Pair of Yearling Ewes:** 1)Monica Ebert, KS; 2)Chelsey Peters, TX; 3)Austin Hicks, OK; 4)Zoe Mayes, OK; 5)Lauralee Martin, OK

**-Fall Ewe Lamb:** 1)**Reserve Senior Champion:** Austin Hicks, Stillwater, OK; 2)Chelsey Peters, Nevada, TX; 3)Mason Pitts, Stillwater, OK; 4)Austin Hicks, Stillwater, OK; 5)Lauralee Martin, Chandler, OK

**-Winter Ewe Lamb:** 1)Whelan Carson, Perry, OK; 2)Monica Ebert, St. George, KS; 3)Caton Elwood, Mutual, OK

**-Early Spring Ewe Lamb:** 1)**Reserve Grand & Junior Champion:** Austin Hicks, Stillwater, OK; 2)Austin Hicks, Stillwater,

OK; 3)Monica Ebert, St. George, KS; 4)Mason Pitts, Stillwater, OK; 5)Anna Capt, Durant, OK; 6)Kylie Elwood, Mutual, OK; 7)Zoe Mayes, Chandler, OK; 8)Bayleigh Wallin, Skiatook, OK

**-Late Spring Ewe Lamb:** 1)**Reserve Junior Champion:** Austin Hicks, Stillwater, OK; 2)Monica Ebert, St. George, KS; 3)Chelsey Peters, Nevada, TX; 4)Madison Henderson, Perry, OK; 5)Mason Pitts, Stillwater, OK; 6)Zoe Mayes, Stillwater, OK; 7)Austin Hicks, Stillwater, OK; 8)Chelsey Peters, Nevada, TX; 9)Zoe Mayes, Chandler, OK; 10)Lauralee Martin, Chandler, OK; 11)Mason Pitts, Stillwater, OK

**-Pair of Ewe Lambs:** 1)Austin Hicks, Stillwater, OK; 2)Chelsea Peters, Nevada, OK; 3)Monica Ebert, St. George, KS; 4)Mason Pitts, Stillwater, OK; 5)Zoe Mayes, Chandler,

## Thanks Sponsors 2010 Great Plains Regional Show

~Ebert Sheep Farm,  
St. George, KS~  
~Leon Hicks Family,  
Stillwater, OK~  
~5D Polled Dorsets,  
Morrison, OK~  
~Gunsmoke Dorsets, Stillwater,  
OK~  
~Evan Snyder,  
Yukon, OK~  
~Continental Dorset Club~



**Great Plains Regional Show  
Res. Champion Polled Ewe - Early Spr. Lamb  
Austin Hicks, Stillwater, OK**

  
**ROYAL~S**  
Graphic Design Services

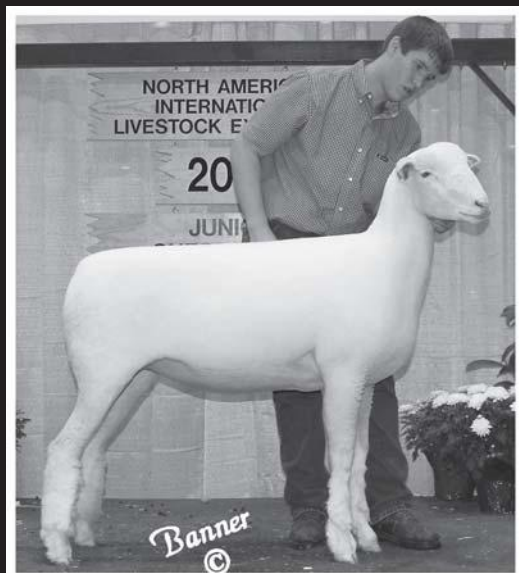
**DALE L. SMITH**  
Owner/Graphic Designer  
royal-s@earthlink.net

*Specializing in the Livestock Industry!*

17917 Brim Road  
Bowling Green, OH 43402  
ph/fx 419.352.2332



# POPE DORSETS



Our two  
Riverwood Farms  
ewe lambs placed 2nd  
& 3rd in the National  
Dorset Ewe Lamb  
Futurity!

**We Had a Great  
2010 Show Season!  
We Can't Wait to  
See Everyone  
in 2011!**

**Special Thanks to  
Everyone Who  
Bought or Bid on  
Our Sheep in 2010!**

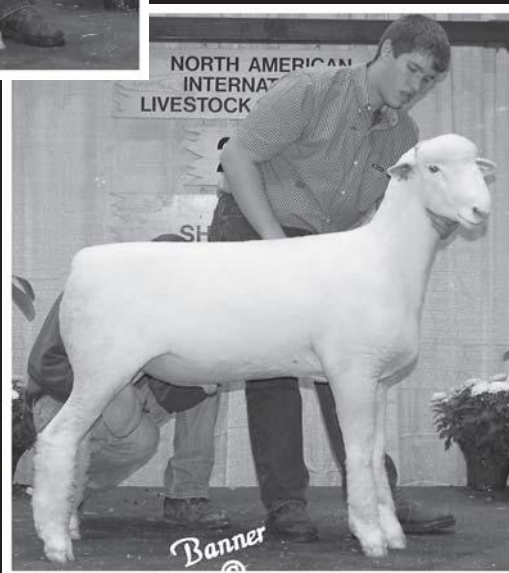
## **Special Thanks to Everyone Who Helped at the Shows!**

Dave Harmann, Jeremy Etzler,  
Dick Reece, Eric Bruns, Jenna  
Davis, Thomas Crome, Tera Fair,  
Anna Trotter, Sarah Trotter, Evan  
Snyder, Dale Smith, Tyler Myers,  
Frank McDaniels, Dusty Knapke,  
Spencer Smith, Sidney DeVries,  
Kaleb Vondenhuevel, Troy  
Longenecker, Mathias Ingle,  
Evan Neese, Kodi Paulus, Mark  
Bell and everyone else who  
made this past year possible!

## **2010 Was A Very Rewarding Year!**

### **Riverwood Farms 5212**

- Champion Ewe at the Great Lakes Regional Jr. Dorset Show
- Reserve Champion Ewe at the North Central Regional Jr. Dorset Show
- Reserve Champion Dorset Ewe at the Indiana Sheep Expo
- 3rd Early Yearling Ewe at the National Jr. Dorset Show
- 3rd Yearling Ewe and member of the 1st Pair of Yearling Ewes at the Kentucky State Fair
- 5th Yearling Ewe and member of the 3rd Place Pair of Yearling Ewes and 3rd Place Flock at the Indiana State Fair
- 6th Early Yearling Ewe at the All American Jr. Show



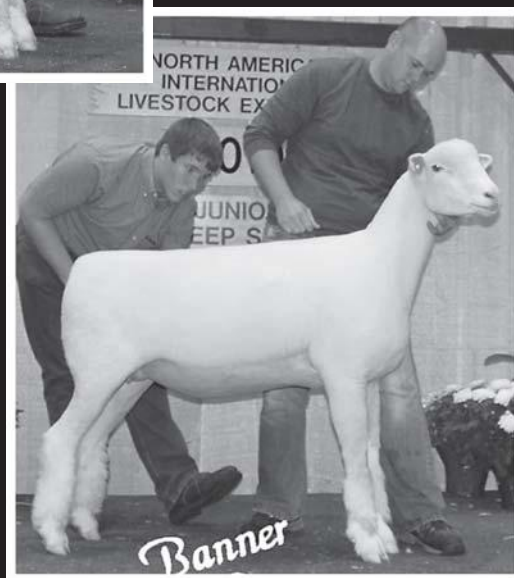
### **Pope Dorsets 79**

- Champion Ram at the North Central Regional Jr. Dorset Show
- 2nd Spring Ram Lamb at the National Jr. Dorset Show
- 3rd Spring Ram Lamb and member of the 3rd Place Flock at the Indiana State Fair

Watch for  
our sale entries at  
the Illini Dorset Sale &  
the National Dorset  
Sale in Sedalia!

### **Superior Farms 9213**

- Reserve Champion Ewe at the Great Lakes Regional Jr. Dorset Show
- 2nd Late Yearling Ewe at the National Jr. Dorset Show
- Member of the 1st Place Pair of Yearling Ewes at the Kentucky State Fair
- Member of the 3rd place Pair of Yearling Ewes and the 3rd Place Flock at the Indiana State Fair



**Michael Pope • 317/966-3091 • Morristown, IN • popedorsets@aol.com**

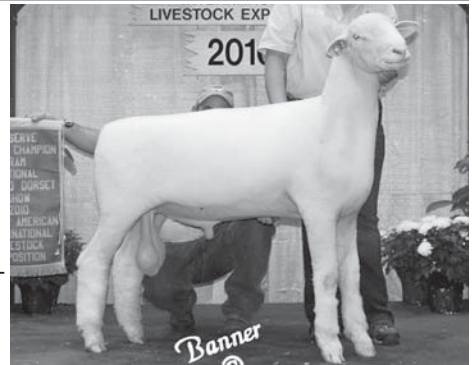
# 2010 NATIONAL OPEN NORTH AMERICAN INTERNATIONAL



**Reserve Senior Champion Ram  
Early Fall Ram Lamb - Riverwood 5406  
Kaitlyn Verhaeghe, Argos, IN**

**- Yearling Ram :**  
1) **Grand & Senior Champion Ram:** "Wouldja", Ram and Ewe 0475F, Paul & Nancy Wissinger, Sinking Spring PA  
2) Nichols 8009, Trent, Cruz & Olivia Nichols, Harrodsburg KY  
3) Superior Farms 9038, Superior Farms, Yukon OK  
4) Riverwood Farms 5143, Pink Ladies Dorsets, Plymouth IN

7) Riverwood Farms 5508, Riverwood Farms Powell OH  
8) Dam Road Dorset 106, Sheahan, Bill & Pam Delavan WI  
9) Maple Hollow 1019 ET, Barkley, Heidi, Manns Choice PA  
10) Cordray Dorset 10-182, Cordray Dorsets Belvidere IL  
11) Turtle Mead 1002, Wissinger, Paul & Nancy, Sinking Spring PA



**Reserve Grand & Jr. Champion Ram  
Winter Ram Lamb - NSLS 9557  
Kristina Repasky, Shakopee, MN**

## **-Early Fall Ram Lamb:**

- 1) **Reserve Senior Champion Ram:** Riverwood Farms 5406, Kaitlyn Verhaeghe, Argos IN
- 2) Highfield 664 ET, Robert & Linda Highfield & Family, Washington Court House OH
- 3) Riverwood Farms 5409, Riverwood Farms Powell OH
- 4) Pine Ridge 0089, Olivia Waggoner, East Berlin PA
- 5) Riverwood Farms 5404 ET, Riverwood Farms Powell OH
- 6) Saylor's Twin Oaks 938, Sean Beskid, Byesville OH
- 7) Peters 127 ET, Peters Polled Dorsets, Nevada TX
- 8) Riverwood Farms 5405, Sidney DeVries, Freeport IL

## **-Late Fall Ram Lamb:**

- 1) **Reserve Junior Champion Ram:** Shaffner 9 F 1005A, Superior Farms Yukon OK
- 2) Bel-Mar Farm 1554, Paulus, Kodi & Kamron Casstown OH
- 3) Mithoefer 0067, Mithoefer Dorsets Lafayette IN
- 4) Ram & Ewe Farm 0574, Ram & Ewe Farm South Solon OH

## **-Slick Shorn Fall Ram Lamb:**

- 1) Thistledown 507, Schembs, Robert Colfax IN

## **-Winter Ram Lamb:**

- 1) **Reserve Grand & Junior Champion Ram:** NSLS 9557, Repasky, Kristina Shakopee MN
- 2) Gibson 1007, Superior Farms Yukon OK
- 3) Pine Ridge 0105, Waggoner, Olivia East Berlin PA
- 4) Bradford/Jenson Partnership 990, Beskid, Sean Byesville OH
- 5) MGM 1003, Murphy, Grace Plymouth IN

## **-Spring Ram Lamb:**

- 1) Nichols 026, Nichols, Trent, Cruz & Olivia, Harrodsburg KY
- 2) Riverwood Farms 547, Riverwood Farms Powell OH
- 3) Gibson 1009, Superior Farms Yukon OK
- 4) Superior Farms 1093, Superior Farms Yukon OK
- 5) McCarthy 0026, Peters Polled Dorsets Nevada TX
- 6) Pettersson 2070ET, Pettersson, Mona Lisa Bothell WA



**Reserve Junior Champion Ram  
Late Fall Ram Lamb - Shaffner 9F-1005A  
Superior Farms, Yukon, OK**

## **-Slick Shorn Winter/Spring Ram Lamb:**

- 1) NOC AT275, Northern Oklahoma College, Tonkawa OK
- 2) Hicks 10-01, Hicks, Austin Stillwater OK

## **-Pair Ram Lambs:**

- 1) Riverwood Farms Powell OH
- 2) Superior Farms Yukon OK

**-Best Headed Ram:** "Wouldja", Ram and Ewe 0475F, Wissinger, Paul & Nancy, Sinking Spring PA

## **-Yearling Ewe Early:**

- 1) **Reserve Senior Champion Ewe:** "Stella" Saylor's Twin Oaks 850, Guthrie, Jade Eaton OH
- 2) Freitas/ Bianchi 833R, Hicks, Austin Stillwater OK
- 3) Shumaker 960, Cordray Dorsets Belvidere IL
- 4) Lauden Acres 657, Repasky, Kristina Shakopee MN
- 5) Riverwood Farms 5258, Riverwood Farms Powell OH
- 6) Saylor's Twin Oaks 847, Superior Farms Yukon OK
- 7) Mithoefer 9016, Mithoefer Dorsets Lafayette IN
- 8) Riverwood Farms 5236, Riverwood Farms Powell OH
- 9) Riverwood Farms 5223, Pink Ladies Dorsets Plymouth IN
- 10) Thornsborough 7, Mithoefer Dorsets Lafayette WI
- 11) Spilde 82, Passwaters, Emily Bridgeville DE
- 12) Thistledown 499, Schembs, Robert Colfax, IN
- 13) Saylor's Twin Oaks 844, DeVries, Sidney Freeport IL

## **-Yearling Ewe Late:**

- 1) **Grand & Senior Champion Ewe:** Spilde 8278, Superior Farms Yukon OK
- 2) HPD 0904, Haven Point Dorsets Volant PA
- 3) Pettersson 1924, Pettersson, Mona Lisa Bothell WA
- 4) Freitas/Bianchi 858G, Verhaeghe, Kaitlyn Argos IN
- 5) Ram & Ewe 0525, Waggoner, Olivia East Berlin PA
- 6) Ram & Ewe 0516, Waggoner, Olivia East Berlin PA
- 7) Bel-Mar- Farm 1490, Paulus, Kodi & Kamron Casstown OH
- 8) Haven Point Dorsets 0920, DeVries, Sidney Freeport IL



**Best Headed Polled Ram  
Yrl. Ram - "Wouldja" Ram & Ewe 0475F  
Paul & Nancy Wissinger, PA**



# POLLED DORSET SHOW

## LIVESTOCK EXPOSITION, LOUISVILLE, KY



**Reserve Senior Champion Ewe  
Early Yrl. Ewe - "Stella" Twin Oaks 850  
Jade Guthrie, Eaton, OH**

9)Bauck 9-42, Kali Wolkow, DeSmet SD  
10)NSLS 9011, Verhaeghe, Kaitlyn Argos IN  
**-Slick Shorn Yearling Ewe:**  
1)Riverwood Farms 5232, Riverwood Farms Powell OH  
2)NSLS 8410ET, Repasky, Kristina Shakopee MN  
3)Parker Farm 074-09, Parker, D. Joel Edinburg IN

4)Riverwood Farms 5146, Pettersson, Mona Lisa Bothell WA  
5)HPD 0849, Haven Point Dorsets Volant PA  
6)Superior Farms 9076, Hicks, Austin Stillwater OK  
7)Riverwood Farms 5225, Riverwood Farms Powell OH  
8)Bradford 903, Superior Farms Yukon OK  
9)Superior Farms 9136, Hicks, Austin Stillwater OK  
10)Pine Ridge 9033, Waggoner, Olivia East Berlin PA  
11)Superior Farms 9225, Superior Farms Yukon OK  
12)Verhaeghe KRV 9508, Verhaeghe, Kaitlyn Argos IN  
13)NOC 131, Northern Oklahoma College, Tonkawa OK  
14)Gunsmoke 025, Northern Oklahoma College, Tonkawa OK  
15)Riverwood Farms 5275, DeVries, Sidney Freeport IL

### **-Pair Yearling Ewes:**

1) Repasky, Kristina Shakopee MN  
2) Riverwood Farms Powell OH  
3) Pettersson, Mona Lisa Bothell WA  
4) Waggoner, Olivia East Berlin PA

### **-Early Fall Ewe Lamb:**

1)RSF 1005, Reynolds Stock Farm, Aumsville OR  
2)HPD 0934, Haven Point Dorsets, Volant PA  
3)Ram & Ewe Farm 0556, Ram & Ewe Farm South Solon OH  
4)Saylor's Twin Oaks 933, Twin Oaks Dorsets Belle Center OH  
5)Spilde 8400, DeJoria, Johanna Newberg OR  
6)Highfield 35-667 ET, Highfield, Robert & Linda, Washington Court House OH  
7)Shaffner 9F 920A, Superior Farms Yukon OK  
8)Highfield 35-666 ET, Highfield, Robert & Linda, Washington Court House OH



**Reserve Junior Champion Ewe  
Late Fall Lamb - Bauck 9-94  
Isaiah Bauck, New York Mills, MN**

9)Spilde 8403, Schembs, Robert, Colfax IN  
10)Pine Ridge 0094, Waggoner, Olivia East Berlin PA  
11)Shepherds View 992ET, Passwaters, Emily Bridgeville DE  
12)Egan 506, Gutormson, Kaden Brookings SD  
13)Narrow Lanes 691, DeVries, Sidney Freeport IL

14)NSLS 9535 ET, Gutormson, Kaden Brookings SD  
15)Saylor's Twin Oaks 934, DeVries, Sidney Freeport IL  
16)Van Bair Farms 2X02, Pinckney, Ashley Cayuga NY  
17)Mithoefer Dorsets 0028, Pinckney, Ashley Cayuga NY  
**-Late Fall Ewe Lamb:**

1)**Reserve Junior Champion Ewe:**  
Bauck 9-94, Bauck, Isaiah New York Mills MN

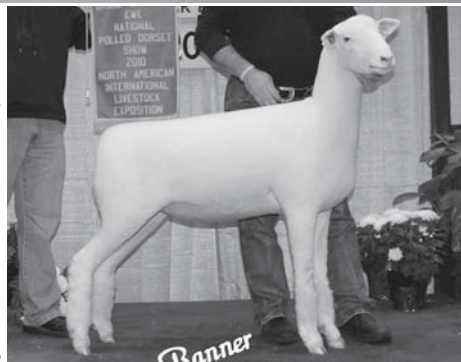
2)HPD 0937, Haven Point Dorsets Volant PA  
3)RSF 1025, Reynolds Stock Farm Aumsville OR  
4)Riverwood Farms 5440, Riverwood Farms Powell OH  
5)Superior Farms 1031 ET, Superior Farms Yukon OK  
6)Highfield 669, Highfield, Robert & Linda, Washington Court House OH  
7)Turtle Mead 0943, Wissinger, Paul & Nancy Sinking Spring PA  
8)Verhaeghe KRV 0535, Verhaeghe, Kaitlyn Argos IN  
9)Riverwood Farms 5429, Knapke, Deanna Rockford OH  
10)Poynter M-7, Wolkow, Kali DeSmet SD  
11)Saylor's Twin Oaks 947, DeVries, Sidney Freeport IL  
12)Haven Point Dorsets 0940, Verhaeghe, Kaitlyn Argos IN  
13)PRF 1051, DeVries, Sidney Freeport IL

### **-Slick Shorn Late Fall Ewe Lamb:**

1)Riverwood Farms 5401 ET, Riverwood Farms Powell OH  
2)NSLS 9523ET, Repasky, Kristina Shakopee MN  
3)Superior Farms 1054, Hicks, Austin Stillwater OK  
4)Superior Farms 1011, Superior Farms Yukon OK  
5)Saylor's Twin Oaks 920, Rincker, Dusty Stewardson IL  
6)Riverwood Farms 5351, Riverwood Farms Powell OH  
7)Shepherds View 995 ET, Passwaters, Emily Bridgeville DE  
8)NSLS 9542 ET, Repasky, Kristina Shakopee MN

### **-Winter Ewe Lamb:**

1)**Reserve Grand & Junior Champion Ewe:** Saylor's Twin Oaks 1001, Twin Oaks Dorsets Belle Center OH  
2)Pettersson 2038ET, Pettersson, Mona Lisa Bothell WA  
3)Sugarloaf Dorsets 0397, Sugarloaf Dorsets Pipestone MN  
4)Mithoefer 0069, Mithoefer Dorsets Lafayette IN  
5)Mithoefer 0068, Mithoefer Dorsets Lafayette IN  
6)Superior Farms 1080, Superior Farms Yukon OK  
7)MGM 1004, Murphy, Grace Plymouth IN  
8)Saylor's Twin Oaks 1004, DeVries, Sidney Freeport IL



**Reserve Grand & Jr. Champion Ewe  
Winter Ewe Lamb - Saylor Twin Oaks 1001  
Twin Oaks Dorsets, Belle Center, OH**



**Best Headed Polled Ewe  
Spring Ewe Lamb - Highfield 670  
Levi Woods, Washington Court House, OH**

## NATIONAL POLLED DORSET OPEN SHOW, CONT.

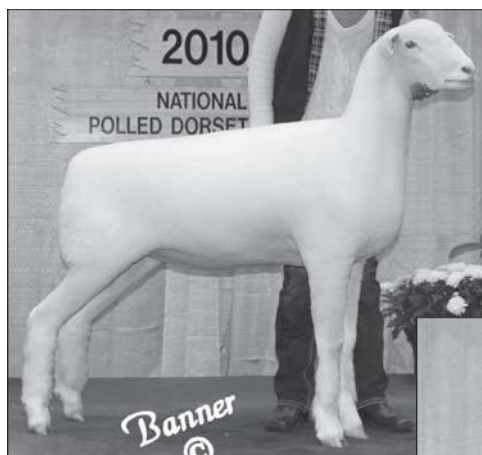
### NAILE, LOUISVILLE, KY

#### -Spring Ewe Lamb:

- 1) Saylor's Twin Oaks 1009, Twin Oaks Dorsets Belle Center OH
- 2) Ram & Ewe Farm 0584, Ram & Ewe Farm South Solon OH
- 3) Haven Pt. & Benedict 1002, Repasky, Kristina Shakopee MN
- 4) Riverwood Farms 5491, Riverwood Farms Powell OH
- 5) "Sweet Apple Pie" Nichols 023, Nichols, Trent, Cruz & Olivia Harrodsburg KY
- 6) Pettersson 2065ET, Pettersson, Mona Lisa Bothell WA
- 7) "Sweet Cherry Pie" Nichols 022, Nichols, Trent, Cruz & Olivia Harrodsburg KY
- 8) Riverwood Farms 5497, Riverwood Farms Powell OH
- 9) Superior Farms 1085, Gibson, Mindy Housatonia MO

- 10) NSLS 10133 ET, Repasky, Kristina Shakopee MN
- 11) Superior Farms 0135, Superior Farms Yukon OK
- 12) Superior Farms 0134, Superior Farms Yukon OK
- 13) Highfield 672, Highfield, Robert & Linda, Washington CH OH
- 14) Gibson 10017, Gibson, Mindy Housatonia MO
- 15) Maple Hollow 1014 ET, Barkley, Heidi Manns Choice PA
- 16) Highfield 670, Woods, Levi, Washington Court House OH
- 17) Highfield 573, Highfield, Robert & Linda, Washington CH OH
- 18) McCarthy 0022, Wolkow, Kali DeSmet SD
- 19) Turtle Mead 1003, Wissinger, Paul & Nancy, Sinking Spring PA
- 20) Sugarloaf Dorsets 0379, Sugarloaf Dorsets Pipestone MN
- 21) Dam Road Dorset 041, Sheahan, Bill & Pam Delavan WI

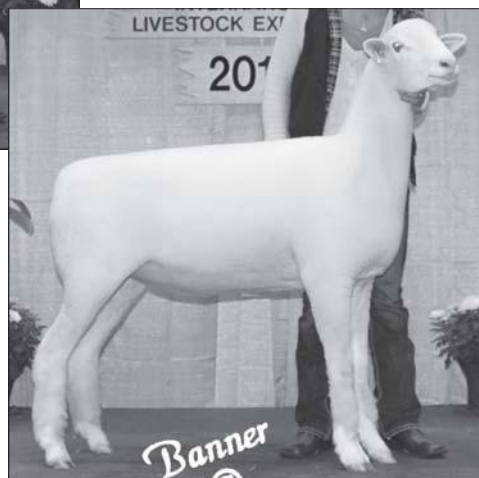
## Louisville Ladies



### RSF 1005

#### 1st Early Fall Ewe Lamb 2010 NAILE • Louisville, KY

Sired by Mithoefer 9028, and out of a "Rumble" daughter.



### RSF 1025

#### 3rd Late Fall Ewe Lamb 2010 NAILE • Louisville, KY

She is also sired by Mithoefer 9028.

We have yearling ewes and an exciting set of fall lambs. Yearling ewes and fall lambs are sired by either Mithoefer 9028, "Rumble", and Reynolds Stock Farm 0905 (our Grand Champion Ram at the 2010 Ohio Dorset Sale).

*Thanks to Billy Wade and Mona Lisa Pettersson for the great job they did with our sheep in Louisville.*

**Look for our entries at the Ohio Dorset Sale!**

The  
Reynolds  
& Wopat  
Families



# REYNOLDS STOCK FARM

*One of the Premier Dorset Flocks in the United States*

- 22) McCarthy 0018, Triple K Dorsets Brookings SD
- 23) Mithoefer 0077, Mithoefer Dorsets Lafayette IN
- 24) Pine Ridge 0169, Waggoner, Olivia East Berlin PA
- 25) Saylor's Twin Oaks 1014, DeVries, Sidney Freeport IL
- 26) Superior Farm 1092, Hicks, Austin Stillwater OK

#### -Slick Shorn Ewe Spring Winter Lamb:

- 1) Superior Farms 1084, Hicks, Austin Stillwater OK
- 2) McMichaels 4M Dorsets 353, Bauerle, Nicholas North Vernon IN
- 3) Meghan Barley 1059, Barkley, Heidi Manns Choice PA
- 4) Riverwood Farms 5451, Riverwood Farms Powell OH
- 5) Superior Farms 0114, Superior Farms Yukon OK
- 6) Verhaeghe KRV 0540, Verhaeghe, Kaitlyn Argos IN
- 7) Gunsmoke 1016, Henderson, Madison Perry OK
- 8) Hurliman 7, Padgett, Keegan Kirklin IN

#### -Pair Ewe Lambs:

- 1) Twin Oaks Dorsets Belle Center OH
- 2) Haven Point Dorsets Volant PA
- 3) Ram & Ewe Farm South Solon OH
- 4) Highfield, Robert Washington Court House OH
- 5) Riverwood Farms Powell OH
- 6) Reynolds Stock Farm Aumsville OR
- 7) Nichols, Trent, Cruz & Olivia Harrodsburg KY
- 8) Pettersson, Mona Lisa Bothell WA
- 9) Repasky, Kristina Shakopee MN
- 10) Passwaters, Emily Bridgeville DE

**-Best Headed Ewe:** Highfield 670, Woods, Levi Washington Court House OH

#### -Flock:

- 1) Repasky, Kristina Shakopee MN
  - 2) Riverwood Farms Powell OH
  - 3) Superior Farms Yukon OK
- Premier Exhibitor:** Superior Farms, Yukon OK

**-Downsborough Sire of The Year:** "Dow Jones" Saylor Twin Oaks 615, Riverwood Farms, Powell, OH



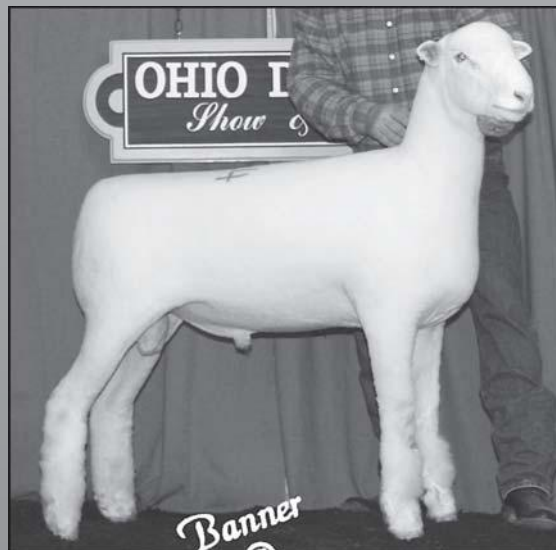


# MITHOEFER DORSETS

## We're Excited About Our Ohio Sale Entries!

**Our Consignment  
Will Feature Lambs  
Sired by "Best Bet"  
(pictured at right)**

"Best Bet" Twin Oaks 622 RR, is a "High Definition" son and was 1st Early Fall Ram Lamb at the 2007 Ohio Dorset Sale. His lambs look exceptional this year and we're excited about showing them to you!



**"Best Bet" ...See his lambs at Ohio!**

**We're Also Offering  
Lambs Sired by  
"Main Event"  
(not pictured)**

"Main Event" RF 4777 RR, was the high selling ram at the 2008 Ohio Dorset Sale where we purchased him, along with Ken Wagner, from Riverwood Farms. He sired our two Champions below.

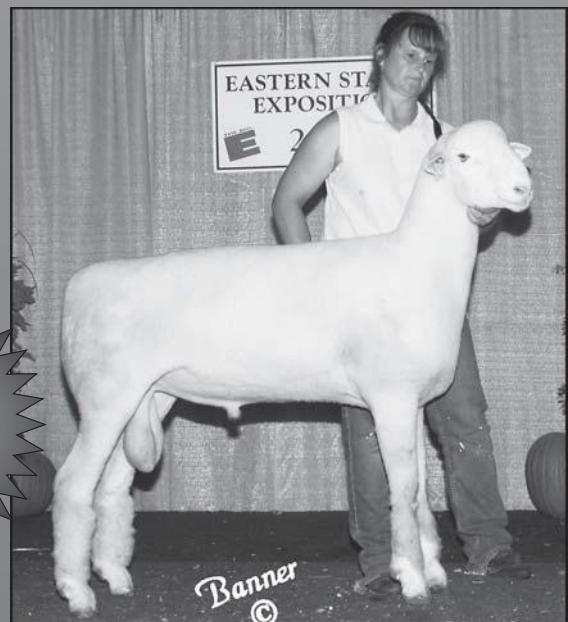


**Mithoefer 9016 – Champion Ewe**

...at the 2010 Big E and Illinois State Fair.  
Sired by "Main Event" and out of Mithoefer 5021.

**We Also  
Encourage  
Your Visits  
And  
Purchases  
At The Farm!**

**In June...  
See Our Entries  
at the National  
Dorset Sale  
in Sedalia,  
Missouri!**



**Mithoefer 0067 – Champion Ram**

...at the 2010 Big E. He was also sired by  
"Main Event" and out of Mithoefer 8004.

*Special thanks to Kevin, Sara and Katherine Kuykendall for another great job with our show flock.  
Watch for them with our show and sale sheep again this year.*

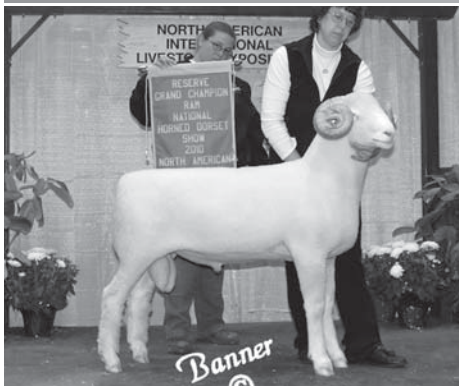
**V.S.E.C.P.**

**Brent Mithoefer 765/564-3228**

9800 E 800 N • Lafayette, IN 47905 • E-mail: [brent.mithoefer@gmail.com](mailto:brent.mithoefer@gmail.com) • Website: [www.mithoefer.com](http://www.mithoefer.com)



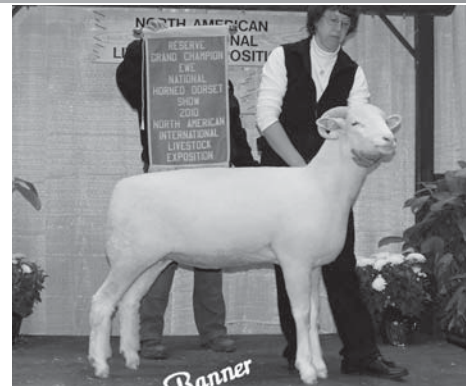
# 2010 NATIONAL OPEN NORTH AMERICAN INTERNATIONAL



**Reserve Grand & Jr. Champion Ram**  
Spring Ram Lamb - PRC 5137  
Christina Shotts, Quincy, OH



**Best Headed Horned Ram**  
Spring Ram Lamb - Cassell W5132  
Austin Grace, Alstead, NH



**Reserve Grand & Jr. Champion Ewe**  
Late Fall Ewe Lamb - Shotts 933  
Christina Shotts, Quincy, OH

## -Yearling Ram:

- 1) **Senior Champion Ram:** Seyon RD 372, Gadsby, Grace Stoneboro PA
- 2) **Reserve Senior Champion Ram:** Shotts 901, Shotts, Christina Quincy OH

## -Early Fall Ram Lamb:

- 1) Gadsby 1065, Houfe, Mike Milton WI

## -Late Fall Ram Lamb:

- 1) Inbody F0961, Inbody, Charles & Sierra Bluffton OH

## -Winter Ram Lamb:

- 1) Shotts 949, Shotts, Christina Quincy OH

## -Spring Ram Lamb:

- 1) **Grand & Junior Champion Ram:** Gadsby G006 E.T., Gadsby, Grace Stoneboro PA
- 2) **Reserve Grand & Reserve Junior Champion Ram:** PRC 5137, Shotts, Christina Quincy OH
- 3) Cassell W5132, Grace, Austin Alstead NH
- 4) Seyon RD 413, Gadsby, Grace Stoneboro PA
- 5) Cassell W5212, Grace, Austin Alstead NH

## -Slick Shorn Ram Lamb:

- 1) Cassell W5286, Padgett, Keegan Kirklin IN

## -Pair Ram Lambs:

- 1) Gadsby, Grace Stoneboro PA
  - 2) Grace, Austin Alstead NH
  - 3) Shotts, Christina Quincy OH
- Best Headed Ram:** Cassell W5132, Grace, Austin Alstead NH

## -Yearling Ewe:

- 1) **Grand & Senior Champion Ewe:** Gadsby 1056, Gadsby, Grace Stoneboro PA
- 2) **Reserve Senior Champion Ewe:** L. Thompson 7111, Gadsby, Grace Stoneboro PA
- 3) PRC W3553, Padgett, Keegan Kirklin IN
- 4) Micaela Nauman 196, Shotts, Christina Quincy OH
- 5) PRC 3734, Shotts, Christina Quincy OH

## -Slick Shorn Yearling Ewe:

- 1) L Thompson 7124, Shotts, Christina Quincy OH
- 2) Kevin Whitmer 0083, Whitmer, Kevin Bradford OH
- 3) Kevin Whitmer 0081, Whitmer, Kevin Bradford OH
- 4) L Thompson 7090, Padgett, Keegan Kirklin IN
- 5) Bauerle 385, Bauerle, Nicholas North Vernon IN

## -Pair Yearling Ewes:

- 1) Gadsby, Grace Stoneboro PA
- 2) Shotts, Christina Quincy OH
- 3) Padgett, Keegan Kirklin IN
- 4) Whitmer, Kevin Bradford OH

## -Early Fall Ewe Lamb:

- 1) Gadsby G001, Gadsby, Grace Stoneboro PA
- 2) Oberholtzer 0907, Zimmerman, Jade East Earl PA

## -Late Fall Ewe Lamb:

- 1) **Reserve Grand Champion & Junior Champion Ewe:** Shotts 933, Shotts, Christina Quincy OH
- 2) Shotts 934, Shotts, Christina Quincy OH
- 3) Kevin Whitmer



**Reserve Senior Champion Ewe**  
Yearling Ewe - L. Thompson 7111  
Grace Gadsby, Stoneboro, PA



**Best Headed Horned Ewe**  
Yearling Ewe - PRC W3553  
Keegan Padgett, Kirklin, IN



**Reserve Junior Champion Ewe**  
Spring Ewe Lamb - Gadsby G6077 ET  
Grace Gadsby, Stoneboro, PA



# HORNED DORSET SHOW

## LIVESTOCK EXPOSITION, LOUISVILLE, KY

0099, Whitmer, Kevin Bradford OH

4)Cassell W5077, Padgett, Keegan Kirklin IN

5)Nauman 217, Inbody, Charles & Sierra Bluffton OH

### -Winter Ewe Lamb:

1)Gadsby G005 E.T., Gadsby, Grace Stoneboro PA

2)Gadsby G004 E.T., Gadsby, Grace Stoneboro PA

3)Shotts 950, Shotts, Christina Quincy OH

4)Spring Hill 0805, Grace, Austin Alstead NH

### -Spring Ewe Lamb:

1)**Reserve Junior Champion Ewe:** Gadsby G007 E.T., Gadsby, Grace Stoneboro PA

2)Gadsby G008 E.T., Gadsby, Grace Stoneboro PA

3)Shotts 1015, Houfe, Mike Milton WI

4)Kevin Whitmer 0087, Whitmer, Kevin Bradford OH

5)Oberholtzer 1007, Zimmerman, Jade East Earl PA

### -Slick Shorn Ewe Lamb:

1)Gadsby G011, Gadsby, Grace Stoneboro PA

2)Shotts 935, Shotts, Christina Quincy OH

3)Gadsby G009, Gadsby, Grace Stoneboro PA

4)Cassell W5118, Padgett, Keegan Kirklin IN

5)Warren Squires 202, Inbody, Charles & Sierra Bluffton OH

### -Pair Ewe Lambs:

1) Gadsby, Grace Stoneboro PA

2) Shotts, Christina Quincy OH

3) Whitmer, Kevin Bradford OH

4) Padgett, Keegan Kirklin IN

5) Inbody, Charles & Sierra Bluffton OH

**-Best Headed Ewe:** PRC W3553, Padgett, Keegan Kirklin IN

**-Flock:** 1) Gadsby, Grace Stoneboro PA

2) Shotts, Christina Quincy OH

3) Padgett, Keegan Kirklin IN

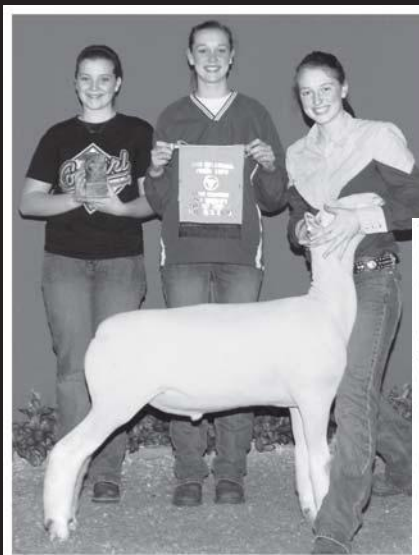
**-Premier Exhibitor:** Grace Gadsby, Stoneboro PA

### ATTENTION HORNED DORSET BREEDERS

NAILE has placed the Open Horned Dorset Show on probation for 2011 as there were less than 50 head shown in 2010. Even though entries were at 60 head they go by the number of head actually shown. Please be aware of this situation and make your best efforts to support the show in 2011. Thanks!

## GT DORSETS

*Imagine What a GT Dorset Can Do for You!*



**Champion Dorset Market Lamb**  
**2010 Oklahoma Youth Expo**  
**Sired by a GT Dorset Ram**  
**Bred by Nathan Dorsets**

**Champion Dorset Market Lamb**  
**2010 Colorado State Fair**  
**Bred by GT Dorsets**



Dave Harmann officially retired from the purebred sheep industry last fall. Dave is shown here at NAILE talking to Margaret Wade and her son Billy at his retirement party. Dave has influenced the Dorset breed by working for Green Mountain Dorsets, Mithoefer Dorsets and most recently Riverwood Farms. Congratulations, Dave!

### GT Dorset Rams Sired the Following Winners in 2010:

- Ch Dorset Mkt Lamb Oklahoma Youth Expo
- Ch AOB Mkt Lamb NAILE
- Ch Speckle Kansas State Fair
- Ch Speckle Kansas Jr. Livestock Show
- Ch WFX Michigan Livestock Expo
- Res Ch 4-H WBI Breeding Ewe Iowa State Fair
- Ch Wool Type Mkt Lamb Western Jr. Livestock Show
- Ch AOB Mkt Lamb Ohio State Fair
- Res Ch AOB Mkt Lamb Ohio State Fair

Jerry Gross • 402/720-9198 • Kennard, NE • [www.gtdorsets.com](http://www.gtdorsets.com)

# 2010 NATIONAL POLLED DORSET JUNIOR SHOW

NAILE, LOUISVILLE, KY



**Grand Champion Ram**  
**Spring Ram Lamb - Nichols 026**  
**Trent, Cruz & Olivia Nichols, Harrodsburg, KY**

## -Fall Ram Lamb:

### 1)Reserve Grand

### Champion Ram:

Riverwood Farms  
5405, DeVries, Sidney  
Freeport IL

2)Riverwood Farms  
5406, Verhaeghe,  
Kaitlyn Argos IN

3)Purple Ribbon  
Farms 1064, Crome,  
Thomas Marshall IL

4)Pine Ridge 0089,  
Waggoner, Olivia East  
Berlin PA

5)Bel-Mar Farm 1554,

Freitas/Bianchi 858G,

Verhaeghe, Kaitlyn

Argos IN

2)Superior Farms

9213, Pope, Michael

Morristown IN

3)Freitas/ Bianchi

833R, Hicks, Austin

Stillwater OK

4)Ram & Ewe 0516,

Waggoner, Olivia East

Berlin PA

5)NSLS 9011,

Verhaeghe, Kaitlyn

Argos IN

6)Bel-Mar- Farm

1490, Paulus, Kodi Casstown OH

7)Ram & Ewe 0525, Waggoner, Olivia East Berlin PA

8)Bauck 9-42, Wolkow, Kali DeSmet SD

9)Haven Point Dorsets 0920, DeVries, Sidney Freeport IL

## -Slick Shorn Yearling Ewe:

1)Star Dust 09204, Allen, Amber Byron OK

2)Verhaeghe KRV 9508, Verhaeghe, Kaitlyn Argos IN

3)Pine Ridge 9033, Waggoner, Olivia East Berlin PA

4)Nichols 9045, Nichols, Trent, Cruz & Olivia, Harrodsburg KY

5)Ebert 9045, Ebert, Monica, Saint George KS

6)Superior Farms 9076, Hicks, Austin Stillwater OK

7)Superior Farms 9136, Hicks, Austin Stillwater OK

8)Shaffner 95-113B, Hodel, Ethan Maroa IL

9)Daniels 958, Robbins, Karen Folsom LA

10)MGM 9006, Murphy, Grace Plymouth IN

11)Riverwood Farms 5275, DeVries, Sidney Freeport IL

12)Spilde 8314, Pope, Michael Morristown IN

## -Early Fall Ewe Lamb:

1)Saylor's Twin Oaks 934, DeVries, Sidney Freeport IL

2)Pine Ridge Dorsets 0012, Moore, Sarah Jerseyville IL

3)Pine Ridge Dorsets 0094, Waggoner, Olivia East Berlin PA

4)Shepherds View 992 ET, Passwaters, Emily Bridgeville DE

5)NSLS 9535 ET, Gutormson, Kaden Brookings SD

6)Egan 506, Gutormson, Kyle Brookings SD

7)Pope Dorsets 63, Pope, Michael Morristown IN

8)Spilde 8400, DeJoria, Johanna Newberg OR

9)Narrow Lanes 691, DeVries, Sidney Freeport IL

10)Riverwood Farms 5343, Oliger, Cassidy Hagerstown IN

11)Ram and Ewe Farm 0556F E.T., Sheeley, Kelsey Hillsboro OH

12)Van Bair Farms 2X02, Pinckney, Ashley Cayuga NY

13)Penn State 10043, Trotter, Anna Marysville IN

14)Mithoefer Dorsets

0028, Pinckney,

Ashley Cayuga NY

## -Late Fall Ewe Lamb:

1)PRF 1062, Moore,

Sarah Jerseyville IL

2)Riverwood Farms

5429, Knapke,

Deanna Rockford OH

3)Haven Point Dorsets

0940, Verhaeghe,

Kaitlyn Argos IN

4)Poynter M-7,

Wolkow, Kali DeSmet

SD



**Grand & Senior Champion Ewe**  
**Yearling Ewe - Freitas/Bianchi 858G**  
**Kaitlyn Verhaeghe, Argos, IN**

Paulus, Kodi Casstown OH

6)Peters 127, Peters, Chelsey Nevada TX

7)Jacoby Dorsets 2, Jacoby, Graeme Wauscon OH

8)Saylor's Twin Oaks 938, Beskid, Sean Byesville OH

## -Slick Shorn Fall Ram Lamb:

1)PRF 1054, Pope, Michael Morristown IN

## -Winter Ram Lamb:

1)Millennium Farms 1001, Schakel, Kylie Oxford IN

2)MGM 1003, Murphy, Grace Plymouth IN

3)Pine Ridge 0105, Waggoner, Olivia East Berlin PA

4)Bradford/Jenson Partnership 990, Beskid, Sean Byesville OH

## -Spring Ram Lamb:

1)**Grand Champion Ram:** Nichols 026, Nichols, Trent, Cruz & Olivia, Harrodsburg KY

2)Pope Dorsets 79, Pope, Michael Morristown IN

3)McCarthy 0026, Peters, Chelsey Nevada TX

4)Triple K Dorsets 0179, Gutormson, Kurt Brookings SD

5)Sugarloaf 0324, Wolkow, Kali DeSmet SD

6)Moore 003, Moore, Sarah Jerseyville IL

7)Maple Hollow 1019 ET, Barkley, Heidi Manns Choice PA

8)Shepherds View 1012 ET, Passwaters, Emily Bridgeville DE

## -Slick Shorn Winter/Spring Ram Lamb:

1)T. Myers 8243, Myers, Tyler Rushsylvania OH

2)Hicks 10-01, Hicks, Austin Stillwater OK

3)Pope Dorsets 81, Pope, Michael Morristown IN

4)MGM 1009, Murphy, Grace Plymouth IN

## -Yearling Ewe Early:

1)**Reserve Senior Champion Ewe:** Riverwood Farms 5217, Schakel, Kylie Oxford IN

2)"Stella" Saylor's Twin Oaks 850, Guthrie, Jade Eaton OH

3)Riverwood Farms 5212, Pope, Michael Morristown IN

4)Pine Ridge Dorsets

9127, Rasys, Tirzah

Brimfield MA

5)Poynter Sheep

Farm 9041, Berninger,

Rachel Wilmington DE

6)Spilde 824,

Passwaters, Emily

Bridgeville DE

7)Saylor's Twin Oaks

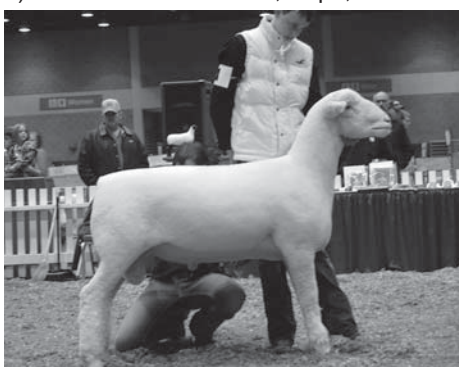
844, DeVries, Sidney

Freeport IL

## -Yearling Ewe Late:

1)**Grand & Senior**

**Champion Ewe:**



**Reserve Grand Champion Ram**  
**Fall Ram Lamb - Riverwood Farms 5405**  
**Sidney DeVries, Freeport, IL**

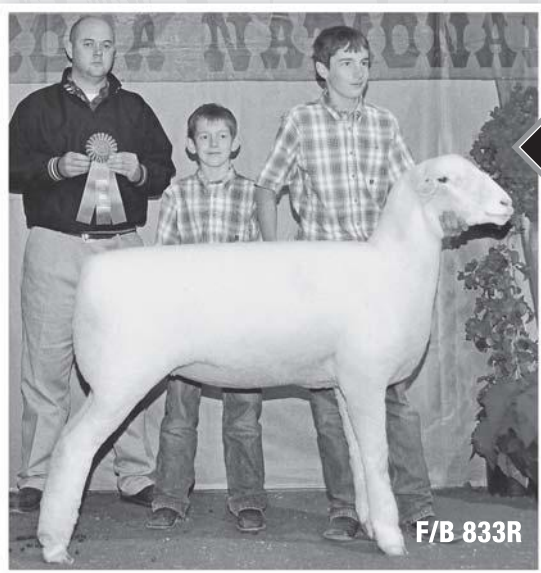


**Reserve Senior Champion Ewe**  
**Yearling Ewe - Riverwood Farms 5217**  
**Kylie Schakel, Oxford, IN**



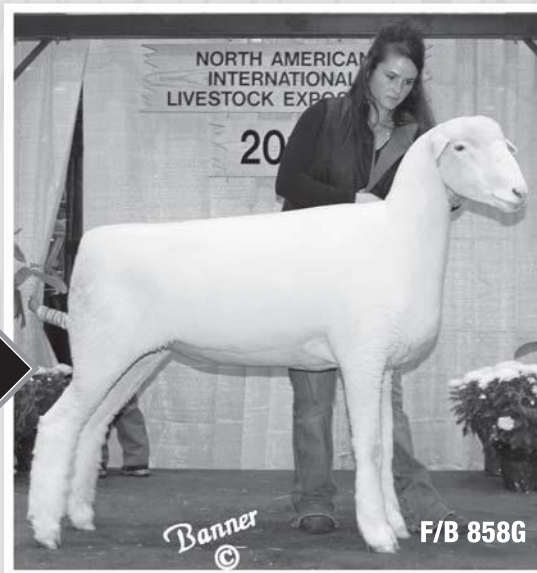
# Watch for the Freitas/Bianchi Entries at the Ohio Dorset Show & Sale...

They will be just as good as the ones we sold last year!!



**SOLD  
LAST  
YEAR**

**SOLD  
LAST  
YEAR**

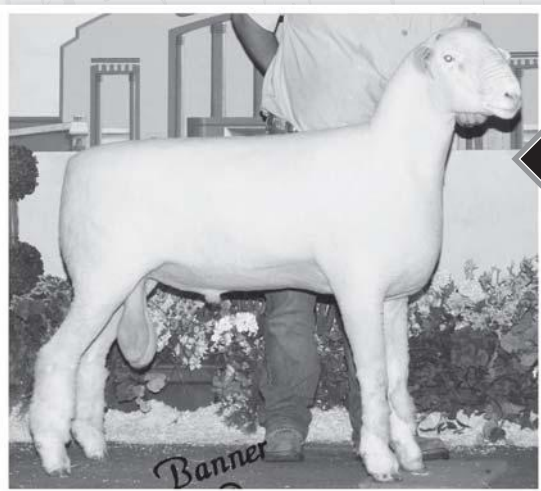


## Congratulations Austin Hicks

- Reserve Yearling Ewe – Iowa State Fair
- Champion Ewe – Arizona National Open Show
- Champion Ewe – Arizona National Jr. Show
- 3rd Place Late Yearling Ewe – Jr. Show NAILE
- 2nd Place Early Yearling Ewe – Open Show NAILE

## Congratulations Kaitlyn Verhaeghe

- Reserve Supreme Champion Ewe – Kentucky State Fair
- Champion Ewe – Jr. Show Indiana State Fair
- 1st Place Class II Yearling Ewe – The Big E
- Grand Champion Ewe – Jr. Show NAILE
- 4th Place Late Yearling Ewe – Open Show NAILE



**SELLS  
THIS  
YEAR**

## Look for him in Ohio!

- 1st Place Fall Ram:**
- Cow Palace
  - CA Jr. State Fair
  - CA Open State Fair



## Our Ohio Dorset Sale Consignment:

- 1 Yearling Ram
- 3 Yearling Ewes
- 2 Ram Lambs
- 2 Ewe Lambs

Also watch for  
our entries at the  
Reno-Nugget  
Show & Sale

**FREITAS/BIANCHI  
DORSETS**

Also watch for  
our entries at the  
Crossroads of the  
West Sale, UT

**ALLAN & NORMA FREITAS**  
10042 CLEVELAND AVE. • OAKDALE, CA 95361  
209/847-1017  
E-MAIL: FREITAS1017@VELOCITER.NET

**RODNEY, KELLY, JOHN & ABBY BIANCHI**  
7430 LOVERS LANE • HOLLISTER, CA 95024  
831/637-0790  
E-MAIL: KELLY\_A\_BIANCHI@YAHOO.COM

# 2010 NATIONAL POLLED DORSET JUNIOR SHOW

NAILE, LOUISVILLE, KY



**Reserve Grand & Junior Champion Ewe  
Spring Lamb - Purple Ribbon Farm 1070  
Thomas Crome, Marshall, IL**

5)Bauck 9-94, Bauck, Isaiah New York Mills MN  
6)Saylor's Twin Oaks 947, DeVries, Sidney Freeport IL  
7)Verhaeghe KRV 0535, Verhaeghe, Kaitlyn Argos IN  
8)Haven Point Dorsets 0942, Longnenecker, Troy Annville PA  
9)Houfe Dorsets 915, Houfe, Mike Milton WI  
10)PRF 1051, DeVries, Sidney

2)Slack 0075, Balfanz, Ainsley Waterford WI  
3)Ebert 10110, Ebert, Monica Saint George KS  
4)Superior Farms 1084, Hicks, Austin Stillwater OK  
5)Nichols 1037, Nichols, Trent, Cruz & Olivia Harrodsburg KY  
6)Gunter Club Lambs 1006, Webb, Haley Rogersville TN  
7)Meghan Barley 1059, Barkley, Heidi Manns Choice PA



**Reserve Junior Champion Ewe  
Spr. Lamb - "Sweet Cherry Pie" Nichols 022  
Trent, Cruz & Olivia Nichols, Harrodsburg, KY**

Freeport IL

11)Riverwood Farms 5442, Pope, Michael Morristown IN  
12)Gibson 9132, Berninger, Rachel Wilmington DE  
13)Apple 94, Hayden, Rowan Bargsville IN

## -Slick Shorn Fall Ewe Lamb:

1)Superior Farms 1054, Hicks, Austin Stillwater OK  
2)Verhaeghe KRV 0532, Verhaeghe, Kayleigh Argos IN  
3)Myers 8232, Myers, Tyler Rushsylvania OH  
4)Mithoefer 0025, Murphy, Grace Plymouth IN  
5)Penn State 10046, Trotter, Anna Marysville IN  
6)Shepherds View 995 ET, Passwaters, Emily Bridgeville DE  
7)Riverwood Farm 5366, Hodel, Ethan Maroa IL  
8)Apple 95, Hayden, Rowan Bargsville IN

## -Winter Ewe Lamb:

1)MGM 1004, Murphy, Grace Plymouth IN  
2)Saylor's Twin Oaks 1004, DeVries, Sidney Freeport IL  
3)Riverwood Farms 5471, Pope, Michael Morristown IN  
4)Wallace Dorsets 0021, Wallace, Micah Hope IN

## -Spring Ewe Lamb:

1)**Reserve Grand & Junior Champion Ewe:** Purple Ribbon Farms 1070, Crome, Thomas Marshall IL  
2)**Reserve Junior Champion Ewe:** "Sweet Cherry Pie" Nichols 022, Nichols, Trent, Cruz & Olivia Harrodsburg KY  
3)McCarthy 0018, Gutormson, Kyle Brookings SD  
4)"Sweet Apple Pie" Nichols 023, Nichols, Trent, Cruz & Olivia Harrodsburg KY  
5)McCarthy 0022, Wolkow, Kali DeSmet SD  
6)Millennium Farms 1020, Schakel, Kylie Oxford IN  
7)Houfe Dorsets 1010, Houfe, Mike Milton WI  
8)Maple Hollow 1014 ET, Barkley, Heidi Manns Choice PA  
9)Walnut Valley Dorsets 250, Oliger, Cassidy, Ashlynn & Delaney Hagerstown IN  
10)Saylor's Twin Oaks 1014, DeVries, Sidney Freeport IL  
11)Spilde 8450, Swearingen, Holly Lawrence KS  
12)Francis 357RR, Hodel, Ethan Maroa IL  
13)Superior Farm 1092, Hicks, Austin Stillwater OK  
14)Quarter Mile Farm 46610RR, Hodel, Ethan Maroa IL  
15)RMF 182, Rasys, Tirzah Brimfield MA  
16)MGM 1007, Murphy, Grace Plymouth IN  
17)Pine Ridge 0169, Waggoner, Olivia East Berlin PA  
18)Riverwood Farms 5546, Oliger, Cassidy, Ashlynn & Delaney Hagerstown IN  
19)Wallace Dorsets 0025, Wallace, Micah Hope IN  
20)Jacoby Dorsets 3, Jacoby, Graeme Wauscon OH

## -Slick Shorn Spring/Winter Ewe Lamb:

1)Verhaeghe KRV 0540, Verhaeghe, Kaitlyn Argos IN

8)T. Myers 8239, Myers, Tyler Rushsylvania OH  
9)GT Dorset 1014, Smith, Allison Emporia KS  
10)Crome 2035, Crome, Thomas Marshall IL  
11)Hurliman 7, Padgett, Keegan Kirklin IN  
12)Bakers Club Lamb, Clements, Bethany Kirklin IN  
13)Gunter Club Lambs 1010, Webb, Haley Rogersville TN  
14)Davis Dorsets 206, Davis, Jenna Chillicothe OH  
15)McMichaels 4M Dorsets 353, Bauerle, Nicholas N.Vernon IN

**-State Flock:** Illinois: Thomas Crome, Ethan Hodel, Sidney DeVries, Sarah Moore

**-Junior Polled Showmanship:** 1)Johanna DeJoria, Newburg, OR

2)Allison Smith, Emporia, KS  
3)Haley Webb, Rogersville, TN  
4)Holly Swearingen, Lawrence, KS  
5)Heidi Barkley, Manns Choice, PA

**-Senior Polled Showmanship:** 1)Tirzah Rasys, Brimfield, MA

2)Kodi Paulus, West Milton, OH  
3)Tyler Myers, Rushsylvania, OH  
4)Austin Hicks, Stillwater, OK  
5)Karen Robbins, Folsom, LA

**-Lightweight Dorset Wethers:** 1)Kassy Veach, Wilton, IA

2)Savannah Stevens, Brandon, MS  
3)Natalie Pickett, Marysville, OH  
4)Bryce Niemeyer, Zearing, IA  
5)Craig Wininger, Surgoinville, TN

**-Heavyweight Dorset Wethers:** 1)**Champion:** Kassie Jo Winn, Estancia, NM

2)**Reserve Champion:** Emily Horvath, Hesperus, CO

3)Austin Bechtold, N. Manchester, IN  
4)Justin Schaal, Farina, IL  
5)William Maltbie, Burlington, OK



**Junior Polled Dorset Showmanship class top three (L to R): Johanna DeJoria, OR; Allison Smith, KS; Haley Webb, TN.**



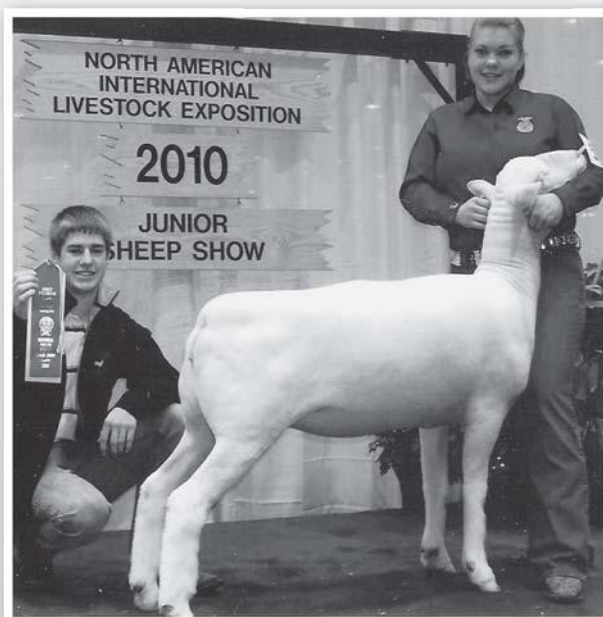
# StarDust

## Sheep Farm

CLUB LAMBS • SIRES • EWES • BORDER COLLIES

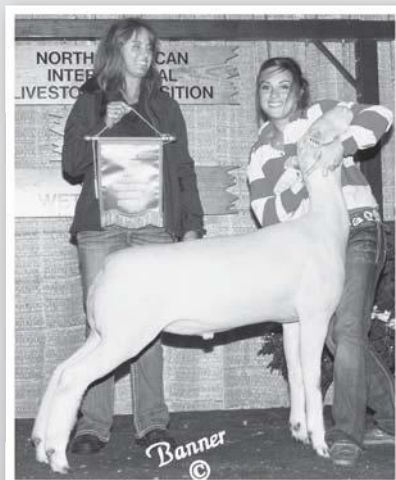
### CONGRATULATIONS to Amber Allen!

Amber is shown at far right with her 1st Place Slick Sheared Polled Dorset Yearling Ewe at the 2010 NAILE Junior Show. Amber's Star Dust-bred ewe (by "Duke's Dollar" and Star Dust #1 Dam) had a very impressive show record...a portion of her awards are listed at right.



### 2010 WINNINGS:

- Champion Ewe Great Plains Regional Jr. Show
- Champion Ewe Tulsa State Fair
- Reserve Supreme Ewe Tulsa State Fair
- Reserve Champion Ewe Oklahoma Youth Expo
- Reserve Champion Ewe Oklahoma State Fair
- 1st Slick Shorn Yearling Ewe NAILE Jr. Show



### CHAMPION DORSET 2010 North American International

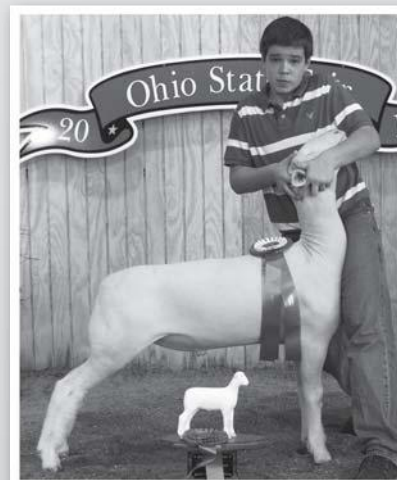
Sire: "Grand Cayman" Dam: Star Dust Ewe by "Rhino"  
Congratulations to Kassie Jo Winn.

### CHAMPION DORSET 2010 Ohio State Fair Junior & Open

Sire: "Rascal" Dam: Star Dust Ewe  
Congratulations to Kyle Rowe.

### See Us At These 2011 Sales:

Mid-West Elite Sale  
Oklahoma Black & White Sale  
Midwest Stud Ram Sale  
Check Our Website for Online Sales



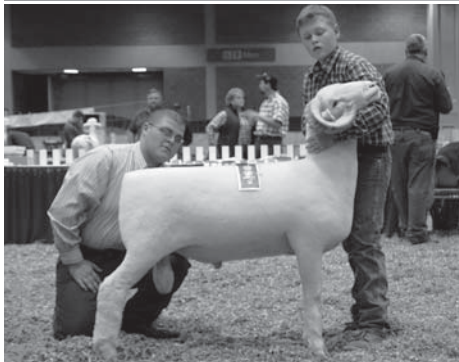
★ Check Our Website for More Photos and Updated Information Visitors Always Welcome at the Farm. ★

**SHERRY & TERRY NELSON • HELEN SELSOR**

Home: 620/924-5262 • Cell: 316/250-7621 (call cell first)  
2444 250th Street • Lincolnville, KS 66858  
stardustfarm@gmail.com • www.stardustfarm.com

# 2010 NATIONAL HORNED DORSET JUNIOR SHOW

NAILE, LOUISVILLE, KY



**Grand Champion Ram**  
Spring Ram Lamb - Cassell W5132  
Austin Grace, Alstead, NH



**Reserve Grand Champion Ram**  
Fall Ram Lamb - Gadsby 1065  
Michael Houfe, Milton, WI



**Grand & Senior Champion Ewe**  
Yearling Ewe - Gadsby 1056  
Grace Gadsby, Stoneboro, PA

## -Fall Ram Lamb:

1) **Reserve Grand Champion:** Gadsby 1065, Houfe, Mike Milton WI

2) Inbody F0961, Inbody, Charles & Sierra Bluffton OH

3) TAC W 5064, Francis, Britton Paris MO

## -Winter Ram Lamb:

1) Shotts 949, Shotts, Christina Quincy OH

## -Spring Ram Lamb:

1) **Grand Champion:** Cassell W5132, Grace, Austin Alstead NH

2) Gadsby G006 E.T., Gadsby, Grace Stoneboro PA

3) Cassell W5212, Grace, Austin Alstead NH

4) PRC 5137, Shotts, Christina Quincy OH

5) Seyon RD413, Gadsby, Grace Stoneboro PA

## -Slick Shorn Ram Lamb:

1) Cassell W5286, Padgett, Keegan Kirklin IN

## -Yearling Ewe:

1) **Grand & Senior Champion:** Gadsby 1056, Gadsby, Grace Stoneboro PA

2) **Reserve Grand & Reserve Senior Champion:** L. Thompson 7111, Gadsby, Grace Stoneboro PA

3) PRC 3734, Shotts, Christina Quincy OH

4) PRC W3553, Padgett, Keegan Kirklin IN

5) Micaela Nauman 196, Shotts, Christina Quincy OH

## -Slick Shorn Yearling Ewe:

1) L Thompson 7124, Shotts, Christina Quincy OH

2) L Thompson 7090, Padgett, Keegan Kirklin IN

3) Bauerle 385, Bauerle, Nicholas North Vernon IN

## -Early Fall Ewe Lamb:

1) Oberholtzer 0907, Zimmerman, Jade East Earl PA

## -Late Fall Ewe Lamb:

1) Shotts 933, Shotts, Christina Quincy OH

2) Cassell W5077, Padgett, Keegan Kirklin IN

3) Shotts 934, Shotts, Christina Quincy OH

4) Nauman 217, Inbody, Charles & Sierra Bluffton OH

## -Winter Ewe Lamb:

1) **Reserve Junior Champion:** Gadsby G004 E.T., Gadsby, Grace Stoneboro PA

2) Spring Hill 0805, Grace, Austin Alstead NH

3) Shotts 950, Shotts, Christina Quincy OH

4) L Thompson 7172, Francis, Britton Paris MO

## -Spring Ewe Lamb:

1) **Junior Champion:** Houfe Dorsets 1015, Houfe, Mike Milton WI

2) PRC W5217, Myers, Tyler Rushsylvania OH

3) Gadsby G007 E.T., Gadsby, Grace Stoneboro PA

4) Gadsby G008 E.T., Gadsby, Grace Stoneboro PA

5) Oberholtzer 1007, Zimmerman, Jade East Earl PA

## -Slick Shorn Ewe Lamb:

1) Cassell W5118, Padgett, Keegan Kirklin IN

2) Shotts 935, Shotts, Christina Quincy OH

3) Warren Squires 202, Inbody, Charles & Sierra Bluffton OH

## -Junior Horned Showmanship:

1) Jade Zimmerman, East Earl, PA

2) Keegan Padgett, Kirklin, IN

## -Senior Horned Showmanship:

1) Michael Houfe, Milton, WI

2) Tyler Myers, Rushsylvania, OH



**Reserve Grand & Junior Champion Ewe**  
Spring Lamb - Houfe 1015  
Michael Houfe, Milton, WI



**Reserve Junior Champion Ewe**  
Winter Ewe Lamb - Gadsby G004  
Grace Gadsby, Stoneboro, PA

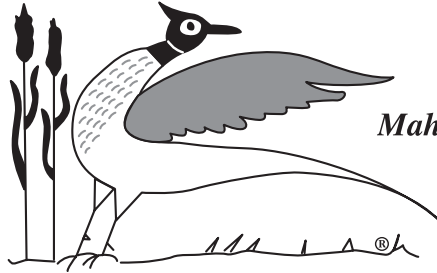


**Junior Horned Dorset Showmanship participants (L to R):** Jade Zimmerman, East Earl, PA and Keegan Padgett, Kirklin, IN



# LAUDEN ACRES

COMMITTED TO EXCELLENCE



*Division of  
Mahantongo Game Farms  
Established 1935*

## *Attention!*

**In 2011, we plan to attend the following Shows & Sales:**

- ◆ Ohio Dorset Show & Sale - Eaton, OH
- ◆ Midwest Stud Ram Sale - Sedalia, MO

## *Special Invitation!*

We extend a special invitation to visit our farm and see the quality of our Dorsets being offered for sale this year. In addition, take a look at our stud rams and brood ewe flock.

*Looking Forward to Visiting With You...  
Don't Hesitate to Contact Us!*

# LAUDEN ACRES

## POLLED DORSETS

### **Flock Consultants:**

**Timothy Hall**  
Narrow Lanes Dorsets  
570/556-6381 (Cell)

**Dick Kuzemchak**  
814/280-2817 (Cell)

**Lynn A. Laudenslager**  
570/758-6284 (Office)  
570/847-9817 (Cell)

### **Mahantongo Game Farms**

559 Flying Eagle Road  
Dalmatia, PA 17017  
570/758-2095 (Fax)  
mgf@tds.net (Email)



THE  
CONTINENTAL  
DORSET CLUB, INC

Debra Hopkins, Secretary  
P.O. Box 506  
North Scituate, RI 02857

No return service requested

**The First... The Biggest...  
THE BEST!**

51st Annual



*New Classes for Slick Shorn Polled & Horned Dorsets*

Selling...  
**POLLED  
&  
HORNED  
DORSETS**

**March 18 & 19**  
Preble County Fairgrounds  
**EATON, OHIO**

**SAYLOR**

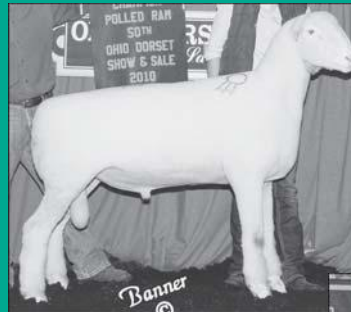
Sale Management &  
Auctioneer Service

**GARY SAYLOR**

19570 County Road 75 • Belle Center, OH 43310  
937-464-7214 • Email: [gsaylor@watchtv.net](mailto:gsaylor@watchtv.net)

View the Sale  
Catalog Online:  
[www.saylorauction.com](http://www.saylorauction.com)

Sponsored by the...  
**OHIO  
DORSET  
ASSOCIATION**



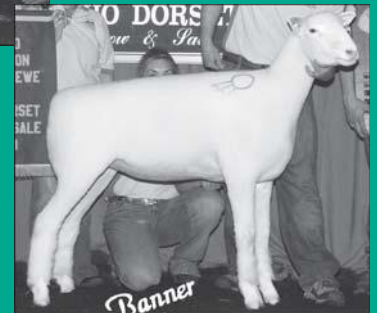
*Pictured are three  
2010 Winners...*

Left:  
**Grand Champion Polled Ram**  
An Oregon entry sold to Ohio for \$2,200.

**SHOW**  
FRIDAY — 8:00 a.m. EST

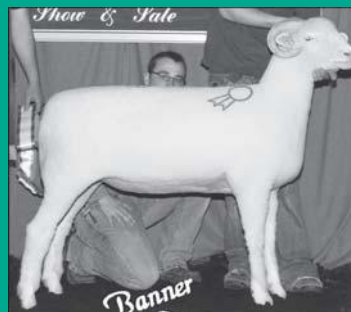
Judge:  
Billy Wade — Salem, Oregon

**SHOW ORDER:**  
Polled Rams, Horned Rams,  
Horned Ewes, Polled Ewes



Above:  
**Grand Champion Polled Ewe**  
An Oklahoma entry sold to Delaware for \$8,500.

Left:  
**Grand Champion Horned Ewe**  
A Wisconsin entry sold to Ohio for \$1,700.



**SALE**  
SATURDAY — 9:00 a.m. EST

Auctioneers:  
Gary Saylor & Danny Westlake

**SALE ORDER:**  
Polled Rams, Horned Rams,  
Horned Ewes, Polled Ewes

View the  
sale and bid live  
online via DV Auction!  
Register at...  
[dvauction.com](http://dvauction.com)

**SALE HEADQUARTERS:**  
Quality Inn (formerly Holiday Inn)  
Richmond, Indiana  
**765/966-7511**