



The DORSET Connection

A Publication Of The Continental Dorset Club

Volume 15 Issue 1

Winter 2013

2012 : A BANNER YEAR FOR DORSETS

2012 was a banner year for Dorsets as sales records were broken, registration numbers and transfers were up for the first time in quite sometime, it was the inaugural year of the Dorset Hall of Fame Program, the start of the Dorset Ewes for Youth Grant program, another successful year for the Dorset Ewe Futurity Program and the show season capped off in Louisville with a strong showing of Dorsets. The shows weren't the largest in numbers but the quality was exceptional, as testified by the Polled Dorsets having Supreme Champion Ewe in the Junior Show and in the Open Show Supreme drives, both the Champion Polled Dorset Ewe and Champion Horned Dorset Ram were pulled for final consideration. On this cover are pictures of those three highly awarded individuals, congratulations to all the breeders and owners.

Dorsets are going strong in the commercial part of the U.S. sheep industry as demand for replacement females and sires has been great. With the direct marketing movement going on in this

country, the demand for year round supply of lamb comes into play, and when the Dorsets bring their out of season breeding abilities and quality carcass traits to the table it makes them a popular and necessary choice. Over 25% of registered Dorsets are fall born lambs allowing the lambs to be marketed at the higher priced winter market around Christmas making more money for their owners. It has never become more important to keep the out of season breeding ability in the Dorset breed to keep it ahead of the competition in the US sheep industry.

Things are changing in the purebred sheep industry and the challenges of the commercial sheep industry, always keeps the Dorset breed in the conversation. Thanks to the diversity of the

Dorsets raised in America, they have become an important part of the US Sheep industry's future. Looking forward to 2013!!



2012 NAILE Junior Show Supreme Champion Ewe
Grand Champion Polled Dorset Ewe
Pine Ridge Farm 1135 ET
Bred & Shown by: Olivia Waggoner, East Berlin, PA



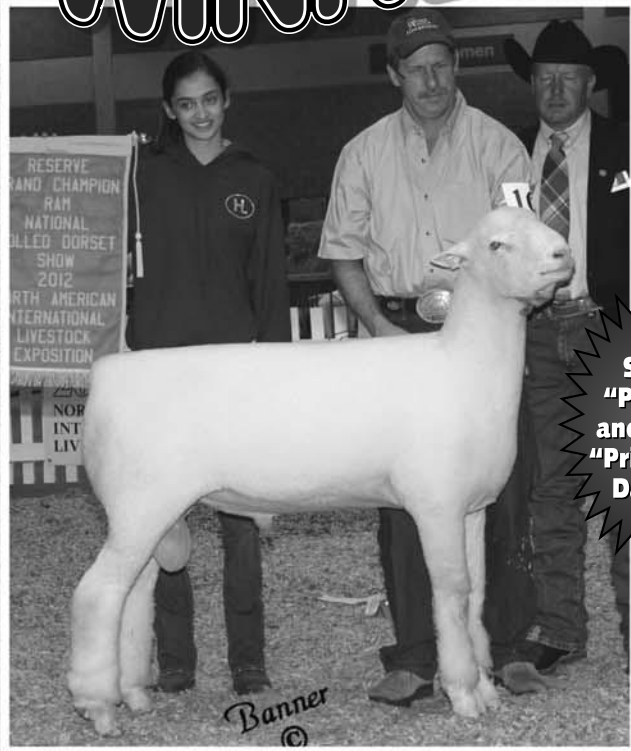
2012 NAILE Open Show Grand Champion Polled Dorset Ewe
Jensen G051
Shown by: Mithoefer Dorsets, Lafayette, IN



2012 NAILE Open Show Grand Champion Horned Ram
PRC 212 ET "Big Shot"
Bred & Shown by: Paul R. Cassell, Wytheville, VA

LOUISVILLE WINNERS!

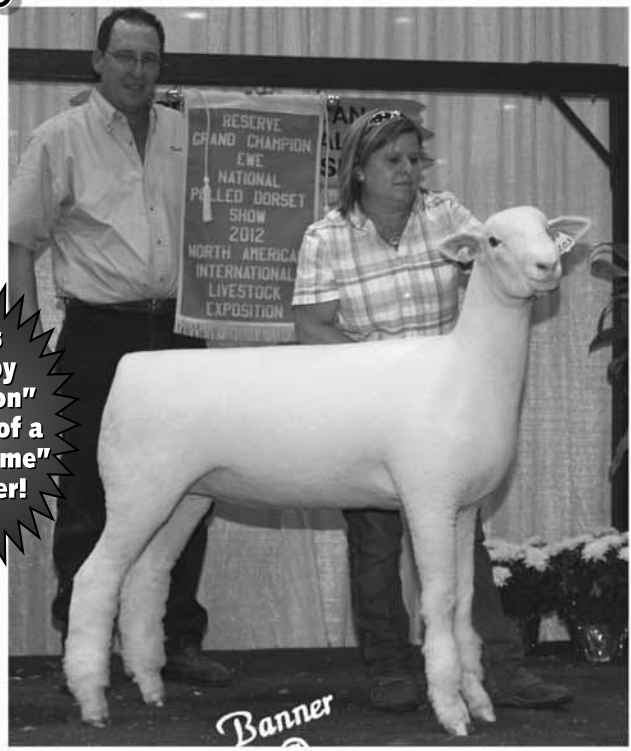
**Klampe Polled Dorsets
Had a Great Day at the
2012 National Show at
the North American!**



Twins
Sired by
"Precision"
and Out of a
"Prime Time"
Daughter!

RESERVE GRAND CHAMPION RAM

**Klampe 202 – 1st Winter Ram Lamb – Jr. Champion
Supreme Champion Ram at Oregon State Fair
Half interest sold to Paul & Gail Davis... Thank You!**



RESERVE GRAND CHAMPION EWE

Klampe 203 – 1st Winter Ewe Lamb – Jr. Champion

***Three Sheep...Four Class Winners...
and... "Precision" Won the Coveted...
SIRE OF THE YEAR AWARD!***

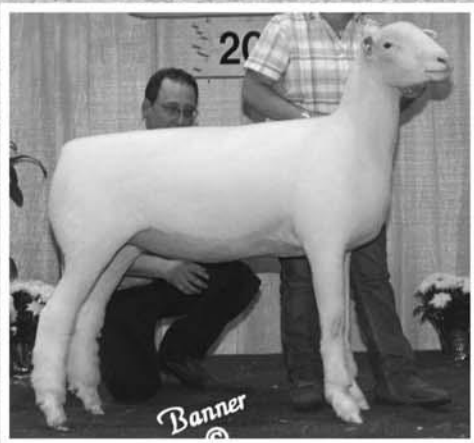
Special Thanks to Our Louisville Help...

Loyal Burns, Joy Hawkins, Kurt Birky, Cynthia Huckins,
Austin Hicks, Kelly O'Brien, and Josh & Rebecca Krinsky.

Look for Our Sheep at These Sales:

National Dorset Sale in Reno • Midwest Stud Ram Sale

Outstanding set of fall lambs available privately... Sired by "Precision" and our new stud ram Pettersson 2127, owned with the Hicks Family of Oklahoma. He was Supreme Champion Ram at the 2011 Oregon State Fair. Give us a call for details!



Klampe 119
She was also
Champion Ewe
at Oregon and
California. She
is also sired by
"Precision" and
out of a "Stealth"
daughter.

**Klampe 119
and Klampe 203
won...
1st PAIR of
EWE LAMBS**

1st EARLY FALL EWE LAMB

89 Ankeny Hill Road SE • Jefferson, Oregon 97352
503/559-9052 • rick.klampe@linnbenton.edu

Rick, Angie, Ashley & Kristina Klampe

klampepolledorsets.com



**KLAMPE
POLLED DORSETS**

TABLE OF CONTENTS

Cover:

2012: Banner Year For Dorsets.....	1
Table of Contents, Advertisers & CDC Directors	3
Dorset Calendar	4
CDC President's Message	6

Feature Articles:

NAILE National Dorset Show Photo Gallery.....	8
2012 Dorset Futurity Results.....	10-11
2012 Fall CDC Board Meeting Minutes.....	12-14

Commercial Dorset Connection

Sheep Records: The Key To Profitability.....	16
Sharpsville Sheep Company Farm To Table Dinner.....	17

Announcements:

Great Plains & Western Director Elections.....	18
2013 National Dorset Sale Plans Being Made For Reno.....	18
Dorset Hall Of Fame Program 2013.....	18
ET Flush & Semen Sales Forms Now Required For Registration.....	18
Credit Cards Now Accepted & Annual Service Fee Increased.....	18
"Dorset Advantage" Registry Program Being Developed.....	19
Dorset Breed Standard Inspection Policy Changes.....	19

Youth News:

NJDA 2012 Annual Meeting Minutes.....	20
2013 All-American Junior Show Being Held in East Lansing, MI.....	22
All-American Junior Show Raffle Information.....	22
NJDA Presidents Letter.....	23
2013 Regional Junior Show Sites & Eligibility Rules.....	23
2013 Dorset Youth Grant Program Winners Announced.....	23

2012 NAILE National Dorset Show Results:

Open Polled Show.....	24,26
Open Horned Show.....	28-29
Junior Polled Show.....	29-30,32
Junior Horned Show.....	32,34

THANK-YOU to all of the advertisers for your support!

This special issue of the 2013 Winter Dorset Connection will not only be mailed out to all current CDC Adult and Youth Members but also to anyone that bought a registered Dorset last year. We are reaching out to more potential Dorset buyers and this will be done in the future with every Winter Issue. This issue will also be emailed to all CDC members that have a current email on file with the CDC office and will be put on the CDC website in its entirety, as has been the policy of past newsletters.

ADVERTISERS

Klampe Polled Dorsets.....	2	Pope Dorsets.....	21
Riverwood Farms.....	5	Hunter Dorsets.....	22
Advertising Rates.....	6	Lauden Acres.....	25
Hunter Nutrition.....	7	Sidwell Dorsets.....	27
Millennium Farms.....	9	Jensen/Bradford Dorsets.....	29
Sink Family Horned Dorsets...13		Schembs/Poynter Dorsets....31	
Promotional Items.....	14	Sarah Moore.....	32
Twin Oaks Dorsets.....	15	Clair Club Lambs.....	33
K Bar K Dorsets.....	17	GT Dorsets.....	34
Royal S Graphics.....	18	Mithoefer Dorsets.....	35
Thornsborough Dorsets.....	19	Ohio Dorset Sale.....	36

CONTINENTAL CLUB BOARD OF DIRECTORS 2012-2013

President - Casey Sidwell
Great Plains Director
 31306 WCR 57
 Gill, CO 80624
 Phone: (970)302-9451

Vice Pres. - Johnnie Johnson
Western Director
 25265 Carlsbad Ave.
 Davis, CA 95616
 Phone: (530)979-0028

Great Lakes Director
Mark Iunghuhn
 1138 E 200 N
 Princeton, IN 47670
 Phone: (812)386-7120

New England Director
Mike Wright
 314 Pratt Rd.
 Alstead, NH 03602
 Phone: (603)835-2829

North Central Director
Jeff Poynter
 12709 E 750th Rd.
 Paris, IL 61944
 Phone: (217)466-4880

Eastern Director
Coulter Passwaters
 9097 Shepherd's View Lane
 Bridgeville, DE 19933
 Phone: (302)377-3229

Executive Secretary/Treas.
Debra Hopkins
 P.O. Box 506
 N. Scituate, RI 02857-0506
 Phone: (401)647-4676
 Fax: (401)647-4679
 E-mail: cdcdorset@cox.net
 www.dorsets.homestead.com

This publication is produced three times annually by the:
Continental Dorset Club, Inc.
North Scituate, RI

DORSET CALENDAR

- March 10, 2013: POSTMARK DEADLINE** for Western & Great Plains Director Election Ballots.
- March 15-16, 2013:** Ohio Dorset Sale, Preble County Fairgrounds, Eaton, OH. For further information contact: Saylor Sale Mgm't (937)464-7214
- April 1, 2013: ADVERTISING & INFORMATION DEADLINE** for the Spring 2013 Issue of "The Dorset Connection". Contact: CDC Office (401)647-4676, e-mail: cdcdorset@cox.net
- April 5-6, 2013:** Illini Dorset Sale, Bloomington, IL. Contact Banner Sale Service (309)785-5058 or visit website: www.bannersheepmagazine.com
- April 26-27, 2013:** National Cornbelt Show & Sale, Iowa State Fairgrounds, Des Moines, IA. Contact Sheep Breeder Sale Management Service (573)442-8257
- May 12, 2013:** Riverwood Farm Dorset Dispersal Sale, At The Farm, Powell, OH. Contact: Eric Bruns (614)403-1436, riverwood_farms@msn.com
- May 25-26, 2013:** Great Lakes Sale, Wayne County Fairgrounds, Wooster, OH. Contact: Banner Sale Management Service (309)785-5058 or visit website: www.bannersheepmagazine.com
- May 29, 2013:** Annual CDC Board of Directors Meeting, 6:00 PM, John Ascuaga Hotel & Casino, Sparks, NV
- May 30-June 1, 2013:** National Dorset Sale, Nugget All-American Sale, John Ascuaga Hotel & Casino, Sparks, NV. Contact: Banner Sale Management Service (309)785-5058 or visit website: www.bannersheepmagazine.com
- May 30, 2013:** Annual CDC Membership Meeting, Dorset Hall of Fame Induction & Appetizer Buffet, 5:00 PM, Cantina Los Tres Hombres, Sparks, NV. (*Right across the street from the casino, \$5.00 donation requested.*)
- June 1, 2013: ENTRY DEADLINE** for All-American Junior Show, featuring classes for both Polled & Horned Dorsets, Michigan State University, East Lansing, MI. Contact: CDC Office (401)647-4676
- May 31-June 1, 2013:** West Virginia Sheep Sale, Tri-County Fairgrounds, Petersburg, WV. Contact: www.sheepwv.org or Dennis or Pam Miller (540)896-3053
- June 15, 2013:** Midwest Preview Show, Missouri State Fairgrounds, Sedalia, MO. Contact Kate Lambert (660)541-0468, email: midwestshow@hotmail.com
- June 14-16, 2013:** Keystone Classic Junior Show, Penn State University Snider Ag Arena, State College, PA. Contact: Stacy Taylor, email: stctylr@aol.com
- June 24-29, 2013:** Midwest Stud Ram Sale, Missouri State Fairgrounds, Sedalia, MO. Dorset Breeding Sheep show on Tuesday, June 25; Dorset Wether Sires & Dams show on Wednesday, June 26 and all sell on Friday, June 28. Contact: Sheep Breeder Sale Management Service (573)442-8257
- July 5-7, 2013:** All-American Junior Sheep Show, Michigan State University Livestock Pavilion, East Lansing, MI. Contact CDC Office (401)647-4676, email: cdcdorset@cox.net
- July 13, 2013:** North Central Regional Junior Dorset Show, Moultrie Douglas County Fair, Arthur, IL. Contact: Jeff Poynter (217)251-9984, jpoynter@tigerpaw.com
- July 14, 2013:** Western Regional Junior Dorset Show, California State Fair, Sacramento, CA. Contact: California State Fair web site: www.bigfun.org or contact: Johnnie Johnson (530)979-0028.
- July 19-20, 2013:** New England Sale, BIG E Fairgrounds, West Springfield, MA. For entry information contact: Jessica Hopkins (401)829-0095 or visit website: www.nesheep.org
- July 19-21, 2013:** New England Regional Junior Dorset Show, Northeast Youth Sheep Show, BIG E Fairgrounds, West Springfield, MA. Featuring classes for both Polled & Horned Dorsets. Contact: Polled: Karin Parks (413)522-2581, Horned: Kelly Wright (603)835-2829 or visit website: www.nesheep.org
- July 19-20, 2013:** Crossroads of the West Sale, Heber City, UT. Contact: Banner Sale Management Service (309)785-5058 or visit website: www.bannersheepmagazine.com
- August 15, 2013: ADVERTISING & INFORMATION DEADLINE** for the Fall 2013 Online Issue of "The Dorset Connection". Contact: CDC Office (401)647-4676, e-mail: cdcdorset@cox.net
- August 31- September 1, 2013:** Great Lakes Regional Junior Dorset Show, Gibson County Fairgrounds, Princeton, IN. Polled & Horned classes offered. Contact: Mark Iunghuhn (812)385-2555, email: mark.iunghuhn.byux@statefarm.com
- September 13-18, 2013:** Eastern States Exposition Meat Week Sheep Show with Polled & Horned Dorset Shows, West Springfield, MA. Contact: www.bige.com
- September 29, 2013:** Great Plains Junior Regional Dorset Show, Tulsa State Fairgrounds, Tulsa, OK. Contact & entry information: www.tulsastatefair.com
- October 5, 2013:** Keystone All Breed Bred Ewe Spectacular, Keystone International Livestock Expo., Harrisburg, PA. Contact: PA Sheep & Wool Growers (814)932-9000, www.pasheep.com
- October 6, 2013:** Eastern Regional Junior Dorset Show, Keystone International Livestock Exposition, Farm Show Complex, Harrisburg, PA. Contact: Keystone Int'l Livestock Exposition, website: www.keystoneinternational.state.pa.us
- October 12-13, 2013:** Delaware Junior Livestock Exposition, Delaware State Fairgrounds, Harrington, DE. Polled & Horned Dorset classes offered. Contact: Delaware Livestock Exposition, website: www.delawarelivestockexpo.com

Announcing... RIVERWOOD FARMS DORSETS COMPLETE FLOCK DISPERSAL

Sunday – 12:00 Noon

MAY 12

Over 100 Head Sell



Riverwood Farms
1000 W. Powell Rd.
Powell, OH 43065
614/885-6268 (Barn)
614/885-2851 (Fax)
www.riverwoodfarms.com

Dear Fellow Breeders,

It is with a heavy heart that Riverwood Farms announces the dispersal of their Polled Dorset Flock. With the exception of our semen bank, all will sell. Stud rams, Brood ewes, Yearling ewes and rams, and fall and spring lambs. Since September 15, 1988 when our first Dorset lamb hit the ground, we have been dedicated to producing the most sought after sheep the industry could provide.

This will be a rare opportunity for seedstock producers to purchase stud females from the heart of our programs. Females that produced High Definition, Incision, Primo, Park Place, True Grit, Elvis, Back to Basics, and Gemini will sell! Since 2004 our Polled Dorset flock has produced numerous National Champions, but more importantly they have produced over \$500,000 in offspring. The brood ewes will sell exposed for fall lambs.

We regret leaving the circle of friends we have made over the years, however, we are excited to offer this opportunity to purchase our foundation females. We eagerly anticipate the influence our genetics will make for their new owners.

We invite you to Saturday night's social event and the sale on May 12, 2013 at the farm. The sale will be on the Internet and we will provide delivery to Reno and Sedalia.

Cordially Yours,

s/ *Eric L. Bruns*

Eric L. Bruns
Shepherd, Riverwood Farms

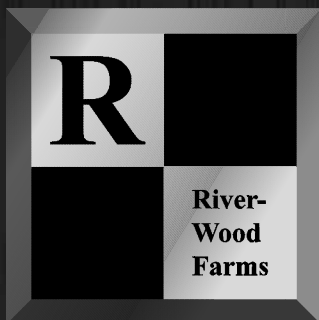
**Sale
at the
Farm**

Complete Sale
Catalog Available
April 1st

**Gary
Saylor**

**Auctioneer
& Sale Mgr.**

937/464-7214
gsaylor@watchtv.net



• Dorsets, Dorpers, White Dorpers & Lowline Cattle •

Jim Klingbeil, Owner

1000 W. Powell Rd. • Powell, OH 43065 • 614/885-6268 (Barn) • 614/885-2851 (Fax)
Email: riverwood_farms@msn.com • Website: www.riverwoodfarms.com

Tom Henry, Farm Manager

Eric Bruns, Shepherd • **Cruz Nichols**
614/403-1436 Assistant Shepherd



LETTER FROM CDC PRESIDENT CASEY SIDWELL

Greetings! I hope 2013 is treating you well so far. I'm sure many of you, like me, are busy with the rigors and rewards of spring lambing. I hope you are getting your best set ever.

This year's Winter edition of the Dorset Connection is being sent to an expanded mailing list that includes buyers and non-member registrants from 2012. If you have not been receiving this newsletter regularly, welcome. The Connection, along with our website, Dorsets.com are the best places to stay up to date on news and information regarding Dorset sheep. If you would like to be included on the list for all issues of the Connection, as well as register sheep at reduced rates, send in a lifetime membership. Forms can be found on our website.

I had the pleasure of attending the Junior Dorset shows in Louisville last fall. It is always fun to see young Dorset enthusiasts working hard to present their projects. I am also pleased to report that we had a strong group of applicants of all ages for our first set of Youth Ewe Purchase Grants. It was a lot of fun to read about the plans these kiddos have for developing their own Dorset breeding programs. It is not too early to start encouraging young people in your area to apply for next year.

We were excited to see an upturn in registrations, and as a result, revenues during our last fiscal year. It is our hope that the worst is behind us, but we know that our solvency into the future depends both on the strength of our breed and the service that we provide as a registry. Let us know what we can do for your type of operation, as well as your ideas for our future. Our ears and inboxes are open.

Casey Sidwell, CDC President

The **DORSET** *Connection*

ADVERTISING RATES

Published by the Continental Dorset Club, Inc.

Ad Deadlines

Spring/Summer Issue: Ad copy and materials due April 1st (May 15th mailing date)

Winter Issue: Ad copy and materials due December 1st (January 15th mailing date)

Payment

Payment for all advertising due at time of ad placement. Additional costs for extra artwork or special effects will be billed later. Add \$15 for each photo, **No Proof Pictures Accepted – Only Prints or Digital Photos (high resolution)**. No discounts on photos. Print-ready ads submitted on CD (Mac formatted) or sent via e-mail are accepted and will receive a 15% discount from listed base prices.

Contracts

Advertising contracts are also available. Advertisers will receive an additional 10% discount for yearly contracts. Ads must be placed in three consecutive issues and paid in full at the time the first ad is placed. No limitation on ad size.

NOTE: The Continental Dorset Club, Inc. reserves the right to reject any advertising or copy that may be objectionable.

Send all advertising materials to:

DALE SMITH

Advertising Editor/Designer

17917 Brim Road • Bowling Green, Ohio 43402

Phone/Fax: 419.352.2332 Cell: 419.308.8418 E-mail: royal-s@earthlink.net

Ad Dimensions & Base Prices

	2 Page Ad 16" x 9-7/8" \$460
--	---

1 Page Ad 7-1/2" x 9-7/8" \$290
--

1/2 Page Ad 7-1/2" x 4-15/16" (Horizontal) or 4-7/8" x 7-1/2" (Vertical) \$175

1/4 Page Ad 4-7/8" x 3-3/4" \$105
--

Bus. Card Ad 3-1/2" x 2" \$52 - 1 Time \$140 - 3 Times

AD PROOFS: Initial and final proofs are guaranteed to advertisers who send in ad copy and materials by the deadlines noted. Advertising copy received after deadlines will be included on a first come, first serve basis, time and space permitting.

HUNTER NUTRITION

Your Complete Feeding Program



NUTRITIONALLY SUPERIOR! COMPETITIVELY PRICED!

High Selenium & Vitamin E * Improved Flock Health * Prevent WMD, Calculi, & Coccidiosis * Highly Fortified Quality Consistent Feed

40% Lamb Supplement Pellet

A Lamb Grower Supplement for on farm mixing

Sheep Mineral

Free Choice Mineral for the Flock

18 Show Lamb

Texturized Show Lamb Feed

Show Sheep 165

A Feed for Show Breeding Stock

16 % Lamb Ration

Texturized Lamb Grower Feed

Hay Saver Pellet

Hay Alternative

45% Ewe Supplement Pellet

Ewe Flock Supplement Pellet for on farm mixing

Texturized Lamb Starter

High Performance Texturized Starter

Super 20 Lamb Starter Pellet

Mini-Pellet Lamb Starter Feed

Show Lamb 2000

Holding Feed for Show Lambs

Animal Health, Vaccines, Sheep Supplies

Good product line, quick shipping

Custom Mix Sheep & Lamb Feeds

Texturized, Pelleted, Mineral, Premixes

Lamb 1800 and Lamb 1600

Pelleted 18% and 16% Lamb Rations

Ewe 12-30 B Ration

Texturized Ewe Flock Feed

Ewe 1200 B Pellet

Pelleted 12% Ewe Ration



SURVIVE!

VITAMIN E & ENERGY ORAL DOSER

**Saves Newborn Lambs • Fast Acting • Highest Vitamin E Level of any Oral Doser • Prevents Vitamin E Deficiencies
Treats Ketotic Ewes • Gets Cold, Weak Lambs Going**



DON'T FORGET TO ORDER YOUR LAMBING SUPPLIES!



Ask for our Catalog featuring dozens of sheep feeds, premixes, supplements, and free choice mineral. Call us for expert advice & premium products to maximize your flocks potential.

HUNTER SHEEP NUTRITION

200 N. South Street | P.O. Box 412 | Brookston, IN 47923 | (765) 563-1003

UPS Shipping • Feed Shipping via Truck

www.sheepfeed.com



2012 NAILE NATIONAL DORSET SHOWS PHOTO GALLERY



**2012 Don Morehead Memorial Award
Grand Champion Polled Ram-Yrl. Ram
"Whiskey" Ram & Ewe 0599F
Millennium Farms, Oxford, IN**



Left: Reserve Grand Champion Fitted Polled Dorset Ewe - Klampe 203, Winter Ewe Lamb. Shown by Ashley & Kristina Klampe, Jefferson, OR

Below Left: Champion Dorset Wether shown by Kagney Collins, Flanagan, IL

Directly Below: "Dorset Royalty" watching the show: Dick Kuzemchak, Ron Guenther, Margaret Wade, Dave Birch, Dave Harmann

Below Right: Winning State Flock Polled Dorset Junior Show - Illinois: Sidney DeVries, Sarah Moore, Thomas Crome & Thomas Vandeventer, assisted by Megan Crome & Ethan Hodel

Right: Reserve Grand Champion Horned Dorset Ram - Gadsby 1203 ET, Spring Ram Lamb. Shown by Timothy Gadsby, Stoneboro, PA

Bottom Left: National Polled Dorset Show Premier Exhibitor Riverwood Farm, Powell, OH

Bottom Right: National Horned Dorset Show Premier Exhibitor Paul R. Cassell



**Open & Junior Show
Grand Champion Horned Ewe
Fitted Yearling Ewe - Sink 35P
Keegan Padgett, Kirklin, IN**



MILLENNIUM FARMS



...Everybody Needs A Shot!

2012 NATIONAL CHAMPION POLLED DORSET RAM

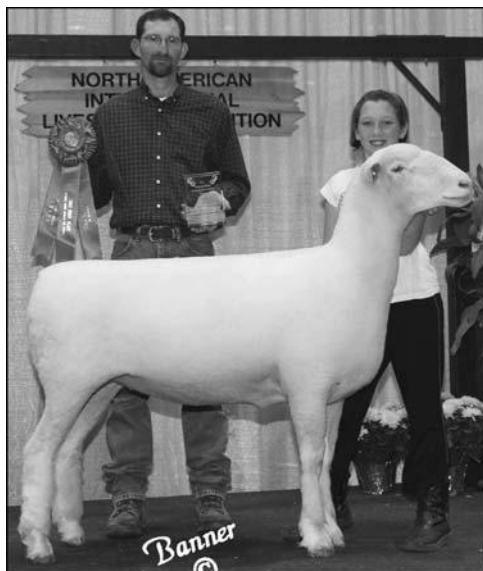
Ram & Ewe Farm 0599F

DOB: 09/2010 DNA: RR

Sire: "R.S.V.P." Ram & Ewe 0301

Dam: Ram & Ewe Farm 0377
(*"High Definition"* daughter)

Frozen Semen Available... We are now
booking fresh semen A.I. dates with RSG for 2013!



"FUN IN THE SUN"

Ram & Ewe Farm 0607

DOB: 09/10/2010 DNA: QR

Sire: Ram & Ewe Farm 0574
(*"WOULDJA"* son))

Dam: Ram & Ewe Farm 0396
(*"R.S.V.P."* daughter)

Kylie's National Polled Dorset Yearling Ewe Futurity Winner

Champion Dorset Ewe at the
2012 Indiana State Fair 4-H
Show and Champion Ewe at
the 2012 North Central
Regional Junior Show.



Kylie also exhibited the Reserve Champion Slick Sheared Dorset Ewe at NAILE, who also was the 1st place Slick Sheared Ewe at the All-American Junior Show.

**"Fun In The Sun" was purchased at the 2011
Ohio Dorset Sale from Ram & Ewe Farm.**

Special Thanks to all our friends and family who helped us hang on and stay in the sheep business! They always say... "where there's a will, there's a way", and your support has allowed us to stay! God bless you all, and we look forward to offering you some of the finest Dorset sheep in 2013!

CONGRATULATIONS...

Ashley Pinckney, NY who won the New England Futurity with a "Whiskey" daughter!

Our farm has relocated... The flock is now located in Lebanon, Indiana!

Chris has taken a full-time position with Reproduction Specialty Group, Inc. (RSG) working with Dr. Tad Thompson and his amazing crew!

"TEAM SCHAKEL"

Chris, Dawn, Kylie, Kaleb, Kassidy & Kaitlyn

5410 N St Rd 39 ~ Lebanon, IN 46052 ~ 765/412-8686 (Chris's Cell) ~ 765/412-8684 (Dawn's Cell)

www.millenniumfarmsin.com

2012 DORSET FUTURITY FINAL PLACINGS

2012 Regional Polled Dorset Ewe Lamb Futurity Results

REGION	PLACING	EXHIBITOR	BREEDER
New England	First	Ashley Pinckney, Cayuga, NY	Millennium Farms, Oxford, IN
New England	Second	Cameron Allison, Hemlock, NY	McDaniel Ranch, Greenfield, IN
New England	Third	Hope Mariacher, Lee, NH	Olivia Waggoner, East Berlin, PA
New England	Fourth	Austin Grace, Alstead, NH	Millennium Farms, Oxford, IN
New England	Fifth	Austin Grace, Alstead, NH	Millennium Farms, Oxford, IN
Eastern	First	Emily Ellison, Newport, TN	Twin Oaks Dorsets, Belle Center, OH
Eastern	Second-Tied	Christopher Macaulay, Atglen, PA	Olivia Waggoner, East Berlin, PA
Eastern	Second-Tied	Emily Ellison, Newport, TN	Paul & Nancy Wishinger, Sinking Spring, PA
Great Lakes	First	Michael Pope, Greenfield, IN	Spilde Brothers, Stoughton, WI
Great Lakes	Second	Deanna Knapke, Rockford, OH	Crome Dorsets, Marshall, IL
Great Lakes	Third	Jenna Davis, Chillicothe, OH	Sunny Valley Farm-Reeds, Manheim, PA
Great Lakes	Fourth	Jenna Davis, Chillicothe, OH	Michael Pope, Greenfield, IN
North Central	First	Sidney DeVries, Freeport, IL	Lauden Acres, Dalmatia, PA
North Central	Second	Ty Hodel, Maroa, IL	Purple Ribbon Farm, Arcola, IL
North Central	Third	Abby Donkers, Faribault, MN	Spilde Brothers, Stoughton, WI
North Central	Fourth	Abby Donkers, Faribault, MN	Riverwood Farms, Powell, OH
North Central	Fifth-Tie	Ethan Hodel, Maroa, IL	Lauden Acres, Dalmatia, PA
North Central	Fifth-Tie	Riley Donkers, Faribault, MN	McCarthy Polled Dorsets, Sycamore, OH
Great Plains	First	Austin Hicks, Stillwater, OK	Northern Starr Lvestk Services, Lonsdale, MN
Great Plains	Second	Austin Hicks, Stillwater, OK	Northern Starr Lvestk Services, Lonsdale, MN

2012 NAILE POLLED EWE LAMB FUTURITY RESULTS

Placing	Exhibitor	Breeder
1st	Michael Pope, IN	Spilde Brothers, WI
2nd	Sidney DeVries, IL	Lauden Acres, PA
3rd	Ty Hodel, IL	Purple Ribbon Farm, IL
4th	Emily Ellison, TN	Twin Oaks Dorsets, OH
5th	Ethan Hodel, IL	Lauden Acres, PA

2012 YEARLING EWE FUTURITY RESULTS

Placing	Exhibitor	Breeder
1st	Kylie Schakel, IN	Ram & Ewe Farm, OH
2nd	Jonathan Albright, IL	Ram & Ewe Farm, OH
3rd	Hope Mariacher, NH	Olivia Waggoner, PA
4th	Jenna Davis, OH	Riverwood Farms, OH
5th	Ethan Hodel, IL	Olivia Waggoner, PA



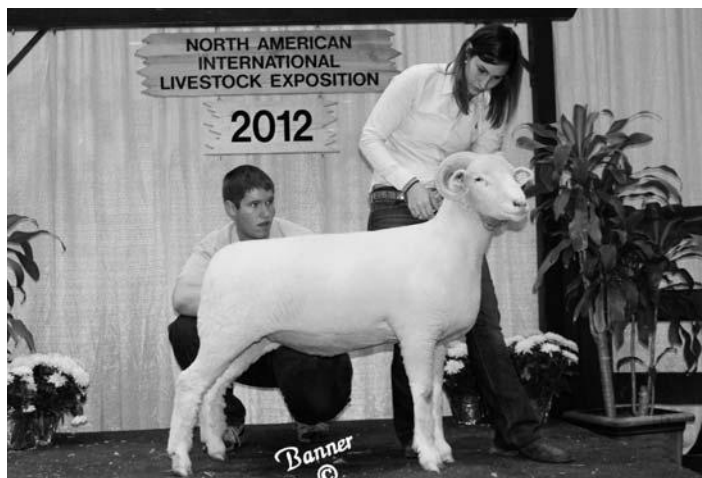
National Polled Dorset Futurity Ewe Lamb & Great Lakes Region
Spilde 8737 - Bred by Spilde Brothers, Stoughton, WI
Shown by: Michael Pope, Greenfield, IN



National Polled Dorset Futurity Yearling Ewe
Ram & Ewe Farm 0607F - Bred by Ram & Ewe Farm, So. Solon, OH
Shown by: Kylie Schakel, Oxford, IN

2012 Horned Dorset Ewe Lamb Futurity Results

<u>Placing</u>	<u>Exhibitor</u>	<u>Breeder</u>
1st	Monica Ebert, KS	Barbara & Leon Cassell, VA
2nd	Logan Inbody, OH	John Mrozinski, IN



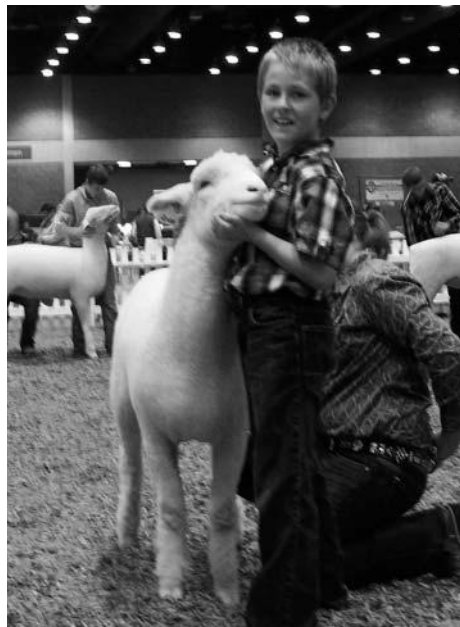
National Horned Dorset Futurity Ewe Lamb
TAC W6129 - Bred by Barbara & Leon Cassell, Wytheville, VA
Shown by: Monica Ebert, St. George, KS

ATTENTION: JUNIOR DORSET BREEDERS

The 2013 Dorset Ewe Lamb and Yearling Ewe Futurity Rules and Regulations, Point Record Forms and Yearling Ewe Nomination Form can be found in its entirety at the CDC Website.

Check it out today at:
www.dorsets.homestead.com

In 2012, the Futurity Program awarded a total of \$5,132.88 in premiums and awards to the futurity participants. The 22 junior participants averaged a \$214.00 payout. This futurity program is highly supported by the breeders so take advantage of earning money back on your investment by purchasing a futurity nominated Dorset ewe at a 2013 sale.



ADDITIONAL 2012 FUTURITY PARTICIPANTS

Above: First time futurity participant, Cameron Allison, Hemlock, NY showing his McDaniel Ranch ewe lamb at Louisville. Above Right: Another first time futurity participant, Mclayn Musick, Camp Point, IL showing his Bretzman bred ewe lamb at his local county fair where she helped him win his 4-H Showmanship Division. Right: Jonathan Albright, Rock City, IL sent in this picture of his second place yearling ewe winner this past summer at a county fair. This ewe was bred by Ram & Ewe Farm.

FEATURE ARTICLES

2012 CDC BOARD FALL TELE-CONFERENCE MEETING MINUTES

The meeting was called to order by President Casey Sidwell at 7:30 PM EST. Directors on-line were: Jeff Poynter, Johnnie Johnson, Mark lunghuhn, Coulter Passwaters and Mike Wright. CDC Exec/Sec/Treas. Deb Hopkins was also on-line to take minutes.

-Secretary's Report: Deb Hopkins presented in writing the meeting minutes from the 2012 Annual Board Meeting held April 5, 2012 in Bloomington, IL. Coulter Passwaters moved to accept the minutes as printed. Mark lunghuhn seconded. Motion carried.

-Treasurer's Report: Deb Hopkins presented the current fiscal report for the time period from September 1, 2012 to November 26, 2012. It was reported that total income was \$12,652.08; total expenses were \$22,081.50, for a net loss for the period of \$9,429.41. Account balances were: Checking \$13,032.81, Money Market \$10,070.22, CD \$25,655.17, Dexter Savings \$25.00, Junior Association \$34,284.10 for a total of \$83,067.60 on hand. Jeff Poynter moved to accept the treasurer's report. Coulter Passwaters seconded. Motion carried. Deb Hopkins reported that the 2011-2012 fiscal records are at the accountants for the annual tax from filing and noted that the association's bottom line was \$5,918.64 in the black, first time for many years.

-CDC Stats: Deb Hopkins reported the current 2012-2013 stats and 561 head have been registered to date (down 166 head from last year) and 429 head transferred (down 90 head from last year). Deb Hopkins also reported the year-end stats for 2011-2012. There were 6493 head registered (up 448 head from the previous year) and transferred 3,370 head (up 458 head from the previous year). The top fifteen states in registrations were:

1)Iowa 768 head; 2)Indiana 598; 3)Pennsylvania 575; 4)Ohio 506; 5)Minnesota 506; 6)Illinois 467; 7)South Dakota 290; 8)Wisconsin 271; 9)Virginia 238; 10)California 237; 11)Nebraska 194; 12)Missouri 174; 13)Oregon 170; 14)Kansas 153; 15)New York 131. The top fifteen individual registrars were: 1) Jeffrey A. Hunter, IN (Production) 126; 2) K Bar K Farms, PA (Production) 121; 3) Roger Huntrods & Sons, IA (Wether & Production) 103; 4) Paul R. Cassell, VA (Horned) 90; 5) U.S. Meat Animal Research Center, NE (Production) 88; 6) Spilde Brothers-Kent & Dan, WI (Frame) 73; 7) Star Dust Sheep Farm,

KS (Wether) 68; 8) Riders Dorsets, IA (Wether) 67; 9) Thomas J. Dagel, SD (Frame & Wether) 66; 10) Brent Wastenev Sheep Farm, IA (Wether) 60; 11) Kelli & Brett Slack, IN (Wether) 58; 12) Monte Forster, OR (Horned) 57; 13) Arndt Acres, MN (Frame) 54; 14) Tie-Lance Thompson, OH (Horned) 53; 14) Tie-Robert L. Vander-Schaaf, IA (Production) 53; 14) Tie-Kirsten Sass Hatfield, OH (Wether & Production) 53.

-Correspondence: Deb Hopkins reported that she has received many thank-you notes and letters from participants in the Louisville judging contests including the 4-H Skil-athon Contest as the CDC sponsors awards in all of the judging events in Louisville. The CDC also received a thank-you from the North Central Junior Show thanking us for monetary support and awards. Also, a note of thanks from the Harold Workman Recognition Committee was received thanking for the donation, as he is retiring as Chairman of Kentucky State Fair Board.

COMMITTEE REPORTS:

-Dorset Futurity: Deb Hopkins presented the final futurity standings for the 2012 program. A total of \$4,705 was paid out to 22 participants. Average payout was \$214.00. Awards and rosettes were presented to regional and national winners. There were 148 polled ewe lambs nominated for the program taking in \$3,575 in nomination fees. 67 polled ewe lambs were purchased by juniors and eligible for participation. The yearling ewe program had 5 nominations taking in \$125 in nomination fees. The horned ewe lamb futurity had 33 ewe lambs nominated taking in \$675 in nomination fees. 14 horned ewe lambs were purchased by juniors and eligible for participation. The CDC did increase payouts across the board and still has over \$1200 to carry over for next year's program.

-Breed Standard Education: It was discussed that the breed standard manual is not yet completed and that we need to make this a priority to get completed. Melanie Barkley is still waiting on photos to complete. Casey Sidwell will get together with her to assist in getting the materials she needs to complete the manual. Jeff Poynter moved to discontinue breed type inspections at all National Sales. Coulter Passwaters seconded. There was much discussion and then Jeff Poynter called the previous question. The motion carried 4 to 1. It was noted that the board could do a breed type survey/inspection at any time at a National event to see where the breed is at as long as it is advertised to the consignors/exhibitors prior to the

event.

Discussion ensued about the breed standard education at Junior Shows. It was decided to by-pass the All American Show as it is very difficult to have a good time frame to talk to the exhibitors as they are on a very tight time schedule and perhaps something could be incorporated during NAILE at the Junior Association meeting to cover something each year. It was re-enforced that breed educational activities should be done at each regional show and with the completion of the manual that would be a great tool to use. Jeff Poynter moved to add Justin Benz and Bart Caldwell to the certified judges list. Johnnie Johnson seconded. Motion carried. There was also discussion of a judge integrity issue at a major state fair and since neither of the individuals involved are on the certified judges list, no action needed to be taken.

-Newsletter/Webpage: Deb Hopkins reported that the 2012 Fall Online Edition of the newsletter went very well. It featured colored ads, had three advertisers and after paying for ad set-up had an income of \$249.75. Plans are underway for the 2013 Winter Issue and to date has over 10 advertisers. Coulter Passwaters moved to increase circulation for the Dorset Connection Winter issue to include anyone who had a Dorset transferred or registered to them during the prior year even though they are currently not CDC members. Mike Wright seconded. Motion carried. Deb will publicize this action and Casey will make some phone calls to get even more advertising to cover cost of increasing the number sent out as everyone felt this was a great way to get to new buyers and promote the Dorset breed.

-Dorset Breeder Excellence Program: It was reported that the CDC is waiting for entries as the deadline is the end of the year. Discussion was suggested to come up a better program to recognize our breeders since they have a hard time doing it themselves, perhaps a breeder spot light every newsletter issue. Jeff Poynter moved to table discussion on replacing the current Dorset Breeder Excellence Program, due to lack of participation, until the next meeting. Johnnie Johnson seconded. Motion carried.

-All-American Junior Show: Deb Hopkins reported that the 2013 All-American was held in Des Moines, IA. It was a very successful event as it was the second largest All American show on record. The 2013 All American will be held in East Lansing, MI at the Michigan State University Livestock Pavilion from July 5-7, 2013. Polled and Horned Dorsets will be included with slick

classes offered once again. The CDC is soliciting a polled ewe lamb and horned ewe lamb to be sold at spring sales to help support the Dorset Shows. Interested breeders please contact the CDC office or a CDC director. Deb will also have the juniors solicit class donors at the Ohio Dorset Sale & National Sale in Reno, and the raffle tickets will be mailed out again directly to Dorset breeders for their support. Judges for the event will be Farabee McCarthy, Matt Scramlin and Dave Clouser. In 2014 the All-American Junior Show will be held in Hutchinson, KS at the Kansas State Fairgrounds.

-National Junior Dorset Association: Deb Hopkins reported they had a great meeting and the meeting & pizza party was well attended in Louisville. The association awarded three \$1000 College Scholarships to Troy Longenecker, PA, Sidney DeVries, IL and Monica Ebert, KS. They had a 2012 income of \$2,454.60 and 2012 expense of \$3,405.40, as they did award three scholarships. They decided to do their annual gift basket fund raiser at Ohio this year because there will be no other type of fundraiser like it at that sale. The new 2012-2013 Officers are: President & North Central Director: Sarah Bush, MO; Vice President & Director-At-Large: Michael Pope, IN; Sec/Treas. & New England Director: Ashley Pinckney, NY; Eastern Director: Troy Longenecker, PA; Great Lakes Director: Tyler Myers OH; Western Director: Johanna DeJoria, OR; Great Plains Director: Austin Hicks, OK and Director At-Large: Britton Francis, MO

-Production Committee: Deb Hopkins reported that there was nothing to report at this time but the CDC office is still in the process of re-designing registration papers to include performance data and getting the Dorset breeders identified on the type of Dorsets that one raises for the breeder directory, which will be re-printed next spring.

-Dorset Youth Breeder Incentive Program: Casey Sidwell reported 16 applications have been received that will need to be reviewed and two winners selected. Casey appointed Johnnie Johnson, Coulter Passwaters, Ashley Pinckney, Britton Francis and herself as Chairman of the committee. Deb has scanned in all the applications and will get to Casey to distribute for the selection process as the selection needs to be made by the first of the year so the winners can plan their purchasing.

-Dorset Hall Of Fame: Deb Hopkins reported that she has one name already and the possibility of another. Johnnie Johnson also has some names and will contact families to get these nominations in to be recognized at Reno next year. The

KEEGAN'S GIRLS

MOTHER



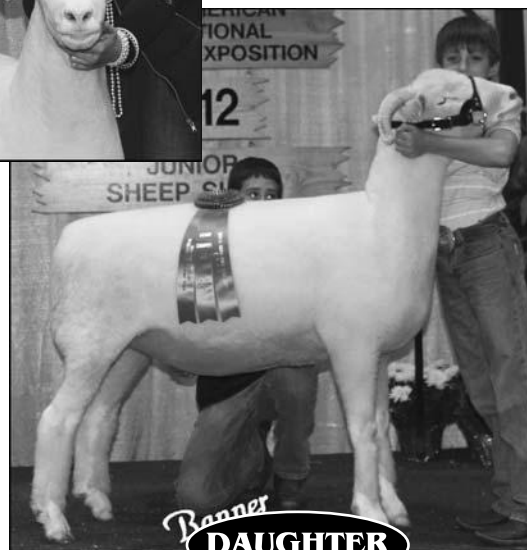
PRC W3553
2009 NAILE
Reserve Champion Ewe
 •
2010 NAILE
Best Headed Ewe

Sink 35-P

2011 NAILE
Reserve Jr. Champion

•
2012 NAILE
Grand Champion Ewe
Open & Junior Shows

Sink-35-P's ET sisters were 1st Sept. Ewe Lamb and 1st Slick Shear ewe lamb in the Jr. show. The slick shear will sell at the Ohio Dorset sale in March!



DAUGHTER

2013 Sale Dates

Ohio Dorset Sale in March • Sink/Jones/Stillwell Online Sale in March

*Stop By and
 Visit Us
 at the Farm*



*Private Sales
 Available
 at the Farm*

Southdowns & Horned Dorsets

Steve & Sheila Sink • Keegan Padgett

11172 E. St. Rd. 38 • Kirklin, Indiana 46050

Home: 317/758-0864 • Cell: 765/960-5045

Email: sinksouthdowns@gmail.com • www.sinksouthdowns.com

program was very well received and the CDC looks forward to continuing these very special recognitions. Nominations need to be in by April 15, 2013.

OLD BUSINESS:

-Registration Program Update: Deb Hopkins reported that the registration paper needs to get re-designed and the performance data put in, and she needs to have time to learn to use the program to maintain efficacy of turnaround. With the CDC being just a one person office, it has become a problem to get all this done but hopes to get it done this winter.

-2013 Western & Great Plains Director Elections: Deb Hopkins reported that the

committee chairmen were announced in the last newsletter. The committees need to be finalized with all members and she will get letters of direction out to the committee members as slates of nominees are due in the office by February 15th, so the balloting can take place during March.

-Scheduling of Goal Setting Meeting: At the last CDC meeting it was suggested to have an informal meeting of long term goal setting for the association. It was decided to have such meeting at Reno and will announce time to hold once at the event.

-“Dorset Advantage” Program: Jeff Poynter moved to appoint a committee to

continued on page 14

FEATURE ARTICLES, cont.

establish the guidelines of the "Dorset Advantage" Program. Mike Wright seconded. Motion carried. Casey Sidwell appointed herself, Jeff Poynter, Mike Wright and Johnnie Johnson to the committee and they will have something to present to the board and will call a special meeting if necessary to approve. This program would be a half blood or greater female appendix registry program and to provide classes for these individuals at shows.

NEW BUSINESS:

-2013 National Sale & Annual Meeting:

The National Sale for both polled and horned Dorsets will be at the Nugget All American Sale in Sparks, NV on May 30-June 1, 2013. Johnnie Johnson reported that the California Dorset Association has met. It is suggested that the Annual Meeting be at a close by Mexican Restaurant on Thursday early evening after the Ewe Show. The California Dorset Association would kick in \$250, they would ask the attendees for a \$5.00 donation and the balance to be paid by the CDC. The California Association will be having fund raising activities and welcome gifts for the consignors. The CDC Annual Board of Directors meeting has yet to be determined. Deb will check with sale management to see what time would work best. Billy Wade has been the name submitted to judge the event.

-NAILE National Dorset Shows: Attending board members commented on the shows and things went very well for the Dorset breed. Deb Hopkins reported that the Supreme Champion Ewe in the Junior Show was the Champion Polled Dorset

Ewe exhibited by Olivia Waggoner. In the Open Show Supreme drives, the Champion Horned Dorset Ram shown by Paul Cassell and the Champion Polled Dorset Ewe shown by Mithoefer Dorsets were both pulled for final consideration. 2013 Judge Nominations were selected for the ballots as follows: Polled Dorsets: Evan Snyder, Tad Thompson; Craig Beckmeier; Horned Dorsets: Dan Spilde, Kent Spilde, Ron Guenther. These names will be put on the ballots send out to NAILE exhibitors for preference ranking submitted to NAILE. The junior show went late once again on Sunday night though the breeding sheep showmanship on Friday afternoon was very well participated in. CDC representative will try to keep working on getting show management to address the lateness of the Breeding Sheep Junior Show as some of the suggestions were not followed through completely.

-2013 Regional Junior Dorset Show Sites:

The sites for the upcoming 2013 Regional Dorset Shows are:

-New England: Northeast Youth Sheep Show, West Springfield, MA July 19-21

-Eastern: Keystone International Livestock Exposition, Harrisburg, PA October 6

-Great Lakes: Gibson County Fairgrounds, Princeton, IN August 31-September 1

-North Central: Moultrie Douglas County Fair, Arthur, IL July 13

-Great Plains: Tulsa State Fair, Tulsa OK Sept. 29

-Western: California State Fair, Sacramento, CA July 14

-ET & AI Paperwork Trail: Deb Hopkins will come up with a form for breeders to submit when they do ET flushes, embryo and semen purchases. It is becoming difficult to track ownership of lambs and imported sire semen information due to this new reproductive technology. Forms will be submitted to board for approval.

-Across Board Slick Shearing Policy for the Dorset Breed: Coulter Passwaters asked that this be put on the agenda as requested by members. The board members did have input from many breeders and after much discussion, Jeff Poynter moved to drop the consideration of across the board slick shearing show policy of the Dorset breed at this time.

Mark lunghuhn seconded. Motion carried.

-Credit Card Usage: Deb Hopkins reported that she did set up a credit card payment system for the CDC so payment can be made by either check, credit on account or credit card before any work is faxed, emailed or snail mailed. It will make the books much cleaner and time of service even more efficient. Mark lunghuhn moved that the CDC increase its annual service fee from \$10.00 to \$12.00 as of January 1, 2013. Coulter Passwaters seconded. Motion carried.

Coulter Passwaters moved to adjourn the meeting. Make lunghuhn seconded the motion. Motion carried. Meeting was adjourned at 10:09 PM.

**Respectively submitted,
Debra Hopkins
CDC Exec. Sec./Treas.**

DORSET PROMOTIONAL ITEMS AVAILABLE

-Dorset Baseball Caps: Cotton twill available with either a embroidered Polled Ram Head or Horned Ram Head. Hat colors: Sage Green or Chocolate Brown. **Cost is \$15.00 which includes shipping & handling.**

-History Book of The Continental Dorset Club & The Dorset Sheep: This book is 186 pages containing over 300 photos of Dorsets and those who have led the breed. **Cost is \$15.00 includes shipping & handling.**

-Registration Paper Three Ring Binder: An 11" x 8 1/2" green vinyl covered 1" wide three ring binder with 10 sheet separators to get you started! CDC logo on front cover. Holds up to 100 sheets. **Cost is \$10.00 includes S & H.**

-Ram Head Decals: Polled or Horned ram head available in two sizes. Large 12" diameter and small 6" diameter. **Cost is \$6.00 for the large decal and \$4.00 for the small decal.**

-Magnetic Bumper Sticker featuring the CDC Logo and the phrase: "The Breed for all Seasons....The Breed for all Reasons". **Cost is \$2.00 each.**

-Plastic Travel Bag for Carry-On Liquid Items: Zippered 8" X 8" Clear Plastic Bag with CDC Logo for air travel carry-on liquid items. **Cost is \$3.00 which includes shipping & handling.**

**SEND YOUR PAYMENT TO:
CDC, P.O. Box 506, N.Scituate, RI 02857**

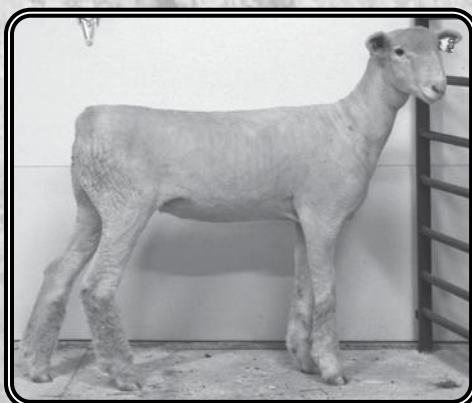
A Sneak Preview of Our Fall Lambs!



Twin Oaks 1212
Sired by "Hangover"
and dammed by Twin
Oaks 617 by "HD"
("Stella's" dam).

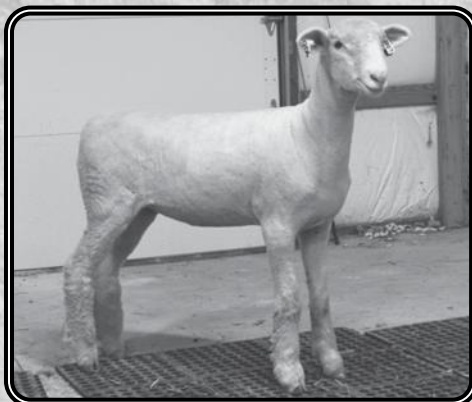
Photos
taken
12/29/12

Twin Oaks 1203
Sired by "Hangover"
and dammed by
"Scarlet", Reserve
Champion Ewe at 2010
NAILE.



Twin Oaks 1204
Twin to 1203. These
twin girls are full
sisters to "Double
Shot".

**Twin Oaks/Ross
1214**
Sired by "Farley" and
dammed by "Stella".
Her twin sister, 1213,
wouldn't cooperate on
picture day.



Twin Oaks 1206
Sired by "Hangover"
and dammed by
"Gracie", 1st Spring
Ewe Lamb at 2010
NAILE.

Twin Oaks 1205
Triplet brother to 1206.
We had only 5 ram
lambs born and are
feeding just two. This
lamb will probably
go to Ohio.



Congratulations to these NAILE winners with Twin Oaks genetics!

Rick Klampe Family – Both Reserve Champion Ram and Ewe, four total class winners all sired by Twin Oaks "Precision", the 2012 NAILE Sire of the Year!

Sid DeVries – First place spring ewe lamb both open and junior shows and best headed female in the open show dammed by Twin Oaks 727ET.

Thomas Vandeventer – First late fall ewe lamb and Reserve Champion ewe in the Junior Show on Twin Oaks 1130 purchased at the National Sale in Illinois. From last to first, great job all year long with this lamb Thomas and grandpa Dick!

**We will be
Consigning to Ohio,
Sedalia and the
National Sale in Reno.**

THE GARY SAYLOR FAMILY

937/464-7214 • Cell: 937/597-7214

Gary • Becky • Cameron • Kelsey • Cole
19570 County Road 75 • Belle Center, Ohio 43310
e-mail: gsaylor@watchtv.net

"A Driving Force in the Dorset Breed"



**TWIN OAKS
DORSETS**



DORSET COMMERCIAL CONNECTION

Sheep Records: The Key to Profitability

*by Melanie Barkley, Extension Educator
Penn State University*

A key to profitability of any livestock operation is a good set of records. Choosing what type of records to keep for your sheep operation initially starts with looking at what influences profitability of the flock. Once you decide what affects the profitability, then you can start collecting the records that help you make better informed decisions. These decisions might include tasks such as how to select the best performing sheep in your flock, how to identify sheep that should be culled, or how to identify expenses that could be decreased.

A research study at North Dakota State University, "Critical Control Points for Profitability in Sheep Production," identified four key points that determine net profit for sheep operations: sufficient volume of production to be efficient, low unit cost of production, adding value to the lambs by feeding them to market weight, and labor efficiency. So, the question now is what types of records should a producer keep in order to address these profitability points?

When I think of production efficiency, there are several criteria that come to mind. For rams, they should be more than just fast growing, muscular, and structurally correct. Any ram needs to be reproductively sound. Records that will prove his merit would include the percentage of ewes he settled in two heat cycles, growth and performance of his offspring as lambs and the performance of those lambs as sires and dams. For ewes I might look at total weaning weight of her lambs at a given age as well as post weaning growth, muscling and structural correctness. To arrive at this information, producers should keep detailed lambing records: birth date, sire, dam, sex, type of birth, birth weight. Producers should also collect weaning weights and post weaning weights. Additionally, ultrasound scan data for loin eye area and/or depth plus fat thickness is very useful for evaluating production parameters.

To address sufficient volume of production to be efficient, we need to realize that not only do we have certain expectations of each individual ewe and ram in the flock, but we also need to lamb out a large enough flock that we can spread the expenses across a larger number of ewes. Some expenses are fixed regardless of the number of sheep on the farm, while others are flexible and will vary based on the number of sheep. An example of a fixed expense would be a mortgage payment. A flexible expense example would be feed. The mortgage cost stays the same, but the feed cost increases as the number of sheep increases.

Operation expenses will have a large impact on the overall profitability of an operation. The NDSU research study looked at net profit across a number of years and their data suggests that producers should spend time looking closely at measuring and controlling operation

expenses. Feed costs are typically one of the biggest expenses in an operation so practices such as sheep selection to decrease grain consumption (an expensive feed resource) and methods to increase and improve pasture production can make a difference in the bottom line at the end of the year.

A low unit cost of production takes into account two aspects of the operation: total production and total costs. You can consider your unit cost of production in several ways, depending on the product that you are selling. For producers selling feeder lambs, you might look at cost to raise a lamb to weaning age. If you are looking at selling market lambs, you might want to consider the cost per pound of gain. For breeding stock you might look at the costs associated with raising a replacement ewe.

Adding value to lambs by feeding them out would take a closer look at cost to finish a lamb to a specified weight compared to the value of that lamb at marketing. Low cost weight gains on pasture could be compared against feeding efficiencies (pound of feed needed for a pound of gain) in a feedlot. Pasture growth rates will be slower and thus lambs take longer to reach market weight compared to fast growing feedlot lambs who are consuming more expensive grain rations.

Labor efficiency can be largely dependent on the operation facilities. Obviously, there is a cost to improving facilities, but that cost can be justified if labor cost is reduced by more than the cost of the improvement. For example, handling small square bales can be very time consuming. By purchasing a round bale feeder and switching to large bales a great savings can be realized in the amount of time spent feeding forages to the sheep. However, if this switch also requires investing in new equipment to handle the larger bales the lower labor cost may not justify the additional expense.

A key to any record keeping system is to choose a method that is both easy to use as well as easily accessible. Whether you are using a handwritten system or a sophisticated computer program, they need to be kept up to date in order to make the best use of the records. Income and expense records can be very valuable when they are compared over a number of years.

As we start this new calendar year, are there ways that you can do a better job of keeping records for your operation? Do you need to become more efficient at keeping records? Do you need to keep more detailed records? Or, do you need to develop a new system for keeping those records. Plan now to be more profitable in 2013!

The CDC has Pocket Lambing Record Books and Lambing Barnsheets free of charge upon request for CDC members. Contact the CDC office today for your 2013 lambing season needs!

SHARPSVILLE SHEEP COMPANY FARM TO TABLE DINNER

Rick & Donna Grimme, Horned Dorset breeders from The Sharpsville Sheep Company, Sharpsville, IN hosted a Farm To Table Dinner for sixty guests the last Saturday of September. For those of you involved with direct marketing, this is a great way to promote your lamb product to your customers and potential customers at the farm location. Rick and Donna served lamb chops (pops on the menu), lamb barbecue sliders, Caprese Salad made with heirloom tomatoes, coleslaw, potato salad, Amish bread from Das Bauk Haus, and apple spice cupcakes provided by J. Edwards Chocolates. Everything served at the dinner was grown, raised, and prepared locally including an assortment of wines and beers. This is a great way to promote other locally grown food products in your area and farmers are usually more than happy to even donate product for this kind of event.

The lamb served was Horned Dorset lamb grown on the Grimme Farm. Guests were given sheep ornaments created by Patti Beck of Herbs & Clay Pottery as well as bags of caramel corn provided by Charlie's Candies.

The Sharpsville Sheep Company is proud to be a Hoosier Homestead Centennial Farm. The farm has been in the family through a Land Grant signed by President Millard Fillmore on sheep skin in 1849. Rick's Great Great Great Grandfather received the land for enlisting in the United States Army.



**Production-oriented,
Performance-tested®
For Sale**

K Bar K Farm

Ken, Kathy and Nathan Soder
www.kbarkfarm.com

Workin' for a Living

That's what we expect from our flock. We select our sheep for true Dorset traits, then step back and let them do their job.

- Raised in a pasture-based system.
- Objectively selected for outstanding maternal traits balanced with growth and carcass characteristics using Lambplan EBVs (Expected Breeding Values)
- Imported genetics with outstanding production
- These rams and ewes are ready to go to work for you

Phone: 814-669-1374

5867 Eberle Road • Petersburg, PA 16669
info@kbarkfarm.com

ANNOUNCEMENTS

GREAT PLAINS & WESTERN DIRECTOR ELECTIONS

Just a reminder to all CDC lifetime members in the Great Plains & Western Regions that you will be receiving voting ballots in late February for your area's director. PLEASE make sure that you fill out these ballots and return to the CDC by the voting deadline. Thank-you in advance for your attention to this very important matter.

2013 NATIONAL DORSET SALE PLANS BEING MADE FOR RENO

The 2013 National Dorset Sale, that also features the Annual Meeting of the CDC, will be held in conjunction with the Nugget All American Sale in Sparks, NV. The dates for the sale are May 30-June 1. Plans for the event are being finalized with sale management and the hosts this year, the California Dorset Association.

The CDC Annual Meeting and Social is being planned for Thursday night at 5:00 PM at an area restaurant close by. All the final details will be published in the next Dorset Connection but please get this special event marked down on your 2013 calendar today! Looking forward to bringing the National Dorset sale out West.

DORSET HALL OF FAME PROGRAM 2013

Last year the CDC Board of Directors created a "Dorset Hall of Fame" to recognize the many individuals that have helped to make the Dorset breed great. At Illinois last year, there were 5 individuals inducted as the first class into the Hall of Fame. It was a wonderful addition to the national meeting and a great way for the CDC to be able to recognize these people that mean so much to the Dorset breed. This year at Reno we will be inducting an additional 2 such individuals into the Hall.

Nomination forms can be found at the CDC website: www.dorsets.homestead.com. Please take a minute to download, fill out and send in a form on one of the many deserving individuals in the Dorset breed, past and present. With the sale being out on the West coast this year, it would be wonderful to recognize individuals from that area so we can make sure they or family will be able to attend the induction.

Nominations need to be into the

CDC Office by April 15, 2013. People selected to the "Hall of Fame" will be recognized by the CDC with an appreciation plaque at the annual meeting and will be listed on the CDC website recognizing their contributions to the Dorset breed. Any person in the sheep industry may make nominations. Once a name is submitted it will remain nominated so no repeat nominations need to be made the following year.

ET FLUSH & SEMEN SALES FORMS NOW REQUIRED FOR REGISTRATION

With the ever growing reproductive technology becoming more readily available and with the problems this causes with the conventional registration procedures in place, the CDC has developed two new forms to be used in ET and some AI registrations.

The first form is an "Embryo Transfer Flush Form". This form needs to be filled out at the time of the flush as the technician needs to sign the form, and sent into the CDC office before any lambs can be registered from that flush. This form will also be used if one sells any embryos from a flush with certain signature provisions as explained on the form.

The second form is a "Sale of Semen Declaration Form". This form needs to be filled with the CDC office at any time a breeder obtains semen from a ram they do not own, foreign and domestic. This form will replace the conventional ram lease form in the case of AI and ET breedings. If the semen is from a foreign registered Dorset ram, the CDC does recognize other Dorset association pedigrees but a copy of that pedigree needs to be filed at the same time and the registration of that ram into the CDC registry also needs to be paid for.

Ownership of the sire and dam is the basic requirement for registration of their offspring so when this paper trail is disrupted by technology then the CDC does need to have further paperwork submitted to prove ownership. Thank you in advance for your understanding in getting these forms completed and sent in for your future registrations. The filing of this paperwork takes effect as of January 1, 2013 for any registrations being done after that date. Technicians should have given you certificates when they did your ET or AI work so you should have no trouble in getting the new forms filled out and submitted. If you have any questions please feel free


to call the CDC office. Forms are now available on the cdc website: www.dorsets.homestead.com

CREDIT CARDS NOW ACCEPTED & ANNUAL SERVICE FEE INCREASE

The CDC now accepts credit cards for payment. Credit card information can be submitted by either calling the CDC office, sending an email with the required information or filling out the schedule of rates form that gets mailed in. The CDC office will not keep any record of this information and the information will need to be communicated each time work is done. You can choose the most secure way for submission of the information that makes you feel the most comfortable.

Since credit card usage is now available, they will be no work mailed, emailed or faxed without payment of some kind. Don't forget you can still keep balances on your accounts to prevent any disruption in timely service. At year end, any open invoice over \$20.00 will be mailed out and if payment is not received, it can affect the status of future work getting done. The CDC does not have the capability of costly bill collection so your attention to these matters are greatly appreciated.

The CDC Board has also recently approved the increase of the Annual Service fee to \$12.00 per year as of January 1, 2013. This is a once a year fee for all adult CDC members and non-members for doing registry or transfer work with the CDC. This fee is waived the year that one joins the CDC and CDC junior members do not need to pay this fee.



ROYAL~S
Graphic Design Services

DALE L. SMITH
Owner/Graphic Designer
royal-s@earthlink.net

Specializing in the Livestock Industry!

17917 Brim Road
Bowling Green, OH 43402
ph/fx 419.352.2332

"DORSET ADVANTAGE" REGISTRY PROGRAM BEING DEVELOPED

The CDC Board has appointed a committee to develop the "Dorset Advantage" registry program. This program would be a half blood Dorset or greater female appendix registry program. These animals would never be eligible for the purebred registry and would be kept separate. It would be similar to the beef cattle appendix registries out there like Shorthorn Plus and Lim Flex. The intent would be to promote and verify the Dorset influence in the commercial ranks.

It is the hope to incorporate show classes for these individuals at sheep shows across the country. In many parts of the country, the show ring has changed and classes for crossbred females has become very popular, especially amongst the youth. The CDC would like to incorporate some classes at their national events also.

The "Dorset Advantage" registry would allow breeders to keep track of parentage and pedigree, and verify ownership. Quality pedigree information is just as valuable to the crossbred breeder as it is to the purebred one, and the CDC would like to be able to provide services for our Dorset cross breeders to enable them to

promote and market their product to their best advantage.

If you have any suggestions or input please feel free to contact Committee Chairperson Casey Sidwell at: csidwell97@yahoo.com

DORSET BREED STANDARD INSPECTION POLICY CHANGES

At the recent CDC Fall Board Meeting, it was voted to discontinue with the breed standard inspections at the National Sales. This was originally done to educate breeders to the breed standard as well as the judges of the Dorset breed. It has been a very effective tool but it has become more and more difficult to get judges to participate. The board has reserved the right to do future inspections when the breeders would like to have concrete information on where the breed is at breed standard wise. Of course, national event consignors or exhibitors would be notified in advance of the inspection.

The CDC board has decided to shift focus on completing the Dorset Breed Standard Manual and getting it published and posted online. This is a step by step description of the breed standard with visual photographs of good and bad

points. This will be an invaluable tool in educating judges and breeders on the Dorset breed ideals. It will be easily accessible and easy to use. The CDC office can supply it to all judges and future breeders of Dorset sheep to educate them about the Dorset breed standard.

The CDC will continue to present breed standard educational activities at all of our Regional Junior Dorset shows. It has been done at the All American in the past but it is always difficult to fit in time wise for all Dorset exhibitors to attend, as it is an action packed weekend. The CDC hopes to maybe incorporate a brief presentation at the National Junior Dorset Association each year in Louisville to cover one part of the standard on a rotational basis.

The CDC remains committed to the Dorset Breed Standard by printing this manual and getting it out to the people that need to know. It is an important part of a breed association to provide educational materials on the breed standard and it is felt this will be a great way to accomplish this goal.

The CDC will also maintain its certified judges list and to provide Dorset breed standard educational materials to judges of National Dorset events. This list is posted on the CDC website for use at all shows.

THORNSBROUGH SHEEP FARMS



Thornsbrough 17

Purple Ribbon Farms purchased this tremendous ewe at the 2012 Ohio Dorset Sale. She was 2nd place Yearling Ewe at the 2012: NAILE Jr. Show & IL State Fair.

Bruce, Jennifer, Alex, and Allyson Thornsbrough
2698 S. 675 W. Rd.
West Lebanon, IN 47991
765/893-4878

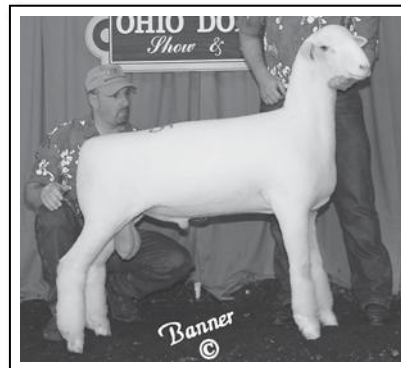
We would like to thank the following buyers:

Purple Ribbon Farms,
Larry Inbody,
Hal Schuman,
Barbara Gingras

for purchasing our entries at the 2012 Ohio Dorset Sale.

We have an excellent set of lambs sired by

**"Transformer"
"Bold Ruler"
and
Shepherd's View
1012 E.T.**



"Transformer"

Saylor Twin Oaks 1124, is a full brother to "Hangover", the 2011 Reserve National Champion ram at NAILE. We would like to thank Stan & Brent Mithoefer for allowing us to purchase part part interest in this ram.

John and Katy Thornsbrough
18361 E. 3100 N. Rd.
Rossville, IL 60963
217/474-7626
thorsheep1@aol.com

YOUTH NEWS

2012 NATIONAL JUNIOR DORSET ASSOCIATION ANNUAL MEETING MINUTES

The meeting was called to order by President and North Central Director Sarah Bush at 7:00 PM at the KY Exposition Center on November 10, 2012. Introduction of the other board members were made: Vice President and Great Plains Director Monica Ebert, Secretary/Treasurer and Eastern Director Troy Longenecker, Western Director Johanna DeJoria, Great Lakes Director Tyler Myers, New England Director Ashley Pinckney and Director-At-Large Michael Pope. Sarah had the junior members introduce themselves, tell what kind of Dorset they raise and if they could be an animal what would they be and why. There were about 75 people in attendance. Troy Longenecker read the minutes from the 2011 Annual Meeting. Minutes were accepted as read. Troy also presented the 2011-2012 Treasurer's Report. Income was \$2,457.69 and expenses were \$3,405.04 for a balance of \$34,284.10. Treasurer's report was accepted as read.

Announcements & Reports:

-All-American Junior Show: Johanna DeJoria gave a report on the 2012 All-American Junior Show that was held in Des Moines, IA. It was an exceptional quality Dorset show with a lot of extra curricular activities for the exhibitors and their families and the Dorset BBQ was well attended by the Dorset exhibitors & their families. Keegan Padgett was the Horned Dorset Top Gun winner and Sidney DeVries was the Polled Dorset top gun winner. Johanna also reported that the 2013 All-American Junior Show will be held at Michigan State University in East Lansing, MI. The dates of the show are July 5-7, 2013. The Dorset exhibitor

barbecue lunch and meeting will be held on Saturday as usual for all the Dorset exhibitors and their families. In 2014 the show will be in Kansas at the State Fairgrounds in Hutchinson,

-Dorset Futurity Program: Deb Hopkins announced and awarded plaques to the regional 2012 Polled Ewe Lamb winners: Great Lakes: Michael Pope with his Spilde Brothers bred ewe lamb; North Central: Sidney DeVries with his Lauden Acres bred ewe lamb; New England: Ashley Pinckney with her Millennium Farms bred ewe lamb; Great Plains: Austin Hicks with his Northern Starr Livestock Services bred ewe lamb and Eastern: Emily Ellison with her Twin Oaks Dorsets bred ewe lamb. Final National placing in the polled ewe lamb, horned ewe lamb and yearling ewe futurity would be determined after the junior show on Sunday as there are 11 ewe lambs and 2 yearlings being shown. She thanked all the breeders for nominating their ewe lambs and the junior buyers for participating in the program.

-NAILE Junior Show: Michael Pope announced that Horned Dorset junior show would be last in the center ring with Jake Reister judging and the Polled Dorsets will be the third breed in the North Ring under Ryan Hendricks. He reminded exhibitors that the owner must be at the head of their animals and to be organizing the state/regional flocks for the end of the show. He also thanked the exhibitors for participating in the Showmanship on Friday night as the Dorset exhibitors did very well in the classes.

-Scholarship: The 2012 Scholarship Winners are Monica Ebert, St. George, KS, Troy Longenecker, Annville, PA and Sidney DeVries, Freeport, IL. Sarah Bush presented the checks to all recipients as they were all very deserving.

-Dorset Youth Ewe Grant Program: Sarah Bush announced the application deadline for the new grant program and had applica-

tions available for those interested.

New Business:

-Election of 2012-2013 Directors:

Voting took place and Sarah Bush announced the following elected directors: New England: Ashley Pinckney, NY; Eastern: Troy Longenecker, PA; Great Lakes: Tyler Myers, OH; North

Central: Sarah Bush, MO; Great Plains: Austin Hicks, OK; Western: Johanna DeJoria, OR; and Directors At Large: Michael Pope, IN and Britton Francis, MO.

-Fundraising: Sidney DeVries moved to have the annual gift basket raffle for 2013 at the Ohio Dorset Sale in March. Britton Francis seconded. Motion carried.

-Midwest Preview Show: Klarissa Minish announced the dates and details for the Midwest Preview Junior Show in Missouri.

Sidney DeVries motioned to adjourn the meeting. Britton Francis seconded. Motion carried. The meeting was adjourned at 8:15 PM. Pizza and drinks were served immediately afterwards to the Dorset junior exhibitors and their families.

Directors Re-Organizational Meeting:

The board members elected the following slate of officers for 2012-2013: President- Sarah Bush, Vice President- Michael Pope, and Secretary/Treasurer- Ashley Pinckney.

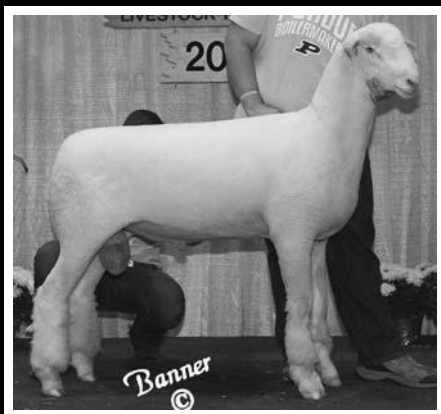


2012-2013 National Junior Dorset Association Board of Directors
(L to R): Austin Hicks; Troy Longenecker; Ashley Pinckney, Sec./Treas.; Sarah Bush, President; Michael Pope, Vice President; Johanna DeJoria; Tyler Myers, Monica Ebert, Retiring Director; and Britton Francis.

2012 Tracy Repasky Dorset Scholarship Recipients
Top: Monica Ebert, St. George, KS - Kansas State
Middle: Sidney DeVries, Freeport, IL - Univ. of Wisconsin-LaCrosse
Bottom: Troy Longenecker, PA - Penn State



Celebrating Another Great Year!

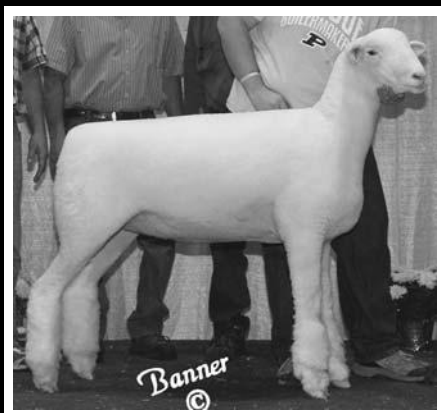


PD 136

Champion Ram National Jr. Show
Champion Ram Great Lakes Regional
2nd Spring Ram Lamb National Open Show

PD 134

Res. Champion Ram All American Jr. Show
Res. Champion Ram Great Lakes Regional
1st Late Fall Ram Lamb Kentucky State Fair
2nd Late Fall Ram Lamb Ohio State Fair

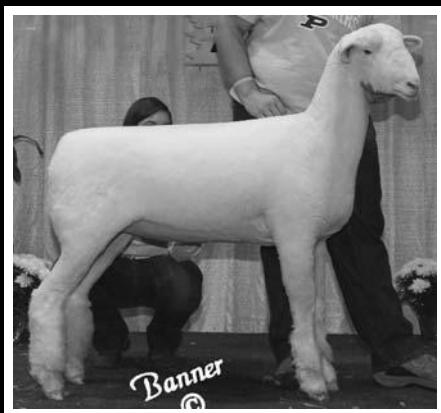
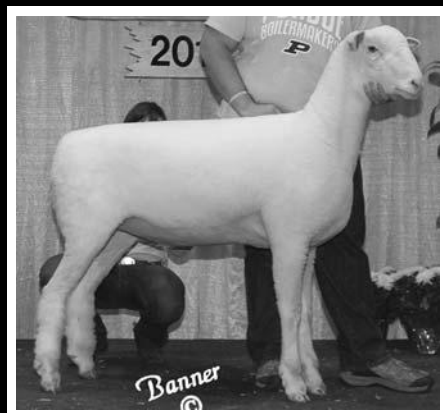


Spilde 8737

Champion Ewe Kentucky State Fair
1st Place National Futurity Winner
1st Early Fall Ewe Lamb National Jr. Show
1st Early Fall Ewe Lamb Ohio State Fair
1st Fall Ewe Lamb Great Lakes Regional

PD 122

2nd Late Fall Ewe Lamb Ohio State Fair
3rd Late Fall Ewe Lamb National Jr. Show
3rd Late Fall Ewe Lamb Kentucky State Fair
4th Late Fall Ewe Lamb National Open Show



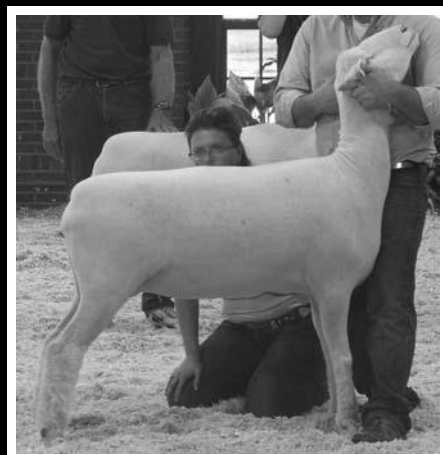
PD 137

1st Spring Ewe Lamb Great Lakes Regional
2nd Spring Ewe Lamb National Jr. Show
2nd Spring Ewe Lamb Ohio State Fair
2nd Spring Ewe Lamb Kentucky State Fair

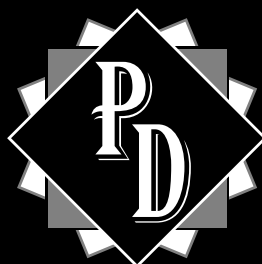
PD 90

1st Slicked Yearling Ewe Illinois State Fair
1st Slicked Yearling Ewe North Central
Regional Jr. Show

Congratulations Crouch Dorsets, IL,
on your success with her! They got
her at the Illinois Sale as a Lamb!



Watch for our Spring Sale consignments at Ohio and Illinois! We think they'll be our best yet!



NEW Address...

POPE DORSETS

4395 South 600 East • Greenfield, IN 46140

MICHAEL POPE

317/966-3091

popedorsets@aol.com

YOUTH NEWS, cont.

2013 ALL-AMERICAN JUNIOR SHOW BEING HELD IN EAST LANSING, MI

The 2013 All-American Junior Sheep Show is going to be held at the Michigan State University, Livestock Pavilion, East Lansing, MI from July 5-7, 2013. Our Michigan hosts, headed up by Judy Moore, are planning another stellar event and we look forward to returning to this great on-campus facility. The National Suffolk Junior Show will also be held at MSU during the weekend to enable easier traveling plans for our junior sheep owners and their parents. The All-American is the premier junior breeding sheep show in the country and this year will once again feature classes for both Polled and Horned Dorsets. The All-American will once again offer slick shorn classes in the Polled and Horned Dorset shows. Judges for this year's event will be Farabee McCarthy, Matt Scramlin and Dave Clouser.

If you have never attended an All-American Junior Show please make plans to attend this very special event! It is much more than just a sheep show as there are several activities for the whole family. Several activities are in the planning stages for the exhibitors and their families to enjoy. Look for more information on the entry form. Entries close June 1st. Check out the All-American Website: www.allamericanjuniorshow.com for entry information.

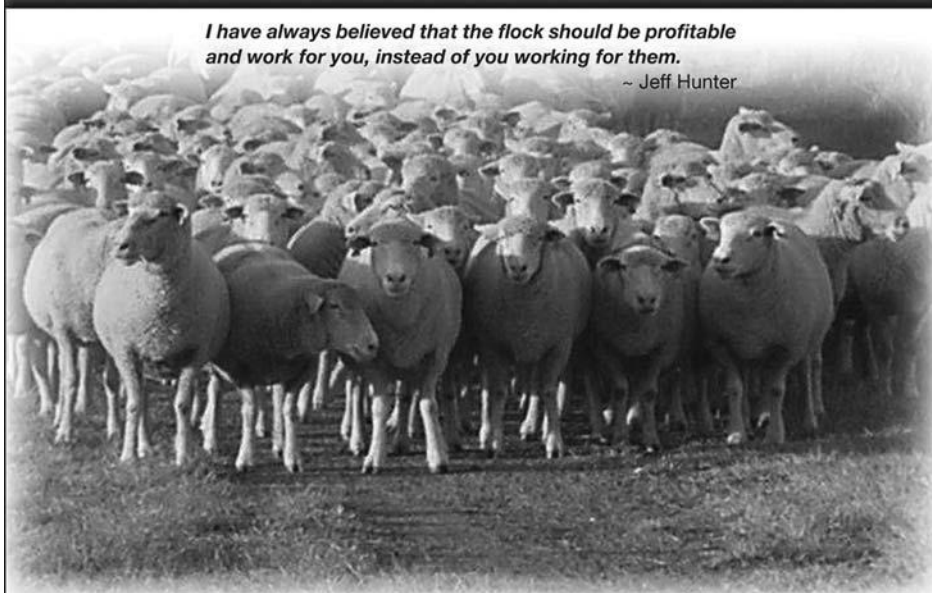
The Continental Dorset Club needs to raise funds to support the Dorset shows in the All-American. **Once again, Dorset breeders will be donating ewe lambs to be sold at the Ohio Dorset Sale in March to raise funds to go directly towards the Dorset show at the All American.** Your bidding support on these ewe lambs will be very much appreciated. Thank-you very much to the breeders for supplying these ewe lambs!

We will also be looking for class sponsors at the upcoming Ohio Dorset Sale and the National Dorset Sale in Reno. If you would like to be a class sponsor and will not be in attendance please feel free to contact the CDC Office (401)647-4676 or cdcdorset@cox.net with your sponsorship. The CDC needs to supply about \$2200 to have polled and horned dorset classes at the All-American. Thank-you in advance for your sponsorship. The Dorset breed is unsurpassed in its support of this special show thanks to all of you. We invite you all to attend the All-American this year at Michigan State University.

REAL DORSETS *work for you*

I have always believed that the flock should be profitable and work for you, instead of you working for them.

~ Jeff Hunter



- Traditional Style Production Dorsets ■
- Easy Care - Easy Lambing Ewes ■
- Closed Flock - OPP & Footrot Free Since 1988 ■
- Accelerated Lambing - Fall Born Lambs ■
- Fast Gaining Heavy Muscled Lambs ■
- # 1 In Registrations 2002, 2004, 2008, 2009 & 2012 ■

Fall Lambing Success

In 2011, 67 of the 120 fall lambing ewes lambed in the first 17 days. The first of the 2011 fall market lambs sold January 19th and averaged 137.50 lbs. In 2012 we lambed 140 ewes in September and October.

HUNTER DORSETS

JEFF HUNTER

9102 E 325 N | Lafayette, IN 47905 | www.hunterdorsets.com
(765) 563-1003 (office) | (765) 426-3099 (cell)

Transportation Available

ALL-AMERICAN JUNIOR SHOW **RAFFLE TICKETS**

Cost \$5.00 each or 5 for \$20.00

1st Prize: \$1,000 Cash

2nd Prize: Sydell Hydraulic Scissor Lift Trimming Stand

3rd Prize: 12' X12' Pop-Up Canopy

Tickets available at the CDC Office and five tickets will be mailed out with your first registry work of the year. Please take your time to send these tickets back into the CDC Office as last year your support was tremendous!!



LETTER FROM NATIONAL JUNIOR DORSET ASSOCIATION PRESIDENT SARAH BUSH

Happy New Year,

The junior show at NAILE was very successful this past year. Congratulations to all of the winners, and to the futurity winners with their polled and horned ewes, hopefully the futurity program will continue to expand, including on the horned Dorset side. The junior meeting in Louisville was well attended I am excited about working with a great officer team for this up-coming year.

With lamb prices and wool prices being what they are, it is an excellent time for juniors to increase their flock size and become more involved with their sheep. The Ohio sale and then the Illinois Dorset sale are coming up and both of these shows will be a great place purchase your futurity ewes, as well as the Midwest Stud Ram sale in Sedalia in June. The futurity program is an excellent opportunity to recoup some of your investment in a ewe. This program allows breeders to promote their lines, and provides our young people with opportunities to be more involved in showing and building relationships with other juniors.

So that our association can provide more opportunities for our juniors, there will be a gift basket silent auction at the Ohio Dorset Sale, as a fund raiser for the junior association. If you know of someone, or if you are interested in helping by contributing, please contact your representative from the junior board from your region.

It is never too early to start making plans for the junior shows this summer, I would like to invite you all to Missouri for the Midwest Preview Show in June, and then back to the mid-west for the All American Junior Show in East Lansing, Michigan this year. Now is the time to start working on your promotional contest entries, and scholarship applications for the All American Junior Show. If you have not had the chance to experience either one of these family oriented shows, I highly recommend them. At these shows you can bet that the junior Dorset members will be getting together to enjoy some food, fun, and great company. There will also be the six regional junior Dorset shows this summer across the country, that offer great opportunities for junior Dorset exhibitors.

I look forward to seeing you all at the upcoming events and to making this upcoming year a great one.

Sincerely, Sarah Bush

was changed a few years ago to where junior exhibitors 21 years old and under as of January 1st of the current year are eligible to show.

To avoid any confusion, following are the eligibility requirements for these shows as outlined by the CDC:

- 1) Exhibitor must be a current member of the CDC whether in the youth enrollment program or a lifetime member.
- 2) Exhibitor 21 years old and under as of January 1, 2013 is eligible. There is no lower age limit but the exhibitor must be able to lead and/or control the head of his/her animal in the show ring.
- 3) Exhibitor must be present to show their own animals unless physically impaired. The junior owner will need to be at the head of the animal controlling it in the show ring, unless of course they have more than one entry in a class in which case another junior exhibitor showing their second animal is acceptable.
- 4) Sheep must be registered in the youth's name. Youth partnerships are acceptable except for futurity animals which must be in the individual youth owner's name ONLY. Farm names or

"family" ownerships are not acceptable.

5) Exhibitor can show at more than one regional junior dorset show per calendar year, the CDC strongly encourages juniors to at least show at the regional show in the region in which they reside

6) EWE FUTURITY PROGRAM:

Your futurity ewe can earn double points at a regional junior show for the futurity ewe program, only the highest regional showing will be doubled, any others will count as a regular show.

Regional junior shows are sometimes held in conjunction with existing shows so there definitely may be other show specific rules and regulations that apply. Please be aware of these requirements when making out your entries.

The Continental Dorset Club supports youth sheep shows around the country by supplying over \$8000 a year for awards and premiums. The CDC remains committed to the Dorset youth as the juniors of today are the future of the breed tomorrow. Good luck to all the Dorset youth in 2013!

2013 DORSET YOUTH GRANT PROGRAM WINNERS ANNOUNCED

The CDC and National Junior Dorset Association implemented a Dorset Ewe Youth Grant Program. Applications for the first year were due this past December and 16 highly qualified individuals applied for the two \$500 grants. The selection committee had a difficult time selecting the 2013 winners but it was a welcomed task to see all these enthusiastic young Dorset breeders.

Emily Ellison of Newport TN was named the junior age division recipient. Emily, age 13, wants to become a Dorset breeder and improve the quality of her breeding stock. The senior winner was Brooke Kirchhofer of Berne, IN. Brooke, 18, started showing Dorset sheep through the inspiration of her ag teacher and family. Brooke would like to increase the size of her wether type Dorset flock.

Both recipients will receive \$500 towards the purchase of a registered Dorset ewe. The ewe can be bought privately or at a sale, the ewe can be of any age but just can not be bought from a family member. The actual awarding of the grant money will not be made until the registration certificate has been sent in and the transfer processed in the CDC office.

Don't miss out on applying for these grants this year. Deadline is December 1st. Applications available on the CDC website: www.dorsets.homestead.com

2013 REGIONAL JUNIOR SHOW SITES AND ELIGIBILITY REQUIREMENTS

Following are the show sites for the upcoming 2013 regional junior shows:

***New England** - Northeast Youth Sheep Show, West Springfield, MA July 19-21

***Eastern** - Keystone International Livestock Exposition, Harrisburg, PA Oct 6

***Great Lakes** - Gibson County Fairgrounds, Princeton, IN August 31-Sept 1

***North Central** - Moultrie Douglas Fair, Arthur, IL July 13

***Great Plains** - Tulsa State Fair, Tulsa, OK September 29

***Western** - California State Fair, Sacramento, CA July 14

Entry and more details will be printed in the next newsletter but hopefully this will be enough information to start making your show season plans.

A junior member can show at more than one regional show per calendar year. Also, the upper age limit

2012 NATIONAL OPEN POLLED DORSET SHOW

N.A.I.L.E. LOUISVILLE, KENTUCKY



Res. Grand & Fitted Junior Champion Ram
Fitted Winter Lamb - Klampe 202
 Ashley & Kristina Klampe, Jefferson, OR



Fitted Reserve Senior Champion Ram
2nd Fitted Yearling Ram - Ram & Ewe 0623
 Ram & Ewe Farm, South Solon, OH



Fitted Res. Jr. Champ. Ram & Best Headed
Fitted Spring Ram Lamb - Riverwood 5825
 Riverwood Farms, Powell, OH

-Fitted Yearling Ram: 1)*Grand Champion, Champion Fitted & Senior Champion Fitted Ram:* "Whiskey" Ram & Ewe Farm 0599F, Millennium Farms, Oxford, IN

2)*Senior Reserve Champion Fitted Ram:* Ram & Ewe Farm 0623, Ram & Ewe Farm, South Solon, OH

3)Haven Point Dorsets 1106, Kristina Repasky, Lonsdale, MN

4)"Great White" Poynter Sheep Farm M27, Poynter Sheep Farm, Marshall, IL & Robert Schembs, Colfax, IN

5)"God Focker" Haven Point Dorsets 1104, Ram & Ewe Farm, South Solon, OH

-Fitted Early Fall Ram Lamb: 1) Spilde 8749, Luke, Avery, Brandt, Cade, Claire & Becket Spilde, Stoughton, WI

2)"Double Shot" Saylor Twin Oaks 1111, Kristina Repasky, Lonsdale, MN

3)McDaniel 12-12, Thomas Crome, Marshall, IL

4)Millennium Farms 1154F, Kylie Schakel, Oxford, IN

5)Verhaeghe KRV 2510, Kaitlyn Verhaeghe, Argos, IN

6)Riverwood Farms 5761 ET, Riverwood Farms, Powell, OH

7)Purple Ribbon Farms 1251, Thomas Vandeventer, Camargo, IL

8)Spilde 8748, Luke, Avery, Brandt, Cade, Claire & Becket Spilde, Stoughton, WI

9)Shane Lobdell 411, Shane Lobdell, Lena, IL

-Fitted Late Fall Ram Lamb: 1)Pettersson-Estes 2215, Mona Lisa Pettersson Estes, Sanger, CA

2)Riverwood Farms 5787, Riverwood Farms, Powell, OH

3)Pettersson-Estes 2237, Mona Lisa Pettersson-Estes, Sanger, CA

-Slick Shorn Fall Ram Lamb: 1)Bel Mar Farm 1649, Kodi & Kamron Paulus, Casstown, OH

-Fitted Winter Ram Lamb: 1)*Reserve Grand Champion, Reserve Champion Fitted & Junior Champion Fitted Ram:*

Klampe 202, Ashley & Kristina, Klampe, Jefferson, OR

2)Mithoefer 2028, Mithoefer Dorsets, Lafayette, IN

3)Pine Ridge Dorsets 12061 ET, Olivia Waggoner, East Berlin, PA

-Fitted Spring Ram Lamb: 1)*Reserve Junior Champion Fitted Ram:* Riverwood Farms 5825, Riverwood Farms, Powell, OH

2)PD 136, Michael Pope, Greenfield, IN

Slick Shorn Champion Ram
Slick Wtr./Spr. Ram Lamb-Riverwood 5807
 Riverwood Farms, Powell, OH



3)Pettersson-Estes 2275, Mona Lisa Pettersson-Estes, Sanger, CA

4)Mithoefer 2040, Mithoefer Dorsets Lafayette, IN

5)Pettersson-Estes 2254, Mona Lisa Pettersson-Estes, Sanger, CA

6)MGM 1211, Grace Murphy, Plymouth, IN

7)Ram & Ewe Farm 0673, Abigail Rasys, Brimfield, MA

8)Turtle Mead 1210, Paul & Nancy Wissinger, Sinking Spring, PA

9)MGM 1028, Blake Kessler, LaPorte, IN

-Slick Shorn Winter/Spring Ram Lamb: 1)*Grand Champ. Slick Shorn Ram:* Riverwood Farms 5807, Riverwood Farms, Powell, OH

2)*Reserve Champion Slick Shorn Ram:* Verhaeghe KRV 2555, Kaitlyn Verhaeghe, Argos, IN

-Pair of Ram Lambs: 1)Mona Lisa Pettersson-Estes, Sanger, CA

2)Riverwood Farms, Powell, OH

-Best Headed Ram: Riverwood Farms 5825, Riverwood Farms

-Fitted Early Yearling Ewe: 1)*Grand Champion, Grand Champion Fitted & Senior Champion Fitted Ewe:* "Bazinga" Jensen G051, Mithoefer Dorsets, Lafayette, IN

2)Narrow Lanes 720, Riverwood Farms, Powell, OH

3)Mithoefer 1012, Mithoefer Dorsets, Lafayette, IN

4)Lauden Acres 740, Johanna DeJoria, Newberg, OR

5)"Bama Girl" Shepherds View 10102, Kaitlyn Verhaeghe, Argos, IN

6)Haven Point Dorsets 1023, Kristina Repasky, Lonsdale, MN

7)Snyder 11012, Austin Hicks, Stillwater, OK

8)Thornsborough 17, Thomas Vandeventer, Camargo, IL

9)Ram & Ewe Farm 0607F, Kylie Schakel, Oxford, IN

10)Nelson 11009, Nelson Dorsets, Eaton, CO

-Fitted Late Yearling Ewe: 1)*Reserve Senior Champion Fitted Ewe:* Lauden Acres 750, Sarah Moore, Jerseyville, IL

2)Mithoefer Dorsets 1077, Riverwood Farms, Powell, OH

3)Pettersson 2172, Mona Lisa Pettersson-Estes, Sanger, CA

4)Sugarloaf Dorsets 1192, Sugarloaf Dorsets, Pipestone, MN

5)Pine Ridge Dorsets

1165 ET, Kristina Repasky, Lonsdale, MN

6)Pine Ridge Dorsets

1135 ET, Olivia Waggoner, East Berlin, PA

7)Pine Ridge Dorsets

117 ET, Austin Hicks, Stillwater, OK

8)Sugarloaf Dorsets

1194, Sugarloaf Dorsets, Pipestone, MN

9)Pine Ridge Dorsets

1195, Olivia Waggoner, East Berlin, PA

10)Nelson 11009, Nelson Dorsets, Eaton, CO

11)Mithoefer 1012, Mithoefer Dorsets, Lafayette, IN

12)Mithoefer 2040, Mithoefer Dorsets Lafayette, IN

13)Mithoefer 2028, Mithoefer Dorsets, Lafayette, IN

14)Mithoefer 2028, Mithoefer Dorsets, Lafayette, IN

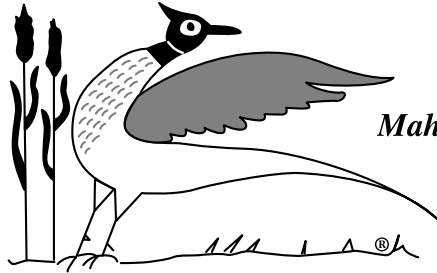
15)Mithoefer 2028, Mithoefer Dorsets, Lafayette, IN



Res. Slick Shorn Champion Ram-Open & Jr.
2nd Slick Wtr./Spr. Ram Lamb - KRV 2555
 Kaitlyn Verhaeghe, Argos, IN

LAUDEN ACRES

COMMITTED TO EXCELLENCE



*Division of
Mahantongo Game Farms
Established 1935*

Attention!

In 2013, we plan to attend the following Shows & Sales:

- ◆ Ohio Dorset Show & Sale - Eaton, OH
- ◆ Illini All Breeds Spring Sale - Bloomington, IL
- ◆ Midwest Stud Ram Sale - Sedalia, MO

Special Invitation!

We extend a special invitation to visit our farm and see the quality of our Dorsets being offered for sale this year. In addition, take a look at our stud rams and brood ewe flock.

*Looking Forward to Visiting With You...
Don't Hesitate to Contact Us!*

LAUDEN ACRES

POLLED DORSETS

Flock Consultants:

Timothy Hall
Narrow Lanes Dorsets
570/556-6381 (Cell)

Dick Kuzemchak
814/280-2817 (Cell)

Lynn A. Laudenslager
570/758-6284 (Office)
570/847-9817 (Cell)

Mahantongo Game Farms

559 Flying Eagle Road
Dalmatia, PA 17017
570/758-2095 (Fax)
mgf@tds.net (Email)
www.laudenacres.com

2012 NATIONAL OPEN POLLED DORSET SHOW, CONT. N.A.I.L.E. LOUISVILLE, KENTUCKY



Fitted Reserve Senior Champion Ewe
Fitted Late Yearling Ewe - Lauden Acres 750
Sarah Moore, Jerseyville, IL



Fitted Reserve Junior Champion Ewe
Fitted Late Fall Lamb - Bauck 1-72
Kristina Repasky, Lonsdale, MN



Slick Shorn Champion Ewe
Slick Shorn Yearling Ewe - A. Hicks 1109
Austin Hicks, Stillwater, OK

Slick Shorn Yrl. Ewe: 1)**Grand Champion Slick Shorn Ewe:** A Hicks 1109, Austin Hicks, Stillwater, OK

2)**Reserve Grand Champion Slick Shorn Ewe:** Kylie Schakel 1051, Kylie Schakel, Oxford, IN

3)Riverwood Farms 5676, Riverwood Farms, Powell, OH

4)NSLS 10925, Kristina Repasky, Lonsdale, MN

5)NOC YD-7260-1001, Northern Oklahoma College, Tonkawa, OK

6)Haven Point Dorsets 1027 ET, Kristina Repasky, Lonsdale, MN

7)Verhaeghe KRV 1510, Kaitlyn Verhaeghe, Argos, IN

8)Riverwood Farms 5586, Riverwood Farms, Powell, OH

9)Triple K Dorsets 0279, Austin Hicks, Stillwater, OK

10)Bel Mar Farm 1637, Kodi & Kamron Paulus, Casstown, OH

-Pair of Yearling Ewes: 1)Mithoefer Dorsets, Lafayette, IN

2)Riverwood Farms, Powell, OH

3)Olivia Waggoner, East Berlin, PA

4)Sugarloaf Dorsets, Pipestone, MN

5)Austin Hicks, Stillwater, OK

-Fitted Early Fall Ewe Lamb: 1)Klampe 119, Ashley & Kristina Klampe, Jefferson, OR

2)Moore 014, Sarah Moore, Jerseyville, IL

3)McDaniel 12-3, McDaniel Ranch, Greenfield, IN

4)Spilde 8737, Michael Pope, Greenfield, IN

5)Lauden Acres 753, Sidney DeVries, Freeport, IL

6)Crome 2127, Thomas Crome, Marshall, IL

7)Poynter Sheep Farm Y-4, Poynter Sheep Farm, Paris, IL

8)NSLS 11294, Kaitlyn Verhaeghe, Argos, IN

9)Pettersson-Estes 2208, Mona Lisa Pettersson-Estes, Sanger, CA

10)Pine Ridge 12014 ET, Christopher MacCauley, Atglen, PA

-Fitted Late Fall Ewe Lamb: 1)**Reserve Fitted Junior Champion Ewe:** Bauck 1-72, Kristina Repasky, Lonsdale, MN

2)Thistledown 531, Robert Schembs, Colfax, IN

3)Saylor Twin Oaks 1130, Thomas Vandeventer, Camargo, IL

4)PD 123, Michael Pope, Greenfield, IN

5)Poynter Sheep Farm Y-8, Poynter Sheep Farm, Paris, IL

6)Ram & Ewe Farm 0666, Ram & Ewe Farm, South Solon, OH

7)Riverwood Farms 5780, Riverwood Farms, Powell, OH

8)PD 121, Michael Pope, Greenfield, IN

9)NSLS 11309, Kaitlyn Verhaeghe, Argos, IN



Best Headed Polled Dorset Ewe
Spring Ewe Lamb - Sid's Dorsets 1211 ET
Sidney DeVries, Freeport, IL

10)Sid's Dorsets 1125, Sidney DeVries, Freeport, IL

-Slick Shorn Fall Ewe Lamb: 1)NSLS 11301, Kristina Repasky, Lonsdale, MN

2)NSLS 11268 ET, Kristina Repasky, Lonsdale, MN

3)NSLS 11305, Austin Hicks, Stillwater, OK

4)Thistledown 530, Robert Schembs, Colfax, IN

5)McCarthy 2016, Madison Henderson, Perry, OK

6)PD 121, Michael Pope, Greenfield, IN

-Fitted Winter Ewe Lamb: 1)**Reserve Grand Champion, Reserve Grand Champion Fitted & Junior Champion Fitted Ewe:** Klampe 203, Ashley & Kristina Klampe, Jefferson, OR

2)Nichols 201, Olivia Nichols, Harrodsburg, KY

3)Pine Ridge 12050, Thomas Crome, Marshall, IL

4)Mithoefer 2037, Mithoefer Dorsets, Lafayette, IN

5)Riverwood Farms 5804, Riverwood Farms, Powell, OH

6)Verhaeghe KRV 2517, Kaitlyn Verhaeghe, Argos, IN

-Fitted Spring Ewe Lamb: 1)Sid's Dorsets 1211 ET, Sidney DeVries, Freeport, IL

2)Shepherds View 1207, Shepherds View, Bridgeville, DE

3)McDaniel 12-20, McDaniels Ranch, Greenfield, IN

4)Nichols 206, Olivia Nichols, Harrodsburg, KY

5)Shepherds View 1205, Bridgeville, DE

6)Mithoefer 2042, Mithoefer Dorsets, Lafayette, IN

7)Riverwood Farms 5839 ET, Riverwood Farms, Powell, OH

8)Pettersson-Estes 2286, Mona Lisa Pettersson-Estes, Sanger, CA

9)Snyder 12009, Austin Hicks, Stillwater, OK

10)PD 137, Michael Pope, Greenfield, IN

-Slick Shorn Wtr./Spr. Ewe Lamb: 1)Pettersson-Estes 2265, Mona Lisa Pettersson, Sanger, CA

2)Double A Dorsets 12-3, Amber Allen, Byron, OK

3)Riverwood Farms 5803, Riverwood Farms, Powell, OH

4)Ebert 2029, Monica Ebert, St. George, KS

5)Xenikis 263-1192, Tony Xenikis, London, OH

-Pair of Ewe Lambs: 1)Ashley & Kristina Klampe, Jefferson, OR

2)Sidney DeVries, Freeport, IL

3)Riverwood Farms, Powell, OH

4)Shepherds View, Bridgeville, DE

5)Kaitlyn Verhaeghe, Argos

-Best Headed Polled Ewe: Sids Dorsets 1211 ET, Sidney DeVries, Freeport, IL

-Flock: 1)Riverwood Farms, Powell, OH

2)Mithoefer Dorsets, Lafayette, IN

3)Kaitlyn Verhaeghe, Argos, IN

-Premier Exhibitor: Riverwood Farms, Powell, OH

-Downsborough Sire of the Year: "Precision" Saylor Twin Oaks

922, Rick Klampe, Jefferson, OR

SIDWELL SHOW SHEEP

Champion Dorset Mkt Lamb
2012 Colorado State Fair
Sidwell 2030
(Stainless Steel x 4008)
(Right)

Reserve
Champion Dorset Mkt Lamb
2012 Colorado State Fair
Sidwell 2032
(X x Doug)
(Left)



Supreme Champion Ewe Colorado State Fair Open Show
Champion Dorset Ewe Tulsa State Fair Open Show
Sidwell 2072 (Stainless Steel x Max x 4008)



Reserve Dorset Ewe Colorado State Fair Open Show
Reserve Dorset Ewe Tulsa State Fair Open Show
Reserve Jr. Champion Great Plains Regional Dorset Show
Sidwell 2019 (Stainless Steel x Cy x 4008)

This year we will be lambing from late December through early March.
2013 sires include X, Double X (an X x 4008 son), Twisted Steel (a Stainless Steel x Thunderbolt son) and
Chrome (a Stainless Steel x Thunderbolt son).
Call or visit SidwellShowSheep.com for more information on the sheep.

CASEY SIDWELL - GILL, CO - 970-302-9451 - SIDWELLSHOWSHEEP.COM

2012 NATIONAL OPEN HORNED DORSET SHOW

N.A.I.L.E. LOUISVILLE, KENTUCKY



Reserve Senior Champion Ram
Early Fall Ram Lamb - PRC W6119
Jeff McDaniel, Arlington, IN



Reserve Junior Champion Ram
Winter Ram Lamb - PRC W6247
Paul Cassell, Wytheville, VA



Best Headed Horned Dorset Ram
Spring Ram Lamb - PRC W6263
Keegan Padgett, Kirklin, IN

-Yearling Ram: 1)**Grand & Senior Champion Ram:** "Big Shot"
PRC 212 ET, Paul Cassell, Wytheville, VA

-Fall Ram Lamb: 1)**Reserve Senior Champion Ram:** PRC
W6119, Jeff McDaniel, Arlington, IN

2)PRC W6118, Ridge Betts, Felton, DE
3)Patoka Valley 1126, Patoka Valley Sheep, Princeton, IN

-Late Fall Ram Lamb: 1)Cassell W3111, Paul R. Cassell,
Wytheville, VA

2)Richardson 0062, Austin, Logan & Addison Inbody, Bluffton, OH

-Winter Ram Lamb: 1)**Reserve Junior Champion Ram:** PRC
W6247, Paul Cassell, Wytheville, VA

2)ALA F1179, Austin, Logan & Addison Inbody, Bluffton, OH
3)TAC W6274, Monica Ebert, St. George, KS

-Spring Ram Lamb: 1)**Reserve Grand & Junior Champion**
Ram: Gadsby 1203 ET, Timothy Gadsby, Stoneboro, PA

2)Richardson 1221202, Noah & Natalie Richardson, West
Chester, OH

3)PRC 6257, Paul Cassell, Wytheville, VA

4)PRC W6263, Keegan Padgett, Kirklin, IN

-Slick Shorn Ram Lamb: 1)PRC 6262, Paul Cassell, Wytheville, VA

2)Patoka Valley 1207, Patoka Valley Sheep, Princeton, IN

-Pair of Ram Lambs: 1)Paul Cassell, Wytheville, VA

2)Austin, Logan & Addison Inbody, Bluffton, OH

-Best Headed Ram: PRC W6263, Keegan Padgett, Kirklin, IN

-Fitted Yearling Ewe: 1)**Grand & Senior Champion Ewe:** Sink
35P, Keegan Padgett, Kirklin, IN

2)**Reserve Senior Champion Ewe:** PRC PR209 ET, Paul Cas-
sell, Wytheville, VA

3)Cassell W5475, Ridge Betts, Felton, DE

4)MHD 043, Jeff McDaniel, Arlington, IN

5)PRC W5459, Kegan Padgett, Kirklin, IN

6)PRC W6034, Paul Cassell, Wytheville, VA

7)Mrozinski 764, Ridge Betts, Felton, DE

8)MHD 019, Jeff McDaniel, Arlington, IN

-Slick Shorn Yearling Ewe: 1)Kevin Whitmer 185, Bradford, OH

2)Cassell W5431, Paul Cassell, Wytheville, VA

3)Sink 44P, Keegan Padgett, Kirklin, IN

4)PRC W5373, Monica Ebert, St. George, KS

-Pair of Yearling Ewes: 1)Keegan Padgett, Kirklin, IN

2)Paul Cassell, Wytheville, VA

3)Ridge Betts, Felton, DE

4)Jeff McDaniel, Arlington, IN

-Early Fall Ewe Lamb: 1)Richardson 0056, Ridge Betts, Felton, DE

2)Sink 81P, Keegan Padgett, West Chester, OH

3)MHD 102, Jeff McDaniel, Arlington, IN

4)Crill G130, Patoka Valley Sheep, Princeton, IN

5)Houfe Dorsets 1120, Houfe Dorsets, Milton, WI

6)TAC W6129, Monica Ebert, St. George, KS

7)Mrozinski 828, Logan Inbody, Bluffton, OH

-Late Fall Ewe Lamb: 1)**Reserve Grand & Junior Champion**

Ewe: L. Thompson G046, Houfe Dorsets, Milton, WI

2)PRC W6153, Paul Cassell, Wytheville, VA

3)PRC W6130, Ridge Betts, Felton, DE

4)Cassell W6181, Jeff McDaniel, Arlington, IN

5)Sink 42P, Steve & Sheila Sink, Kirklin, IN

-Winter Ewe Lamb: 1)PRC 6245, Paul Cassell, Wytheville, VA

2)PRC W6264, Noah & Natalie Richardson, West Chester, OH

-Spring Ewe Lamb: 1)**Reserve Junior Champion Ewe:** Richard-
son 1221201, Noah & Natalie Richardson, West Chester, OH

2)PRC 3172, Keegan Padgett, Kirklin, IN

3)PRC W6302, Paul Cassell, Wytheville, VA

4)Kevin Whitmer 192, Kevin Whitmer, Bradford, OH

5)RB 65, Ridge Betts, Felton, DE

6)PRC W6283, Mike Torrone, Palmerton, PA



Reserve Senior Champion Ewe
2nd Fitted Yearling Ewe - PRC PR209 ET
Paul Cassell, Wytheville, VA



Reserve Grand & Junior Champion Ewe
Late Fall Ewe Lamb - L. Thompson G046
Houfe Dorsets, Milton, WI



Reserve Junior Champion Ewe
Spring Ewe Lamb - Richardson 1221201
Noah & Natalie Richardson, W. Chester, OH

JENSEN

Polled Dorsets



Best Headed Horned Dorset Ewe
Yearling Ewe - PRC PR209 ET
Paul Cassell, Wytheville, VA

- 7)PRC W6289, Paul Cassell, Wytheville, VA
- 8)Patoka Valley 1212, Patoka Valley Sheep, Princeton, IN
- 9)ALA 1222, Austin, Logan & Addison Inbody, Bluffton, OH
- 10)ALA 1234, Austin, Logan & Addison, Inbody, Bluffton, OH

- Slick Shorn Ewe Lamb:** 1)PRC 6198, Paul Cassell, Wytheville, VA
- 2)PRC W6152, Houfe Dorsets, Milton, WI
- 3)Sink 83P ET, Keegan Padgett, Kirklin, IN
- 4)Cassell W6186, Monica Ebert, St. George, KS

- Pair of Ewe Lambs:** 1)Noah & Natalie Richardson, West Chester, OH
- 2)Houfe Dorsets, Milton, WI
- 3)Paul Cassell, Wytheville, VA
- 4)Ridge Betts, Felton, DE
- 5)Keegan Padgett, Kirklin, IN
- 6)Jeff McDaniel, Arlington, IN
- 7)Austin, Logan & Addison Inbody, OH

- Flock:** 1)Paul Cassell, Wytheville, VA
- 2)Keegan Padgett, Kirklin, IN
- 3)Jeff McDaniel, Arlington, IN
- Best Headed Horned Ewe:** PRC PR209 ET, Paul Cassell, Wytheville, VA
- Premier Exhibitor:** Paul Cassell, Wytheville, VA

2013 NATIONAL POLLED DORSET JUNIOR SHOW PICTURES



Grand Champion & Champion Fitted Ram
Fitted Spring Ram Lamb - PD136
Michael Pope, Greenfield, IN



Res. Grand & Res. Champion Fitted Ram
Fitted Fall Ram Lamb - Spilde 8749
Spilde Kids, Stoughton, WI



Grand Champion Slick Shorn Ram
Fall Ram Lamb - Bel Mar Farm 1649
Kodi & Kamron Paulus, Casstown, OH



"BAZINGA"

Jensen G-051
Sire: "Ironic" Peters 0021
Dam: Bradford Farms 737

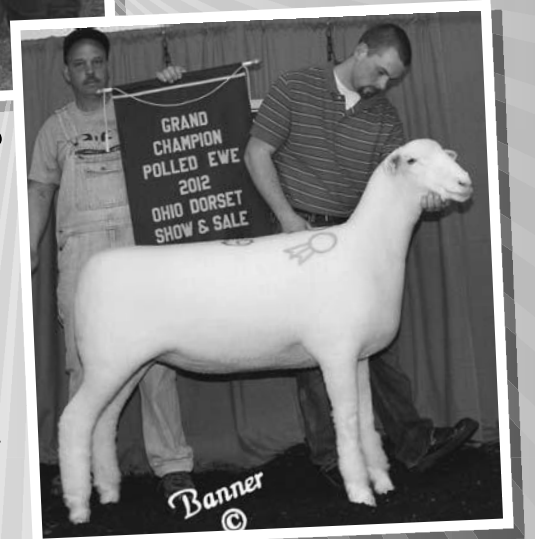
Congratulations to Mithoefer Dorsets on their success with "BAZINGA"! Undeclared Yearling Ewe and Grand Champion at the 2012 N.A.I.L.E., Ohio State Fair, Indiana State Fair, Illinois State Fair, and the Big E. Mithoefer Dorsets purchased "BAZINGA" at the 2011 Ohio Dorset Sale.

"Miss Buckeye"

Trail Run Dorsets 1129
Sire: Bradford/Jensen 990
Dam: Trail Run 0902

Grand Champion Ewe at the 2012 Ohio Dorset Show & Sale. Congratulations to the Beskid Family on their success with Bradford/Jensen Genetics. 1129 was purchased by Triple K Dorsets.

Consigning a strong set of sheep to the 2013 Ohio Dorset Sale!



Mike & Kianna Jensen

P.O. Box 303 • Willits, California 95490

Flock Consultant: Jeremy Bradford • 330/465-0655

2012 NATIONAL JUNIOR POLLED DORSET SHOW

N.A.I.L.E. LOUISVILLE, KENTUCKY



Res. Grand & Res. Champion Fitted Ewe
Fitted Late Fall Lamb - Twin Oaks 1130
Thomas Vandeventer, Camargo, IL



Champion Slick Shorn Ewe
Slick Shorn Yearling Ewe - A. Hicks 1109
Austin Hicks, Stillwater, OK



Reserve Champion Slick Shorn Ewe
Slick Shorn Fall Lamb - Peters 171
Chelsey Peters, Nevada, TX

-Fitted Fall Ram Lamb: 1)**Reserve Grand & Reserve Champion Fitted Ram:** Spilde 8749, Luke, Avery, Brandt, Cade, Claire & Becket Spilde, Stoughton, WI

2)Spilde 8748, Luke, Avery, Brandt, Cade, Claire & Becket Spilde, Stoughton, WI

3)Purple Ribbon Farms 1251, Thomas Vandeventer, Camargo, IL

4)McDaniel 12-12, Thomas Crome, Marshall, IL

5)Millennium Farms 1154F, Kylie Schakel, Oxford, IN

6)Verhaeghe KRV2510, Kaitlyn Verhaeghe, Argos, IN

7)Rocky Top View Farm 1106, Emily Ellison, Newport, TN

-Fitted Winter Ram Lamb: 1)Klampe 202, Ashley & Kristina Klampe, Jefferson, OR

2)Pine Ridge Dorsets 12061 ET, Olivia Waggoner, East Berlin, PA

3)Riverwood Farm 5812, Klarissa Minish, Holts Summit, MO

4)Taylor 12027, Emily Carney, Easton, MD

-Fitted Spring Ram Lamb: 1) **Grand & Champion Fitted Ram:** PD 136, Michael Pope, Greenfield, IN

2)Ram & Ewe Farm 0673, Abigail Rasys, Brimfield, MA

3)MGM 1211, Grace Murphy, Plymouth, IN

4)MGM 1208, Grace Murphy, Plymouth, IN

5)J. Flinchum 840, Klarissa Minish, Holts Summit, MO

6)Kolb Dorsets 1180, Shelby Wright, Henry, IL

-Slick Shorn Fall Ram Lamb: 1)**Champion Slick Shorn Ram:** Bel Mar Farm 1649, Kody & Kamron Paulus, Casstown, OH

-Slick Shorn Wtr./Spr. Ram Lamb: 1)**Reserve Champion Slick Shorn Ram:** Verhaeghe KRV 2555, Kaitlyn Verhaeghe, Argos, IN

2)Double K Showstock 2, Shelby Wright, Henry, IL

3)GT Dorsets 1231, Elliot, Allison & Shelby Smith, Emporia, KS

4)T. Myers 8571, Tyler Myers, Rushsylvania, OH

-Fitted Early Yearling Ewe: 1) **Res. Fitted Senior Champion:** "Bama Girl" Shepherds View 10102, Kaitlyn Verhaeghe, Argos, IN

2)Thornsborough 17, Thomas Vandeventer, Camargo, IL

3)Snyder 11012, Austin Hicks, Stillwater, OK

4)Ram & Ewe Farm 0607F, Kylie Schakel, Oxford, IN

5)Pine Ridge Dorsets 1117 ET, Austin Hicks, Stillwater, OK

6)Riverwood Farm 5654, Klarissa Minish, Holts Summit, MO

7)Nichols 1122, Alexis Moats, Lenoir City, TN

8)Mithoefer Dorsets 1017, Emily Ellison, Newport, TN

9)Freitas/Bianchi 946R, Cassidy Ward, Marthasville, MO

-Fitted Late Yearling Ewe: 1)**Grand Champion, Fitted Champion & Senior Champion Ewe:** Pine Ridge Dorsets 1135 ET, Olivia Waggoner, East Berlin, PA

2)Lauden Acres 740, Johanna DeJoria, Newberg, OR

3)Pine Ridge Dorsets 1195, Olivia Waggoner, East Berlin, PA

4)Lauden Acres 750, Sarah Moore, Jerseyville, IL

5)Riccioni 719, Kara Riccioni, Frenchtown, NJ

6)Nichols 1079, Olivia Nichols, Harrodsburg, KY

7)McComas 0003, Kelsey Sheeley, Hillsboro, OH

8)Freitas/Bianchi 954G, Cassidy Ward, Marthasville, MO

-Fitted Early Fall Ewe Lamb: 1)Spilde 8737, Michael Pope, Greenfield, IN

2)Lauden Acres 753, Sidney DeVries, Freeport, IL

3)Crome 2127, Thomas Crome, Marshall, IL

4)Pine Ridge Dorsets 12014 ET, Christopher MacCauley, Atglen, PA

5)NSLS 11294, Kaitlyn Verhaeghe, Argos, IN

6)Lauden Acres 768, Ethan Hodel, Maroa, IL

7)Klampe 119, Kristina & Ashley Klampe, Jefferson, OR

8)Purple Ribbon Farm 1257, Ty Hodel, Maroa, IL

9)Sids Dorsets 116, Sidney DeVries, Freeport, IL

10)Moore 014, Sarah Moore, Jerseyville, IL

11)McDaniel 1210, Cameron Allison, Hemlock, NY

12)Saylor's Twin Oaks 1121, Emily Ellison, Newport, TN

-Fitted Late Fall Ewe Lamb: 1)**Reserve Grand, Reserve Fitted & Junior Champion Fitted Ewe:** Saylor's Twin Oaks 1130, Thomas Vandeventer, Camargo, IL

2)Crome 2123, Thomas Crome, Marshall, IL

3)PD 123, Michael Pope, Greenfield, IN

4)NSLS 11309, Kaitlyn Verhaeghe, Argos, IN

5)PD 122, Michael Pope, Greenfield, IN

6)Sids Dorsets 1125, Sidney DeVries, Freeport, IL

7)Trotter 0021, Anna Trotter, Marysville, IN

8)Quarter Mile Farm 54511, Ethan Hodel, Maroa, IL

9)Poynter Sheep Farm Y-9, Shelby Wright, Henry, IL

-Fitted Winter Ewe Lamb: 1)Verhaeghe KRV 2517, Kaitlyn Verhaeghe, Argos, IN

2)Pine Ridge Dorsets 12050, Thomas Crome, Marshall, IL

3)Klampe 203, Ashley & Kristina Klampe, Jefferson, OR

4)Pine Ridge Dorsets 12088 ET, Olivia Waggoner, East Berlin, PA

5)Nichols 201, Olivia Nichols, Harrodsburg, KY

6)Minish 115, Klarissa Minish, Holts Summit, MO

-Fitted Spring Ewe Lamb: 1)**Reserve Junior Champion Fitted Ewe:** Sids Dorsets 1211, Sidney DeVries, Freeport, IL

2)PD 137, Michael Pope, Greenfield, IN

3)Moore 019, Sarah Moore, Jerseyville, IL

4)Verhaeghe KRV 2526, Kaitlyn Verhaeghe, Argos, IN

5)Nichols 206, Olivia Nichols, Harrodsburg, KY

6)Pine Ridge Dorsets 12114, Olivia Nichols, East Berlin, PA

7)Quarter Mile Farm 52712, Ethan Hodel, Maroa, IL

8)Snyder 12009, Austin Hicks, Stillwater, OK

10)Ram & Ewe Farm 0682, Abigail Rasys, Brimfield, MA

11)MGM 1209, Blake Kessler, LaPorte, IN

12)Kolb Dorsets 1179, Shelby Wright, Henry, IL

ALWAYS STRIVING TO BREED THE BEST!



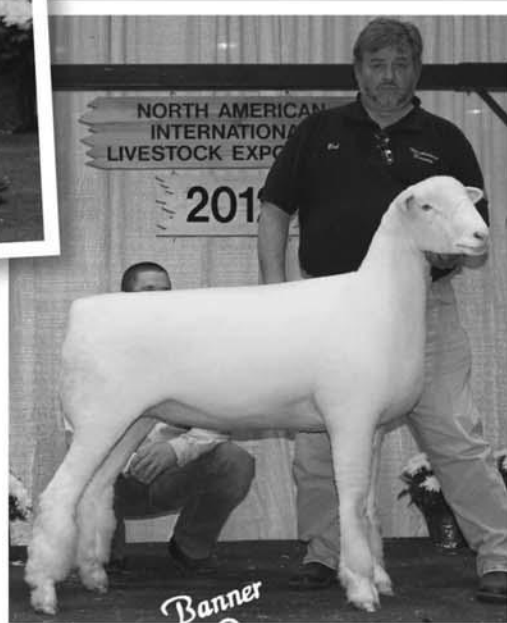
Presenting... "GREAT WHITE"

Poynter Sheep Farm M-27 — Grand Champion Open Class Ram at the 2012 Indiana State Fair. He's sired by "Stimulus" Twin Oaks 801, the \$7,000 National Reserve Grand Champion Ram.

This big, sound buck was bred by Poynter Sheep Farm, and is owned jointly by the Poynters and Bob Schembs of Thistledown Dorsets. Watch for his lambs from both flocks at the 2013 sales!

**Watch for
entries from
both flocks
at the
2013 sales.**

"Thistledown 531" — 2nd Fitted Late Fall Ewe Lamb at the 2012 National Polled Dorset Show at the North American. Her dam was the 1st Fitted Fall Ewe Lamb at the 2010 Indiana State Fair. This popular girl will be the lead yearling ewe for the 2013 show season in the Thistledown show flock.



Poynter
SHEEP FARM

Jeff & Jan Poynter ~ Jared, Kara & Westin Poynter

12709 E. 750th Road • Paris, IL 61944

217/466-4880 • jpoynter@tigerpaw.com • www.poyntersheepfarm.com



Thistledown
Polled Dorsets

Robert A. Schembs

8998 N 1050 W • Colfax, IN 46035

317/713-6877 • Email: schembslaw@yahoo.com

2012 NATIONAL JUNIOR DORSET SHOW, CONT. N.A.I.L.E. LOUISVILLE, KENTUCKY

-Slick Shorn Yearling Ewe: 1)Champion Slick Shorn Ewe:

- A. Hicks 1109, Austin Hicks, Stillwater, OK
2)T. Myers 8422, Tyler Myers, Rushsylvania, OH
3)Kylie Schakel 1051, Kylie Schakel, Oxford, IN
4)Triple K Dorsets 0279, Austin Hicks, Stillwater, OK
5)Riverwood Farm 5631, Jenna Davis, Chillicothe, OH
6)Verhaeghe KRV 1510, Kaitlyn Verhaeghe, Argos, IN
7)Bel Mar Farm 1637, Kodi Paulus, Casstown, OH
8)GT Dorsets 1107, Elliot, Allison & Shelby Smith, Emporia, KS
9)Bel Mar Farm 1638, Colin Hawes, Piqua, OH
10)TMJ 1185, Jansyn Van Horn, Garfield, KS

-Slick Shorn Fall Ewe Lamb: 1)Res. Champion Slick Shorn

- Ewe: Peters Polled Dorsets 171, Chelsey Peters, Nevada, TX
2)T & T Dorsets 1130, Shelby Wright, Henry, IL
3)PD 121, Michael Pope, Greenfield, IN
4)NSLS 11317, Austin Hicks, Stillwater, OK
5)Verhaeghe KRV 2501, Kaitlyn Verhaeghe, Argos, IN
6)Woodland 182, Chelsey Peters, Nevada, TX
7)NSLS 11305, Austin Hicks, Stillwater, OK
8)T. Myers 8531, Tyler Myers, Rushsylvania, OH
9)Taylor 1166, Alexis Moats, Lenoir City, TN
-Slick Shorn Wtr./Spr. Ewe Lamb: 1)SSL 1204, Brooke Kirchhofer, Berne, IN
2)GT Dorsets 1232, Elliot, Allison & Shelby Smith, Emporia, KS
3)Balfanz 2114, Ainsley Balfanz, Waterford, WI

- 4)Verhaeghe KRV 2518, Kaitlyn Verhaeghe, Argos, IN
5)Riccioni 743, Kara Riccioni, Frenchtown, NJ
6)Ebert 2029, Monica Ebert, St. George, KS
7)GT Dorsets 1254, Elliot, Allison & Shelby Smith, Emporia, KS
8)Surber 203, Courtney Burton, Frankfort, IN
9)Smith 6, Elliot, Allison & Shelby Smith, Emporia, KS
10)T. Myers 8629, Tyler Myers, Rushsylvania, OH
11)Kolb Dorsets 1181, Shelby Wright, Henry, IL
-State Flock: 1)Illinois: Sidney DeVries, Sarah Moore, Thomas Crome, Thomas Vandeventer
2)Kansas: Shelby Smith, Allison Smith, Elliot Smith, Jansyn Van Horn



Grand Champion Horned Dorset Ram
Spring Ram Lamb - PRC W6263
Keegan Padgett, Kirklin, IN



Reserve Grand Champion Horned Ram
Fall Ram Lamb - Richardson 0062
Austin, Logan & Addison Inbody, Bluffton, OH

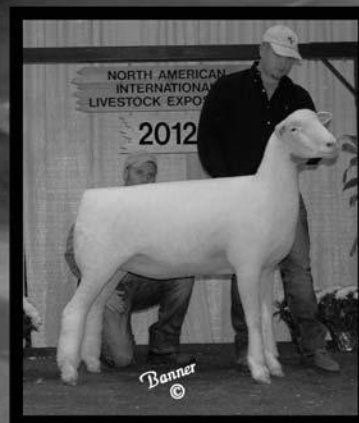
Another Year of Champions

Supreme
Champion Ram
2012 IL State
Fair Jr. Show,
Reserve
Champion Ram
North Central
Regional Show



As Sarah's Junior show career
is coming to an end look for an
elite offering of lambs at up-
coming Shows and Sales.

Special Thank You to the Dick Reece
Family, Aaron Crome Family, Tucker
Beckmier Family, and everyone else who
has helped with my sheep this year!



Champion Dorset
Ewe 2012 IL State
Fair Jr. Show,
Reserve Sr.
Division Fitted Ewe
2012 NAILE

MOORE

25797 Moore Lane Jerseyville, IL 62052

DORSETS

Sarah: 618.535.9421 Ron: 618.535.3235

CLAIR CLUB LAMBS

CLAIRCLUBLAMBS.COM

Visit our site for upcoming sale info and
for more champions & sires!

Taking dorsets to the next level!

2013 Sires



POWER PLAY

\$10,000 Record Selling Dorset Buck Lamb
2012 Sedalia - Raised by Daniels



HUSTLER
Casino x Kracker

Congratulations to our champions from across the nation!



RESERVE DORSET EWE
OKLAHOMA YOUTH EXPO



SUPREME BREEDING EWE
COLORADO STATE FAIR



RESERVE DORSET
MARKET LAMB
INDIANA STATE FAIR

BRAD & LORI ANDERSON FAMILY
AULT, CO | 712/541/3608
ANDERSONFARMSLAMB@HOTMAIL.COM

2012 NATIONAL JUNIOR HORNED DORSET SHOW N.A.I.L.E. LOUISVILLE, KENTUCKY

-Fall Ram Lamb: 1) Reserve Grand Champion Ram:

Richardson 0062, Austin, Logan & Addison Inbody, Bluffton, OH
2) Oberholtzer 1104, Jade Zimmerman, East Earl, PA

-Winter Ram Lamb: 1) TAC W6274, Monica Ebert, St. George, KS

-Spring Ram Lamb: 1) Grand Champion Ram: PRC W6263,
Keegan Padgett, Kirklin, IN

2) Cassell R1201, Britton Francis, Paris, MO

3) Richardson 1221202, Noah & Natalie Richardson, W. Chester, OH

-Yearling Ewe: 1) Grand & Senior Champion Ewe: Sink 35P,
Keegan Padgett, Kirklin, IN

2) Reserve Grand & Reserve Senior Champion Ewe: PRC
W5459, Keegan Padgett, Kirklin, IN



Res. Grand & Res. Sr. Champ. Horned Ewe
2nd Fitted Yearling Ewe - PRC W5459
Keegan Padgett, Kirklin, IN

3) Oberholtzer 1010,
Jade Zimmerman,
East Earl, PA

4) Oberholtzer 1101,
Jade Zimmerman,
East Earl, PA

5) Cassell W5478,
Britton Francis, Paris,
MO

-Slick Shorn Yearling
Ewe: 1) Sink 44P,
Keegan Padgett,
Kirklin, IN

2) PRC W5373,
Monica Ebert, St.
George, KS

-Early Fall Ewe Lamb: 1) Sink 81P, Keegan Padgett, Kirklin, IN

2) PRC W6227, Britton Francis, Paris, MO

3) Mrozinski 828, Logan Inbody, Bluffton, OH

4) TAC W6129, Monica Ebert, St. George, KS

-Late Fall Ewe Lamb: 1) Junior Champion Ewe: PRC W6240,
Britton Francis, Paris, MO

-Winter Ewe Lamb: 1) PRC W6264, Noah & Natalie Richardson,
West Chester, OH

-Spring Ewe Lamb: 1) Reserve Junior Champion Ewe: PRC

3172, Keegan Padgett, Kirklin, IN

2) Richardson 1221201, Noah & Natalie Richardson, W. Chester, OH

3) Spring Hill 0834, Devin Helmick, Terre Haute, IN

4) Oberholtzer 1202,
Jade Zimmerman,
East Earl, PA

-Slick Shorn Ewe

Lamb: 1) Sink 8P ET,

Keegan Padgett,

Kirklin, IN

2) Cassell W6186,

Monica Ebert, St.

George, KS

3) Mary Ann Cassell

W6165, Caleb

Wamsley, Rensselaer,

IN

4) Oberholtzer 1205,

Jade Zimmerman,

East Earl, PA



Junior Champion Horned Ewe
Late Fall Ewe Lamb - PRC W6240
Britton Francis, Paris, MO

GT

SHEEP CO.

ONLINE DORSET & SOUTHDOWN SALE

Selling Wethers & Ewe Lambs

March 6 & 7, 2013

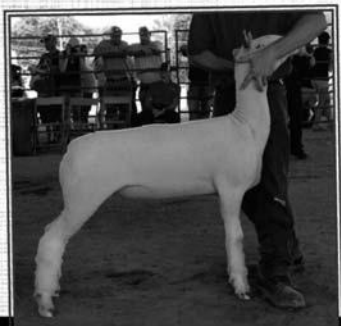
HELD AT WLIVESTOCK.COM

Jerry Gross • Kennard, NE

402-720-9198 cell

402-427-7224

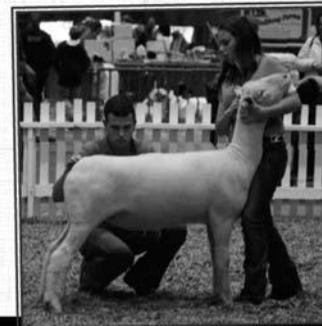
gtsheep.com



Champion Dorset Market Lamb
2012 All American Jr. Show



"Stanton"
GT 1253



Champion Dorset Ewe - KJLS
Res. Champion - KS State Fair



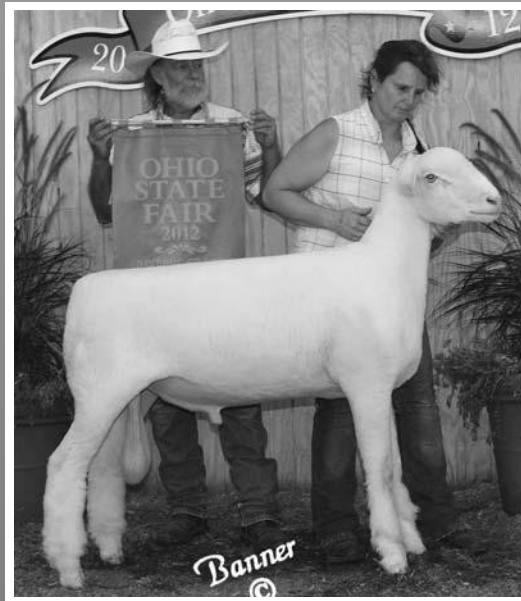
MITHOEFER DORSETS

"Best Bet" Sired Sheep Will Again Head Our Sale Entries!

Our Consignments Will Feature Lambs Sired by "Best Bet"

"Best Bet" Twin Oaks 622 RR, is a "High Definition" son and was 1st Early Fall Ram Lamb at the 2007 Ohio Dorset Sale. His offspring the past few years have been very well received at both the shows and sales. Pictured are three more fine examples!

*Consigning to the
Ohio Dorset Show & Sale
Eaton, OH • March 15-16*

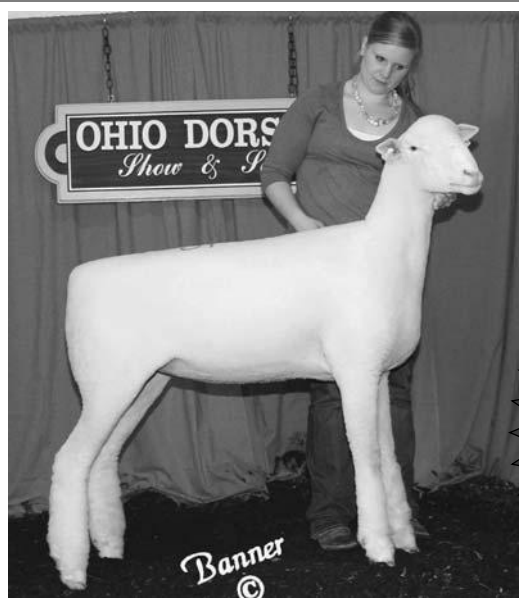


"Best Bet" Sires Sheep with Bone, Substance & Style!

"Burn Notice" (left) exemplifies the type of Dorset we strive to produce. He was Champion at the Big E and Reserve Champion at Indiana, Ohio and Kentucky. We think so highly of his sire, "Best Bet", that we are retaining "Burn Notice" as a stud!

*Consigning to the
Midwest Stud Ram Sale
Sedalia, MO • June 25-28*

Sired by "Best Bet"...



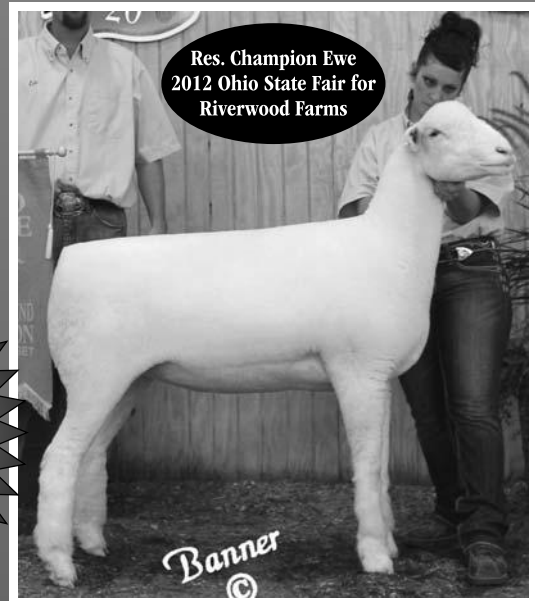
Mithoefer 1057

Purchased by Caleb Wright, PA, at the 2012 Ohio Dorset Sale for \$1,750.

Mithoefer 2028 (RR) "Burn Notice"

**We Encourage
Your Visits And
Purchases
At The Farm!**

**We'll also have
lambs at Ohio by
"Transformer" our
new Twin Oaks stud
buck we bought at
the 2012 Ohio
Dorset Sale.**



Mithoefer 1077

Sold to Riverwood Farms, OH, at the 2012 Ohio Dorset Sale for \$2,500.

*Special thanks to Kevin, Sara and Katherine Kuykendall for another great job with our show flock.
Watch for them with our show and sale sheep again this year.*

V.S.F.C.P.

Brent Mithoefer 765/564-3228

9800 E 800 N • Lafayette, IN 47905 • E-mail: brent.mithoefer@gmail.com • Website: www.mithoefer.com





THE
CONTINENTAL
DORSET CLUB, INC

Debra Hopkins, Secretary
P.O. Box 506
North Scituate, RI 02857

NO RETURN SERVICE REQUESTED

The First...The Biggest...The BEST!

53rd Annual



DORSET
show & sale

Classes for Slick Shorn Polled & Horned Dorsets

Selling...
POLLED
&
HORNED
DORSETS

March 15 & 16

Preble County Fairgrounds

EATON, OHIO

DVAuction Broadcasting
Real-time Auctions

View the sale and bid live online via DV Auction! Register at... dvauction.com

SAYLOR

Sale Management &
Auctioneer Service

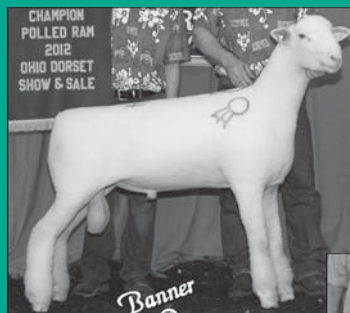
GARY SAYLOR

19570 County Road 75 • Belle Center, OH 43310
937-464-7214 • Email: gsaylor@watchtv.net

View the Sale
Catalog Online:
www.saylorauction.com

Sponsored by the...

OHIO
DORSET
ASSOCIATION



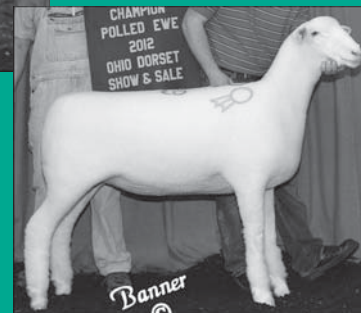
*Pictured are the 2012
Champions...*

Left:
Grand Champion Polled Ram
An Ohio entry sold to a Minnesota buyer.

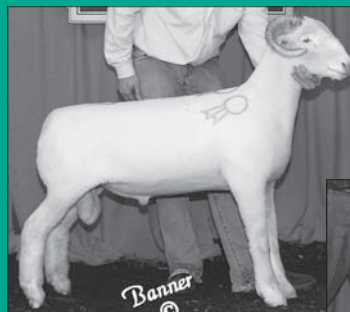
SHOW
FRIDAY — 8:00 a.m. EST

Judge:
Steve Reid — Houstonia, MO

SHOW ORDER:
Polled Rams, Horned Rams,
Horned Ewes, Polled Ewes



Above:
Grand Champion Polled Ewe
A South Dakota buyer got this Ohio entry.

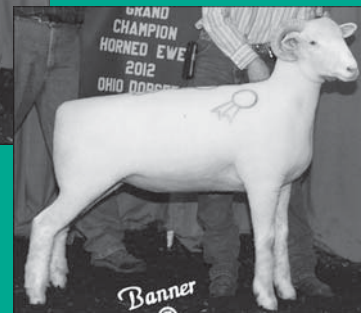


Left:
Grand Champion Horned Ram
An Indiana bred ram that sold to Maine.

SALE
SATURDAY — 9:00 a.m. EST

Auctioneers:
Gary Saylor & Danny Westlake

SALE ORDER:
Polled Rams, Horned Rams,
Horned Ewes, Polled Ewes



Above:
Grand Champion Horned Ewe
This Ohio entry sold to a Delaware buyer.