

The DORSET Connection

A Publication Of The Continental Dorset Club

Volume 13 Issue 2

Spring/Summer 2011

2010 DORSET BREEDER EXCELLENCE WINNER SHADY HILLS FARM, Ltd.

The 2010 Polled Dorset Breeder Excellence Winner is Shady Hills Farms, Ltd. of Newburg, Ohio, owned and operated by Benjamin Calkins. The Dorset Breeder Excellence program was established in 2008 by the CDC to recognize Dorset breeders who have excelled in their Dorset breeding programs by producing the Dorset product that meets their marketing needs, and by providing promotion and education of the Dorset breed in the purebred sheep industry.

Ben Calkins started breeding Polled Dorset Sheep in 1964 when he was given a Polled Dorset ewe by his parents. She was bred by Milton D. Cole, of South Wales, New York. That ewe, "Susan," was the start of Ben Calkins' life long love affair with Polled Dorset Sheep. Today, Ben Calkins concentrates on producing productive, predictable and profitable Polled Dorset sheep at Shady Hill Farms, Ltd. of Newbury, Ohio.

Over the years, Ben has been involved in almost every aspect of the sheep industry. His Polled Dorset flock produced the Co-National Champion Futurity Ewe several years ago, and, under the guidance of Craig and Kendra Fleck, produced sheep that won 7 classes at the NAILE that same

year including Junior Champion Ram with "Rolex."

A lifetime of sheep farming is a lifetime of self discovery, and Ben has discovered he needs to take a very hands on approach to sheep farming, and he needs to produce productive, predictable and profitable Polled Dorsets, and not just show ring winners.

Today, Shady Hill Farms, Ltd. produces both frame type Polled Dorsets and wether type Polled Dorsets, and insists upon productivity, predictability and profitability in all of his sheep.

Ben acquired top sheep from many of the top breeders in the United States, including Cole, Lauren F. Allen, Warren Brannon, Cornell University, Wade Brothers, Van Bair Farm, Penn State University, Riverwood Farms, Martin Bros., Rader's White Oak Dorsets, Haven Point Dorsets and Bradford Farms, and then closed the flock and sorted and culled heavily and continues to do so today.

Ben feels fortunate, today, to have access to what he believes are the very best genetics available in both types of Polled Dorsets. "Ironic", the Peters Polled Dorset ram owned with Jeremy Bradford and Reserve Grand Champion Ram at the 2008 Midwest Stud Ram Sale, is the featured stud in the frame flock, backed up by Haven Point's "RRebound" and a home-bred son of "Cash" that is the most massive ram



Shady Hill Farms, Ltd. has ever owned.

The wether type flock, half of his total flock, features the Martin 0200 Prime Time ram and his double bred grandson, Vance, co-owned with Chad Heisdorffer.

Ben has, along the way, developed both a meat business, the Great American Lamb Company, and an heirloom quality 100% virgin woolen blanket business that is now also part of Great American Lamb Company. Both of Ben's Dorset products are highlighted and can be viewed at the website: GreatAmericanLambCompany.com

Ben feels blessed to have grown up breeding Polled Dorsets and to have given his four children the same opportunity. Ben appreciates his many sheep industry friends. Ben would probably not be involved in producing Polled Dorsets today but for the many friends he has made in the industry.

In recent years, Shady Hills Farm has retained their best lambs each year and has sold the lambs they did not retain primarily through Great American Lamb Company. By Fall 2011, however, Ben intends to once again start sharing the Shady Hill Farms, Ltd. gene pool, primarily through private treaty sales. Visit Ben's farm web site at: ShadyHillFarms.com. Congratulations, Ben!



Pine Ridge Dorsets

Polled Dorsets & Southdowns of Distinctive Quality

We Kept Our Word...We Had A Great OHIO DORSET SALE!



"Sampson"
Pine Ridge 0089 RR ET

2011 GRAND CHAMPION DORSET RAM OHIO DORSET SALE

Sire: "Primo" · Dam: Mithoefer
He was also Champion Ram at the
2011 Pennsylvania Farm Show.

He sold to Reynolds Stock Farm, OR;
Johanna DeJoria, OR; Kristina Repasky,
MN; and Spilde Brothers, WI for \$8,000.

*Thanks to Craig Fleck
for his great fitting help!*

*We had high selling ram
at Ohio the last 2 years with
"Primo" sons!*



Pine Ridge 0105 OR

6th Spring Yearling Ram
He is a son of "Corazon" & sold to Jason Bros., OH.



3rd Fall Yearling Ewe, Class I
A full flush sister to our Champion Ram.
She sold to Justin Nelson, CJN Dorsets, IL.



7th Early Fall Ewe Lamb
sold to Ethan Hodel, IL.

Pine Ridge Dorsets & Southdowns
Olivia Waggoner

49 Pine Ridge Road
East Berlin, PA 17316
717/308-1810
bwaggoner@wagcon.net



Thanks to all
our many
2010 buyers!

Benny
Naranjo,
Shepherd

Flock Consultant
Dick Kuzemchak

289 South Main Street
Pleasant Gap, PA 16823
Home: 814/359-3048
Cell: 814/280-2817

TABLE OF CONTENTS

Cover:
 2010 Dorset Breeder Excellence Winner: Shady Hills Farm, Ltd.....1

Table of Contents, Advertisers & CDC Directors.....3

Dorset Calendar & Promotional Items.....4

Feature Articles

Ohio Dorsets Sale Sets The Pace For 2011.....5

Ohio Dorset Sale Picture Collage.....7

President's Letter.....6

Advertising Rates.....6

Commercial Dorset Connection

Selecting On More Than Just Good Looks.....8

Benefits of the CDC Dorset Excellence Program.....9

Announcements:

2011 National Dorset Sale to be Held in Sedalia at Midwest Sale.....10

North Central & Eastern Director Election Results.....10

Announcing Summer/Fall CDC Office Closings.....10

Wether Registrations Now Available.....10

Youth News:

2011 All-American Junior Show Heading East To Delaware.....14

2011 Regional Junior Show Sites.....15

2011 Scholarship Application Available On-Line.....15-16

Regional Junior Show Eligibility Requirements.....16

2011 Dorset Ewe Futurity Update.....16

Letter From NJDA President.....16

Spring Dorset Sales Results

Ohio Dorset Sale.....17-21

Illinois Dorset Sale.....21-22

NEWS WORTHY ITEMS WANTED

If you have any Dorset related news items of interest please send them to the Continental Dorset Club Office. We need your important input to keep this newsletter up to the caliber that it has become and hopefully will remain to be.

ADVERTISERS

Pine Ridge Farm.....2

Royal S Graphics.....3

Advertising Rates.....9

Superior Farms.....7

Ram & Ewe Farm.....11

Twin Oaks Dorsets.....12-13

Woodland Dorsets.....15

Lauden Acres.....17


Huntrods Dorsets.....19

Grimme Horned Dorsets.....21

Pope Dorsets.....22

Sanford Dorsets.....23

Midwest Stud Ram Sale.....29



ROYAL~S
Graphic Design Services

DALE L. SMITH
 Owner/Graphic Designer
 royal-s@earthlink.net

Specializing in the Livestock Industry!

17917 Brim Road
 Bowling Green, OH 43402
 ph/fx 419.352.2332

CONTINENTAL CLUB BOARD OF DIRECTORS 2010-2011

President - Mike Galleher
Great Lakes Director
 6000 CR 100
 Mt. Gilead, OH 43338
 Phone: (419)946-4582

Vice President - Melanie Barkley
Eastern Director
 9027 Hyndman Rd.
 Manns Choice, PA 15550
 Phone: (814)6235756

Western Director
Johnnie Johnson
 25265 Carlsbad Ave.
 Davis, CA 95616
 Phone: (530)979-0028

Great Plains Director
Casey Sidwell
 31306 WCR 57
 Gill, CO 80624
 Phone: (970)302-9451

New England Director
Alan "Hoop" Peterson
 41 Bell Rd.
 Leyden, MA 01337
 Phone: (413)624-5562

North Central Director
Larry Hunter
 135 E. Broadway
 Roseville, IL 61473
 Phone: (309)426-2465

Executive Secretary/Treas.
Debra Hopkins
 P.O. Box 506
 N. Scituate, RI 02857-0506
 Phone: (401)647-4676
 Fax: (401)647-4679
 E-mail: cdcdorset@cox.net
 www.dorsets.homestead.com

This publication is produced three times annually by the:
Continental Dorset Club, Inc.
North Scituate, RI

DORSET CALENDAR

- June 2-4, 2011:** Nugget All-American Sale, John Ascuaga Casino, Sparks, NV. Contact: Banner Sale Management Service (309)785-5058 or visit website: www.bannersheepmagazine.com
- June 3-4, 2011:** West Virginia Sheep Sale, Tri-County Fairgrounds, Petersburg, WV. Contact: www.sheepwv.org
- June 11, 2011:** Northwest Sheep Show & Sale, Kootenai County Fairgrounds, Couer d' Alene, ID. Contact: Kerry Clift (509)968-3451
- June 17-18, 2011:** Keystone Classic Junior Show, Penn State University Livestock Arena, State College, PA. Contact: Stacy Taylor stctylr@aol.com
- June 20-25, 2011:** National Dorset Sale being held in conjunction with the Midwest Stud Ram Sale, Missouri State Fairgrounds, Sedalia, MO. Dorsets show on Wednesday, June 22 and sell on Friday, June 24. Contact: Sheep Breeder Sale Management Service (573)442-8257
- June 23, 2011:** Superior Farms Complete Dispersal Sale, 10:00 AM, Johnson County Fairgrounds, 30 miles east of Sedalia, MO
- June 23, 2011:** Annual CDC Board of Directors Meeting, 4:00 PM, Best Western Motel, Sedalia, MO
- June 24, 2011:** Annual CDC Membership Meeting, 7:30 AM, Youth Cafeteria, Missouri State Fairgrounds, Sedalia, MO
- July 1-3, 2011:** All-American Junior Sheep Show, Delaware State Fairgrounds, Harrington, DE. Contact CDC Office (401)647-4676, email: cdcdorset@cox.net
- July 8-9, 2011: SPECIAL DATE FOR 2011:** New England Sale, BIG E Fairgrounds, West Springfield, MA. For entry information contact: Becky Peterson (413)624-5562 or visit website: www.nesheep.org
- July 8-10, 2011: SPECIAL DATE FOR 2011:** New England Regional Junior Dorset Show, Northeast Youth Sheep Show, BIG E Fairgrounds, West Springfield, MA Featuring classes for both Polled & Horned Dorsets. Contact: Polled: Pat Poitras (413)283-9852, Horned: Kelly Wright (603)835-2829 or visit website: www.nesheep.org
- July 13-17, 2011:** Western Regional Junior Dorset Show, California State Fair, Sacramento, CA. Contact: www.bigfun.com
- July 15-16, 2011:** Crossroads of the West Sale, Deseret Peak Complex, Tooele, UT. Contact: Banner Sale Management Service (309)785-5058 or visit website: www.bannersheepmagazine.com
- August 15, 2011: ADVERTISING & INFORMATION DEADLINE** for the Fall 2011 Issue of "The Dorset Connection". Contact: CDC Office (401)647-4676, e-mail: cdcdorset@cox.net
- August 21, 2011:** North Central Regional Junior Dorset Show, Illinois State Fair, Springfield, IL. Contact: Larry Hunter (309)337-0380, email: lw-hunter@wiu.edu
- August 28, 2011:** Great Lakes Regional Junior Dorset Show, Kentucky State Fair, Louisville, KY. For entry information contact: www.kystatefair.org
- September 16-21, 2011:** Eastern States Exposition Meat Week Sheep Show with Polled & Horned Dorset Shows, West Springfield, MA. Contact: www.bige.com
- October 2, 2011:** Great Plains Junior Regional Dorset Show, Tulsa State Fairgrounds, Tulsa, OK. Contact: CDC Great Plains Director Casey Sidwell (970)302-9451.
- October 9, 2011:** Eastern Junior Regional Dorset Show, Keystone International Livestock Expo., PA Farm Show Complex, Harrisburg, PA. Contact: KILE, website: www.keystoneinternational.state.pa.us
- October 14-15, 2011:** New York Bred Ewe Sale, Dutchess County Fairgrounds, Rhinebeck, NY. Banner Sale Management Service (309)785-5058 or visit website: www.bannersheepmagazine.com
- October 15-16, 2011:** Delaware Junior Livestock Exposition, Delaware State Fairgrounds, Harrington, DE. Contact: Delaware Livestock Expo., website: www.delawarelivestockexpo.com
- November 11-18, 2011:** National Dorset Shows, North American International Livestock Exposition, Louisville, KY. Open Dorset Shows will be Tuesday, Nov. 15th starting at 8:00 AM with Polled Dorsets showing first followed by the Horned Dorsets. Contact for entry information N.A.I.L.E (502)595-3166 or web site: www.kyfairexpo.org

DORSET PROMOTIONAL ITEMS AVAILABLE

- Dorset Baseball Caps:** Cotton twill available with either a embroidered Polled Ram Head or Horned Ram Head. Horned hat colors: Maroon with khaki bill or Forest Green with khaki bill. Polled hat colors: Sage Green or Chocolate Brown. **Cost is \$15.00 which includes shipping & handling.**
- History Book of The Continental Dorset Club & The Dorset Sheep:** This book is 186 pages containing over 300 photos of Dorsets and those who have led the breed. **Cost is \$15.00 includes shipping & handling.**
- Registration Paper Three Ring Binder:** An 11" x 8 1/2" green vinyl covered 1" wide three ring binder with 10 sheet separators to get you started! CDC logo on front cover. Holds up to 100 sheets. **Cost is \$10.00 includes S & H.**
- Ram Head Decals:** Polled or Horned ram head available in two sizes. Large 12" diameter and small 6" diameter. **Cost is \$6.00 for the large decal and \$4.00 for the small decal.**
- Magnetic Bumper Sticker** featuring the CDC Logo and the phrase: "The Breed for all Seasons....The Breed for all Reasons". **Cost is \$2.00 each.**
- Plastic Travel Bag for Carry-On Liquid Items:** Zippered 8" X 8" Clear Plastic Bag with CDC Logo for air travel carry-on liquid items. **Cost is \$3.00 which includes shipping & handling.**

SEND YOUR PAYMENT TO: CDC, P.O. Box 506, N.Scituate, RI 02857

FEATURE ARTICLES

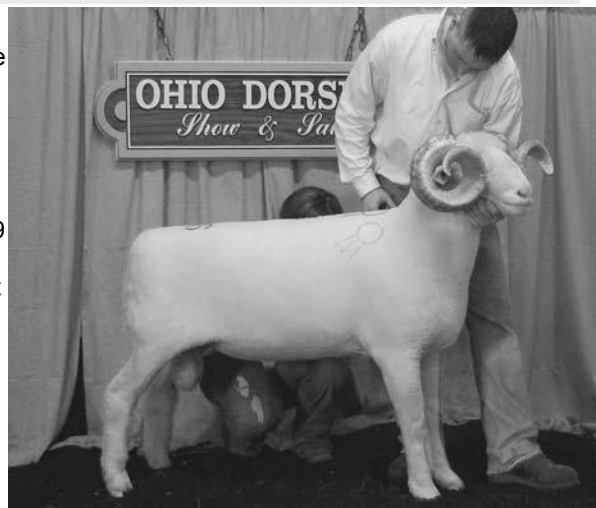
OHIO DORSET SALE SETS THE PACE FOR 2011



Grand Champion Polled Ram - Fall Yearling Ram
Olivia Waggoner, East Berlin, PA
Sold to Reynolds Stock Farm, OR; Johanna DeJoria, OR;
Spilde Brothers, WI & Kristina Repasky, MN

Over the years the Ohio Dorset Sale has become known to set the pace for the rest of the purebred sheep sales for the sale season and the 2011 version has sure done its job! The 51st Ohio Dorset Sale held March 18-19 in Eaton, Ohio set a record Polled Dorset sale average at \$1195.39 and the Horned Dorsets weren't far off their record at \$641.86. There was some early concern with the lower numbers entered but the quality was exceptional and the buyers responded by offering high prices farther down in the classes.

The Polled Dorset Sale featured 168 head sold



Grand Champion Horned Ram - Fall Yearling Ram
John Mrozinski, San Pierre, IN
Sold to Joe Crill & Family, Rochester, IN

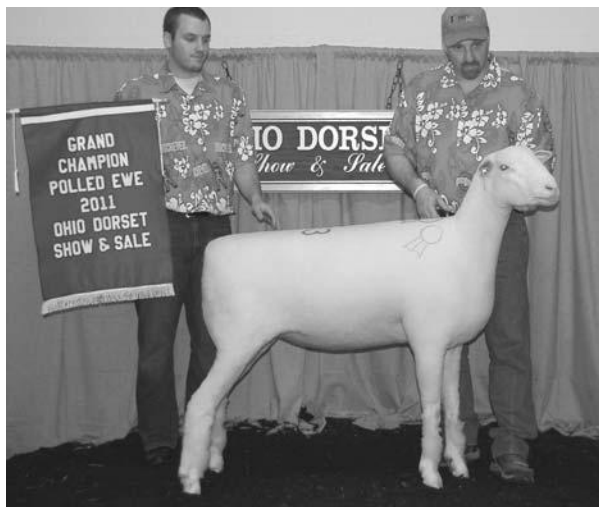
grossing \$200,850.00. The Early Fall Ewe Lamb class had the high selling class average at \$1,340 as half of the class sold for over \$1000. The yearling ewes also sold very well as both the fall and spring born classes averaged well over \$1000 also. The strength of the sale was definitely in the female end though the high price of the sale was produced on the Champion Polled Dorset Ram from Olivia Waggoner, East Berlin, PA. He sold for \$8000 to a partnership of breeders. The complete sales results appear on pages 18-21 of this newsletter.

The Horned Dorset Sale was another strong one as 43 head grossed \$27,600.00 and the high selling sheep of the sale was a flashy late fall ewe lamb that sold from Squires Horned Dorsets to Christina Shotts, Quincy, OH for \$2800. This is just a couple hundred dollars shy of the breed record set a couple of years ago. The high selling ram of the sale was the Reserve Champion Late Fall Ram Lamb from Cassell's that sold to D. Lance Carter in California for \$1500. The Horned Dorset breeders have enjoyed a resurgence in popularity of their breed and have responded by offering a high set of quality of individuals for the sale.

Congratulations to all the consignors and buyers at the sale for making it so successful, and to the Townsend Best Consignor Award recipients. Two established flocks were winners of the awards as Cassell Horned Dorsets, Wytheville, VA and Spilde Brothers-Kent & Dan, Stoughton, WI were presented with the special plaques.

The Ohio Dorset Association is the host of the Ohio Dorset Sale and has done an exceptional job over the years and are strong supporters of the Dorset breed and its breeders. Several presentations were made during the sale. Retiring Ohio Dorset Queen Kayla Gerfen crowned the new 2011 Ohio Dorset Queen Kelsey Saylor, Belle Center, OH. Pat Myers presented two college scholarships to Jenna Davis-Bentley, Chillicothe, OH and Cody Wood, Belle Center, Ohio. The Ohio Junior Dorset Association also presents an award to a breeder in Ohio who shows outstanding support of the junior association and the Dorset breed. Tyler Myers presented the award to Mike Galleher, Mount Gilead, OH, a horned dorset breeder and current President of the Continental Dorset Club. Congratulations to all award recipients.

It was an great week-end in Ohio for the Dorset breed and even the weather cooperated with some nice, warm spring sunshine. I can not finish off this article about Ohio without giving a shout out to the UConn Huskies for winning the NCAA Men's Basketball Championship! As many of you know when we attend the Ohio Sale the basketball tourney is almost as hot a topic as the sale itself, and when my alum can come through and win it, I need to recognize it. UConn played a strong part of the history of the Dorset breed back in the 70's and 80's, so somehow it just seems fitting.



Grand Champion Polled Ewe - Fall Yearling Ewe
Twin Oaks Dorsets, Belle Center, OH
Sold to Johanna, Sonny & Katie May DeJoria, OR



Grand Champion Horned Ewe - Fall Yearling Ewe
Cassell Horned Dorsets, Wytheville, VA
Sold to Christina Shotts, Quincy, OH



LETTER FROM CDC PRESIDENT MIKE GALLEHER

Greetings from warm and sunny Ohio. Finally! After a snowy, cold winter, it is good to see the pasture finally beginning to green-up.

What a great time to be in the sheep business. At the auction barn last week, lambs brought \$2.40 a pound. My late grandfather, who got me started in the Dorset business over fifty years ago, would not believe that I recently sold an eleven-year-old cull ewe for over \$100. Even with \$7.00 corn and \$4.00 gas, the sheep business is booming.

The Ohio Dorset was no exception. Although the number of sheep sold was down this year, the Polled Dorset set a new sale average and the Horned average was higher than last year. The ewe quality was exceptional. I also had the opportunity to attend the Illinois Dorset Sale in early April. Although I don't have the final numbers, I thought the quality was good and prices also held out top to bottom. I was impressed with the facilities at the new location for the sale in Bloomington.

I hope to see you at the National Show and Sale at the Midwest Stud Ram Sale in Sedalia, MO in June. Although I won't be consigning sheep this year, I am looking forward to the hot weather, a good cat-fish dinner at Le Maires, watching the shows, and shooting the breeze with other breeders.

The board meeting should be interesting as we welcome two members and work on the financial challenges facing the CDC. We invite your opinions as to how to best utilize the resources of the organization. Join us for the CDC annual meeting Friday morning following breakfast provided by the Missouri Dorset breeders.

Mike Galleher, CDC President

<p>The DORSET <i>Connection</i></p>	<p>ADVERTISING RATES</p>	<p>Ad Dimensions & Base Prices</p>	
<p>Published three times per year by the Continental Dorset Club, Inc.</p>		<p>2 Page Ad 16" x 9-7/8" \$460</p>	
<p>Ad Deadlines</p>		<p>1 Page Ad 7-1/2" x 9-7/8" \$290</p>	
<p>Spring/Summer Issue: Ad copy and materials due April 1st (May 15th mailing date) Fall Issue: Ad copy and materials due August 15th (October 1st mailing date) Winter Issue: Ad copy and materials due December 1st (January 15th mailing date)</p>		<p>1/2 Page Ad 7-1/2" x 4-15/16" (Horizontal) or 4-7/8" x 7-1/2" (Vertical) \$175</p>	
<p>Payment</p>		<p>1/4 Page Ad 4-7/8" x 3-3/4" \$105</p>	
<p>Payment for all advertising due at time of ad placement. Additional costs for extra artwork or special effects will be billed later. Add \$15 for each photo, No Proof Pictures Accepted – Only Prints or Digital Photos (high resolution). No discounts on photos. Print-ready ads submitted on CD (Mac formatted) or sent via e-mail are accepted and will receive a 15% discount from listed base prices.</p>		<p>Bus. Card Ad 3-1/2" x 2" \$52 - 1 Time \$140 - 3 Times</p>	
<p>Contracts</p>		<p>AD PROOFS: Initial and final proofs are guaranteed to advertisers who send in ad copy and materials by the deadlines noted. Advertising copy received after deadlines will be included on a first come, first serve basis, time and space permitting.</p>	
<p>Advertising contracts are also available. Advertisers will receive an additional 10% discount for yearly contracts. Ads must be placed in three consecutive issues and paid in full at the time the first ad is placed. No limitation on ad size.</p>			
<p>NOTE: The Continental Dorset Club, Inc. reserves the right to reject any advertising or copy that may be objectionable.</p>			
<p>Send all advertising materials to:</p>			
<p>DALE SMITH</p>			
<p>Advertising Editor/Designer</p>			
<p>17917 Brim Road • Bowling Green, Ohio 43402</p>			
<p>Phone: 419/352-2332 Fax: 419/352-2332 E-mail: royal-s@earthlink.net</p>			

SUPERIOR FARMS

COMPLETE DISPERSAL SALE

Registered Dorset Flock
328 Head

EVERYTHING SELLS!!! NOTHING HELD BACK!!!

A flock that has achieved National Recognition as Premier Breeder or Exhibitor at:

**International Livestock Show
The Ohio Dorset Show
Midwest Ram Sale**

An opportunity of a lifetime to buy the highest quality Dorsets, a flock rich in Wade & Penn State bloodlines.

SALE - THURSDAY - JUNE 23, 2011 AT 10 A.M.

at

Johnson County Fairgrounds (30 miles east of Sedalia, MO)

For complete information and catalog email Superior_Farms@yahoo.com or call (405) 848-7595 ext. 140



DORSET COMMERCIAL CONNECTION

Selecting on More Than Just Good Looks

by *Melanie Barkley, Extension Educator*
Penn State University

“Wow, don’t these lambs look good this year!” Would this describe how you feel about your lamb crop for this year? Are you sure that what you are looking at is really good? One way to measure how “good” these lambs are is to weigh lambs at weaning and then adjust those weights to make a fair comparison across your lamb crop.

Programs such as NSIP (National Sheep Improvement Program) and LambPlan are designed to help you make comparisons across a breed and provide you with selection parameters for a number of traits. If you aren’t part of NSIP or LambPlan you can do some simple comparisons within your own flock. Adjusted weaning weights are one example of data that you can generate for your own flock. Weaning weights should be taken between 40 and 120 days of age and post weaning weights between 80 and 240 days of age. These are the data collection ranges recommended by LambPlan. Adjustments should be made for birth type, rearing type, sex of lamb, and age of dam. Let’s take a look at an example for two lambs born in a flock.

Lamb No.	Birth type/ Rearing type	Dam Age	Sex	Weaning Age	Weaning Weight
1101	Tw-Tw	3	Ewe	60 days	72 lbs.
1107	S-S	6	Ewe	67 days	70 lbs.

We start our calculations by determining the preweaning weight per day of age. The calculation formula is:

$$WW \div \text{weaning weight age} = \text{Pre-weaning WDA}$$

The next calculation uses this preweaning weight per day of age and then adjusts to a specific age plus an additional adjustment factor. For lambs that were weighed at an average age of 75 days or less, the adjustment is made to 60 days of age. For lambs weighed after an average of 75 days of age, the adjustment is made to 90 days of age.

$$\text{Preweaning WDA} \times \text{Standard Age at Weaning (60 or 90 days)} \times \text{Adjustment Factor from Table 1} = \text{Adjusted WW}$$

The adjusted weaning weight for these two lambs would be calculated as follows:

Lamb 1101 $60 \div 72 \times 60 \times 1.19 = 59.5$
 Lamb 1107 $67 \div 70 \times 60 \times 1.00 = 57.4$



Objective measurements can help sheep producers determine which lambs are superior and should be kept for breeding purposes.

Producers may also include birth weight in the equation by subtracting the birth weight from the weaning weight and then dividing by the days of age at weaning.

So, what can we conclude from these calculations? Lamb 1101 should be genetically superior by Lamb 1107 for weaning weight because both lambs were raised under the same environmental conditions. We can also conclude that Lamb 1101 should be more likely to produce twins. However, bear in mind that the heritability of prolificacy is only 10% (SID Sheep Production Handbook) so environmental factors can greatly affect the likelihood of ewe 1101 to produce twins.

These adjusted weights should be one piece of the principles that a sheep producer uses for selection. Other selection factors might include, but not be limited to, post weaning weight, yearling weight, carcass data, other reproductive traits, and fleece traits. And, a very important piece of those principles is visual appraisal. Even though the measurements might look great, sheep still need to be structurally correct, be free of faults such as inverted eyelids (entropion), and have a good disposition. (Just ask a cattle producer about decreased production caused by cattle with a bad attitude and they will tell you how important a good disposition can be!) There are other selection principles that sheep producers use within their flocks. The goals of your operation will dictate what these selection principles entail and what is acceptable and what is not acceptable for animals kept for breeding stock.

Information for this article was adapted from “Recommendations for Sheep Selection Programs” written by Dan Morrical, Professor at Iowa State University. For more information on sheep selection using performance data adjustments, check out Dr. Morrical’s fact sheet that can be found on the internet at: <http://www.extension.iastate.edu/publications/pm989x1.pdf>

Table 1. Adjustment Factors for Correcting Weaning Weight

Birth Type	Rearing Type	Age of ewe and sex of lamb								
		1 year			2 or > 6 years			3-6 years		
		E	W	R	E	W	R	E	W	R
S	S	1.13	1.10	1.02	1.08	1.05	0.98	1.00	0.98	0.91
S	Tw	1.21	1.17	1.07	1.13	1.11	1.03	1.05	1.03	0.96
Tw	S	1.29	1.25	1.15	1.19	1.16	1.08	1.10	1.08	1.00
Tw	Tw	1.38	1.33	1.21	1.29	1.26	1.17	1.19	1.16	1.08
Tr	S	1.40	1.26	1.23	1.28	1.25	1.16	1.18	1.15	1.07
Tr	Tw	1.51	1.45	1.31	1.28	1.35	1.25	1.27	1.24	1.15
Tr	Tr	1.80	1.72	1.53	1.54	1.50	1.38	1.36	1.33	1.23

Table 1
E = ewe, W = wether, and R=ram
 This adjusts lamb weights to a single born ewe lamb basis.
 Lambs born as quads or more should use the triplet-born correction factors.

Benefits of the CDC Dorset Excellence Program

by Kathy Soder, K Bar K Farm

K Bar K Farm was pleased and honored to be the recipient of the 2008 Polled Dorset Excellence Award. This program was developed to recognize CDC members who are raising productive Polled and Horned Dorset sheep that meet the Dorset breed standard. The program includes submission of pictures to establish breed standard in the flock as well as a questionnaire that collects information on production and marketing information on the flock, which differentiates this program from a show where phenotype is the primary emphasis.

Why apply for the CDC Dorset Excellence Program?

1. Minimal investment except a little time to put together some text and pictures (who doesn't like to talk about their flock or have hoards of pictures of their sheep?)
2. Flock recognition/increased exposure
3. Free advertising (press releases, article in the Dorset Connection, event where plaque is awarded)
4. Monetary award
5. Your application shows support for the CDC as they strive to meet the needs of the production/commercial sector of their membership.

Our flock has benefited from the exposure provided by the award and resulting press releases. This has helped us to market our breeding stock to a larger sector of the industry. While individual paid advertisements are effective marketing tools, the endorsement provided by the award and feature article validates the winning flock's breeding program through this recognition by the CDC.

Many commercial Dorset breeders have complained in the past that the CDC only catered to the show ring. Gathering at shows

makes it easy to advertise, network, and reward that sector. Commercial Dorset breeders, on the other hand, have historically been 'in the shadows' - they don't get the exposure through advertisements, showing, etc. which means it can be challenging to network, collectively advertise, and to find other like-minded breeders to source new genetics.

The CDC has been brainstorming over the last few years to address this issue. They recognize that it will take some 'out of the box' thinking to service the 'production' or 'commercial' sector of the industry. The CDC Board of Directors and Production Dorset Committee are always open to suggestions from commercial Dorset breeders on how to improve the services provided to this sector of the membership. Constructive comments and suggestions result in much more action rather than complaints of 'they don't do this or that for me...'. Please contact members of the BOD or Production Dorset Committee with any suggestions to improve this service.

The CDC Dorset Excellence Program is one way that production/commercial Dorset flocks can be showcased in a positive light to the entire Dorset industry. I encourage all commercial-minded CDC members to consider applying for this award.

More information on the Dorset Excellence Program can be found at: www.dorsets.com. Click on "Excellence Program." in the menu across the top of the page.

2011 Dorset Breeder Excellence Applications Due December 31, 2011

Awards for both Polled and Horned Dorset Breeders
Plan now for the application process by obtaining some nice summer and fall photos for the application!!



Ankeny Acres

Home of the Blue Collar Genetics



"Celebrating 27 years of Raising Traditional Dorsets"

- **Selling breeding stock into 27 states**
- **Dorset sheep that are forage based**
- **Dorsets that are deep bodied heavy muscled**
- **Dorsets that are efficient & easy keepers**
- **We are your Australian Genetic Connection**

Ankenyacres.com

ankenyacres@clearwire.net

1-208-463-0627



ANNOUNCEMENTS

2011 NATIONAL DORSET SALE TO BE HELD IN SEDALIA AT THE MID-WEST STUD RAM SALE

The 2011 National Polled Dorset and Horned Dorset sale will be held this year in conjunction with the Midwest Stud Ram Sale at the Missouri State Fair-grounds in Sedalia, Missouri. Dates for the actual sale events are June 21-24, 2011. The Polled Dorset Breeding Sheep, Horned Dorset Breeding Sheep, and the Dorset Wether Sires and Dams will all be included in this national event as the wether breeding stock is registered at this sale.

Following is a schedule of all the National Sale activities:

-Tuesday, June 21st, 2 PM- 7 PM: Breed Type Inspection for all Dorset entries

-Wednesday, June 22nd, 8 AM: Polled & Horned Dorset Breeding Sheep Show judged by Brad Angus, Dorset Wether Sires and Dams at approx. 3:00 PM following the Shropshires judged by Kyle Smithwick.

-Thursday, June 23rd, 4 PM: CDC Board of Directors Meeting, State Fair Best Western

-Friday, June 24th 7:30 AM: CDC Annual Membership Meeting & Breakfast, Youth Building, Missouri State Fairgrounds

-Friday, June 24th about 4:30 PM: (following the Hampshire & Suffolk Breeding Sheep Sale) Dorset Breeding Sheep then Wether Sire and Dam Sale

The Continental Dorset Club will once again be doing the Dorset Breed Type Inspections prior to the sale show as this is the National Dorset Sale. It should be noted that all Dorset sheep will need to be on the grounds Tuesday afternoon to be inspected. A consignor letter will be mailed out prior to the sale outlying all details. A big thank-you in advance to Dorset consignors for your cooperation.

During the sale show there will be classes in the breeding sheep show for Best Headed Dorsets. Ewephoric Dorsets, Shafter, California has generously donated these awards for the National Dorset Sale. Polled and Horned Dorset Rams and Ewes will be picked for these prestigious honors.

The National Junior Dorset Association will be holding a major fund raiser for their scholarship program during the National Sale. Gift Baskets will be offered through a silent auction activity during the week. The NJDA directors are looking for donations for this event. Baskets may be delivered Wednesday morning in the Swine Barn to the show ring. Regional or State Baskets will be greatly appreciated. The NJDA Association offers up to two \$1000

college scholarships each year and need to assist the maintenance of this fund. Also, there will be 1% deducted from the Dorset sales that will also go into this fund. Thank-you in advance for support for this very worthwhile cause. Please contact NJDA President Troy Longenecker phone (717)679-7394, [email:tazfarmdorset@com-cast.net](mailto:tazfarmdorset@com-cast.net) or any other NJDA director.

The Continental Dorset Club Annual Meeting and Breakfast will be held Friday, June 24, 2011 at 7:30 AM in the Youth Building (same building as last time) Missouri State Fairgrounds. No reservations are needed, come as you are. The Missouri Dorset Breeders Association will be hosting the event for the Dorset Breeders and breakfast will be compliments of them. Thank-you to the Missouri Dorset Breeders for doing this for the annual meeting, which will be held immediately following breakfast.

The National Sale is a designated futurity sale and there should be a lot of quality ewe lambs nominated for the program for junior buyers to look over. Please remember as consignors to nominate your ewe lambs, and as buyers to get your lambs tattooed before you leave the fairgrounds.

Looking forward to seeing everyone in Sedalia and having a successful 2011 National Dorset Sale!

NORTH CENTRAL & EASTERN CDC DIRECTOR ELECTION RESULTS

This past spring the CDC held director elections in the North Central and Eastern Regions. Two new board members have been elected as both current CDC directors from those regions have retired off the board serving two three-year terms.

Congratulations to Jeff Poynter, Paris, IL and Coulter Passwaters, Bridgeville, DE on being elected to the board. The CDC looks forward to working with them for the next three years. Jeff and Coulter will be featured in the next "Dorset Connection" so all of our members can become better acquainted with them.

A BIG thank-you goes to retiring Eastern Director Melanie Barkley, Manns Choice, PA and retiring North Central Director Larry Hunter, Roseville, IL. Both have served the CDC for six years. They both have been very diligent in their responsibilities, and have been very helpful and progressive on the CDC board representing their districts. Their input will be sorely missed and the CDC certainly appreciates their dedicated support of the Dorset breed.

ANNOUNCING SUMMER/FALL CDC OFFICE CLOSINGS

The CDC Office remains committed to providing the best service to our breeders on registration work but due to budget constraints we have cut back on outside help in the CDC office. We will still be able to provide you with timely service but there are times when I will be out of the office in this busy upcoming sale and show season. Please make note of these times and plan accordingly:

-June 21-24, 2011- National Dorset Sale, Sedalia, MO

-June 30- July 3, 2011- All-American Junior Show

-July 7-10, 2011 - New England Sale & New England Regional Jr. Dorset Show

-July 28- Aug 8, 2011 - Secretary's Vacation (The office is covered a couple of days to get rush registration work done.)

-September 12-28, 2010 - Eastern States Exposition Sheep Show (I do take the CDC Office with me to this event so registration work can be completed. Emergency contact information will be left on the CDC phone.)

Please note that we have three consecutive National Dorset events three weeks in a row at the end of June through early July. **PLEASE** plan ahead and get your registration work done ahead of time so we can assure you of timely service.

WETHER REGISTRATION NOW AVAILABLE

The CDC is now going to be registering wethers for participation in 2011 CDC sponsored events. New registration papers have been ordered and they will feature the extended pedigrees just like the breeding sheep. The cost will be the same rate of \$6.00 a head for CDC members.

At NAILE there is \$250 total being awarded to the top two Dorset wethers if they are pre-registered with the CDC. At the All American Junior Show all of the wethers will need to be registered to participate in the Dorset market lamb classes. At any Regional Junior Show, that offers a specific Dorset wether class, the lambs will also be required to be registered.

The CDC also sponsors several market lamb shows awards around the country, if the Grand Champion Overall is a purebred Dorset the CDC will pay \$500 and \$250 for Reserve Champion. These lambs will also need to be pre-show registered to collect the special premiums offered by the CDC.

RAM & EWE FARM

Breeders of "Flat Out Good" Dorsets!



2010 National Grand Champion Ram

"Wouldja" sired the 2010 Illinois State Fair Grand Champion Ram, "Next Step" Ram & Ewe 0574RR. He was sold to Duane Aldrige, SD. "Next Step" offspring averaged \$1,350.00 at the 2011 Ohio Dorset Show & Sale!



Ram & Ewe 0610RR – This October ram lamb is heading our consignment at the National Dorset Sale in Sedalia. He is an "RSVP" son and dammed by an "S & P" daughter.



We have 4 head consigned to the National Dorset Sale in Sedalia... Stop by and see!

"WOULDJA" Ram & Ewe 0475QR

The ONLY 2-Time National "Felt" Winner
AND
Best Headed Award Winner!

...Owned and shown by Paul Wissinger of Turtle Mead Farms, "Wouldja" was raised and sold by us at the 2009 Midwest Stud Ram Sale where he was the Grand Champion Ram!



2009 Reserve National Grand Champion Ram

"Wouldja" is sired by "Switch Back" Ram & Ewe 0430RR now at stud for Pine Ridge Dorsets. He also sired Highfield 0664, the \$5,000 Reserve Senior Champion Ram at the 2011 Ohio Dorset Sale, and "Bail Out" McCrumb 938, now at stud for Sugarloaf Dorsets and Northern Starr Livestock.

We Have Raised 4 Best Headed Award Winners!

Also Thanks To These Buyers:

Jonathan Albright got his Futurity fall ewe lamb from us at the Ohio Dorset Sale.
...and...

Michael Pope selected a real nice yearling ewe at the farm privately.



"WHISKEY" Ram & Ewe 0599RR – This "RSVP" son was 3rd in class at the Ohio Dorset Sale and sold to Kylie Schakel of Indiana. Thank you Kylie and look for fall lambs by him as he is already at work. Kylie also selected our 4th place fall ewe lamb for her Futurity lamb this year.

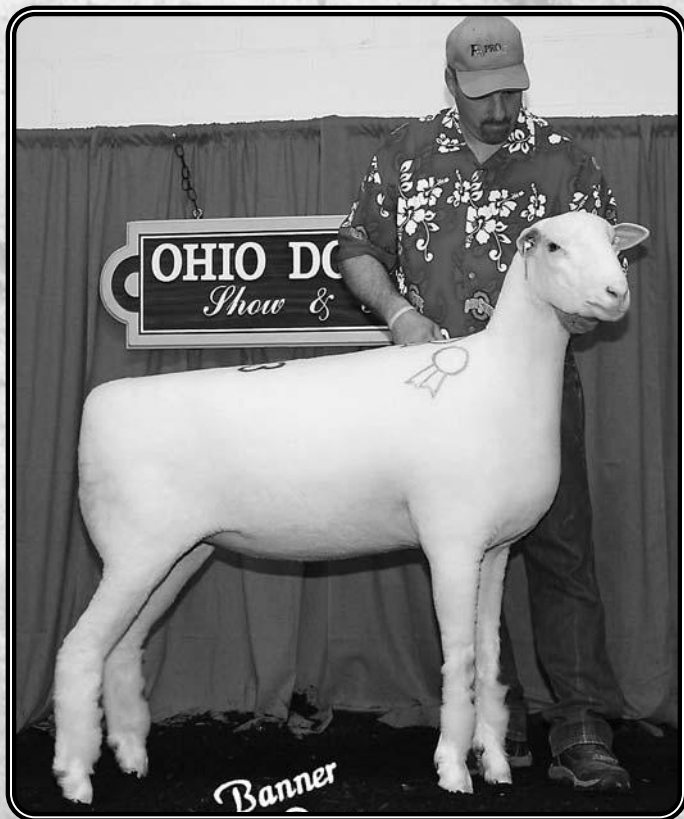
Jeremy, Jamie, Austin & Justin
ETZLER

RAM & EWE FARM
Polled Dorsets

425 Counts Road • South Solon, OH 43153
email: jetzler@att.net

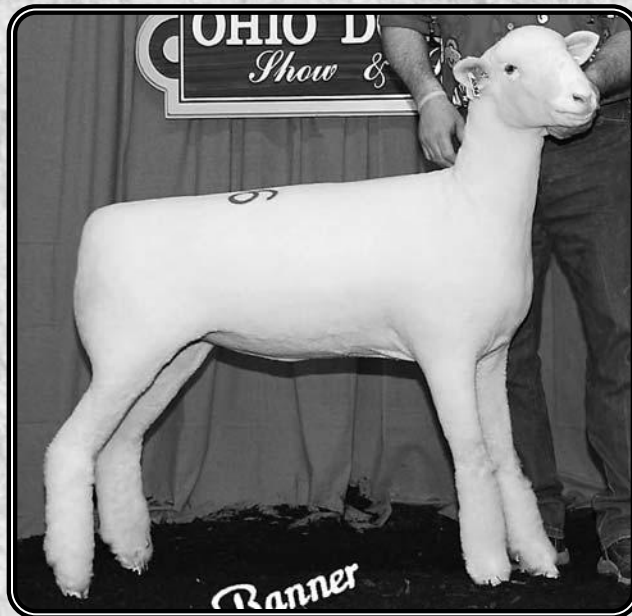
740/874-9244
614/989-4025

Thanks to All Our Buyers at the Spring Sales!



Grand Champion Ewe at the 2011 Ohio Dorset Show & Sale

Our winning yearling ewe sold to Johanna DeJoria, Oregon, for \$4,000. Sired by "Optimus Prime".



Reserve Jr. Champion Ewe at Ohio

1st place Class 2 Early Fall Ewe Lamb and Reserve Junior Champion Ewe sold to Kyle, Kurt & Kaden Gutormson, SD, for \$4,300. Sired by Twin Oaks 938.



Two Winning Fall Ram Lambs at the Ohio Dorset Sale

Grand Champion Ram Illini Dorset Sale



(Above) 1st place Class 1 Early Fall Ram Lamb sold to Gus Ross, Ohio, for \$5,700.

(Right) 1st place Class 2 Early Fall Ram Lamb sold to Dusty Rincker, Illinois, for \$3,500. Both of these rams are sired by "Optimus Prime".

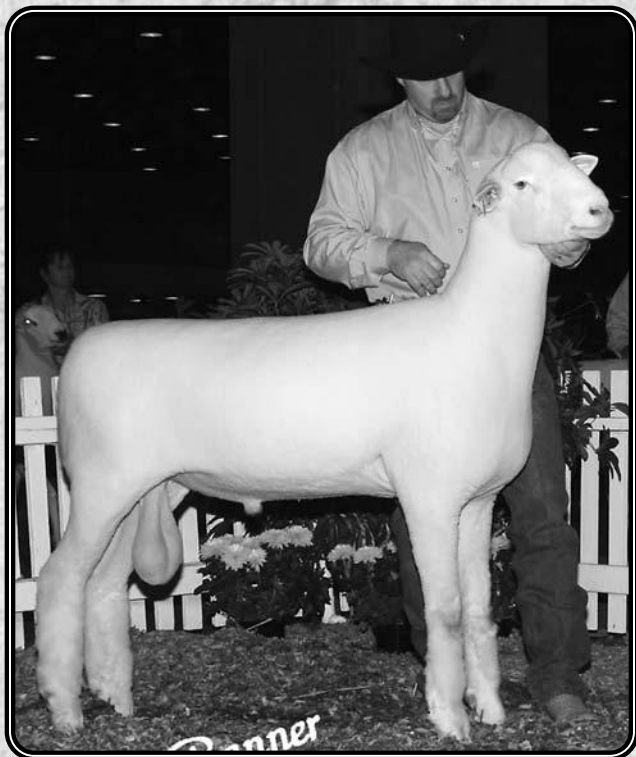
Thanks to our other buyers at Ohio, Illinois and at the farm – Mindy Gibson, MO; Sid DeVries, IL; Lee Donald Olson, IA; DM Callison, WV; and A.Thornsborough, IN.

Champion Early Fall Ram Lamb at the Illini Dorset Sale sold to Crystal Creek Farms, Iowa, for \$3,200. Sired by "Optimus Prime".

THE GARY SAYLOR FAMILY

Gary • Becky • Cameron • Kelsey • Cole
937/464-7214 • Cell: 937/597-7214

Announcing... "Optimus Prime" Has a New Home!



"OPTIMUS PRIME"

A truly great stud ram at Twin Oaks Dorsets the past few years. He sired four of the five winning individuals pictured at left!

"Optimus Prime" in his "going to town" clothes – Junior Champion Ram at the 2008 NAILE.

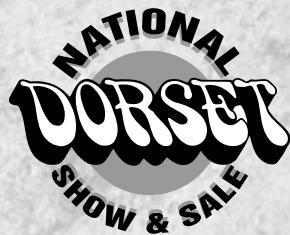
Sold to McDaniel and McCarthy...

Congratulations to McDaniel Ranch, Larry & Dixie McDaniel, and McCarthy Dorsets, Farabee & Joy McCarthy, on their purchase of "Optimus Prime". Twin Oaks, along with these two buyers, will have fall lambs sired by "Optimus Prime".

A special Thanks to everyone who bid on "Optimus Prime" during our recent online sale.



"Optimus Prime" in his "work" clothes pictured March 2011.



Watch for our consignment at the National Sale in Sedalia...

Fall Ram Lamb and Fall Ewe Lamb sired by "Optimus Prime", Winter Ram Lamb and Winter Ewe Lamb sired by "938".

"A Driving Force in the Dorset Breed"



19570 County Road 75 • Belle Center, Ohio 43310
e-mail: gsaylor@watchtv.net

YOUTH NEWS

2011 ALL-AMERICAN JUNIOR SHOW HEADING EAST TO DELAWARE

The 2011 All-American Junior Show has been set for July 1st-3rd at the Delaware State Fairgrounds, Harrington, DE. Dorset breeding sheep and market lambs will be shown Sunday, July 4th. The Horned Dorset breeding classes will be first followed by the Polled Dorsets. Judges for this year's All-American are Ryan Hendricks, IN and Aaron Crome, IL

The 2011 All-American will once feature slick shorn classes for breeding sheep for the third year. The Dorsets will have these additional classes. The Dorset market lambs will need to be registered beforehand with the CDC to be shown at the All American.

The Delaware folks are sponsoring and hosting many additional activities including a Rehoboth Beach & Boardwalk bus trip on Thursday, Pizza on Friday night for the basketball tournament, a Crabfest and Ice Cream Social on Saturday night, and special exhibitor continental breakfasts on Saturday and Sunday mornings. Please take advantage of these sponsored activities for your family and don't forget the bus beach trip does need to be signed up for ahead of time on the entry form .

Following is a schedule of the 2011 events:

Thursday, June 30th:

8:00 AM - Bams open-exhibitors and sheep may move in
2:00 PM - Rehoboth Beach & Boardwalk Trip (buses provided by Chambers Bus Service and drivers sponsored by the Delaware Junior Livestock Exposition)

Friday, July 1st:

8:00 AM - Announcements
8:30 AM - Pick-Up Exhibitor T-Shirts & Receive Information Packets
TBA - Skill-a-thon open to contestants
9:00 AM - Check-in papers, fleeces and promotional items.
10:00 AM - Judging Contest Begins and Market Lambs Weighed & Classified
12:00 Noon - All-American Lamb Camp: 1st session.
1:00 PM - Opening Announcements & Group Photo
1:30 PM - Showmanship Classes
TBA - Skill-a-thon closes for the day
6:00 PM - 3-on-3 Basketball Tourney (pizza provided by the Delaware State Fair)

Saturday, July 2nd:

8:00 AM - Blue Ring
-Tunis Breeding Sheep & Mkt Lambs
-Shropshire Breeding Sheep & Mkt Lambs
-Southdown Breeding Sheep & Mkt Lambs
8:00 AM - Red Ring

-Natural Colored Breeding Sheep & Best Fleece
-Lincoln Breeding Sheep & Best Fleece
-Oxford Breeding Sheep & Mkt Lambs
-Shetland Breeding Sheep & Best Fleece
-Cotswold Sheep & Best Fleece
-Montadale Breeding Sheep & Mkt Lambs
-Romney Breeding Sheep & Best Fleece
-Columbia Breeding Sheep & Best Fleece
-Dorper Breeding Sheep & Mkt Lambs
TBA - Skill-a-thon opens to contestants
11:00 AM National Junior Dorset Association Meeting & BBQ followed by breed type education program
12:00 Noon All-American Lamb Camp - 2nd session sponsored by Michigan Farm News
TBA - Skill-a-thon closes for the day
7:00 PM -Crabfest Dinner (sponsored by Ketchum Equipment) and Ice Cream Social (sponsored by Ridge Betts Horned Dorset & Whitney Betts Southdowns)



Sunday, July 4th:

8:00 AM - Blue Ring
-Cheviot Breeding Sheep & Mkt Lambs
-Hampshire Breeding Sheep & Mkt Lambs
8:00 AM - Red Ring
-Horned Dorset Breeding Sheep & Mkt
-Polled Dorset Breeding Sheep & Mkt
-Immediately Following - 3-on-3 Basketball Final Game and Lamb Camp Graduation
-Closing Ceremonies - Announcements of awards and raffle drawing, sheep released after closing ceremonies.
It should be noted that the Northeast Youth Sheep Show in West Springfield, MA that is featuring the National Southdown Junior Show and New England Regional Junior Dorset show, is going to be held the weekend immediately following the All American and the facility will be ready to receive sheep starting Sunday night, July 3rd for your travel convenience.

All exhibitors who showed in the All-American within the last two years should of been mailed a premium book. Entries are also available at: www.allamericanjunior-show.com Entries closed May 20th but the All American does accept late entries at no extra cost.

Accommodations:

Main Hotels with Special Show Rates:

-**HOLIDAY INN EXPRESS- 17271 S Dupont Hwy, Harrington, DE 19952 (302) 398-8800**
-**AMERICINN - 1259 Corn Crib Rd., Harrington, DE 19952 (302) 398-3900**
-**COMFORT SUITES- 23420 Sussex Hwy., Seaford, DE 19973 (302)628-5400**
-**Camper sites also available at the Delaware State Fairgrounds \$20.00 per night**
-**Other hotels located in nearby Seaford & Dover, DE**

The CDC would like to thank Paul & Nancy Wissinger, Sinking Spring, PA and Joe & Priscilla Crill, Rochester, IN for their recent donation of fall ewe lambs that were sold at the Ohio Dorset sale to help support the Dorset shows at the 2011 All-American.

THANK-YOU to the donors of the ewe lambs and to all those that bid on the lambs. Riverwood Farms, Powell, OH and Keegan Padgett, Kirklint, IN were the eventual buyers of the lambs.

Breeders also signed up to sponsor classes at the upcoming All-American. Thank-you also goes to the following class sponsors:

-Van Bair Farms, Dauphin, PA; Purple Ribbon Farms, Arcola, IL; Pine Ridge Dorset, East Earl Berlin, PA; Mona Lisa Petterson, Bothell, WA; MGM Dorsets, Plymouth, IN; Poynter Sheep Farm, Paris, IL; Parker Farms, Edinburg, IN; Ram & Ewe Farm, South Solon, OH; Bianchi Family, Hollister, CA; Natalie Harmeyer, Richmond, IN; Millennium Farms, Oxford, IN; Shepherds View, Bridgeville, DE; Twin Oaks Dorsets, Belle Ctr., OH; Evan Snyder, Oklahoma City, OK; Superior Farms, Yukon, OK; Sidwell Club Lambs, Gill, CO; Oberholtzer Horned Dorsets, East Earl, PA; Spring Hill Farm-Mike & Kelly Wright and Austin & Lexi Grace, Alstead, NH; Cassell Horned Dorsets, Wytheville, VA; DeJoria Farms, Newburg, OR; Saylor Sale Management, Belle Ctr., OH and Warren, Sally & Simon Squires, Westchester, OH. There 12 classes still available for sponsorship. If you are interested please contact the CDC Office.

All-American Raffle tickets are still available for the the \$1000 Cash Prize, Hydraulic Lift Trimming Stand and Pop-Up Canopy. If you haven't returned your tickets yet from your registration work please do so or if you want some tickets contact the CDC Office.

We are all looking forward to a great Dorset Show at this year's All-American! A big **THANK-YOU** needs to go out to Bruce Betts, Charlotte & Coulter Passwaters and all of the Delaware folks for all their efforts in organizing this year's show in Delaware! Looking forward to traveling to Delaware this summer!

2011 REGIONAL JUNIOR SHOWS

**New England Regional Jr. Show
July 8-10, 2011**

held in conjunction with the
Northeast Youth Sheep Show
BIG E Fairgrounds

West Springfield, MA

Entry information contact:
Polled: Pat Poitras (413)283-9852
Horned: Kelly Wright (603)357-5608
website: nesheep.org

**Western Regional Jr. Show
July 13-17, 2011**

held in conjunction with the
California State Fair
Sacramento, CA

Entry information contact:
California State Fair
website: www.bigfun.com

**North Central Regional Jr. Show
August 21, 2011**

held in conjunction with the
Illinois State Fair

Illinois State Fairgrounds
Springfield, Illinois

Entry information contact:
Larry Hunter (309)337-0380
website: <http://www.agr.state.il.us/isf>

**Great Lakes Regional Jr. Show
August 28, 2011**

held in conjunction with the
Kentucky State Fair

Kentucky Exposition Center
Louisville, KY

Entry information contact:
Kentucky State Fair
web site: www.kystatefair.com

**Great Plains Regional Jr. Show
October 2, 2011**

held in conjunction with the
Tulsa State Fair

Tulsa, OK

Entry information contact:
Casey Sidwell (970)302-9451
website: www.tulsastatefair.com

**Eastern Regional Jr. Show
October 9, 2011**

held in conjunction with the
Keystone International Livestock Exposition

Farm Show Complex
Harrisburg, PA

Entry information contact:
KILE
www.keystoneinternational.state.pa.us

**Presenting Our "Full Throttle" Consignment
At the 2011 Ohio Dorset Show and Sale!**



2nd Slick Sheared Yearling Ewe and sold to Mary Liddle, Roberts, Wisconsin.



Our Spring Yearling Ewe sold to Chelsey Peters, Nevada, Texas.

Our Fall Yearling Ewe sold to Busch & Family, Keystone, Iowa. They also bought a fall ewe lamb at Ohio!

Be looking for more of our Dorsets sired by "Full Throttle" in the future!



Also Thanks to These Buyers!

- William McCord, Milan, New York, bought two Fall Ewe Lambs
- Lori Woods, Baylis, Illinois, purchased a Fall Ewe Lamb

Special thanks to all our buyers and to everyone for their compliments regarding our "Full Throttle" sired consignment.

Dennis, Chris, Adam, Nick & Cody Wood

Woodland Dorsets

937/464-7296 9165 Township Road 49 Belle Center, Ohio 43310

2011 SCHOLARSHIP APPLICATION AVAILABLE ON-LINE

The National Junior Dorset Association annually presents up to two \$1000 scholarships. To qualify, a student must be completing at least half of his or her college or technical school studies the year in which the application is made or be enrolled in graduate school.

These awards are available to current and previous members of the Continental Dorset Club Youth Enrollment Program or current lifetime members of the

Continental Dorset Club. Applicants may be majoring or specializing in any type of field as these awards are not limited to agricultural majors.

The application must be post-marked **September 1, 2011**. Two letters of recommendation must be enclosed with the application. The individual completing the recommendation may return it to you in a sealed envelope, which has been signed over the flap. Send applications to:

**Continental Dorset Club, Inc.
Junior Dorset Assoc. Scholarship
P.O. Box 506
North Scituate, RI 02857-0506**

continued on page 16

YOUTH NEWS, cont.

The National Junior Dorset Association Scholarship Committee will review all applications received. The top applicants may be subject to a personal interview with the committee either in person or by telephone. Final awards are selected by the committee. Applicants will be notified of the selections by October 10, 2011. These awards will be presented at the Annual Meeting of the National Junior Dorset Association in Louisville, KY on Saturday evening November 12, 2011. The complete scholarship application is available on the CDC Website at:

www.dorsets.homestead.com .

REGIONAL JUNIOR SHOW ELIGIBILITY REQUIREMENTS

Following are the eligibility requirements for the Regional Junior Dorset Shows for your information:

1) Exhibitor must be a current member of the CDC whether in the youth enrollment program or as a lifetime member.

2) Exhibitor needs to be 21 years old or younger as of January 1st of the current year. There is no lower age limit but the exhibitor must be able to lead and/or control the head of his/her animal in the show ring.

3) Exhibitor must be present to show their own animals unless physically impaired. The junior owner will need to be at the head of the animal controlling it in the show ring, unless of course they have more than one entry in a class in which case another junior exhibitor showing their second animal is acceptable.

4) Sheep must be registered in the youth's name. Youth partnerships are acceptable except for futurity animals which must be in the individual youth owner's name ONLY. Farm names or "family" ownerships are not acceptable.

5) Exhibitor can show at an unlimited number of regional junior shows per year, the CDC does prefer they at least show at the regional show in which they reside if possible.

7) **EWE FUTURITY PROGRAM:** Your futurity ewe can earn double points at a regional junior show for the futurity ewe program. If you show at more than one regional show only your top point total will be doubled.

Regional junior shows are sometimes held in conjunction with existing shows so there definitely may be other show specific rules and regulations that apply. Please be aware of these additional requirements when making out your entries to these special shows.

DORSET EWE FUTURITY PROGRAM GETTING ANOTHER GOOD START IN 2011

To date we have had 69 polled ewe lambs nominated in the spring Dorset Sales, and 32 lambs have been tattooed by their new junior owners to participate in this year's program. In the horned dorset ewe lamb futurity, we have had 17 ewe lambs nominated, 10 head have been tattooed by their new junior owners. The yearling ewe program has had 4 nominations so far with nominations closing May 31st.

Three breeders have elected to participate in the group nomination program where all of their ewe lambs sold at this year's designated sales will be eligible for the futurity. Thank you to the following group nominators:

-Riverwood Farms, Powell, OH-
-Pine Ridge Farm, East Berlin, PA-
-Cassell Horned Dorsets, Wytheville, VA-

Of course there are a lot of individual nominators also. The overwhelming support by the Dorset breeders is the major reason why this program has become so successful! Juniors are able to select from a large number of ewe lambs that will fit into both their breeding program and financial budget. There are plenty of sales remaining where junior buyers can select futurity ewe lambs, including the National Dorset Sale at the Midwest Stud Ram Sale in Sedalia. See the sales listed in the Dorset Calendar on page 4.

The futurity numbers are down a bit this year because of the fewer number of ewe lambs being entered in the sales but the percentage of ewe lambs being nominated is as high as it has ever been.

The CDC Board would like to examine the nomination process for private treaty on farm sales to possibly be incorporated into the futurity program but there has been minimal response from the breeders. If you have an interest PLEASE contact a board member with your input. **THANK-YOU!**



LETTER FROM JUNIOR DORSET ASSOCIATION PRESIDENT TROY LONGENECKER

Junior Dorset Breeders,

2011 is sure to be a very promising year for the Dorset Breed. Starting off the year with a record high Ohio Dorset Sale was just a phenomenal accomplishment for the Dorset Producers. Thanks to all that brought such a quality set of sheep, and for those who bought and bid on sheep as well, especially with the way the economy has been, and the price of fuel to travel to all of these events. On behalf of the Junior Dorset Association I would like to Sincerely Thank Paul and Nancy Wissinger (Turtle Mead Polled Dorsets) as well as the Crill Family for donating ewe lambs in Ohio to help benefit our Junior All-American this summer. Thanks as well to Riverwood Farms, and Keegan Padgett for purchasing these ewes, we appreciate everyone's support. Lastly I would also like to thank those in Ohio that sponsored classes for the All-American. Please get your Donations into Debbie, and if others are still willing to sponsor and or would like to sponsor a class please contact Deb.

College is starting to wind down here in Happy Valley, PA and I know I am not the only one counting down the weeks until Keystone Classic, Sedalia, All-American etc. I hope all juniors are as ecstatic as I am to start the show season. I would like to remind everyone that in Sedalia, the Juniors will have silent auction gift baskets. It is important that the directors remember to bring two baskets each to Sedalia or find a way to get them out there to Deb. Like Mike Galleher mentioned in his segment of the last connection, the funds are running dry, and we need to increase our income or decrease the expenses of the association. Please continue to register and transfer to help the CDC revenues, but also please continue to support the Juniors, as we are the future and the driving force of the Dorset Breed.

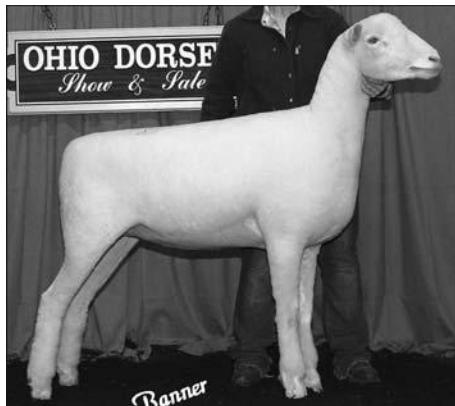
Work hard, and safe travels to all...See you on the show road this Spring and Summer!

Respectfully Submitted,
Troy Kenneth Longenecker
President National Junior Dorset Sheep Association

LAUDEN ACRES

COMMITTED TO EXCELLENCE

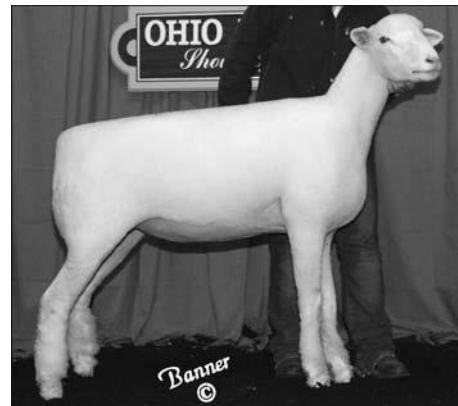
The 2011 Ohio Dorset Sale – Another Success – Special Thanks!



**LA 698 – 2nd Fall Yearling Ewe
Class I, 2011 Ohio Dorset Sale**
Purchased by Sidney DeVries, Freeport, IL.



**LA 686 – 2nd Fall Yearling Ewe
Class II, 2011 Ohio Dorset Sale**
*Purchased by Kyle, Kurt & Kaden
Gutormson, Brookings, SD.*



**LA 709 – 2nd Spring Yearling Ewe
Class I, 2011 Ohio Dorset Sale**
*Purchased by Kyle, Kurt & Kaden
Gutormson, Brookings, SD.*

Other successful bidders were: Kendrick Dorsets, Vermont, IL, and Glenn Stunkel, Tuscarora, MD.

See Our Entries at the 2011

MIDWEST STUD RAM SALE/NATIONAL DORSET SALE

OUTSTANDING!

Another great effort by Kevin, Sara and Katherine Kuykendall, Isaac Garges, Paul Wissinger and Crew for fitting and showing our sheep.

***Farm Visits Are
Always Welcome!***



LA 684 RR



LA 695 QR

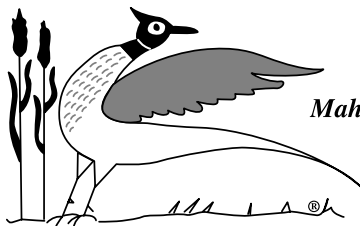
Both of these “Best Bet” Fall Yearling Ewes sell in Sedalia, Missouri.
Looking forward to visiting with you!

LAUDEN ACRES

Flock Consultants:

Timothy Hall
Narrow Lanes Dorsets
570/556-6381 (Cell)

Dick Kuzemchak
814/280-2817 (Cell)



*Division of
Mahantongo Game Farms
Established 1935*

Mahantongo Game Farms

559 Flying Eagle Road
Dalmatia, PA 17017
570/758-2095 (Fax)
mgf@tds.net (Email)
www.laudenacres.com

Lynn A. Laudenslager • 570/758-6284 (Office) • 570/847-9817 (Cell)

2011 DORSET SPRING SALES RESULTS

Ohio Dorset Sale

March 18-19, 2011

Eaton, Ohio

Judged by Billy Wade

Townsend Best Polled Dorset Consignment Award

Spilde Brothers-Kent & Dan, Stoughton, WI

POLLED DORSETS:

-Fall Yearling Rams (7 head avg. \$2,671.43):

- 1) **Grand & Senior Champion:** Pine Ridge Dorsets, PA to Reynolds Stock Farm, OR; Spilde Brothers, WI; Johanna DeJoria, OR & Kristina Repasky, MN \$8000
- 2) **Reserve Senior Champion:** Robert & Linda Highfield, OH to Kyle, Kurt & Kaden Gutormson, Brookings, SD \$5000
- 3) Spilde Dorsets, WI to Reynolds Stock Farm, Aumsville, OR, Johanna DeJoria, Newburg, OR, Kristina Repasky, Prior Lake, MN and Spilde Bros-Ken & Dan, Stoughton, WI for \$3500
- 4) Smith Sheep Farm, IL to A. Thornsborough, Lebanon, IN & JL Thornsborough, Rossville, IL \$900
- 5) Bianchi Dorsets, CA to Anthony Rasnick, North Tazewell, VA \$600
- 6) Mona Lisa Pettersson, OR to Casper Dorsets, Menomonie, WI \$500

-Spring Yearling Rams: (7 head avg. \$900.00):

- 1) Riverwood Farms, OH to Cliff Kurt, Fergus, Ontario, Canada \$1600
- 2) Paul & Nancy Wissinger, PA to Mona Lisa Pettersson, Bothell, WA \$1900
- 3) Spilde Dorsets, WI to Savannah Martin, Summitville, IN \$1050
- 4) Millennium Farms, IN to Ed, Tina & EJ Holz and Brandy Csizmar, Camden-Wyoming, DE \$300
- 5) Linda Pauly, UT to Barbara Sherlock, Edinboro, PA \$450
- 6) Pine Ridge Dorsets, PA to Johnson Bros., Hillsboro, PA \$250
- 7) MGM Dorsets, IN to Fruechte Family Dorsets, Estelline, SD \$750

-Early Fall Ram Lambs (14 head avg. \$1,294.64):

- 1) **Reserve Junior Champion:** Twin Oaks Dorsets, OH to Dusty Rincker, Stewardson, IL \$3500
- 2) Twin Oaks Dorsets, OH to Gus Ross, Eaton, OH \$5700
- 3) Riverwood Farms, OH to Mason Roalsvig, Amherst, NY \$900
- 4) Egan Dorsets, IL to Reynolds Stock Farm, Aumsville, OR & Johanna DeJoria, Newburg, OR \$350
- 5) Ram & Ewe Farm, OH to Kylie Schakel, Oxford, IN \$1500
- 6) Kaitlyn Verhaeghe, IN to Simmons Family Farm, Adel, GA \$550
- 7) Smith Sheep Farm, IL to Lexi, Libby, Kali & Kyla Wolkow, DeSmet, SD \$600
- 8) Rick Klampe, OR to Guy McKean, Mercer, PA \$225
- 9) Twin Oaks Dorsets, OH to DM Callison Dorsets, Hillsboro, WV \$1100
- 10) Twin Oaks Dorsets, OH to Sidney DeVries, Freeport, IL \$1500
- 11) Riverwood Farms, OH to 3 ADH Farm, Mount Jackson, VA \$600

12) Ram & Ewe Farm, OH to Rocky Knob Farms-Liddle Family, Roberts, WI \$700

13) Spilde Dorsets, WI to 3 ADH Farm, Mount Jackson, VA \$650

14) Van Bair Farms, PA to Leon Byers, Harvard, IL \$350

-Late Fall Ram Lambs (8 head avg. \$546.88):

- 1) **Reserve Grand Champion & Junior Champion:** Bianchi Dorsets, CA to Lee Donald Olson, New Virginia, IA \$1100
- 2) Sugarloaf Dorsets, MN to Michael II Dorsets, Quincy, WA \$900
- 3) Troy Longenecker, PA to Johanna Rohrer, Manheim, PA \$300
- 4) McCarthy Polled Dorsets, OH to Lori Woods, Baylis, IL \$350
- 5) Van Bair Farms, PA to William McCord, Milan, NY \$475
- 6) Haven Point/Benedict, PA to Cedar Lane Dorsets, Manawa, WI \$550
- 7) Sunny Valley Farm, PA to Leon Byers, Harvard, IL \$350
- 8) Allan & Norma Freitas, CA to George Wieging, Cridersville, OH \$350

-Fall Yearling Ewes (26 head avg. \$1,250.96):

- 1) **Grand Champion & Senior Champion:** Twin Oaks Dorsets, OH to Johanna, Sonny & Katie May DeJoria, Newburg, OR \$4000
- 2) Lauden Acres, PA to Sidney DeVries, Freeport, IL \$4200
- 3) Lauden Acres, PA to Kyle, Kurt & Kaden Gutormson, Brookings, SD \$1900
- 4) Pine Ridge Dorsets, PA to CJN Dorsets, Emington, IL \$1800
- 5) Riverwood Farms, OH to Deanna Knapke, Rockford, OH \$800
- 6) Reynolds Stock Farm, OR to Kyle, Kurt & Kaden Gutormson, Brookings, SD \$1100
- 7) Lauden Acres, PA to Kendrick Dorsets, Vermont, IL \$800
- 8) Riverwood Farms, OH to Grace Murphy, Plymouth, IN \$750
- 9) Lauden Acres, PA to Kendrick Dorsets, Vermont, IL \$950
- 10) Reynolds Stock Farm, OR to Leon Byers, Harvard, IL \$600
- 11) Allan & Norma Freitas, CA to Deanna Knapke, Rockford, OH \$800
- 12) Riverwood Farms, OH to Deanna Knapke, Rockford, OH \$3000
- 13) Purple Ribbon Farms, IL to Maplewood Farm, Woodbine, MD \$1975
- 14) Superior Farms, OK to Glenn Stunkel, Tuscarora, MD \$650
- 15) Egan Dorsets, IL to Glenn Stunkel, Tuscarora, MD \$800
- 16) Smith Sheep Farm, IL to Tom Dagel, Watertown, SD \$500
- 17) Bob & Linda Highfield, OH to Glenn Stunkel, Tuscarora, MD \$700
- 18) Poynter Sheep Farm, IL to Tom Dagel, Watertown, SD \$600
- 19) Kaitlyn Verhaeghe, IN to Lexi, Libby, Kali & Kyla Wolkow, DeSmet, SD \$2700
- 20) Bob & Linda Highfield, OH to Ram & Ewe Farm, S. Solon, OH \$650

-Spring Yearling Ewes (46 head avg. \$1,050.54):

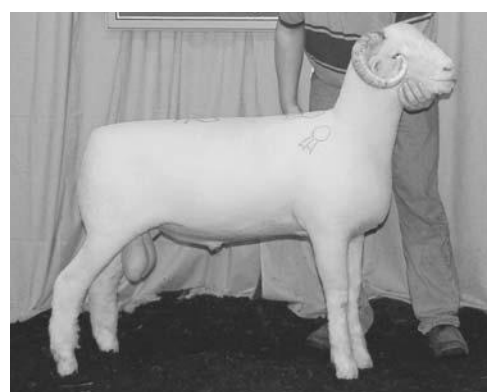
- 1) Spilde Dorsets, WI to SLD, Freeport, IL \$1100
- 2) Riverwood Farms, OH to Freitas/Bianchi, Oakdale, CA \$6300
- 3) Riverwood Farms, OH to Kyle, Kurt & Kaden Gutormson, Brookings, SD \$2200
- 4) Lauden Acres, PA to Kyle, Kurt & Kaden Gutormson, Brookings, SD \$2600
- 5) MGM Dorsets, IN to Ethan Hodel, Maroa, IL \$900



Res. Grand & Junior Champion Polled Ram
Late Fall Ram Lamb
Freitas/Bianchi, Oakdale, CA



Res. Grand & Res. Sr. Champion Polled Ewe
Slick Shorn Yearling Ewe
Kristina Repasky, Prior Lake, MN



Res. Grand & Junior Champion Horned Ram
Late Fall Ram Lamb
Cassell Horned Dorsets, Wytheville, VA

- 6) Superior Farms, OK to Haven Point Dorsets, Volant, PA \$3000
- 7) Northern Starr Lstck, MN to Troy Longenecker, Annville, PA \$1000
- 8) Superior Farms, OK to Poynter Sheep Farm, Paris, IL \$1100
- 9) Northern Starr Livestock, MN to Kaitlyn Verhaeghe, Argos, IN \$2200
- 10) S Bar J Ranch, CA to Caleb Wright, Alexandria, PA \$3600
- 11) Spilde Dorsets, WI to Green River Farms, Davis, CA \$900
- 12) S Bar J Ranch, CA to Lee Donald Olson, New Virginia, IA \$1000
- 13) Riverwood Farms, OH to DeGroat's Dorsets, Kettering, OH \$1100
- 14) Spilde Dorsets, WI to Glenn Stunkel, Tuscarora, MD \$900
- 15) Paul & Nancy Wissinger, PA to Glenn Stunkel, Tuscarora, MD \$800
- 16) Superior Farms, OK to Steve Hasselman, Ridott, IL \$650
- 17) McCarthy Polled Dorsets, OH to Dover Genetics, Piper City, IL \$800
- 18) Spilde Dorsets, WI to Woodland Dorsets, Belle Center, OH \$900
- 19) Poynter Sheep Farm, IL to Crouch Dorsets, Maroa, IL \$800
- 20) Smith Sheep Farm, IL to Ethan Hodel, Maroa, IL \$1000
- 21) Smith Sheep Farm, IL to Leon Byers, Harvard, IL \$500
- 22) Spilde Dorsets, WI to Bryan Macomber, Jackson, MI \$500

- 23) Northern Starr Livestock, MN to Sugarloaf Dorsets, Pipestone, MN \$750
- 24) Spilde Dorsets, WI to Pat Schudel & Trinity Welch, Metamora, OH \$650
- 25) Pine Ridge Dorsets, PA to Thomas Crome, Marshall, IL \$900
- 26) Lauden Acres, PA to Glenn Stunkel, Tuscarora, MD \$900
- 27) Poynter Sheep Farm, IL to Ed, Tins & E.J. Holz and Brandy Csizmar, Camden-Wyoming, DE \$700
- 28) Linda Pauly, UT to Abby Catfield, Hillsdale, IN \$550
- 29) Mithoefer Dorsets, IN to Steve Hasselman, Ridott, IL \$650
- 30) Mona Lisa Pettersson, OR to Mindy Gibson, Houstonia, MO \$550
- 31) J.L. Thornsborough, IL to Tom Dagle, Watertown, SD \$550
- 32) Bianchi Dorsets, CA to Don George, Jr., Ohio City, OH \$650
- 33) Pine ridge Dorsets, PA to C.J.N. Dorsets, Emington, IL \$850
- 34) Superior Farms, OK to David A. Meirs, Cream Ridge, NJ \$550
- 35) Egan Dorsets, IL to Dick Matlack, Mount Gilead, OH \$600
- 36) Lien Dorsets, WI to Dover Genetics, Piper City, IL \$550
- 37) Lien Dorsets, WI to West Family Dorsets, Huntsville, TN \$600
- 38) Superior Farms, OK to Tom Dagle, Watertown, SD \$575
- 39) Superior Farms, OK to Tom Dagle, Watertown, SD \$550
- 40) Rick Klampe, OR to Glenn Stunkel, Tuscarora, MD \$550

-Slick Shorn Yearling Ewes (5 head avg. \$820.00):

- 1) **Reserve Grand Champion & Reserve Senior Champion:** Northern Starr Lvstk, MN to Mitch Mrozinski, Rolling Prairie, IN \$1500
- 2) Woodland Dorsets, OH to Rocky Knob Farms-Liddle Family, Roberts, WI \$550
- 3) Parker Farms, IN to West Family Dorsets, Huntsville, TN \$550
- 4) J.L. Thornsborough, IL to Tom Dagle, Watertown, SD \$400
- 5) Kaitlyn Verhaeghe, IN to Deanna Knapke, Rockford, OH \$1100

-Early Fall Ewe Lambs (35 head avg. \$1,340.00):

- 1) **Junior Reserve Champion:** Twin Oaks Dorsets, OH to Kyle Gutormson, Brookings, SD \$4300
- 2) Spilde Dorsets, WI to Johanna DeJoria, Newburg, OR \$1100
- 3) Superior Farms, OK to Shane Lobdell, Lena, IL \$1600
- 4) Mithoefer Dorsets, IN to Olivia Waggoner, East Berlin, PA \$1800
- 5) Mithoefer Dorsets, IN to Ethan Hodel, Maroa, IL \$1400
- 6) Haven Point Dorsets, PA to Olivia Waggoner, East Berlin, PA \$4200
- 7) S Bar J Ranch, CA to Kyla Wolkow, DeSmet, SD \$1500
- 8) Twin Oaks Dorsets, OH to Sidney DeVries, Freeport, IL \$2400
- 9) Twin Oaks Dorsets, OH to Mindy Gibson, Houstonia, MO \$1700
- 10) Spilde Dorsets, WI to Kaden Gutormson, Brookings, SD \$800
- 11) Ram & Ewe Farm, OH to Kylie Schakel, Oxford, IN \$200
- 12) S Bar J Ranch, CA to Kurt Gutormson, Brookings, SD \$1200
- 13) Spilde Dorsets, WI to Crouch Dorsets, Maroa, IL \$800
- 14) S Bar J Ranch, CA to Mithoefer Dorsets, Lafayette, IN \$3200
- 15) Spilde Dorsets, WI to Johanna DeJoria, Newburg, OR \$1100

HUNTRODS DORSETS

SINCE 1963



Shorn
2006
Fall Ram
Lambs

Shorn
2008
Fall Ram
Lambs



Shorn 2010 Fall Ram Lambs

Year After Year Moderate Size...

...Practical, Easy Keeping Dorsets

We have a large selection of rams and ewes available!

Roger Huntrods

Phone: 641/385-2313

3048 Arney Avenue • Collins, Iowa 50055

2011 DORSET SPRING SALES RESULTS, cont.



**Res. Grand & Res. Sr. Champion Polled Ewe
Spring Yearling Ewe
Tim Gadsby, Exeter, RI**

- 16)Poynter Sheep Farm, IL Austin & Tyler Wright and Kacie & Noah Armour, Greencastle, IN \$900
- 17)Riverwood Farms, OH to Deanna Knapke, Rockford, IL \$1900
- 18)Ram & Ewe Farm, OH Jonathan Albright, Rock City, IL \$2100
- 19)Pine Ridge Dorsets, PA to Ethan Hodel, Maroa, IL \$600
- 20)McCarthy Polled Dorsets, OH to Jonathan & Jason

168 TOTAL LOTS GROSSED \$200,825.00 AVERAGING \$1195.39

**Townsend Best Horned Dorset Consignment Award
Cassell Horned Dorsets, Wytheville, VA**

HORNED DORSETS:

-Fall Yearling Ram (1 head avg. \$800.00):

- 1)**Grand Champion & Senior Champion:** John Mrozinski, IN to Joe Crill & Family, Rochester, IN \$800

-Spring Yearling Ram (1 head avg. \$550.00):

- 1)**Reserve Senior Champion:** Cassell Horned Dorsets, VA to Larry Richardson & Family, Oxford, OH \$550

-Early Fall Ram Lambs (3 head avg. \$375.00):

- 1)**Reserve Junior Champion:** John Mrozinski, IN to Tom Walsh, North Berwick, ME \$500
- 2)Lance Thompson, OH to High Hill Dorsets, Waynesburg, PA \$400
- 3)Crill Horned Dorsets, IN to Dana Lugena, Hannibal, MO \$225

-Late Fall Ram Lambs (3 head avg. \$750.00):

- 1)**Reserve Grand Champion & Junior Champion:** Cassell Horned Dorsets, VA to D. Lance Carter, Bakersfield, CA \$1500
- 2)Ridge Betts, DE to Scott Chapin, Camden, OH \$250
- 3)Squires Horned Dorsets, OH to Kim Root & Family, Carroll, OH \$500

-Slick Shorn Ram Lambs (1 head avg. \$275.00):

- 1)Squires Horned Dorsets, OH to Jimmy Parker, Vinemont, AL \$275

-Fall Yearling Ewes (4 head avg. \$581.25):

- 1)**Grand Champion & Senior Champion:** Cassell Horned Dorsets, VA to Christina Shotts, DeGraff, OH \$1200
- 2)Melissa Nauman, OH to Battle Run Farms, Prospect, OH \$625
- 3)Patoka Valley Sheep, IN to Galleher Farms, Mt. Gilead, OH \$250
- 4)Patoka Valley Sheep, IN to Galleher Farms, Mt. Gilead, OH \$250

-Spring Yearling Ewes (7 head avg. \$692.68):

- 1)**Reserve Grand Champion & Reserve Senior Champion:** Tim Gadsby, RI to Hunter Wendland, Prior Lake, MN \$2000
- 2)Houfe Dorsets, WI to Patoka Valley Sheep, Princeton, IN \$1000
- 3)Lance Thompson, OH to Battle Run Farms, Prospect, OH \$550
- 4)Spring Hill Farm, NH to Houfe Dorsets, Milton, WI \$300
- 5)John Mrozinski, IN to Bridgette Eldridge, Winters, CA \$400
- 6)Squires Horned Dorsets, OH to Houfe Dorsets, Milton, WI \$275
- 7)Rick Grimme, IN to Scott Chapin, Camden, OH \$325

-Slick Shorn Yearling Ewes (5 head avg. \$370.00):

- 1)Lance Thompson, OH to Christina Shotts, Quincy, OH \$650
- 2)Rick Grimme, IN to Houfe Dorsets, Milton, WI \$325
- 3)Squires Horned Dorsets, OH to Jimmy Parker, Vinemont, AL \$300
- 4)Squires Horned Dorsets, OH to Austin & Tyler Wright and Kacie & Noah Armour, Greencastle, IN \$275
- 5)Squires Horned Dorsets, OH to Houfe Dorsets, Milton, WI \$300

-Early Fall Ewe Lambs (9 head avg. \$669.44):

- 1)**Junior Champion:** Oberholzter Horned Dorsets, PA to Johanna DeJoria, Newburg, OR \$950
- 2)Cassell Horned Dorsets, VA to Noah Richardson, W. Chester, OH \$800
- 3)John Mrozinski, IN to Austin Inbody, Bluffton, OH \$1200
- 4)Tim Gadsby, RI to Kevin Whitmer, Bradford, OH \$1050
- 5)Squires Horned Dorsets, OH to Johanna DeJoria, Newburg, OR \$550
- 6)Oberholzter Horned Dorsets, PA to Scott Chapin, Camden, OH \$450
- 7)Lance Thompson, OH to Larry Smith & Fam, Crawfordsville, IN \$550
- 8)Patoka Valley Sheep, IN to Scott Chapin, Camden, OH \$225
- 9)Oberholzter Horned Dorsets, PA to Larry Smith & Family, Crawfordsville, IN \$250

-Late Fall Ewe Lambs (8 head avg. \$887.50):

- 1)**Junior Reserve Champion:** Cassell Horned Dorsets, VA to Greg Lough & Family, Darlington, IN \$700
- 2)Cassell Horned Dorsets, VA to Jade Zimmerman, East Earl, PA \$700

Apple, Greenfield, IN \$1000

- 21)Pine Ridge Dorsets, PA to Sugarloaf Dorsets, Pipestone, MN \$1500
- 22)Riverwood Farms, OH to Greg Lough & Fam., Darlington, IN \$1500
- 23)McDaniel Ranch, IN to Busch & Family, Keystone, IA \$700
- 24)Smith Family Sheep, IL to Daren Martin, Summitville, IN \$600
- 25)Woodland Dorsets, OH to William McCord, Milan, NY \$600
- 26)Pine Ridge Dorsets, PA to CJN Dorsets, Emington, IL \$900
- 27)Pine Ridge Dorsets, PA to Crouch Dorsets, Maroa, IL \$750
- 28)Van Bair Farms, PA to Duane Aldrich, DeSmet, SD \$550
- 29)Spilde Dorsets, WI to Daren Martin, Summitville, IN \$900
- 30)Woodland Dorsets, OH to Busch & Family, Keystone, IA \$600
- 31)Bob & Linda Highfield, OH to Bryan Macomber, Jackson, MI \$700
- 32)Van Bair Farms, PA to West Family Sheep, Huntsville, TN \$550
- 33)Pine Ridge Dorsets, PA to Crouch Dorsets, Maroa, IL \$600
- 34)Kendrick Dorsets, IL to DM Callison Dorsets, Hillsboro, WV \$300
- 35)Robert & Linda Highfield, OH to Duane Aldrich, DeSmet, SD \$550

-Late Fall Ewe Lambs (19 head avg. \$1,101.32):

- 1)**Junior Champion:** Bianchi Dorsets, CA to Johanna DeJoria, Newburg, OR \$3700
- 2)Crome Dorsets, IL to Deanna Knapke, Rockford, OH \$2300
- 3)Crome Dorsets, IL to Showgirlz Sheep Co., Paris, IL \$2250
- 4)McCarthy Polled Dorsets, OH to Jennifer & Jason Apple, Greenfield, IN \$900
- 5)McCarthy Polled Dorsets, OH to Kori Beisbier, Reedsburg, WI \$1100
- 6)Paul & Nancy Wissinger, PA to Ed, Tina & EJ Holz and Brandy Csizmar, Camden-Wyoming, DE \$550
- 7)Riverwood Farms, OH to Jenna Davis, Chillicothe, OH \$1000
- 8)Superior Farms, OK to Ed, Tina & EJ Holz and Brandy Csizmar, Camden-Wyoming, DE \$1100
- 9)Mithoefer Dorsets, IN to Tim or Kathy Coss & Family, Cannon Falls, MN \$700
- 10)Allan & Norma Freitas, CA to Deanna Knapke, Rockford, OH \$850
- 11)Sugarloaf Dorsets, MN to Showgirlz Sheep Co., Paris, IL \$800
- 12)Riverwood Farms, OH to John Bianchi, Hollister, CA \$1100
- 13)McDaniel Ranch, IN to Rocky Knob Farms-Liddle Family, Roberts, WI \$500
- 14)Van Bair Farms, PA to Ashley Pinckney, Cayuga, NY \$600
- 15)Smith Sheep Farm, IL to Chelsey Peters, Nevada, TX \$1000
- 16)Sunny Valley Farm, PA to Pat & Schudel & Trinity Welch, Metamora, OH \$700
- 17)Paul & Nancy Wissinger, PA to Pat & Schudel & Trinity Welch, Metamora, OH \$700
- 18)Woodland Dorsets, OH to Lori Woods, Baylis, IL \$425
- 19)Woodland Dorsets, OH to William McCord, Milan, NY \$650

-Slick Shorn Ewe Lambs (1 head avg. \$550):

- 1)Parker Farms, IN to West Family Sheep, Huntsville, TN \$550

- 3)Ridge Betts, DE to High Hill Horned Dorsets, Waynesburg,PA \$650
- 4)Ridge Betts, DE to High Hill Horned Dorsets, Waynesburg,PA \$650
- 5)Cassell Horned Dorsets, VA to Natalie Richardson, Crawfordsville, IN \$600
- 6)Lance Thompson, OH to Joseph Tedford, Marion, KY \$550
- 7)Squires Horned Dorsets, OH to Christina Shotts, Quincy,OH \$2800
- 8)Lance Thompson, OH to Battle Run Farms, Prospect, OH \$450
- Slick Shorn Ewe Lambs (1 head avg. \$450.00):**
- 1)Squires Horned Dorsets, OH to Joseph Tedford, Marion, KY \$450
- 43 TOTAL LOTS GROSSED \$27,600.00 AVERAGING \$641.86**

Illinois Dorset Sale

April 1-2, 2011

Bloomington, Illinois

Judged by Brian Mohr

- Fall Yearling Ram (1 head avg. \$400.00):**
- 1)Thistledown Dorsets, IN to Luke May, Mount Hope, KS \$400
- Spring Yearling Rams (5 head avg. \$520.00):**
- 1)Riverwood Farms, OH to Marvin Koerper, Geneseo, IL \$800
- 2)MGM Dorsets, IN to Cory Moshier, Gilson, IL \$500
- 3)Cordray Dorsets, IL to Roger, Brenden & Jayden Price, Pardeeville, WI \$500
- 4)Sarah Moore, IL to Illinois State University, Normal, IL \$500
- 5)CJN Dorsets, IL to Luke May, Mount Hope, KS \$300
- September Ram Lambs (11 head avg. \$731.82):**
- 1)**Grand Champion & Senior Champion:** Twin Oaks Dorsets, OH to Crystal Creek Farms, Menlo, IA \$3200
- 2)**Reserve Grand Champion & Reserve Senior Champion:** Smith Sheep Farm, IL to Hayden Dorsets, Idaville, IN \$1000
- 3)Cedar Lane Dorsets, WI to Shirley, Allen & Daylon Scheele, Stockton, IL \$450

- 4)Riverwood Farms, OH to Austin Menges, Danville, IL \$500
- 5)Riverwood Farms, OH to Brent Sappington, Queen City, MO \$425
- 6)Van Bair Farms, PA to J & L Dorsets, Claypool, IN \$400
- 7)Cordray Dorsets, IL to Kurt, Kyle & Kaden Gutormson, Brookings, SD \$700
- 8)Quarter Mile Farm, IL to Jason Kuhn, Genoa, IL \$400
- 9)Pope Dorsets, IN to Luke May, Mount Hope, KS \$300
- 10)Thistledown Dorsets, IN to Luke May, Mount Hope, KS \$300
- 11)Kendrick Dorsets, IL to Braeden Reed, Stronghurst, IL \$375
- October Ram Lambs (2 head avg. \$350.00):**
- 1)**Reserve Junior Champion:** MGM Dorsets, IN to Kyle, Kurt & Kaden Gutormson, Brookings, SD \$400
- 2)Pope Dorsets, IN to Luke May, Mount Hope, KS \$300
- Late Fall Ram Lamb (1 head avg. \$500.00)**
- 1)**Junior Champion:** Purple Ribbon Farms, IL to Joseph Tedford, Marion, KY \$500
- Fall Yearling Ewes (8 head avg. \$771.88):**
- 1)Quarter Mile Farm, IL to Piller Dorsets, Mendota, IL \$1700
- 2)Riverwood Farms, OH to Tim or Kathy Coss & Family, Cannon Falls, MN \$1050
- 3)Smith Sheep Farm, IL to Tom Dagel, Watertown, SD \$600
- 4)Pope Dorsets, IN to Thomas Vandenerter, Camargo, IL \$750
- 5)Thistledown Dorsets, IN to Aldrich Brothers, DeSmet, SD \$600
- 6)Kendrick Dorsets, IL to Craig Fleck, Luck, WI \$300
- 7)Thistledown Dorsets, IN to Aldrich Brothers, DeSmet, SD \$600
- 8)Riverwood Farms, OH to Crystal Creek Farms, Menlo, IA \$575
- Spring Yearling Ewes (15 head avg. \$888.33):**
- 1)**Grand Champion & Senior Champion:** Smith Sheep Farm, IL to Sylvia Albright, Rock City, IL \$800
- 2)**Reserve Grand Champion & Reserve Senior Champion:** Quarter Mile Farm, IL to Piller Dorsets, Mendota, IL \$1700
- 3)Poynter Sheep Farm, IL to Show Girlz Sheep Co., Paris, IL \$2750
- 4)Riverwood Farms, OH to Don George, Jr., Ohio City, OH \$3000

The Sharpsville Sheep Company

East Coast Horns Meet West Coast Horns!

We are using Ewephoric stud rams "LadyKilleRR" and "Rowdy" in our flock. Our ewes are almost exclusively east coast breeding. This cross seems to be working out well! Our spring lambs look terrific! We have a nice set of ewe lambs and ram lambs for sale.

We would like to thank the following Horned Dorset Breeders who added our sheep to their flocks in the past year:

- | | |
|---|-------------------------------------|
| Edgar Gould Family, MA – Yearling Ram | Kevin Whitmer, OH – Ewe Lamb |
| Emma Oberholtzer, PA, – Yearling Ram & Yearling Ewe | Wayne Thiel, NY – Fall Yearling Ewe |
| Michael Houfe, WI – Yearling Ewe | Mike Galleher, OH – Fall Ewe Lamb |
| Scott Chapin, OH – Yearling Ewe | Rex Gingerich, IN – Yearling Ewe |
| Candy Lutz, OH – Ram Lamb | Madison Hook, IN – Ewe Lamb |

~ Registered Horned Dorset Sheep ~

Rick & Donna Grimme

4482 N 200 W ♦ Sharpsville, Indiana 46068 ♦ 765/963-2536

2011 DORSET SPRING SALES RESULTS, cont.

- 5)Lein Dorsets, WI to Andrew Lesch, Papineau, IL \$700
- 6)Smith Sheep Farm, IL to Hayden Dorsets, Idaville, IN \$1000
- 7)J.L. Thornsborough, IL to Aldrich Brothers, DeSmet, SD \$400
- 8)Lein Dorsets, WI to John Edward Baker Family, Chandler, IN \$525
- 9)Crouch Dorsets, IL to John Edward Baker Family, Chandler, IN \$475
- 10)Daniels Family Dorsets, IL to Sarah Moore, Jerseyville, IL \$1250
- 11)Mindy Gibson, MO to John Edward Baker Fam., Chandler, IN \$625
- 12)Dusty Rincker, IL to Aldrich Brothers, DeSmet, SD \$500
- 13)Dusty Rincker, IL to Aldrich Brothers, DeSmet, SD \$500

-September Ewe Lambs (9 head avg. \$1,011.11):

- 1)Twin Oaks Dorsets, OH to Lee Donald Olson, New Virginia, IA \$1000
- 2)Poynter Sheep Farm, IL to Kurt Gutormson, Brookings, SD \$3100
- 3)Cordray Dorsets, IL to Tom Morehead, Cherry Valley, IL \$1300



**Grand & Senior Champion Polled Ram
September Ram Lamb
Twin Oaks Dorsets, Belle Ctr., OH**

- 4)Smith Sheep Farm, IL to Jonathan Albright, Rock City, IL \$500
- 5)Riverwood Farms, OH to Deanna Knapke, Rockford, OH \$700
- 6)Daniels Family Dorsets, IL to A. Thornsborough, Lebanon, IN \$600
- 7)Riverwood Farms, OH to Deanna Knapke, Rockford, OH \$850
- 8)Van Bair Farms, PA to Aldrich Brothers, DeSmet, SD \$750
- 9)Hayden's Dorsets, IN

to Hunter Dorsets-Larry & Jason Hunter, Roseville, IL \$300

-October Ewe Lambs (7 head avg. \$750.00):

- 1)**Junior Champion:** Purple Ribbon Farms, IL to Jonathan Albright, Rock City, IL \$950
- 2)**Reserve Junior Champion:** Riverwood Farm, OH to Deanna Knapke, Rockford, OH \$900
- 3)Cedar Lane Dorsets, WI to Crystal Creek Farms, Menlo, IA \$900
- 4)Marvin Koerper, IL to CJN Dorsets, Emington, IL \$750
- 5)Thistledown Dorsets, IN to Anna Trotter, Marysville, IN \$600
- 6)Mindy Gibson, MO to Brenden Price, Pardeeville, WI \$550
- 7)Marvin Koerper, IL to Joseph Tedford, Marion, KY \$600

-Late Fall Ewe Lamb (1 head avg. \$400.00):

- 1)Pope Dorsets, IN to Morgan Crouch, Maroa, IL \$400

-Spring Ewe Lambs (3 head avg. \$400.00):

- 1)Daniels Family Dorsets, IL to Devan Brown, Hillsdale, IN \$500
- 2)Mindy Gibson, MO to Joseph Tedford, Marion, KY \$400
- 3)Marvin Koerper, IL to Tyler Riechmann, Okawville, IL \$300

**63 TOTAL LOTS
GROSSED \$49,350.00
AVERAGING \$783.33**



**Grand & Senior Champion Polled Ewe
Spring Yearling Ewe
Smith Sheep Farm, Stewardson, IL**

POPE DORSETS

We Had A Great Day At The Illini Dorset Sale!



Thanks to Thomas Vandeventer, IL, for his purchase of our 4th place Fall Yearling Ewe!

Watch for our Entries at the National Dorset Sale in Sedalia!



Special thanks to the Illinois Dorset Association for purchasing our 1st place November/December Ewe Lamb and congratulations to Morgan Crouch, IL, on winning her in the Association's Annual Drawing!



Thanks to Luke May, KS, for purchasing our 2nd place October Ram Lamb! Luke also got our September Ram Lamb!

See our Show Flock at the All-American, our usual State Fairs, and the NAILE!

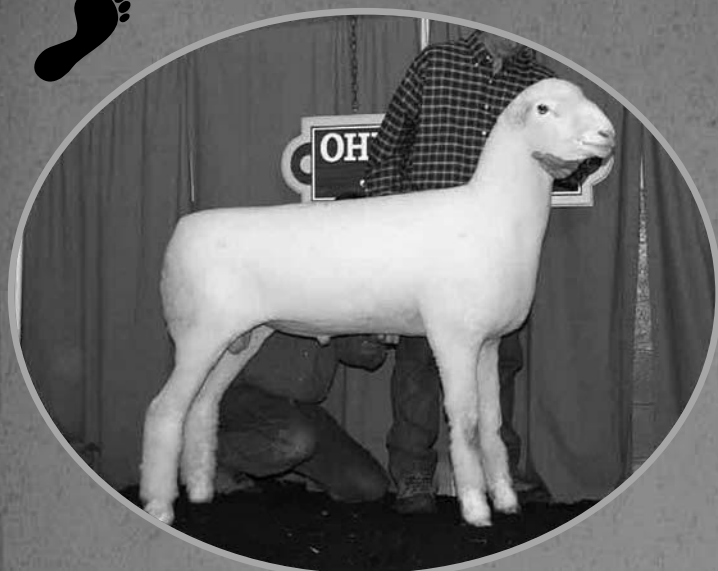
Special Thanks to Dick Reece, Sarah Moore, and their families for all their help at the Sale!

Michael Pope • 317/966-3091 • Morristown, IN • popedorsets@aol.com



Success is a journey, not a destination.

– Arthur Ashe, 3 time Grand Slam Tennis Champion, 1943-1993



What's the next step on YOUR journey?

Evaluate the opportunity to add BluepRRint genetics to your flock. Our consignments will be at:

- National Dorset Sale, Sedalia, in June
- North Star Sale, Pipestone, in October

We meld form & function in our Dorsets:

- Eye appeal to excel in the showing
- Performance to excel in the lambing barn
 - Bone & durability
 - Natural fall lambing - no estrus PEDs
 - 103 fall lambs born in 2008
 - 67 fall lambs born in 2009
 - 107 fall lambs born in 2010

"BluepRRint" Egan 441 (above) sired:

- Blueblood, 2008 Res Champion Ram & 2009 Champion Ram at MN State Fair
- Sanford D650, 2009 National Futurity Ewe Lamb for Mitch Donkers
- Sanford D652, 2010 MN State Fair Champion Ram
- 4 out of 5 individuals in our 2010 MN State Fair winning flock

First Place Flock & Premier Exhibitor – 2010 MN State Fair

Sincere thanks to our buyers and bidders at the 2010 North Star and MN Bred Ewe sales.

A special "tip of the hat" to our winter and spring purchasers at the farm!!



Sanford Flock:

- Champion ram – sired by BluepRRint
- 1st pair Yrlg Ewes – sired by BluepRRint
- 2nd Feb Ewe – sired by Blueblood (granddaughter of BluepRRint)
- 1st March Ewe – sired by BluepRRint

Sanford Dorsets & Hampshires

Gene & Marci Sanford

12529 Canby Ave, Faribault, MN 55021 ~ 507-645-4989 ~ mgsanford99@gmail.com



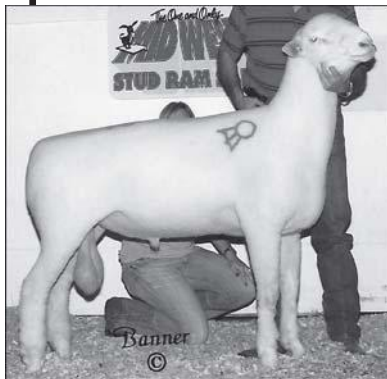
**THE
CONTINENTAL
DORSET CLUB, INC**

Debra Hopkins, Secretary
P.O. Box 506
North Scituate, RI 02857

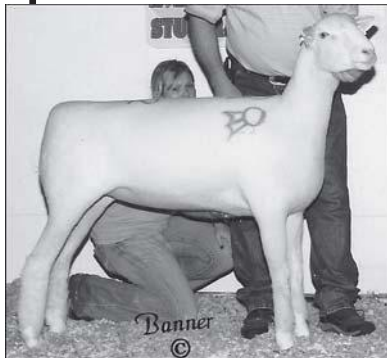
No return service requested

2011...

**NATIONAL
DORSET
SHOW & SALE**



2010 Grand Champion Polled Yearling Ram from Ohio sold to Colorado.



2010 Grand Champion Polled September Ewe Lamb from Ohio sold to Illinois.

MISSOURI STATE FAIRGROUNDS

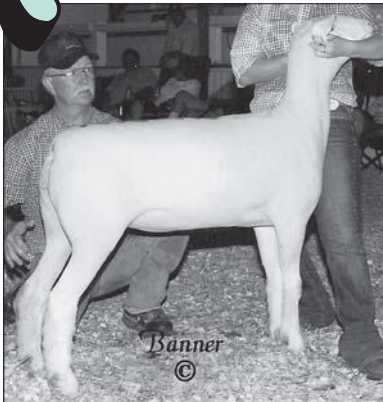
SEDALIA

SHOW: 8:00 AM ~ WEDNESDAY, JUNE 22

(Horned Dorsets Show Between Polled Rams & Ewes)

Brad Angus, Judge

SALE: 4:30 PM ~ FRIDAY, JUNE 24



2010 Grand Champion Polled Wether Dam Yearling Ewe from Indiana sold to Kansas for \$5,800.



2010 Grand Champion Horned Fall Ram Lamb from Virginia sold to Missouri.

Contact Us For Additional Information:

Sheep Breeder

Telephone 573/442-8257 – Fax 573/874-8843
PO Box 796 – Columbia, Missouri 65205-0796



The One and Only

**MIDWEST
STUD RAM SALE**

Featuring
6
NATIONAL
SALES

America's Greatest Sheep Sale!

JUNE 20 • 25

16 BREEDS

TUNIS
TEXELS
DORPERS
SUFFOLKS
POLYPAYS
KATAHDINS
COLUMBIAS
HAMPSHIRE
MONTADALES
GORRIEDALES
SHROPSHIRE
SOUTH DOWNS
RAMDOUILLETS
POLLED DORSETS
HORNED DORSETS
NATURAL COLORED

About...
3000
REGISTERED
RAMS & EWES

**MIDWEST
CLASSIC
WETHER SIRE
SALE**

SHOW: 7:00 AM THURSDAY
SALE: 8:00 AM SATURDAY

Dorset Wether Sires & Dams show about 3:00 pm
Wednesday... Kyle Smithwick, Judge. Sell...
Friday Evening following the Dorset Breeding Sheep.

Check these Websites for added information...
www.sheepsales.com
www.breedersworld.com

**MIDWEST
DOER GOAT SALE**

SHOW: 7:00 PM ~ WEDNESDAY
SALE: 7:00 PM ~ THURSDAY

Can't Attend the Sale??

View the auction live! Bid online... you're ringside right at your own desk! Visit our website...for more information and registering to bid!

DVAuction Broadcasting Real-time Auctions
www.dvauction.com

Call Dan Broz @ 402/649-3172
or DV Auction @ 402/474-5557

**Sale
management
service**